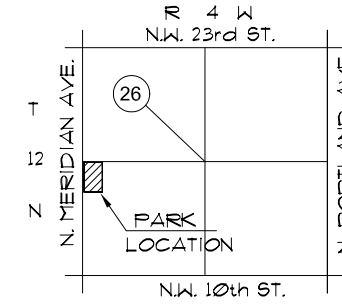




STATISTICS

- ACRES: 4.2
- PARKING SPACES: 17 REG. SPACES - ASPHALT
1 HANDICAP SPACE
REDONE - 1999
- FACILITIES:
 - * PLAYGROUND EQUIPMENT -1999
 - * HALF-COURT BASKETBALL COURT (1 GOAL)
 - * JUNIOR POOL



NOTES:

1. PARK BOUNDARY IS APPROXIMATE LOCATION ONLY.
2. LOCATION OF IMPROVEMENTS IS CONCEPTUAL. VERIFY LOCATION IN FIELD.

E.B. JEFFREY PARK

NW 16th & MERIDIAN - WARD 3 - DEED RESTRICTION

City of Oklahoma City
Parks and Recreation Department
JUNE 1998 / MAY 2002