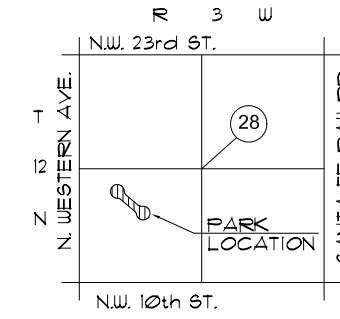


**STATISTICS**

ACRES: 4.8  
 PARKING SPACES: ON STREET  
 FACILITIES:  
 \* LANDSCAPED MEDIAN  
 NOTE:  
 PARK MAINTAINED BY THE  
 NEIGHBORHOOD ASSOCIATION



**NOTES:**

1. PARK BOUNDARY IS APPROXIMATE LOCATION ONLY.
2. LOCATION OF IMPROVEMENTS IS CONCEPTUAL.  
 VERIFY LOCATION IN FIELD.

**ALICE HARN PARK**

N.W. 14th & CLASSEN DR. - WARD 6 - DEED RESTRICTION

City of Oklahoma City  
 Parks and Recreation Department  
 APRIL 1998 / MAY 2002