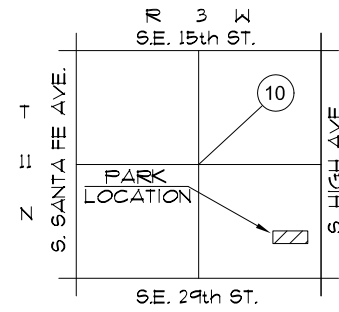


STATISTICS

ACRES: 1.5
 PARKING SPACES: 16 SPACES - ASPHALT
 FACILITIES:
 * METAL PLAYGROUND EQUIPMENT



NOTES:

1. PARK BOUNDARY IS APPROXIMATE LOCATION ONLY.
2. LOCATION OF IMPROVEMENTS IS CONCEPTUAL. VERIFY LOCATION IN FIELD.

FROST HEIGHTS PARK

SE 26th & PHILLIPS - WARD 7 - LEASED TO SE HEALTH CENTER

City of Oklahoma City
 Parks and Recreation Department
 JUNE 1998 / MAY 2002