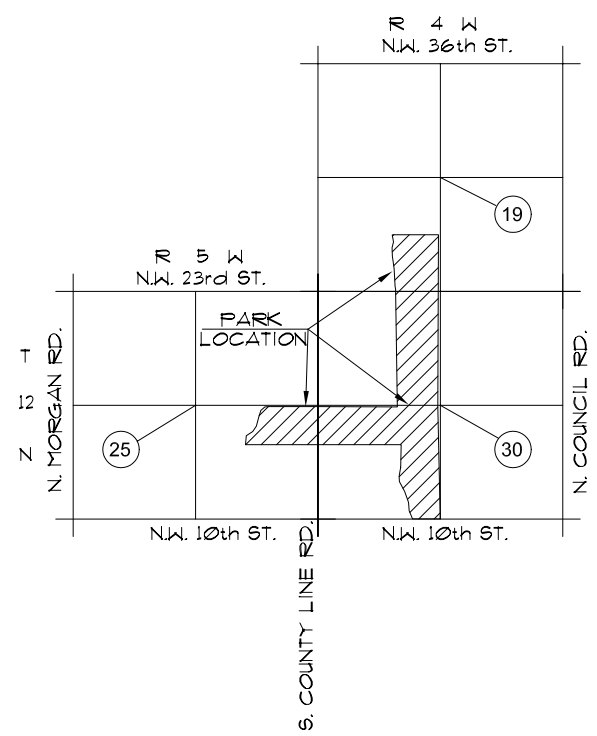


**STATISTICS**

- ACRES: 60
- PARKING SPACES: 40 SPACES - ASPHALT
- FACILITIES:
  - \* (2) TENNIS COURTS - LIGHTED
  - \* FISHING
  - \* (12) SOCCER FIELDS - UNLIGHTED
  - \* (2) PICNIC SHELTERS
  - \* (25) PICNIC AREAS
  - \* PUBLIC RESTROOMS
  - \* JOGGING TRAIL - FUTURE



- NOTES:
1. PARK BOUNDARY IS APPROXIMATE LOCATION ONLY.
  2. LOCATION OF IMPROVEMENTS IS CONCEPTUAL. VERIFY LOCATION IN FIELD.

**LAKE OVERHOLSER PARK**

NW 10th & NW 18th on OVERHOLSER DR - WARD 1

City of Oklahoma City  
Parks and Recreation Department  
JUNE 1998 / OCT 2000