

STORM DEBRIS PROGRESS

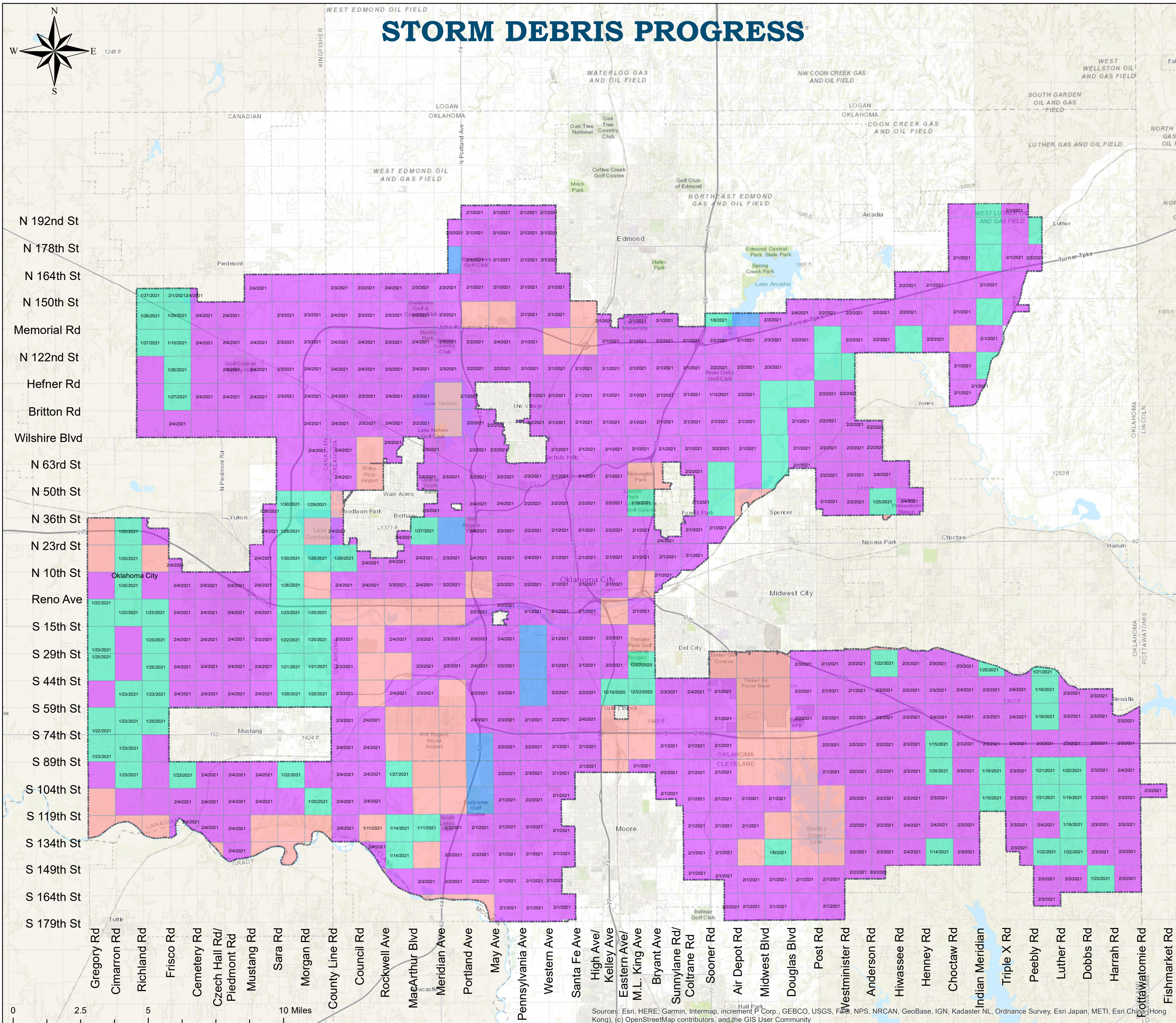


The City of
OKLAHOMA CITY
UTILITIES DEPARTMENT

Status Date:
2/4/2021

Status

- No Debris Pickup
- Currently Working
- 1st Pass Complete
- 2nd Pass Complete



Sources: Esri, HERE, Garmin, Intermap, increment P Corp., GEBCO, USGS, FAO, NPS, NRCAN, GeoBase, IGN, Kadaster NL, Ordnance Survey, Esri Japan, METI, Esri China (Hong Kong), (c) OpenStreetMap contributors, and the GIS User Community