

NOTICE TO ARCHITECTS, ENGINEERS, AND PLANNERS

NOTICE IS HEREBY GIVEN, that the City of Oklahoma City and Oklahoma City Zoological Trust has a capital improvement project that requires the services of a consulting firm.

In order to be considered, the Consultant must comply with the Resolution establishing procedure for "Selection of Architects, Engineers, and Planners" adopted by the City Council on November 18, 1986 and by the Oklahoma City Zoological Trust on February 14, 2001, a copy of which may be obtained at <http://www.okc.gov/pw/admin.html> from the office of the Public Works Department Director.

The Project is as follows:

Project No. **MZ-0060**, Zoo Orientation Plaza and Africa-Themed Savannah exhibits at the Oklahoma City Zoo and Botanical Garden.

The project scope includes repurposing the Zoo's existing Pachyderm Building. The project site includes the pachyderm associated exhibit yards, the "Island Life" building and exhibit, and the "Asian Deer" yard.

This project includes refining existing conceptual designs, the preparation of plans and specifications, and bidding and construction administration services.

Firms with experience in similar exhibit design projects are invited to apply.

In determining the successful consulting firm the Trust will be looking to select a team of experienced, specialized zoo architects/landscape architects/exhibit designers. The following criteria will be utilized in selection consideration:

1. The firm's demonstration of its understanding of the proposed zoo project, specific experience completing projects with continuing operations, and its ability in designing similar zoo exhibits and facilities.
2. Detail how the firm's creative designs have impacted zoo attendance and revenue.
3. Properly registered with the State of Oklahoma (professional licensing boards and Secretary of State) for all required disciplines in the State of Oklahoma, including certificates of authority for firm practice.
4. Proven projects with innovative designs that technically perform well (life support with hippos or other such collection, energy efficiency and management, etc.)
5. The firm's past performance in successfully completing similar projects valued at \$20 million including references (also include list of completed projects of comparable exhibit design).
6. The resumes and experience of the staff to be assigned to the project and the firm's commitment to maintaining the team throughout the project including an organizational chart with job description.
7. Specific experience of licensed principal-in-charge who will lead project.
8. The firm's reputation for quality, cooperation and communication on previous projects.

9. The firm's percentage of change orders and budget adherence on past completed projects.
10. Experience with repurposing existing buildings and buildings of historical significance.

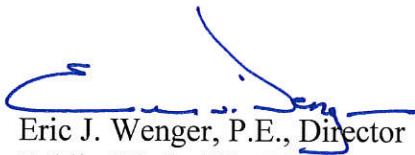
Refer to the concept sheets located with the advertisement located on <http://okc.gov/departments/public-works/engineer-architect-resources/notice-to-a-e>.

Refer to the basic contract located on <http://okc.gov/departments/public-works/engineer-architect-resources/notice-to-a-e>. All contracts with the City or its related Trusts use this contract. Please review the contract to ensure insurance and indemnity requirements will be met.

Please include a 254 Form with your Letter of Interest.

Time Schedule for the above project: Last date for submitting Letter of Interest (**five copies of letter and all attachments and an electronic copy**) to the Public Works Department Director, 420 W. Main Street, Suite 700, Oklahoma City, OK 73102: prior to 5:00 p.m. May 29, 2018.

A tour of the site will be held on May 22, 2018 from 9:00 am to 11:30 am. Meet at the front entry of the zoo.



Eric J. Wenger, P.E., Director
Public Works/City Engineer

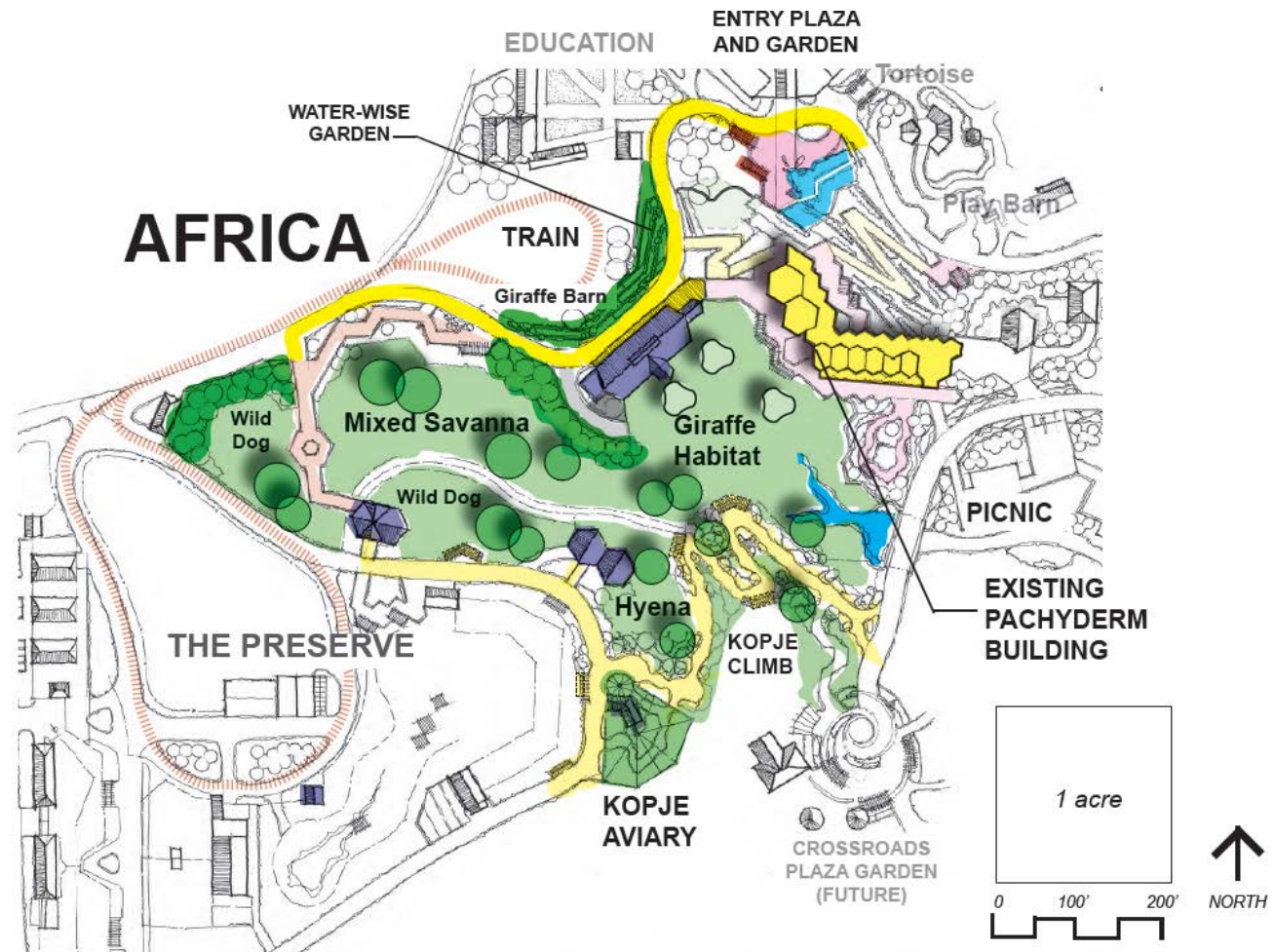
Africa

This project includes a major renovation to the 11-acre heart of the zoo. As guests enter the Zoo, they are embraced by a welcoming plaza with a full-scale sculpture of giraffe at a small waterhole that turns into a zero-edge waterfall. This plaza will tell the Zoo's story as a conservation organization and botanical garden.

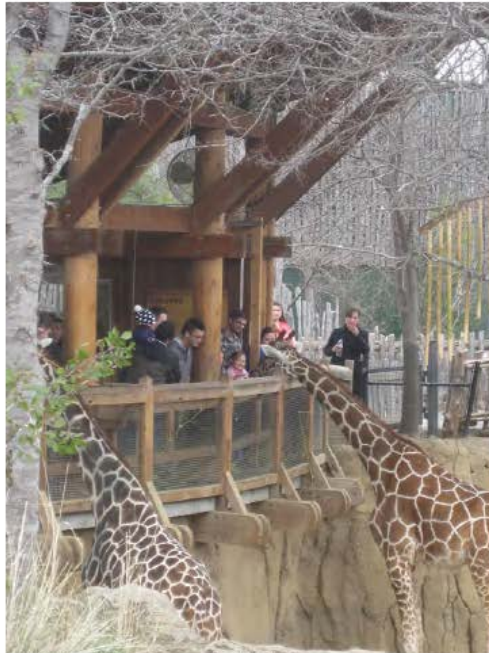
The old Pachyderm Building will be transformed into a modern guest center that can also be configured for events, educational programs, and birthday parties. Guests can take in the views from the terraces overlooking the savanna, or feed giraffe from patios off of the Pachyderm Building. An expansive mixed species habitat includes giraffe, eland, zebra and ground birds. The habitat includes, a small pool at the historic bridge. Encircling the savanna are habitats for African wild dogs, hyena and in adjacent areas, cheetah and okapi.

A large barn will be included adjacent to the old Pachyderm to manage the giraffe, eland and. Guests

can enter the barn for upper-level viewing and feeding. The project completes a loop by adding the Kopje Climb path that will connect to the



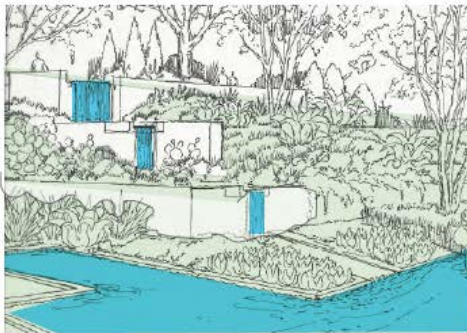
current Lion Kopje. Several close-up viewing blinds are planned along the 20' vertical climb. Native plant species will replicate an educational landscape about Kopje, "islands in the grass." Additional features include the new boardwalk across the Oak Valley to a series of viewing decks and covered shelters with animal holdings below. A mixed species aviary is planned to offer year-round viewing of many sensitive tropical species.



Giraffe Feeding Terrace from Dallas Zoo



Existing Interior of the Pachyderm



Hanging Garden at The Pachyderm



Giraffe "Manor"-type Barn from Buttonwood Park Zoo



from African Savanna Concept Plan by Ace Torre



Major species on the African Savanna

The Pachyderm

Integral to Africa is a renovation of the existing mid-century modern Pachyderm building into a modern Zoo Visitor Center. This flexible space will be available to daily guests as well as public and private events. The existing, outdated animal holding areas will be converted to functional spaces for uses such as an auditorium, changing exhibits, art gallery, and classrooms. A variety of small animal will activate the public hallway and rooms. Exhibits will be customized to the building's unique triangular niches, as well as in ground pools, each with an extensive interpretive package for teaching/learning purposes.

From this location, guests will have access out in all directions to engage in a variety of activities. Updated restrooms and baby changing facilities are provided. Special gardens will flow out from each side of the building: to the west, a hillside garden for small African mammals and reptiles; to the north, the terrace garden for outdoor events and views to the entry plaza waterfall and pools; to the east, habitats for flamingos and pygmy hippos;

and to the south, an extensive terrace for viewing and feeding opportunities for the multi- species savanna habitat. Several types of feeding and engagement opportunities are proposed: elevated giraffe feeding, on-grade ostrich and eland feeding. As a party rental option, a private walking safari interpretive area will provide special viewing/feeding opportunities and camp tents for children to experience life as a field researcher.

