

Open Streets Route - Fall 2018

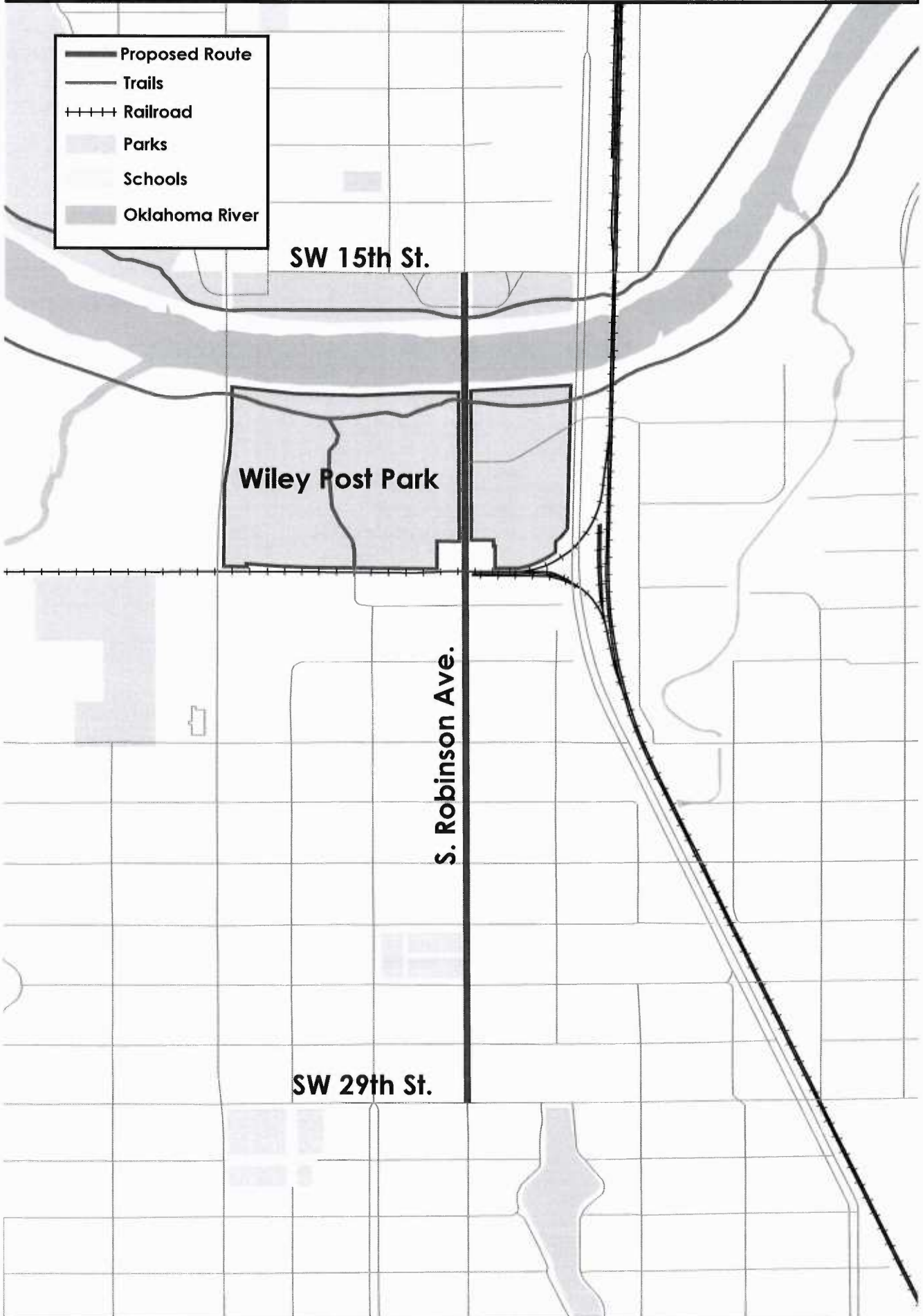
- Proposed Route
- Trails
- + + + + Railroad
- Parks
- Schools
- Oklahoma River

SW 15th St.

Wiley Post Park

S. Robinson Ave.

SW 29th St.





SW 15th St.

S Robinson Ave.

SW 17th St.

Open Streets Barrier Map
Sheet 1

-  - Streets to be Closed
-  - Street Closures
-  - Alley Closures
-  - Driveway Closures


 N

2.


Open Streets Barrier Map

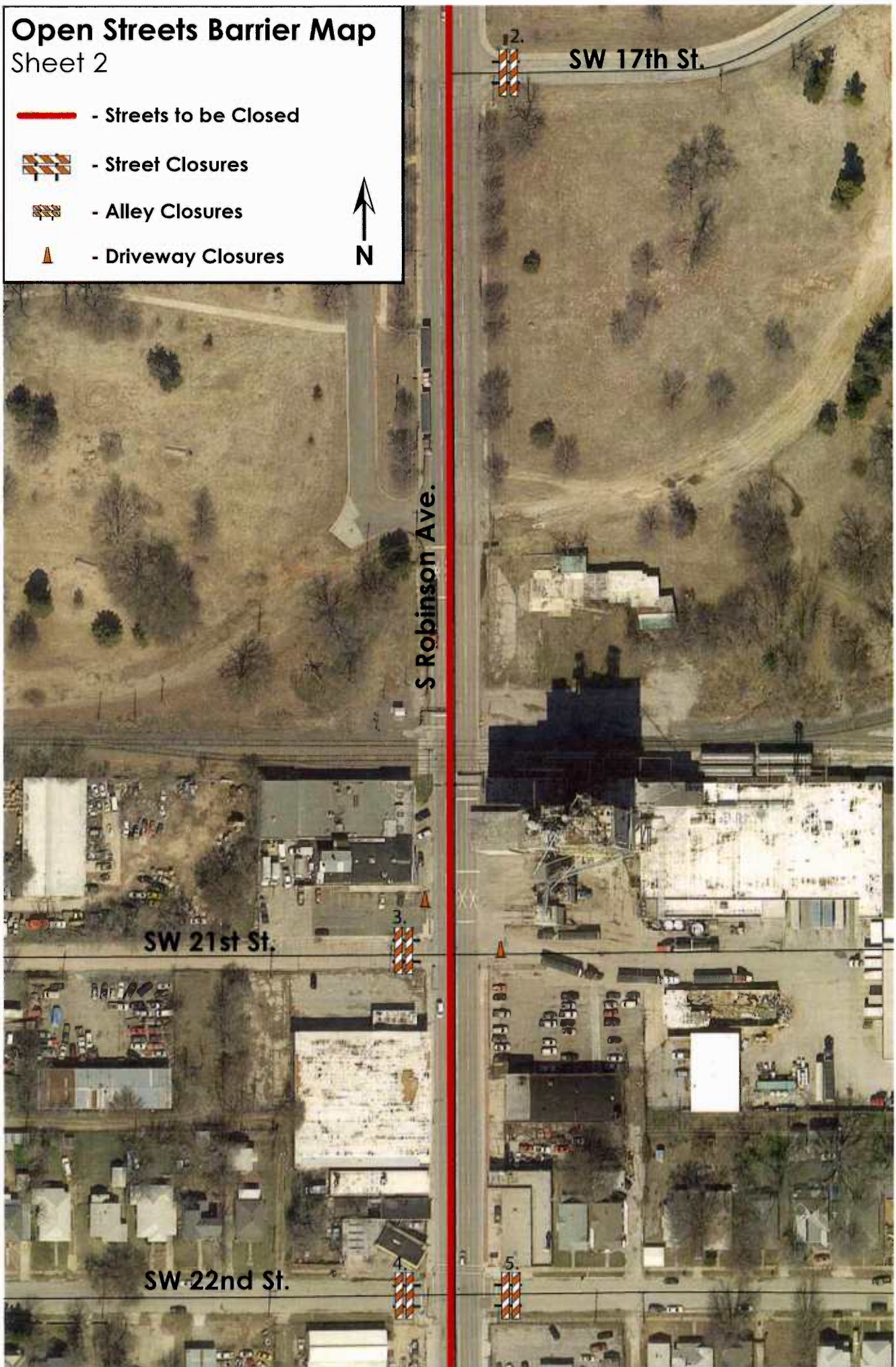
Sheet 2

 - Streets to be Closed

 - Street Closures

 - Alley Closures

 - Driveway Closures



Open Streets Barrier Map

Sheet 3

-  - Streets to be Closed
-  - Street Closures
-  - Alley Closures
-  - Driveway Closures



S Robinson Ave.



5. SW 22nd St.

6. SW 23rd St.

8. SW 24th St.

10. SW 25th St.

Open Streets Barrier Map

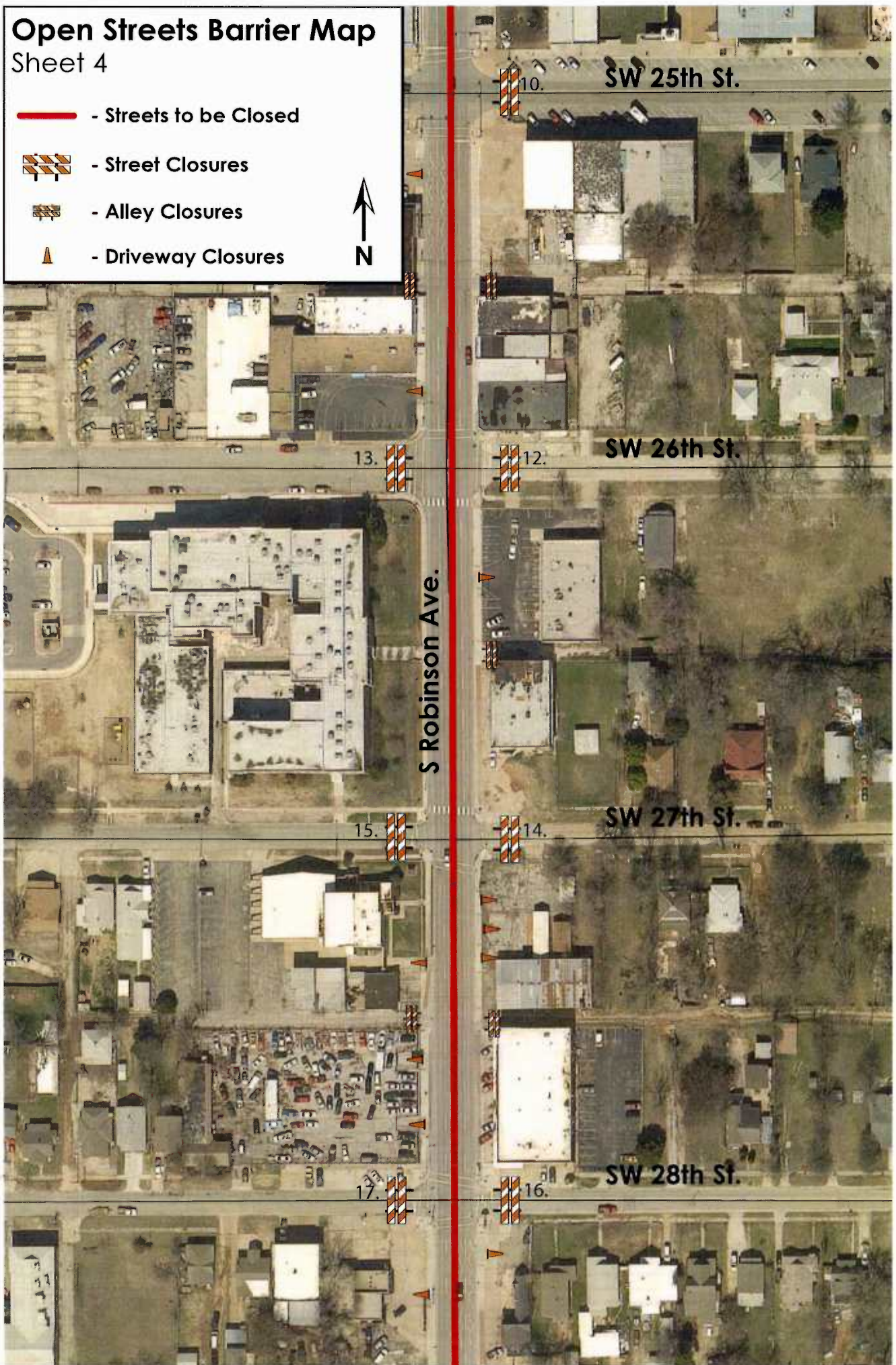
Sheet 4

 - Streets to be Closed

 - Street Closures

 - Alley Closures

 - Driveway Closures



Open Streets Barrier Map

Sheet 5

 - Streets to be Closed

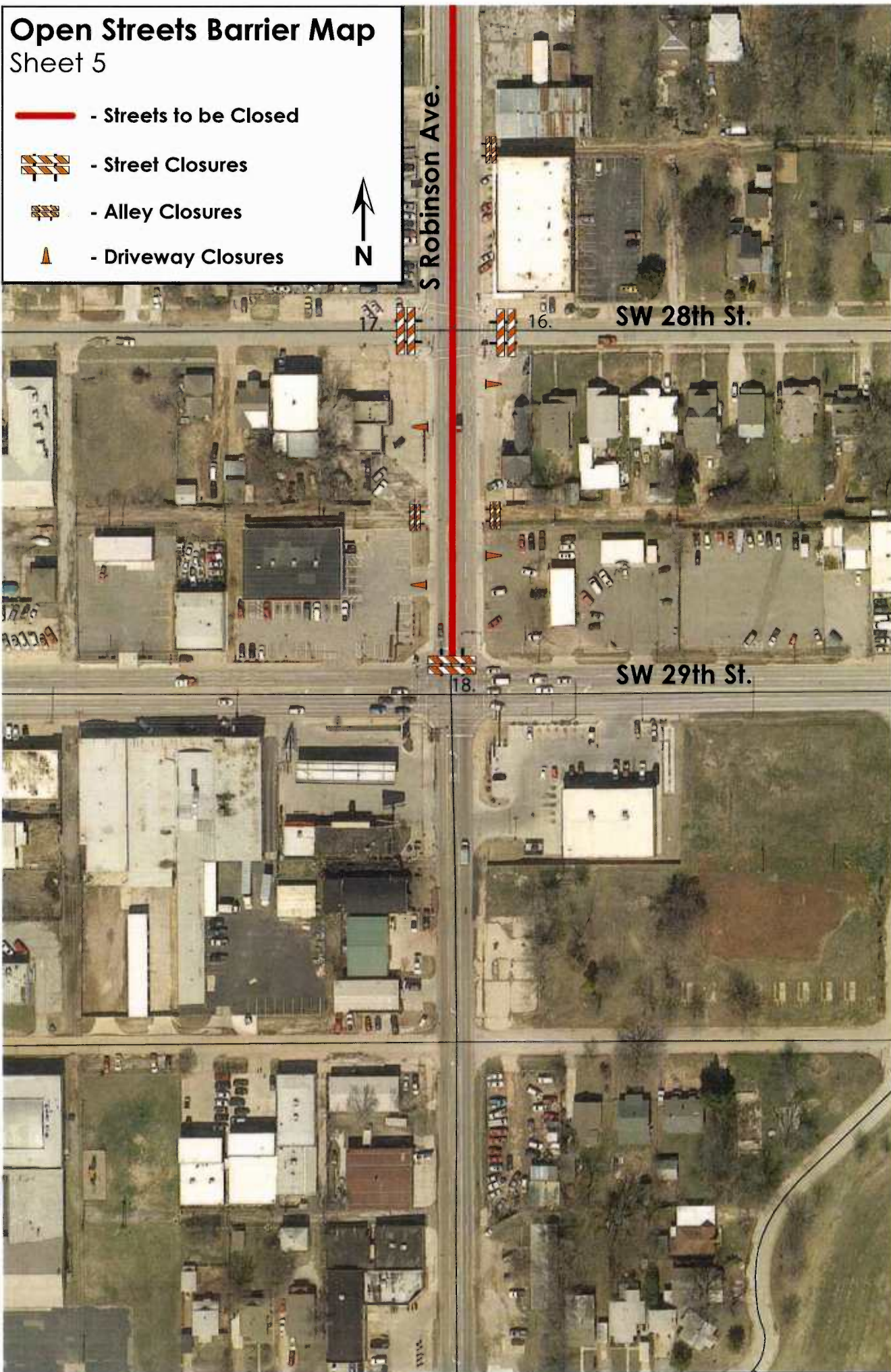
 - Street Closures

 - Alley Closures

 - Driveway Closures



S Robinson Ave.



SW 28th St.

SW 29th St.

Detour Plan Map

- Proposed Route
- Detour Route
- "Road Closed Ahead" Sign
- See attached detail maps

