

REVIEWING THE
STORM WATER
POLLUTION PREVENTION
PLAN (SWPPP)

2018 City of
Oklahoma City SWQ
Construction
Workshop

Bryan Jones

www.okc.gov/swq



STORM WATER POLLUTION PREVENTION PLAN (SWPPP)

A SWPPP is a written document that identifies structural and non-structural Best Management Practices (BMP's) that are installed to minimize negative impacts, caused by storm water discharges



EPA SWPPP TEMPLATE

The City of Oklahoma City requires that all projects over one acre follow the EPA Template

- The U.S Environmental Protection Agency (EPA) has developed an electronic SWPPP template.
- The template is designed to help guide you through the SWPPP development process to ensure that your SWPPP addresses all the necessary elements stated in the 2017 Construction General Permit.

<https://www.epa.gov/npdes/stormwater-discharges-construction-activities#resources>

USING THE TEMPLATE

- Complete the SWPPP prior to submitting the Notice of Intent (NOI) for permit coverage.
- If more than one operator is on the project, coordinate the SWPPP with the other operators. Therefore, multiple operators may use the same SWPPP but responsibilities and scope may be different.



SECTION 1: STORMWATER TEAM AND PROJECT/SITE INFO

- Identify the *operator(s)* who will be engaged in construction activities at the site. Indicate respective responsibilities and include a 24-hour emergency contact.

Definition of “operator” is any party associated with a construction project that meets either of the following two criteria:

- 1. The party has operational control over construction plans and specifications, including the ability to make modifications to those plans and specifications; or
- 2. The party has day-to-day operational control of those activities at a project that are necessary to ensure compliance with the permit conditions.

SECTION 1: STORMWATER TEAM AND PROJECT/SITE INFO

Storm Water Team

- Each operator, must assemble a “**storm water team**” which is responsible for overseeing the development and implementation of the SWPPP.
- Each member of the storm water team must have ready access to an electronic or paper copy of SWPPP.



SECTION 1: STORMWATER TEAM AND PROJECT/SITE INFO

- Sequence and Dates of Construction Activities
 - Installation of erosion controls
 - Commencement of earth moving activities
 - Temporary stabilization of areas where construction has ceased
 - Final stabilization of all bare areas
 - Removal of storm water erosion control measures
- Allowable Non-Storm Water Discharges



SECTION 2: SITE DESCRIPTION AND SITE MAP

- Project name and address
- Project Latitude/Longitude
- Discharge Information
 - *Name of Receiving water*
 - *Name of Impaired water/TMDL's*
- Nature of the Construction Activity*
 - Size of the total area to be disturbed
 - Support activities (concrete plant, staging yard, storage areas)



SECTION 2: SITE DESCRIPTION AND SITE MAP

□ Site Map

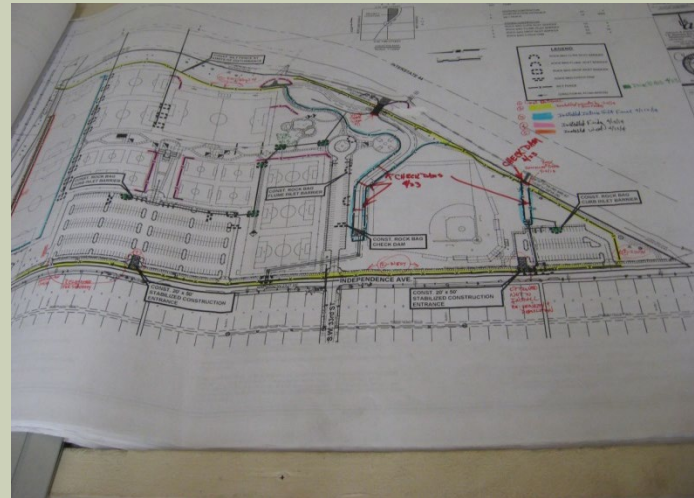
- Boundaries of job site
- Location of soil disturbing activities
- Location of stockpiles
- Vehicle entry/exit points
- Location of storm drain inlets
- Location of storm water control measures



SITE MAP

- Site map will be modified if control measures outlined within do not meet the goals of the plan, or if directed by the State or City officials.
- The site plan must be modified as phases of the project are completed.

***Should also be considered a “Living Document”!**



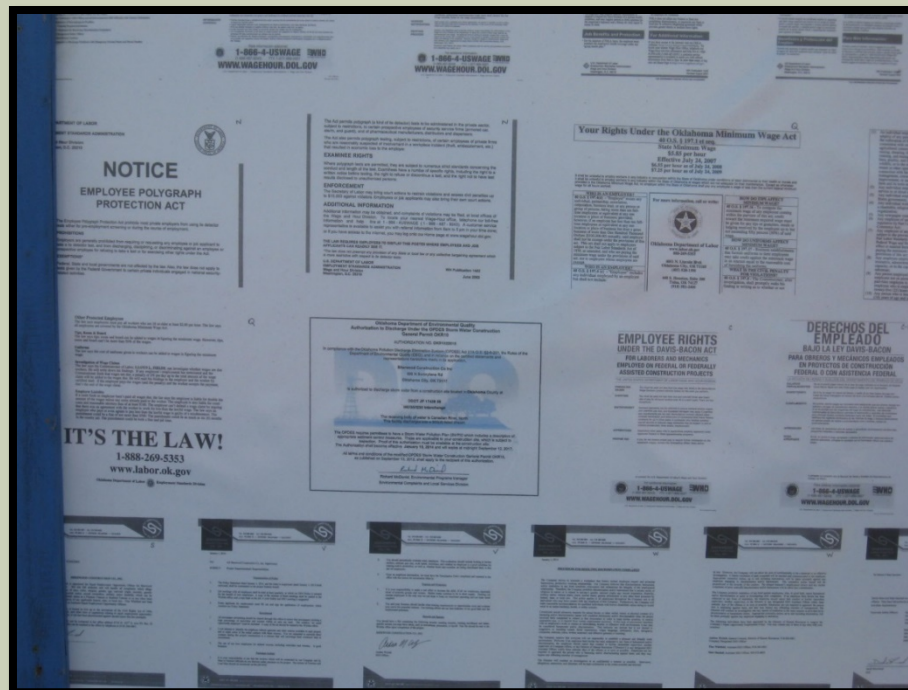
SECTION 3: CONSTRUCTION SITE POLLUTANTS

- a. Potential Sources of Pollution
- b. Spill Prevention and Response
- c. Fueling and Maintenance of Equipment/Vehicles
- d. Washing Equipment/Vehicles
- e. Storage/Handling/Disposal of Construction Products
- f. Washing of Paint, Concrete Containers
- g. Fertilizers



SECTION 4: COMPLIANCE WITH FEDERAL AND STATE REQUIREMENTS

- ❖ Endangered Species Protection
- ❖ Historic Preservation
- ❖ TMDL Requirements



SECTION 5: STORMWATER CONTROL MEASURES

- Natural Buffers or Equivalent Sediment Controls
- Perimeter Controls (silt fences, diversion dikes, fiber rolls)
- Sediment Track-out
- Stockpiled Soil
- Minimize Dust
- Minimize the Disturbance of Steep Slopes
- Storm Drain Inlets
- Sediment Basins
- Chemicals on-site
- Dewatering Practices
- Site Stabilization



SECTION 6: POLLUTION PREVENTION CONTROLS

- Spill prevention and responses
- Waste management procedures
- Prohibited discharges



SECTION 7: PROCEDURES AND DOCUMENTATIONS

- Personnel Responsible for Inspections
- Inspection Schedule
- Employee Training
- Inspection Report Forms
- Corrective Action Reports and Forms



INSPECTIONS FREQUENCY REQUIREMENTS

- **At least once every 7 calendar days; or**
- **Once every 14 calendar days and within 24 hours of the occurrence of a storm event of 0.25 inches or greater. To determine if a storm event of 0.25 inches or greater has occurred on your site, you must either keep a properly maintained rain gauge on your site, or obtain the storm event information from a weather station that is representative of your location.**

SECTION 7: PROCEDURES AND DOCUMENTS

- At a minimum, personnel must be trained to understand the following if related to the scope of their job duties includes conducting inspections;
 - ❖ The location of all stormwater controls on the site required by this permit, and how they are to be maintained;
 - ❖ The proper procedures to follow with respect to the permit's pollution prevention requirements; and
 - ❖ When and how to conduct inspections, record applicable findings, and take corrective actions.

SECTION 8: ADDITIONAL MONITORING (IF APPLICABLE)

- Quarterly Visual monitoring
- Asphalt Batch Plant
- Concrete Batch Plant



SECTION 9: SWP3 CERTIFICATION

- I certify under penalty of law that this document and all attachments were prepared under my direction or supervision in accordance with a system designed to assure that qualified personnel properly gathered and evaluated the information submitted. Based on my inquiry of the person or persons who manage the system, or those persons directly responsible for gathering the information, the information submitted is, to the best of my knowledge and belief, true, accurate, and complete. I am aware that there are significant penalties for submitting false information, including the possibility of fine and imprisonment for knowing violations.

SECTION 10 MODIFICATIONS AND ATTACHMENTS

Any modifications to the SWP3 will be made and kept in Section 10

Records are required be maintained for a period of at least three (3) years after the permit is terminated.

SECTION 11: ADDITIONAL DOCUMENTATION

- Site Maps
- Copy of 2017 CGP
- NOI and EPA Authorization
- Inspection Forms
- Corrective Action Forms
- SWPPP Amendment Log
- Sub Contractors Certifications
- Grading and Stabilization Activities Log
- Training Log
- Delegation of Authority
- Endangered Species Documentation
- Historic Preservation Documentation





UNDER 1-ACRE SWPPP FOR OKC

- Much smaller (6 pages)
- Can only be used for projects that are under 1 acre
- Inspection frequency of every 7 days is pre-determined
- Can usually be completely filled-out in the office

ONLY FOR USE OF LESS THAN ONE (1) ACRE OF DISTURBED AREA

**City of Oklahoma City
Storm Water Quality
STORM WATER POLLUTION PREVENTION PLAN**

Section 1: SITE EVALUATION, ASSESSMENT AND PLANNING

1.1 Project/Site information:
Project Name: _____
Site Location/Address: _____

1.2 Contact Information/Responsible Parties:
Company/Organization Name: _____
Address: _____
Phone/ Fax number: (Phone) _____ (Fax) _____
Email Address: _____
24-Hour Emergency Contact Name/Number: _____

1.3 Nature and Sequence of Construction Activity
Function of Construction Activity:
 Residential Commercial Linear Demolition Road Construction
Estimated Start Date: _____ Estimated Completion Date: _____
Construction Sequencing/Timing of all Major Events: (Phasing of the project, grading, installation of erosion controls, best management practices and stabilization activities)
The order of activities will be as follows:
1. _____
2. _____
3. _____
4. _____
5. _____
6. _____
7. _____

1.4 Construction Site Estimates:
Total Project Area: _____ Construction Site Area to be disturbed: _____

1

QUESTIONS

Thank You

Bryan Jones

City of Oklahoma City

Bryan.jones@okc.gov

www.okc.gov/swq

