

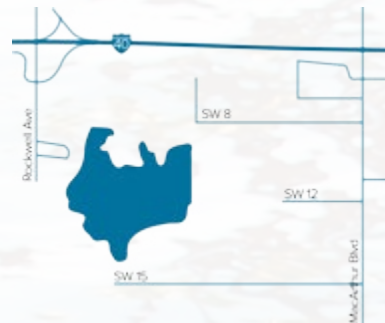
CITY LAKES

Lake Stanley Draper



SELECTED "CLOSE TO HOME" FISHING WATERS

Crystal Lake | 6625 SW 15th St



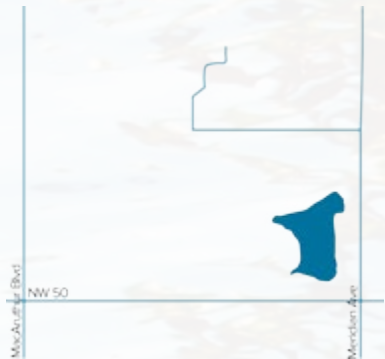
Kids Lake | 3200 W Wilshire Blvd



Lake Hefner



Dolese Youth Park Pond | 5105 NW 50th St



Kitchen Lake | 5501 SE 119th St



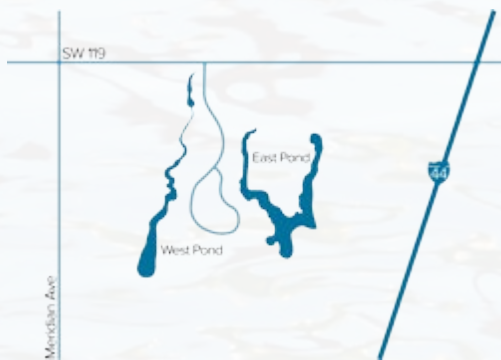
Lake Overholser



Edwards Fishing Lake | 1515 NE Bryant Ave



South Lakes Park Ponds | 4302 SW 119th St



PERMITS

Permit Vendors

The following is a list of businesses that have been approved and are currently selling lake activity permits for boating, fishing and hunting as of January 1, 2016.

City fishing permits are required for all three Oklahoma City lakes, the Oklahoma River and City waters designated as "Close to Home" fishing waters. Boat permits are also required for City lakes and the Oklahoma River. Hunting permits are required for waterfowl opportunities at Lake Draper and the Stinchcomb Wildlife Refuge.

Academy Sports & Outdoors
Oklahoma City, 4261 NW 63rd St (405) 767-3720
Oklahoma City, 7700 S Walker Ave (405) 440-6660
Edmond, 2501 S Broadway Ave (405) 715-4530
Norman, 2010 NW 24th St (405) 307-4700

Bass Pro Shop
Oklahoma City, 200 Bass Pro Dr (405) 218-5200

Cabela's
Oklahoma City, 1200 W Memorial Dr (405) 546-3500

City Care
Oklahoma City, 2400 General Pershing (405) 609-2400

Conoco Foodmart
Bethany, 8001 NW 39th St (405) 787-2249

Conoco
Midwest City, 9003 E Reno Ave (405) 732-5647

Dick's Sporting Goods¹
Moore, 760 SW 19th St (405) 378-5430

Fun Mart & Mix Shop
Oklahoma City, 6723 N Meridian Ave (405) 722-8658

Jones Bait and Tackle
Midwest City, 220 S Sooner Ave (405) 869-9890

Lake Draper Concession¹
Oklahoma City, 8301 SE 104th St (405) 799-0870

Lake Stop
Oklahoma City, 5801 W Britton Rd (405) 361-8442

Lucky Lure Tackle
Oklahoma City, 9427 N May Ave (405) 749-1808

Super Mart¹
Oklahoma City, 9001 NW 10th St (405) 787-5115

Walmart
OKC, Belle Isle, 1801 Belle Isle Blvd (405) 841-6502
OKC, Quail Springs, 2000 W Memorial (405) 752-1900
OKC, NW Expressway, 7800 NW Expressway (405) 773-2625

¹ Locations that also normally sell hunting permits beginning in September.

Permit Costs

Annual Fishing	\$18.50	Daily Fishing	\$3.50
Annual Boating	\$33.00	Daily Boating	\$6.25

All watercraft (including miniboots, canoes and kayaks) must have a City permit to be placed on City waters, including the City Lakes, Oklahoma River, Stinchcomb Wildlife Refuge, and certain "Close to Home" fishing waters.



2016 OKC FISHING REGULATIONS



CITY FISHING WATERS

City Lakes

- Lake Hefner**
located in NW Oklahoma City
- Lake Overholser**
located west of Bethany, OK (includes tallwaters to NW 10th Street Bridge)
- Lake Stanley Draper**
located southeast of Tinker AFB in Oklahoma City

“Close to Home” Fishing Waters

“Close to Home” waters are bodies of water designated under a cooperative fisheries management program between the City of Oklahoma City and the Oklahoma Department of Wildlife Conservation. It is important to observe the catch and release regulation for largemouth bass for future quality fishing at “Close to Home” fishing waters.

- Crystal Lake**²
6625 SW 15th Street
- Dolese Youth Park Pond**
5105 NW 50th Street
- Edwards Park Pond**
1515 N Bryant Avenue
- Kids Lake**¹
3200 W Wilshire Boulevard
- Kitchen Lake**^{1,3}
5501 SE 119th Street
- Route 66 Ponds**
3350 W Overholser Drive - Ponds A, B, C
- South Lakes Regional Park Ponds**^{1,3}
4302 SW 119th Street (East Pond Only)

- Zoo Lake**
2101 NE 50th Street
- ¹Fisherman Floats (tubes) allowed ²Tubes and boats allowed ³Miniboats with electric trolling motors allowed

Oklahoma River

Fishing access along the Oklahoma River extends downstream from NW 10th to the NE 10th Street bridge, and includes the Eastern, May Avenue, and Western Avenue river basins and wetland ponds.

Boat ramps are available along the south side of the Oklahoma River at the following locations:

- Lincoln Avenue Bridge (on Durland Avenue)
- Exchange Avenue Bridge (west of Exchange)
- SW 15th & Portland (east of Portland on 15th)

Fishing is *not allowed* on the Oklahoma River dams or within 100 feet upstream or downstream of the dams.

Accessibility

The City offers multiple fishing docks and piers that are accessible to persons using wheelchairs or mobility devices. For a complete list, please visit us online at okc.gov/parks or call (405) 297-1426.



CITY FISHING & BOATING PERMITS

Fishing Permits

A City fishing permit and Oklahoma state fishing license are required for all anglers aged 16 to 62 fishing on City lakes, the Oklahoma River, the Stinchcomb Wildlife Refuge and “Close to Home” fishing waters. A City permit is NOT REQUIRED for persons under 16, those 62 and older; persons who are legally blind, or who have a 60 percent or more disability.

Boating Permits

A City boating permit is required for ALL watercraft on City lakes, Crystal Lake, South Lakes East Pond, and Kitchen Lake. State registration is also required for all watercraft except canoes and kayaks.

PROHIBITIONS

- No spears or gigs
- No seines, cast nets or other nets allowed
- No snagging (“pulling” or “jerking” a hook or hooks through water to impale a fish)
- No trot, jug, yo-yo’s or limb lines
- No noodling (hands-only fishing) except in the Oklahoma River, downstream from the NW 10th Street bridge to the MacArthur Street bridge.

ALL WATERS

RESTRICTIONS

Rods and Reels

Anglers can use a maximum of three rods and three reels per person, with no more than three hooks per line. Restriction does not apply to artificial lures with more than three hooks.

Bow Fishing - City Lakes Only

Bow fishing is allowed only during daylight hours at Draper, Hefner and Overholser lakes. No crossbows. Arrows may have no more than one point and no more than four barbs on each point.

Fisherman Floats (Tubes)

Fisherman floats are allowed only during daylight hours, within 100 feet of any shoreline. Life jackets and watertight waders required.

Fisherman floats are allowed on City lakes, coves and tributaries of the Oklahoma River, at Kids Lake, Kitchen Lake, Crystal Lake and South Lakes East Pond.

For more information about fishing regulations and permits, visit okc.gov/parks or call (405) 297-1426.

DAILY POSSESSION AND LENGTH LIMITS

City Lakes

- Largemouth and Smallmouth bass**
6 combined (14” minimum*), only 1 smallmouth bass
- Striped hybrid bass**
20, only 5 over 20”
- Spotted bass**
none
- Channel and blue catfish**
15 combined; only 1 blue catfish over 30”
- Crappie**
37
- Walleye**
6 (14” minimum*)
- Flathead catfish**
5

“Close to Home” Fishing Waters

- Largemouth bass**
Catch and release
- Spotted bass**
none
- Channel and blue catfish**
6 combined; only 1 blue catfish over 30”
- Crappie**
37
- Flathead catfish**
5
- Rainbow trout**
6

* Fish caught smaller than the listed minimum size must be returned to the water immediately. Length is measured from tip of snout to end of tail, with fish laid flat on a ruler, mouth closed and tail pressed together.

BLACK BASS IDENTIFICATION

To tell the difference between a largemouth, smallmouth and spotted bass, look where their mouth hinges.

Largemouth Bass	Smallmouth Bass	Spotted Bass
Mouth hinge behind eye	Mouth hinge in front of eye	Mouth hinge even with eye

Another way to distinguish largemouth from smallmouth or spotted bass is by looking for a tongue/tooth patch.



Largemouth bass have no tooth patch on their tongue



Smallmouth and spotted bass display a tooth patch on their tongue

ANNUAL TROUT SEASON

December 1, 2015 - February 29, 2016

Dolese Youth Park Pond, 5105 NW 50th

Catchable rainbow trout are stocked in the pond every two weeks throughout the season.

Trout Season Regulations

- Oklahoma state fishing license and City fishing permit are required
- Fishing is by rod and reel only, one rod and reel per person
- Daily catch limit: 6 trout per person
- Trout on a stringer or held in position cannot be released
- Anglers must have their fish on an individual stringer with their name and State fishing license number attached

FISHING FROM BANK ONLY

The 2015-16 trout season is sponsored by Dolese Brothers, Inc., the 89er Chapter of Trout Unlimited, and is presented in partnership with the Oklahoma Department of Wildlife Conservation as part of the “Close to Home” fishing program.

Trout Fishing Clinic

Anglers of all ages are welcome to attend a FREE trout fishing clinic. Instruction will focus on the best techniques for catching trout, including bait, knots, lures and casting techniques.

Friday, January 8, 2016 - 7-8:30pm

Putnam City High School Gymnasium, 5300 NW 50th Street
Register in advance by calling (405) 297-1426

SAFETY AND ENFORCEMENT

The Oklahoma City Police Department Lake Patrol and Oklahoma Department of Wildlife Conservation enforce fishing regulations on all City Lakes and “Close to Home” fishing waters.

For emergencies or to report violations
911

Oklahoma Department of Wildlife Conservation Law Enforcement
(405) 521-3719

Oklahoma County Game Warden
(405) 203-3178

Cleveland County Game Warden
(405) 850-9757

FISHING EDUCATION

Our FREE “Hooked on Fishing” classes provide first-time anglers ages 5-15 with plenty of fun. Instruction includes knot tying, casting, fish identification, angler ethics and more. Children must be accompanied by an adult. Equipment provided during class. Fish caught are released back into the water.

City fishing permits and State license are not required during class time.

“Hooked on Fishing” is sponsored in part by the ODWC and Oklahoma City Police Athletic League.

Register in advance by calling (405) 297-1426.

2016 Clinic Dates and Locations

- May 7, June 11, and June 9**
Edwards Park Lake, 1515 N Bryant Avenue
- July 23**
Crystal Lake, 6625 SW 15th Street
- May 21**
South Lakes East Pond, 4302 SW 119th Street
- May 14, June 18, July 16**
Metro Tech Spinglake Campus, 1900 Springlake Drive
- June 14**
Dolese Youth Park Pond, 5105 NW 50th Street

FREE OKLAHOMA CITY FISHING DAYS

Join the City of Oklahoma City for FREE FISHING DAYS the first Saturday of each month. No City permit required on the following dates in 2016 (A State fishing license is required). Applies to City Lakes, Oklahoma River, Stinchcomb Wildlife Refuge and OKC “Close To Home” fishing waters.

January 2	July 2
February 6	August 6
March 5	September 3
April 2	October 1
May 7	November 5
June 4-5 National Fishing Days (No state fishing license required)	December 3

City and State fishing regulations apply. Visit okc.gov/parks for additional information.

H.B. PARSONS FISH HATCHERY OPEN HOUSE

Friday, April 22, 2016 - 9am-4pm