

MAPS 4

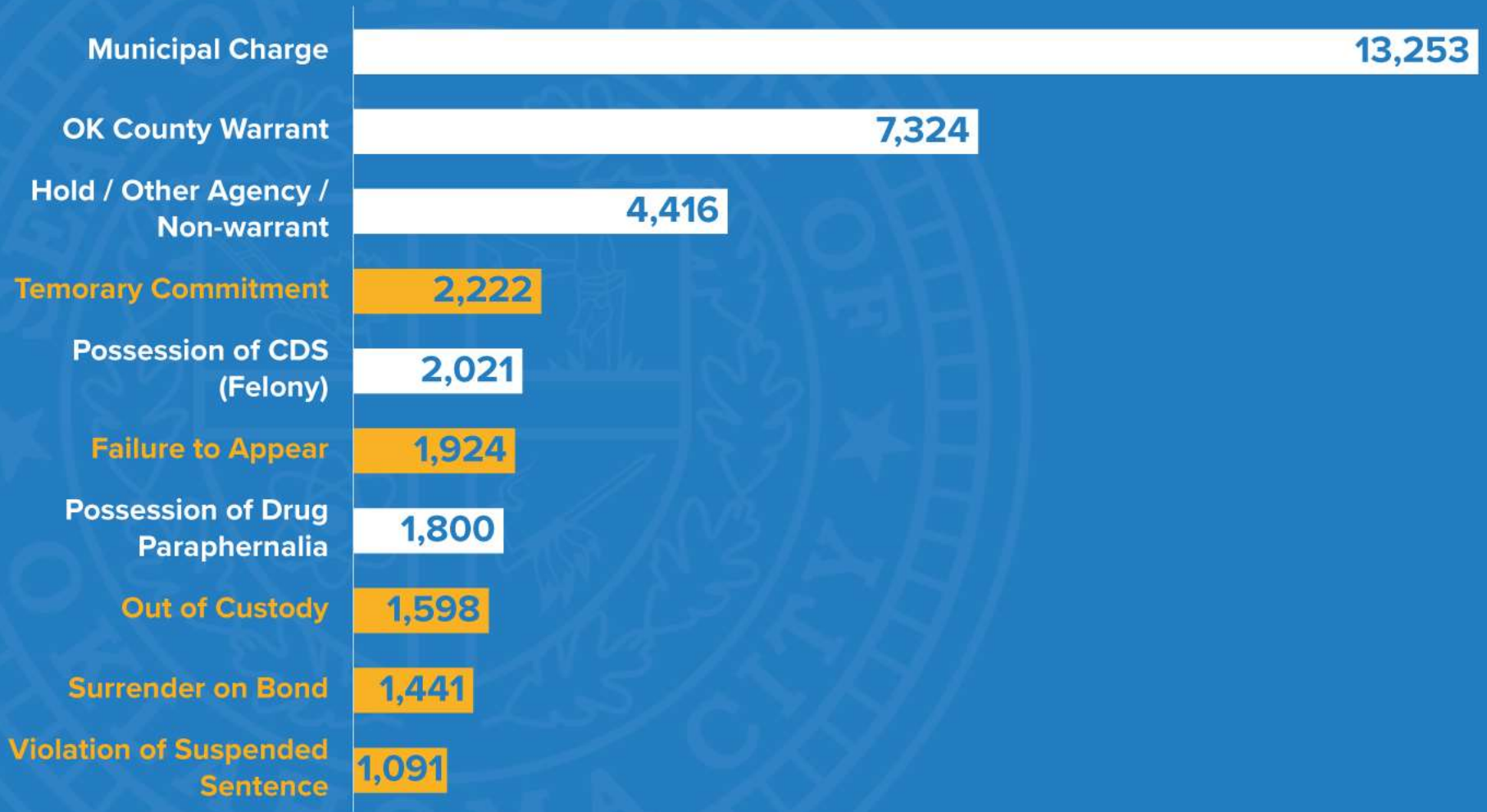
DIVERSION HUB

#maps4

The background of the slide features a large, faint, light blue watermark of the Seal of the City of Oklahoma. The seal is circular and contains a central shield with various symbols, surrounded by the text "SEAL OF THE CITY OF OKLAHOMA" and "1907".

WHERE WE ARE NOW

Top 10 Most Frequent Arresting Charges



Source: Vera Institute of Justice, 2016 Report <https://www.vera.org/publications/oklahoma-city-chamber-criminal-justice-task-force-report>

WHERE WE ARE NOW

Navigating our current justice system is a struggle



We recognize there are service gaps



DIVERSION

H K  B

THE CONCEPT

A multi-agency network for
Oklahoma County, helping thousands of
individuals receive coordinated,
life-stabilizing services

Justice Navigation



Communication



The background of the slide features a large, faint, light blue watermark of the Seal of the City of Oklahoma. The seal is circular and contains a central shield with various symbols, surrounded by the text "SEAL OF THE CITY OF OKLAHOMA" and "1907".

KEY SERVICE AREAS

KEY SERVICE AREAS

Housing



Education



Employment



Family Support



Mental Health



Navigating
Civil Concerns



Substance Abuse



- Emergency
- Transitional
- Permanent



HOUSING

- **Basic literacy skills**
- **High school equivalency diploma**
- **General computer skills**



EDUCATION

- **Job preparation**
- **Sector-based skills training**
- **Job placement assistance**
- **Job retention services**



EMPLOYMENT

- **Healthy family relationships**
- **Access to legal services**
- **Custody**



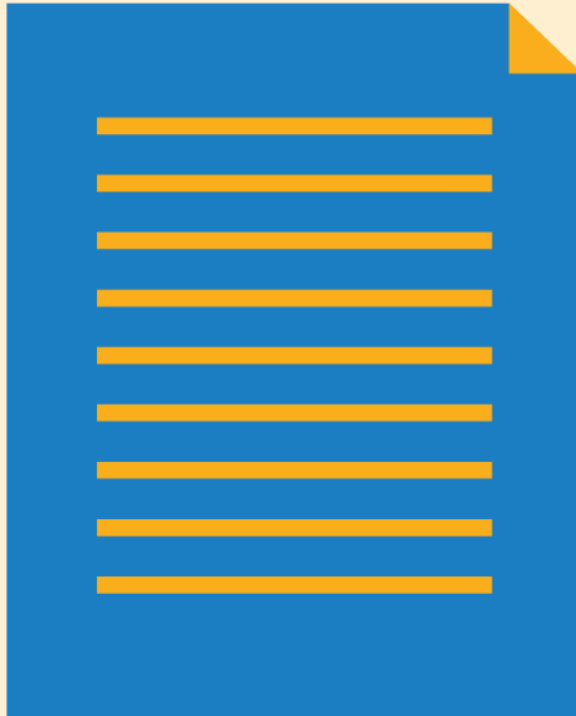
FAMILY SERVICES

- **Assessments**
- **Referrals**
- **Treatment**



MENTAL HEALTH SERVICES

- **Veteran specific assistance**
- **Benefits application assistance**
- **Financial management and budgeting services**
- **Reinstating driver's licenses**



NAVIGATING CIVIL CONCERNS

- Licensed agencies
- Outpatient treatment
- Drug tests

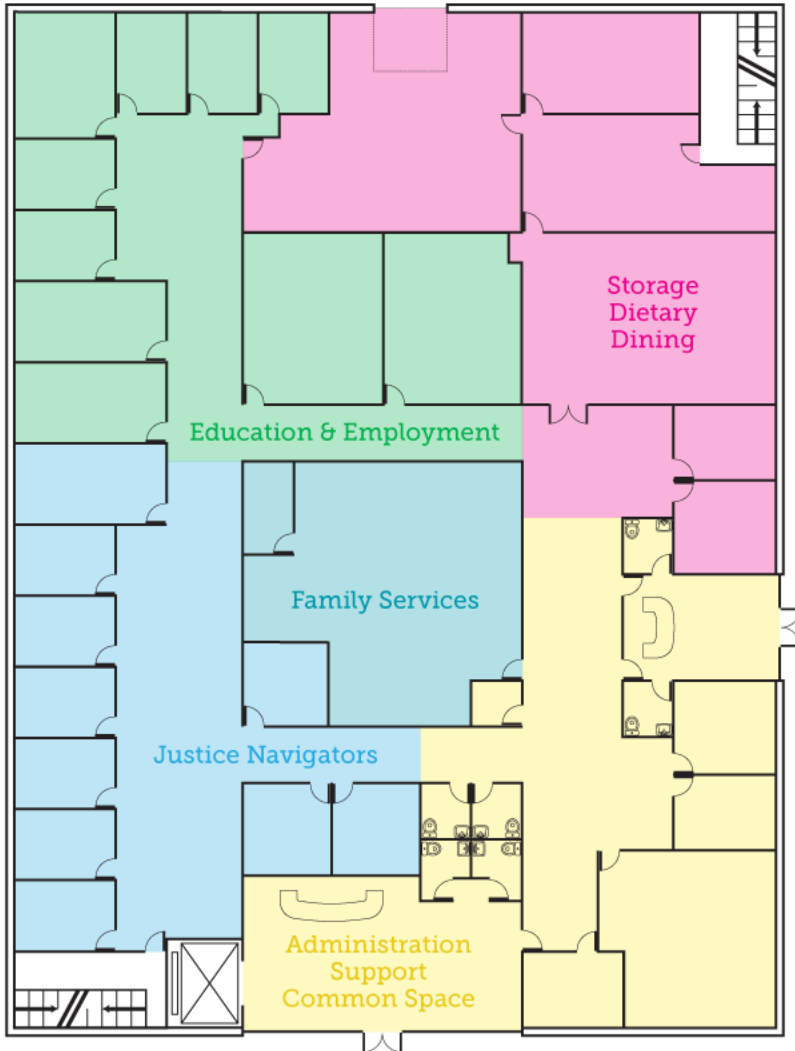


SUBSTANCE ABUSE SERVICES

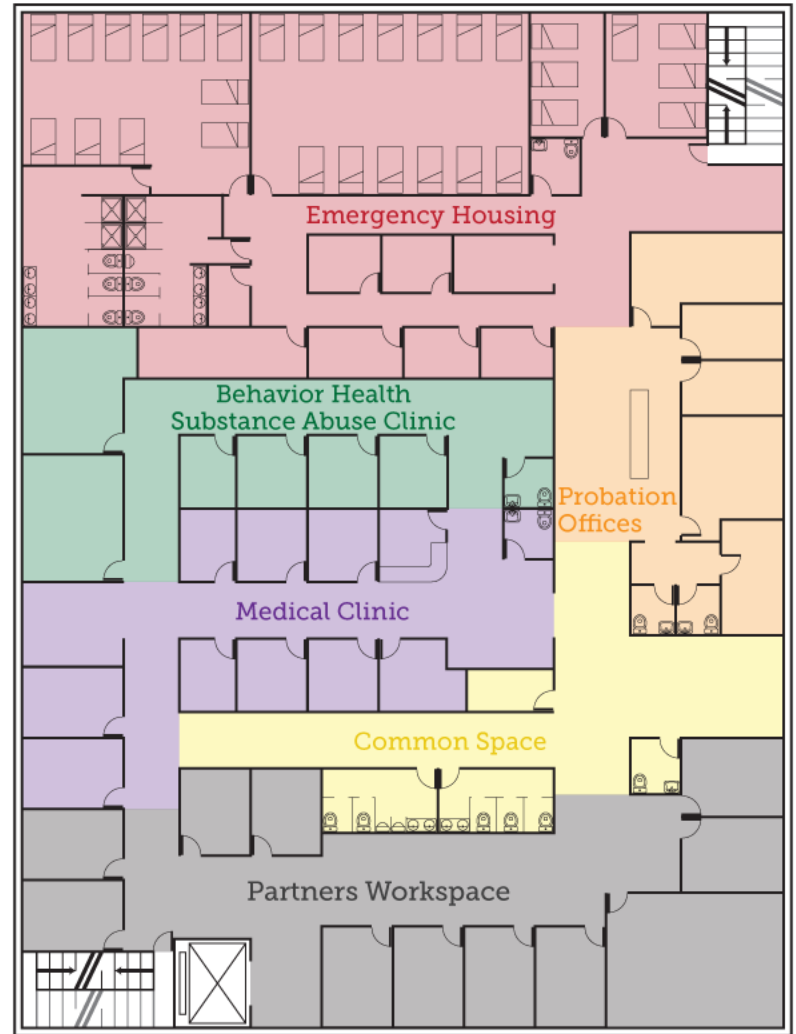


Diversion Hub

- Common Space
- Justice Navigators
- Dietary & Storage
- Family Services
- Education & Employment
- Emergency Housing
- Behavior Health
- Medical Clinic
- Probation Offices
- Partners Workspace



First Floor



Second Floor

Proposed Costs

Land	\$1,000,000
Building Construction	\$10,500,000
Soft Costs	\$2,625,000
IT	\$1,400,000
FF&E	\$1,000,000
<hr/>	
TOTAL	\$15 – 18MM

Community Impact

Short-term outcomes:

- Reduced FTAs for those engaging with Hub
- Number of successful probation completions
- Client self-reports of improvement (employment, training, housing, etc.)

Long-term outcomes:

- Reduced number of individuals detained pretrial
- Lowering DOC admissions
- Lower recidivism for individuals engaged with Hub

CONCLUSION

A multi-agency network for
Oklahoma County, helping thousands of
individuals receive coordinated,
life-stabilizing services

Help Thousands of
Oklahomans



Bridge Service Gaps

