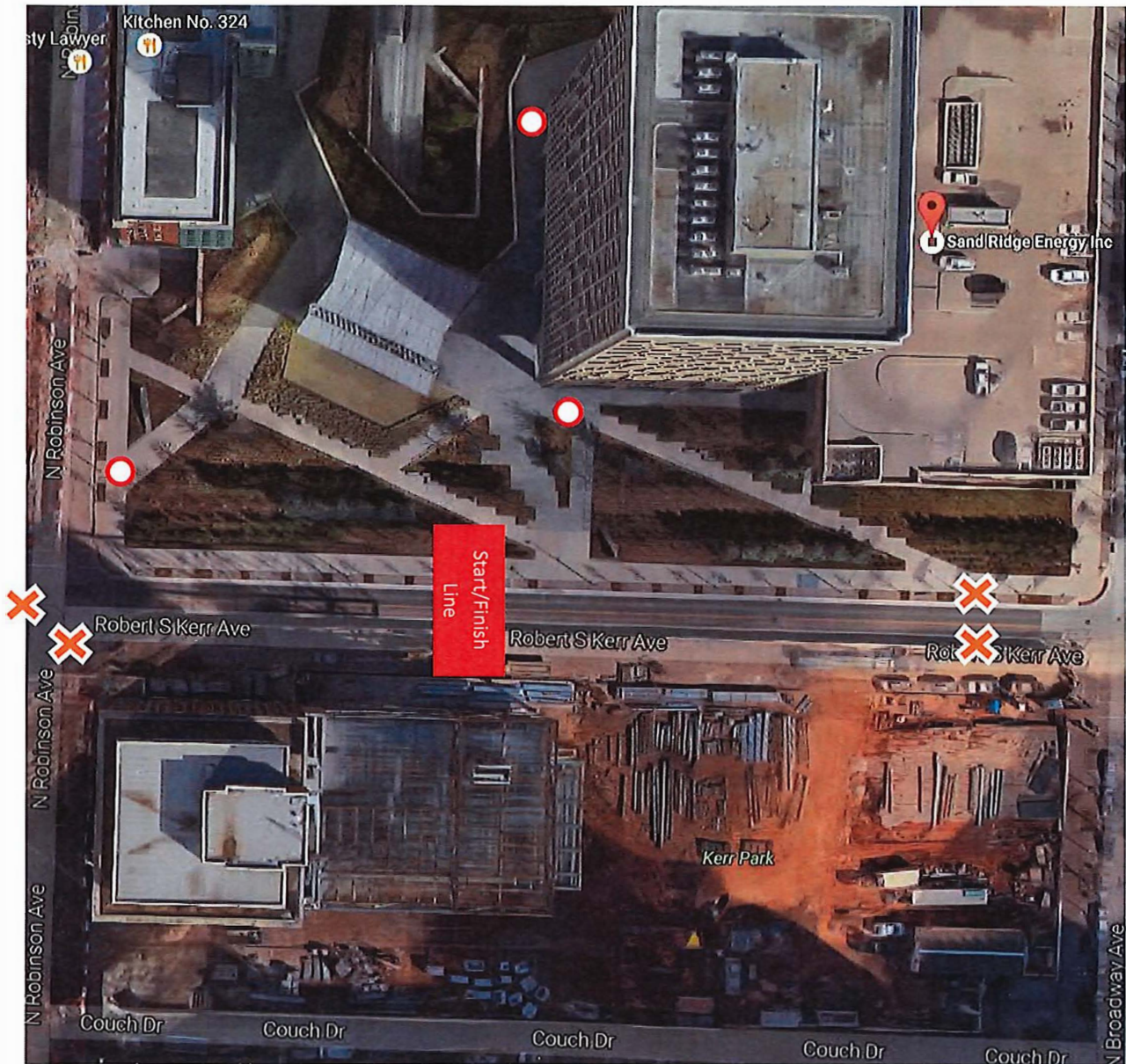


Exhibits A-1 & C– Event Site Map



Tables: 16

Chairs: 23

Sign holders: 6

4x8 stage



Event signs - TBD



Trash cans – First Maintenance will provide



6 ft. tables

Trail Mix Bar/Bottled Water: 3 tables

Face Painting: N/A

Check-In/Registration: 3 tables, 4 chairs

SNL Booth: 2 tables, 2 chairs

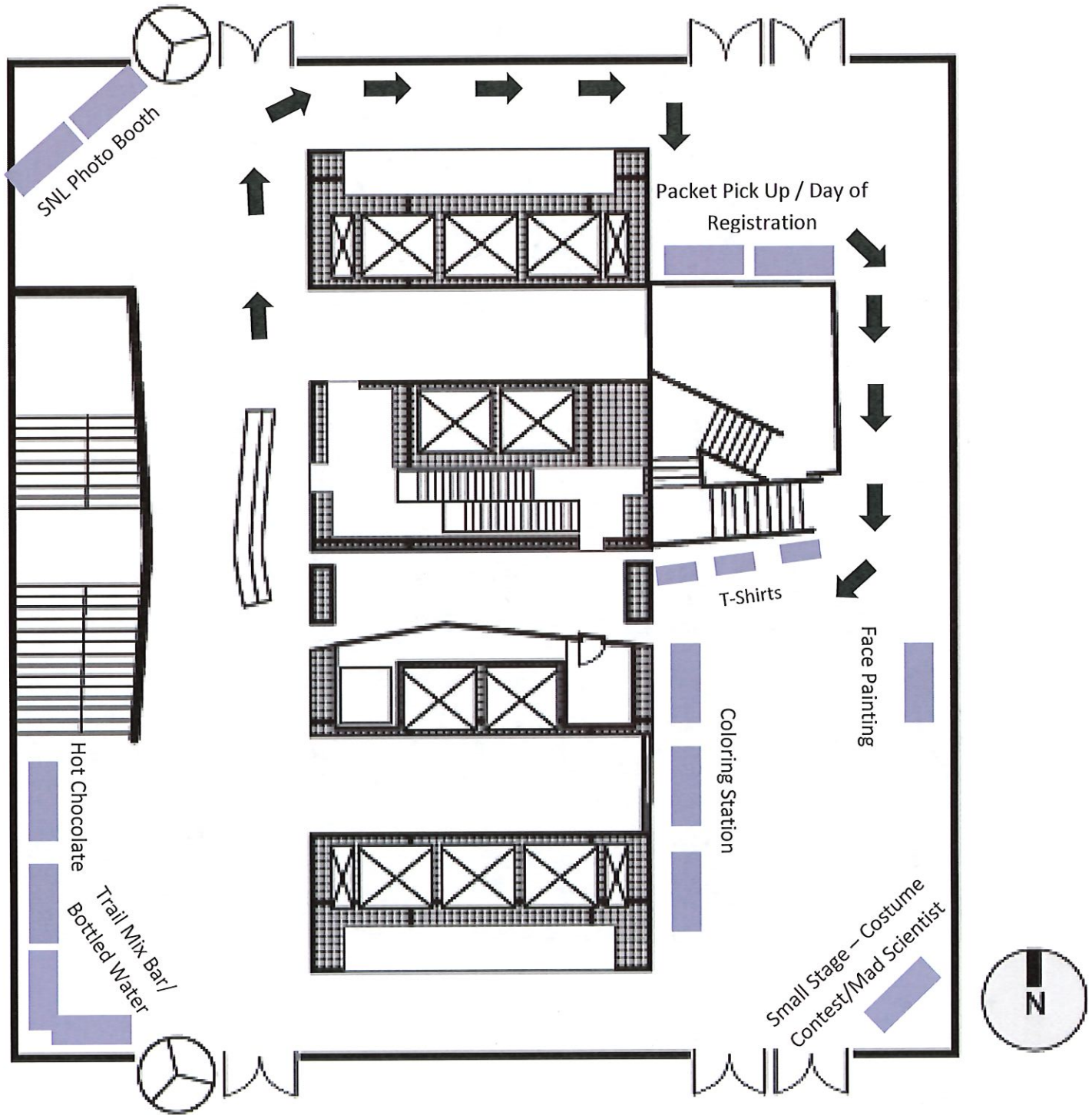
T-shirts: 3 tables, 2 chairs

Water Stop (18<sup>th</sup> & Hudson): 2 tables & trash can/receptacle

Judges: 1 table, 3 chairs

Coloring Station: 3 tables, 12 chairs

Exhibit A-2



# Sandridge 5K #4

Oklahoma City, OK – 5,000 meters

USATF Certification  
OK17063DG

Effective Dates  
12/7/17-12/31/27



This course follows the shortest possible route (SPR) over the whole roadway/trail. No restrictions. Map not to scale.



Measured by Jason Dixon  
12/6/17  
(405) 684-6944  
jason@dgroadracing.com

