

NOTICE TO ARCHITECTS, ENGINEERS, AND PLANNERS

NOTICE IS HEREBY GIVEN, that the City of Oklahoma City has a project that requires the services of a consulting firm.

In order to be considered, the Consultant must comply with the Resolution establishing procedure for "Selection of Architects, Engineers, and Planners" adopted by the City Council on November 18, 1986, a copy of which may be obtained at www.okc.gov/departments/public-works/engineer-architect-resources/notice-to-a-e from the office of the Public Works Department Director.

Project Title: SC-0915, Lift Station Improvements at Various Locations

Scope of Work: This project requires an evaluation and life cycle cost analysis with the intent of reducing or eliminating as many lift stations and replacing them with gravity sanitary sewer lines. The contract may be amended to include final plans and specifications, bidding services, construction management, construction inspection services and as-builts. Additional information for each lift station is available for review on www.okc.gov/departments/public-works/engineer-architect-resources/notice-to-a-e.

Estimated Construction Cost to be Determined

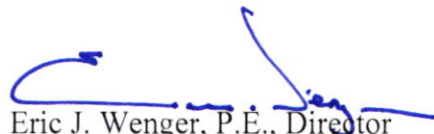
A question and answer session will be held from 10:00 to 11:00 am on March 20, 2020 at 420 W. Main Street, on the 10th Floor Conference Room. Please address your questions at the meeting.

As a part of your Letter of Interest, provide your understanding of the project and your expertise and experience on similar projects. **Please provide a contact name and email address in your letter of interest.**

Refer to the basic contract located on www.okc.gov/departments/public-works/engineer-architect-resources/notice-to-a-e. All contracts with the City or its related Trusts use this contract. Please review the contract to ensure insurance and indemnity requirements will be met.

Please include a 254 Form with your Letter of Interest.

Time Schedule for the above project: The Preliminary Engineering Report is required in one hundred twenty (120) days of the issuance of the Work Order. Last date for submitting Letter of Interest **(two copies of letter and all attachments and an electronic copy, provided on a flash drive)** to the Public Works Department Director, 420 W. Main Street, Suite 700, Oklahoma City, OK 73102: prior to 5:00 p.m. March 30, 2020. Emailed submittals are not being accepted at this time.

A handwritten signature in blue ink, appearing to read "Eric J. Wenger", with a long horizontal stroke extending to the left and a loop at the end.

Eric J. Wenger, P.E., Director
Public Works/City Engineer



The City of
OKLAHOMA CITY
UTILITIES DEPARTMENT

January 15, 2020

Project Title: Lift Station Improvements

Project Location: Oklahoma City Wastewater Collection System:

Area 1

Lift Station No. 3 – 7101 N Portland Avenue
Lift Station No. 4 – 4327 NW Expressway
Lift Station No. 24 – 7644 N Portland Avenue

Area 2

Lift Station No. 25 – 3104 E Overholser Drive
Lift Station No. 26 – 8346 NW 23rd Street
Lift Station No. 27 – 2131 Eagle Lane
Lift Station No. 68 – 1800 E Overholser Drive

Area 3

Lift Station No. 42 – 5413 N Rockwell
Lift Station No. 43 – 5806 Philip J. Rhoads
Lift Station No. 44 – 7155 NW 63rd Street

Area 4

Lift Station No. 52 – 10819 W Highway 66

Project Number: SC-0915; Lift Station Improvements

Estimated Project Cost: To Be Determined

Background: OCWUT is requiring an engineering evaluation with the intent of reducing or eliminating as many lift stations as feasible and replace the lift stations with gravity sanitary sewer lines.

Project Description: This project will be to prepare a Preliminary Engineering Report, followed by an engineering amendment for Plans and Specifications for the above reference project. This project consists of the following items:

1. Area 1- Lift Station No. 3, 4, and 24 at Edgewater/NW Expressway area: Determine all the flows from the sewer shed entering into the lift stations to determine and evaluate if all or some of the lift stations can be combined into one lift station or eliminated by a gravity line. If these options are not feasible, Lift Station 4 will be rehabilitated to reliable service until future development plans are established and Lift Station 3 and associated force main will be replaced.

2. Area 2- Lift Stations No. 25, 26, 27, and 68 located on the east side of Lake Overholser by The City of Bethany: Determine all the flows from the sewer shed entering into the lift stations to

determine and evaluate if the lift stations can be replaced with a gravity system or a combined system with only one lift station. If these options are not feasible, Lift Station 26 and associated force main will be replaced.

3. Area 3- Lift Stations No. 42, 43, and 44 at Wiley Post Airport: Determine all the flows from the sewer shed entering into the lift stations to determine if the lift stations can be replaced with a gravity system or a combined system with only one lift station connecting to the City of Bethany. If these options are not feasible, Lift Station 42, 43, and 44 with the associated force mains will be replaced.

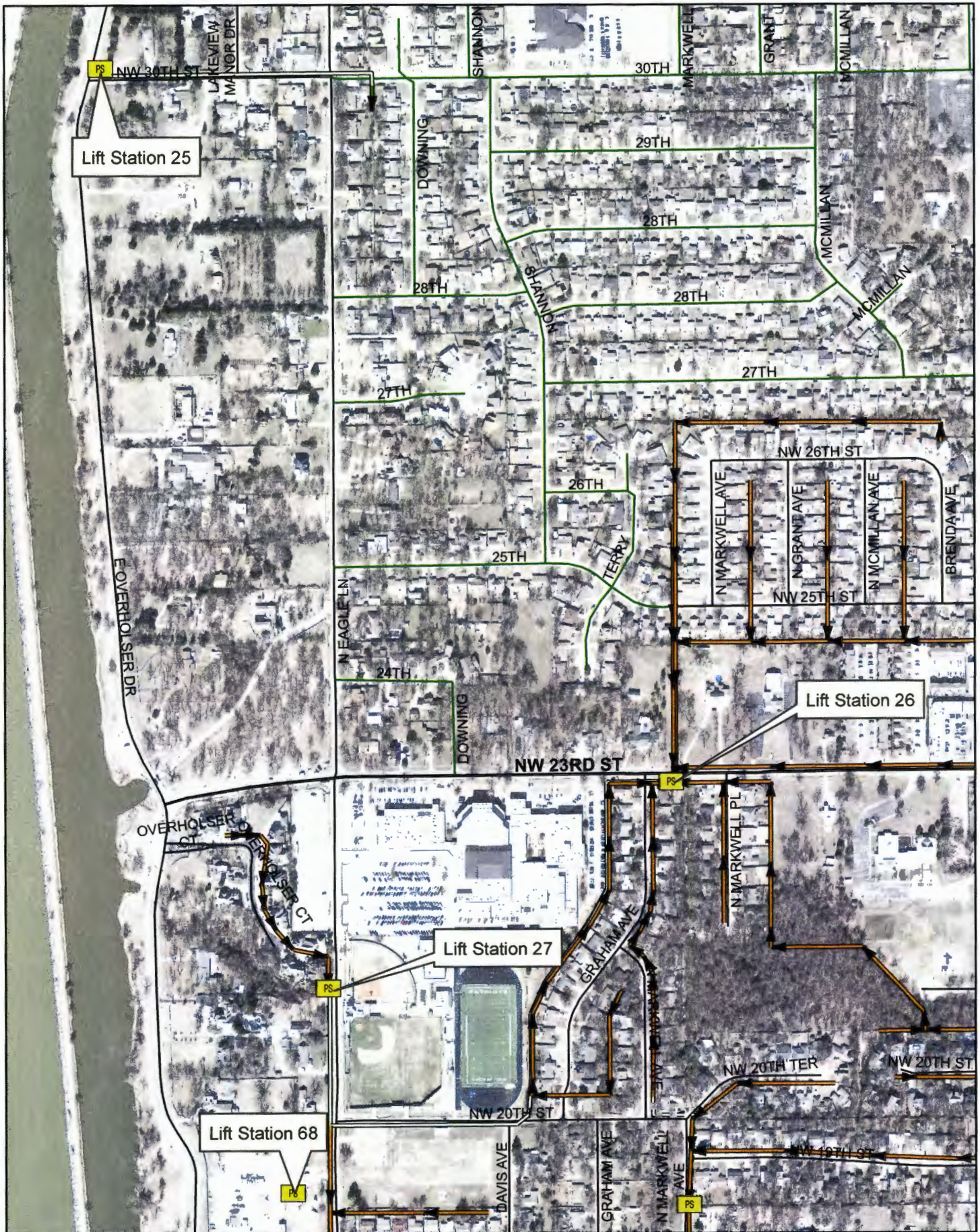
4. Area 4- Lift Station No. 52 Replacement – Determine all the flows from the sewer shed entering the lift station and evaluate sending sewer to Yukon with a gravity line. If this option is not feasible, Lift Station 52 and the associated force main will be replaced.

OCWUT is requiring an engineering evaluation and life cycle cost analysis in the engineering report with the intent of reducing or eliminating as many lift stations as feasible and replace the lift stations with gravity sanitary sewer lines.

An engineering report will be required within 120 calendar days. Contract will be amended to include final plans, specifications, construction administration and management, and construction inspection services based on the outcome of the report.

Project Intent: The Engineer will prepare one Engineering Report for all four (4) areas of the above referenced project.

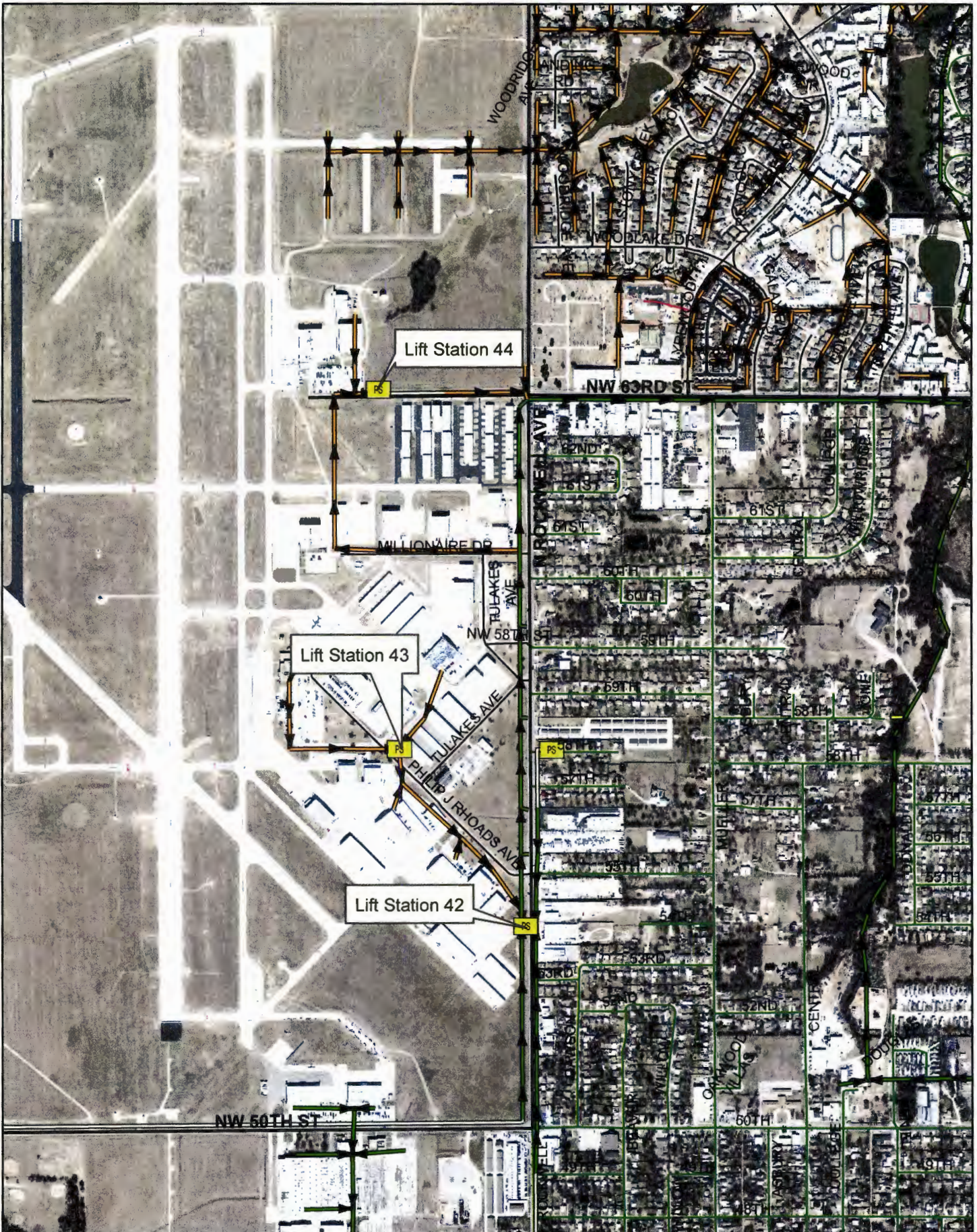
CB/SS/RP/rm



Created Date: 1/6/2020
 Created By: R. Pierce

SC-0915
 Overholser
 LS 25, LS 26, LS 27, and LS 68

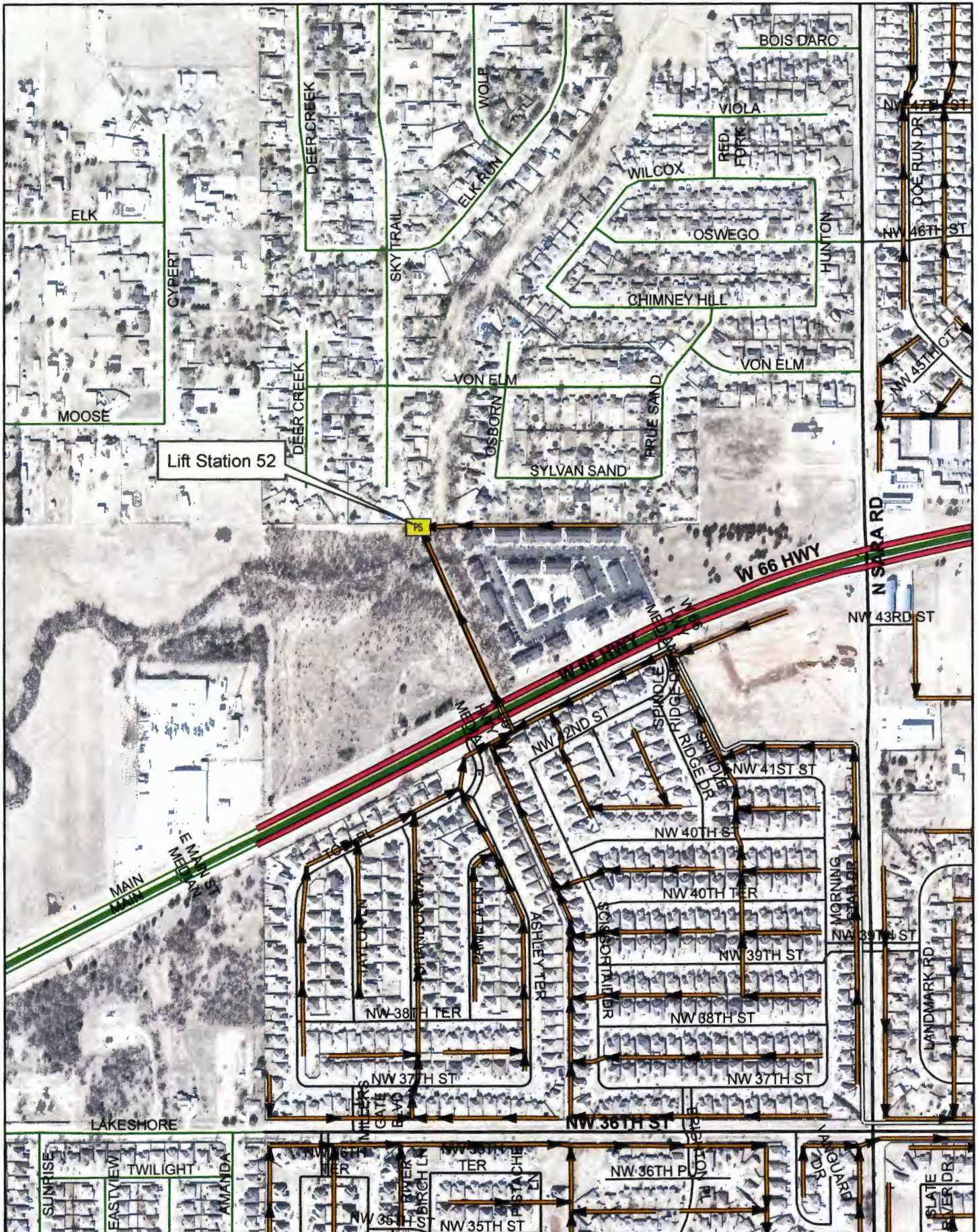




Created Date: 1/6/2020
 Created By: R. Pierce

SC-0915
 Wiley Post Airport
 LS 42, LS 43, and LS 44





Created Date: 1/6/2020
 Created By: R. Pierce

SC-0915

Lift Station 52

