



City Manager Report

The City of OKLAHOMA CITY

NO: 1541

DATE: JULY 7, 2020

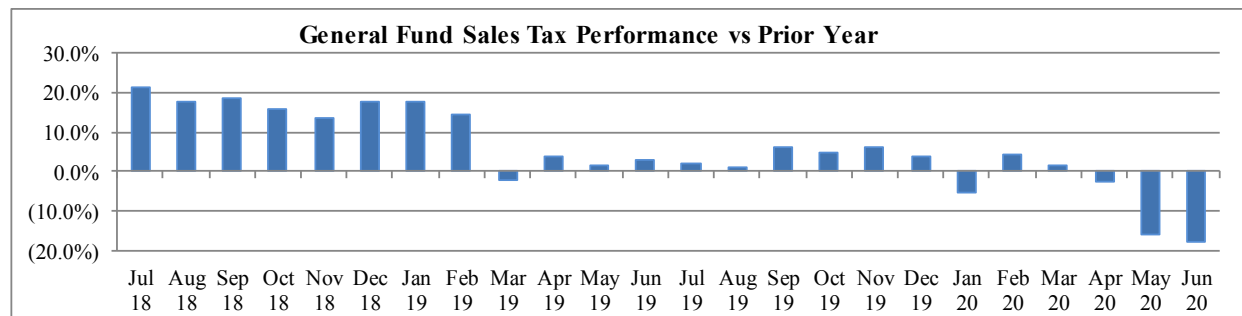
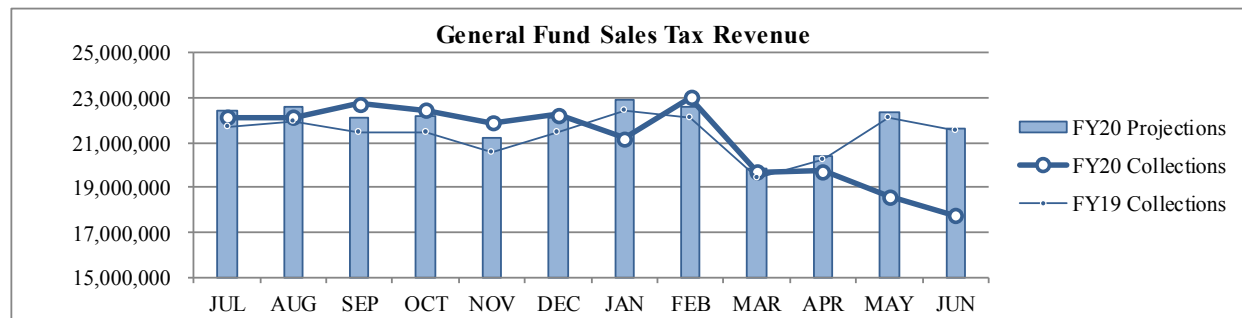
TO: THE MAYOR AND MEMBERS OF THE CITY COUNCIL

SUBJECT: JUNE 2020 SALES AND USE TAX COLLECTIONS

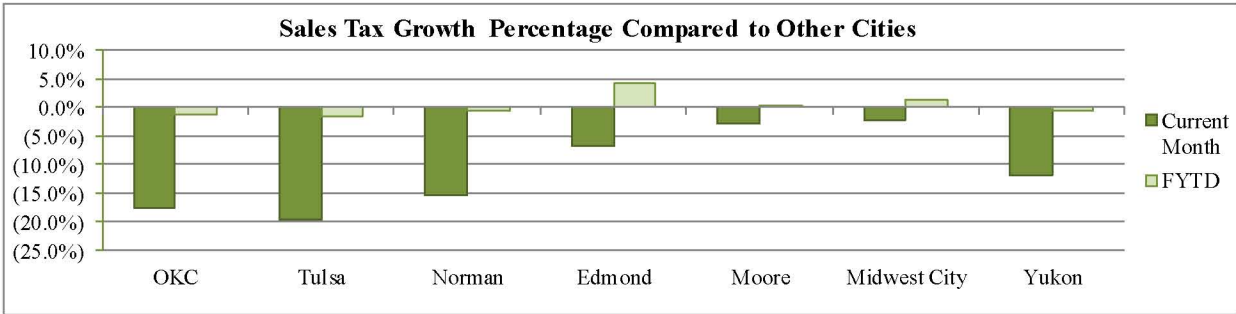
The majority of the June remittance includes actual collections for the second half of April and estimated collections for the first half of May. Combined sales and use taxes for the General Fund are \$7,777,079 or 2.4% below projections for the year. The quarter cent increase to the General Fund on January 1, 2018 began impacting collections in March 2018 and continued to affect year-to-year comparisons through February 2019.

General Fund Sales Tax

SALES TAX PERFORMANCE (vs Projection)				SALES TAX PERFORMANCE (vs Prior Year)			
Jun 20	Projection	\$ Diff	% Change	Jun 20	Jun 19	\$ Diff	% Change
17,738,184	21,601,405	(3,863,221)	(17.9%)	17,738,184	21,551,854	(3,813,670)	(17.7%)
YTD FY20	YTD Proj	\$ Diff	% Change	YTD FY20	YTD FY19	\$ Diff	% Change
253,456,228	262,266,708	(8,810,480)	(3.4%)	253,456,228	256,268,426	(2,812,197)	(1.1%)

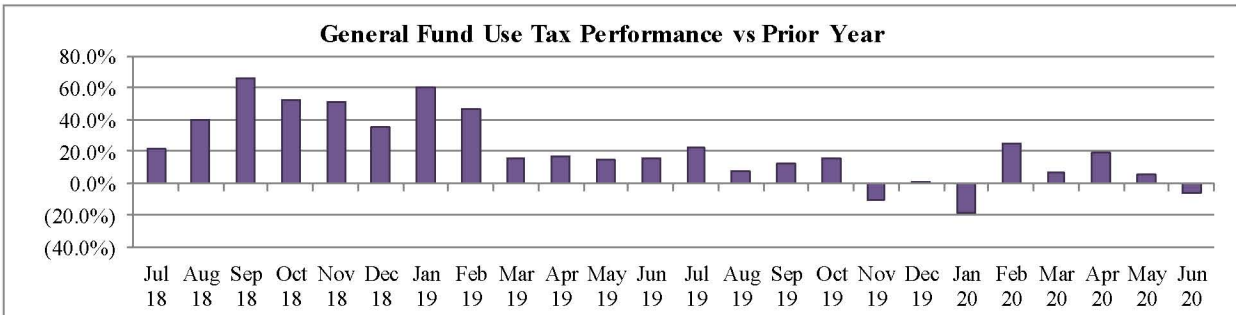
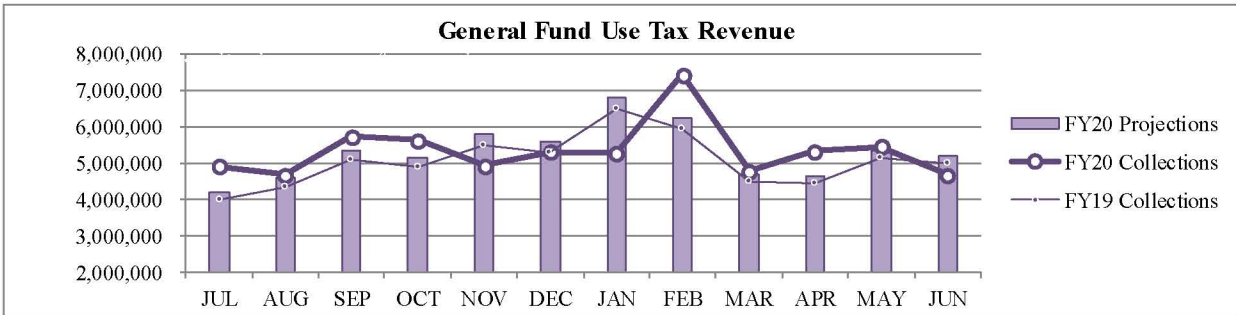


Sales Tax Comparison to Other Cities



General Fund Use Tax

USE TAX PERFORMANCE (vs Projection)				USE TAX PERFORMANCE (vs Prior Year)			
Jun 20	Projection	\$ Diff	% Change	Jun 20	Jun 19	\$ Diff	% Change
4,681,770	5,185,817	(504,047)	(9.7%)	4,681,770	4,983,825	(302,056)	(6.1%)
YTD FY20	YTD Proj	\$ Diff	% Change	YTD FY20	YTD FY19	\$ Diff	% Change
64,525,815	63,492,414	1,033,401	1.6%	64,525,815	60,466,886	4,058,929	6.7%



Staff is available should you have questions or require additional information.

Craig Freeman
City Manager