



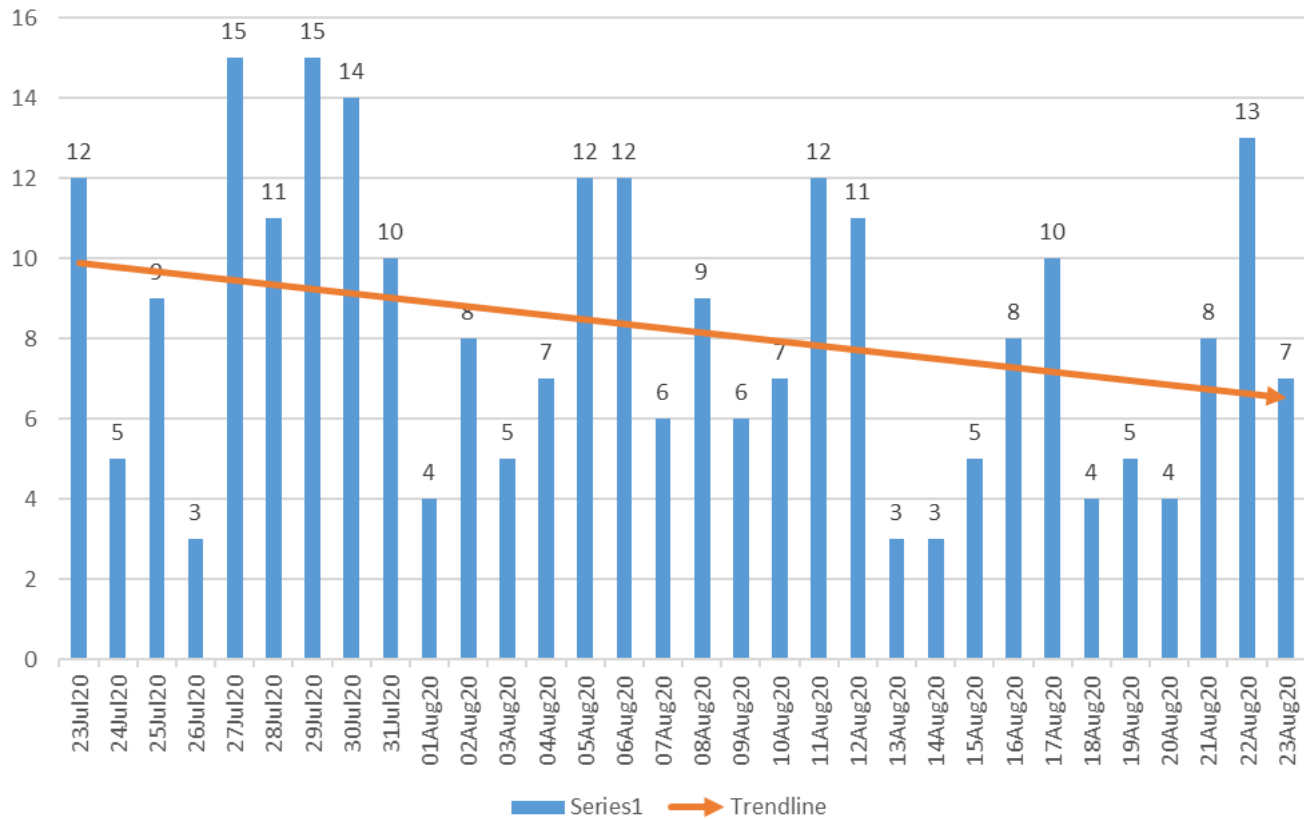
**30 Day COVID-19 Trends
for Oklahoma City-Metropolitan Area
July 23-August 23, 2020**

**Cumulative Case Counts and Deaths for Oklahoma County, Oklahoma, and the United States
As of August 24, 2020**

	Confirmed Cases	Deaths
Oklahoma County	12,651	144
Oklahoma	53,522	730
United States	5,701,679	176,802

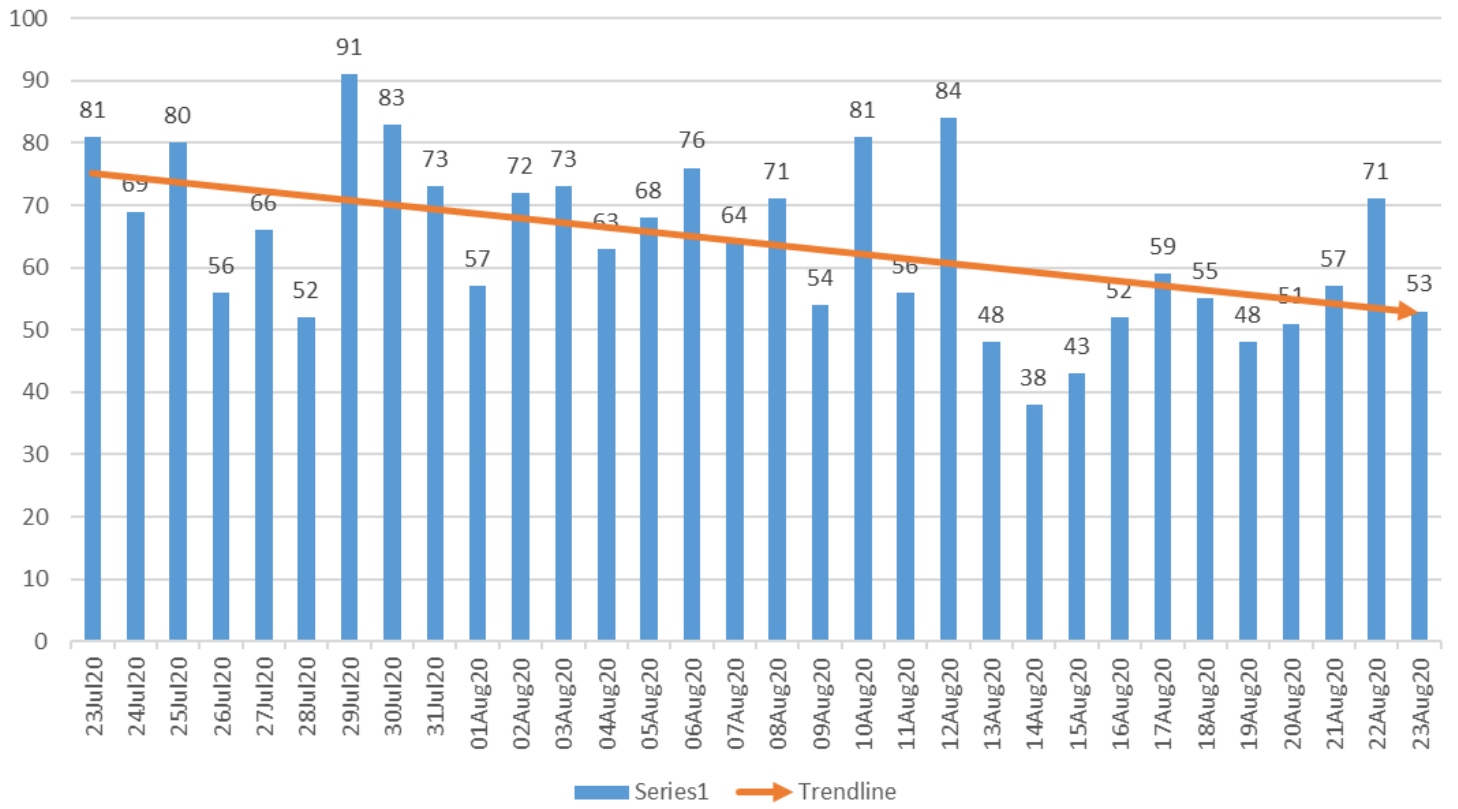


Oklahoma County Syndromic Surveillance of Influenza-like Illness(ILI) ED Visits July 23-Aug 23, 2020



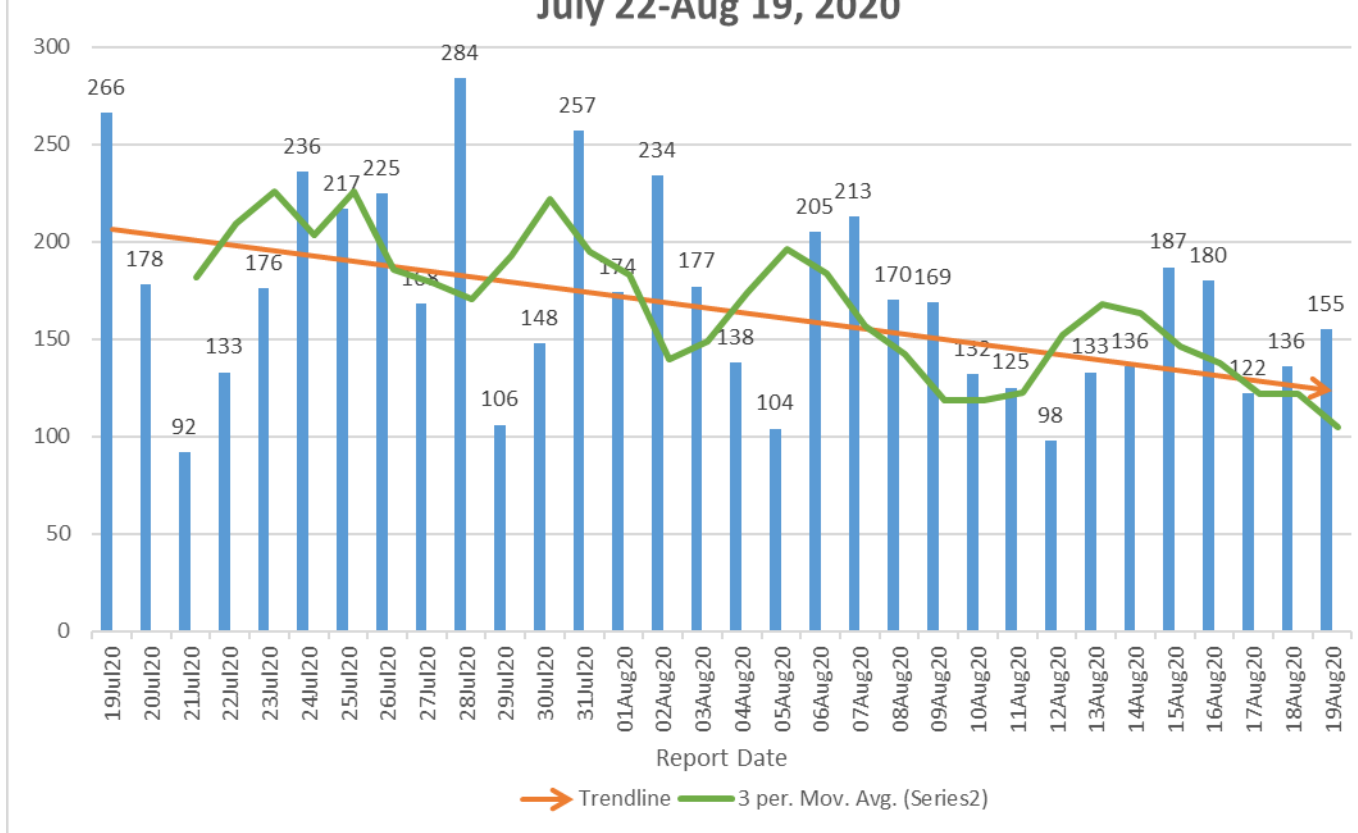


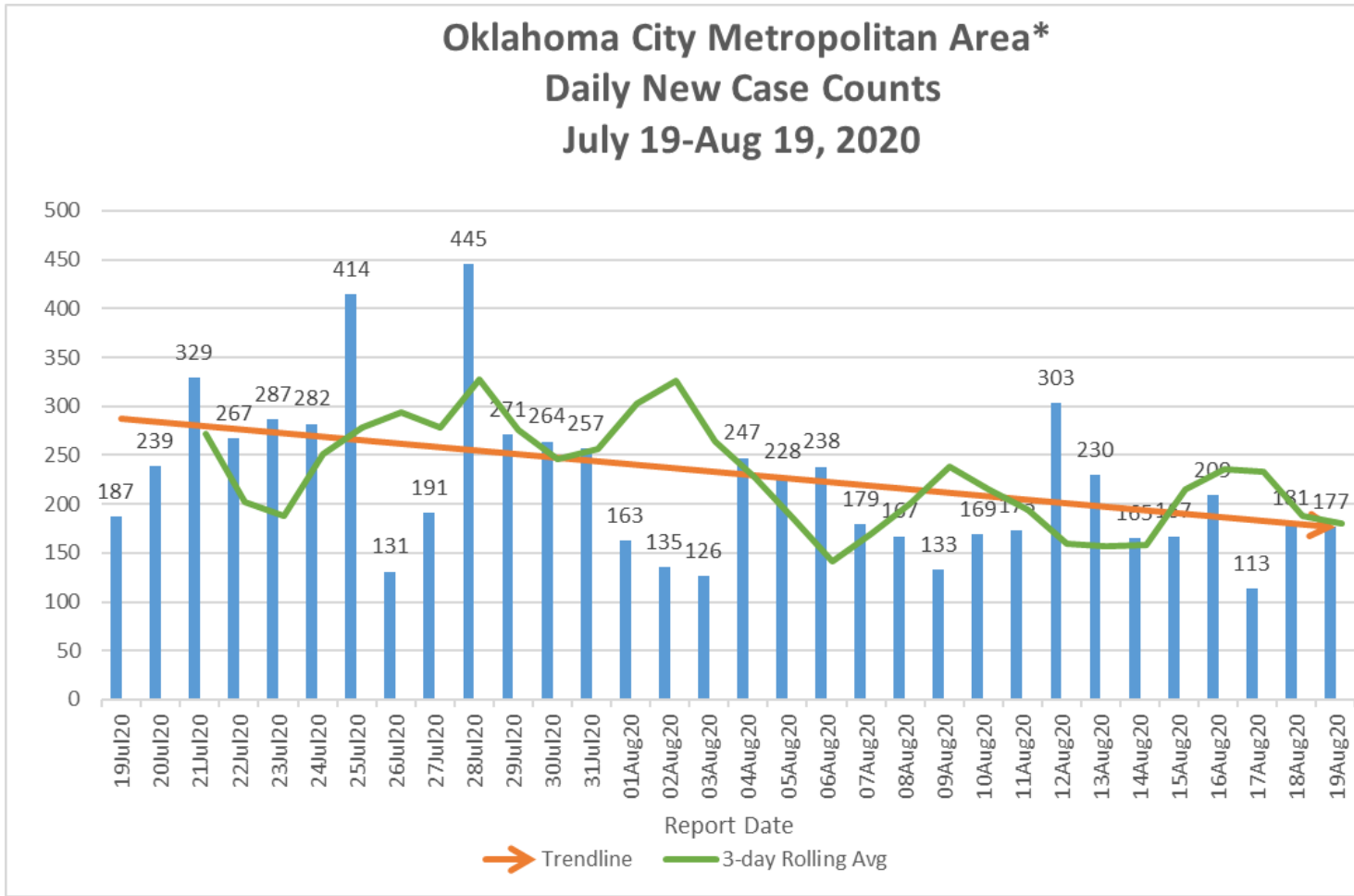
Oklahoma County Syndromic Surveillance of COVID-19 related ED Visits July 23-Aug 23, 2020





Oklahoma County Daily New Case Counts July 22-Aug 19, 2020

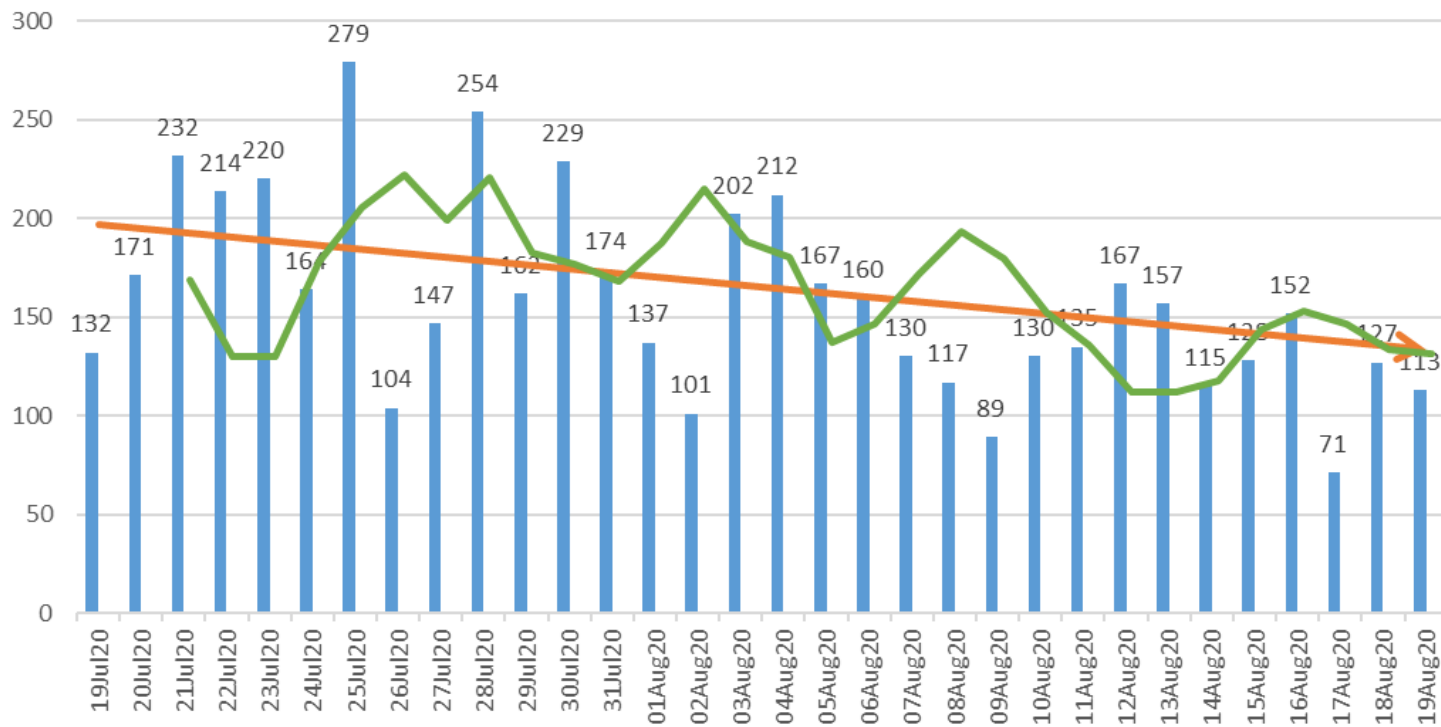




*Includes daily new cases from Oklahoma, Cleveland, and Canadian Counties.



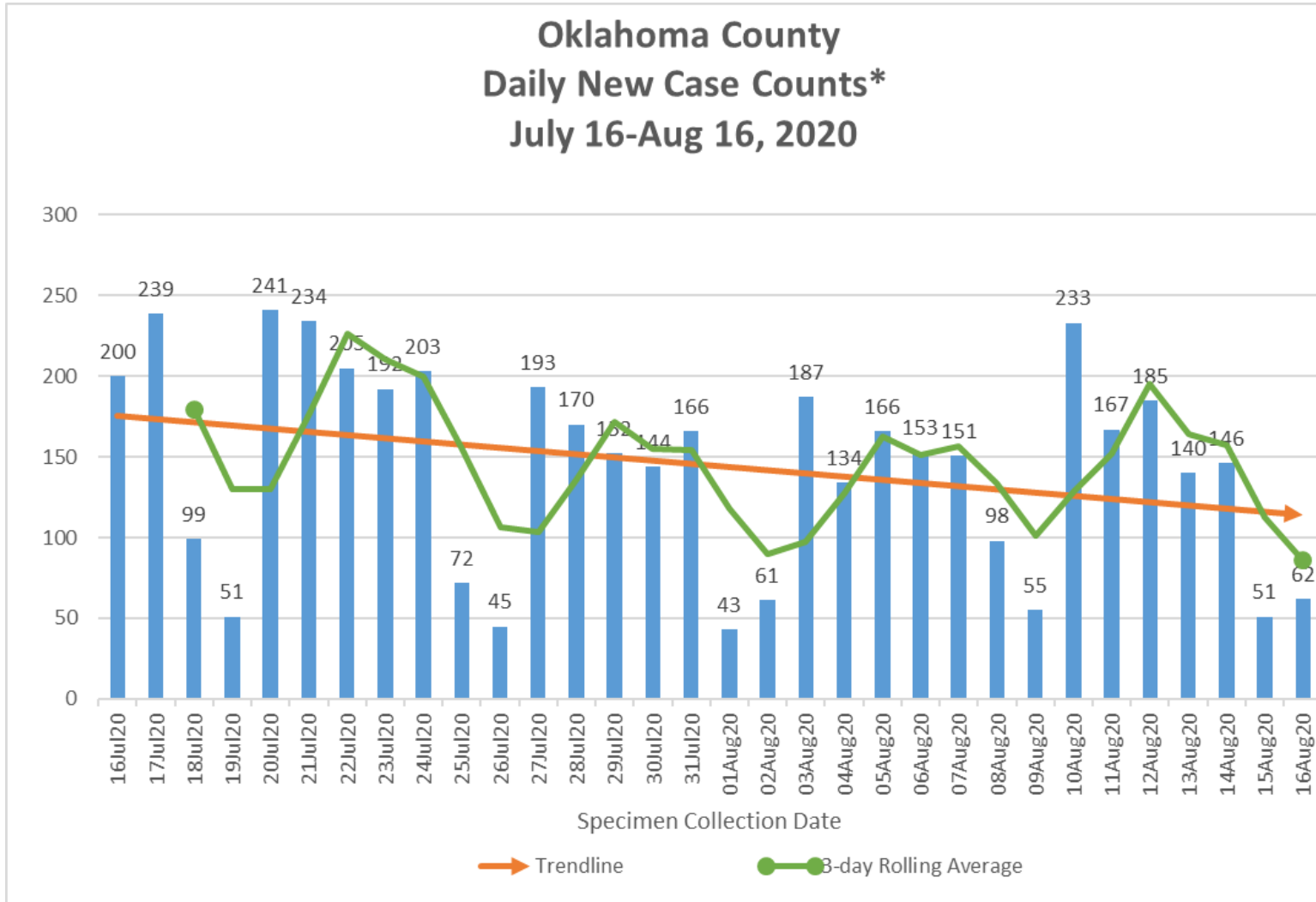
Oklahoma County Daily New Case Counts (excludes LTC cases) July 19-Aug 19, 2020



Report Date
→ Trendline — 3 Day Rolling Avg



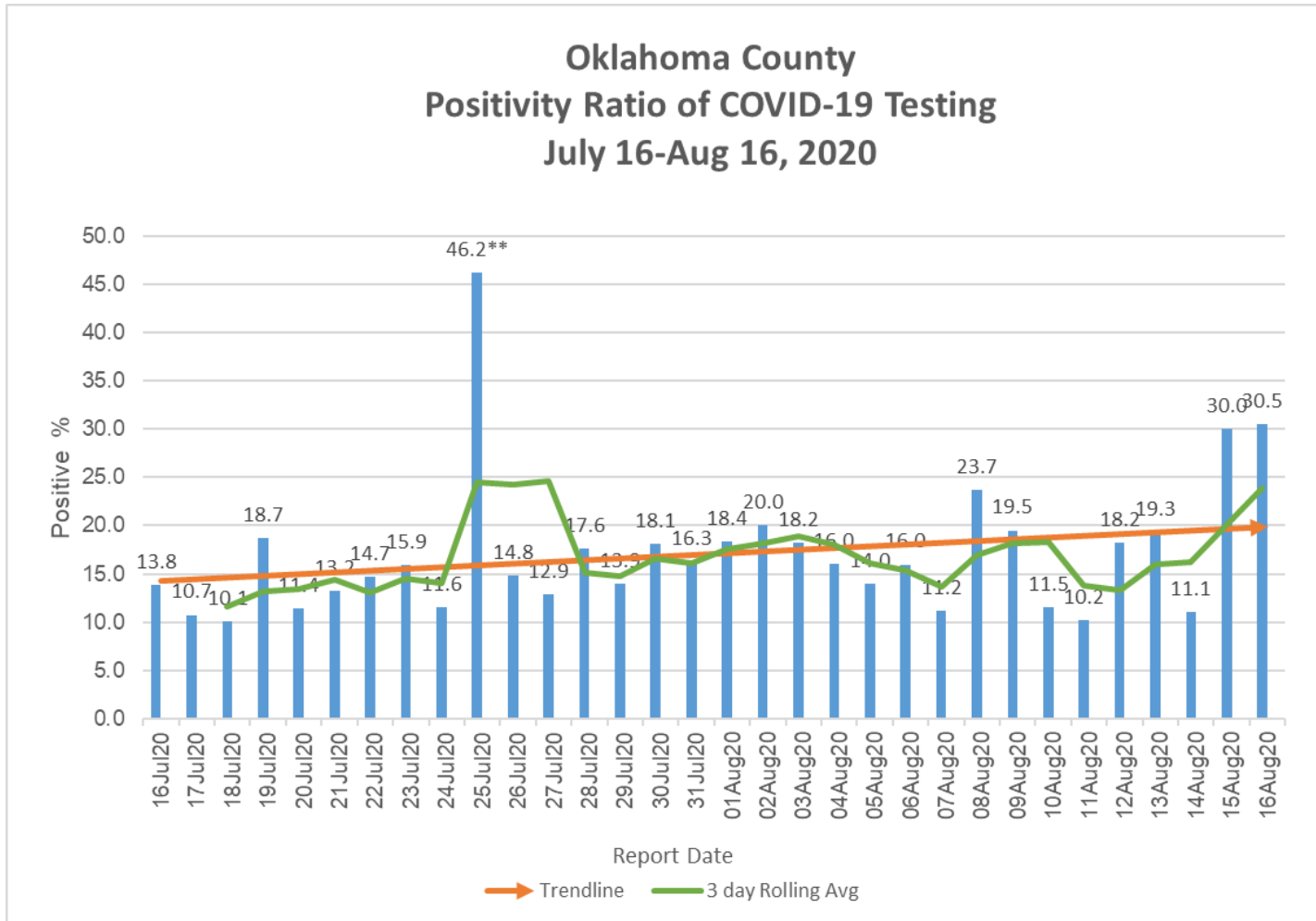
Oklahoma County Daily New Case Counts* July 16-Aug 16, 2020



*Case Counts by Specimen Collection Date



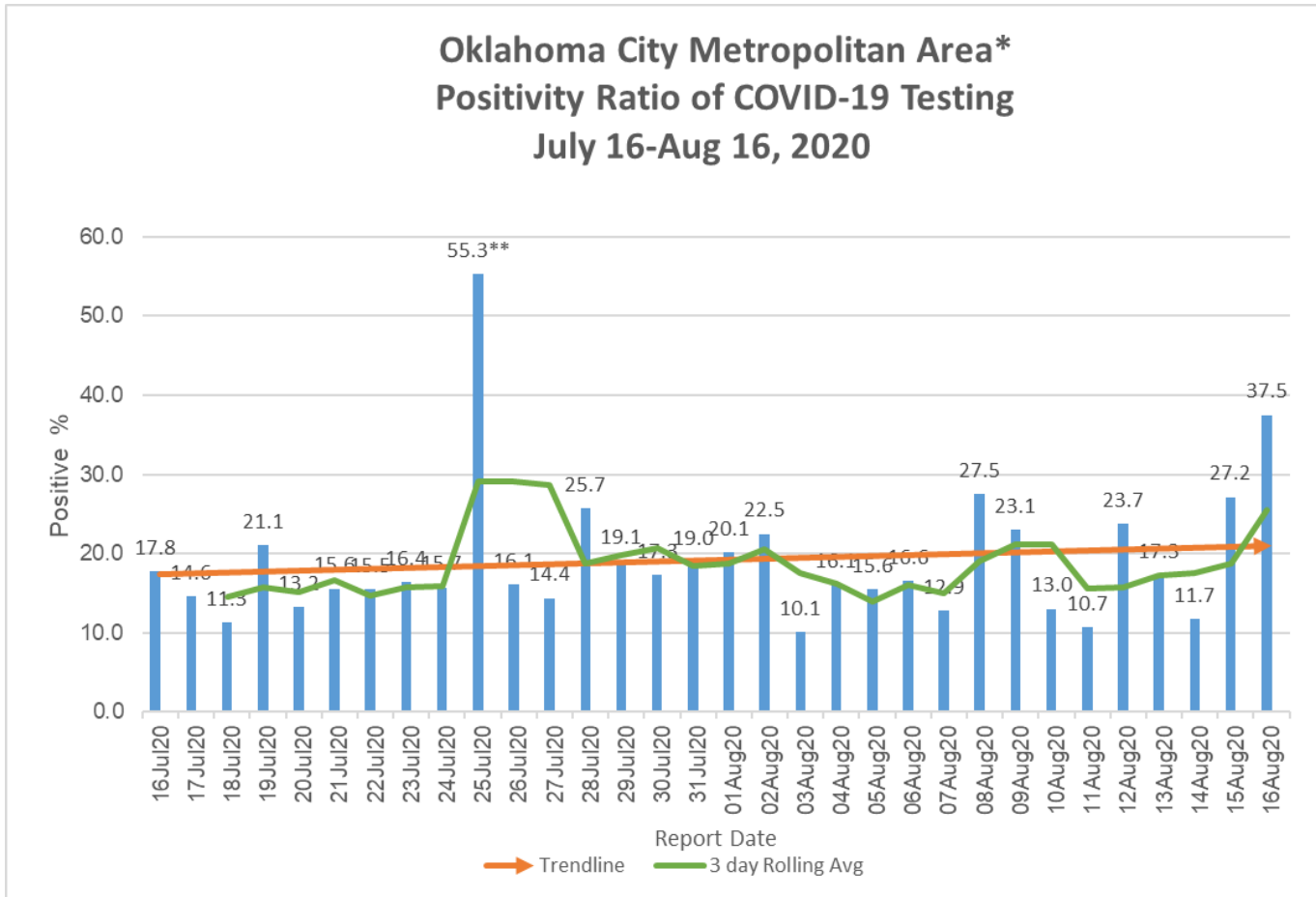
Oklahoma County Positivity Ratio of COVID-19 Testing July 16-Aug 16, 2020



**Outliers attributed to low number of total tests performed.



Oklahoma City Metropolitan Area* Positivity Ratio of COVID-19 Testing July 16-Aug 16, 2020

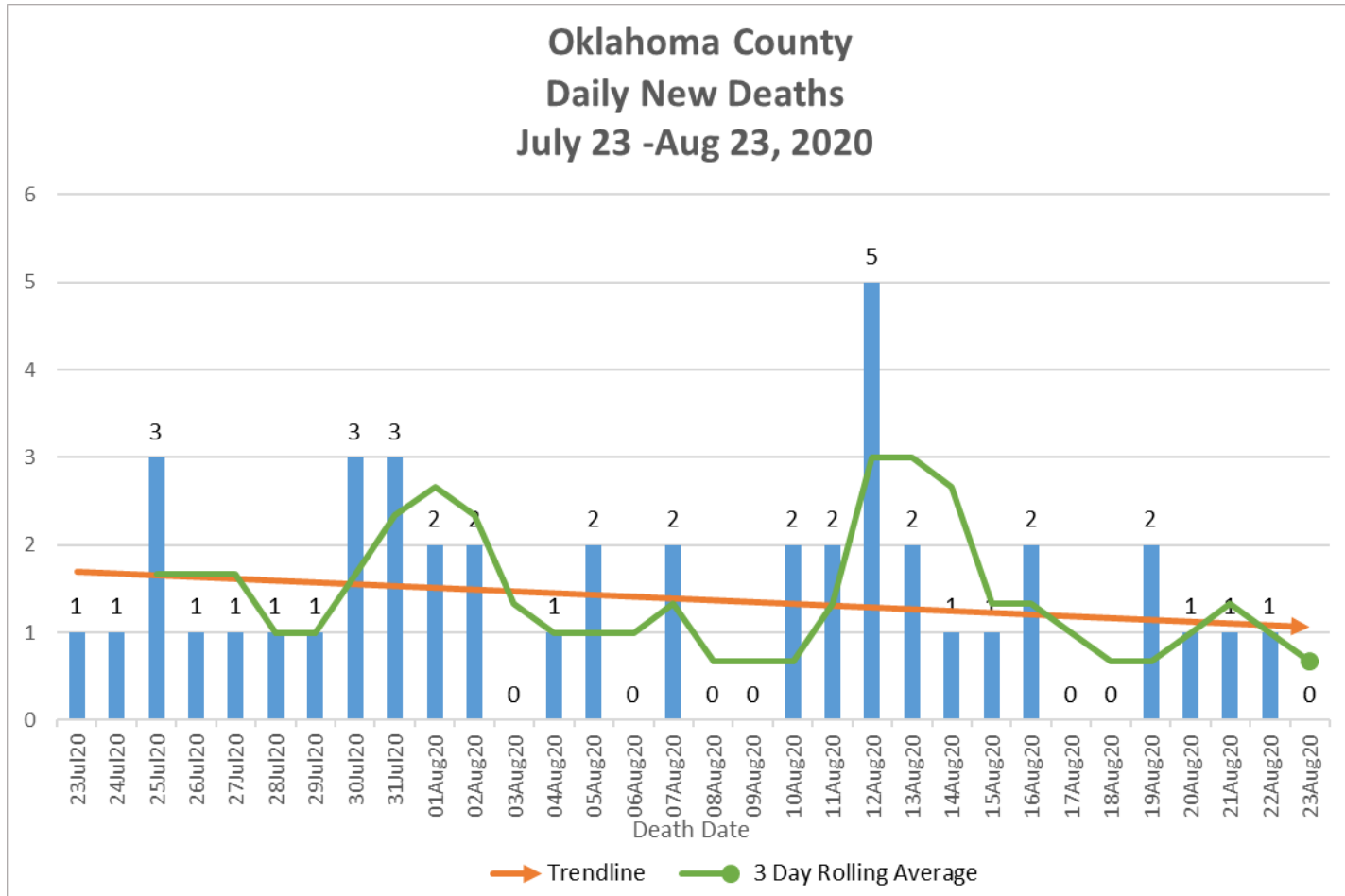


*Includes daily new positive results from Oklahoma, Cleveland, and Canadian Counties.

**Outliers attributed to low number of total tests performed.

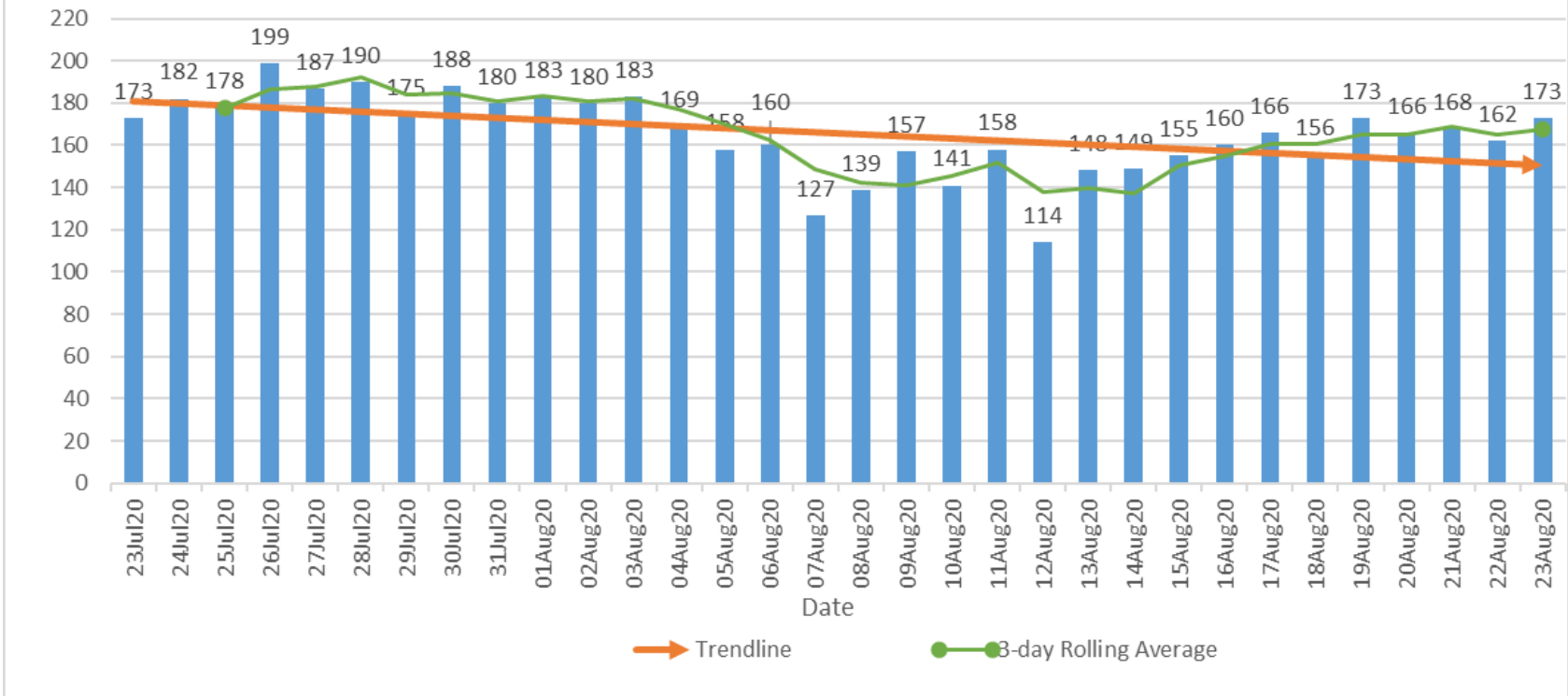


Oklahoma County Daily New Deaths July 23 -Aug 23, 2020





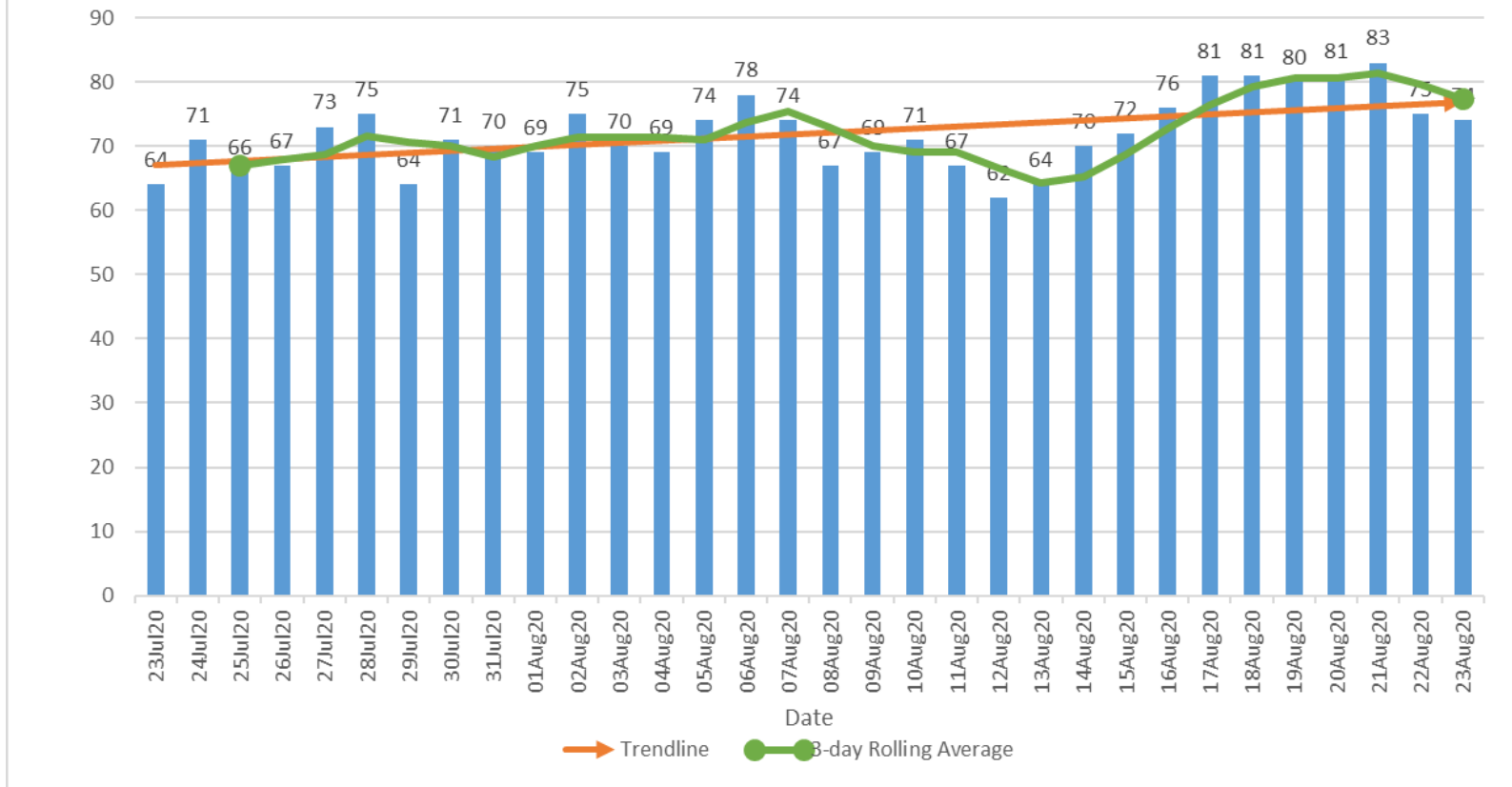
Oklahoma County Daily Current Hospitalizations July 23-Aug 23, 2020



*Includes all COVID-19 hospitalizations in Oklahoma County Hospitals.



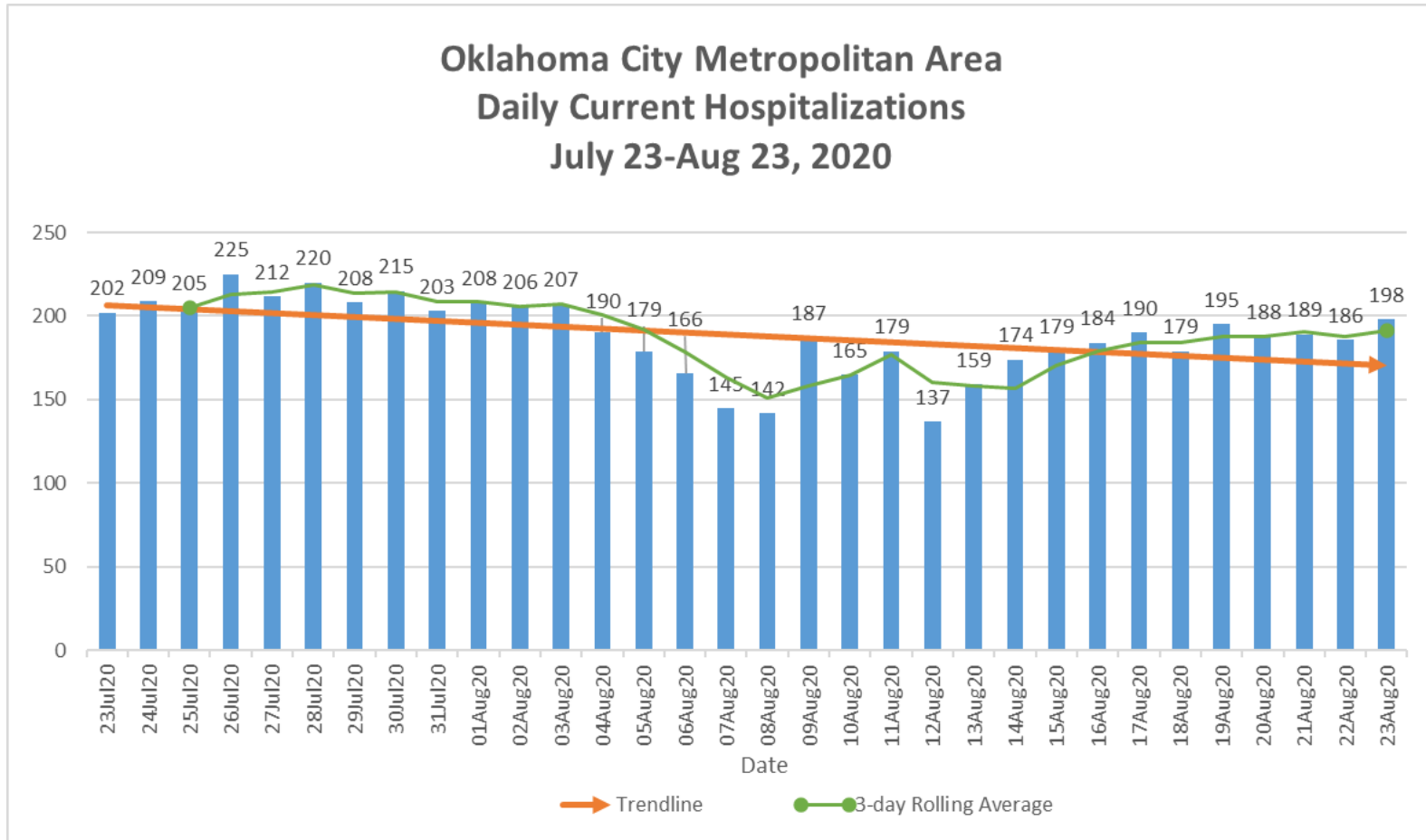
Oklahoma County Daily Current ICU Hospitalizations July 23-Aug 23, 2020



*Includes all COVID-19 ICU hospitalizations in Oklahoma County Hospitals.



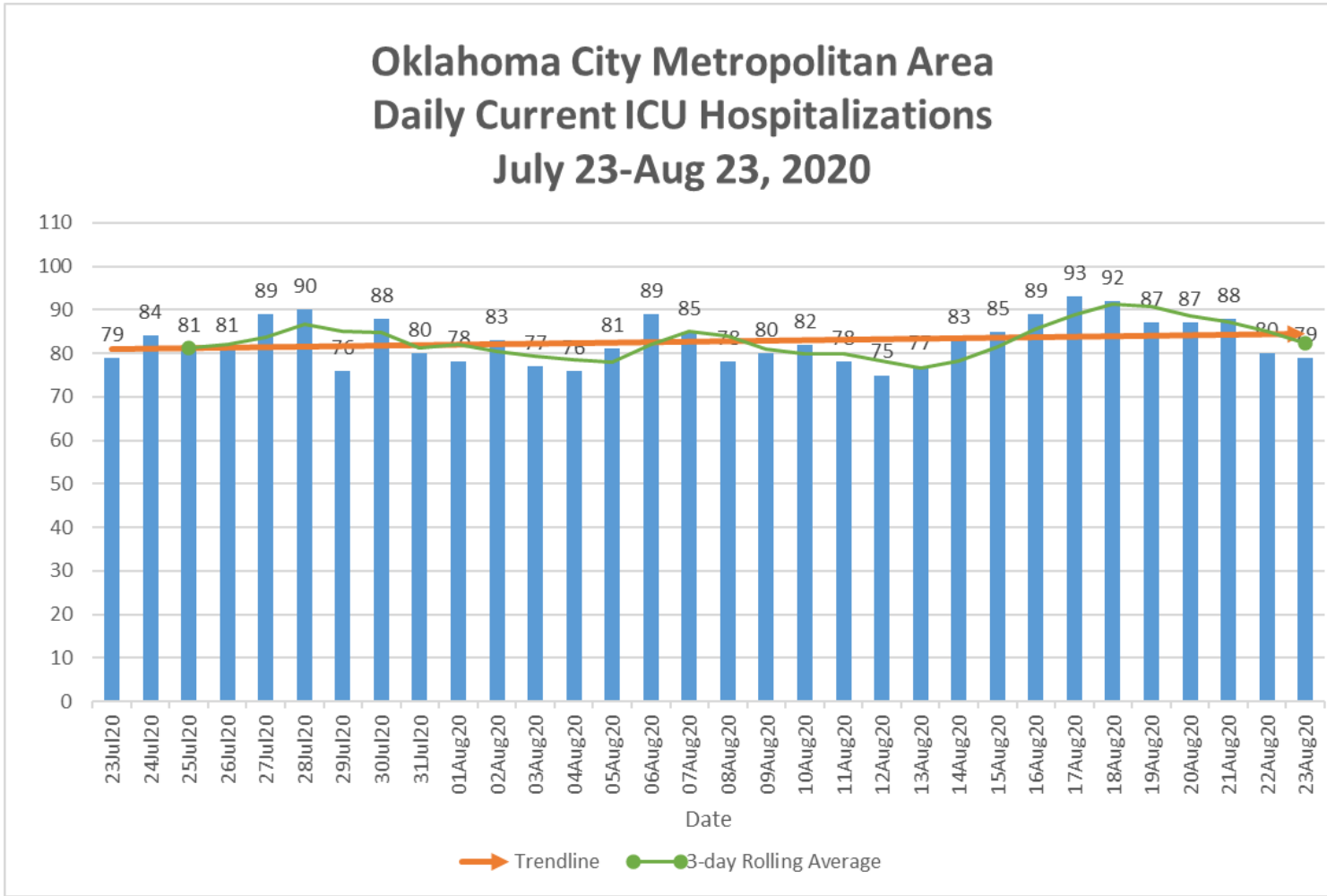
Oklahoma City Metropolitan Area Daily Current Hospitalizations July 23-Aug 23, 2020



*Includes all COVID-19 hospitalizations in Oklahoma, Cleveland and Canadian County hospitals.



Oklahoma City Metropolitan Area Daily Current ICU Hospitalizations July 23-Aug 23, 2020



*Includes all COVID-19 ICU hospitalizations in Oklahoma, Cleveland and Canadian County hospitals.