



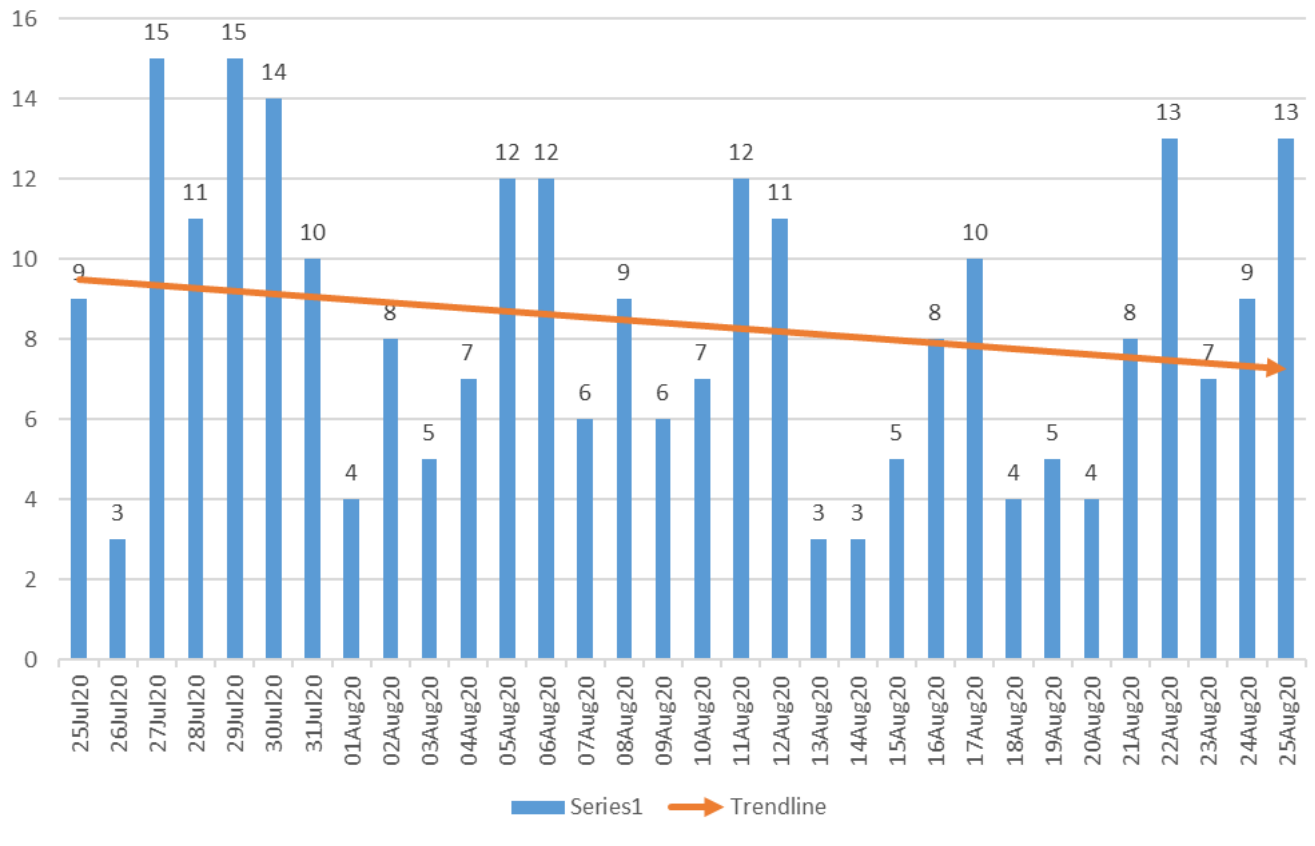
**30 Day COVID-19 Trends
for Oklahoma City-Metropolitan Area
July 25-August 25, 2020**

**Cumulative Case Counts and Deaths for Oklahoma County, Oklahoma, and the United States
As of August 26, 2020**

| | Confirmed Cases | Deaths |
|-----------------|------------------------|---------------|
| Oklahoma County | 12,870 | 148 |
| Oklahoma | 54,838 | 763 |
| United States | 5,777,710 | 178,486 |

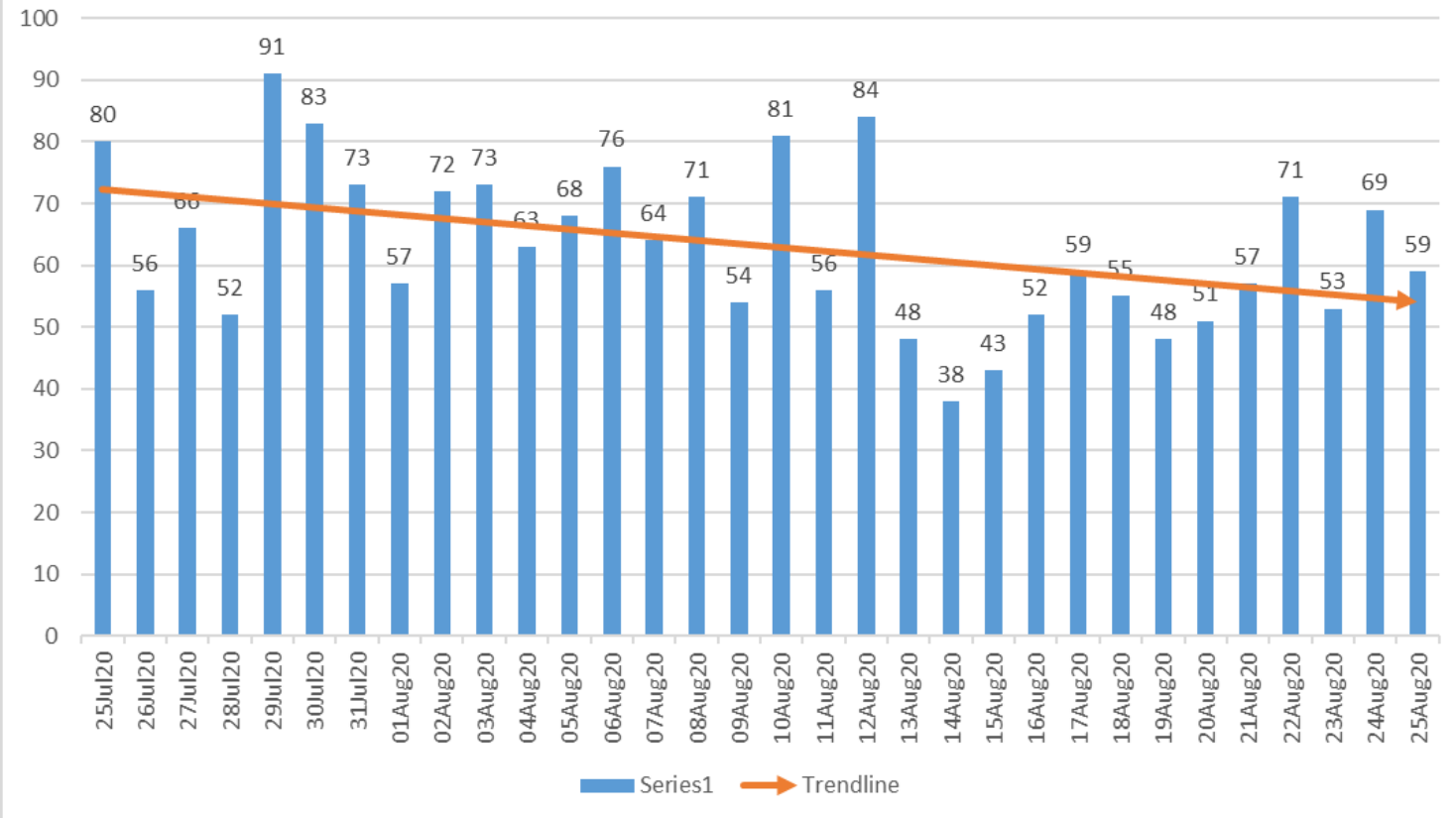


Oklahoma County Syndromic Surveillance of Influenza-like Illness(ILI) ED Visits July 25-Aug 25, 2020



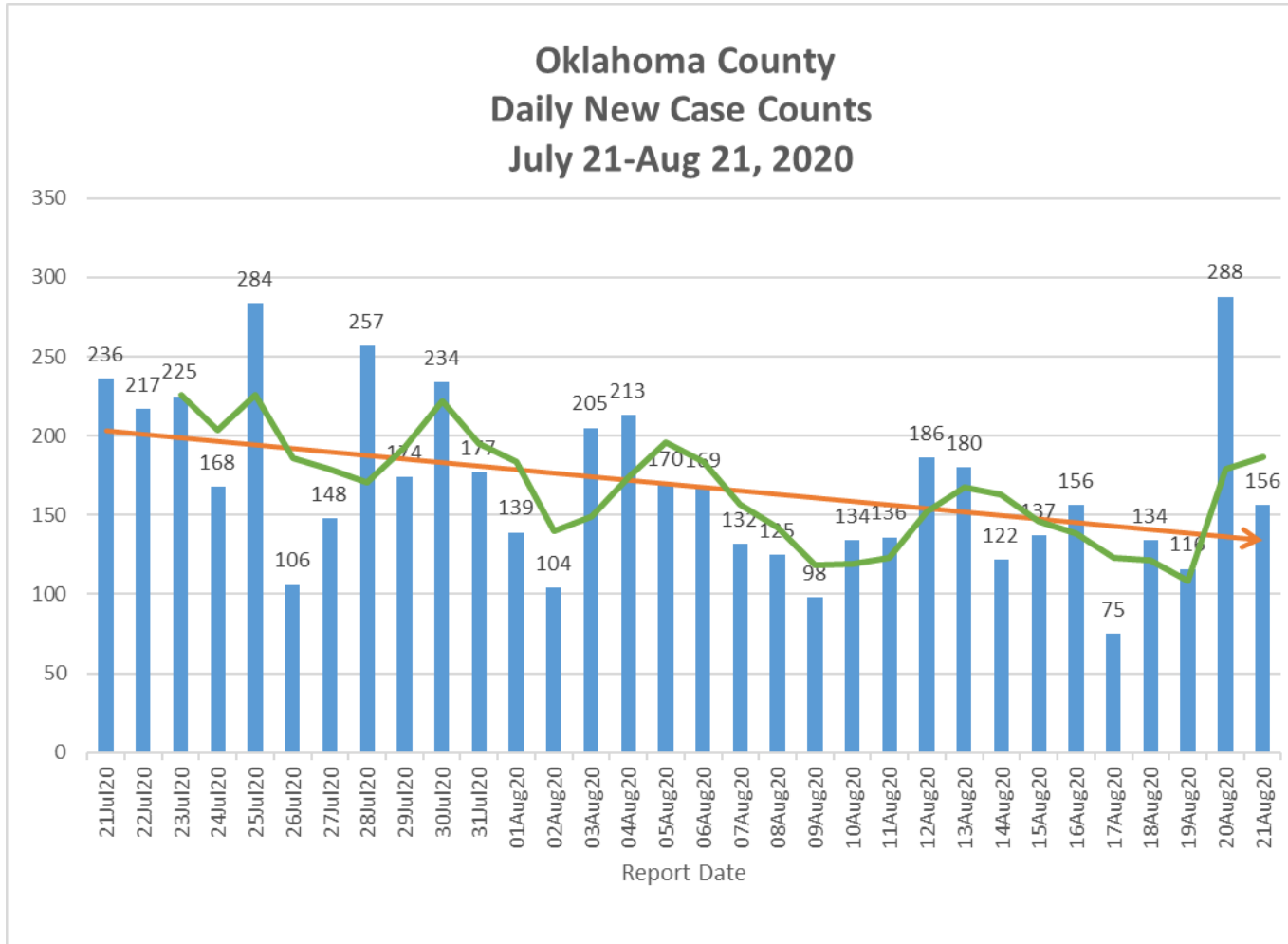


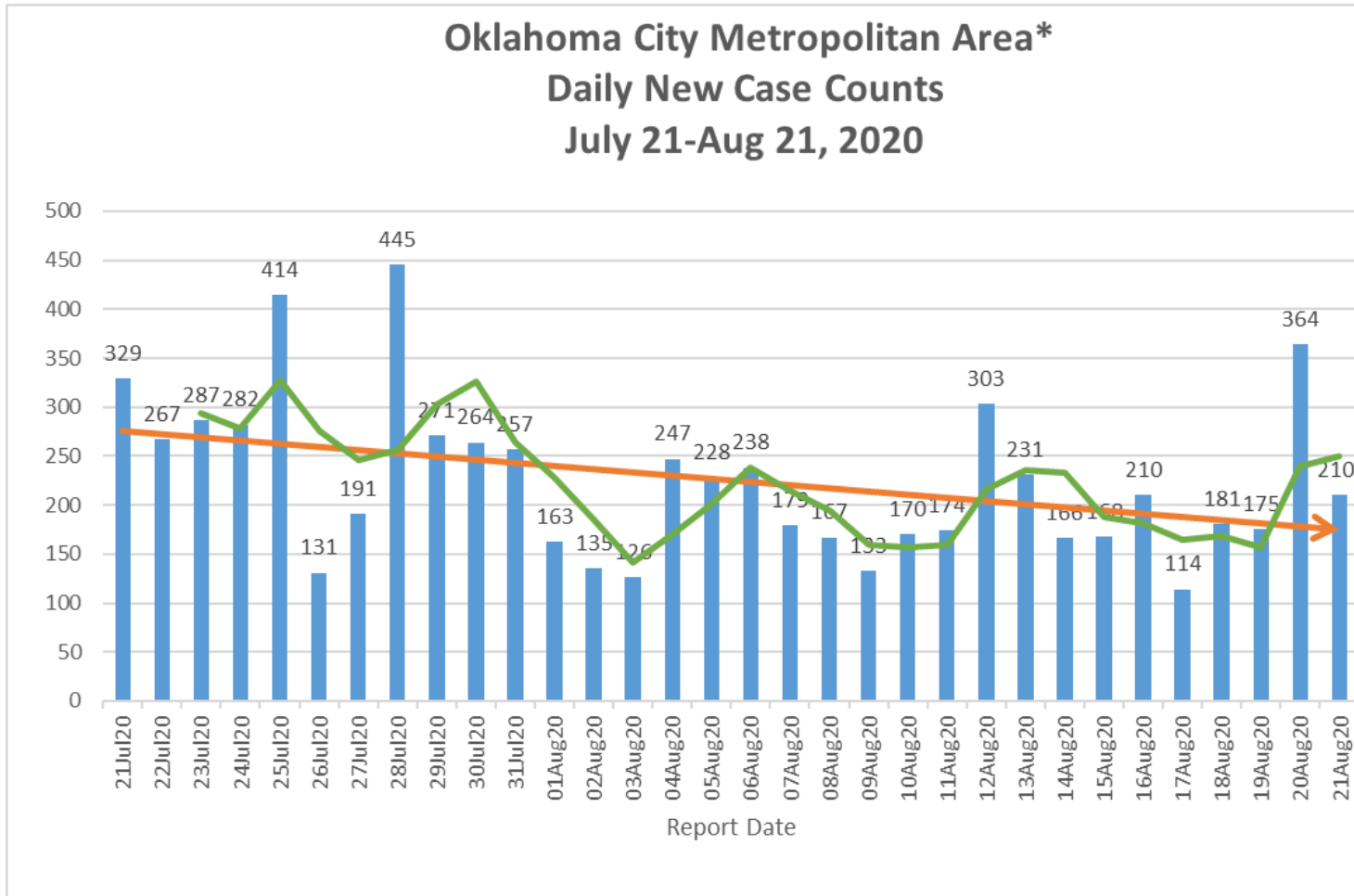
Oklahoma County Syndromic Surveillance of COVID-19 related ED Visits July 25-Aug 25, 2020





Oklahoma County Daily New Case Counts July 21-Aug 21, 2020

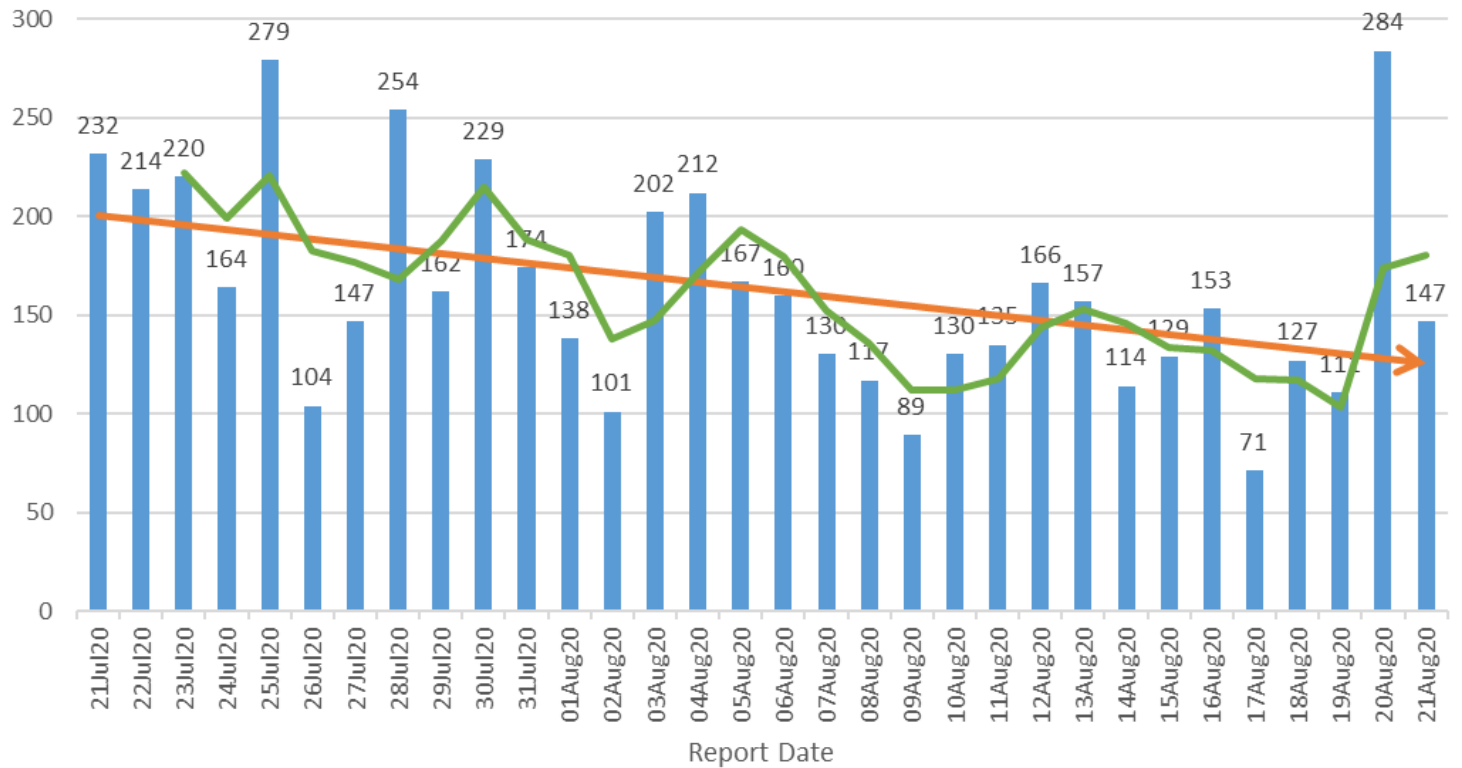




*Includes daily new cases from Oklahoma, Cleveland, and Canadian Counties.

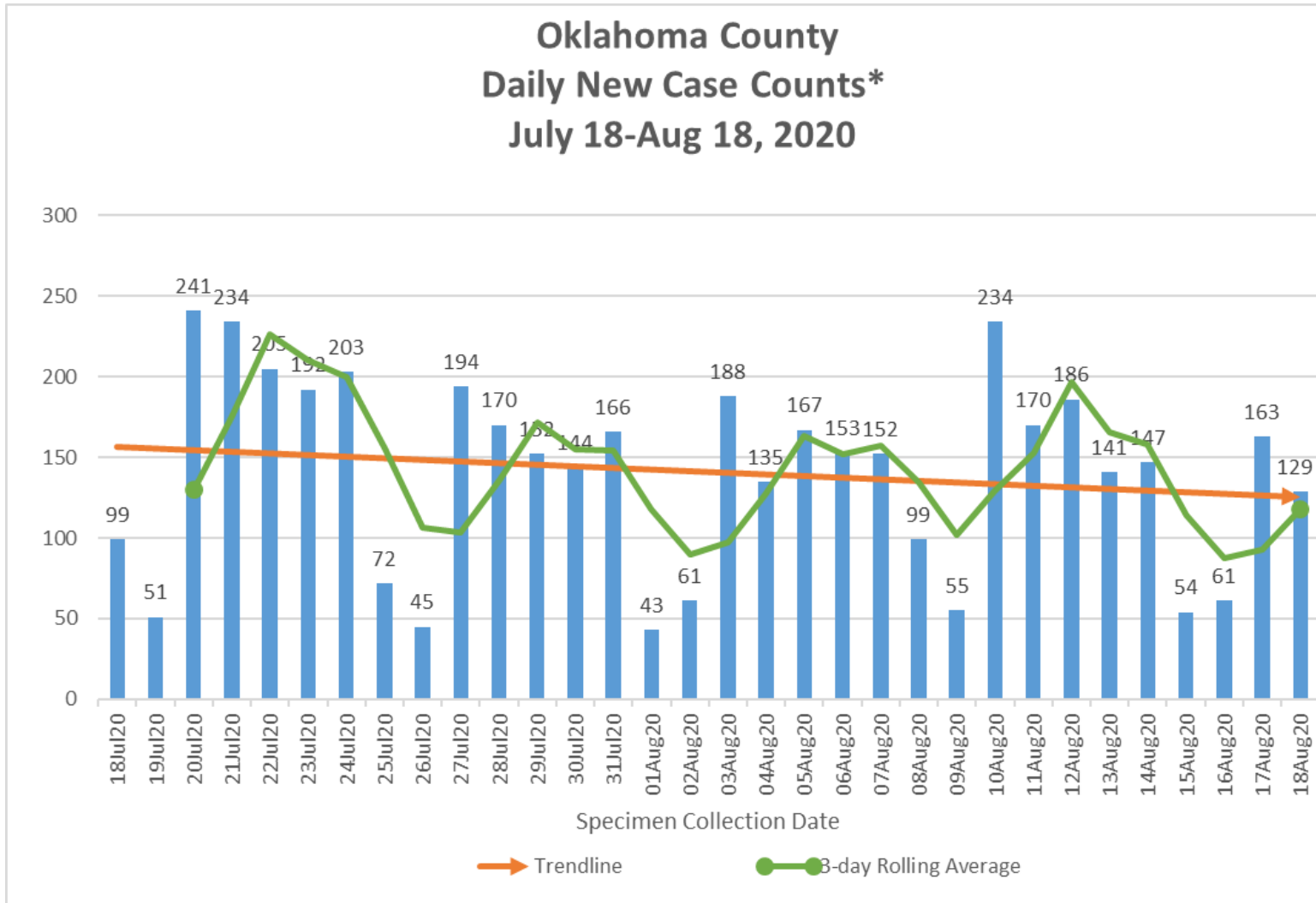


Oklahoma County Daily New Case Counts (excludes LTC cases) July 21-Aug 21, 2020





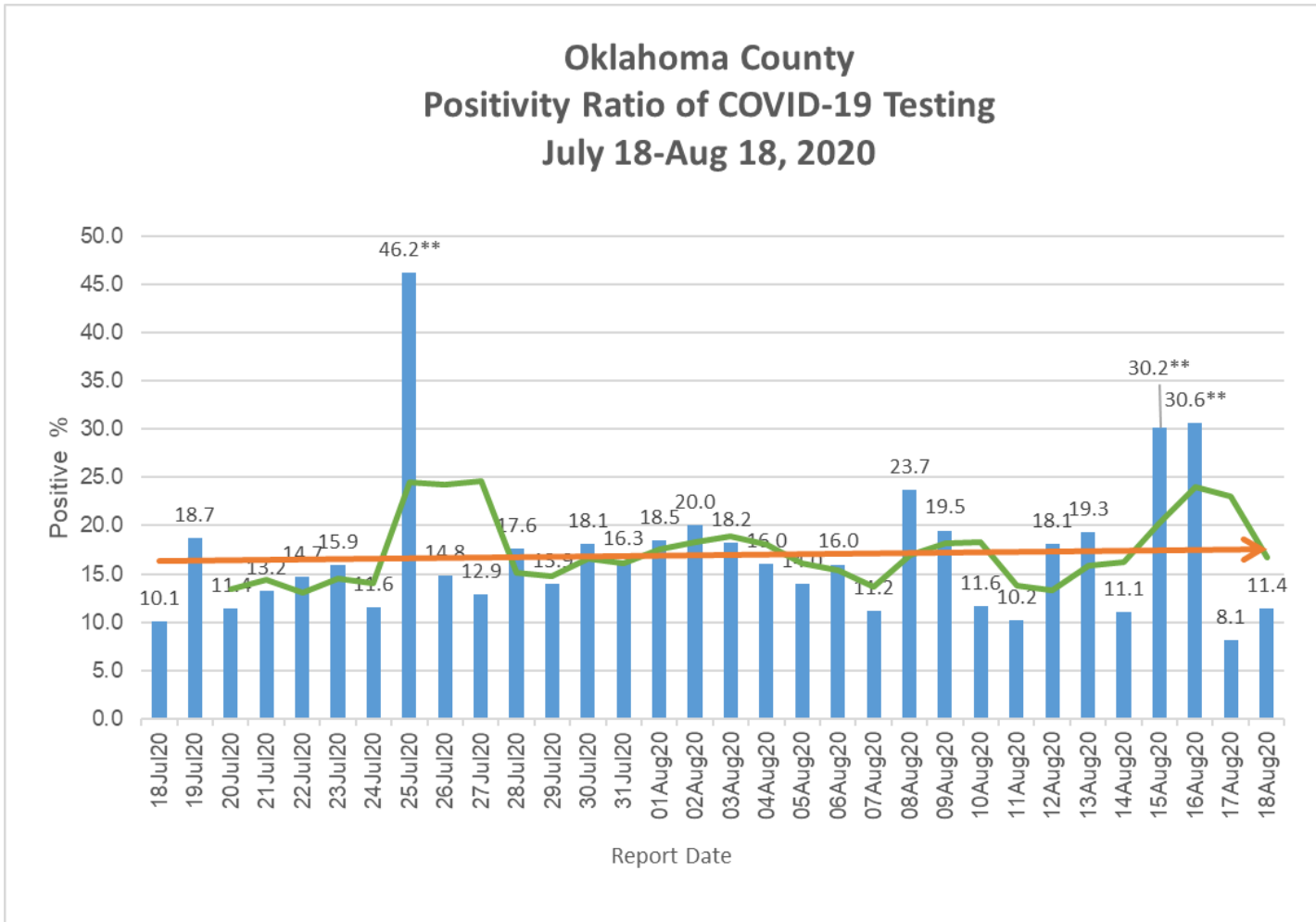
Oklahoma County Daily New Case Counts* July 18-Aug 18, 2020



*Case Counts by Specimen Collection Date



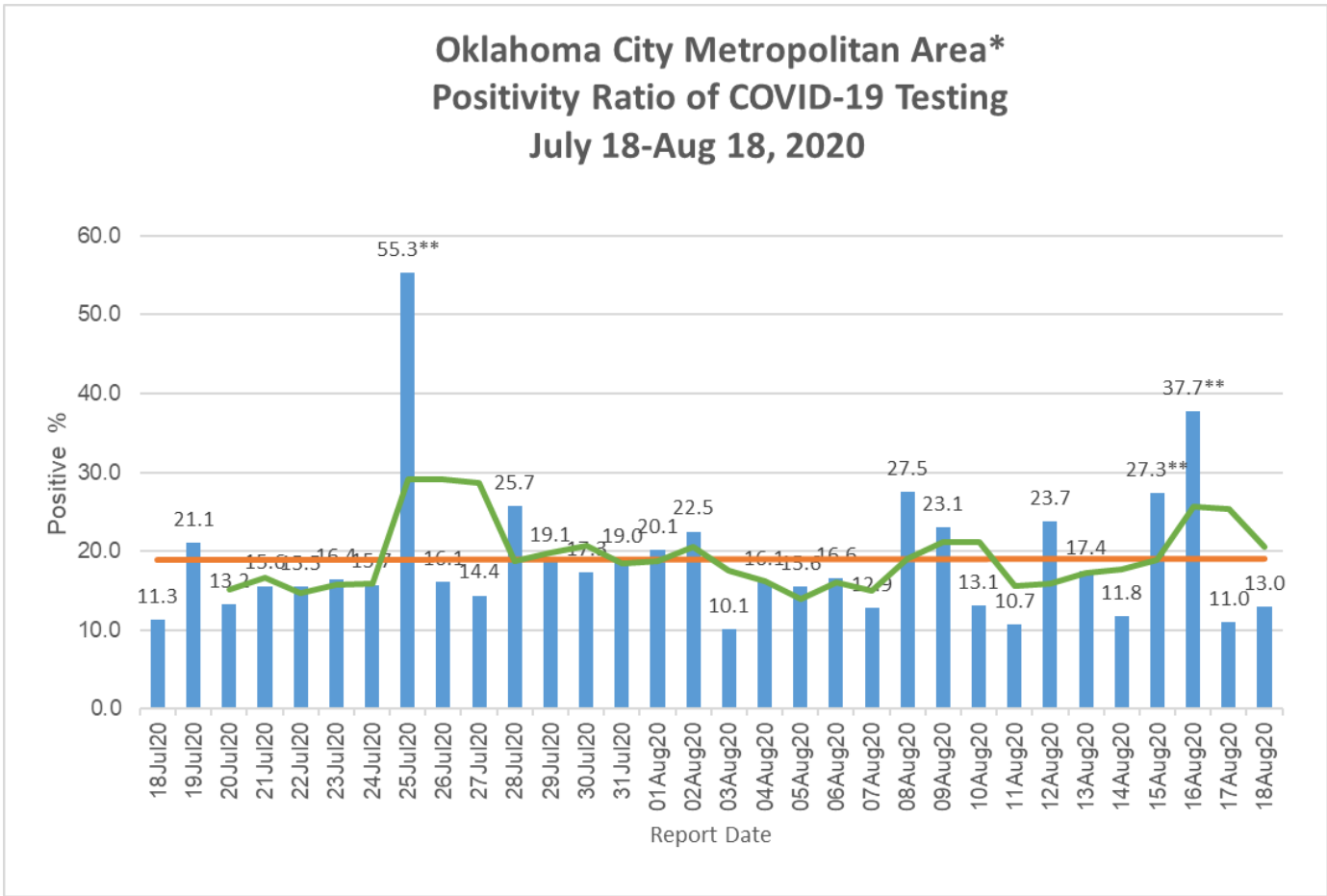
Oklahoma County Positivity Ratio of COVID-19 Testing July 18-Aug 18, 2020



**Outliers attributed to low number of total tests performed.



Oklahoma City Metropolitan Area* Positivity Ratio of COVID-19 Testing July 18-Aug 18, 2020

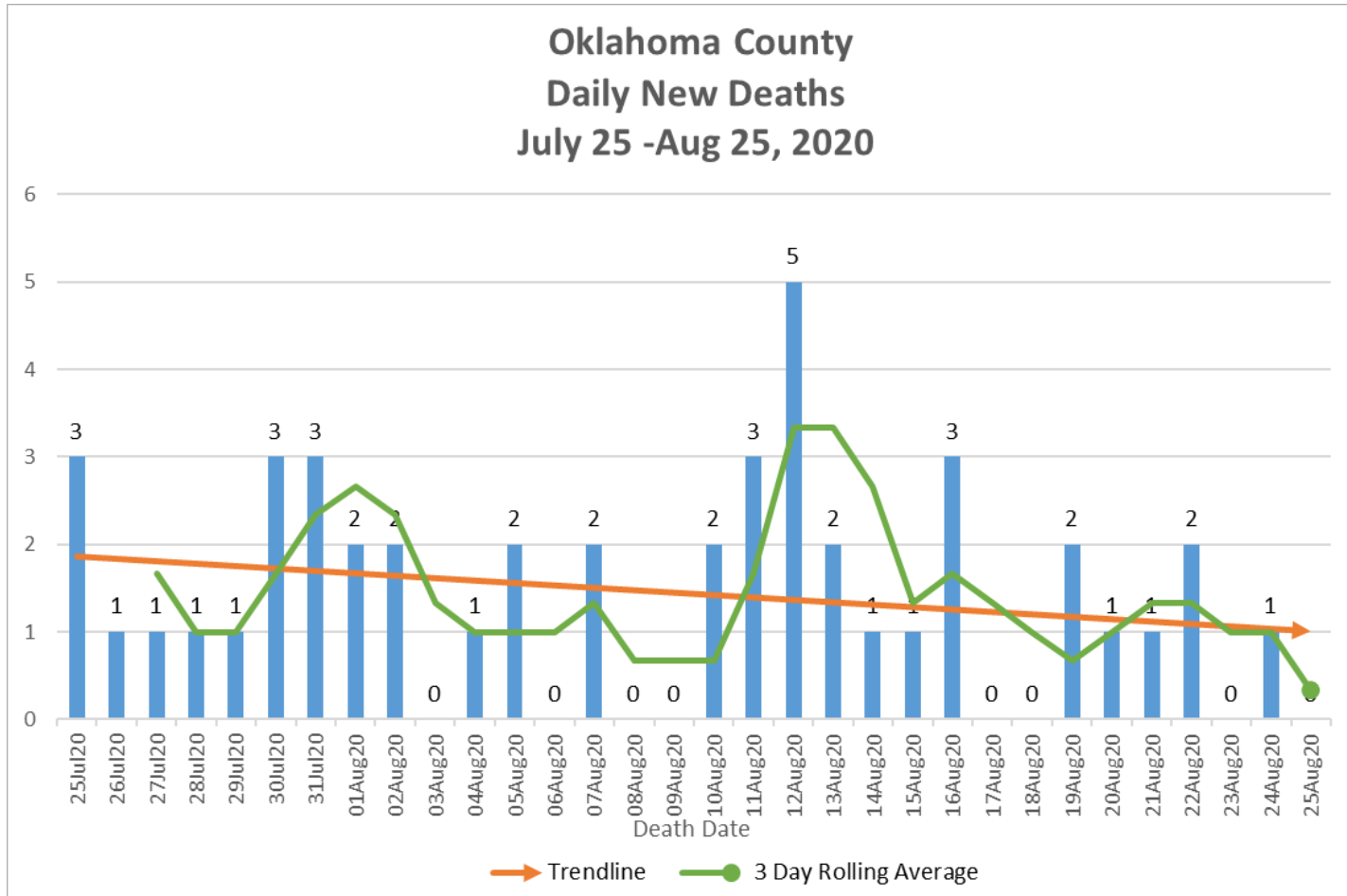


*Includes daily new positive results from Oklahoma, Cleveland, and Canadian Counties.

**Outliers attributed to low number of total tests performed.

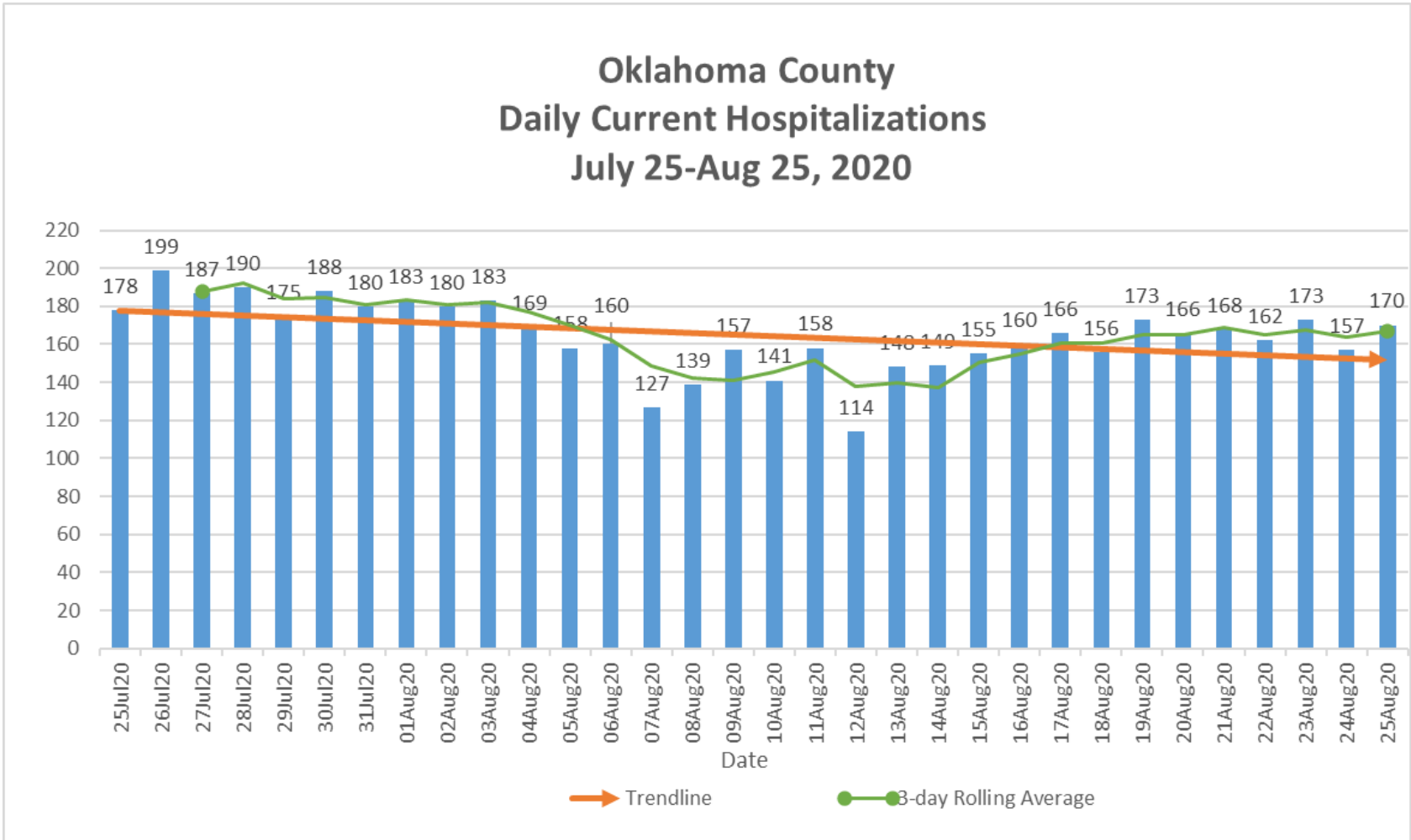


Oklahoma County Daily New Deaths July 25 -Aug 25, 2020





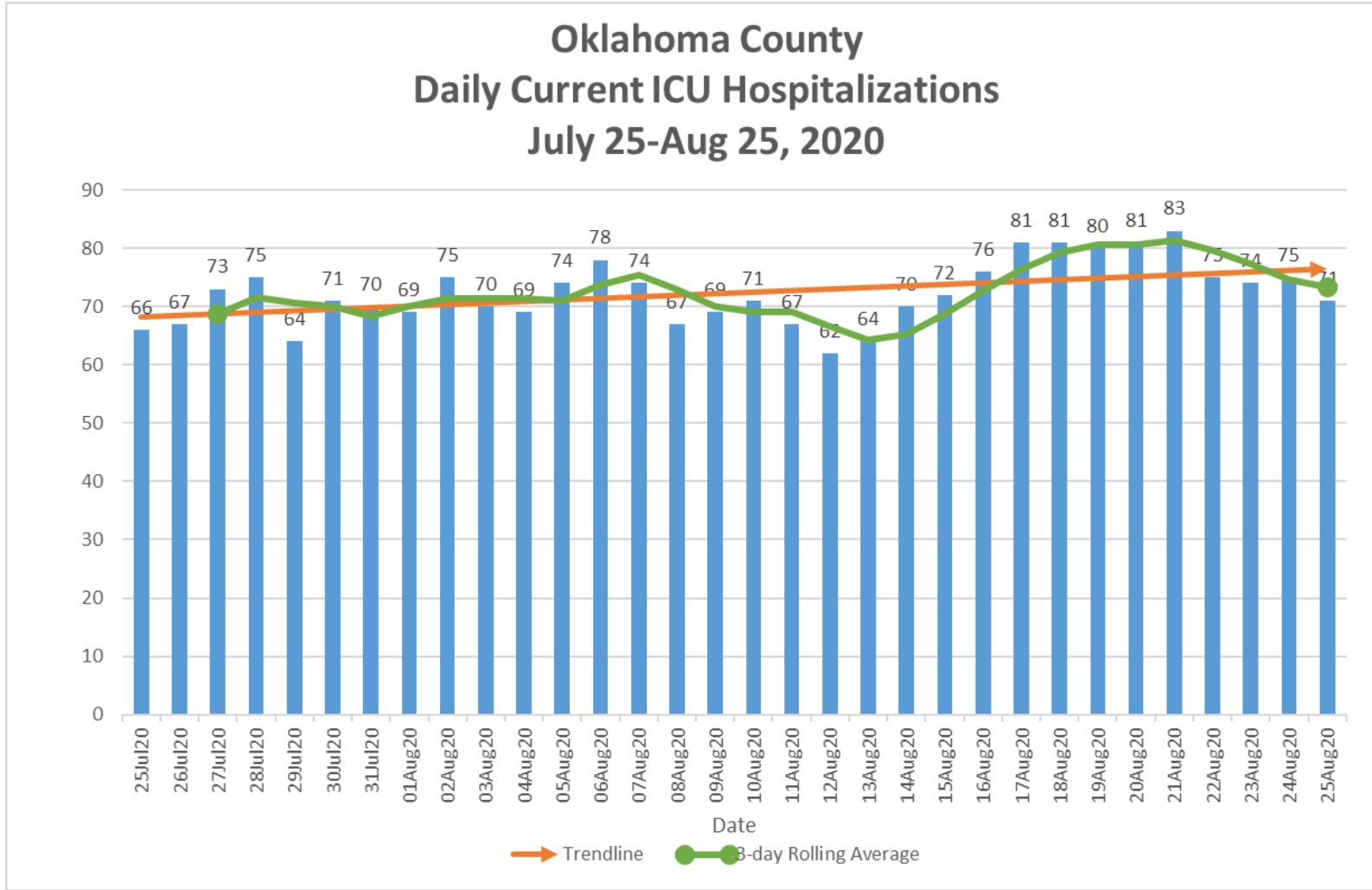
Oklahoma County Daily Current Hospitalizations July 25-Aug 25, 2020



*Includes all COVID-19 hospitalizations in Oklahoma County Hospitals.



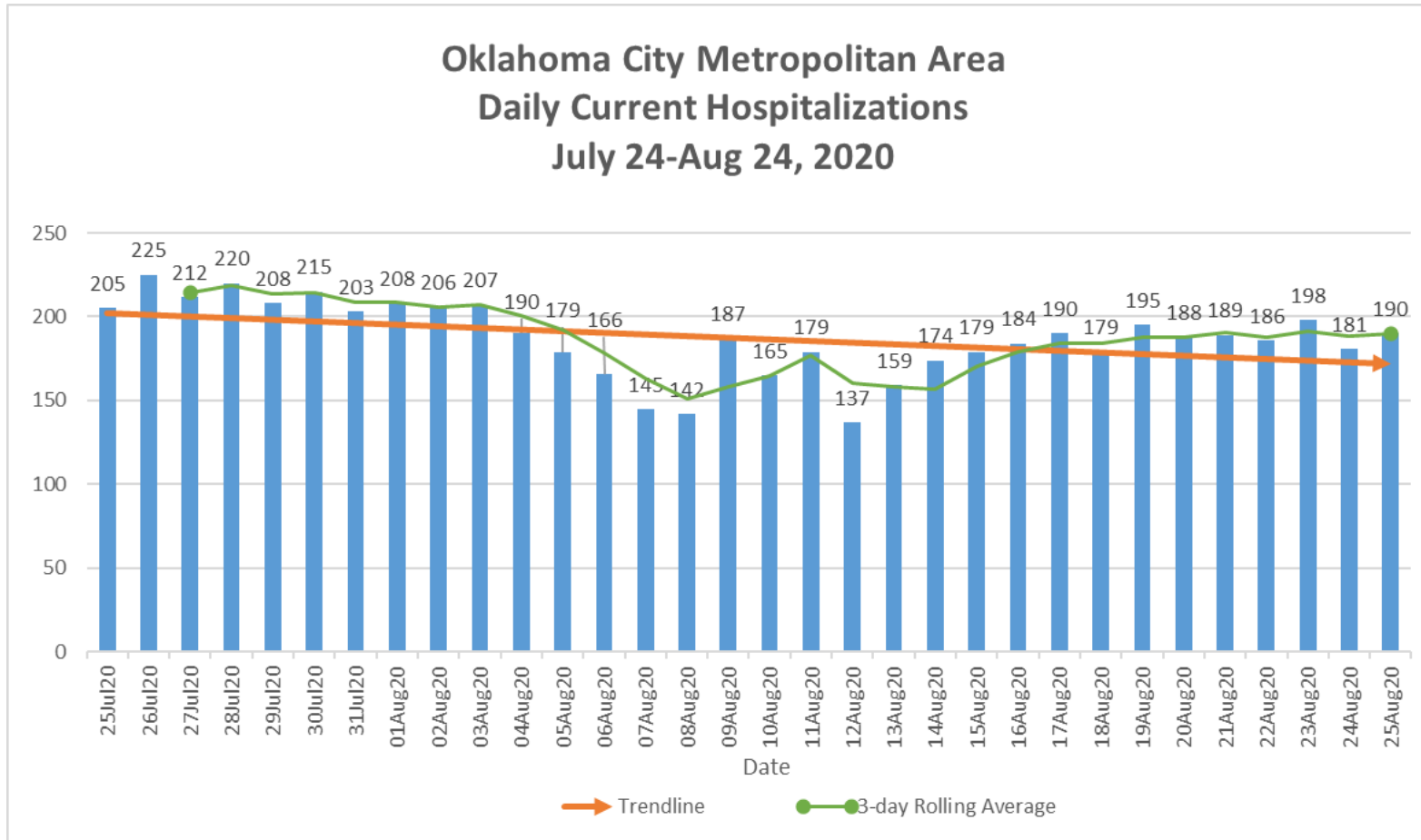
Oklahoma County Daily Current ICU Hospitalizations July 25-Aug 25, 2020



*Includes all COVID-19 ICU hospitalizations in Oklahoma County Hospitals.



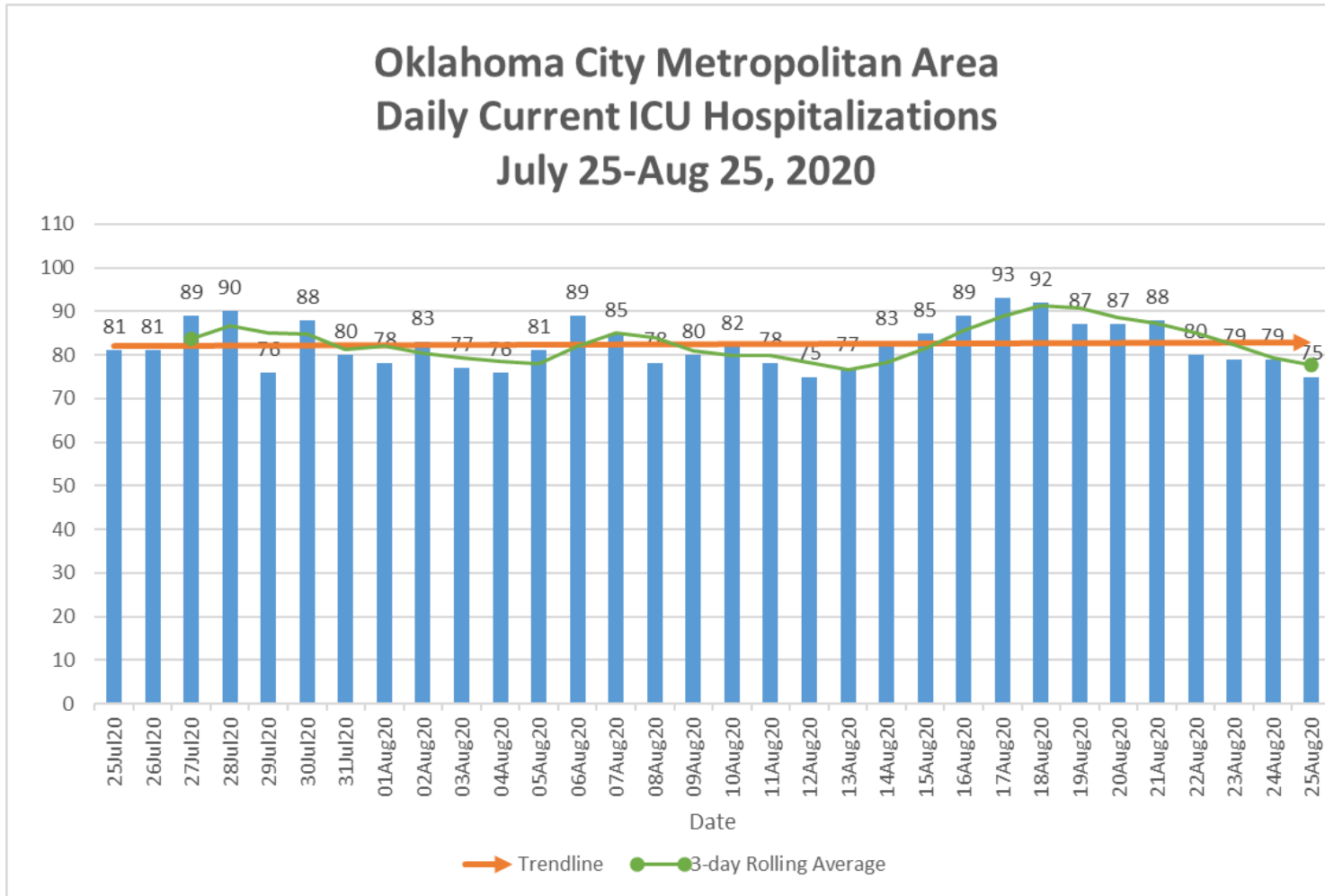
Oklahoma City Metropolitan Area Daily Current Hospitalizations July 24-Aug 24, 2020



*Includes all COVID-19 hospitalizations in Oklahoma, Cleveland and Canadian County hospitals.



Oklahoma City Metropolitan Area Daily Current ICU Hospitalizations July 25-Aug 25, 2020



*Includes all COVID-19 ICU hospitalizations in Oklahoma, Cleveland and Canadian County hospitals.