



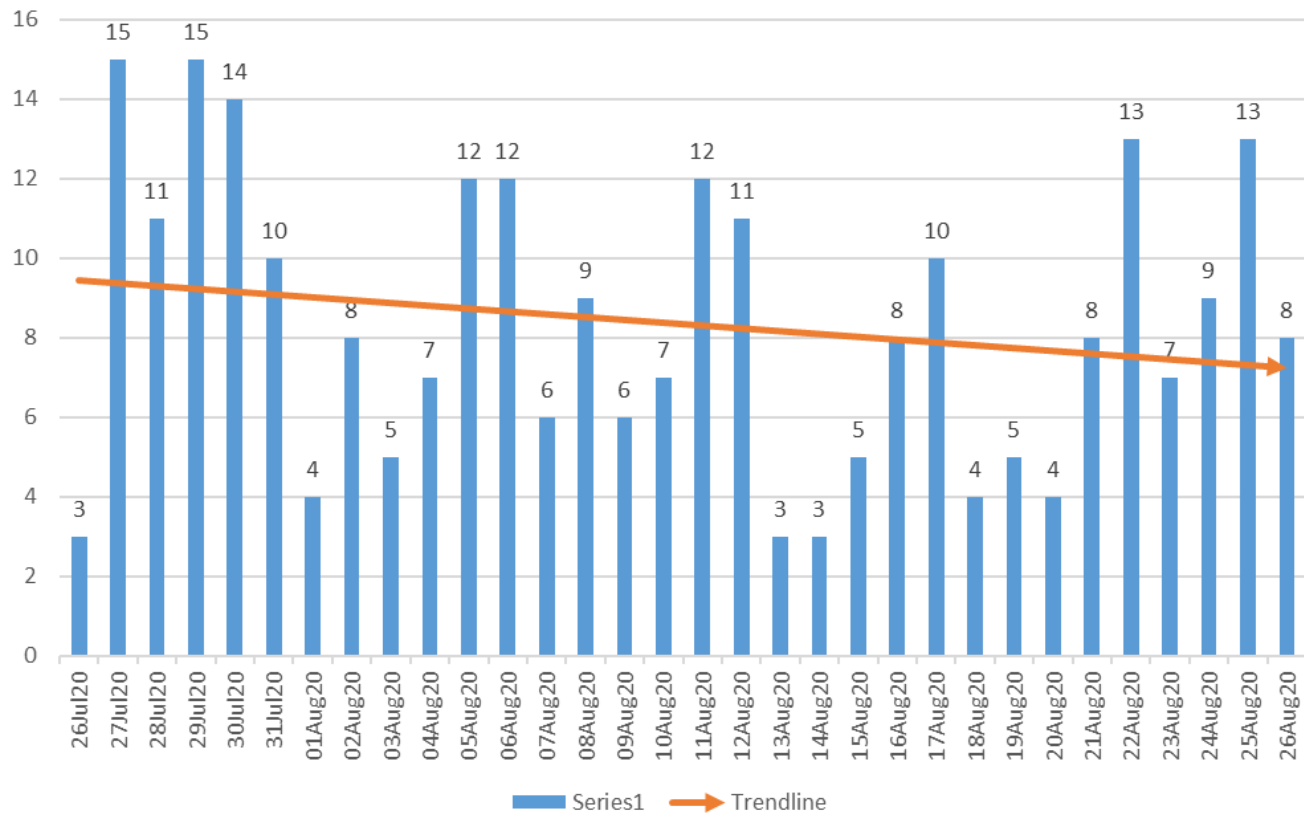
**30 Day COVID-19 Trends
for Oklahoma City-Metropolitan Area
July 26-August 26, 2020**

**Cumulative Case Counts and Deaths for Oklahoma County, Oklahoma, and the United States
As of August 27, 2020**

	Confirmed Cases	Deaths
Oklahoma County	12,974	150
Oklahoma	55,550	778
United States	5,821,819	179,708

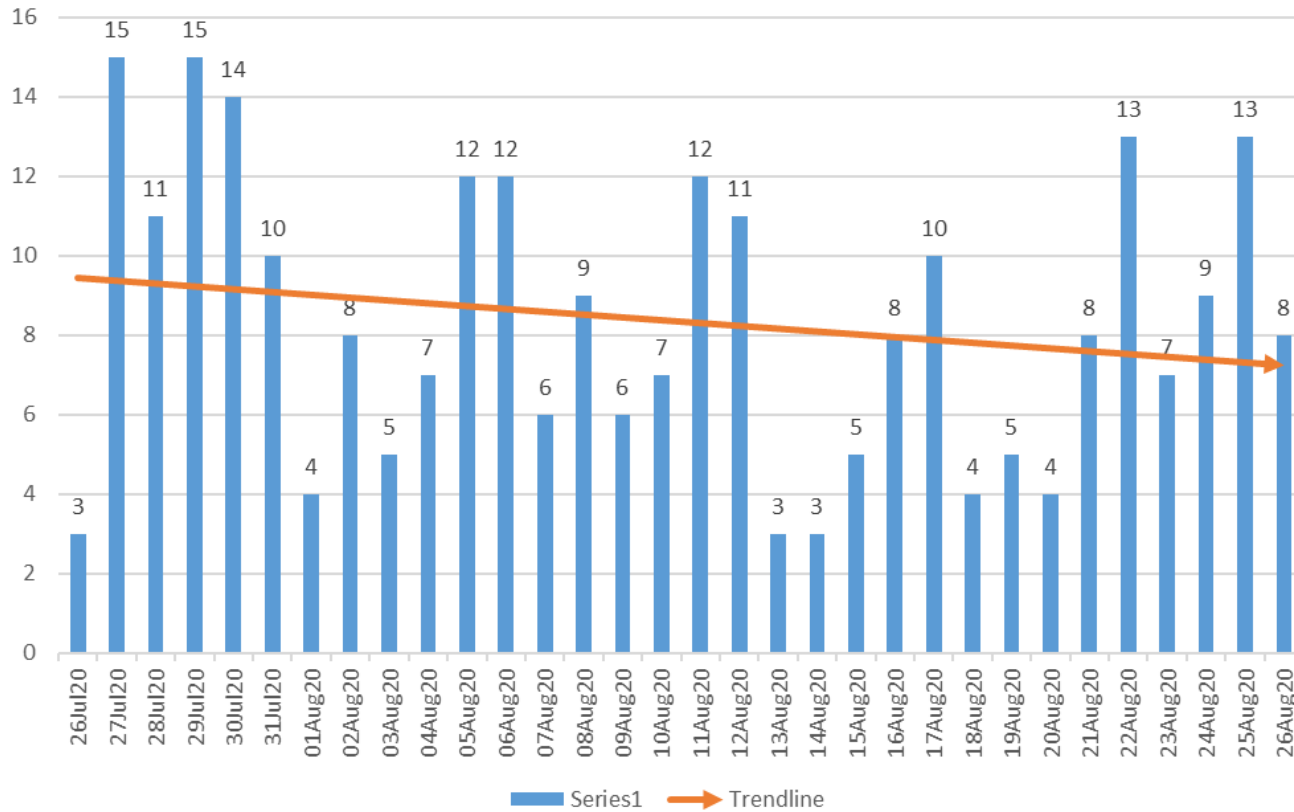


Oklahoma County Syndromic Surveillance of Influenza-like Illness(ILI) ED Visits July 26-Aug 26, 2020



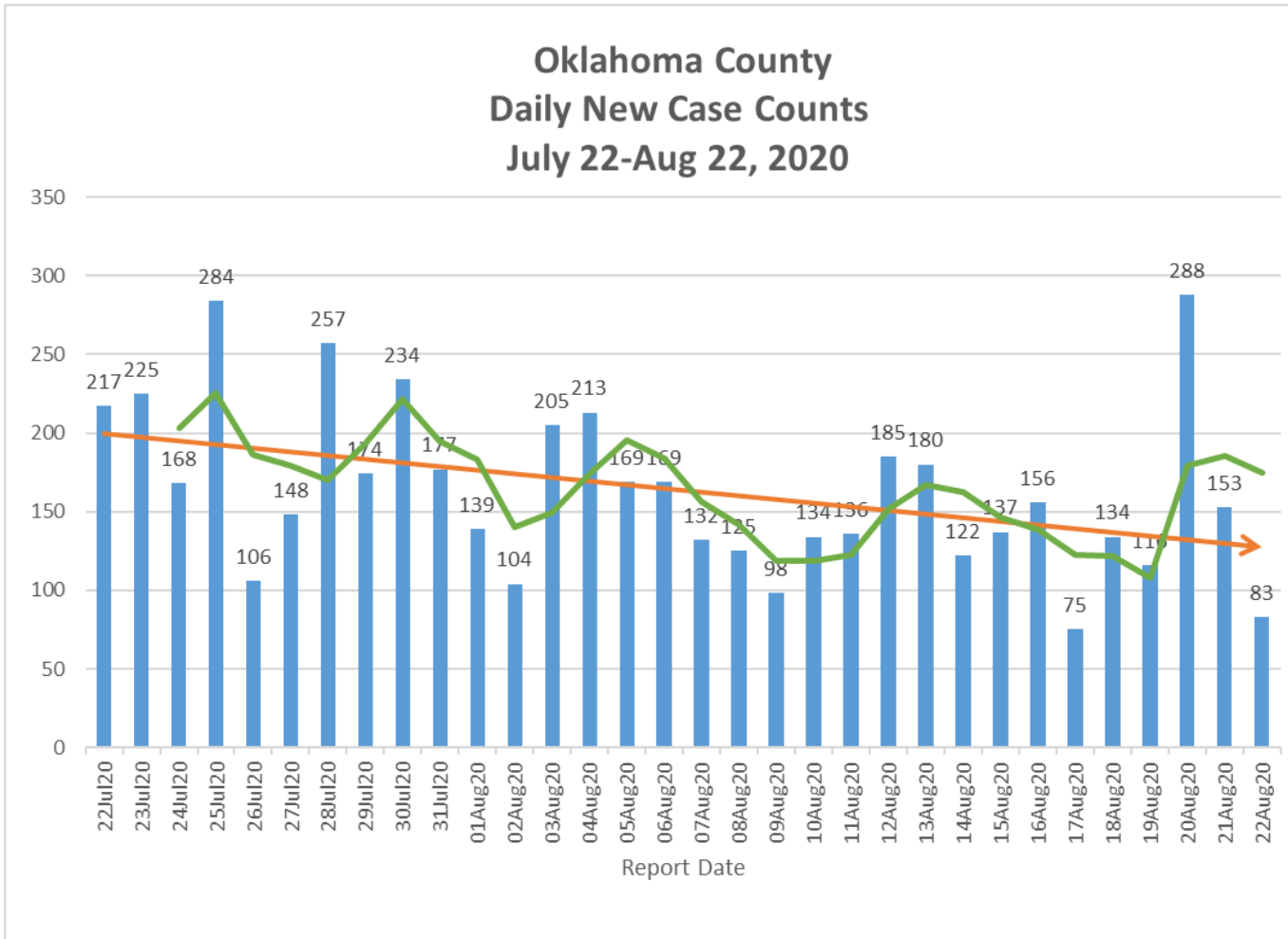


Oklahoma County Syndromic Surveillance of Influenza-like Illness(ILI) ED Visits July 26-Aug 26, 2020



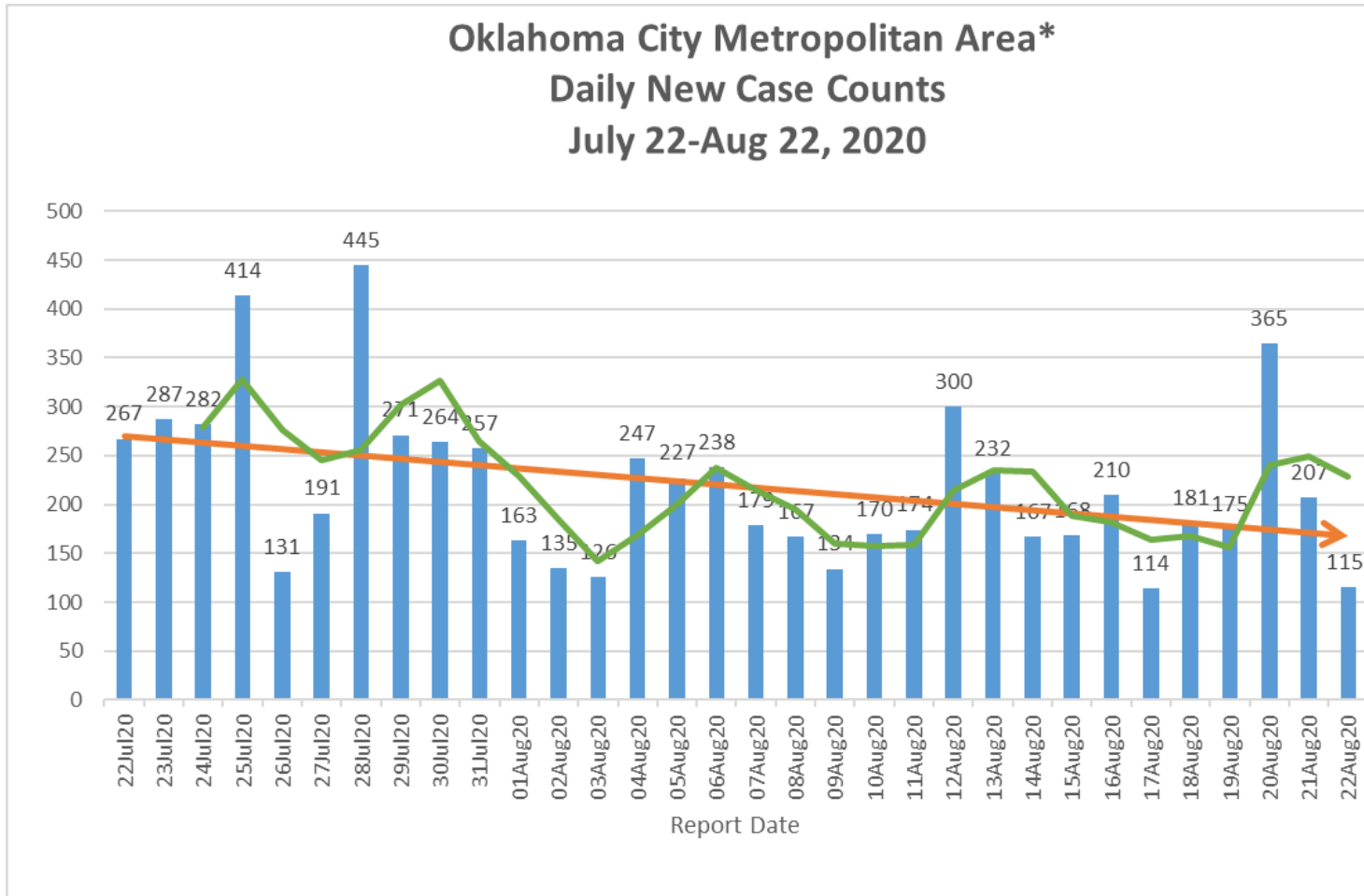


Oklahoma County Daily New Case Counts July 22-Aug 22, 2020





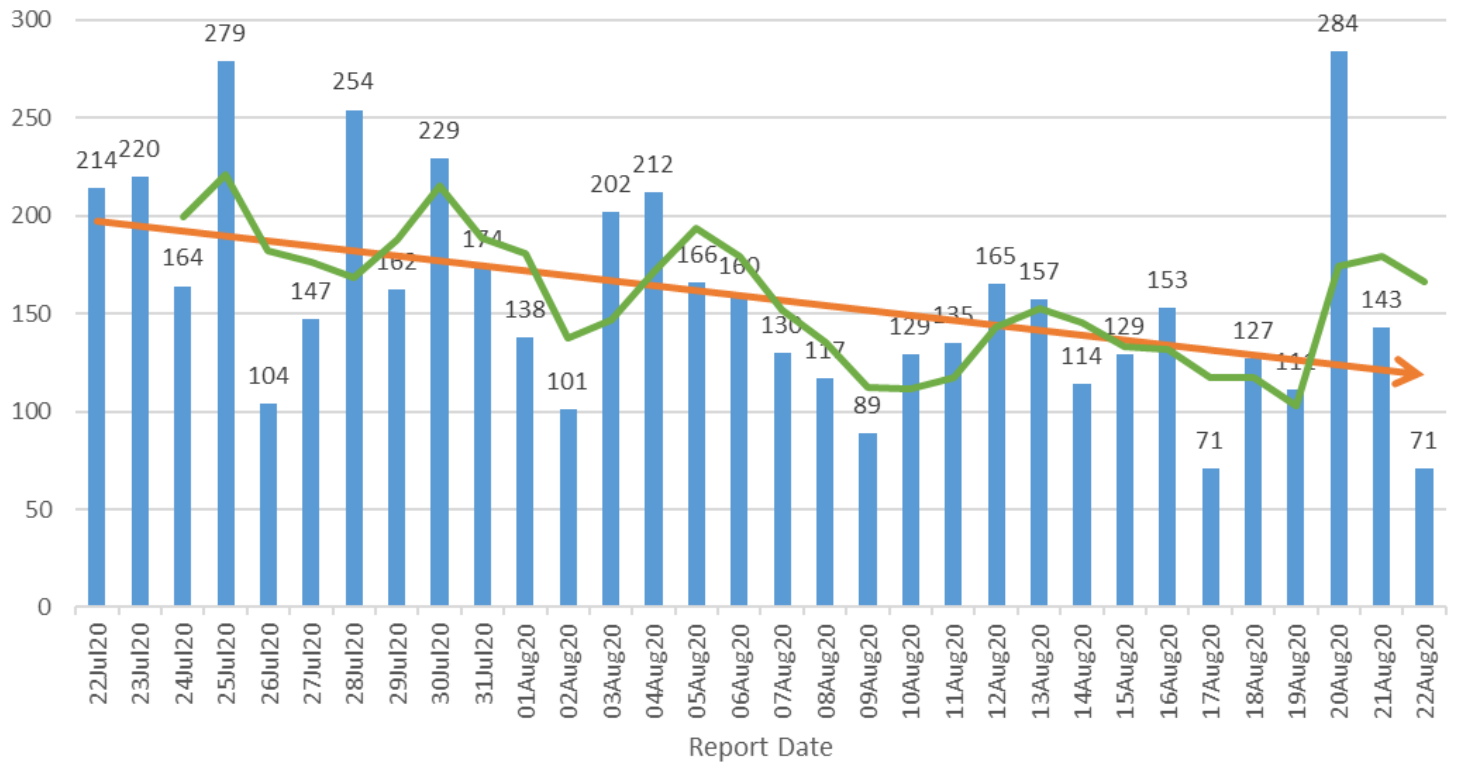
Oklahoma City Metropolitan Area* Daily New Case Counts July 22-Aug 22, 2020



*Includes daily new cases from Oklahoma, Cleveland, and Canadian Counties.

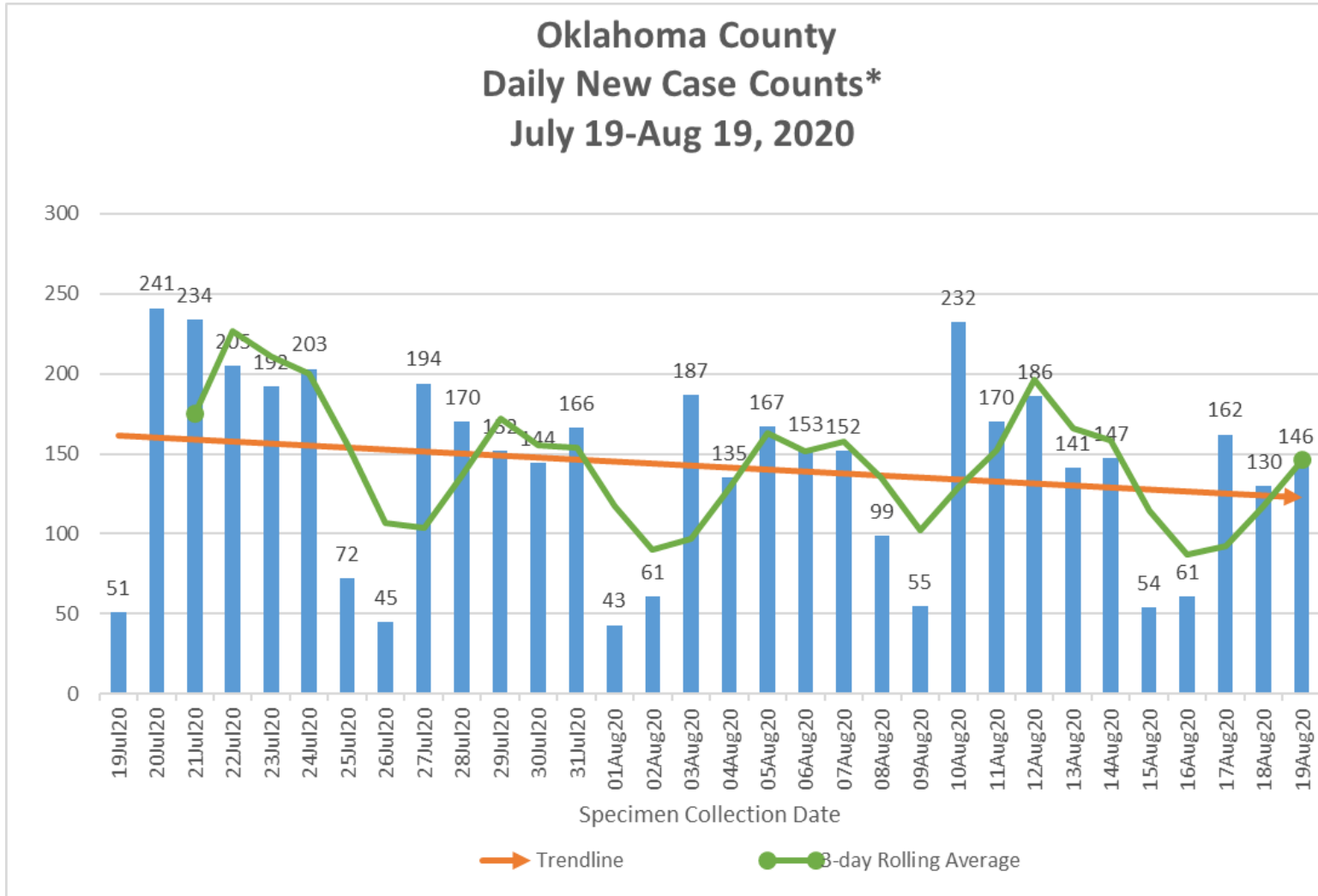


Oklahoma County Daily New Case Counts (excludes LTC cases) July 22-Aug 22, 2020





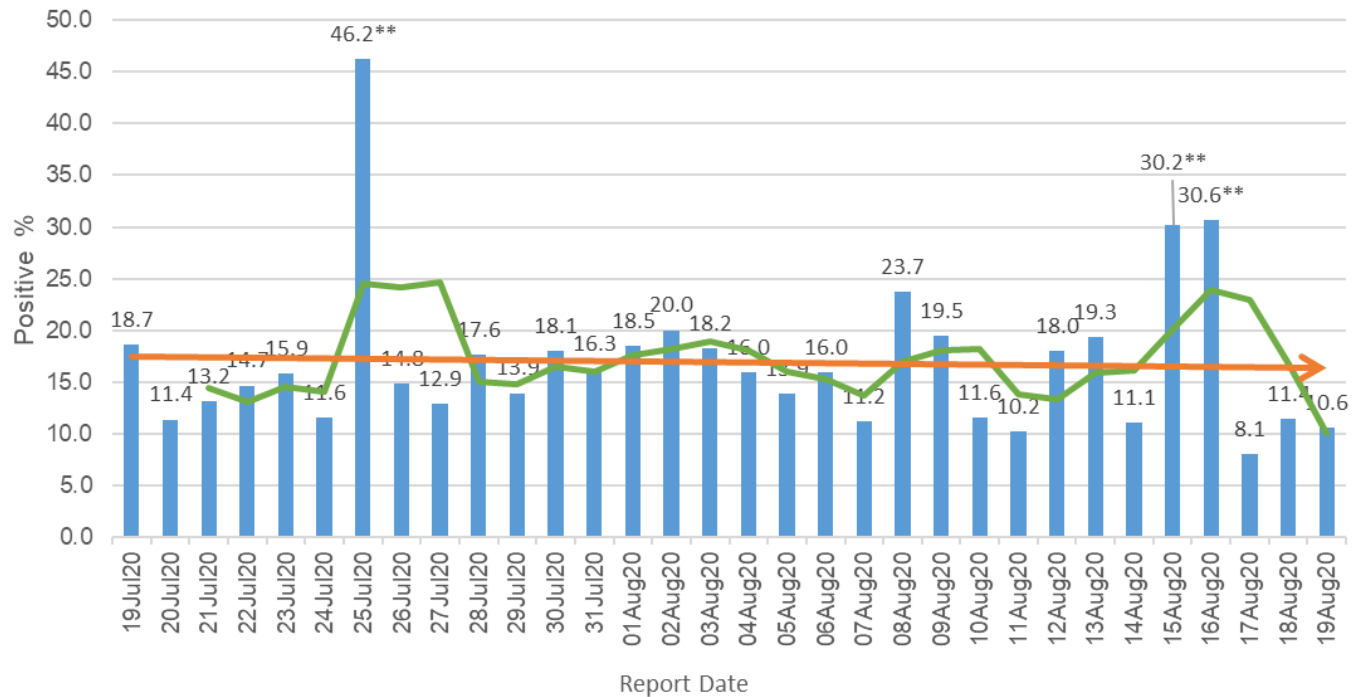
Oklahoma County Daily New Case Counts* July 19-Aug 19, 2020



*Case Counts by Specimen Collection Date



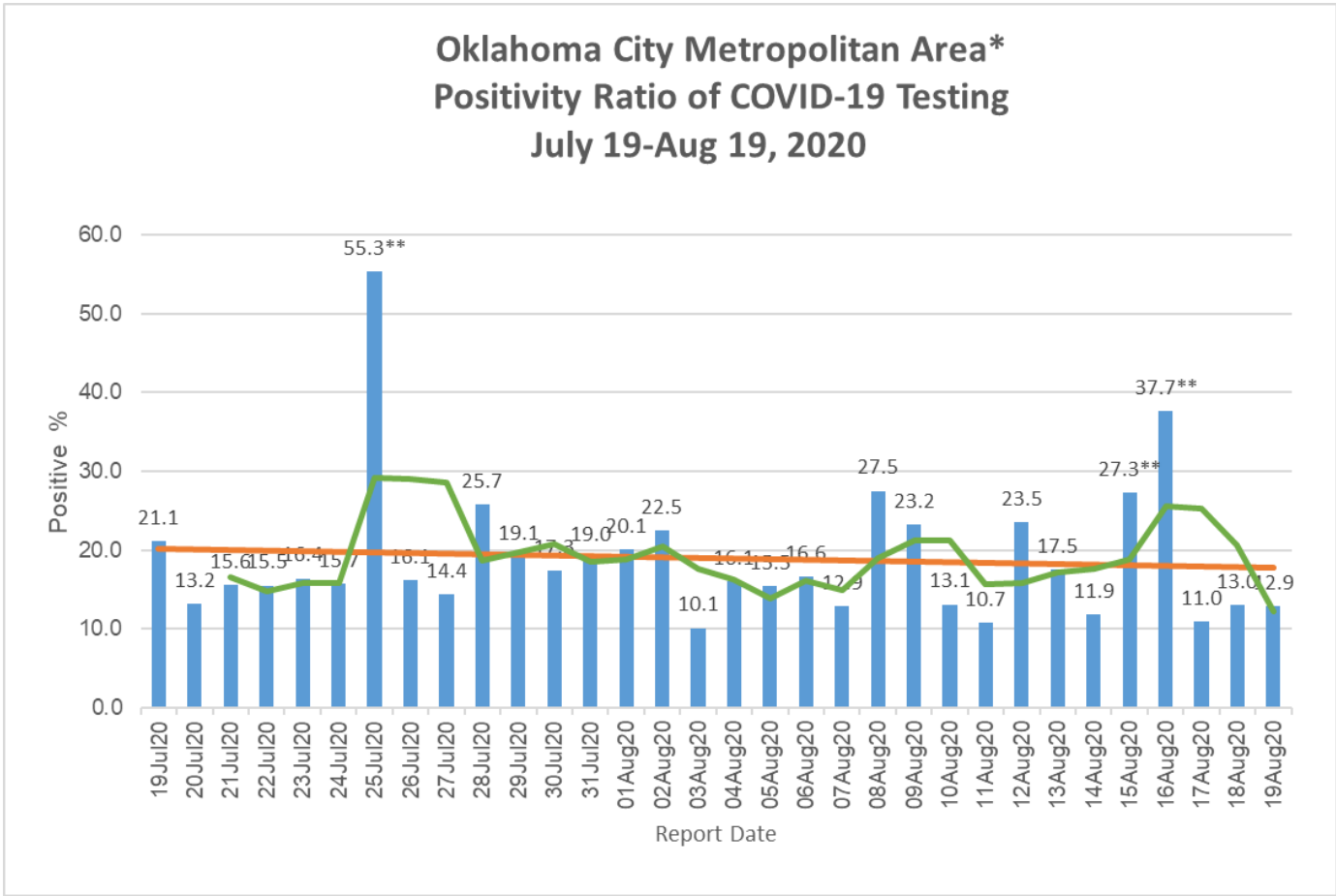
Oklahoma County Positivity Ratio of COVID-19 Testing July 19-Aug 19, 2020



**Outliers attributed to low number of total tests performed.



Oklahoma City Metropolitan Area* Positivity Ratio of COVID-19 Testing July 19-Aug 19, 2020

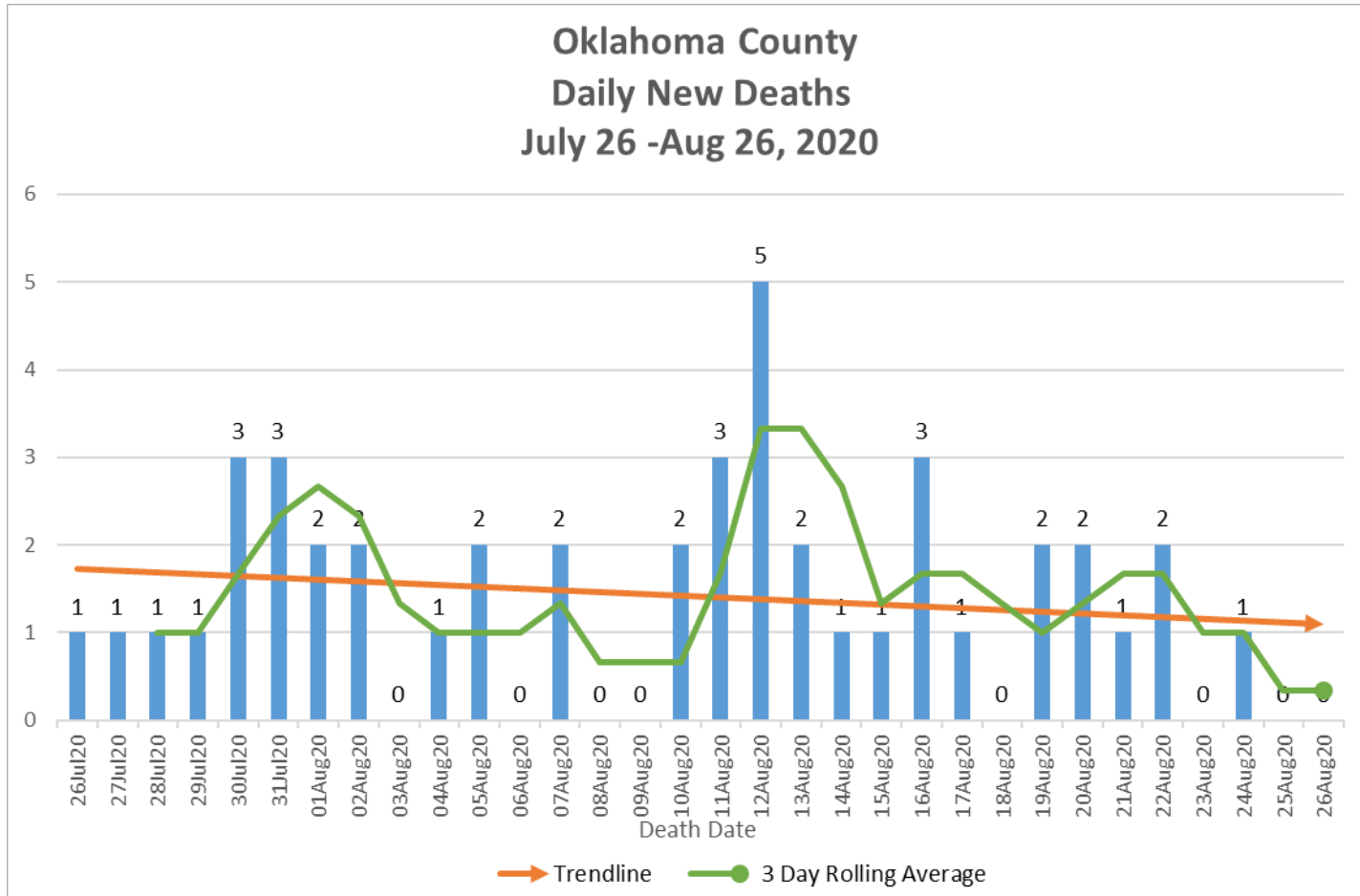


*Includes daily new positive results from Oklahoma, Cleveland, and Canadian Counties.

**Outliers attributed to low number of total tests performed.

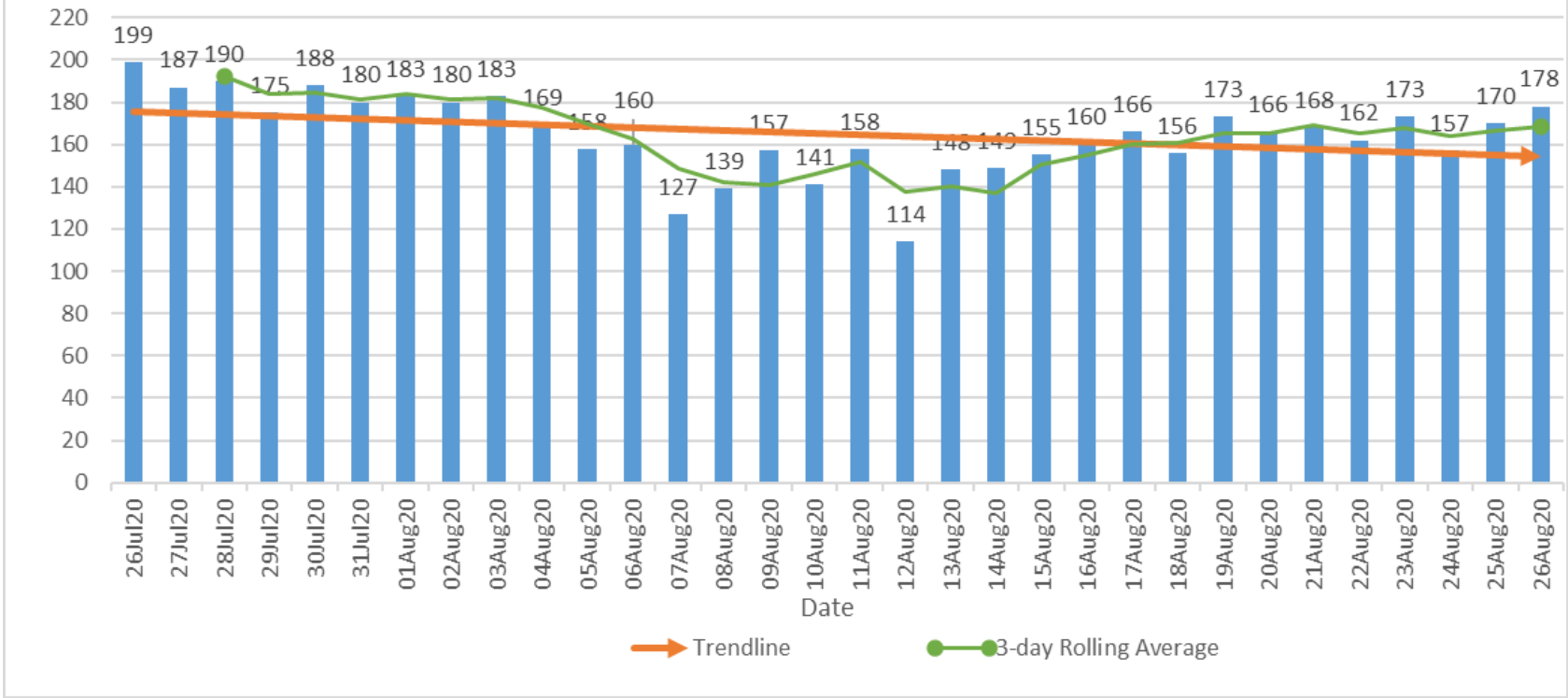


Oklahoma County Daily New Deaths July 26 -Aug 26, 2020





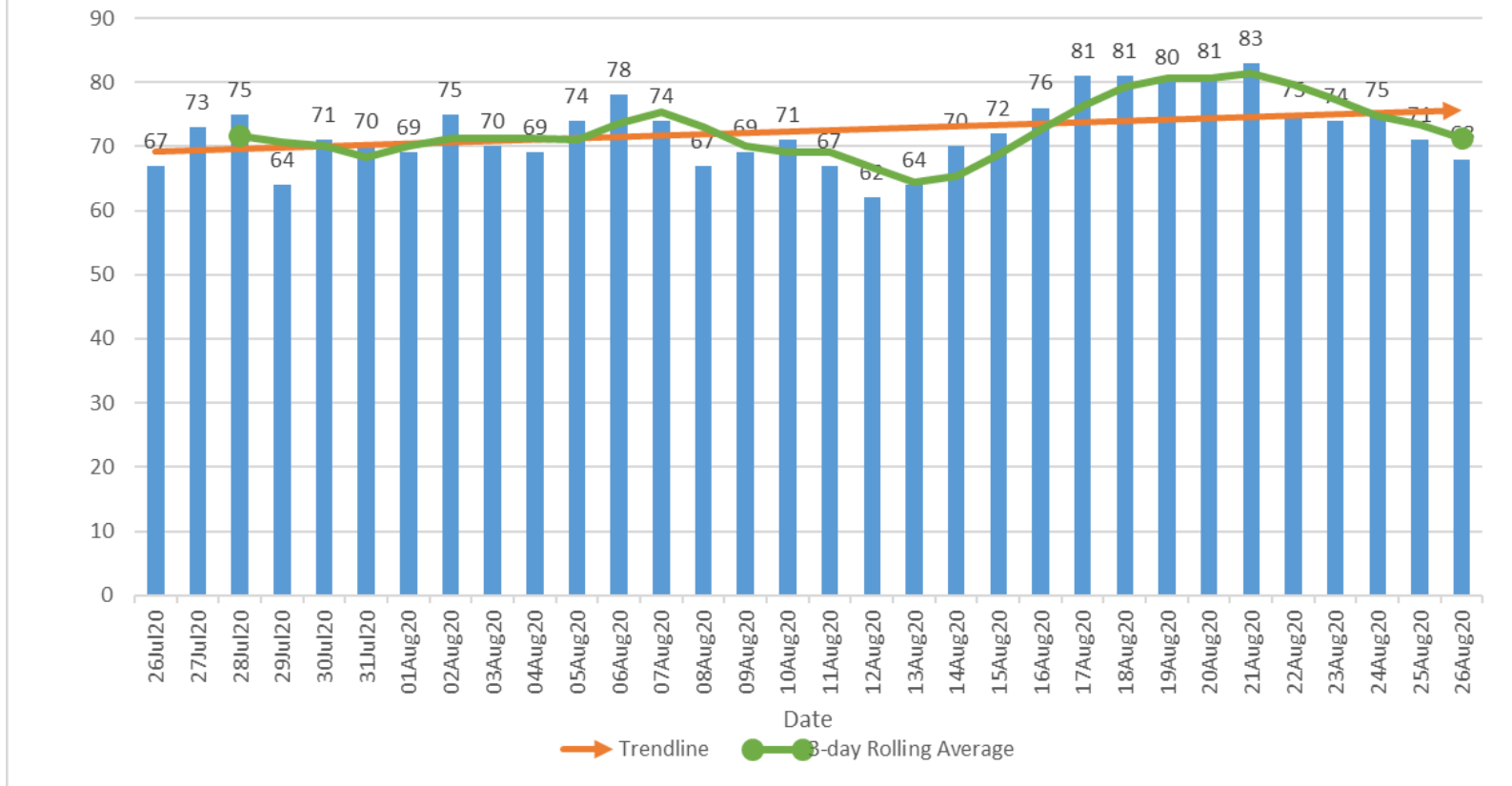
Oklahoma County Daily Current Hospitalizations July 26-Aug 26, 2020



*Includes all COVID-19 hospitalizations in Oklahoma County Hospitals.



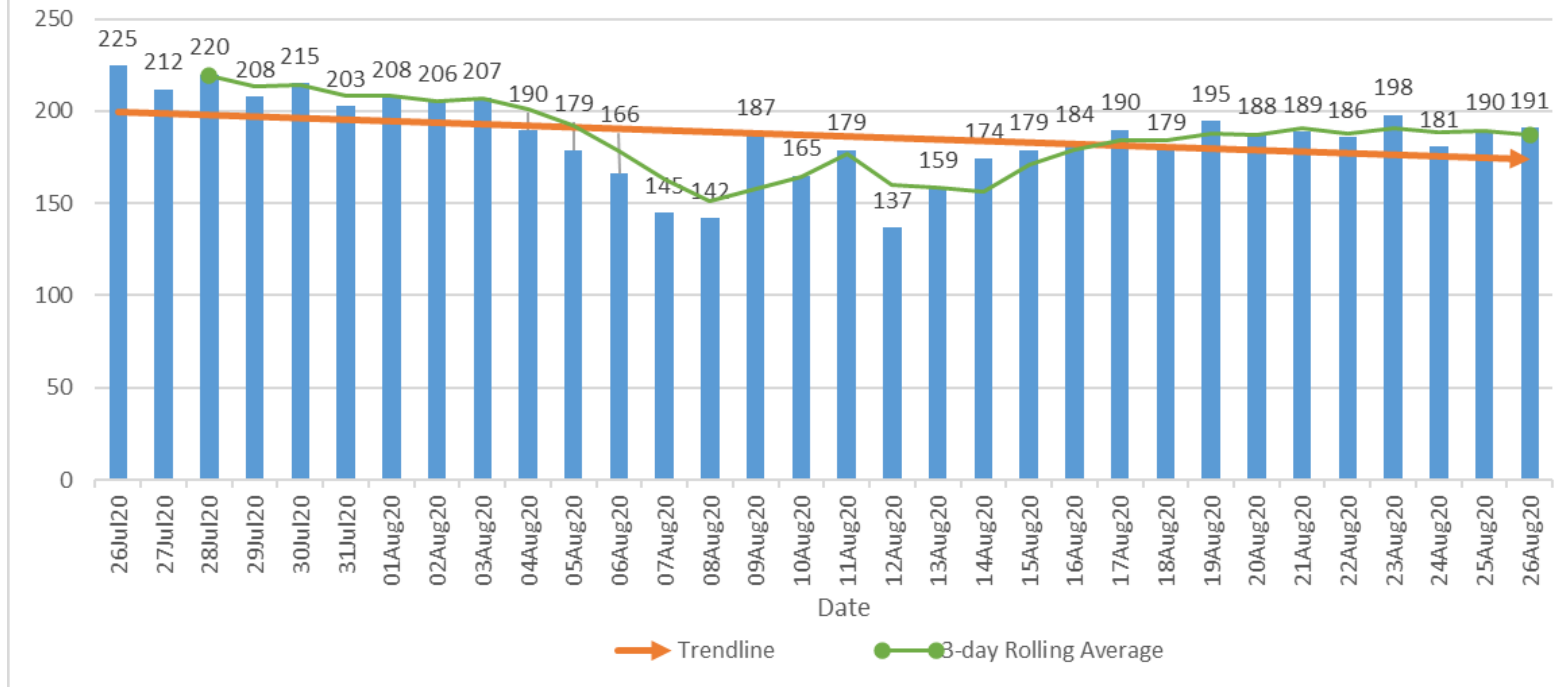
Oklahoma County Daily Current ICU Hospitalizations July 26-Aug 26, 2020



*Includes all COVID-19 ICU hospitalizations in Oklahoma County Hospitals.



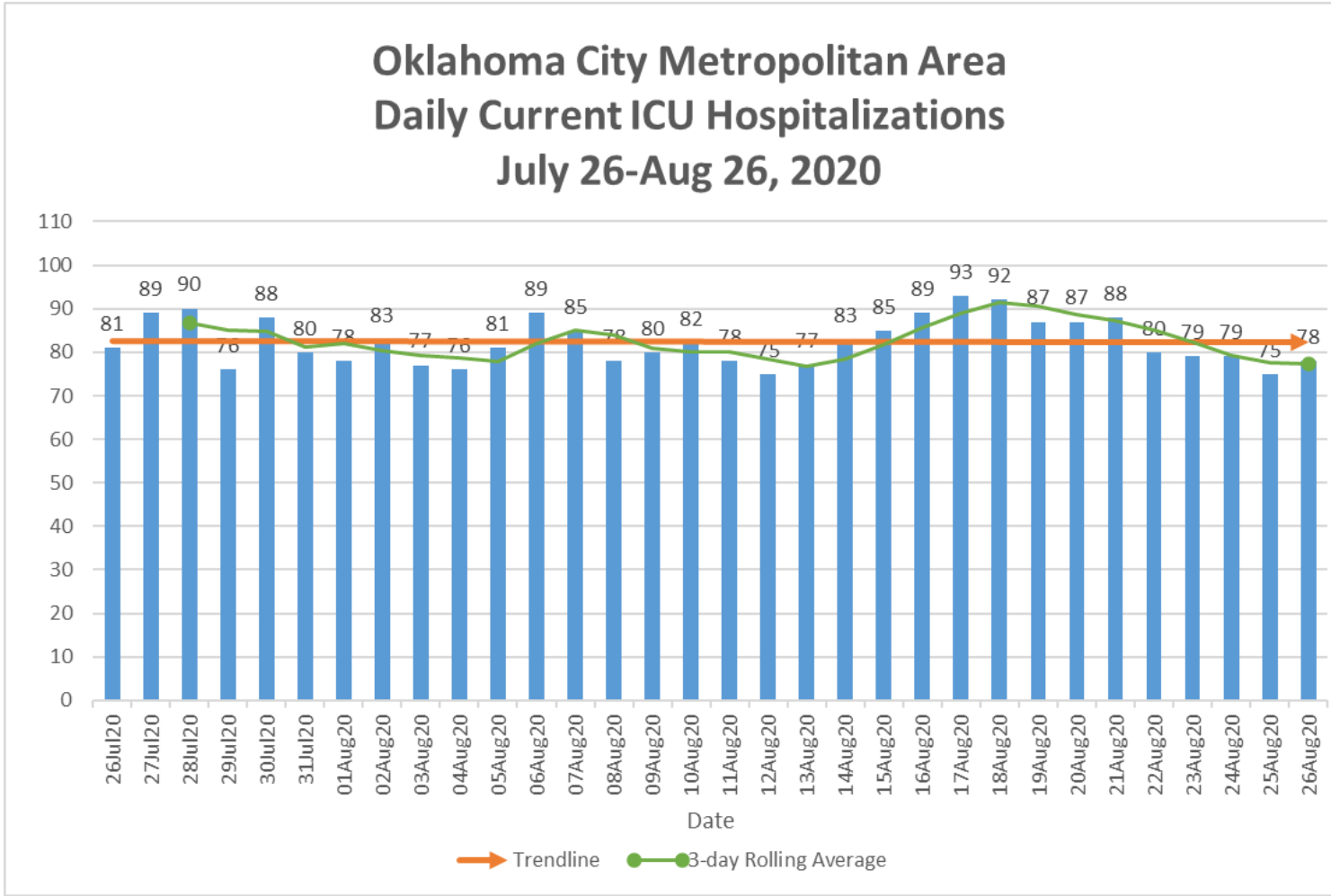
Oklahoma City Metropolitan Area Daily Current Hospitalizations July 26-Aug 26, 2020



*Includes all COVID-19 hospitalizations in Oklahoma, Cleveland and Canadian County hospitals.



Oklahoma City Metropolitan Area Daily Current ICU Hospitalizations July 26-Aug 26, 2020



*Includes all COVID-19 ICU hospitalizations in Oklahoma, Cleveland and Canadian County hospitals.