



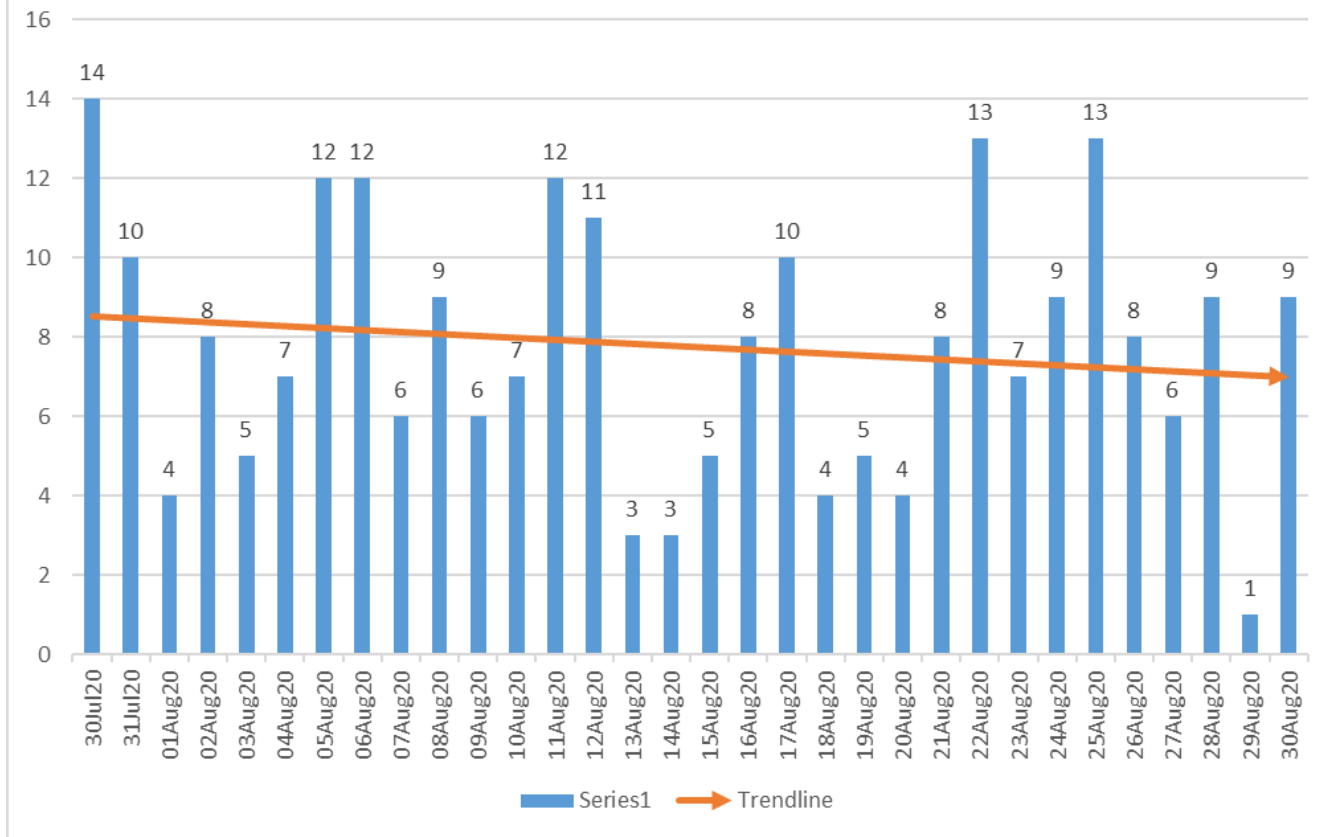
**30 Day COVID-19 Trends  
for Oklahoma City-Metropolitan Area  
July 30-August 30, 2020**

**Cumulative Case Counts and Deaths for Oklahoma County, Oklahoma, and the United States  
As of August 31, 2020**

	<b>Confirmed Cases</b>	<b>Deaths</b>
Oklahoma County	13,436	154
Oklahoma	58,733	800
United States	5,996,431	183,066

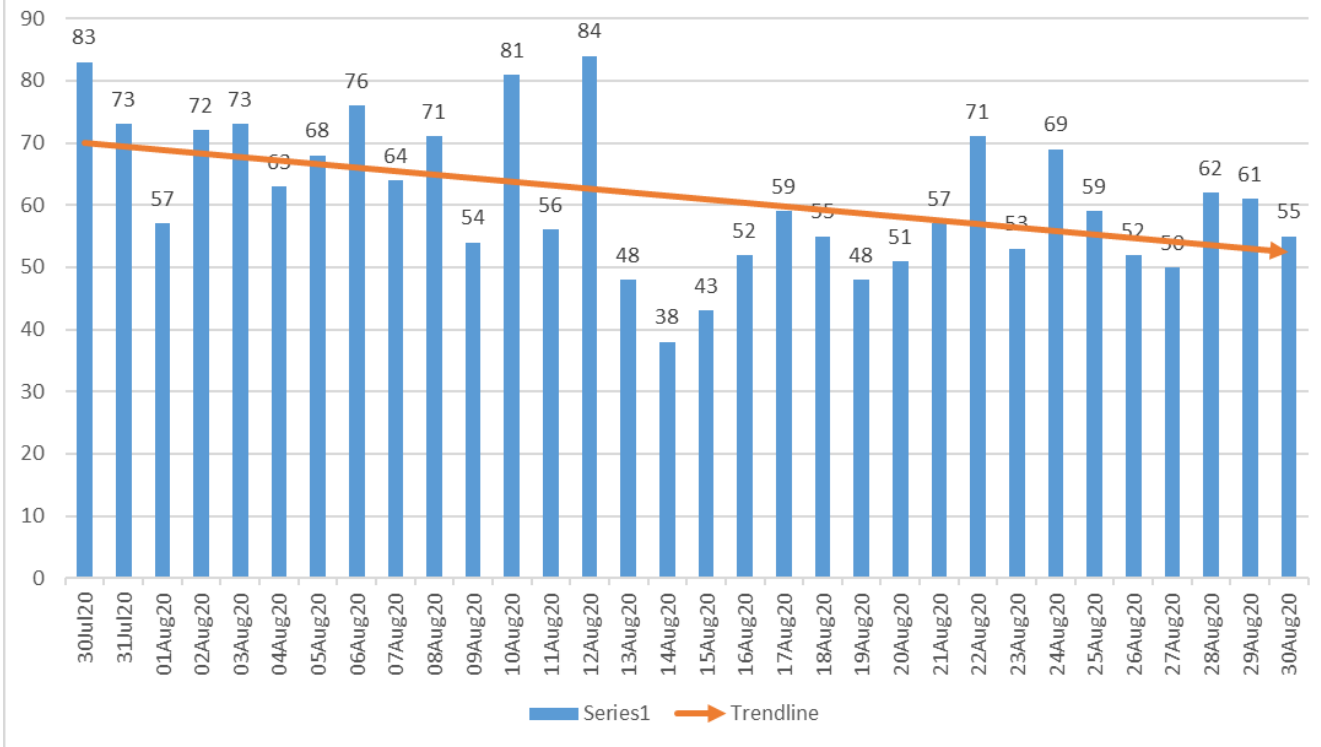


### Oklahoma County Syndromic Surveillance of Influenza-like Illness(ILI) ED Visits July 30-Aug 30, 2020



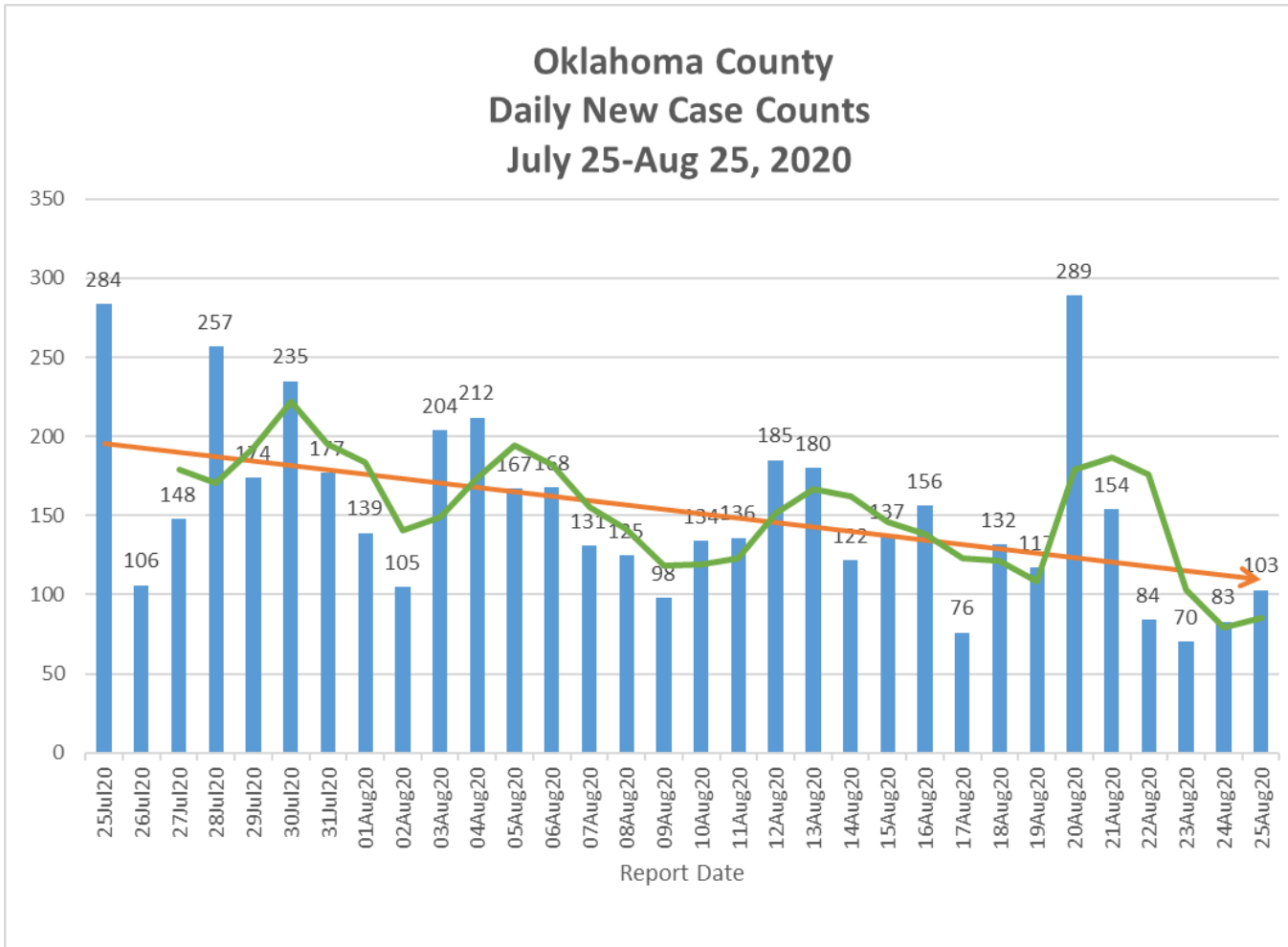


### Oklahoma County Syndromic Surveillance of COVID-19 related ED Visits July 30-Aug 30, 2020



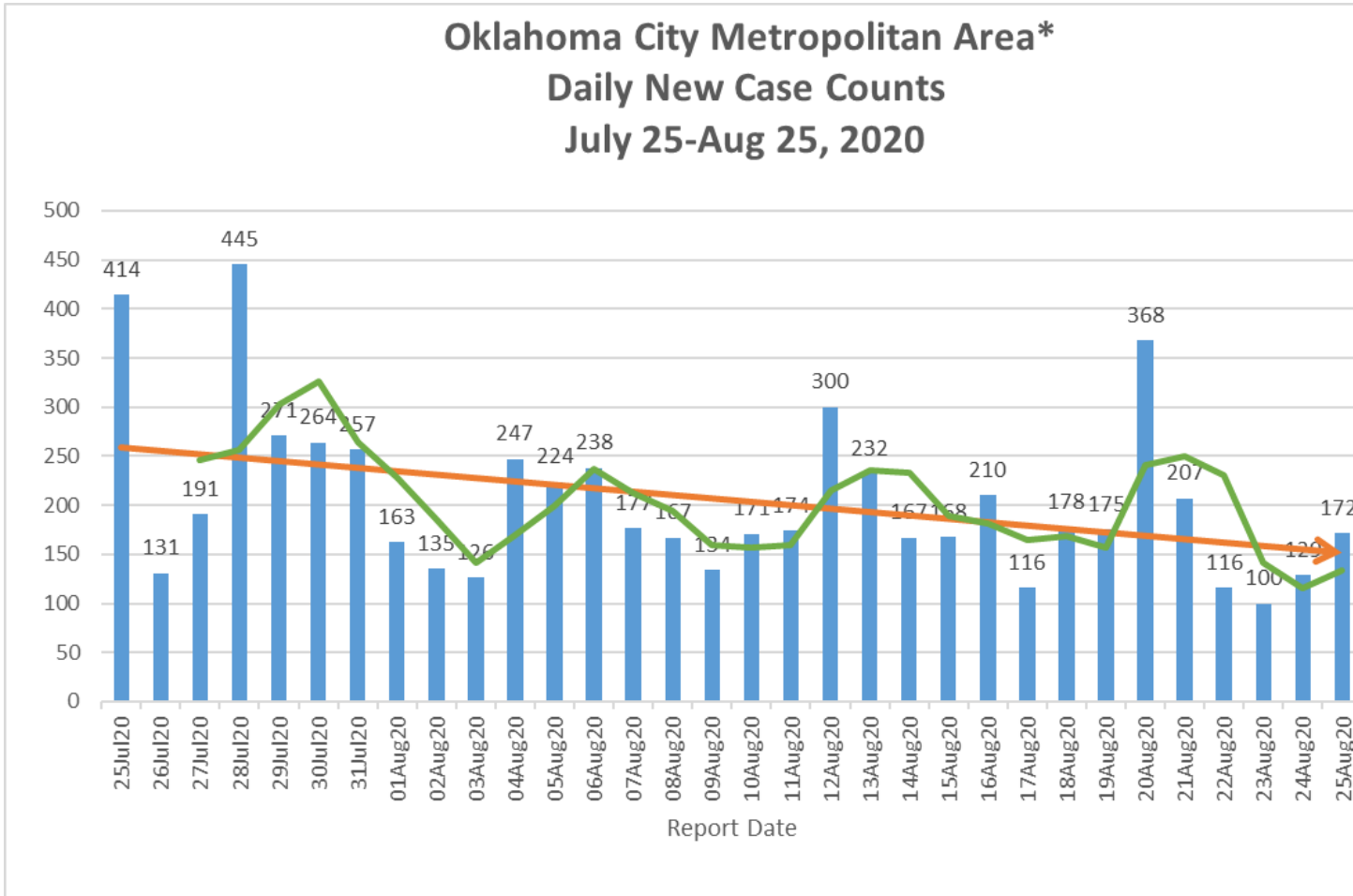


### Oklahoma County Daily New Case Counts July 25-Aug 25, 2020





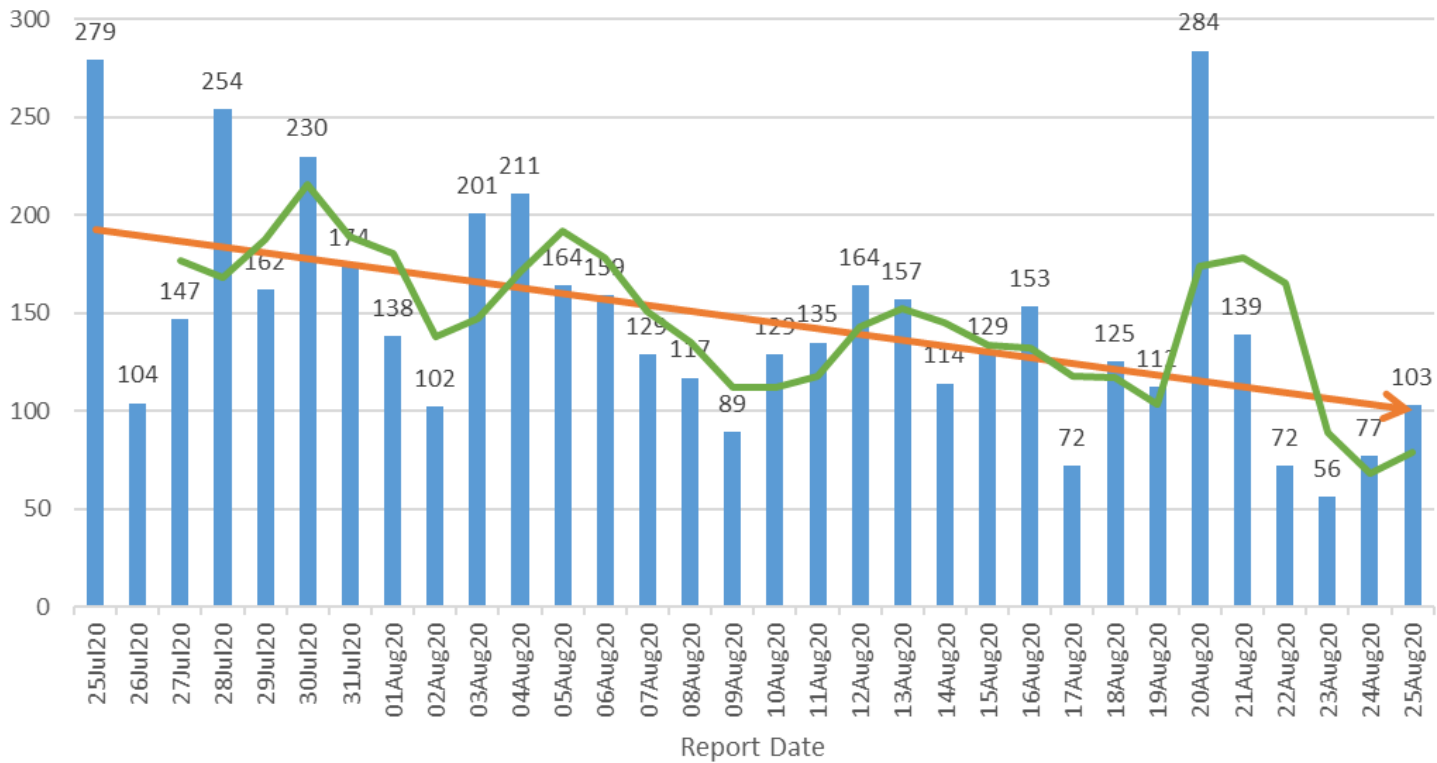
### Oklahoma City Metropolitan Area\* Daily New Case Counts July 25-Aug 25, 2020



\*Includes daily new cases from Oklahoma, Cleveland, and Canadian Counties.

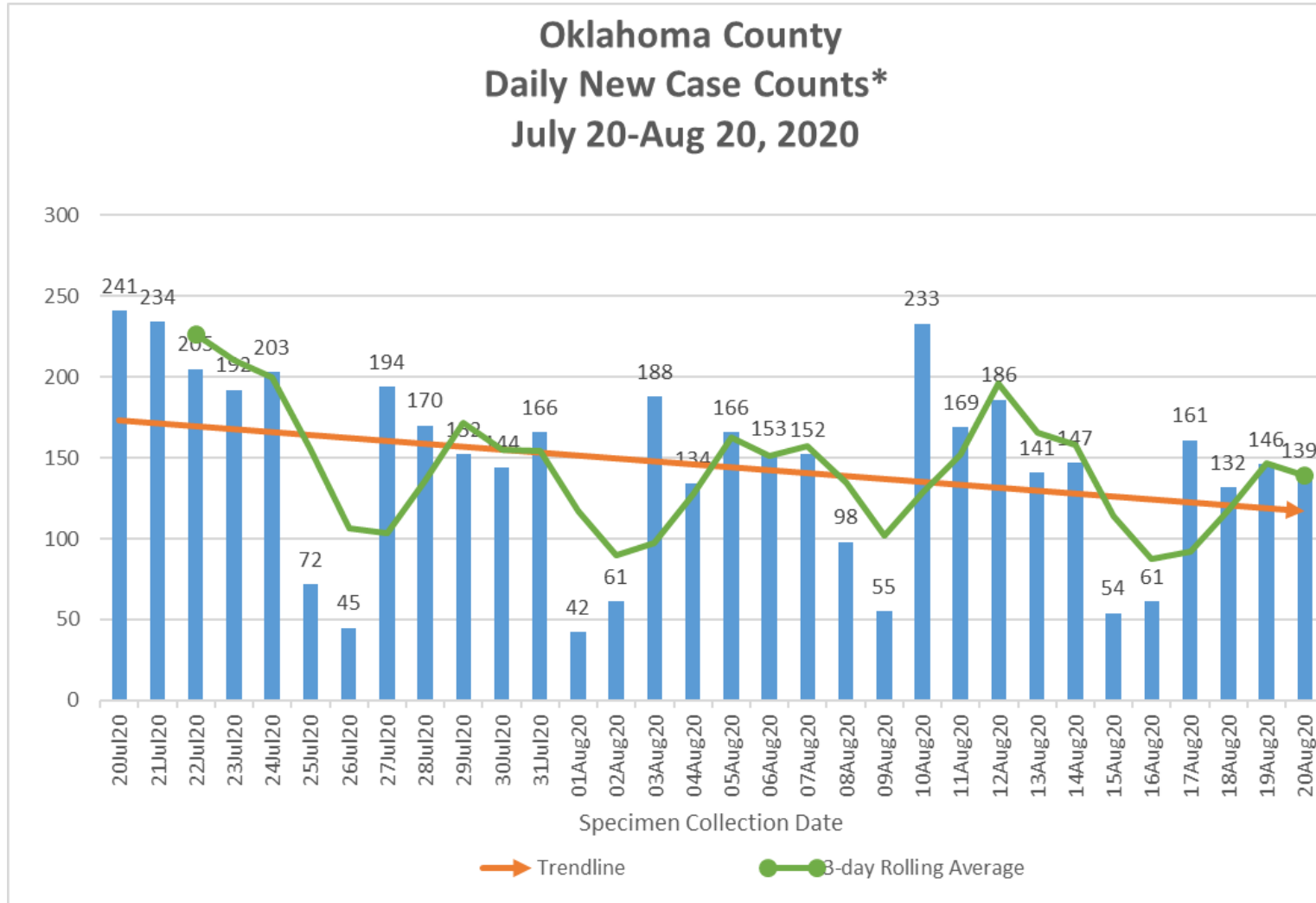


### Oklahoma County Daily New Case Counts (excludes LTC cases) July 25-Aug 25, 2020





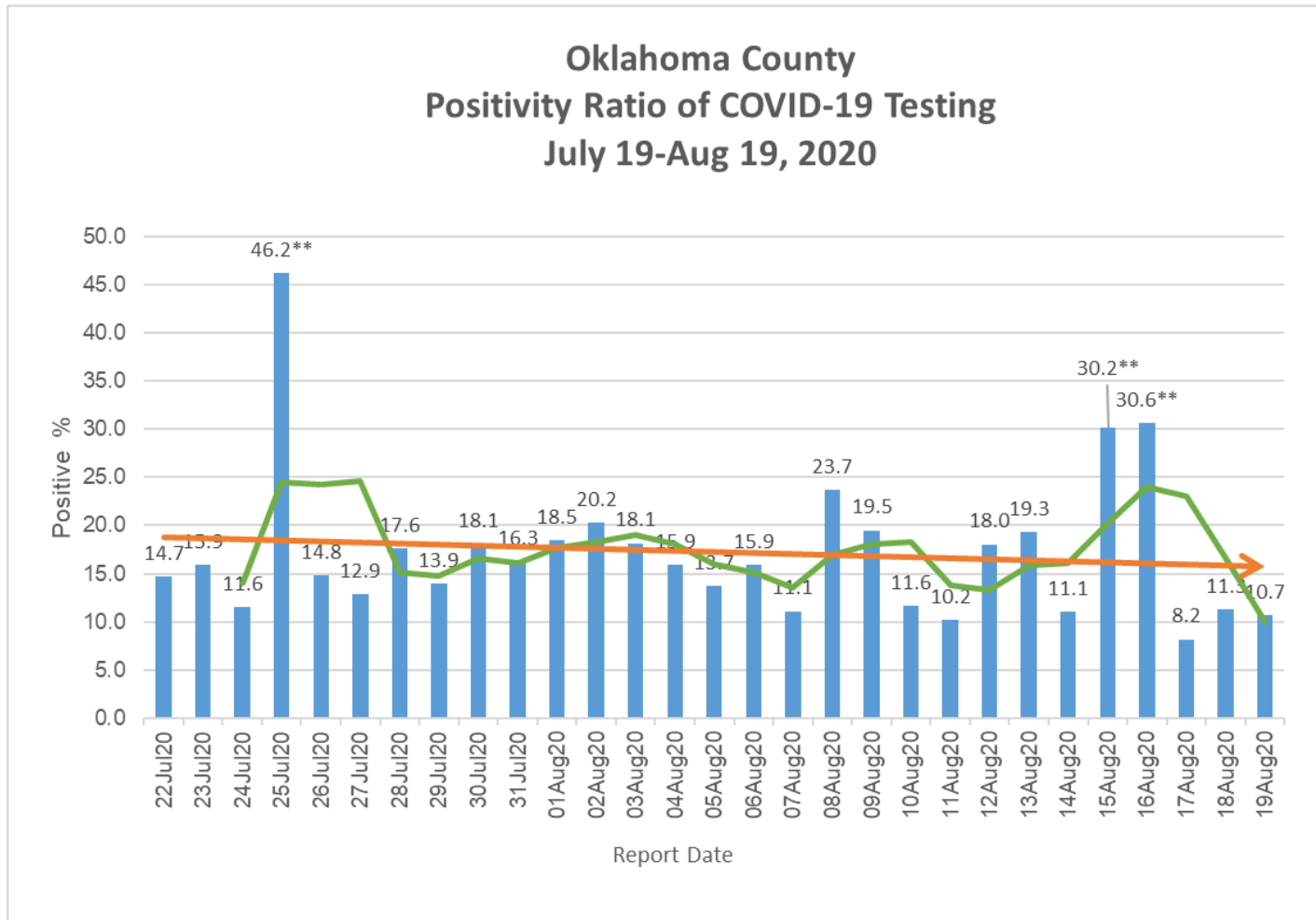
## Oklahoma County Daily New Case Counts\* July 20-Aug 20, 2020



\*Case Counts by Specimen Collection Date

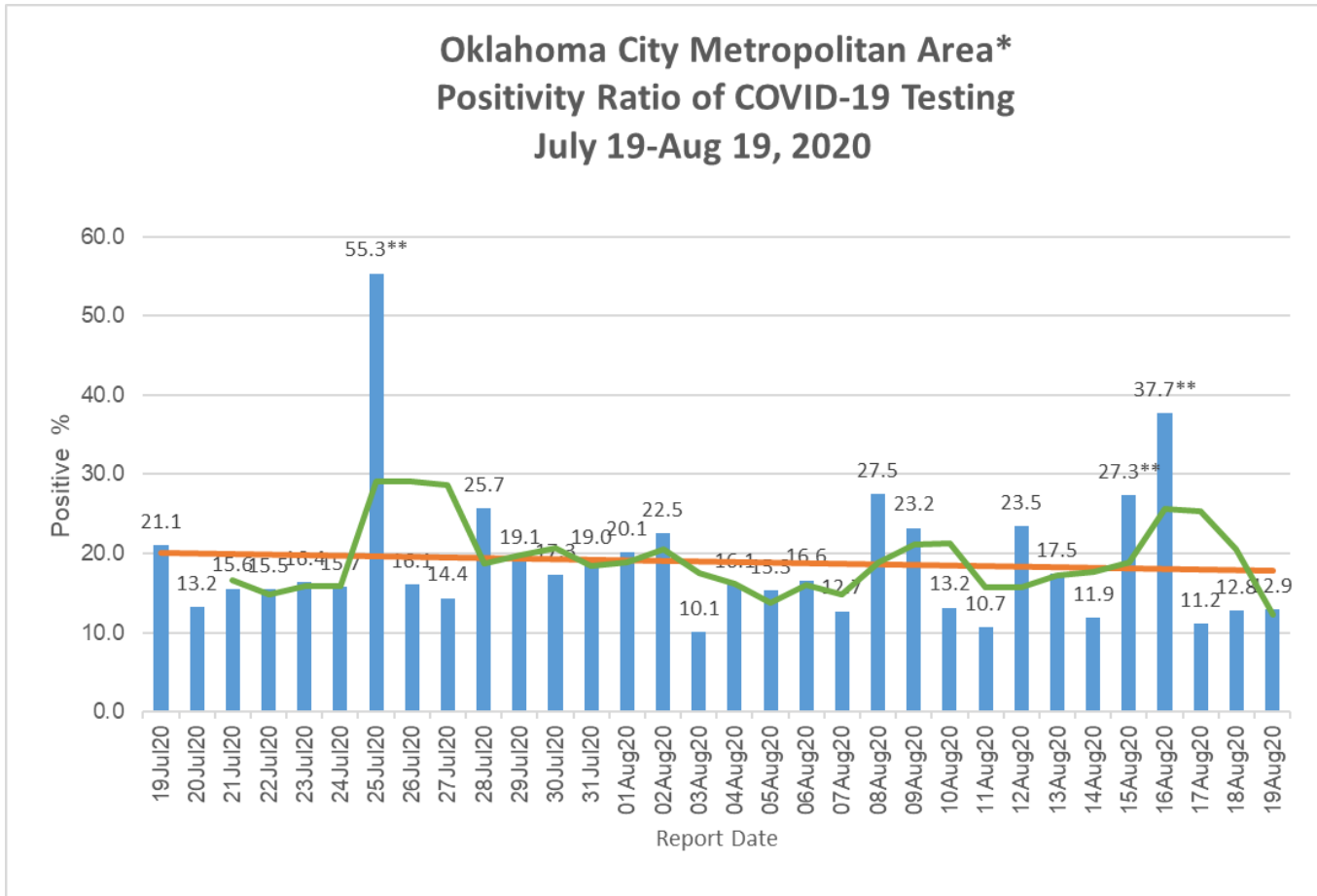


### Oklahoma County Positivity Ratio of COVID-19 Testing July 19-Aug 19, 2020



\*\*Outliers attributed to low number of total tests performed.



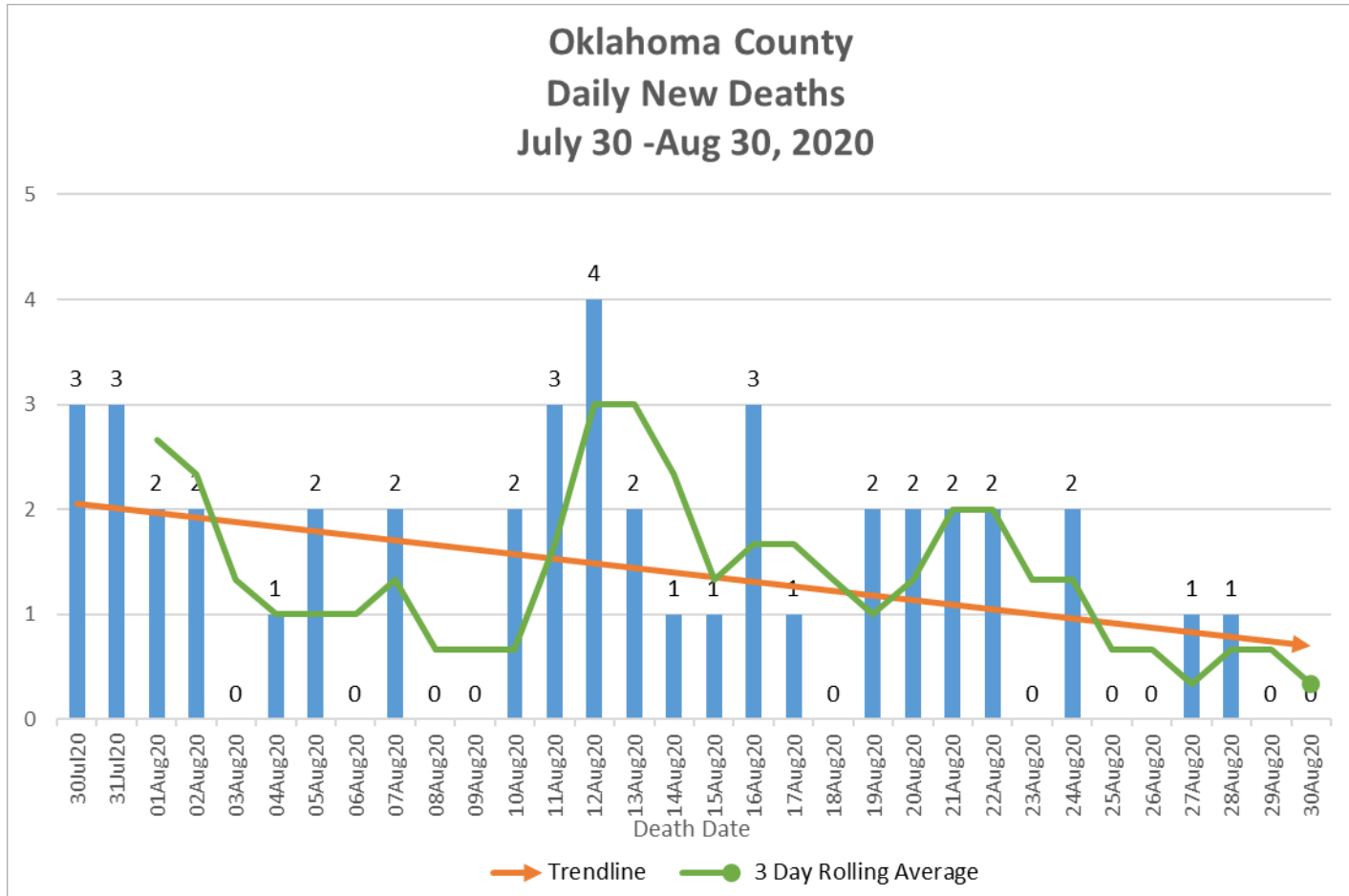


\*Includes daily new positive results from Oklahoma, Cleveland, and Canadian Counties.

\*\*Outliers attributed to low number of total tests performed.

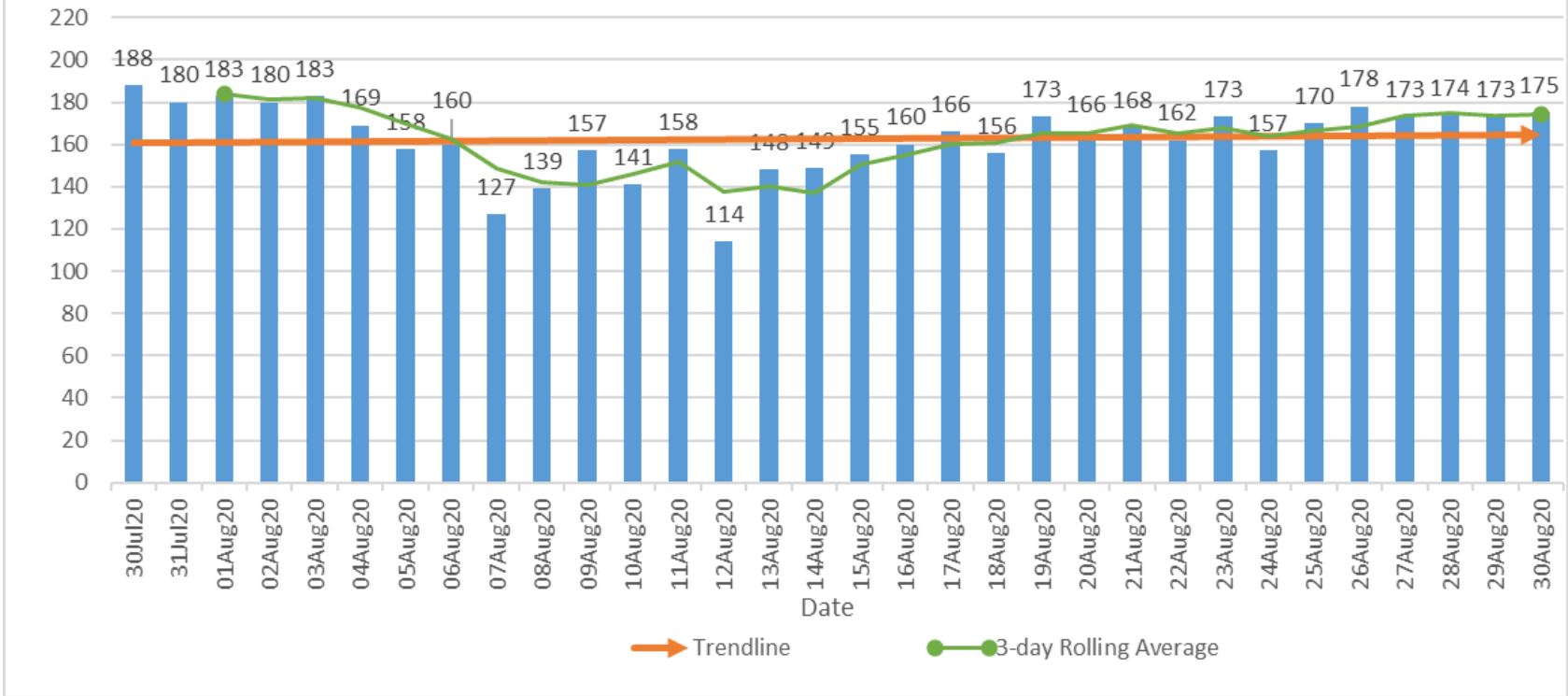


### Oklahoma County Daily New Deaths July 30 -Aug 30, 2020





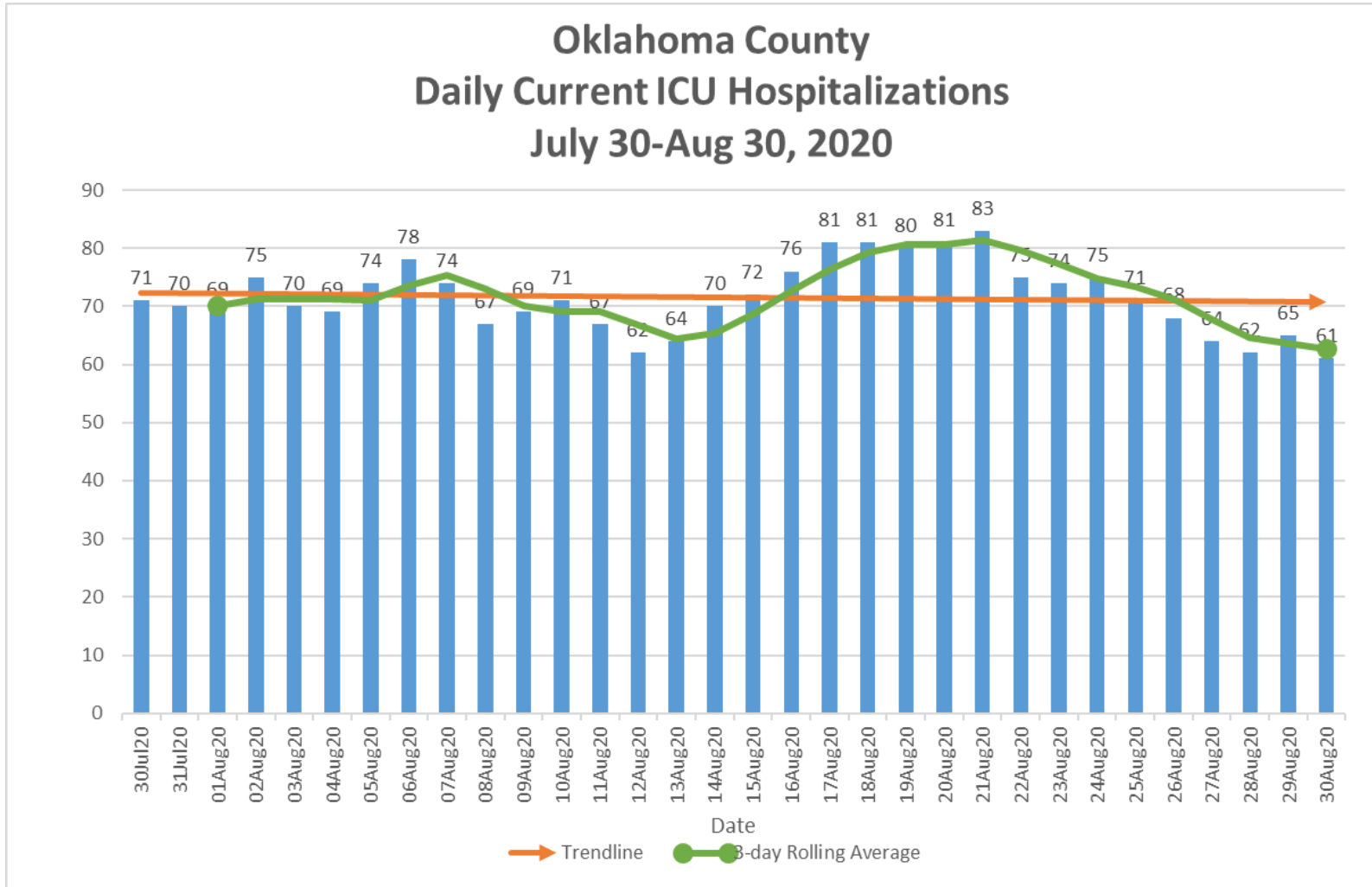
### Oklahoma County Daily Current Hospitalizations July 30-Aug 30, 2020



\*Includes all COVID-19 hospitalizations in Oklahoma County Hospitals.



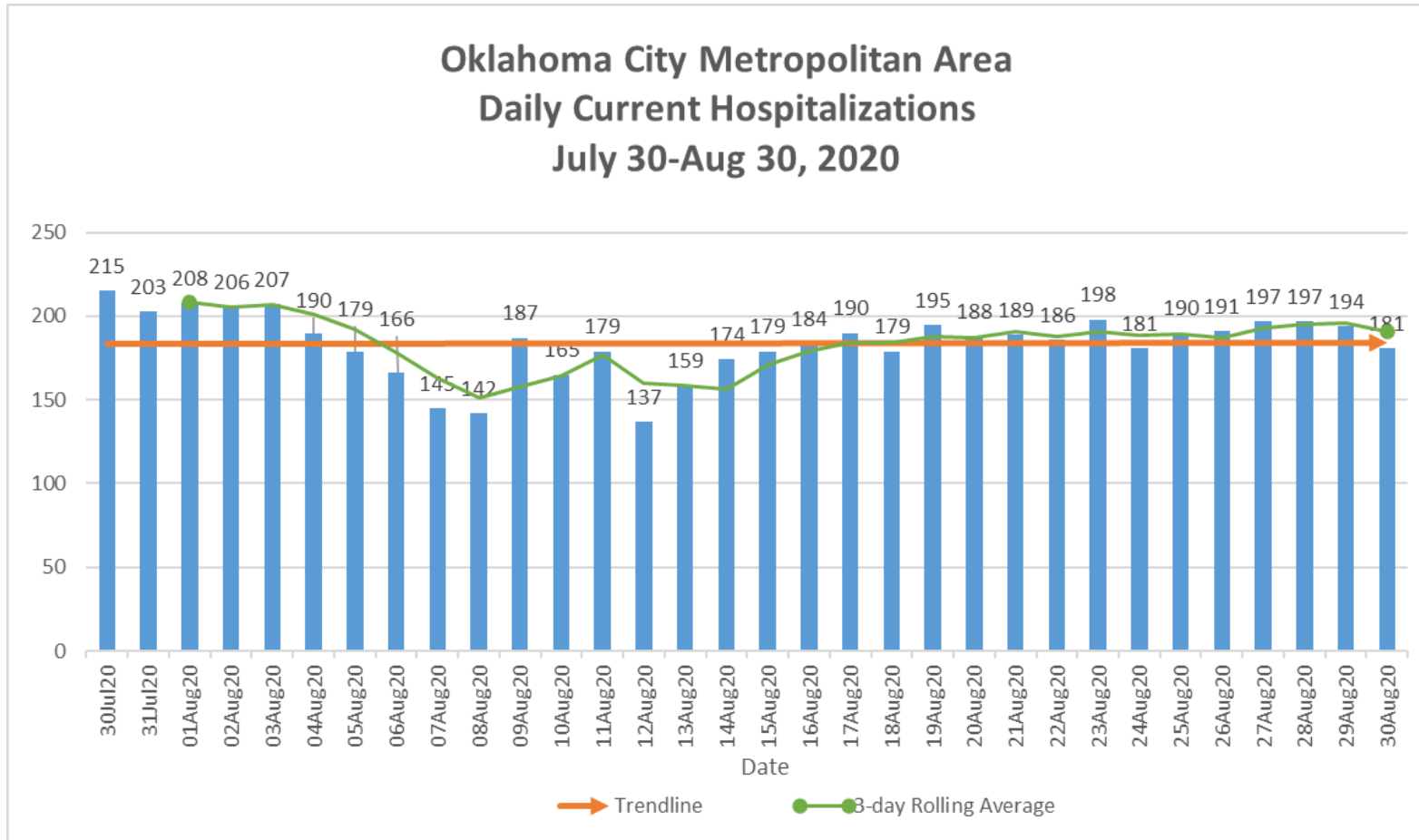
### Oklahoma County Daily Current ICU Hospitalizations July 30-Aug 30, 2020



\*Includes all COVID-19 ICU hospitalizations in Oklahoma County Hospitals.



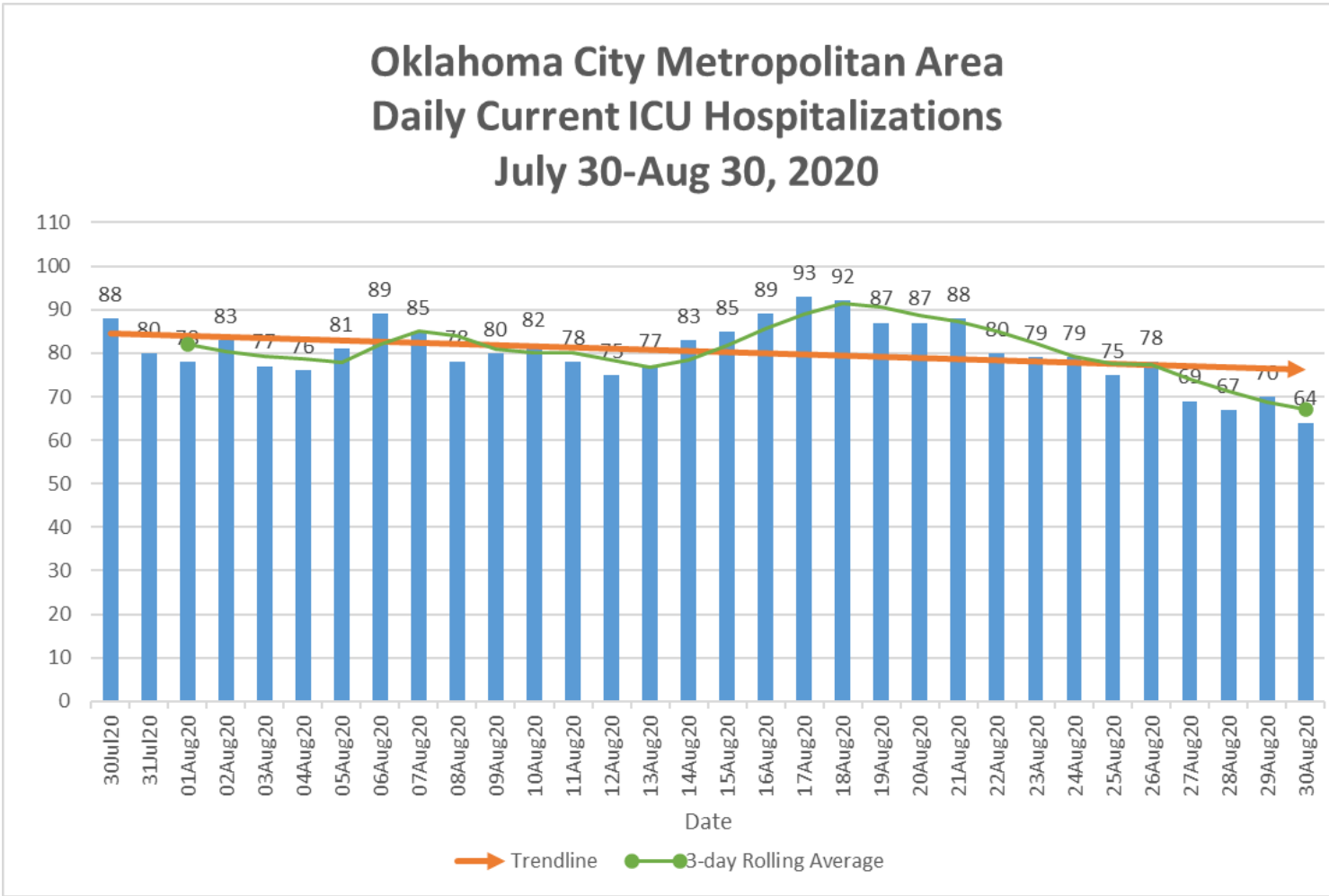
### Oklahoma City Metropolitan Area Daily Current Hospitalizations July 30-Aug 30, 2020



\*Includes all COVID-19 hospitalizations in Oklahoma, Cleveland and Canadian County hospitals.



### Oklahoma City Metropolitan Area Daily Current ICU Hospitalizations July 30-Aug 30, 2020



\*Includes all COVID-19 ICU hospitalizations in Oklahoma, Cleveland and Canadian County hospitals.