



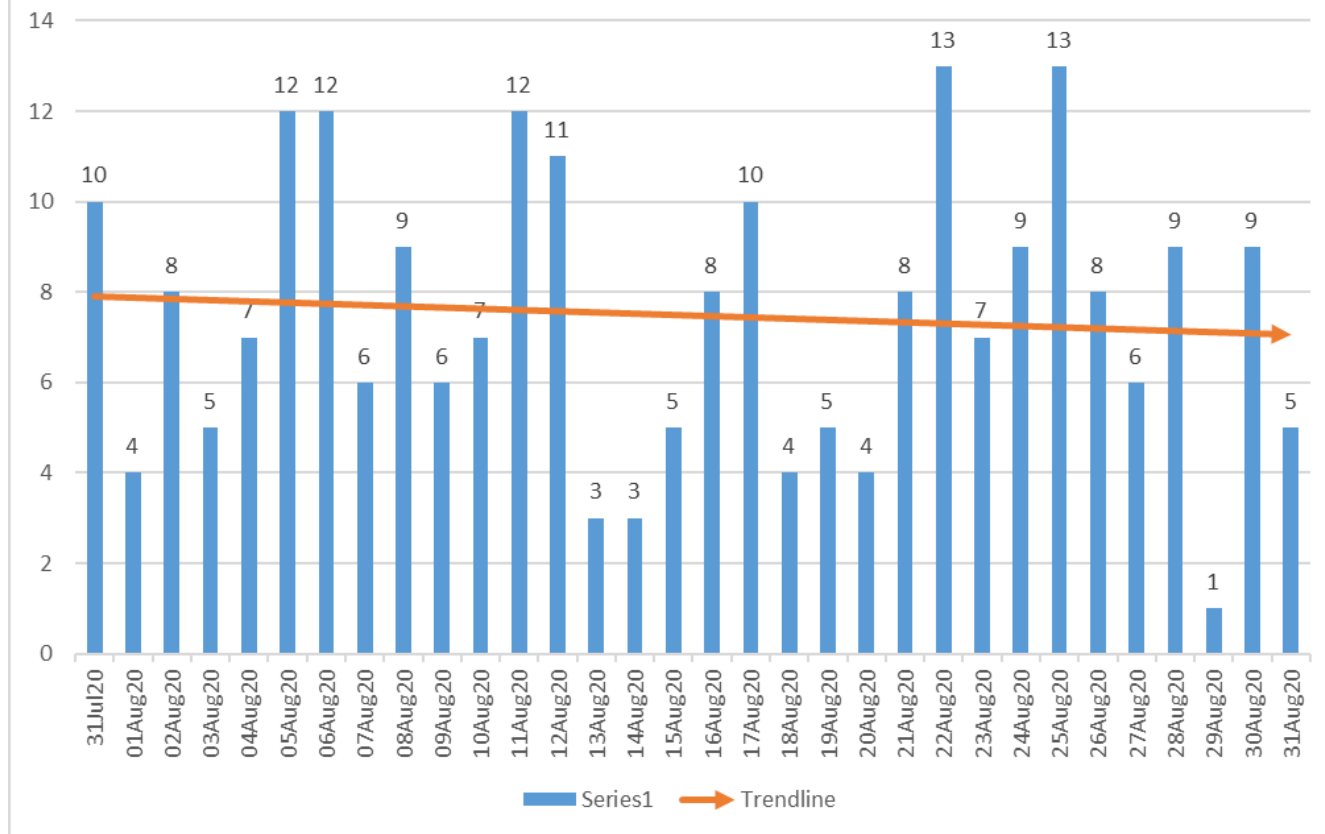
**30 Day COVID-19 Trends
for Oklahoma City-Metropolitan Area
July 31-August 31, 2020**

**Cumulative Case Counts and Deaths for Oklahoma County, Oklahoma, and the United States
As of September 01, 2020**

	Confirmed Cases	Deaths
Oklahoma County	13,566	154
Oklahoma	59,399	809
United States	6,030,587	183,597

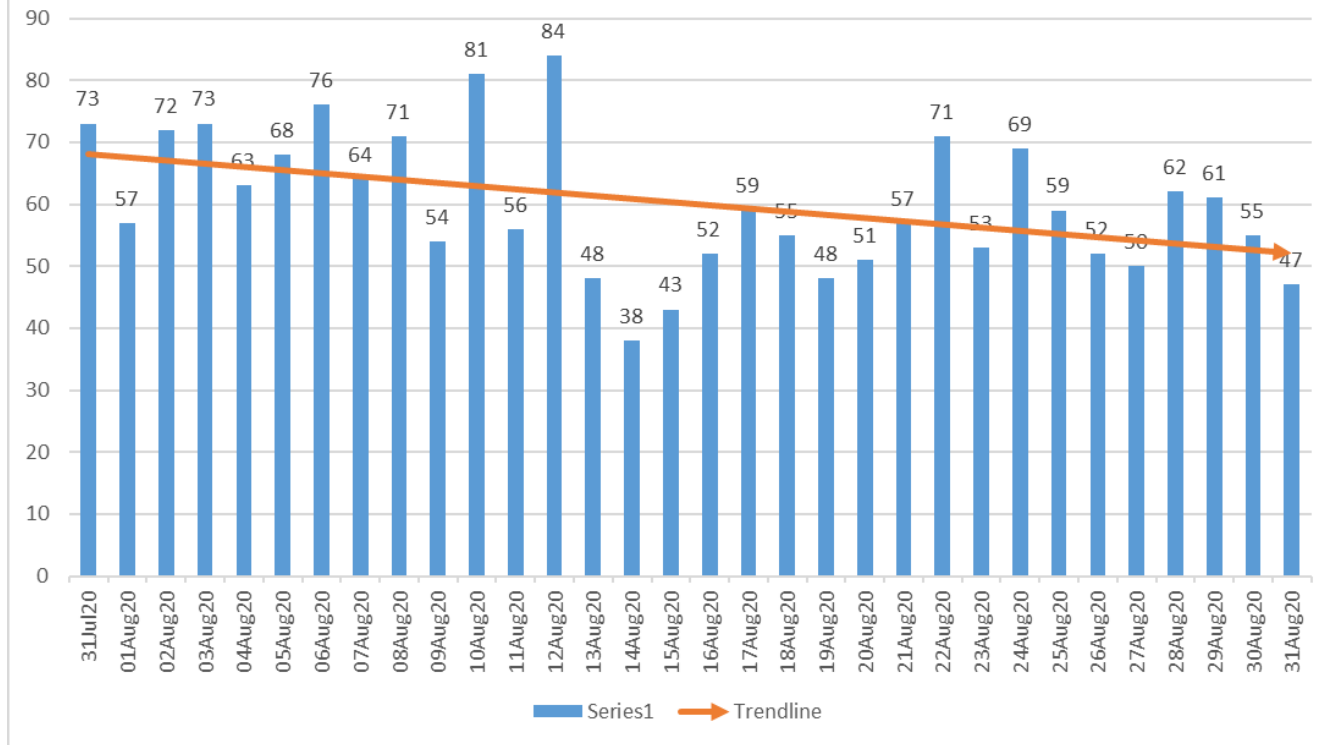


Oklahoma County Syndromic Surveillance of Influenza-like Illness(ILI) ED Visits July 31-Aug 31, 2020



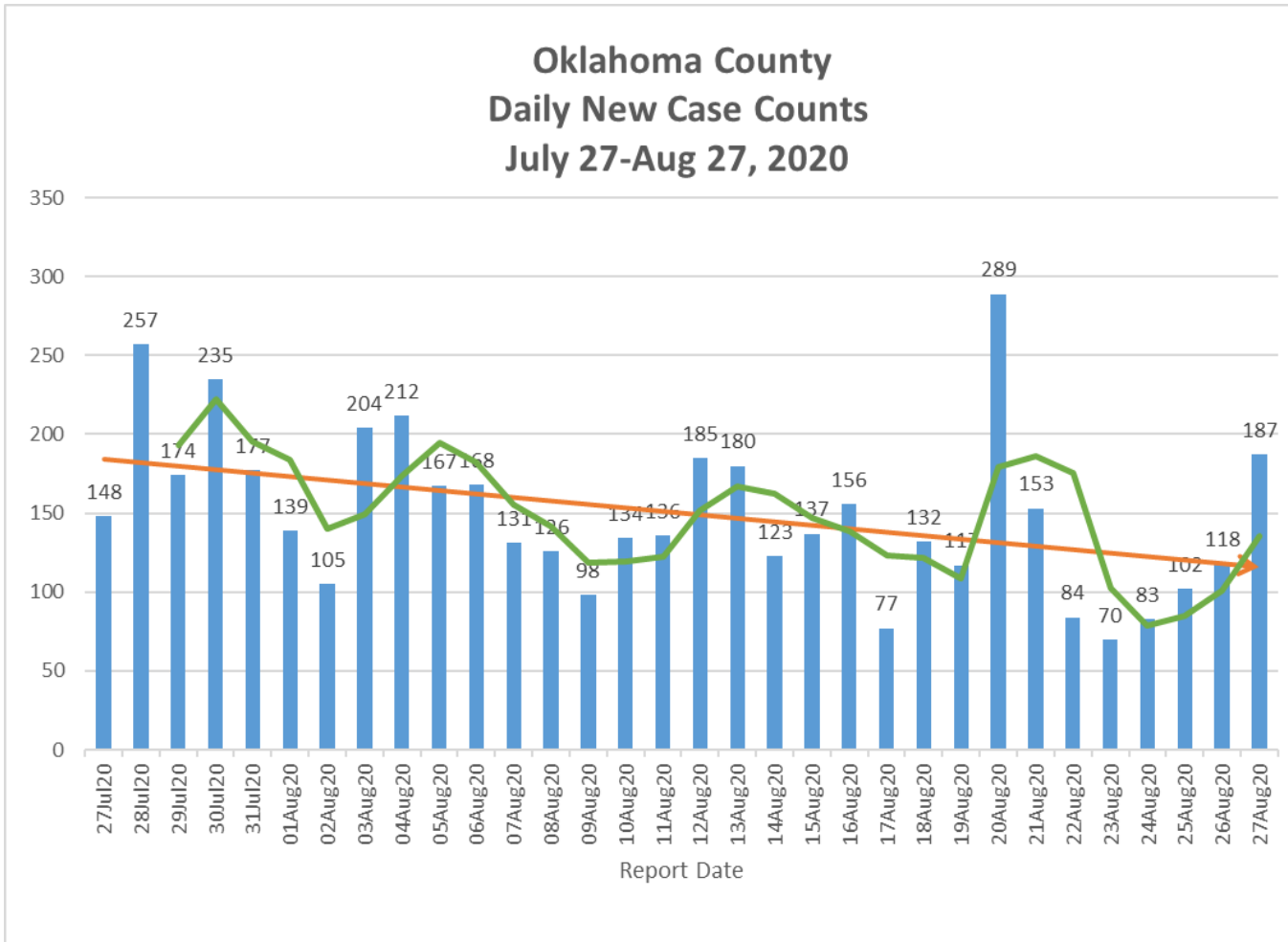


Oklahoma County Syndromic Surveillance of COVID-19 related ED Visits July 31-Aug 31, 2020



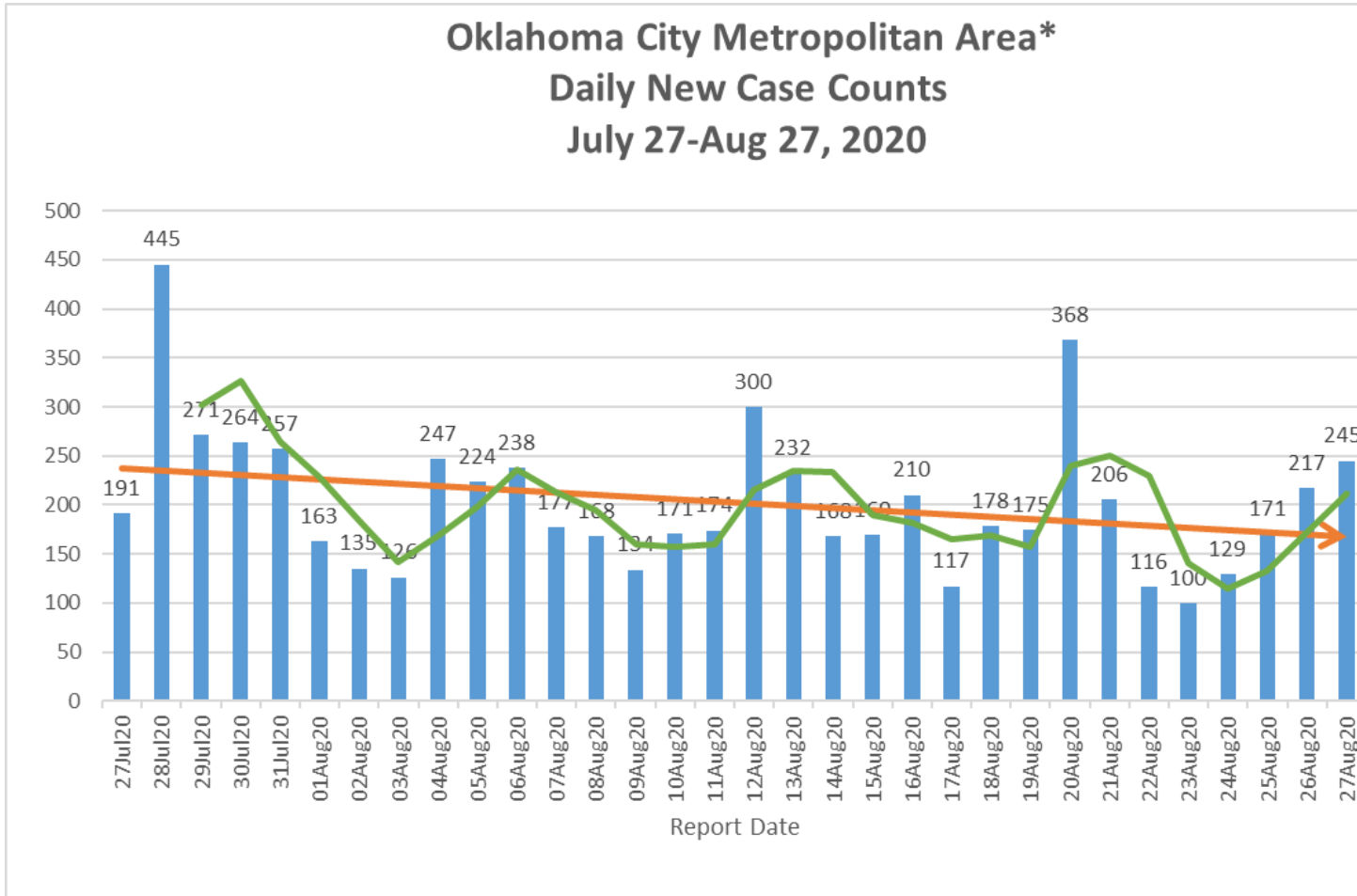


Oklahoma County Daily New Case Counts July 27-Aug 27, 2020





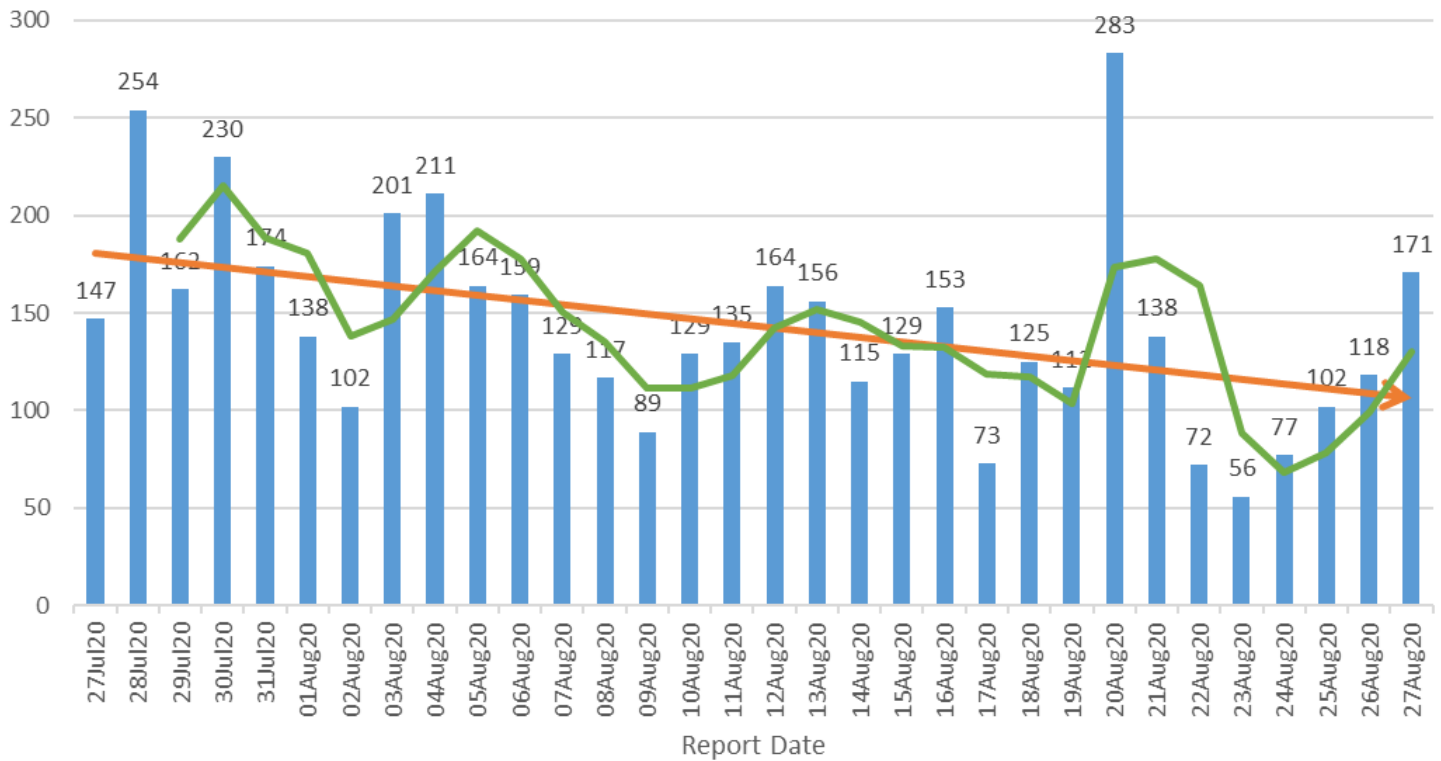
Oklahoma City Metropolitan Area* Daily New Case Counts July 27-Aug 27, 2020



*Includes daily new cases from Oklahoma, Cleveland, and Canadian Counties.

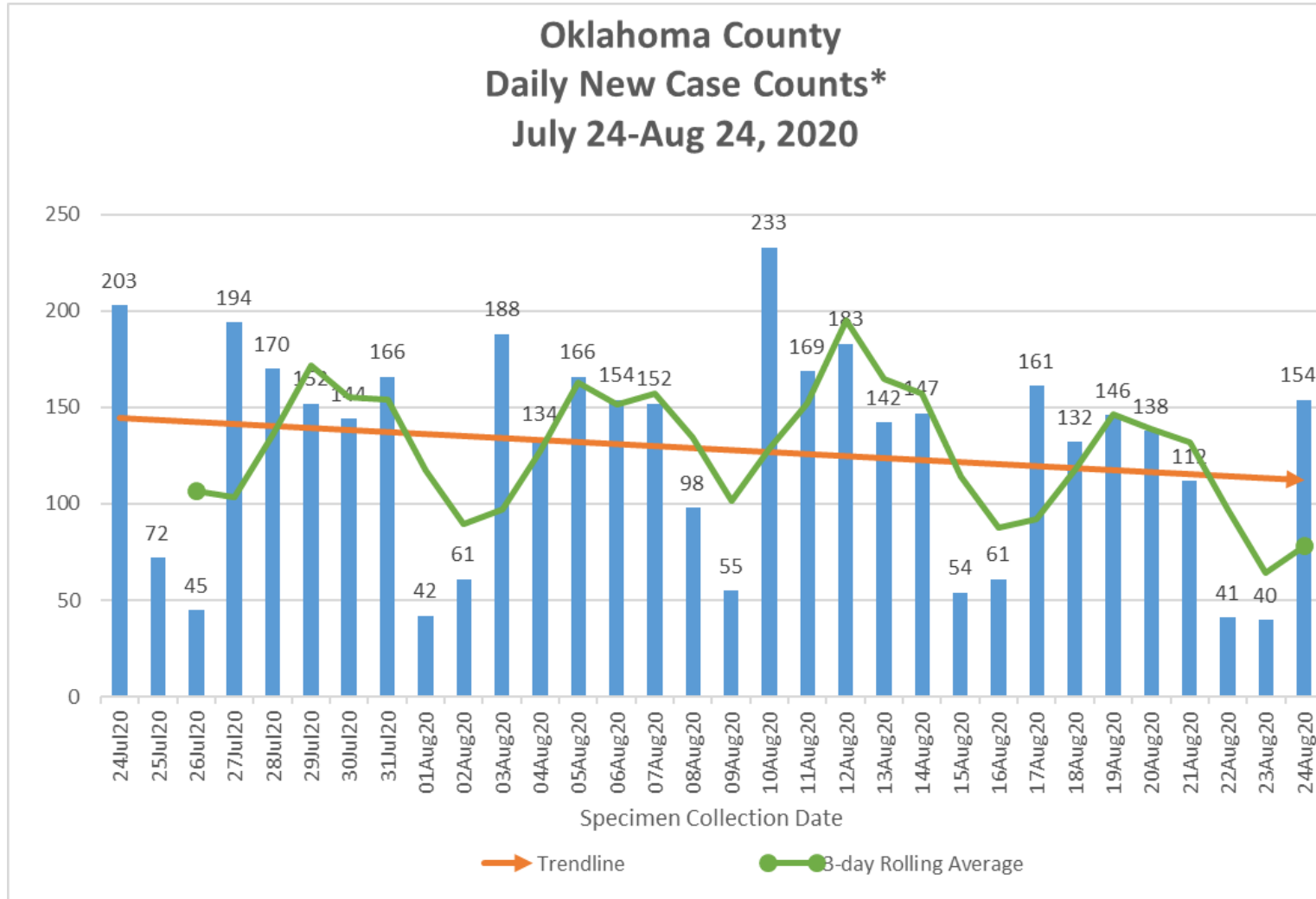


Oklahoma County Daily New Case Counts (excludes LTC cases) July 27-Aug 27, 2020





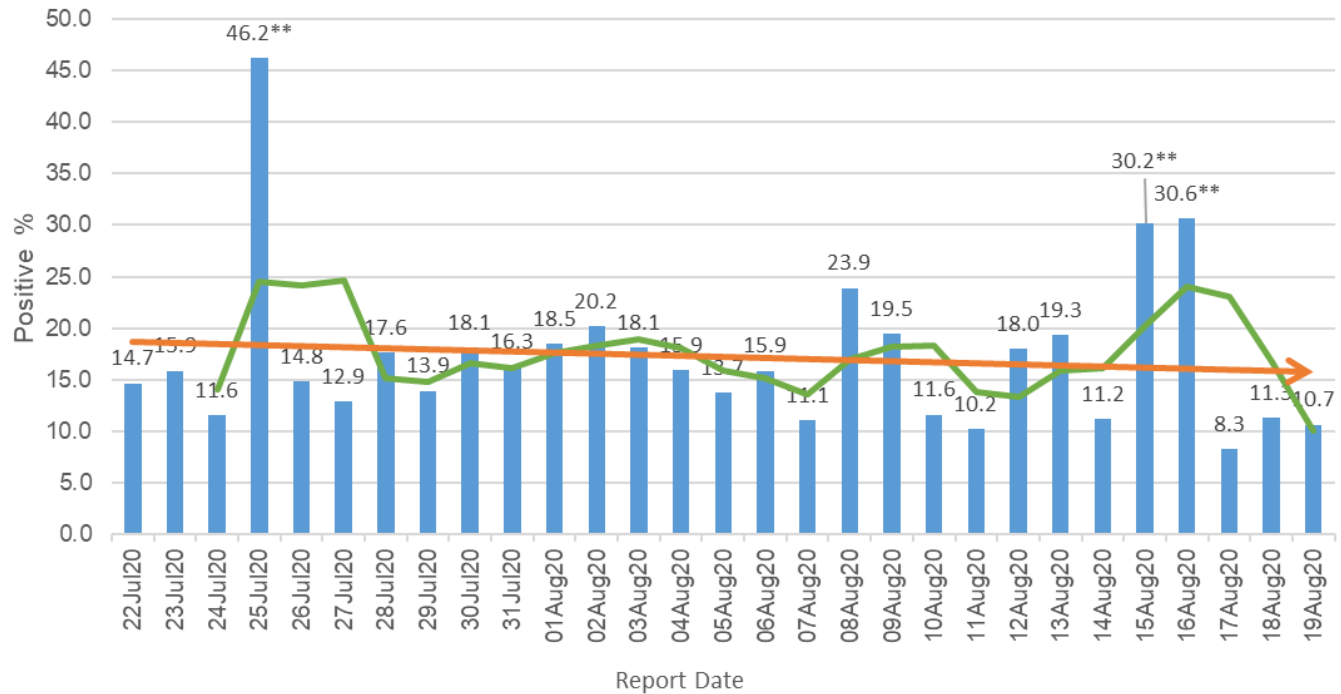
Oklahoma County Daily New Case Counts* July 24-Aug 24, 2020



*Case Counts by Specimen Collection Date



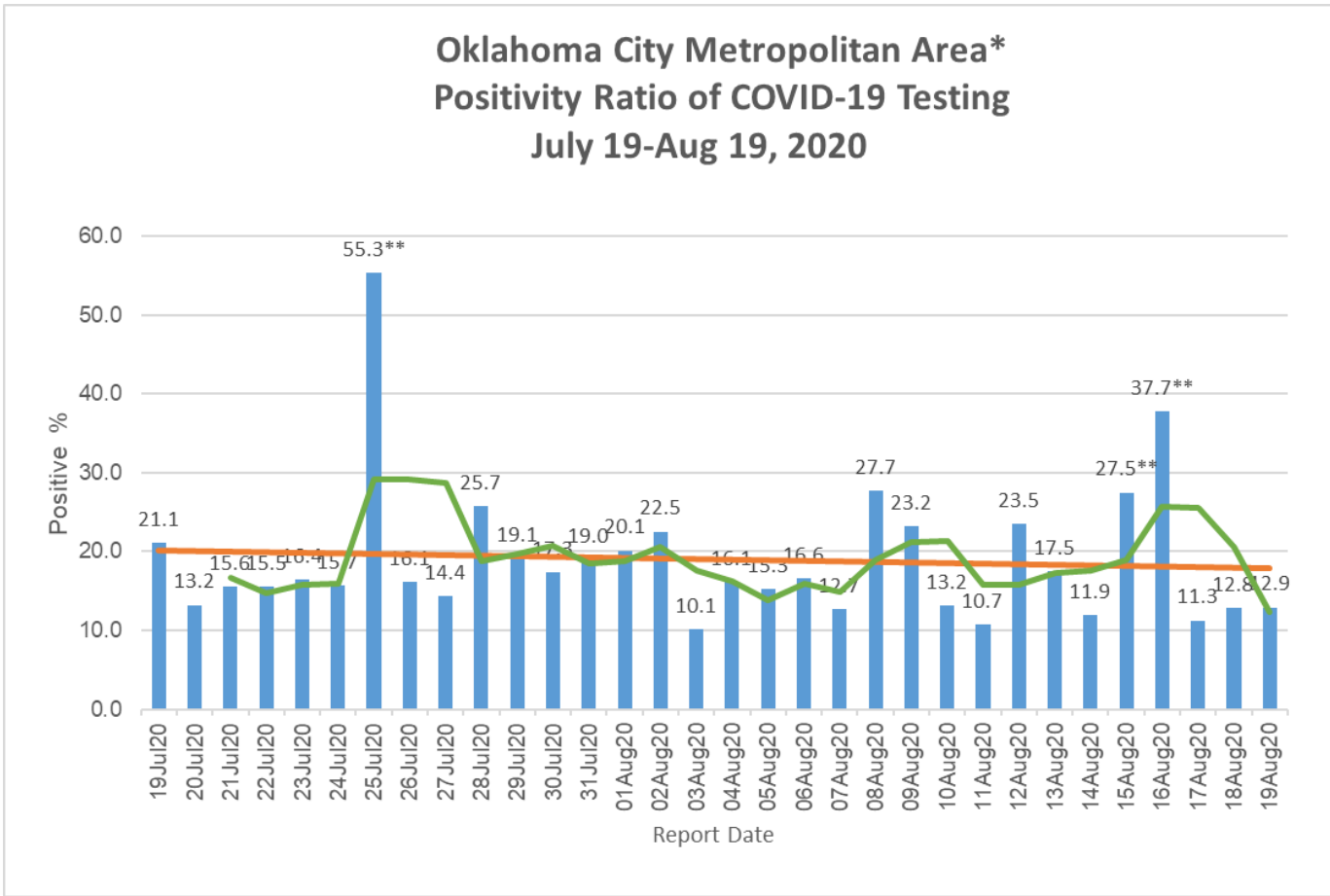
Oklahoma County Positivity Ratio of COVID-19 Testing July 19-Aug 19, 2020



**Outliers attributed to low number of total tests performed.



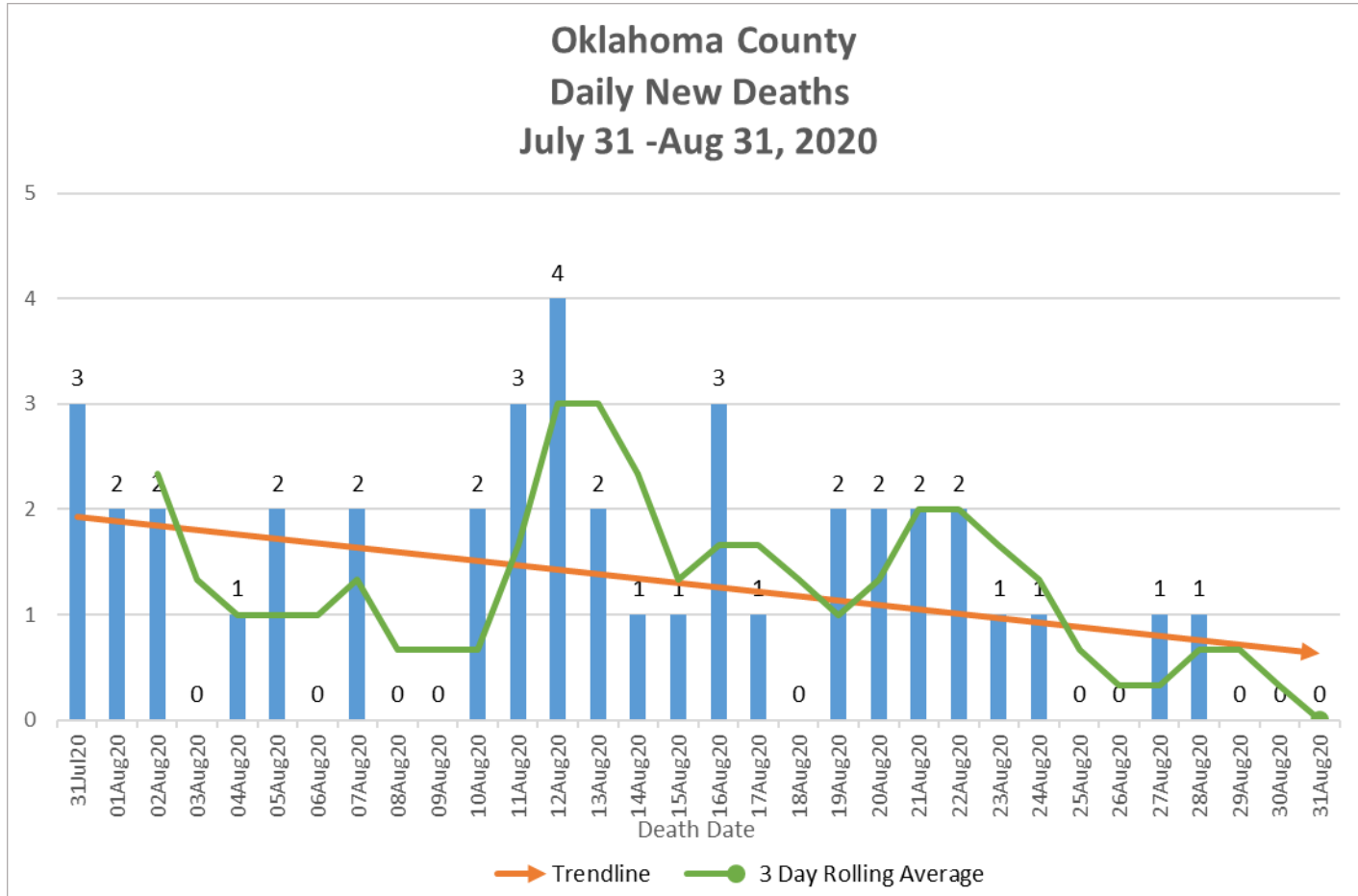
Oklahoma City Metropolitan Area* Positivity Ratio of COVID-19 Testing July 19-Aug 19, 2020



*Includes daily new positive results from Oklahoma, Cleveland, and Canadian Counties.

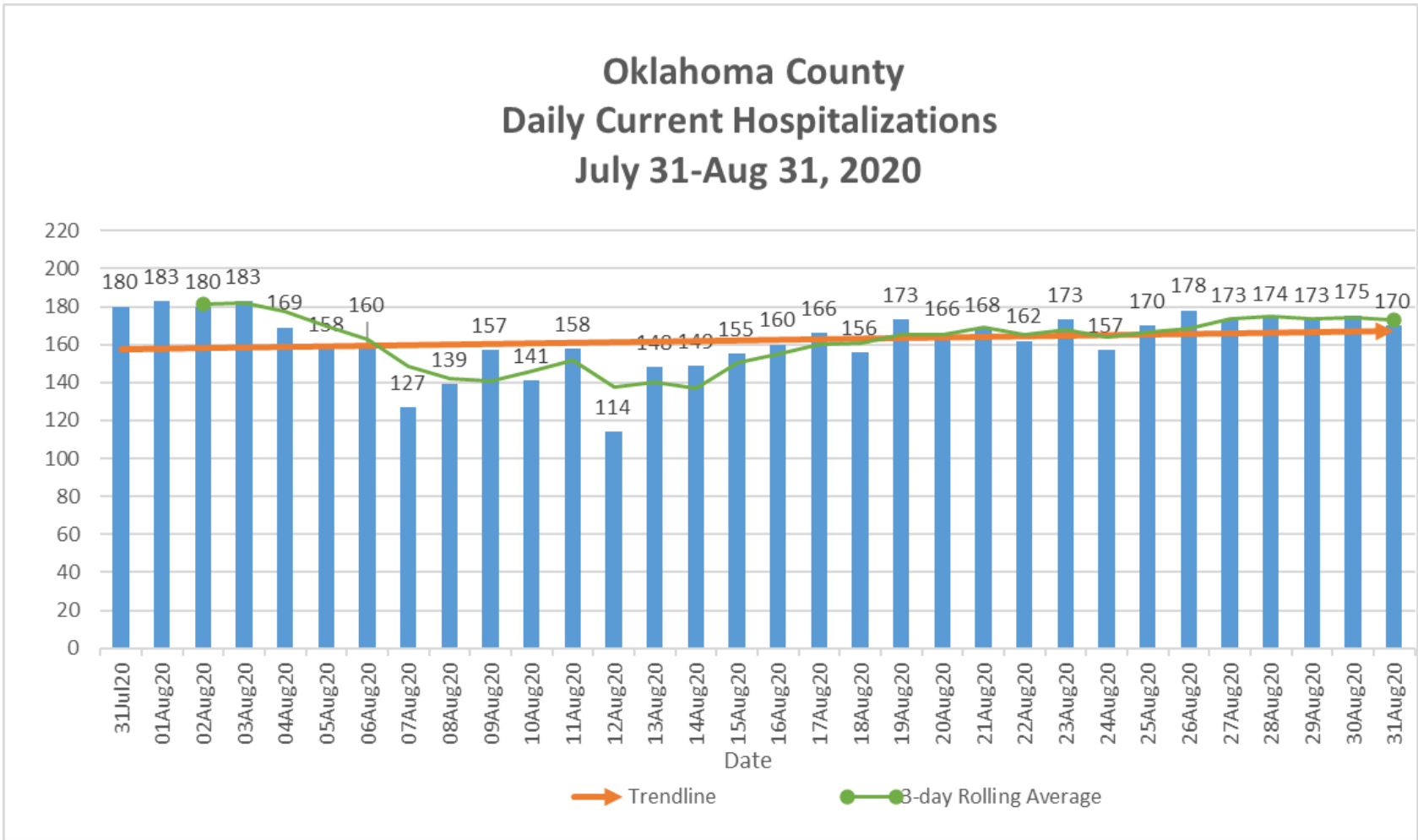
**Outliers attributed to low number of total tests performed.

Oklahoma County Daily New Deaths July 31 -Aug 31, 2020





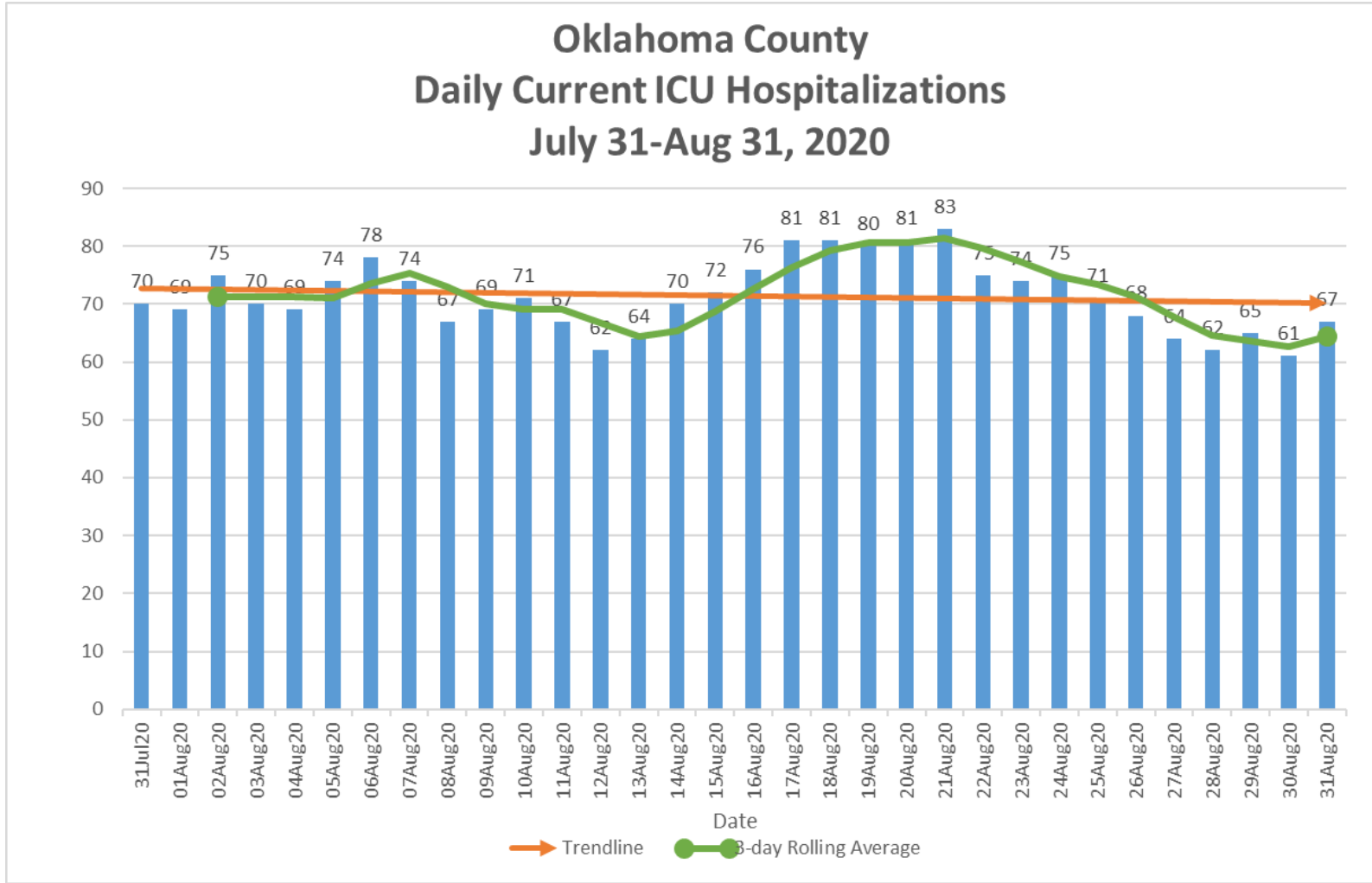
Oklahoma County Daily Current Hospitalizations July 31-Aug 31, 2020



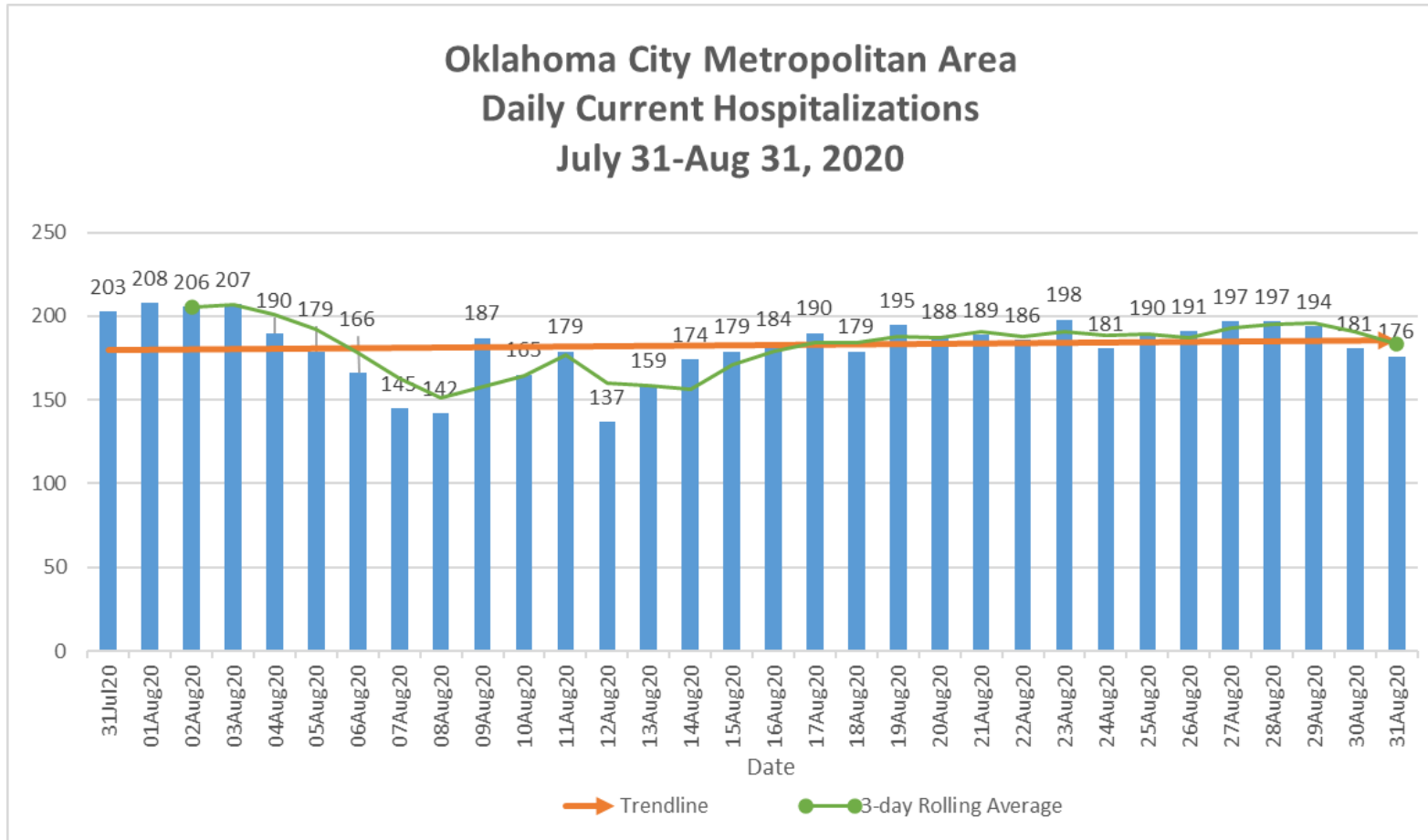
*Includes all COVID-19 hospitalizations in Oklahoma County Hospitals.



Oklahoma County Daily Current ICU Hospitalizations July 31-Aug 31, 2020



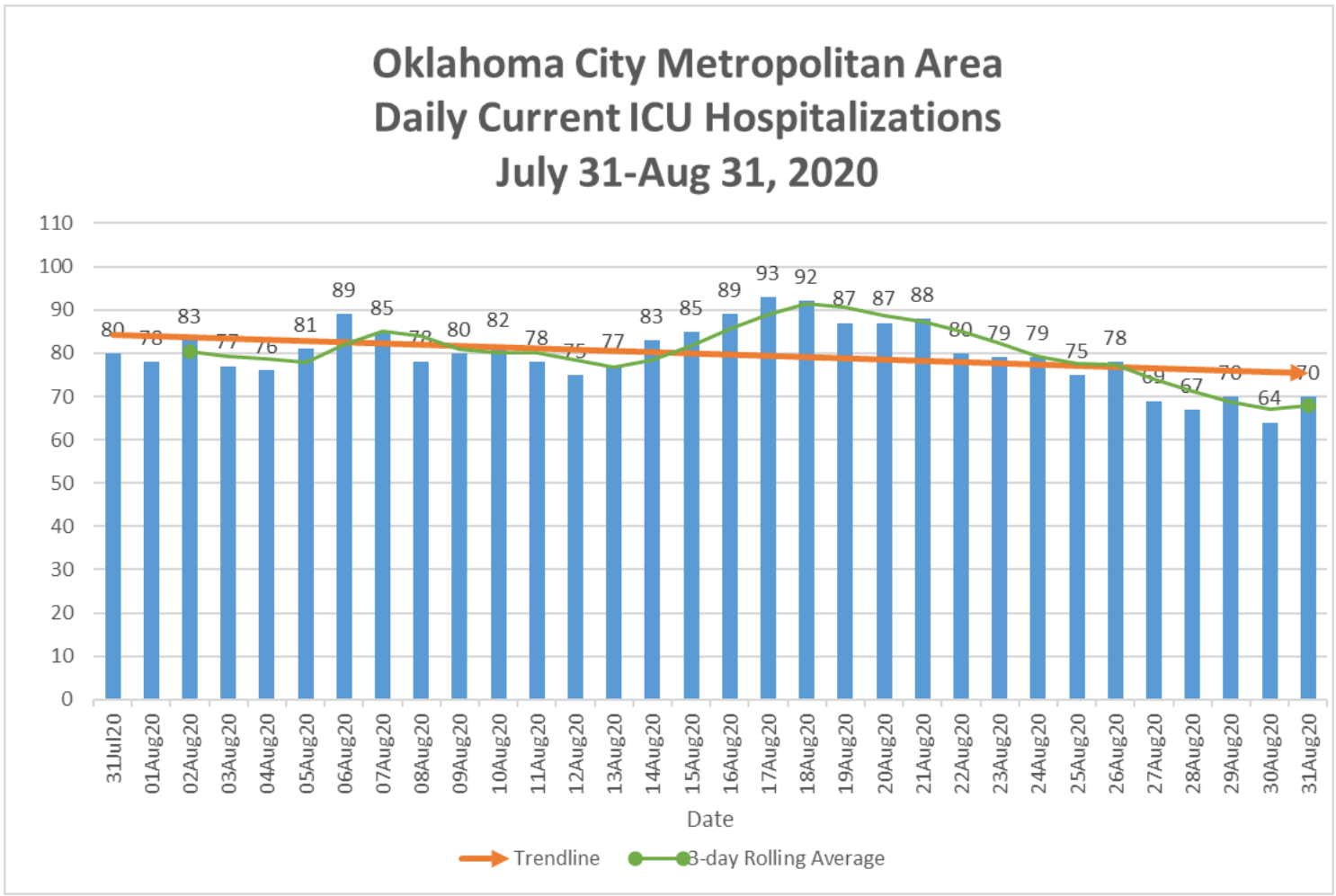
*Includes all COVID-19 ICU hospitalizations in Oklahoma County Hospitals.



*Includes all COVID-19 hospitalizations in Oklahoma, Cleveland and Canadian County hospitals.



Oklahoma City Metropolitan Area Daily Current ICU Hospitalizations July 31-Aug 31, 2020



*Includes all COVID-19 ICU hospitalizations in Oklahoma, Cleveland and Canadian County hospitals.