



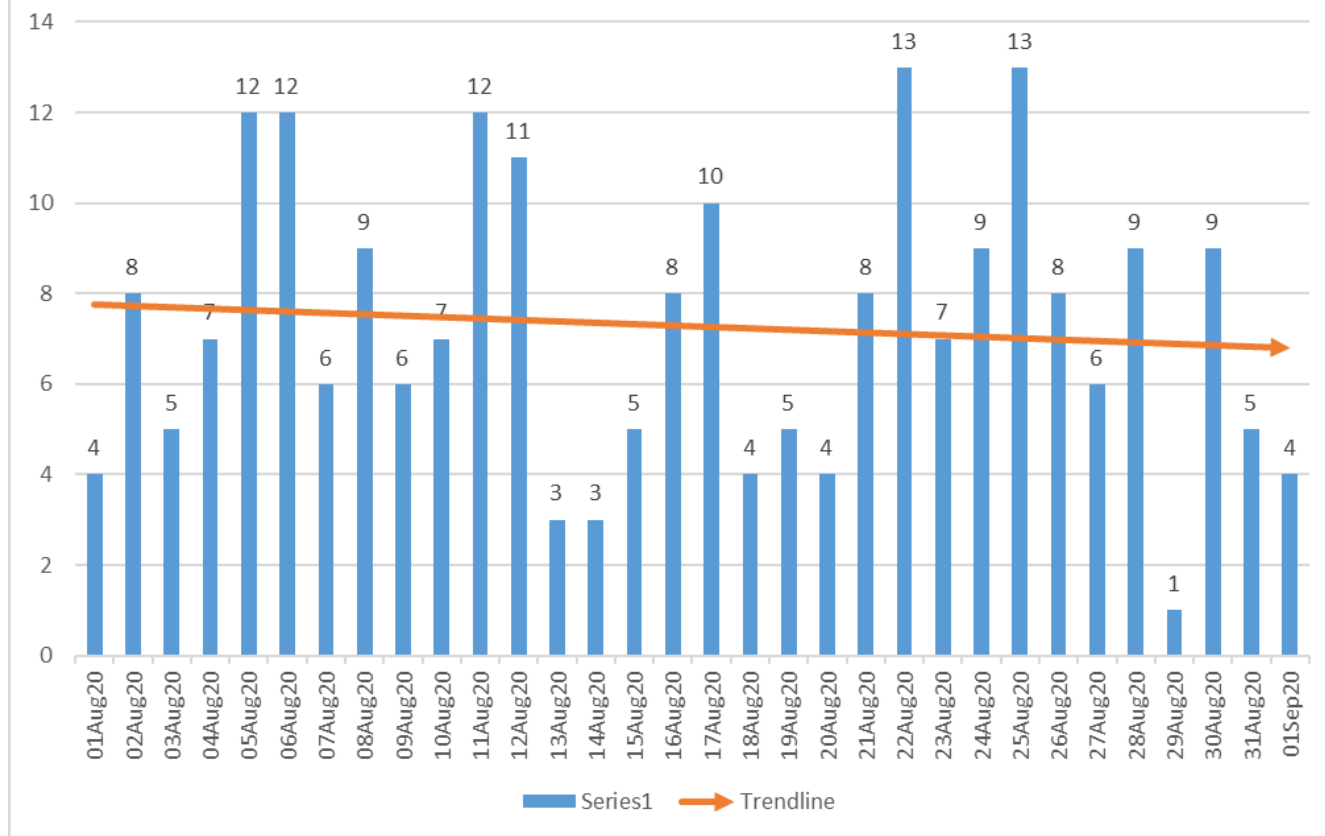
**30 Day COVID-19 Trends  
for Oklahoma City-Metropolitan Area  
August 01-September 01, 2020**

**Cumulative Case Counts and Deaths for Oklahoma County, Oklahoma, and the United States  
As of September 02, 2020**

	<b>Confirmed Cases</b>	<b>Deaths</b>
Oklahoma County	13,689	156
Oklahoma	60,118	821
United States	6,073,840	184,664

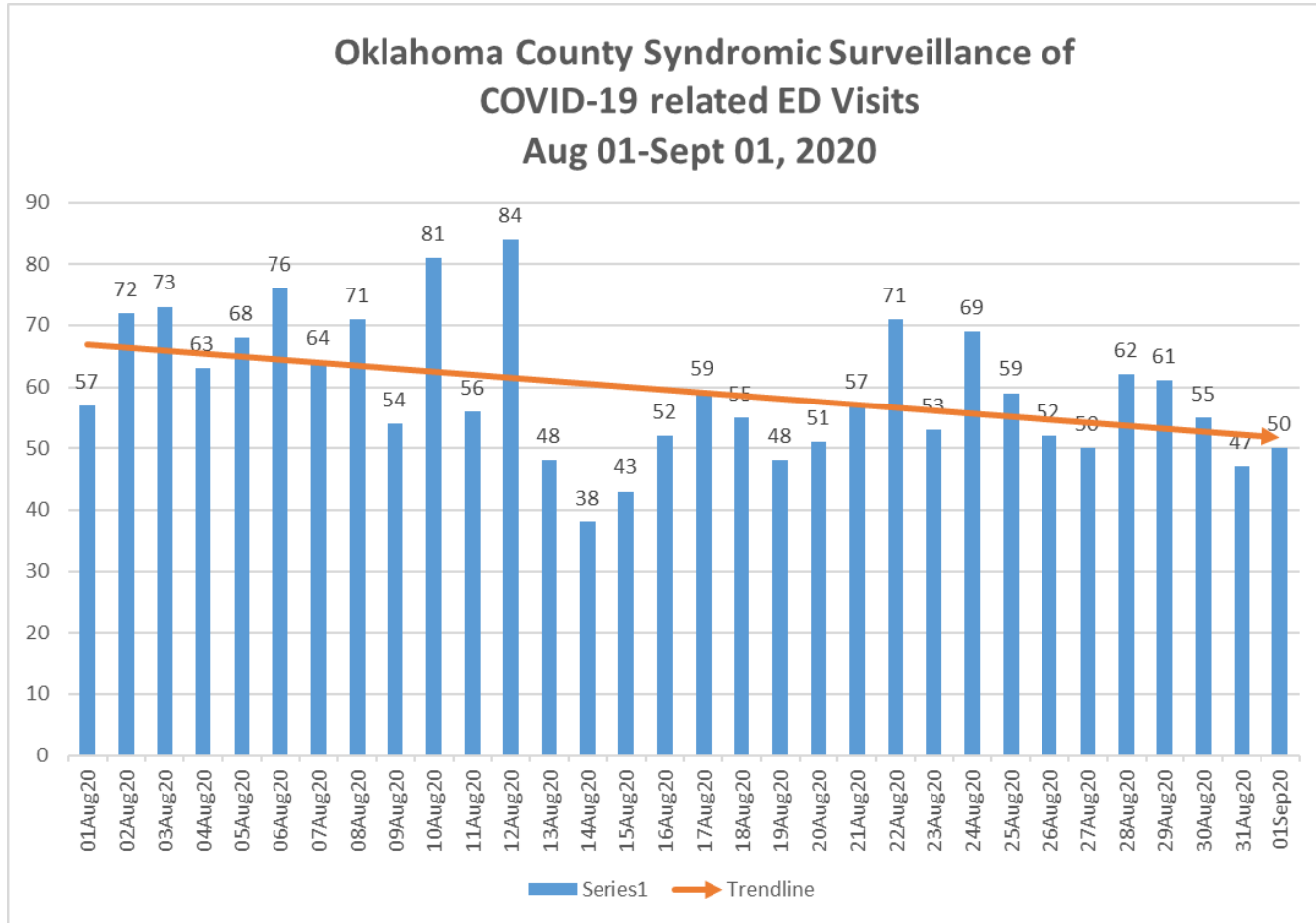


### Oklahoma County Syndromic Surveillance of Influenza-like Illness(ILI) ED Visits Aug 01-Sept 01, 2020



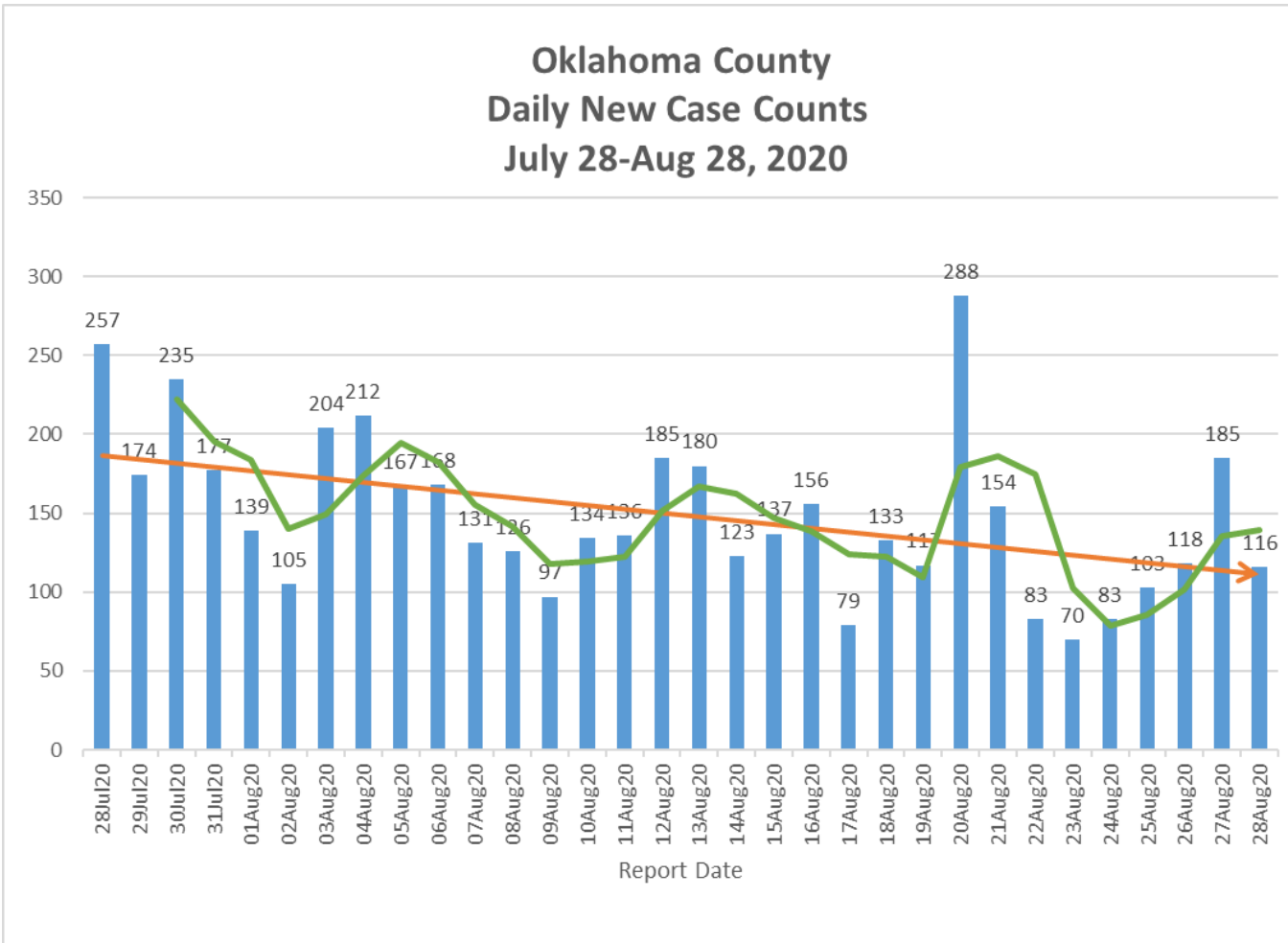


### Oklahoma County Syndromic Surveillance of COVID-19 related ED Visits Aug 01-Sept 01, 2020



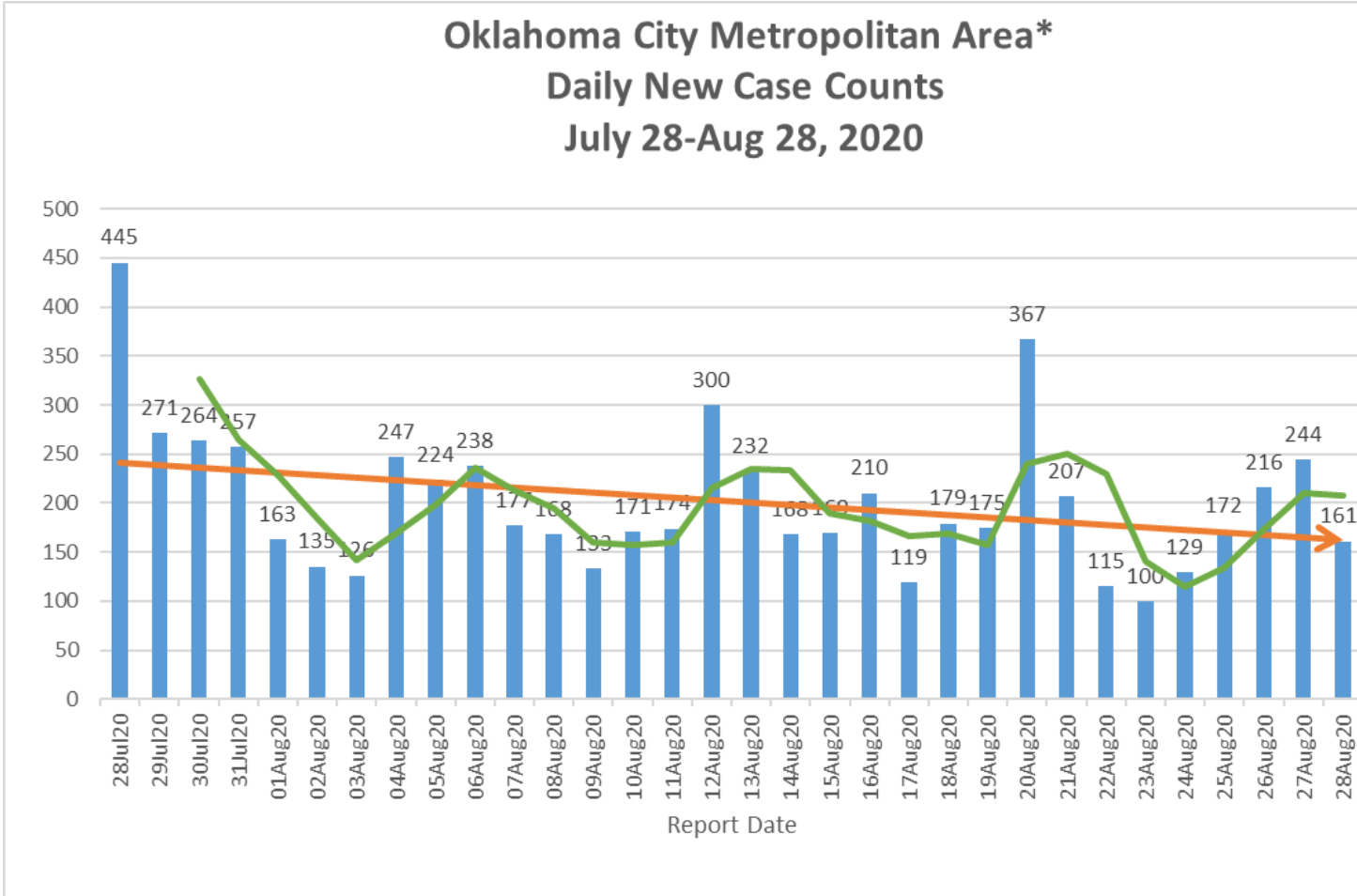


### Oklahoma County Daily New Case Counts July 28-Aug 28, 2020





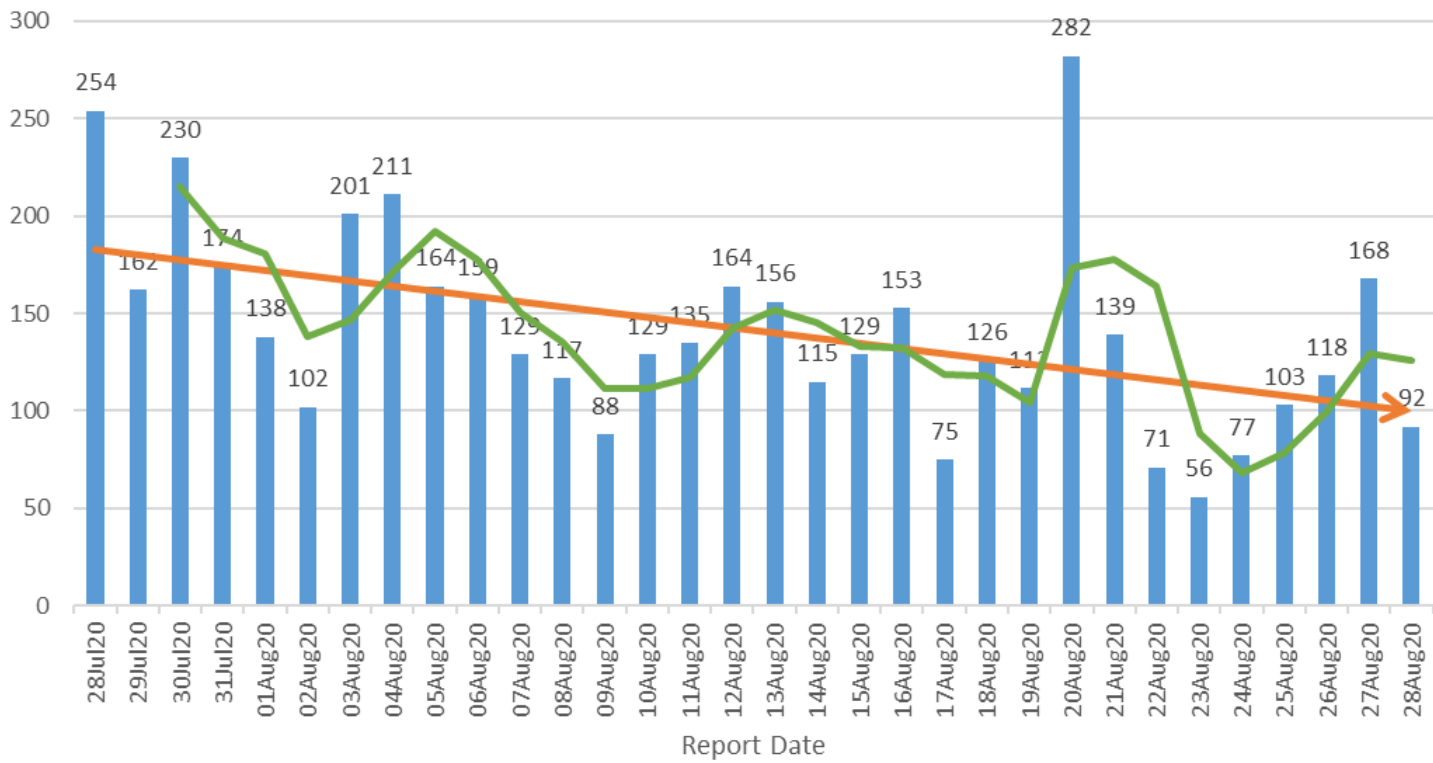
### Oklahoma City Metropolitan Area\* Daily New Case Counts July 28-Aug 28, 2020



\*Includes daily new cases from Oklahoma, Cleveland, and Canadian Counties.

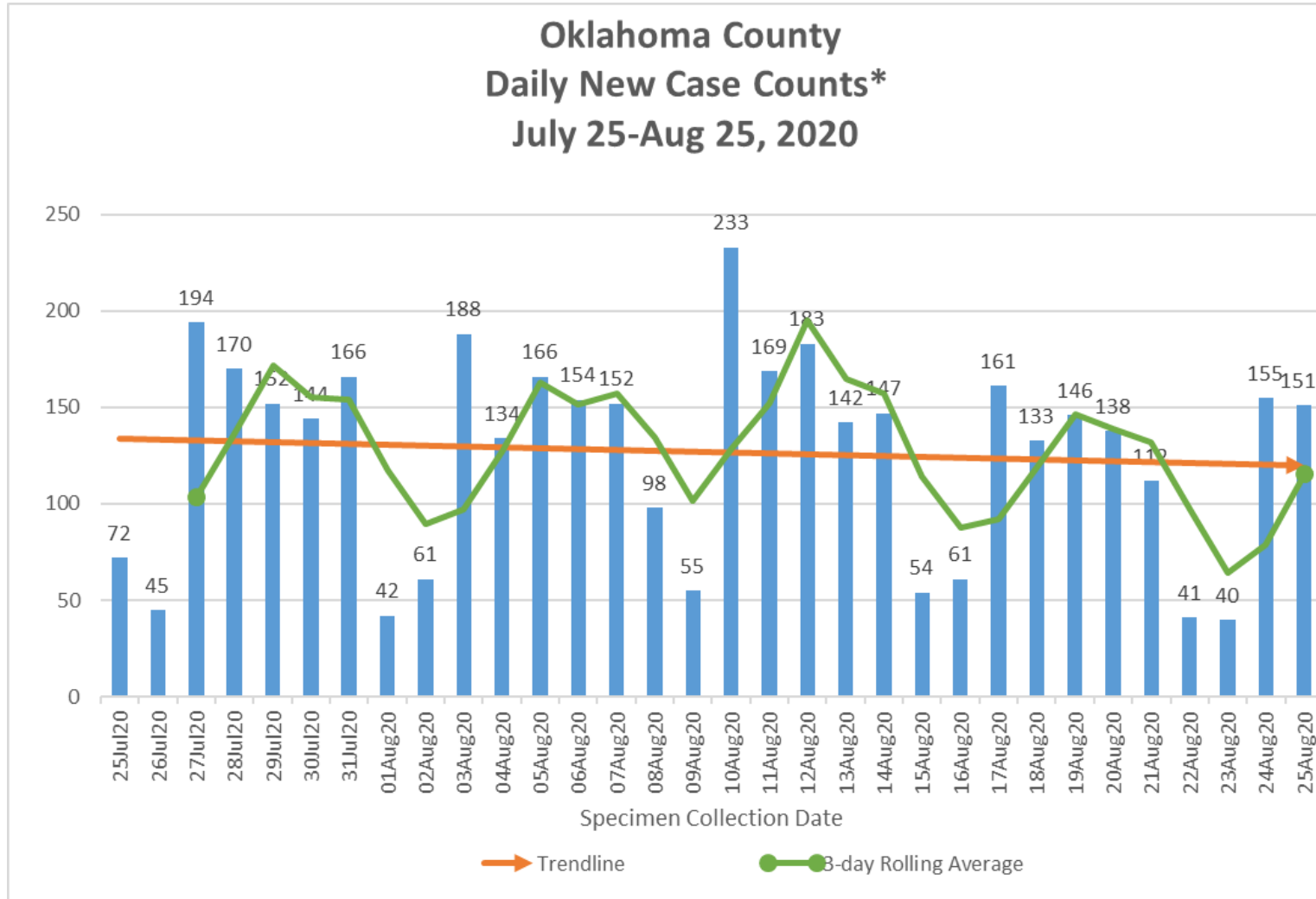


### Oklahoma County Daily New Case Counts (excludes LTC cases) July 28-Aug 28, 2020





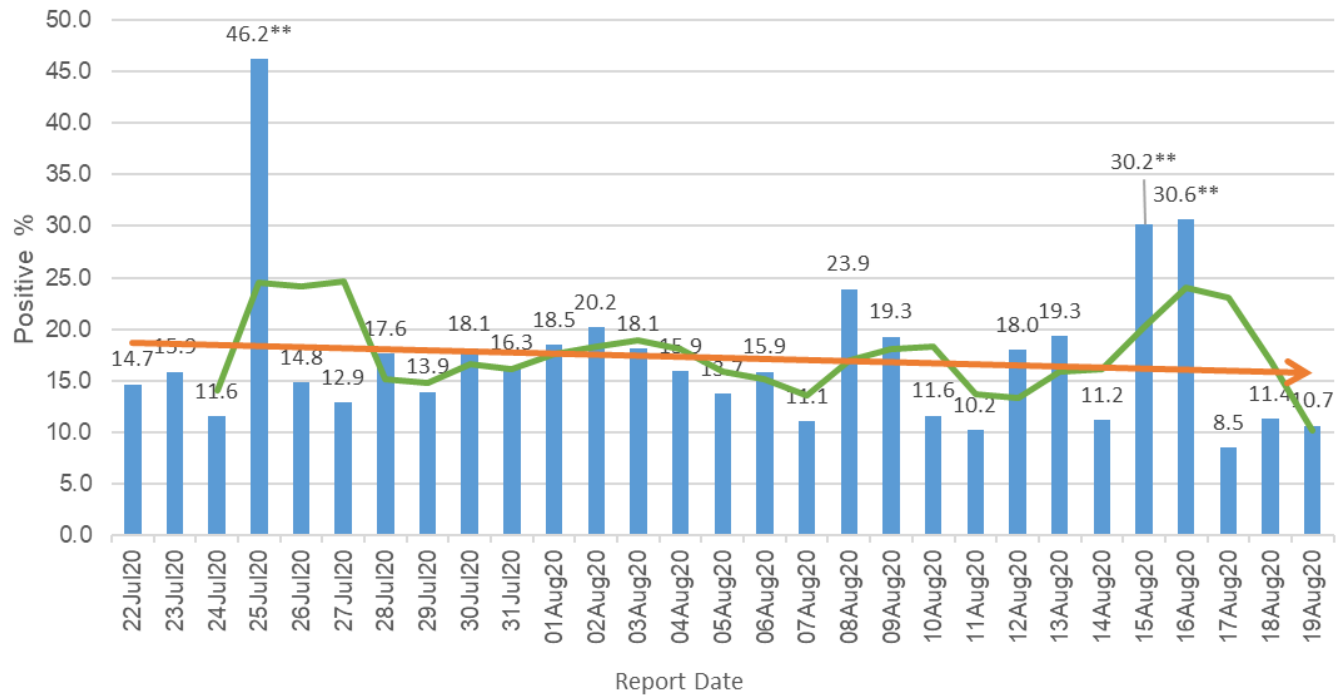
### Oklahoma County Daily New Case Counts\* July 25-Aug 25, 2020



\*Case Counts by Specimen Collection Date



### Oklahoma County Positivity Ratio of COVID-19 Testing July 19-Aug 19, 2020

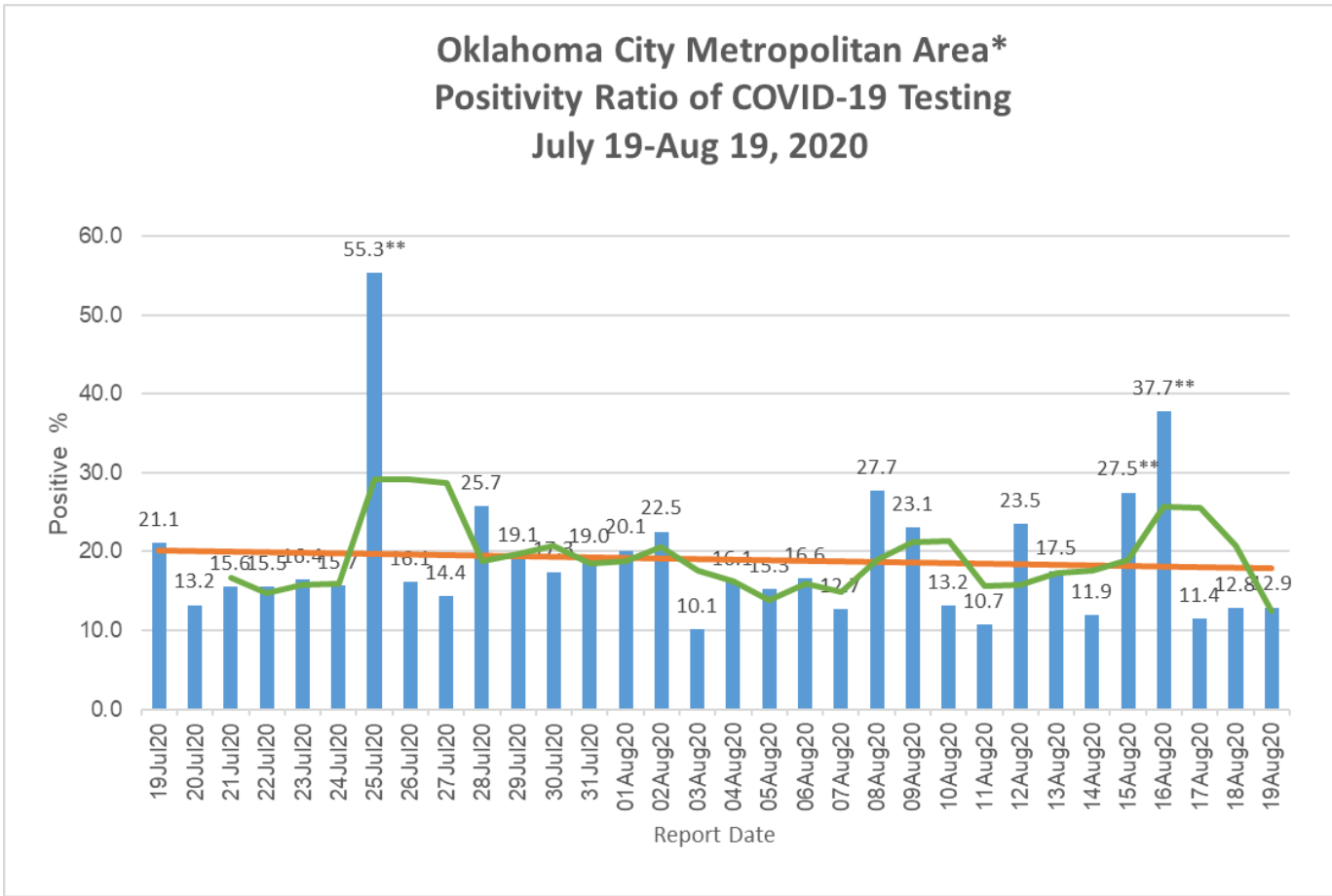


\*\*Outliers attributed to low number of total tests performed.





### Oklahoma City Metropolitan Area\* Positivity Ratio of COVID-19 Testing July 19-Aug 19, 2020

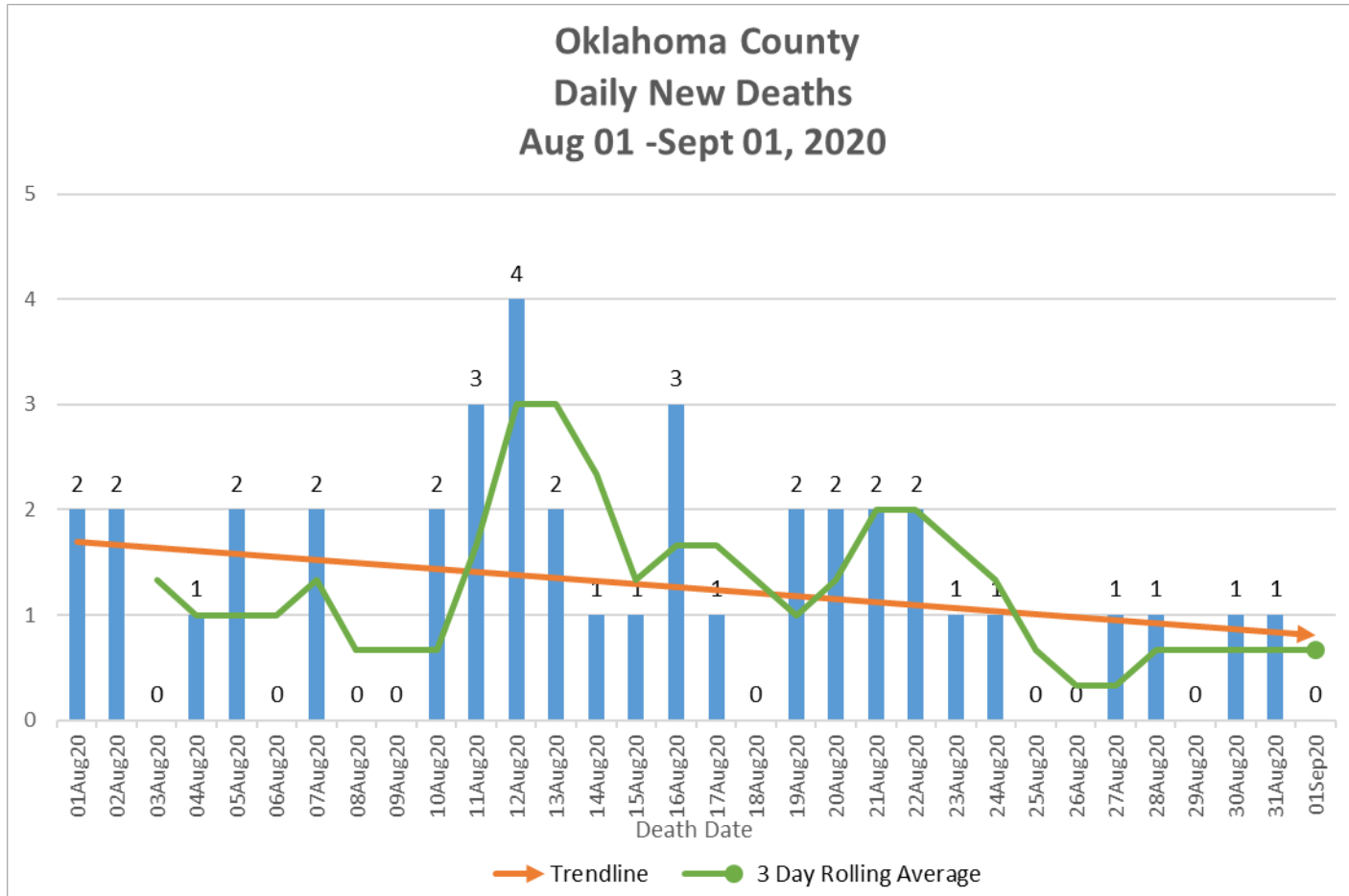


\*Includes daily new positive results from Oklahoma, Cleveland, and Canadian Counties.

\*\*Outliers attributed to low number of total tests performed.

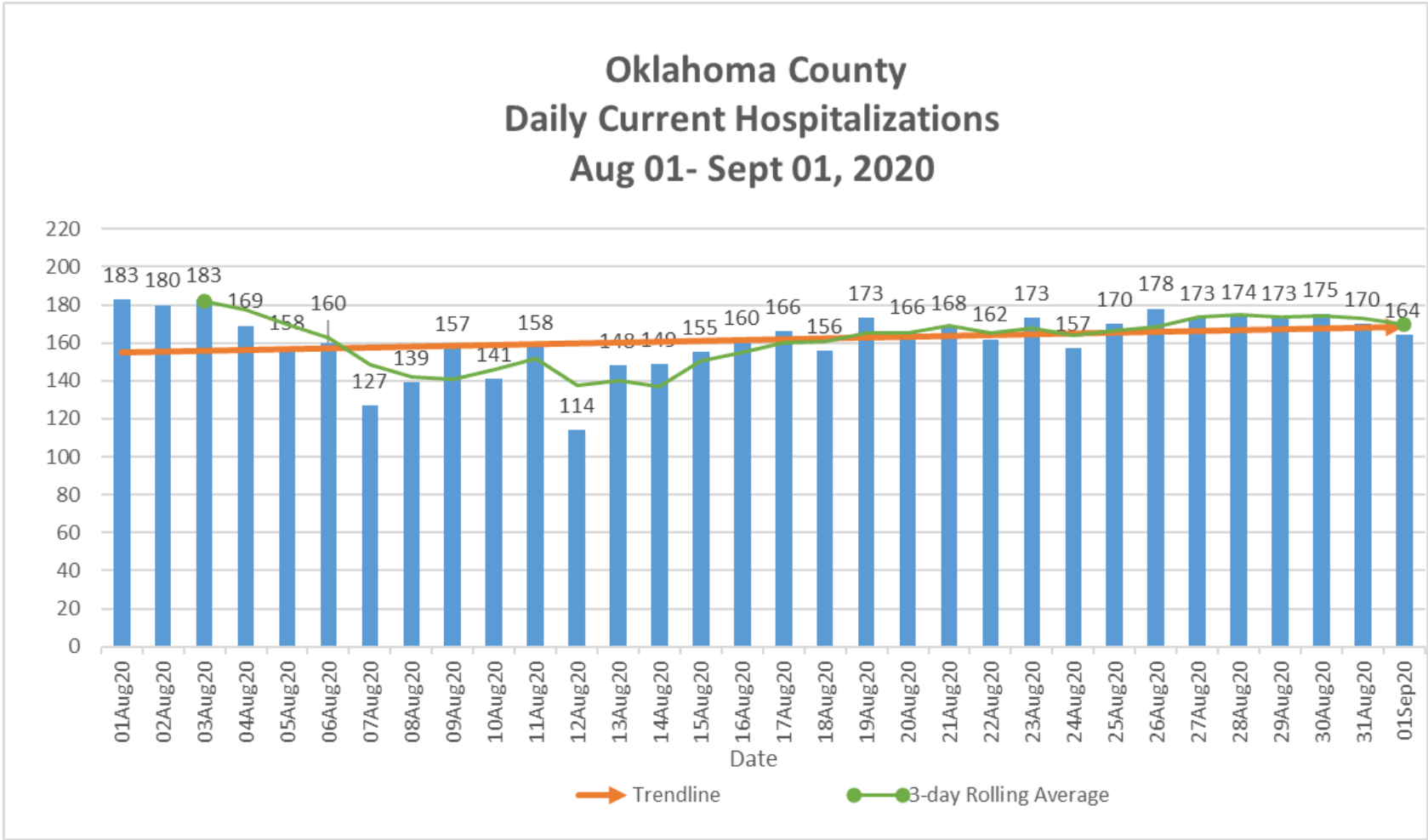


### Oklahoma County Daily New Deaths Aug 01 -Sept 01, 2020





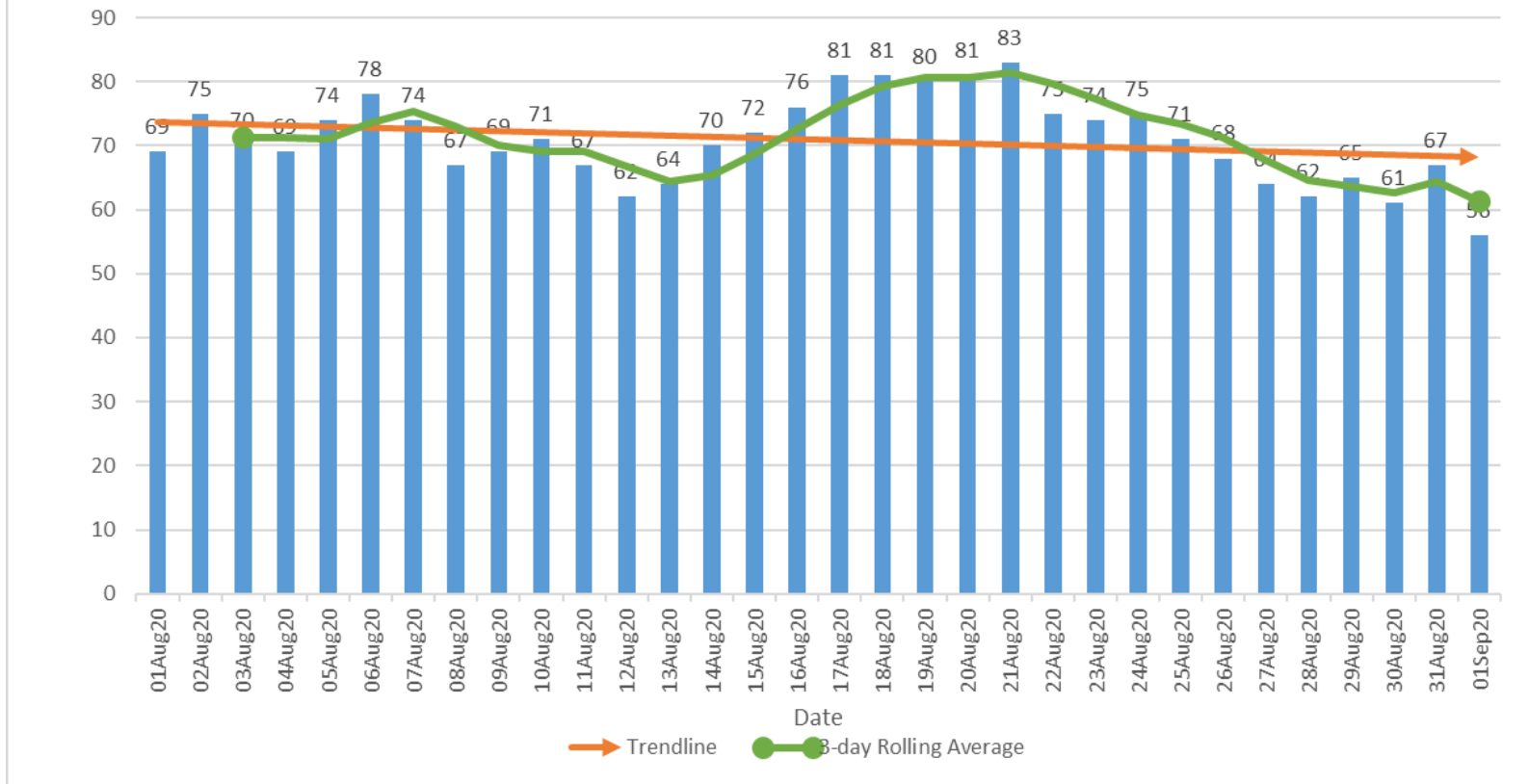
### Oklahoma County Daily Current Hospitalizations Aug 01- Sept 01, 2020



\*Includes all COVID-19 hospitalizations in Oklahoma County Hospitals.



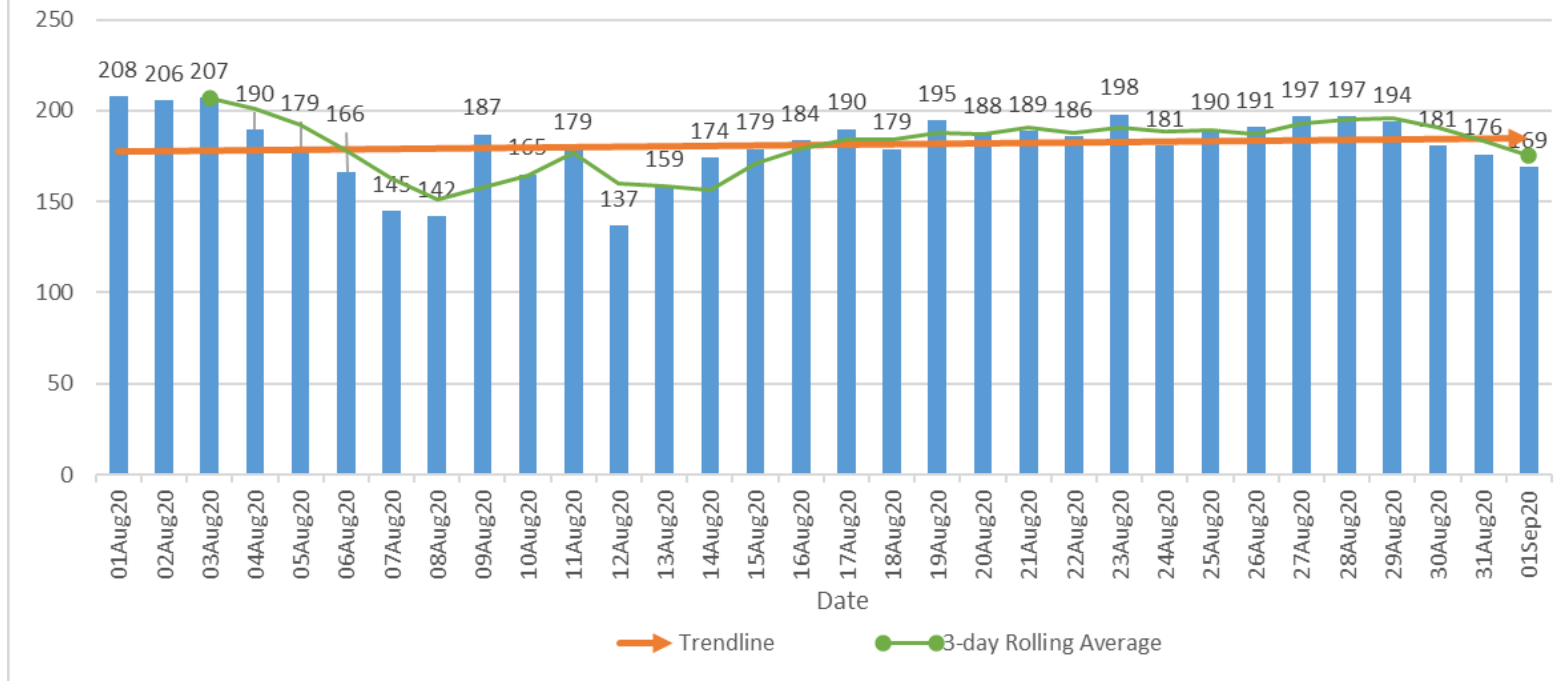
### Oklahoma County Daily Current ICU Hospitalizations Aug 01- Sept 01, 2020



\*Includes all COVID-19 ICU hospitalizations in Oklahoma County Hospitals.



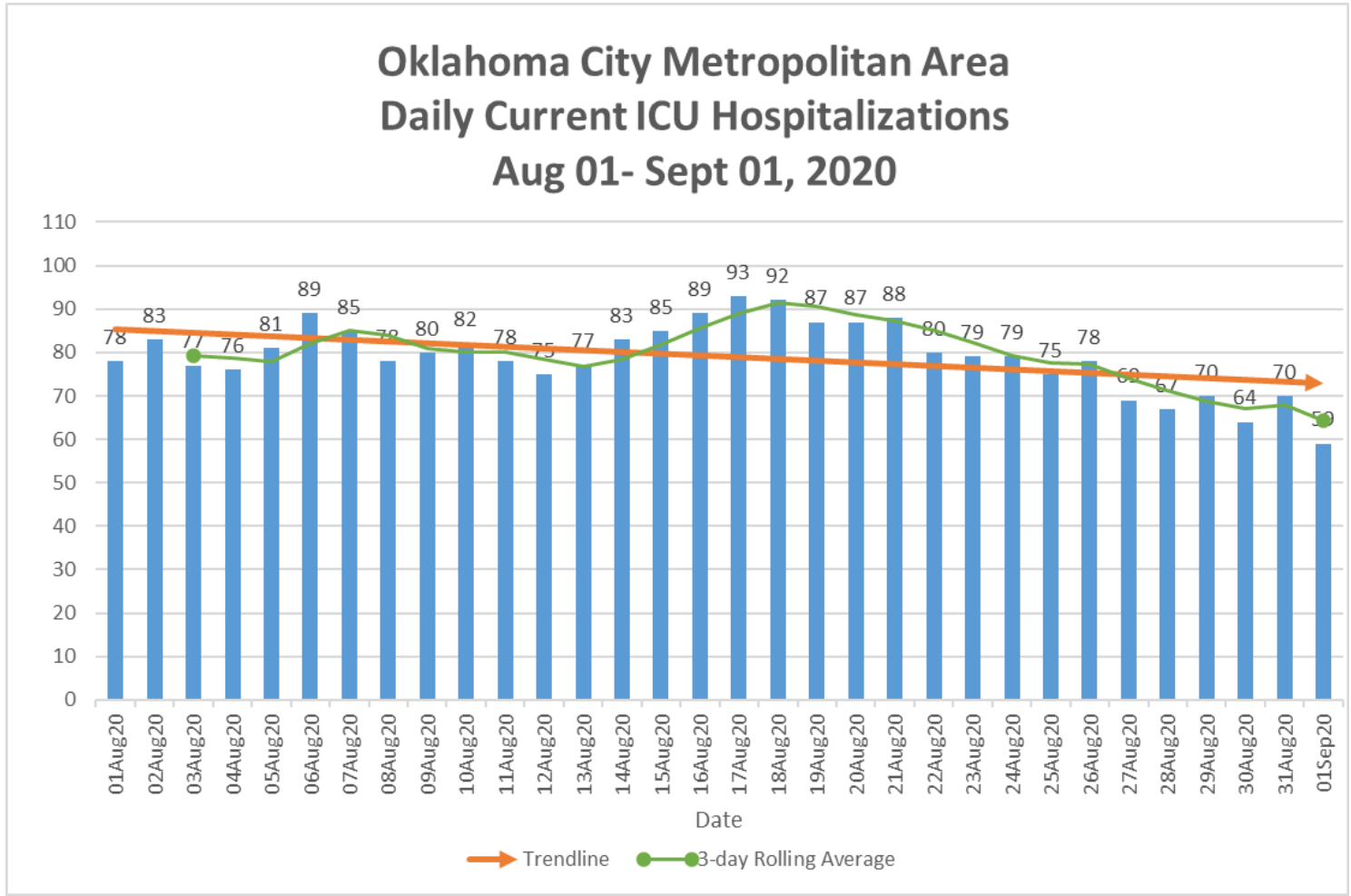
### Oklahoma City Metropolitan Area Daily Current Hospitalizations Aug 01-Sept 01, 2020



\*Includes all COVID-19 hospitalizations in Oklahoma, Cleveland and Canadian County hospitals.



### Oklahoma City Metropolitan Area Daily Current ICU Hospitalizations Aug 01- Sept 01, 2020



\*Includes all COVID-19 ICU hospitalizations in Oklahoma, Cleveland and Canadian County hospitals.