



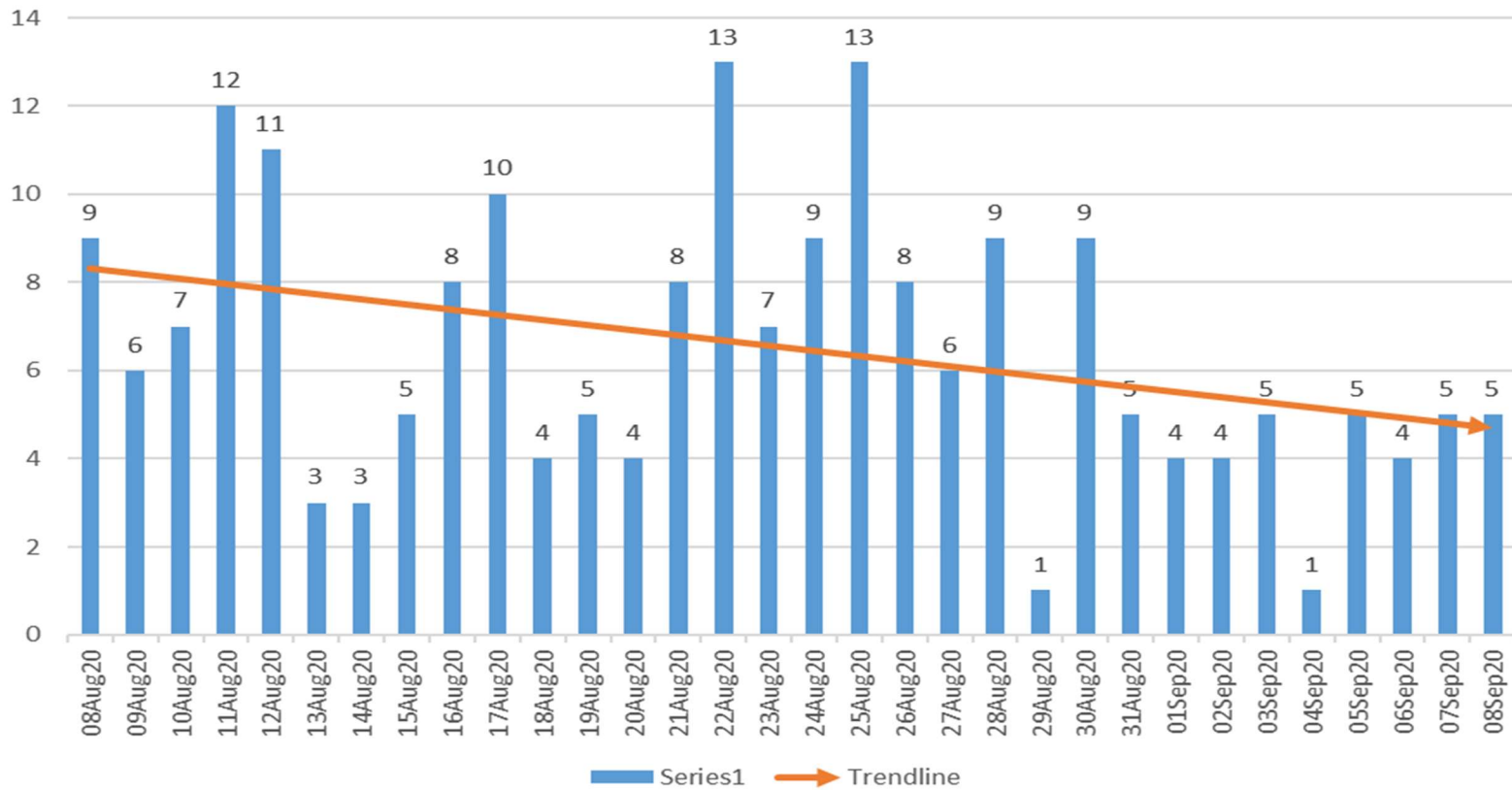
**30 Day COVID-19 Trends
for Oklahoma City-Metropolitan Area
August 08-September 08, 2020**

**Cumulative Case Counts and Deaths for Oklahoma County, Oklahoma, and the United States
As of September 09, 2020**

	Confirmed Cases	Deaths
Oklahoma County	14,543	168
Oklahoma	65,929	863
United States	6,327,009	189,653

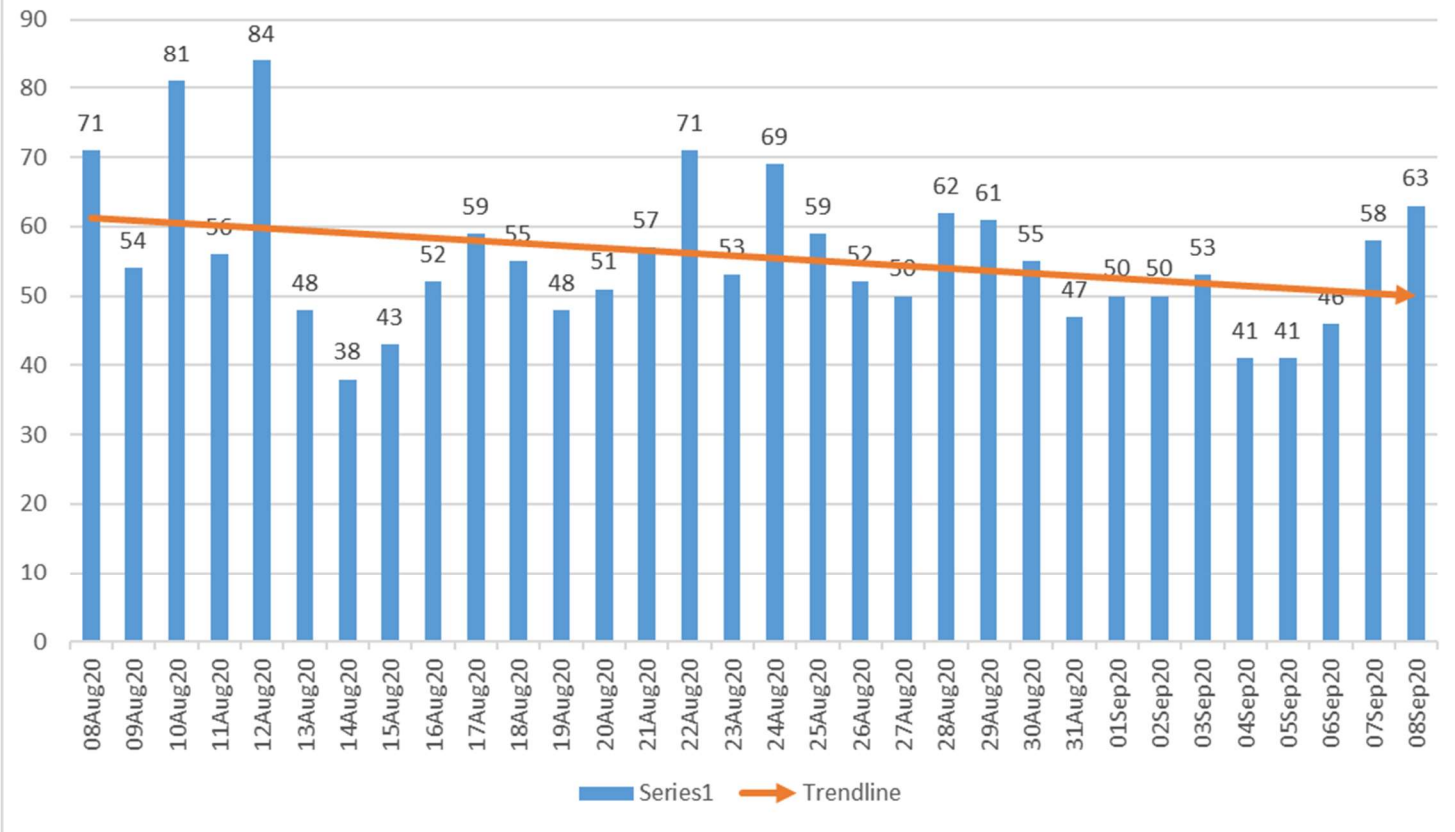


Oklahoma County Syndromic Surveillance of Influenza-like Illness(ILI) ED Visits Aug 08-Sept 08, 2020



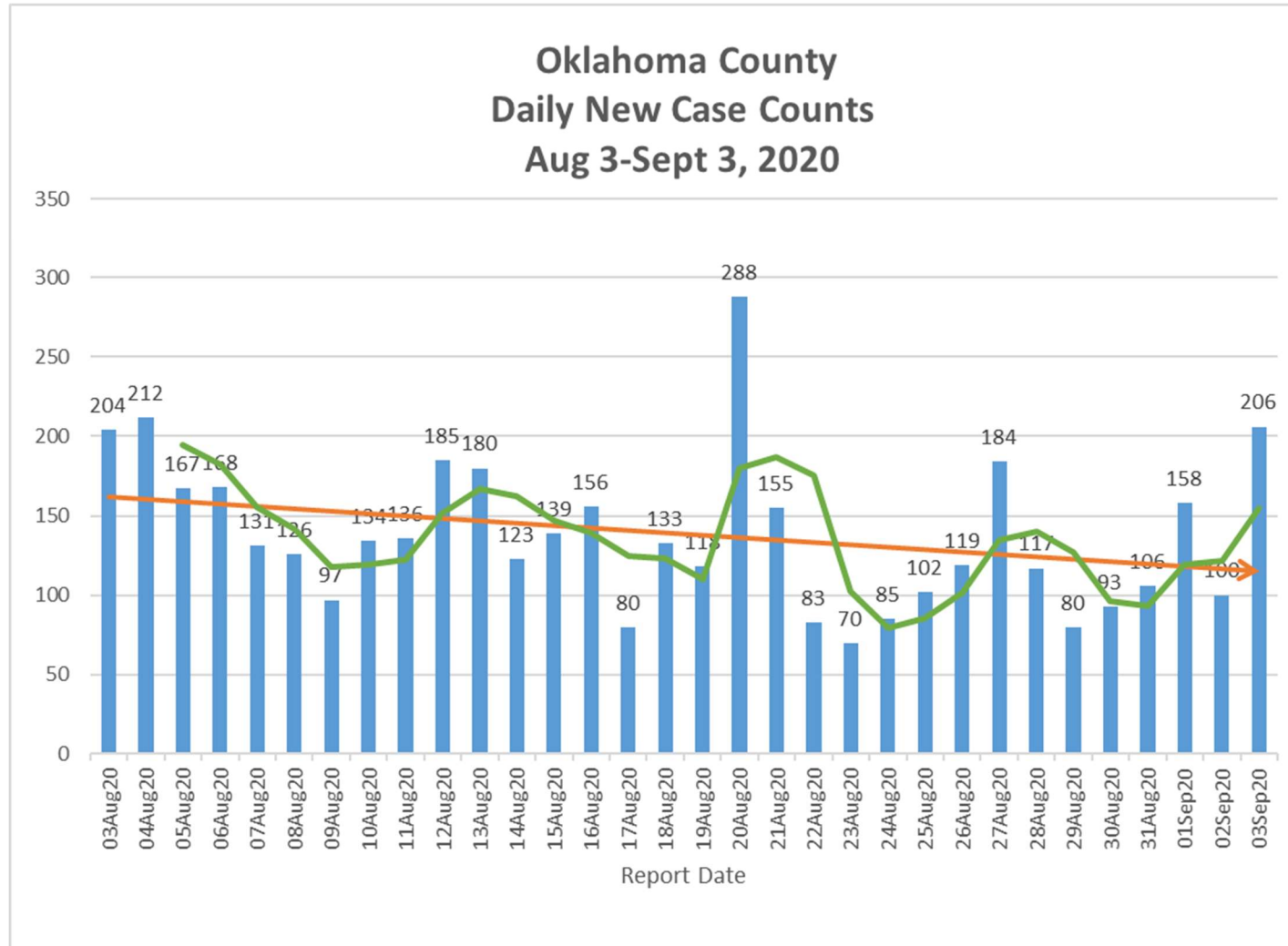


Oklahoma County Syndromic Surveillance of COVID-19 related ED Visits Aug 08-Sept 08, 2020



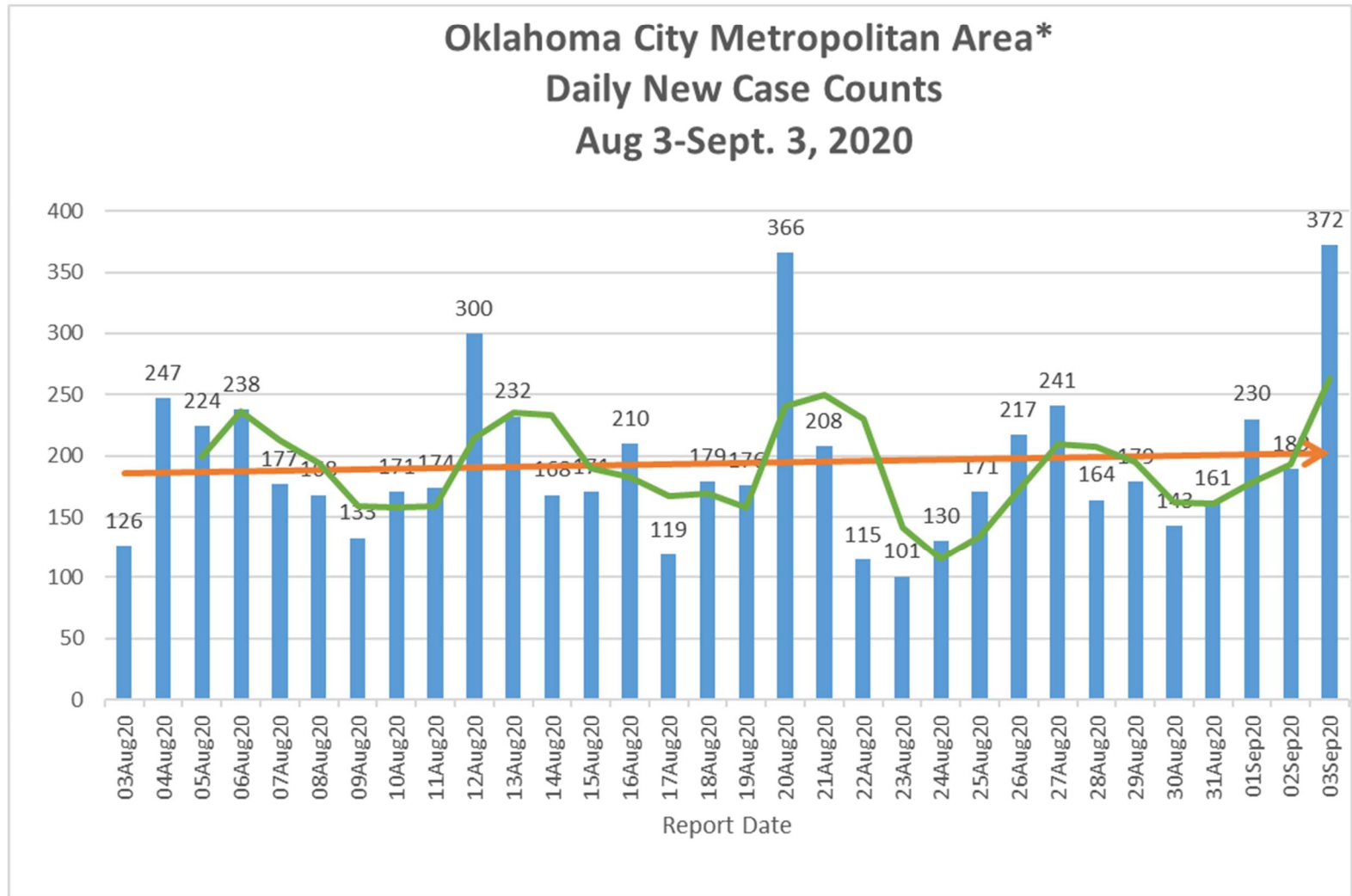


Oklahoma County Daily New Case Counts Aug 3-Sept 3, 2020





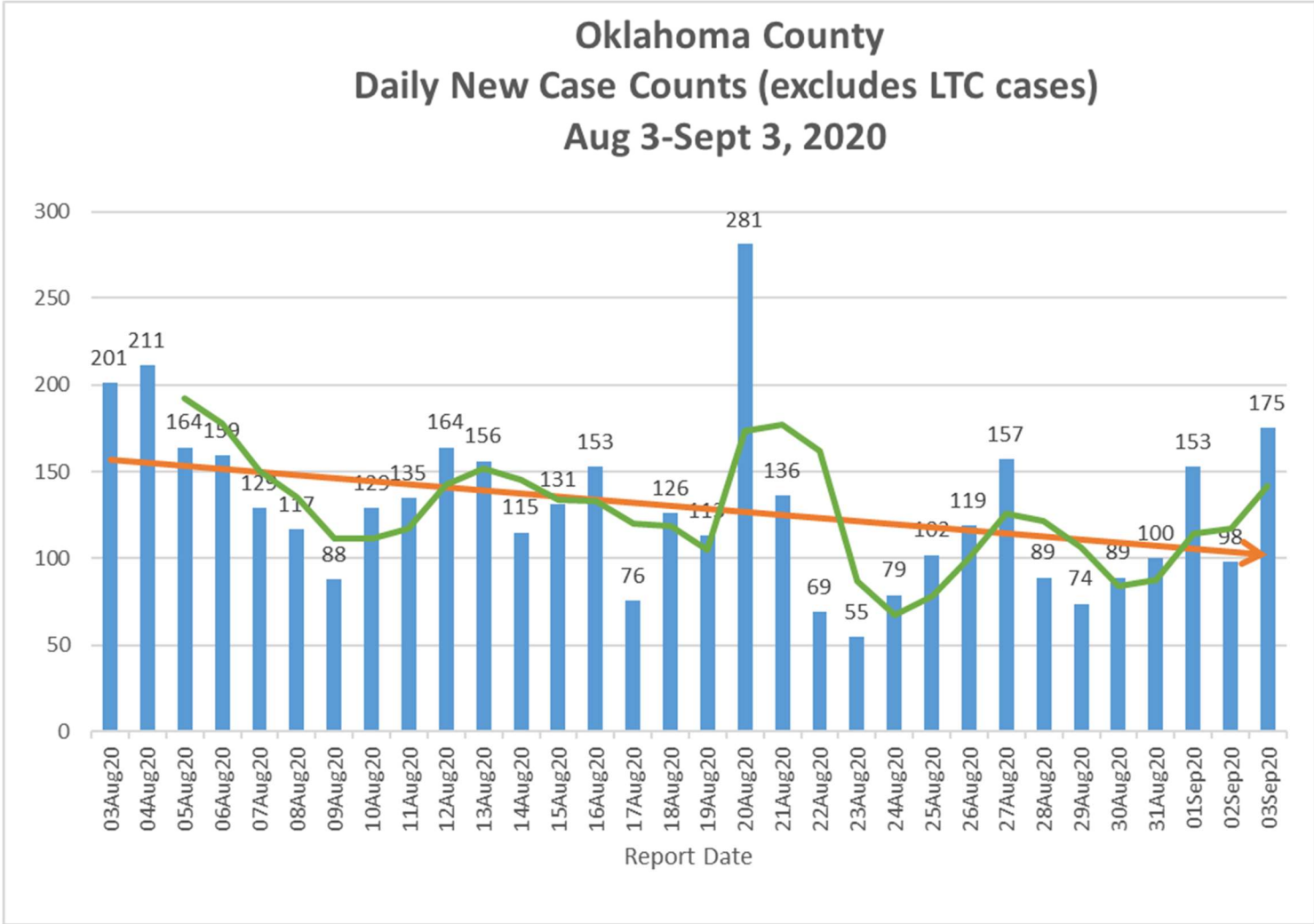
Oklahoma City Metropolitan Area* Daily New Case Counts Aug 3-Sept. 3, 2020



*Includes daily new cases from Oklahoma, Cleveland, and Canadian Counties.

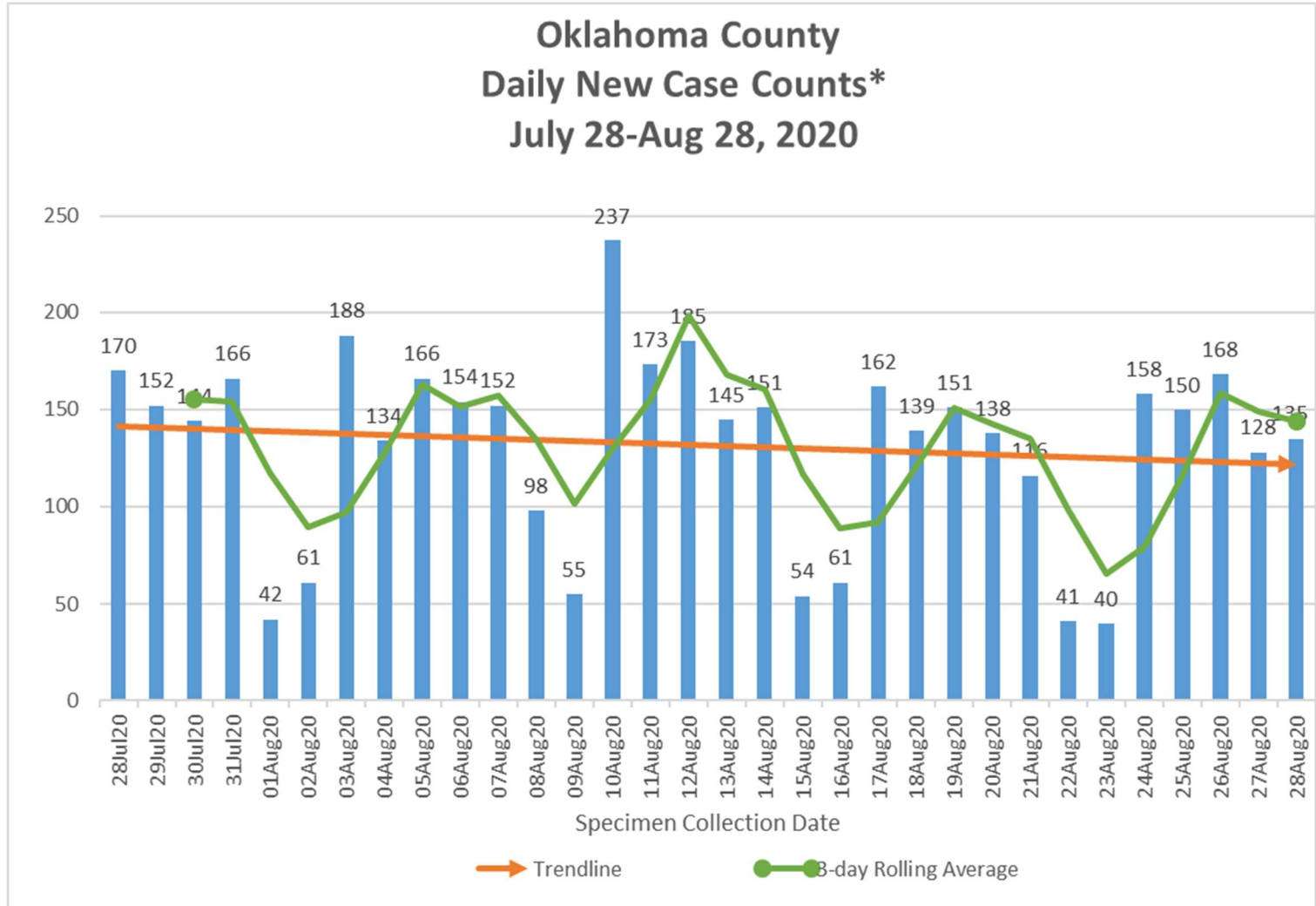


Oklahoma County Daily New Case Counts (excludes LTC cases) Aug 3-Sept 3, 2020





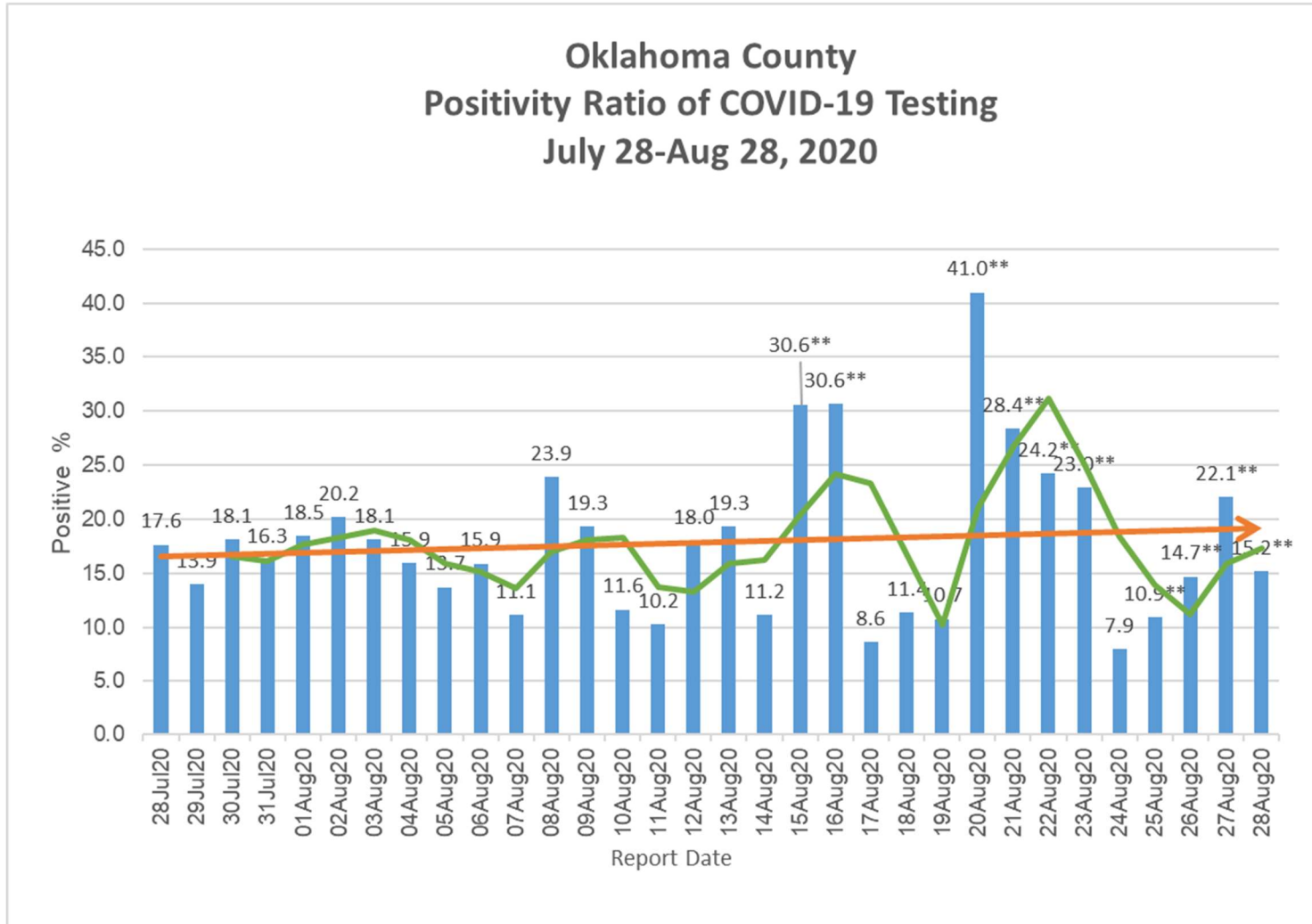
Oklahoma County Daily New Case Counts* July 28-Aug 28, 2020



*Case Counts by Specimen Collection Date



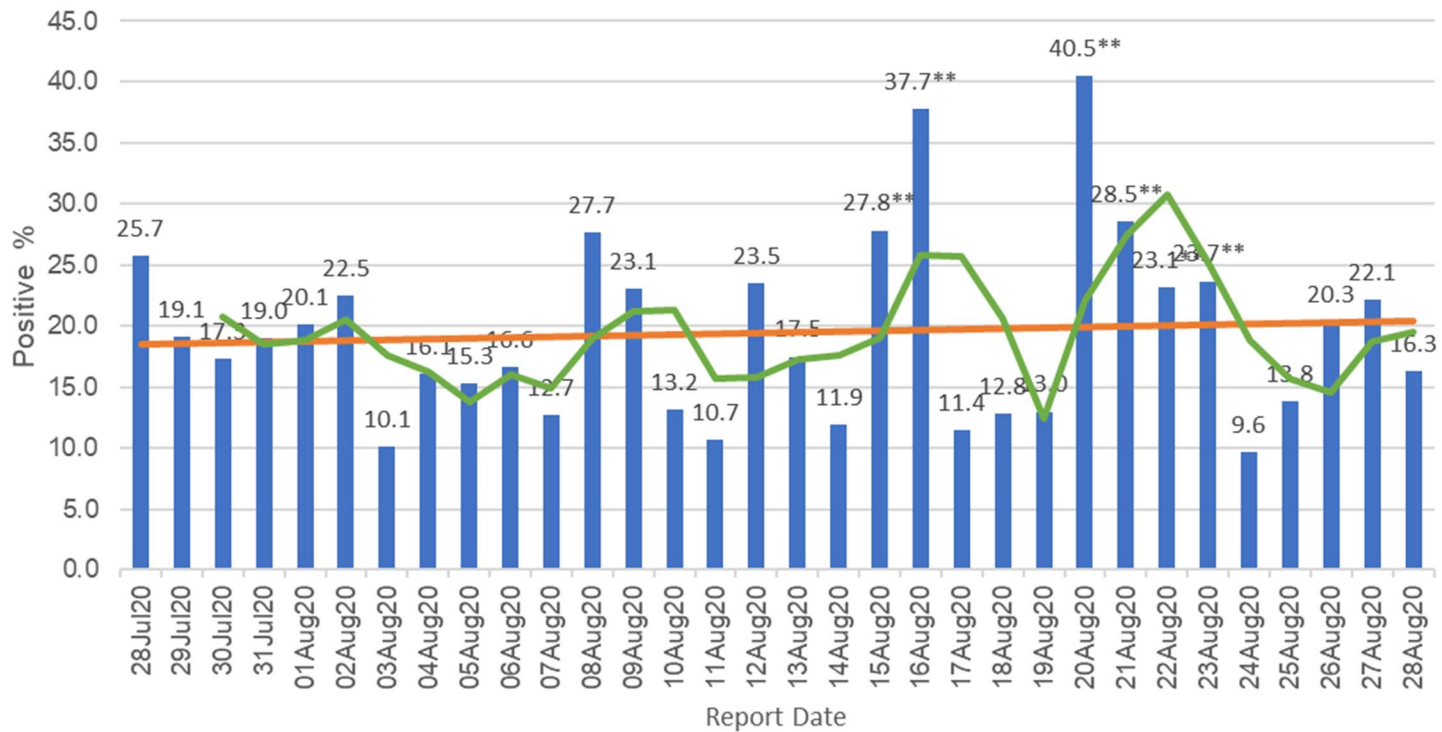
Oklahoma County Positivity Ratio of COVID-19 Testing July 28-Aug 28, 2020



**Outliers attributed to low number of total tests performed.



Oklahoma City Metropolitan Area* Positivity Ratio of COVID-19 Testing July 28-Aug 28, 2020

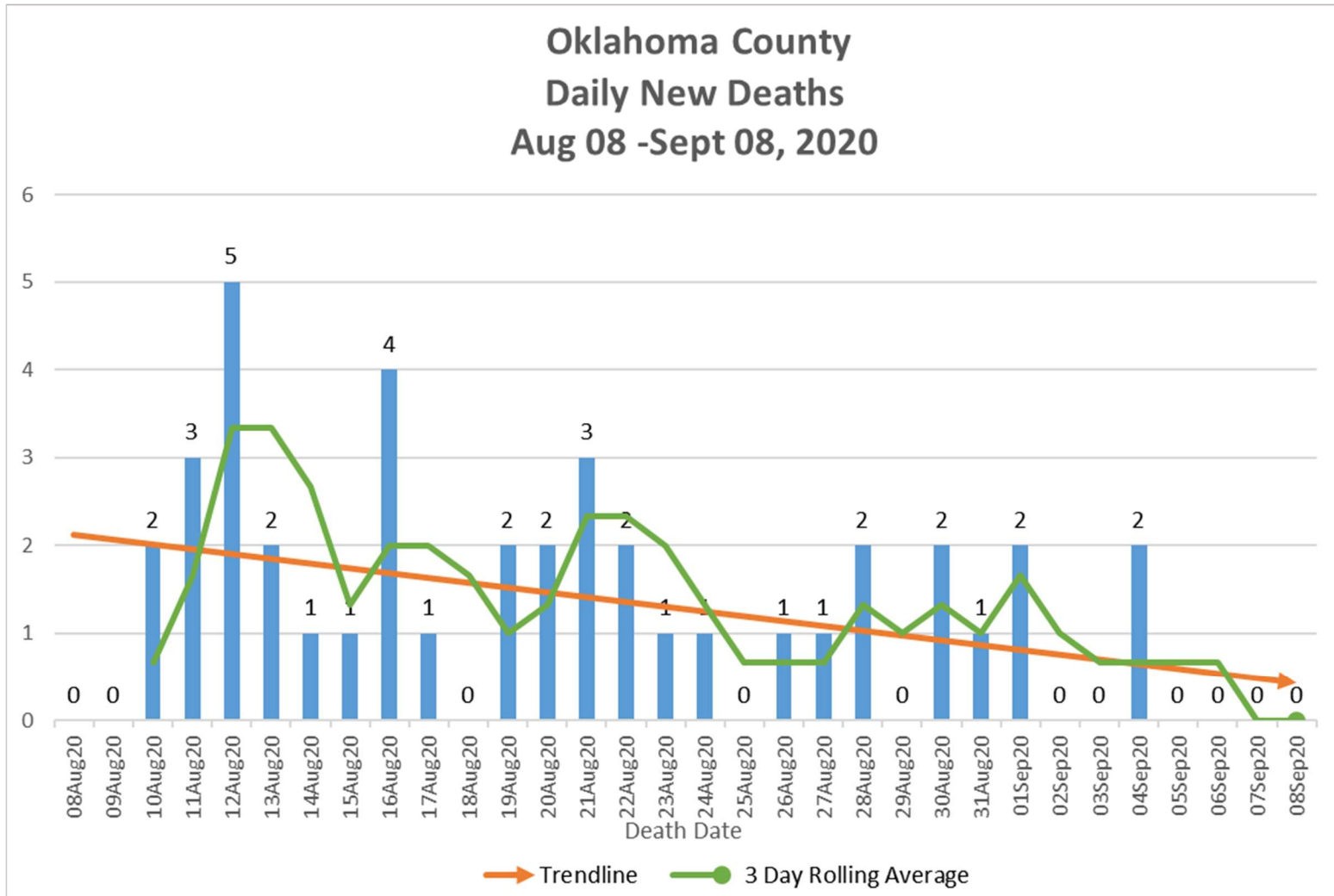


*Includes daily new positive results from Oklahoma, Cleveland, and Canadian Counties.

**Outliers attributed to low number of total tests performed.

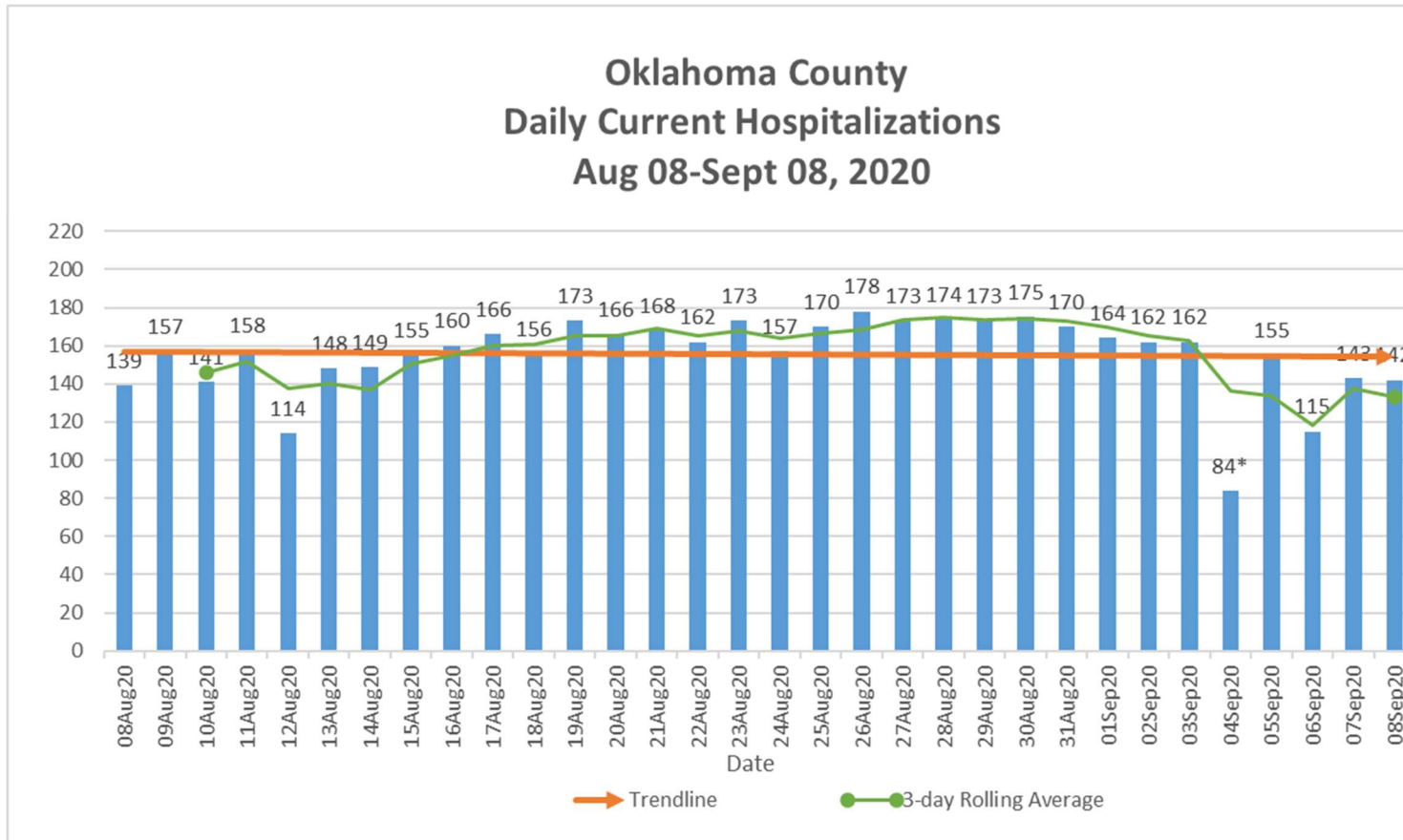


Oklahoma County Daily New Deaths Aug 08 -Sept 08, 2020





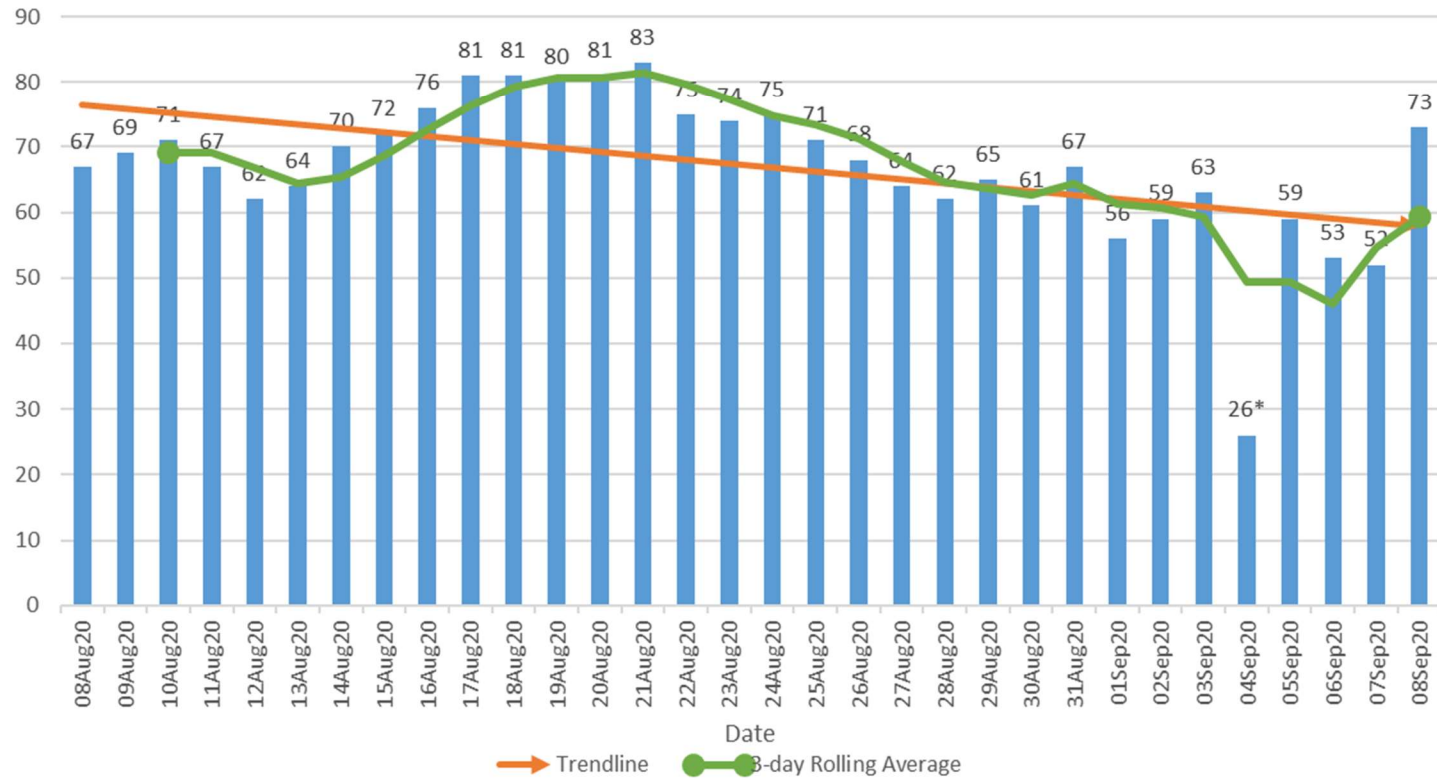
Oklahoma County Daily Current Hospitalizations Aug 08-Sept 08, 2020



*Includes all COVID-19 hospitalizations in Oklahoma County Hospitals.



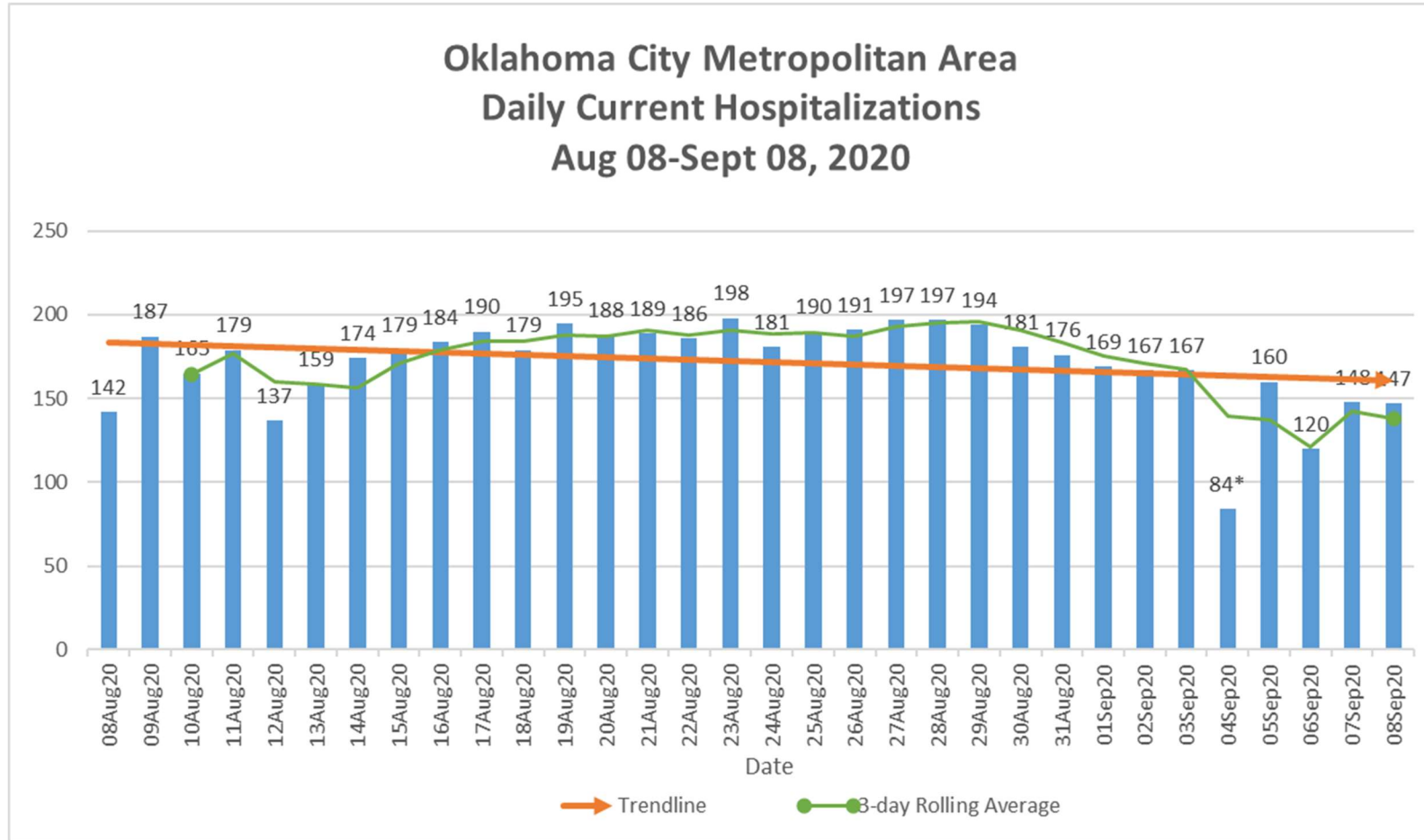
Oklahoma County Daily Current ICU Hospitalizations Aug 08-Sept 08, 2020



*Includes all COVID-19 hospitalizations in Oklahoma County Hospitals.



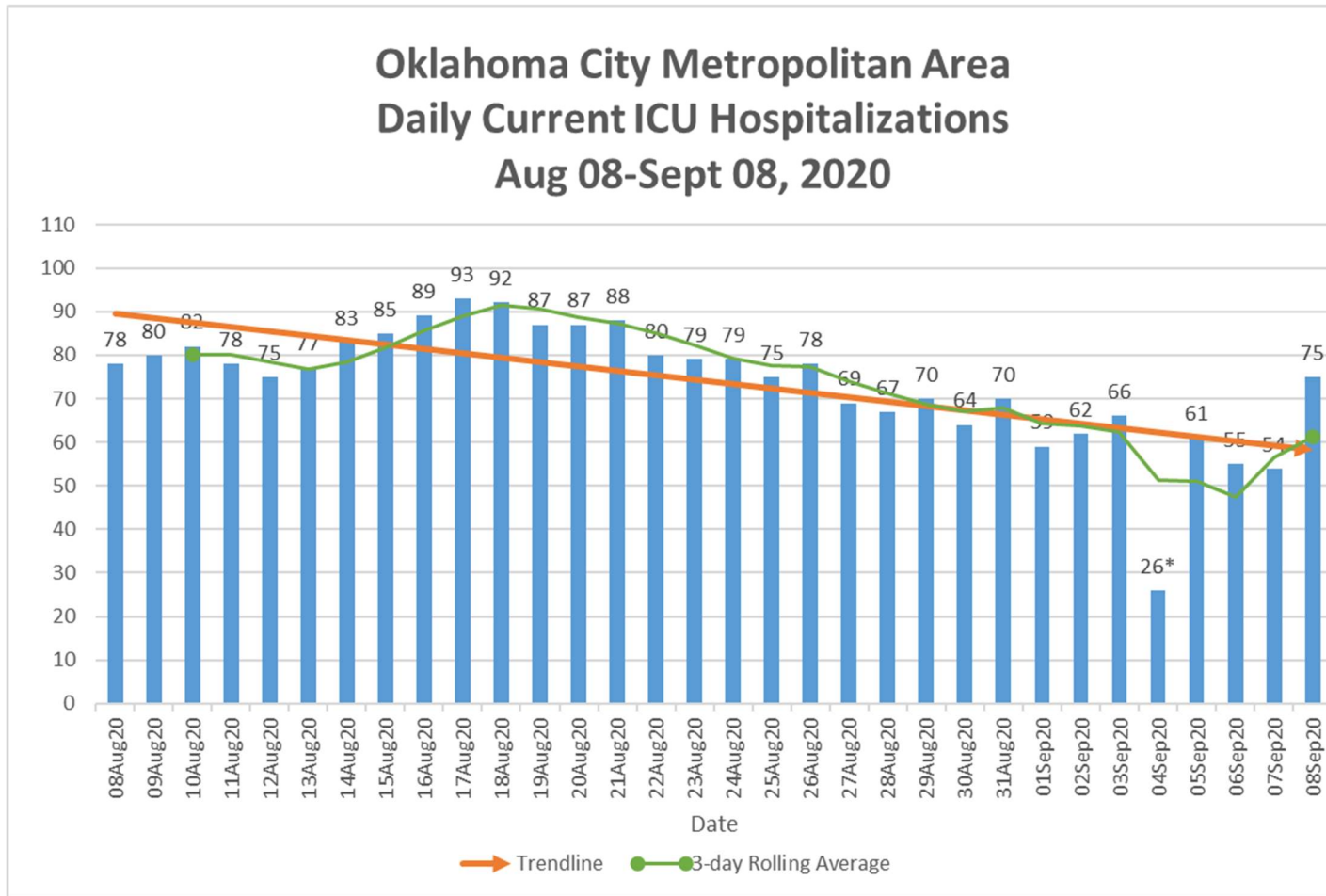
Oklahoma City Metropolitan Area Daily Current Hospitalizations Aug 08-Sept 08, 2020



*Includes all COVID-19 hospitalizations in Oklahoma, Cleveland and Canadian County hospitals.



Oklahoma City Metropolitan Area Daily Current ICU Hospitalizations Aug 08-Sept 08, 2020



*Includes all COVID-19 hospitalizations in Oklahoma, Cleveland and Canadian County hospitals.