



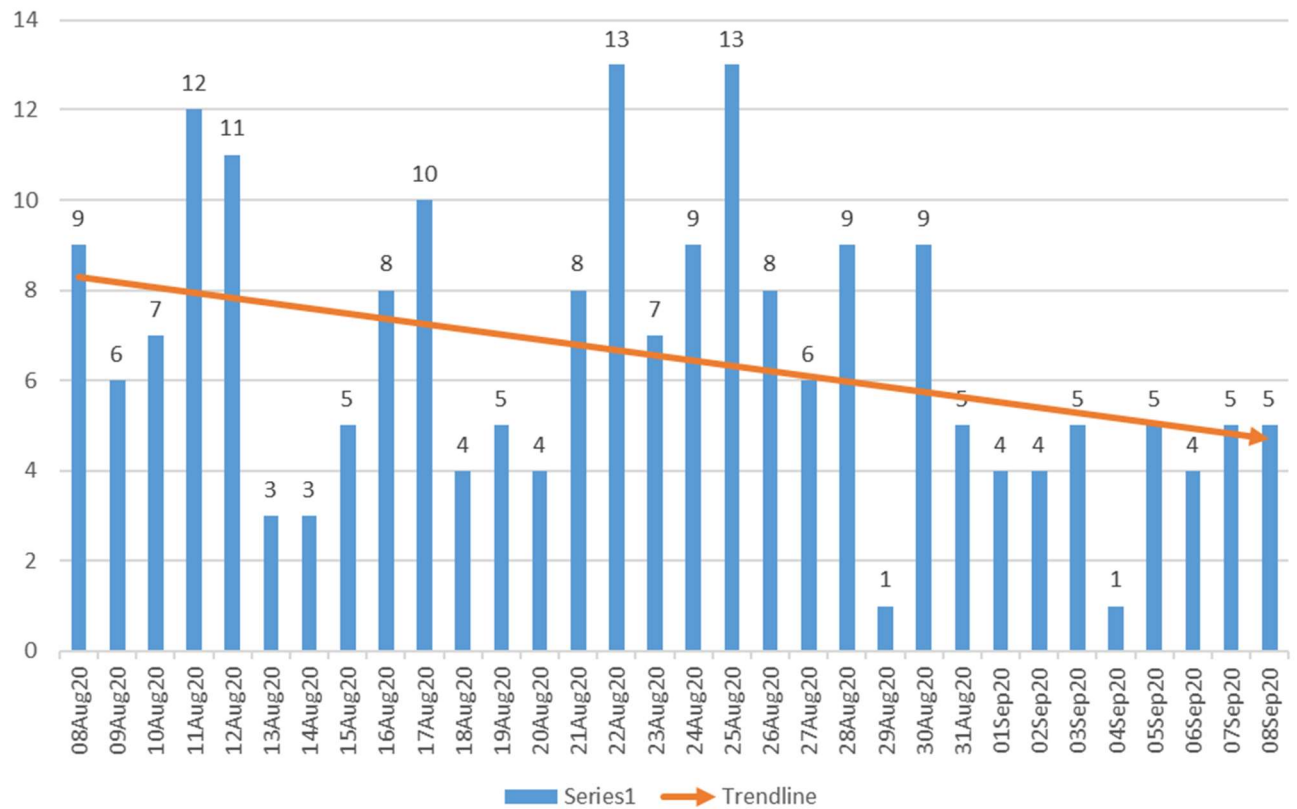
**30 Day COVID-19 Trends  
for Oklahoma City-Metropolitan Area  
August 09-September 09, 2020**

**Cumulative Case Counts and Deaths for Oklahoma County, Oklahoma, and the United States  
As of September 10, 2020**

	<b>Confirmed Cases</b>	<b>Deaths</b>
Oklahoma County	14,713	171
Oklahoma	66,700	876
United States	6,361,265	190,859

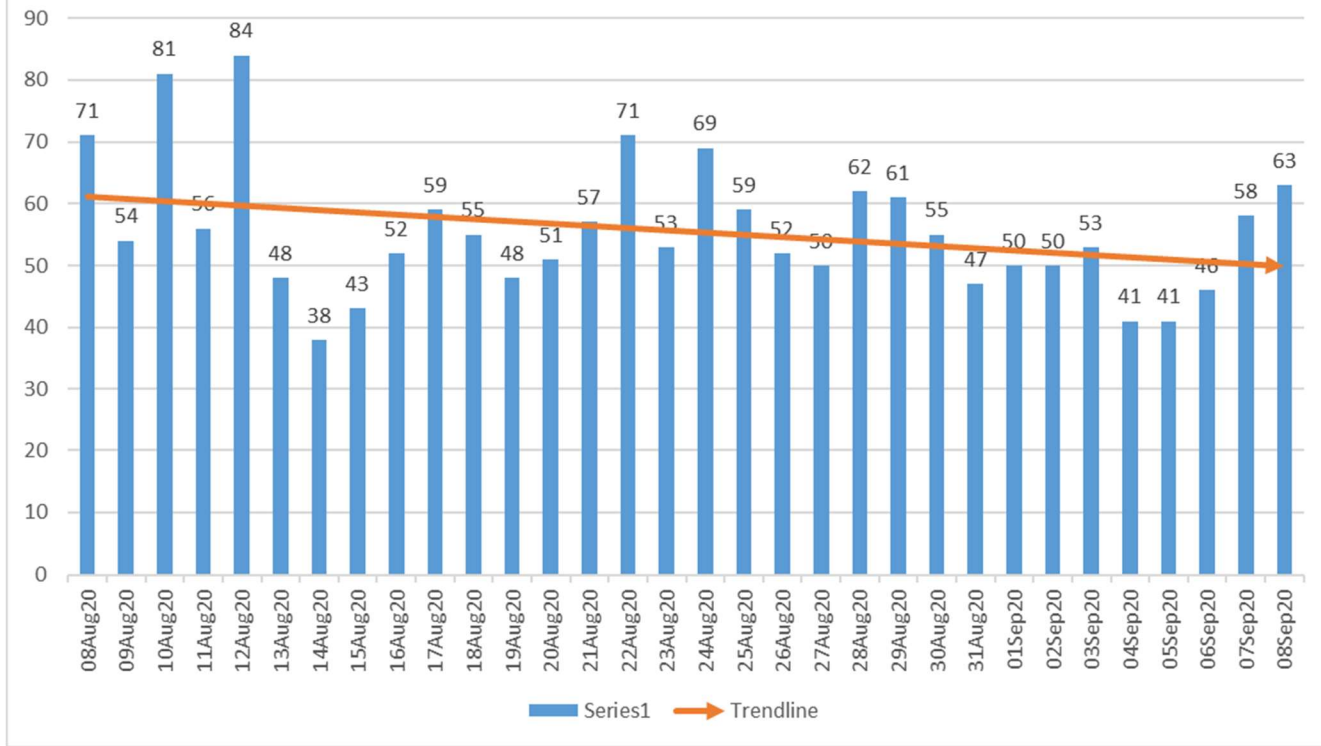


### Oklahoma County Syndromic Surveillance of Influenza-like Illness(ILI) ED Visits Aug 8-Sept 8, 2020



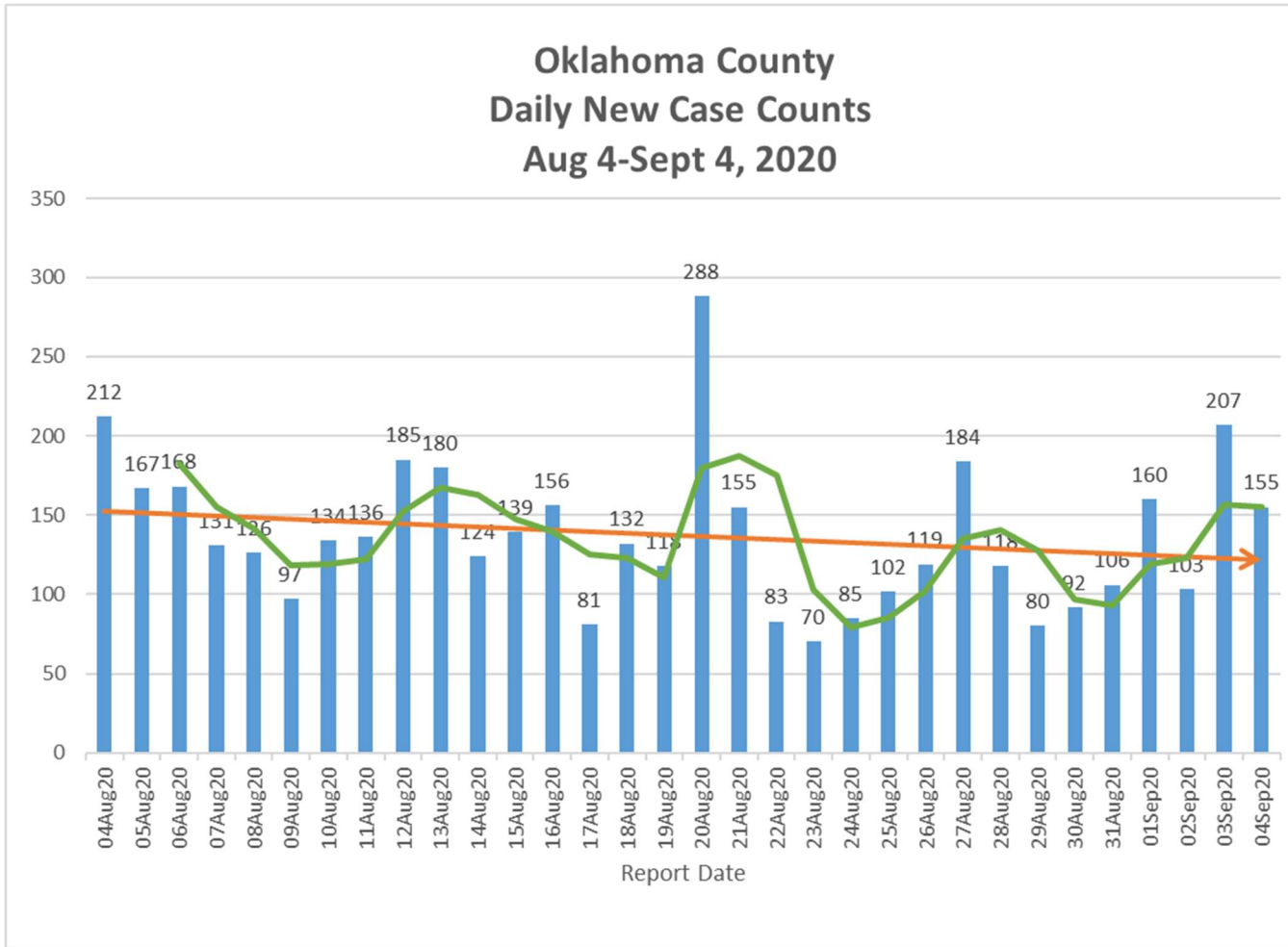


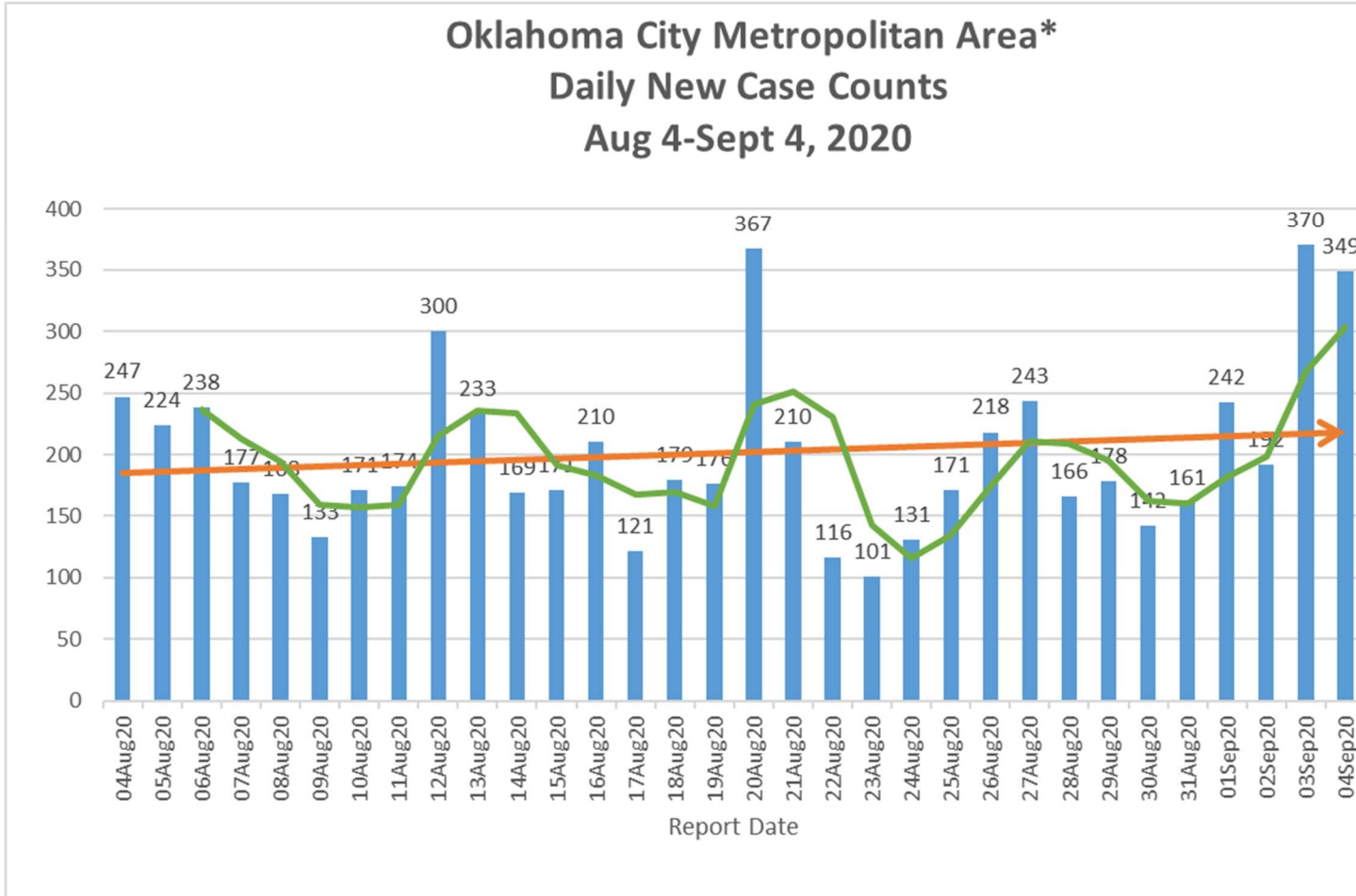
### Oklahoma County Syndromic Surveillance of COVID-19 related ED Visits Aug 8-Sept 8, 2020





### Oklahoma County Daily New Case Counts Aug 4-Sept 4, 2020

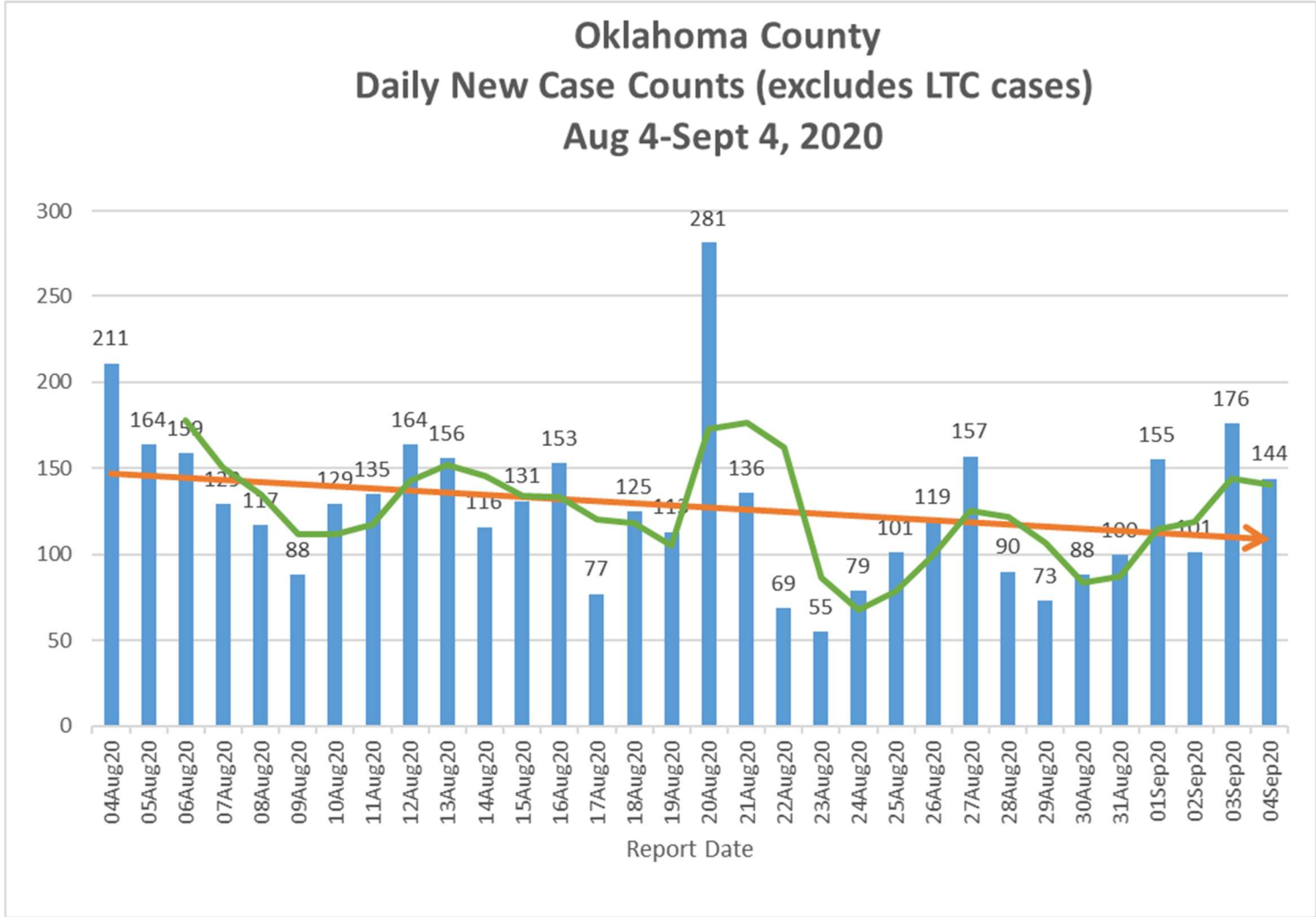




\*Includes daily new cases from Oklahoma, Cleveland, and Canadian Counties.

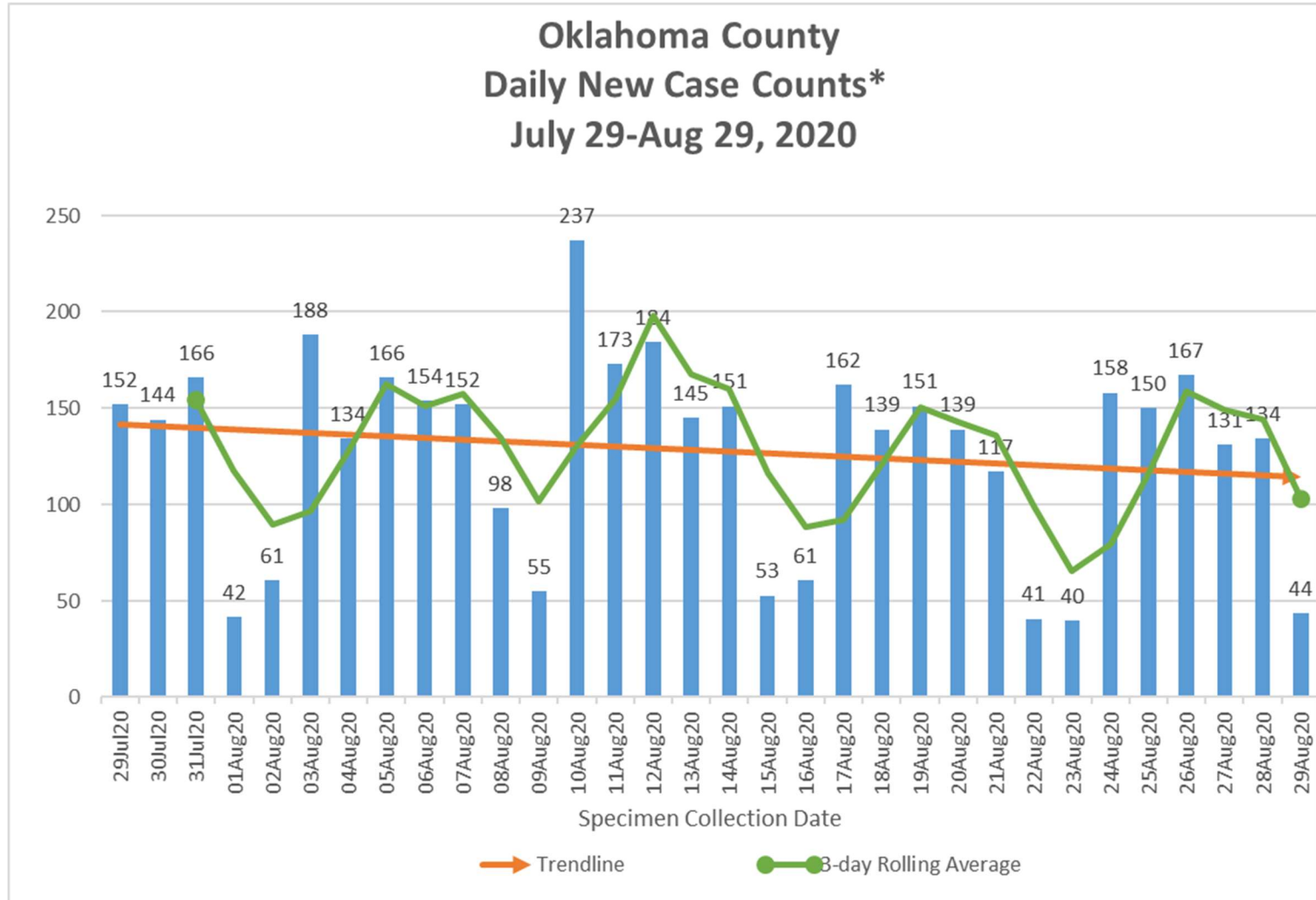


### Oklahoma County Daily New Case Counts (excludes LTC cases) Aug 4-Sept 4, 2020





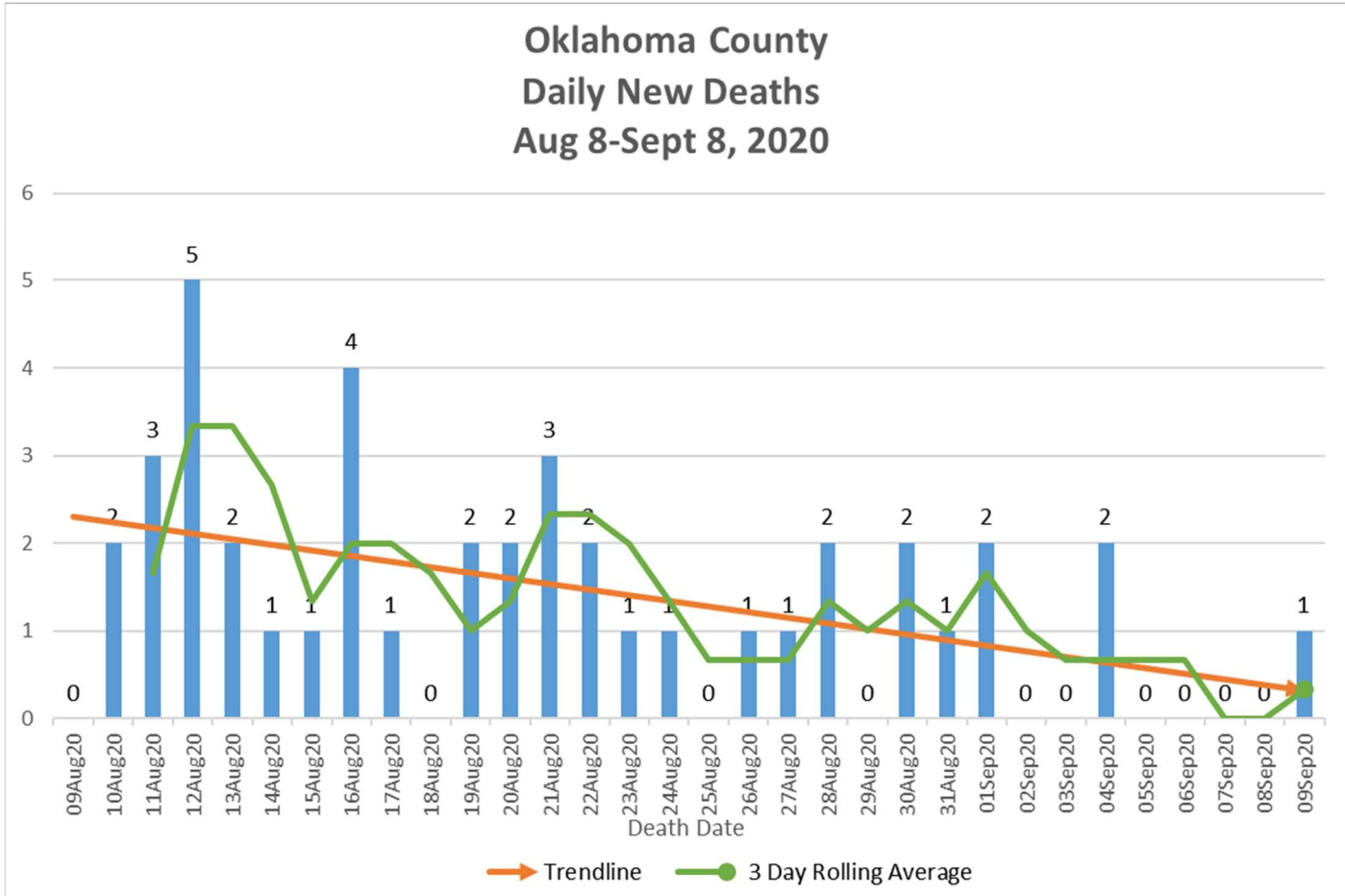
### Oklahoma County Daily New Case Counts\* July 29-Aug 29, 2020



\*Case Counts by Specimen Collection Date



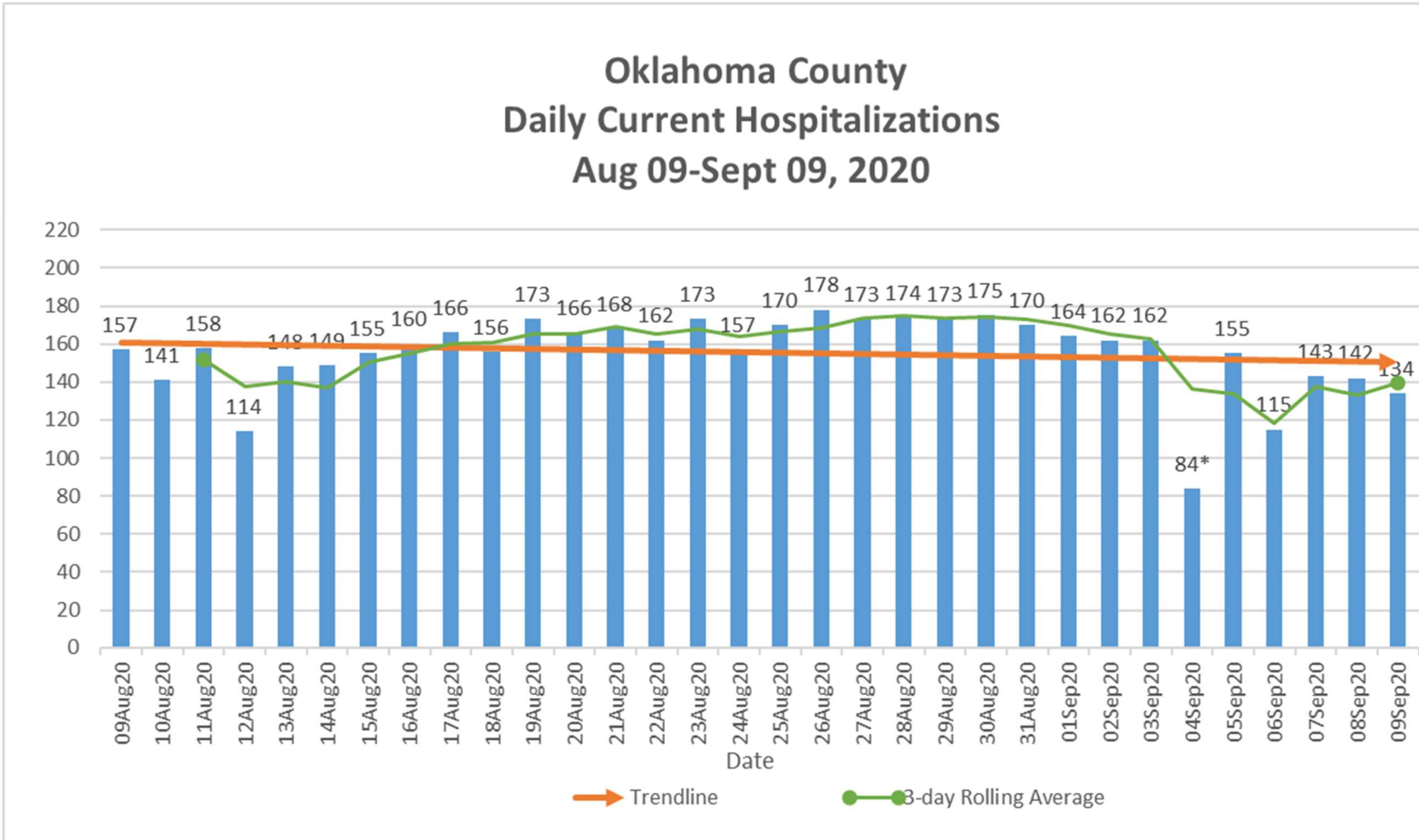
### Oklahoma County Daily New Deaths Aug 8-Sept 8, 2020







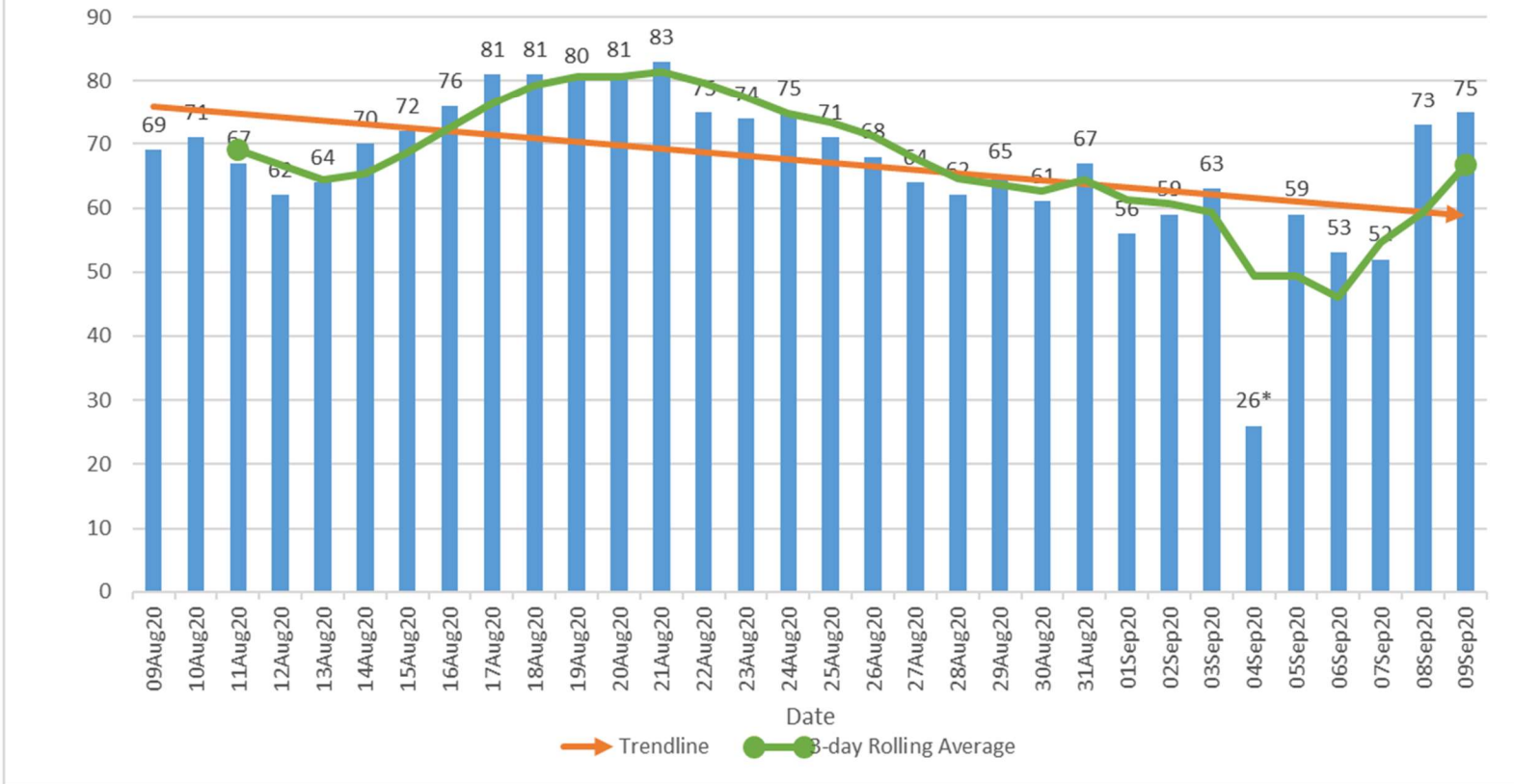
### Oklahoma County Daily Current Hospitalizations Aug 09-Sept 09, 2020



\*Includes all COVID-19 hospitalizations in Oklahoma County Hospitals.



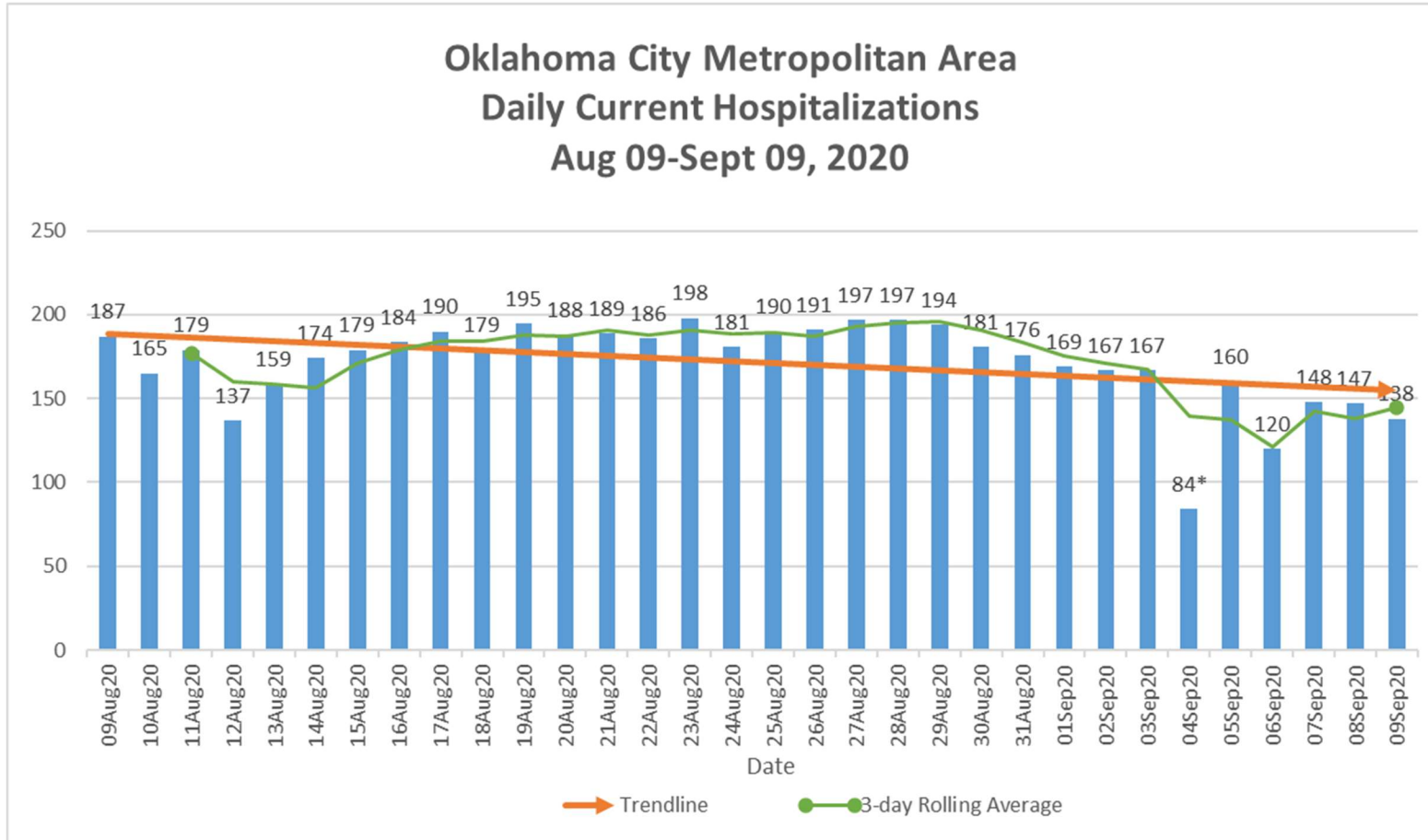
## Oklahoma County Daily Current ICU Hospitalizations Aug 09-Sept 09, 2020



\*Includes all COVID-19 ICU hospitalizations in Oklahoma County Hospitals.



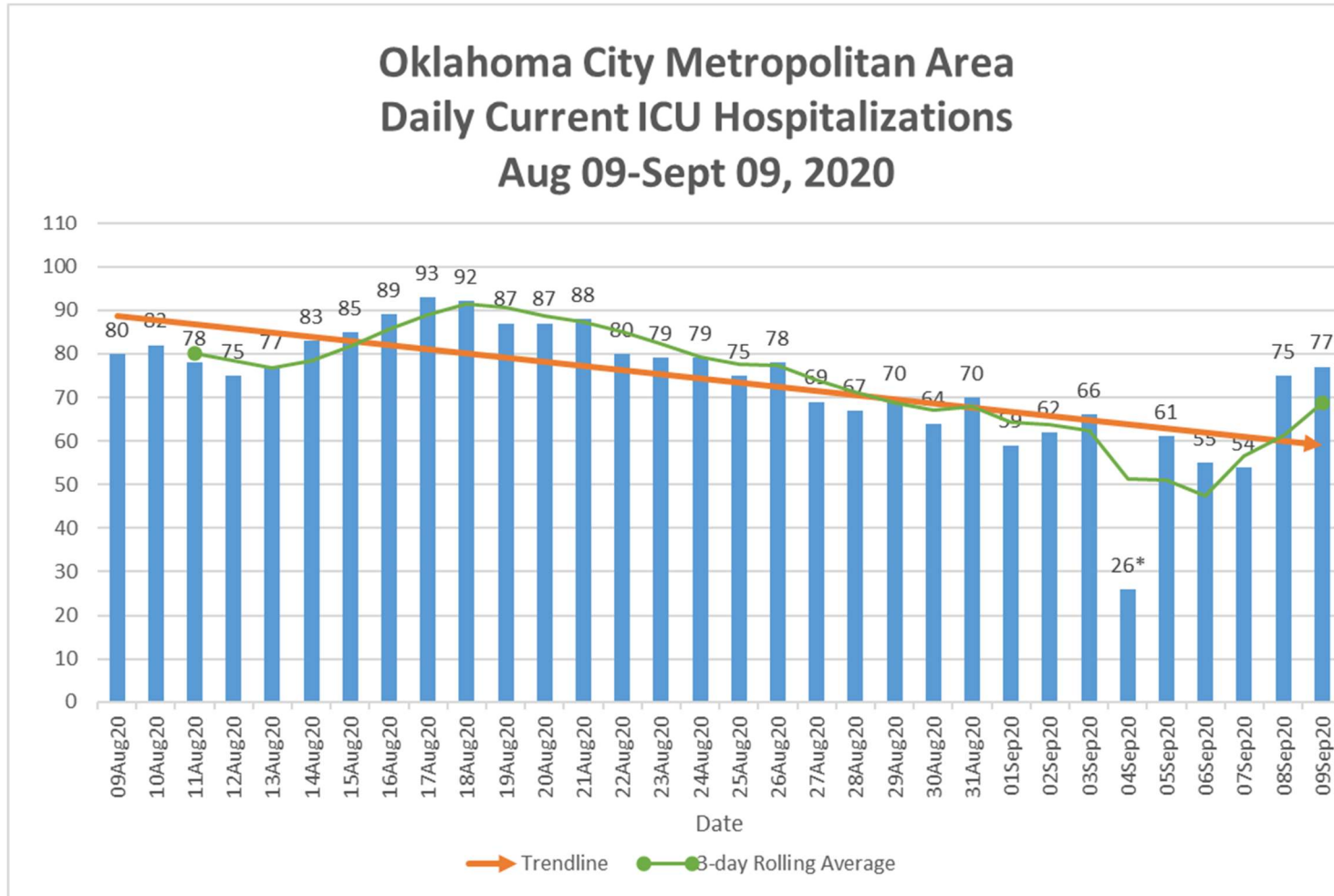
### Oklahoma City Metropolitan Area Daily Current Hospitalizations Aug 09-Sept 09, 2020



\*Includes all COVID-19 hospitalizations in Oklahoma, Cleveland and Canadian County hospitals.



## Oklahoma City Metropolitan Area Daily Current ICU Hospitalizations Aug 09-Sept 09, 2020



\*Includes all COVID-19 ICU hospitalizations in Oklahoma, Cleveland and Canadian County hospitals.