



# City Manager Report

## The City of OKLAHOMA CITY

**NO: 1634**

**DATE: DECEMBER 22, 2020**

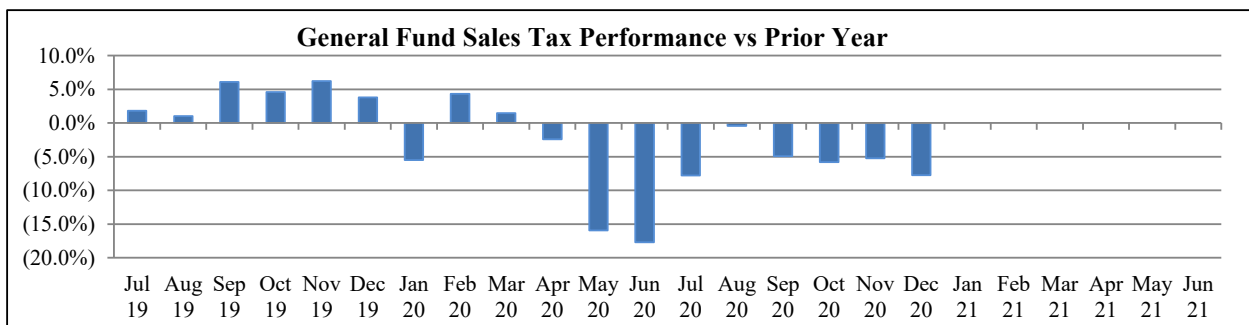
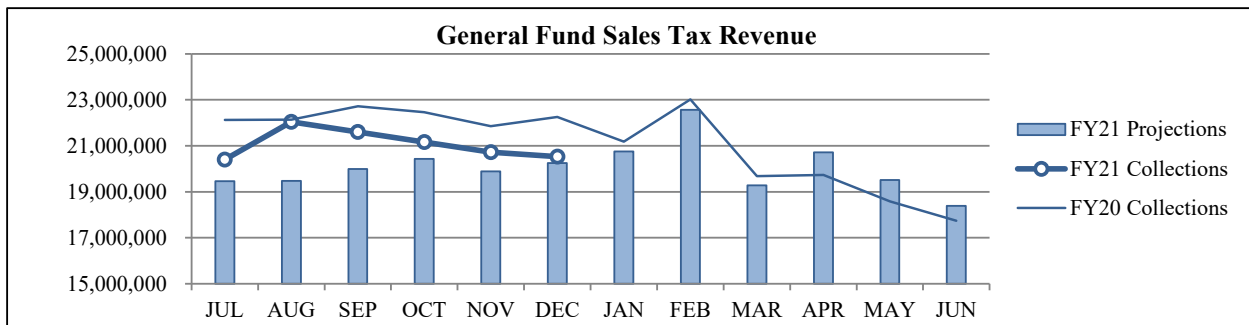
**TO: THE MAYOR AND MEMBERS OF THE CITY COUNCIL**

**SUBJECT: DECEMBER 2020 SALES AND USE TAX COLLECTIONS**

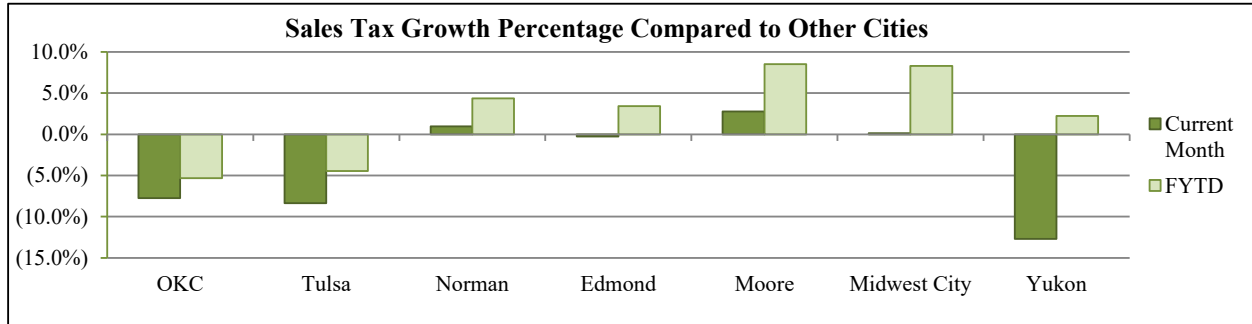
The December remittance is made up primarily of actual collections for the last half of October and estimated collections for the first half of November along with smaller amounts for corrections and reconciling amounts from prior estimates. Combined sales and use taxes for the General Fund are \$10,668,616 or 7.1% above projections for the year.

### General Fund Sales Tax

SALES TAX PERFORMANCE <i>(vs Projection)</i>				SALES TAX PERFORMANCE <i>(vs Prior Year)</i>			
Dec. FY21	Projection	\$ Diff	% Change	Dec. FY21	Dec. FY20	\$ Diff	% Change
20,526,216	20,249,097	277,119	1.4%	20,526,216	22,251,755	(1,725,539)	-7.8%
YTD FY21	YTD Proj	\$ Diff	% Change	YTD FY21	YTD FY20	\$ Diff	% Change
126,441,315	119,502,987	6,938,328	5.8%	126,441,315	133,529,658	(7,088,343)	-5.3%

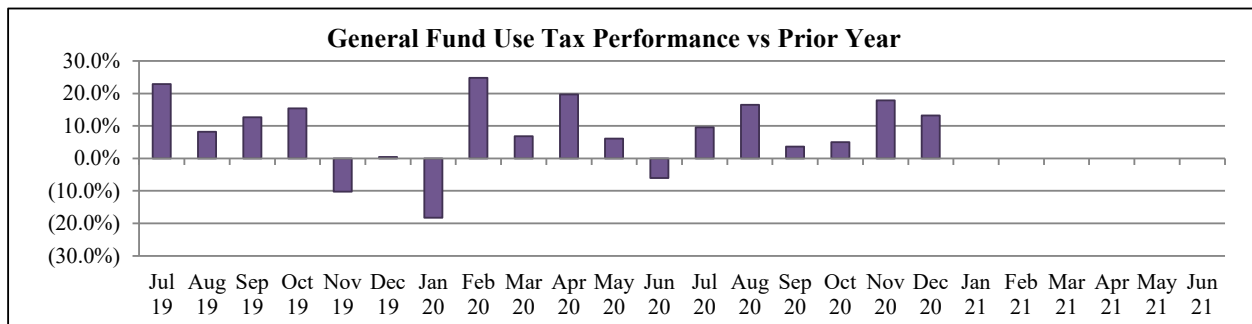
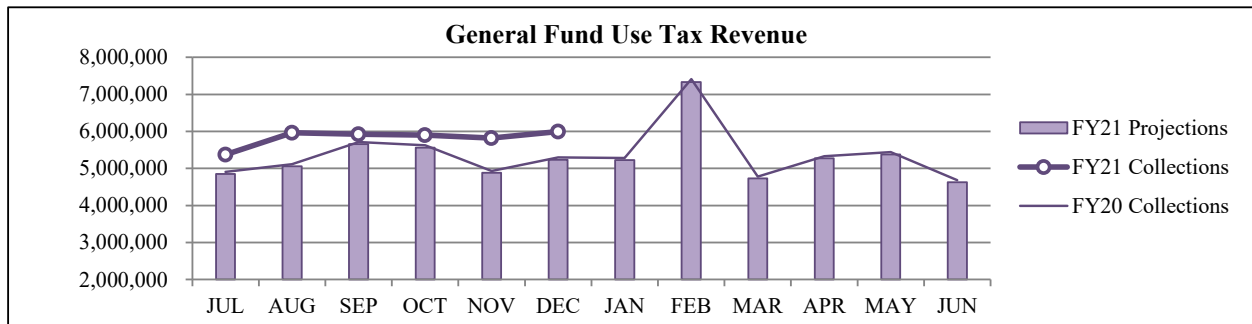


## Sales Tax Comparison to Other Cities



## General Fund Use Tax

USE TAX PERFORMANCE (vs Projection)				USE TAX PERFORMANCE (vs Prior Year)			
Dec. FY21	Projection	\$ Diff	% Change	Dec. FY21	Dec. FY20	\$ Diff	% Change
5,993,118	5,236,976	756,142	14.4%	5,993,118	5,294,713	698,404	13.2%
YTD FY21	YTD Proj	\$ Diff	% Change	YTD FY21	YTD FY20	\$ Diff	% Change
34,980,006	31,249,717	3,730,289	11.9%	34,980,006	31,594,242	3,385,764	10.7%



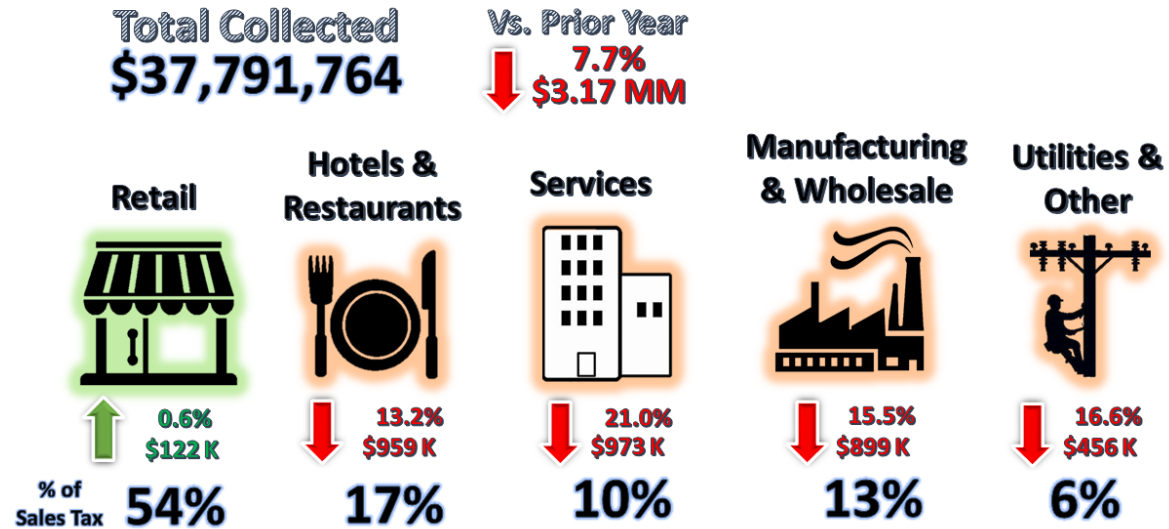
## NAICS Categories Performance

The North American Industry Classification System (NAICS) is the U.S. standard for categorizing and describing types of businesses when analyzing economic information. The City groups all NAICS codes into several general categories when analyzing sales and use tax trends within the local economy. The NAICS system was last updated in 2017. More information can be found on the U.S. Census Bureau website at <https://www.census.gov/eos/www/naics/>

**Sales Tax NAICS Performance**

Retail comprises the largest percentage of sales tax collections at around 50%. The largest year-over-year changes for December were in the Services (down \$973,473), Hotels & Restaurants (down \$958,752) and Wholesale & Manufacturing (down \$899,031) categories.

## SALES TAX PERFORMANCE

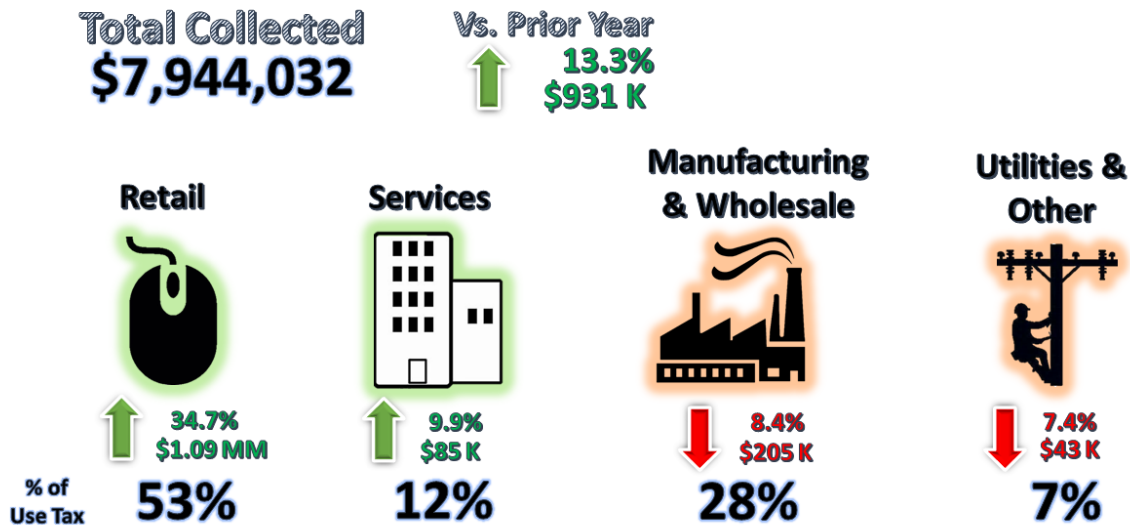


NAICS SALES TAX PERFORMANCE <i>(vs Prior Year)</i>				
NAICS Category	Dec. FY21	Dec. FY20	\$ Diff	% Change
Services	3,670,293	4,643,766	(973,473)	-21.0%
Hotels & Restaurants	6,309,529	7,268,282	(958,752)	-13.2%
Wholesale & Mfg.	4,917,537	5,816,568	(899,031)	-15.5%
Utilities & Other	2,285,979	2,741,789	(455,810)	-16.6%
Retail	20,608,426	20,486,518	121,907	0.6%
<b>Total</b>	<b>37,791,764</b>	<b>40,956,922</b>	<b>(3,165,158)</b>	<b>-7.7%</b>

## Use Tax NAICS Performance

Retail also comprises the largest percentage of use tax collections at around 40%. The largest year-over-year changes for December were in the Retail (up \$1.09 million), Wholesale & Manufacturing (down \$204,524) and Services (up \$84,748) categories.

# USE TAX PERFORMANCE



NAICS USE TAX PERFORMANCE (vs Prior Year)				
NAICS Category	Dec. FY21	Dec. FY20	\$ Diff	% Change
Retail	4,243,412	3,149,121	1,094,291	34.7%
Wholesale & Mfg.	2,222,894	2,427,417	(204,524)	-8.4%
Services	941,300	856,552	84,748	9.9%
Utilities & Other	536,426	579,569	(43,143)	-7.4%
<b>Total</b>	<b>7,944,032</b>	<b>7,012,659</b>	<b>931,373</b>	<b>13.3%</b>

Staff is available should you have questions or require additional information.

  
Craig Freeman  
City Manager