

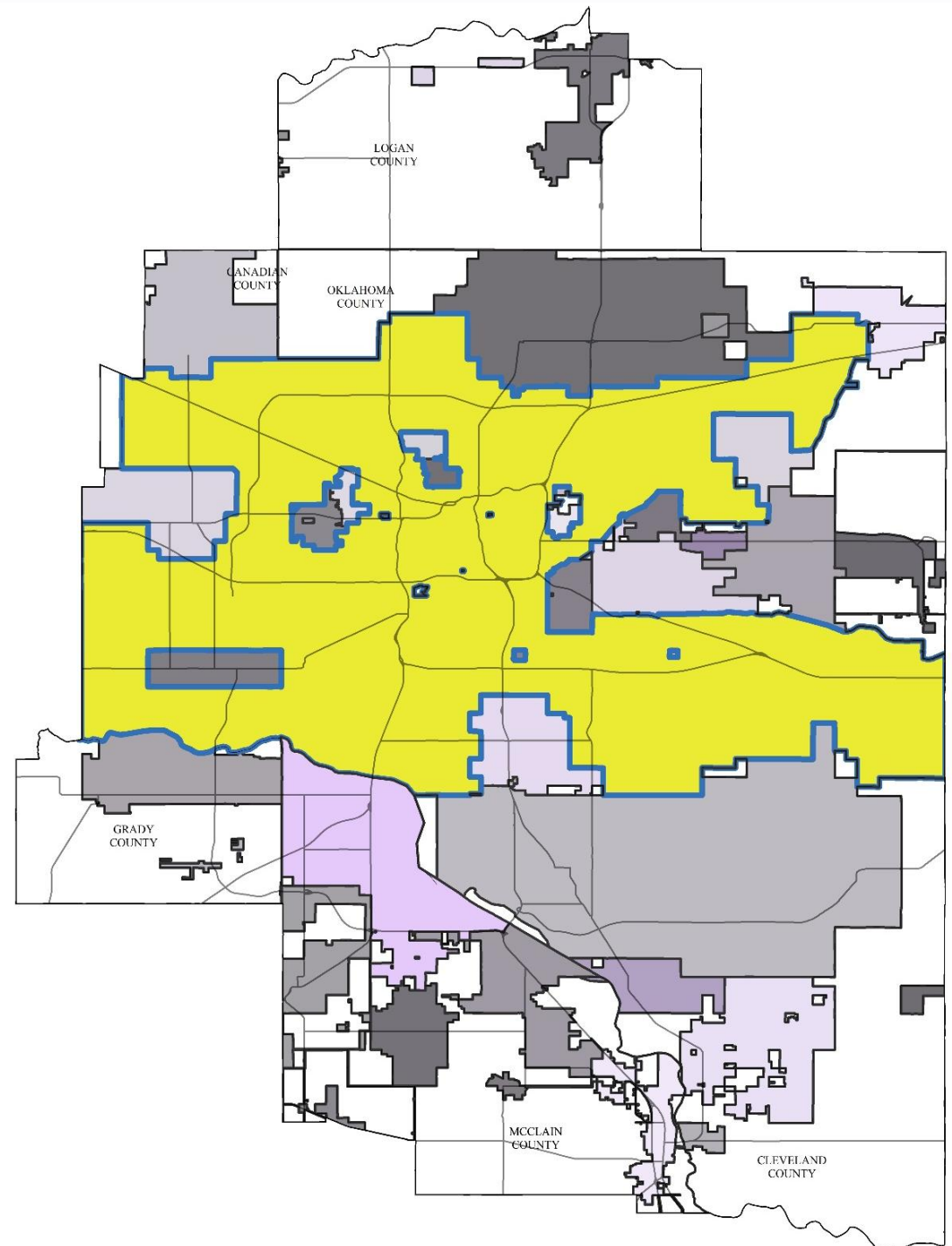


2010-2013 Central Oklahoma Regional Growth Patterns

July 7th, 2015

Central Oklahoma

- +2,000 sq. mi.
- 47 Entities
 - Oklahoma City in yellow
- Between 2000 and 2010 the OCARTS area added development the equivalent of the size of Edmond
 - 88 square miles



Metropolitan Transportation Plan

- Residential building permits
- City Boundaries
- School Districts
- Sewer Service Areas
- Local and Regional Geography
- Local Plans
- Population Data
- Employment Data
- Transportation Network
- Vehicle Miles Traveled
- Congestion
- Impacts

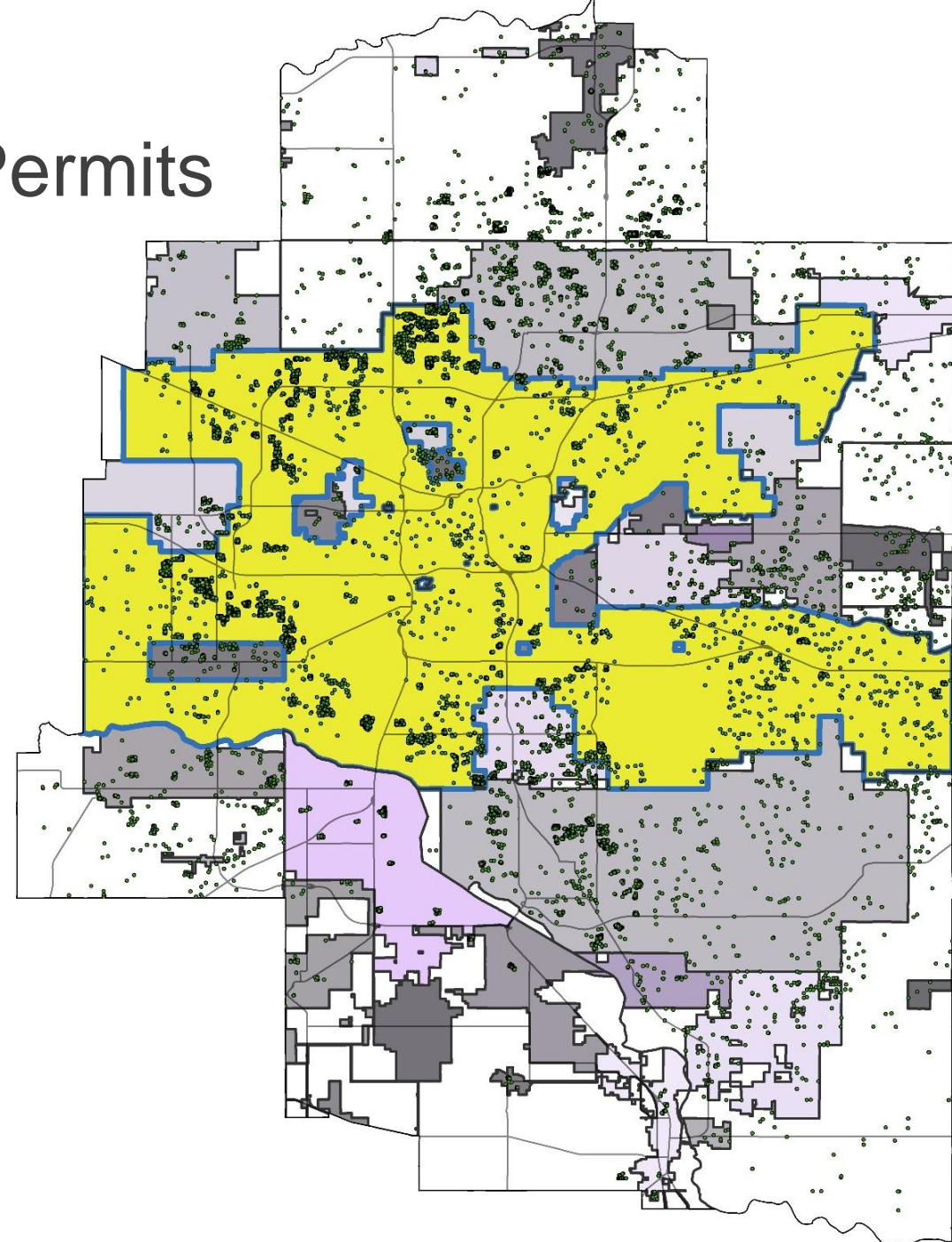
Regional Building Boom



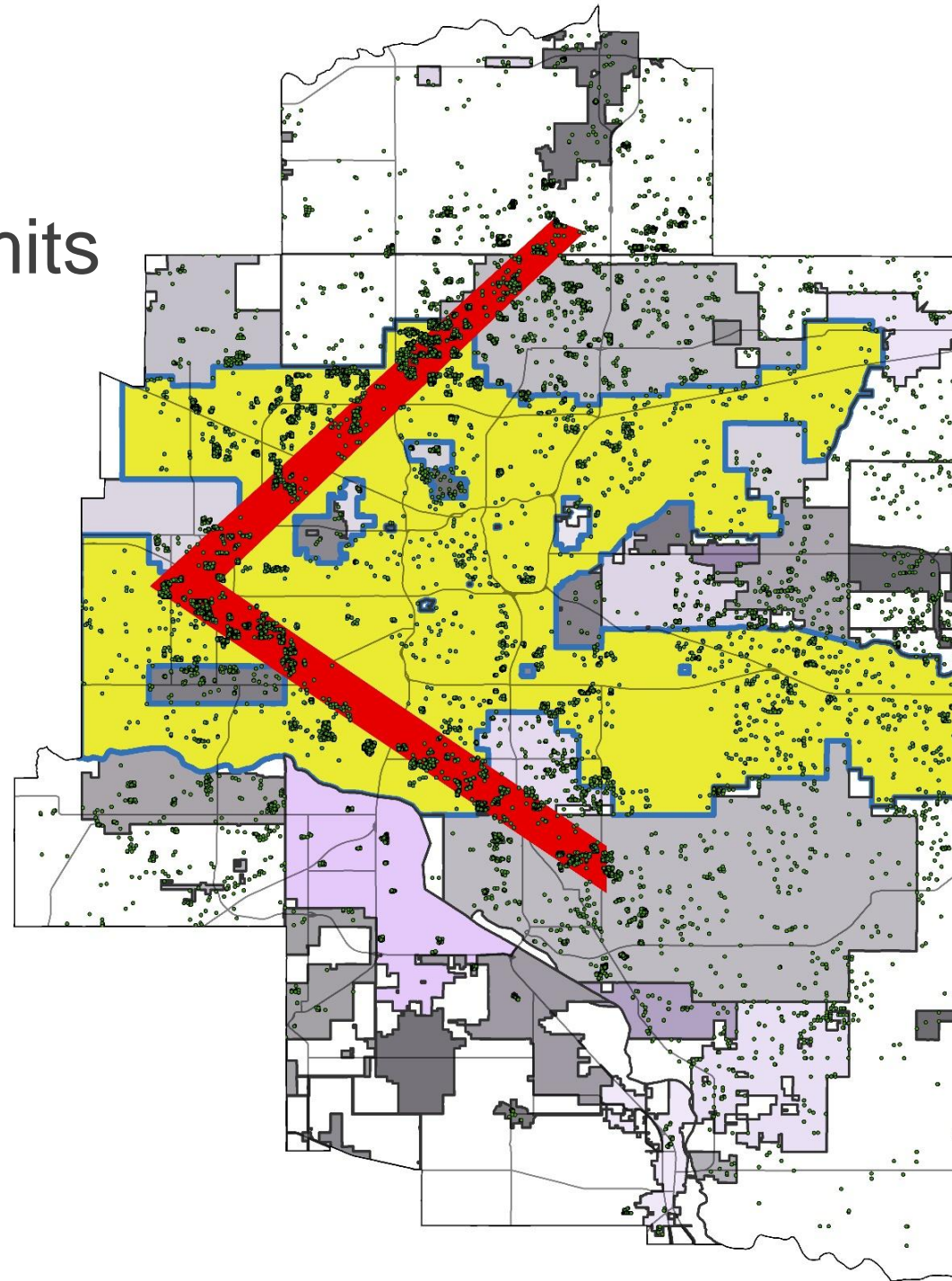
- 2010 Base Population \approx 1.1 million
- 2040 Projected Population \approx 1.6 million
- 2010-2040 projected population change = +39%
 - +452,156 people

2010-2013 Residential Building Permits

City	Building Permits	Estimated Population Change	Change in Total Housing since 2010
Oklahoma City	16,741	42,000	6.06%
Region	28,869	72,000	5.28%



2010-2013 Residential Building Permits



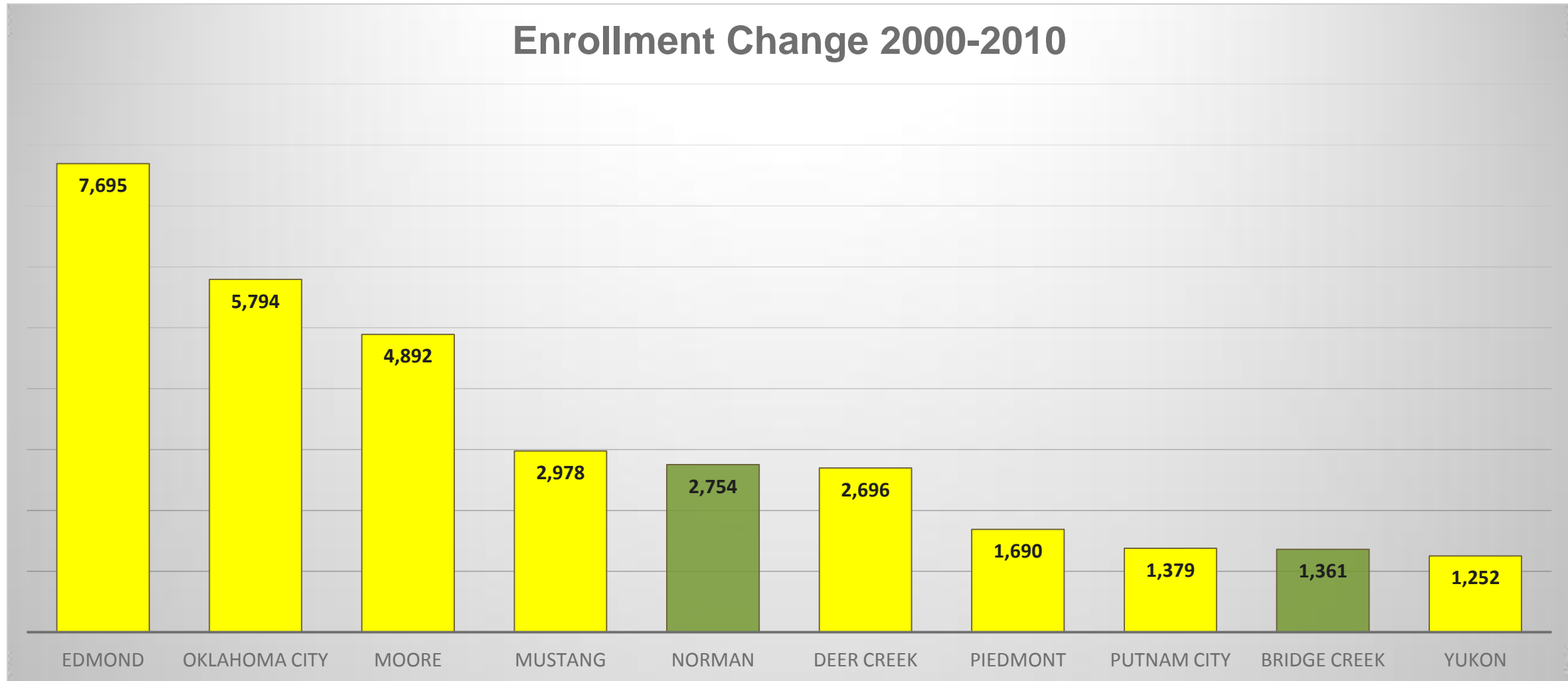
Regional School Districts

- 47 entities
- 40 school districts
 - 23 of those districts fall within OKC
- 2010 regional enrollment = 188,727



Regional School District Growth 2000-2010

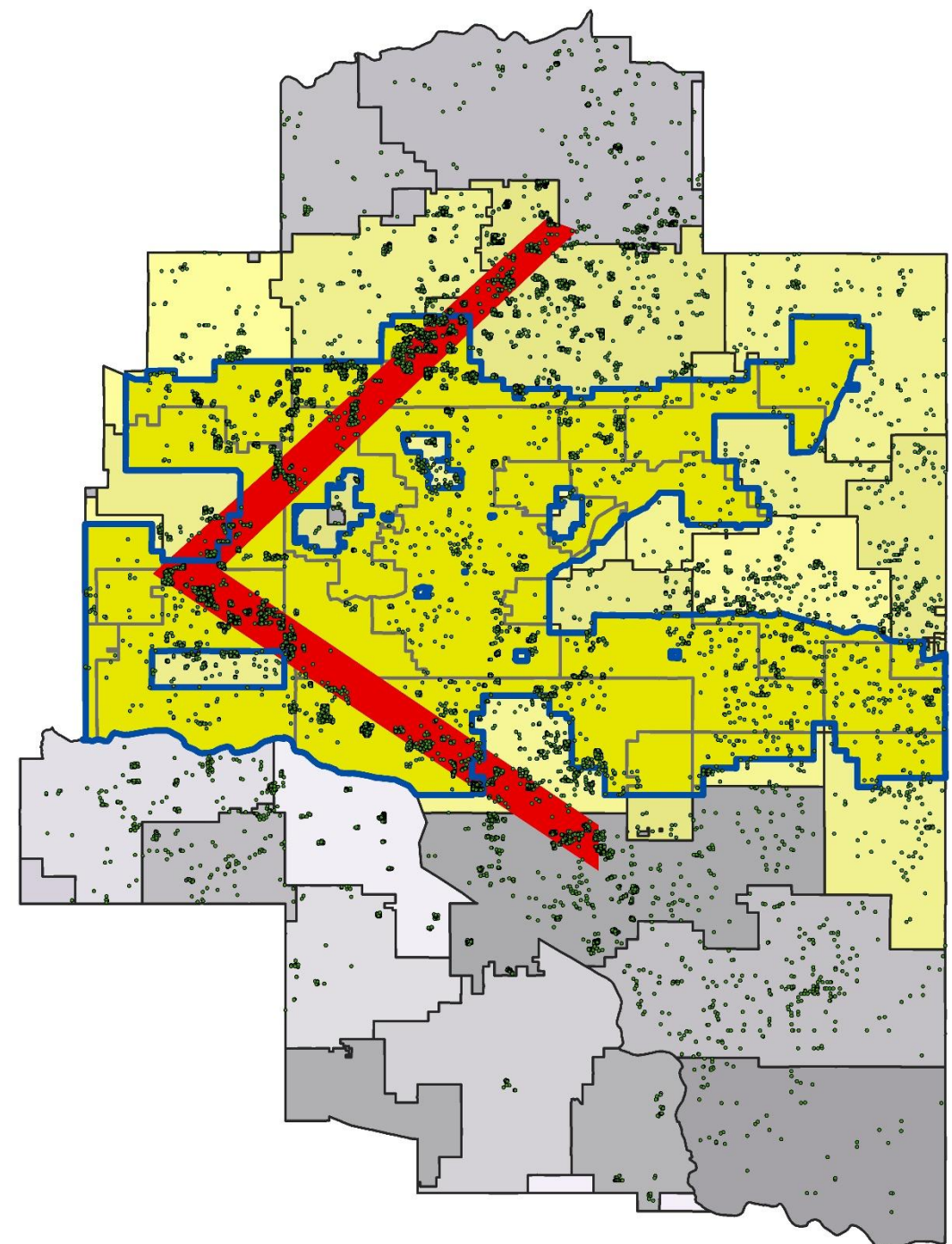
(Top 10 - School Districts in OKC in Yellow)



Building Permits by School District (2010-2013)

School Districts within OKC City Limits

- Banner
- Choctaw/Nicoma Park
- Crooked Oak
- Crutcho
- Deer Creek
- Edmond
- Harrah
- Jones
- Little Axe
- Luther
- McLoud
- Mid-Del City
- Millwood
- Moore
- Mustang
- Oakdale
- Oklahoma City
- Piedmont
- Putnam City
- Robin Hill
- Union City
- Western Heights
- Yukon



Building Permits by School Districts (2010-2013)

School District	Building Permits	Permits in OKC City Limits	Percentage of Permits in OKC City Limits
Putnam City	943	905	95.97%
Deer Creek	3,048	2,790	91.54%
Mustang	3,261	2,983	91.48%
Oklahoma City	1,747	1,584	90.67%
Mid-Del	813	690	84.87%
Yukon	1,456	1,225	84.13%
Piedmont	759	610	80.37%
Moore	4,213	2,331	55.33%
Edmond	5,452	2,862	52.49%
Norman	3,725	2	0.05%



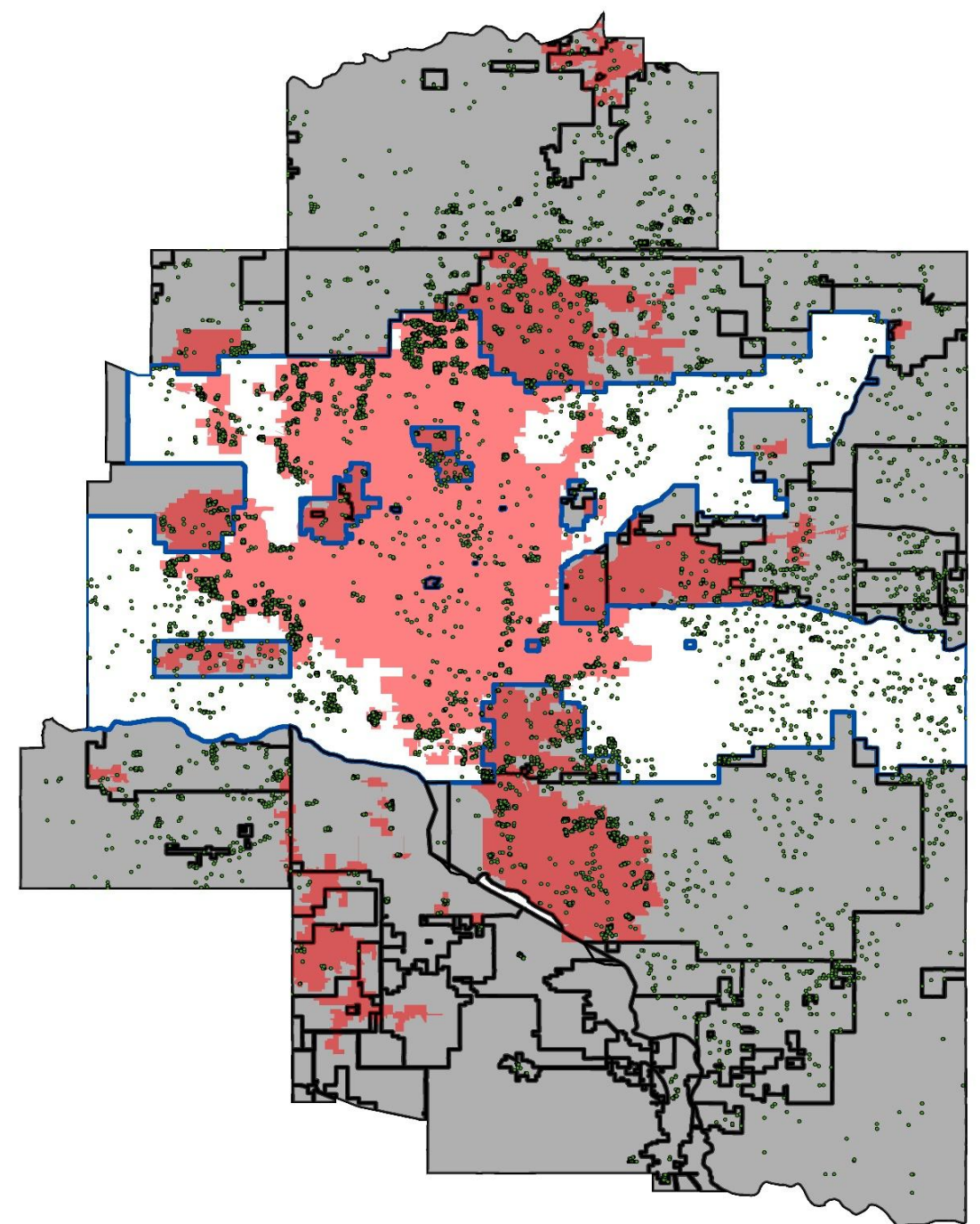
Sewer Service Data

Service Area

- 82% inside
- 18% outside

Legend

Blue line= City limits of Oklahoma City
Red = Sewer Service
Green Points = Building Permits



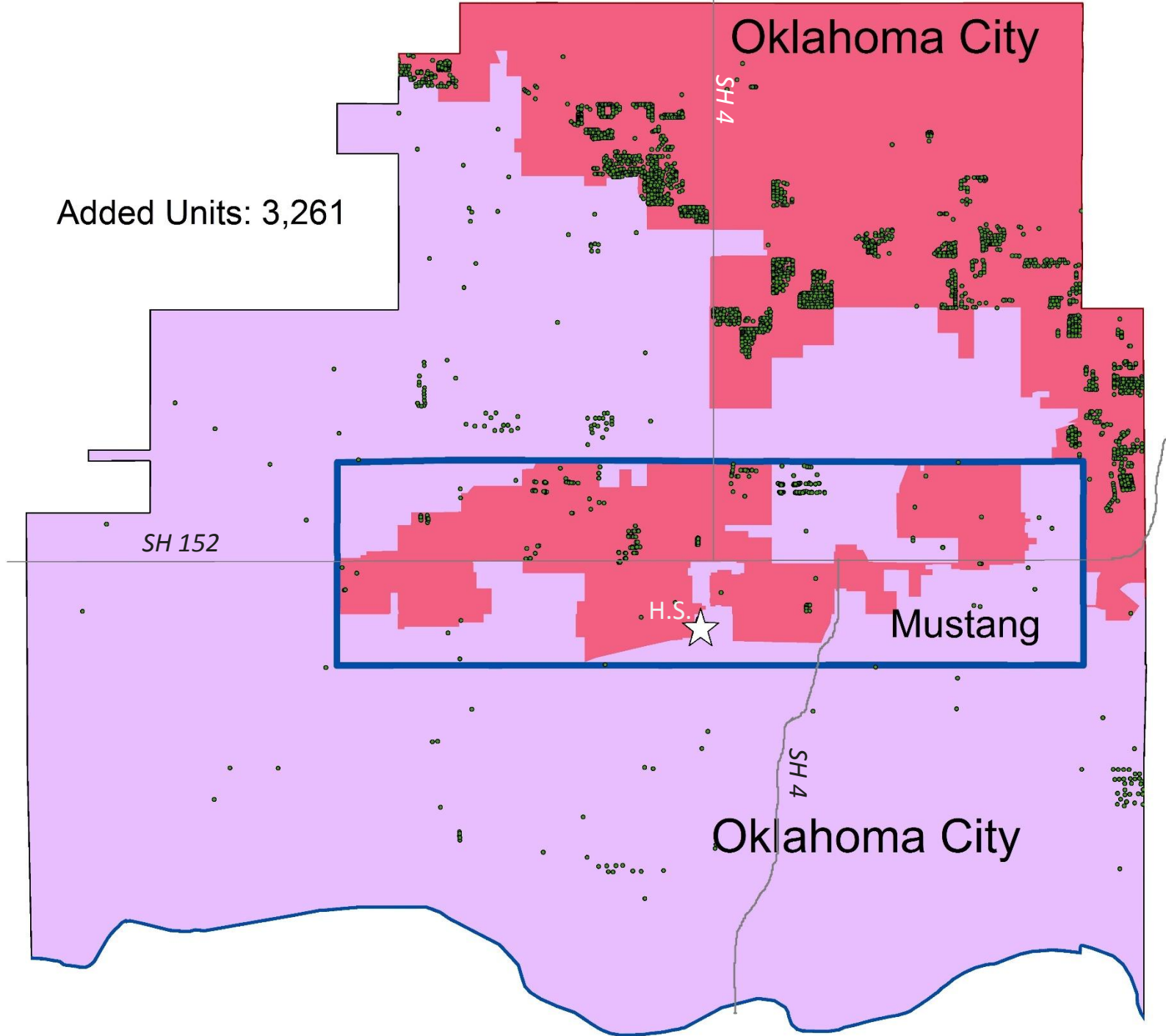
Example: Mustang School District

Over 91% of building permits in the Mustang School District fall within OKC city limits

Legend

- Blue Line = City Limits
- Red = Sewer Boundary Area
- Purple = Mustang School District
- Green Points = Building Permits
- White Star = High School Campus

Added Units: 3,261

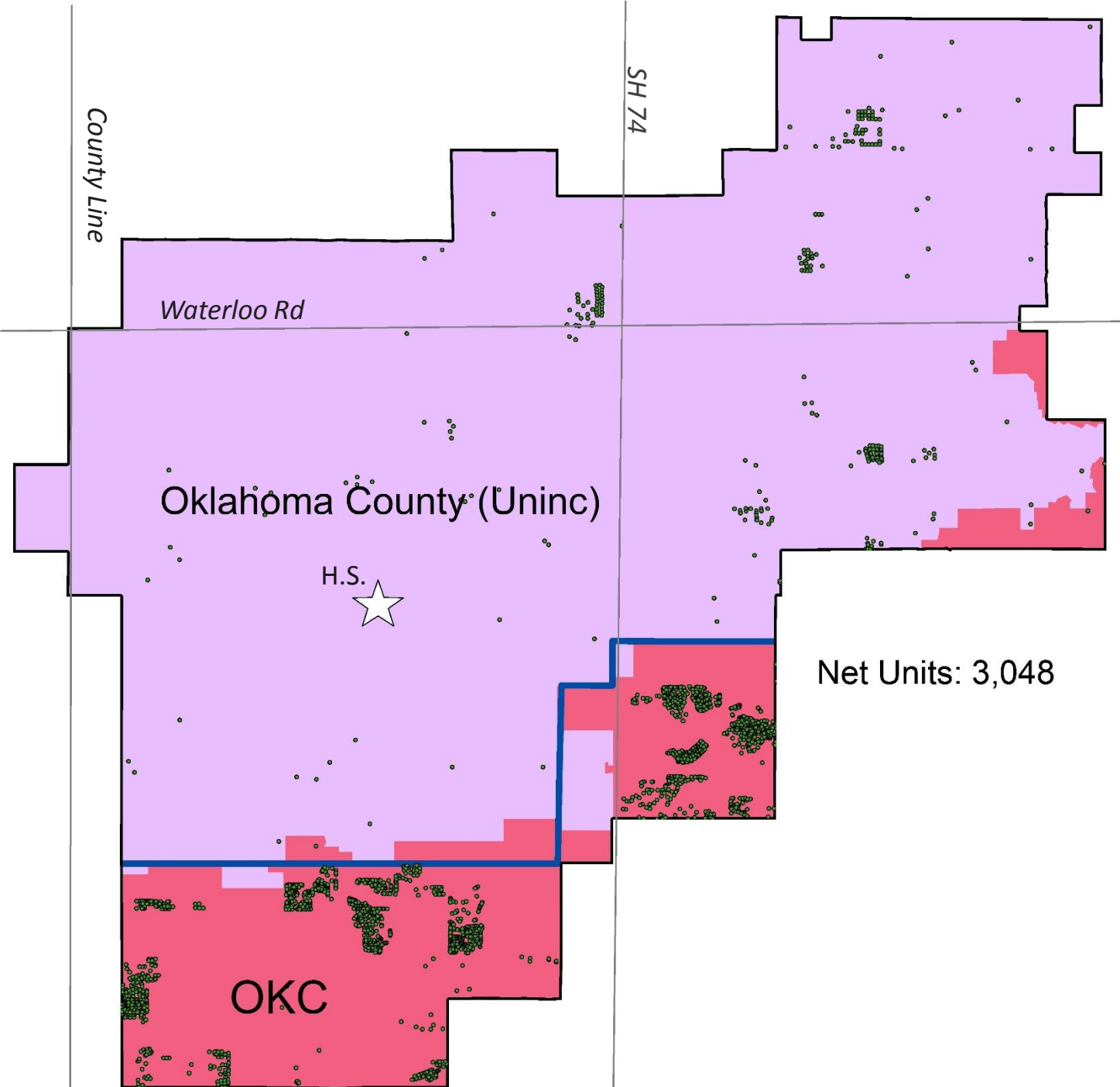


Example: Deer Creek School District

Over 91% of building permits in the Deer Creek School District fall within OKC city limits

Legend

- Blue Line = City Limits
- Red = Sewer Service
- Purple = No sewer service
- Green Points = Building Permits
- White Star = High School Campus



Conclusions

- School districts and sewer service areas are significant regional growth factors
- 82% of housing units were built inside the service area and 18% of housing units were built outside the service area (2010-2013).
- Regional growth is trending outward, with some concentrated clusters in the central cities.
 - Regional scenario planning

Questions and Comments?

- Contact Information

John Sharp

Demographics –Program Coordinator

jmsharp@acogok.org

Conrad Aaron

GIS Technician

caaron@acogok.org

ACOG - (405) 234-2264

Web site - www.acogok.org

