



City Manager Report

The City of OKLAHOMA CITY

NO: 1665

DATE: MARCH 2, 2021

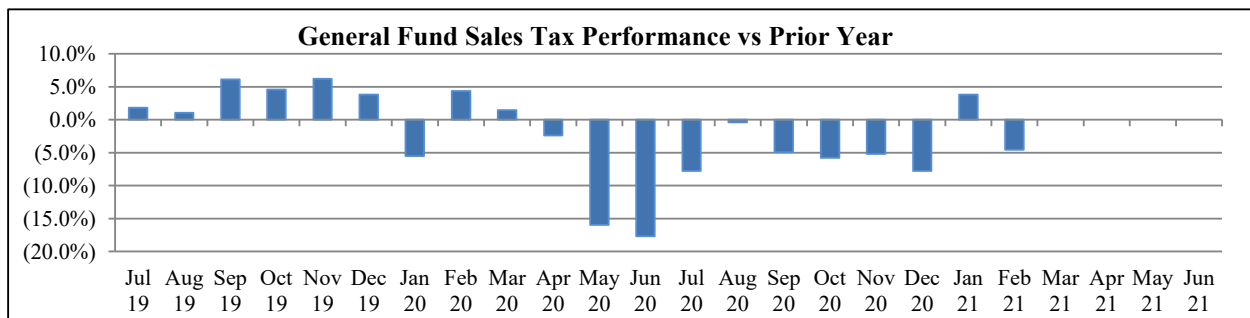
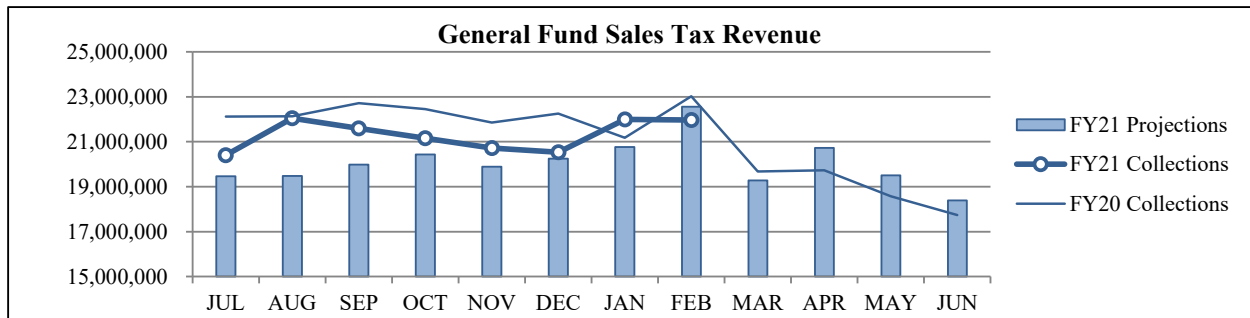
TO: THE MAYOR AND MEMBERS OF THE CITY COUNCIL

SUBJECT: FEBRUARY 2021 SALES AND USE TAX COLLECTIONS

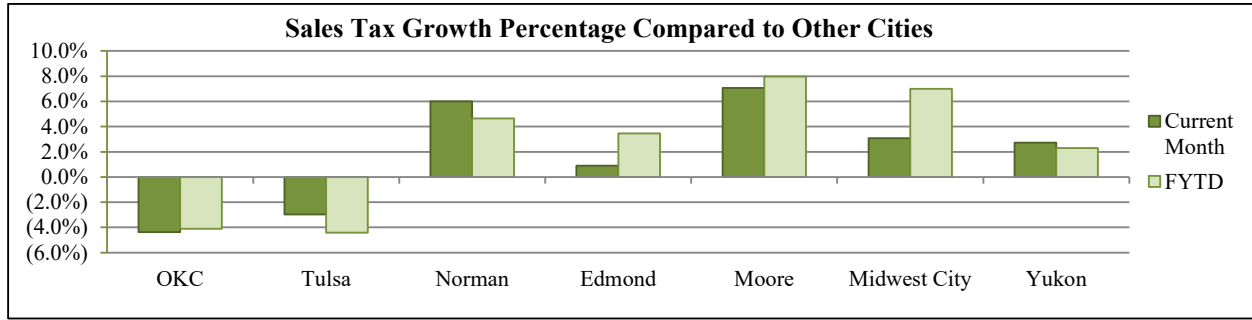
The February remittance is made up primarily of actual collections for the last half of December and estimated collections for the first half of January along with smaller amounts for corrections and reconciling amounts from prior estimates. Combined sales and use taxes for the General Fund are \$13,631,253 or 6.6% above projections for the year.

General Fund Sales Tax

SALES TAX PERFORMANCE (vs Projection)				SALES TAX PERFORMANCE (vs Prior Year)			
Feb. FY21	Projection	\$ Diff	% Change	Feb. FY21	Feb. FY20	\$ Diff	% Change
21,970,850	22,560,756	(589,906)	-2.6%	21,970,850	23,021,179	(1,050,329)	-4.6%
YTD FY21	YTD Proj	\$ Diff	% Change	YTD FY21	YTD FY20	\$ Diff	% Change
170,400,781	162,822,388	7,578,393	4.7%	170,400,781	177,733,128	(7,332,347)	-4.1%

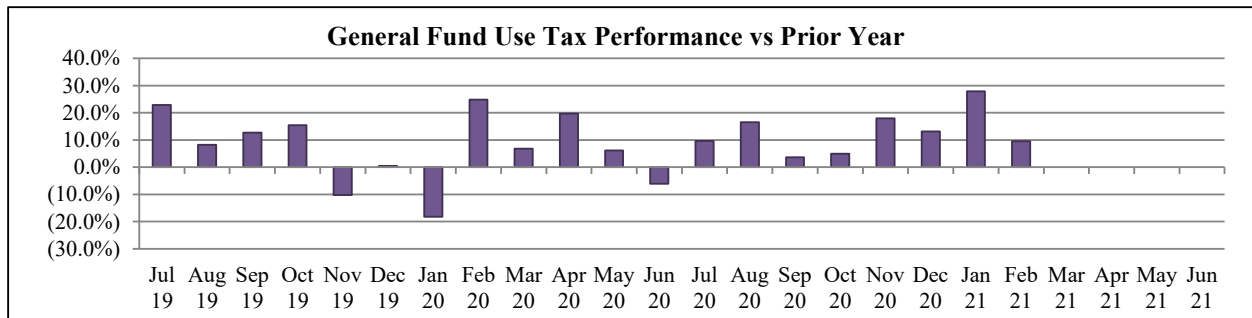
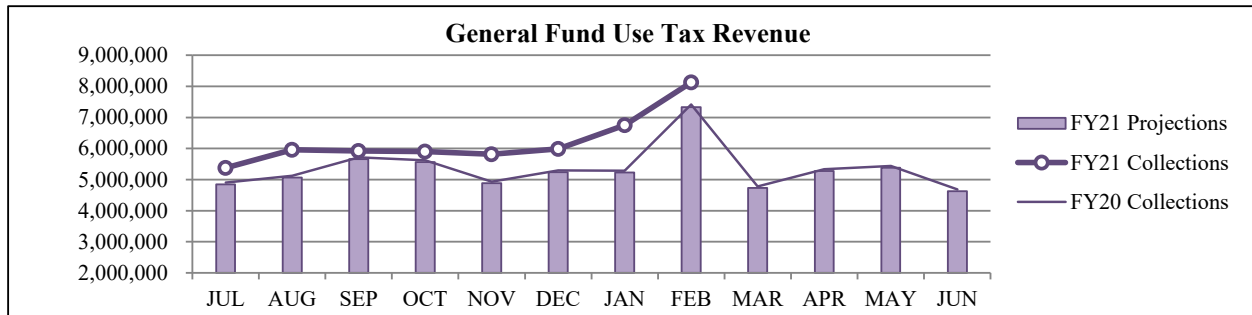


Sales Tax Comparison to Other Cities



General Fund Use Tax

USE TAX PERFORMANCE (vs Projection)				USE TAX PERFORMANCE (vs Prior Year)			
Feb. FY21	Projection	\$ Diff	% Change	Feb. FY21	Feb. FY20	\$ Diff	% Change
8,126,310	7,335,600	790,710	10.8%	8,126,310	7,416,475	709,836	9.6%
YTD FY21	YTD Proj	\$ Diff	% Change	YTD FY21	YTD FY20	\$ Diff	% Change
49,863,874	43,811,014	6,052,860	13.8%	49,863,874	44,294,027	5,569,847	12.6%



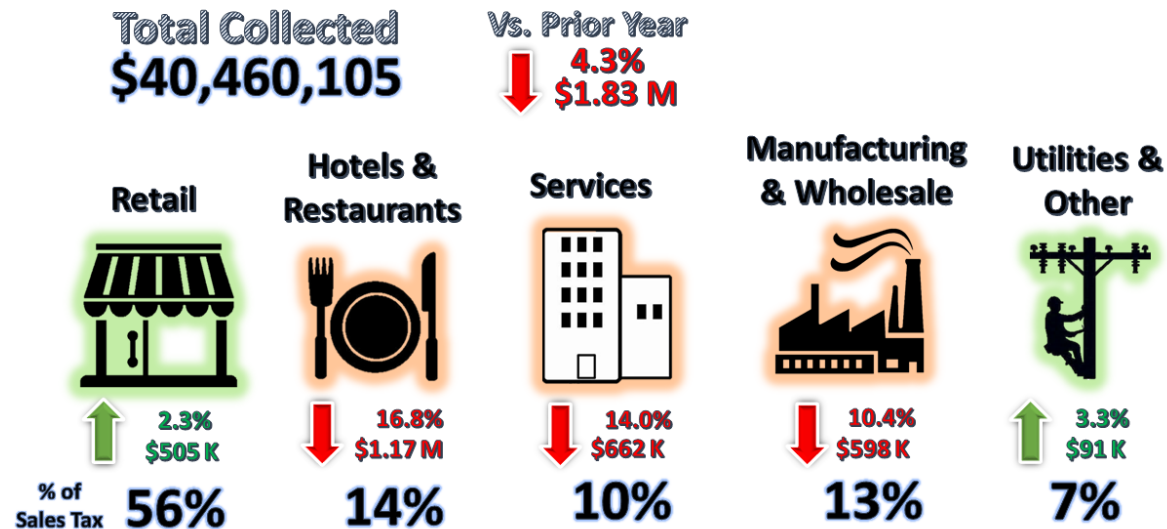
NAICS Categories Performance

The North American Industry Classification System (NAICS) is the U.S. standard for categorizing and describing types of businesses when analyzing economic information. The City groups all NAICS codes into several general categories when analyzing sales and use tax trends within the local economy. The NAICS system was last updated in 2017. More information can be found on the U.S. Census Bureau website at <https://www.census.gov/eos/www/naics/>

Sales Tax NAICS Performance

Retail comprises the largest percentage of sales tax collections at around 50%. The largest year-over-year changes for February were in the Hotels & Restaurants (down \$1.17 million), Services (down \$662,452) and Wholesale & Manufacturing (down \$597,522) categories.

SALES TAX PERFORMANCE



NAICS SALES TAX PERFORMANCE (vs Prior Year)				
NAICS Category	Feb. FY21	Feb. FY20	\$ Diff	% Change
Hotels & Restaurants	5,773,800	6,939,206	(1,165,406)	-16.8%
Services	4,072,966	4,735,417	(662,452)	-14.0%
Wholesale & Mfg.	5,121,165	5,718,686	(597,522)	-10.4%
Retail	22,654,424	22,149,851	504,573	2.3%
Utilities & Other	2,837,751	2,746,487	91,264	3.3%
Total	40,460,105	42,289,648	(1,829,543)	-4.3%

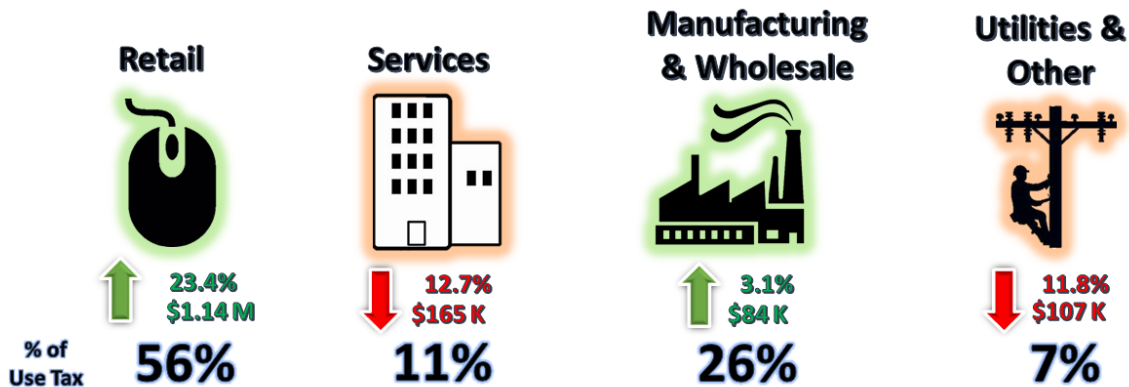
Use Tax NAICS Performance

Retail also comprises the largest percentage of use tax collections at around 40%. The largest year-over-year changes for February were in the Retail (up \$1.14 million), Services (down \$165,471) and Utilities & Other (down \$107,441) categories.

USE TAX PERFORMANCE

Total Collected
\$10,771,532

Vs. Prior Year
↑ 9.7%
\$950 K



NAICS USE TAX PERFORMANCE (vs Prior Year)				
NAICS Category	Feb. FY21	Feb. FY20	\$ Diff	% Change
Retail	6,002,514	4,863,298	1,139,216	23.4%
Services	1,133,208	1,298,679	(165,471)	-12.7%
Utilities & Other	805,253	912,694	(107,441)	-11.8%
Wholesale & Mfg.	2,830,557	2,746,421	84,136	3.1%
Total	10,771,532	9,821,092	950,440	9.7%

Staff is available should you have questions or require additional information.

Craig Freeman
City Manager