



City Manager Report

The City of OKLAHOMA CITY

NO: 1665

DATE: MARCH 2, 2021

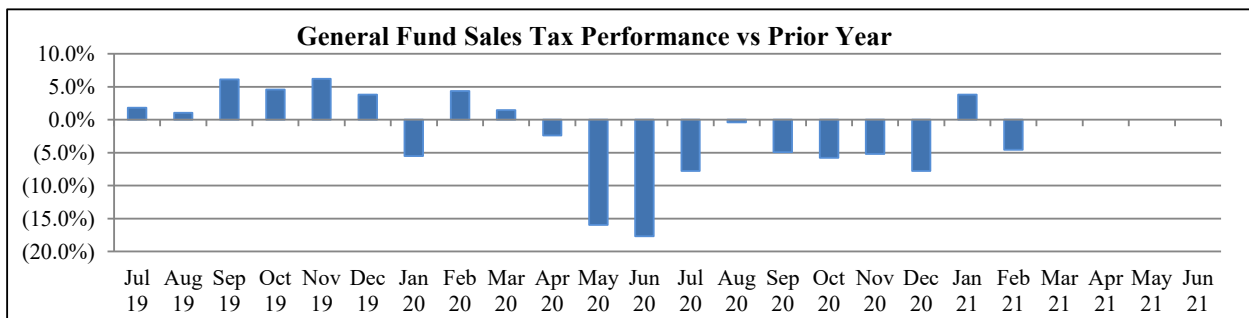
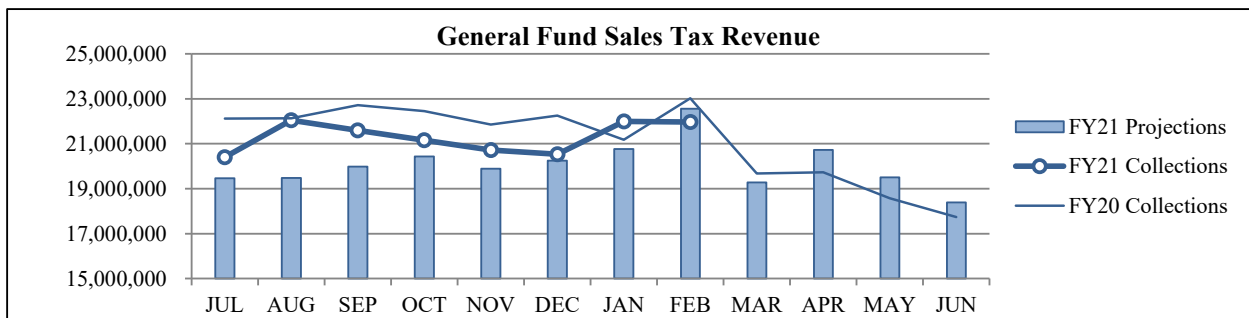
TO: THE MAYOR AND MEMBERS OF THE CITY COUNCIL

SUBJECT: FEBRUARY 2021 SALES AND USE TAX COLLECTIONS

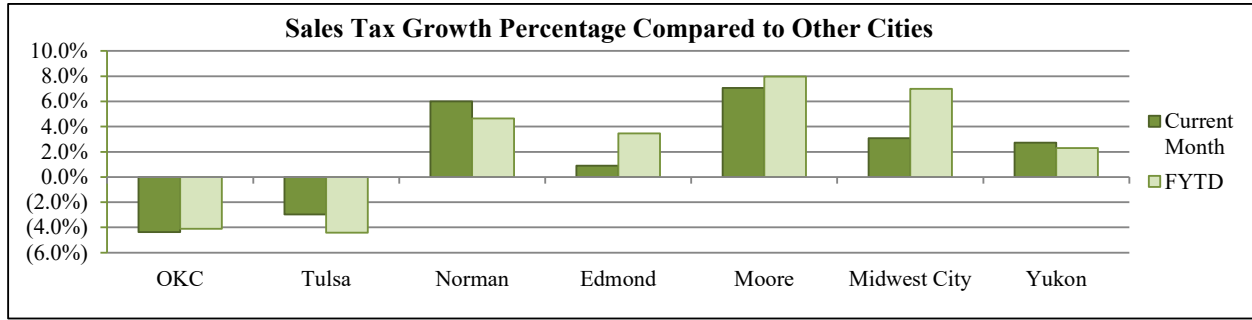
The February remittance is made up primarily of actual collections for the last half of December and estimated collections for the first half of January along with smaller amounts for corrections and reconciling amounts from prior estimates. Combined sales and use taxes for the General Fund are \$13,631,253 or 6.6% above projections for the year.

General Fund Sales Tax

SALES TAX PERFORMANCE (vs Projection)				SALES TAX PERFORMANCE (vs Prior Year)			
Feb. FY21	Projection	\$ Diff	% Change	Feb. FY21	Feb. FY20	\$ Diff	% Change
21,970,850	22,560,756	(589,906)	-2.6%	21,970,850	23,021,179	(1,050,329)	-4.6%
YTD FY21	YTD Proj	\$ Diff	% Change	YTD FY21	YTD FY20	\$ Diff	% Change
170,400,781	162,822,388	7,578,393	4.7%	170,400,781	177,733,128	(7,332,347)	-4.1%

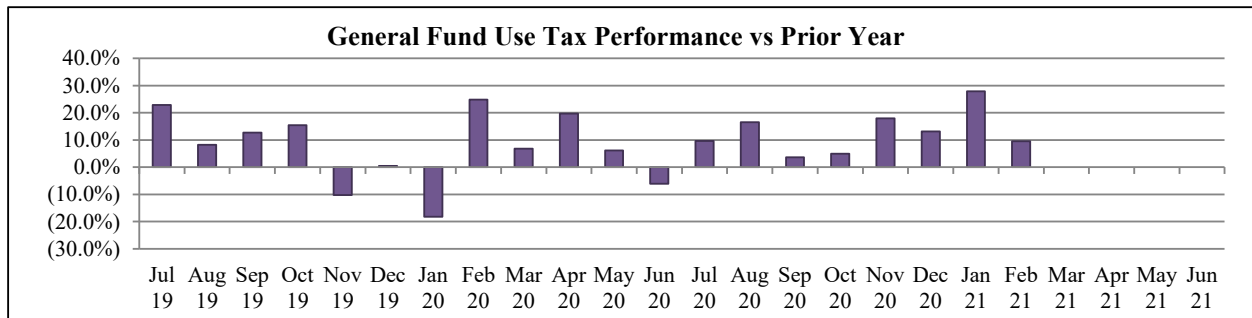
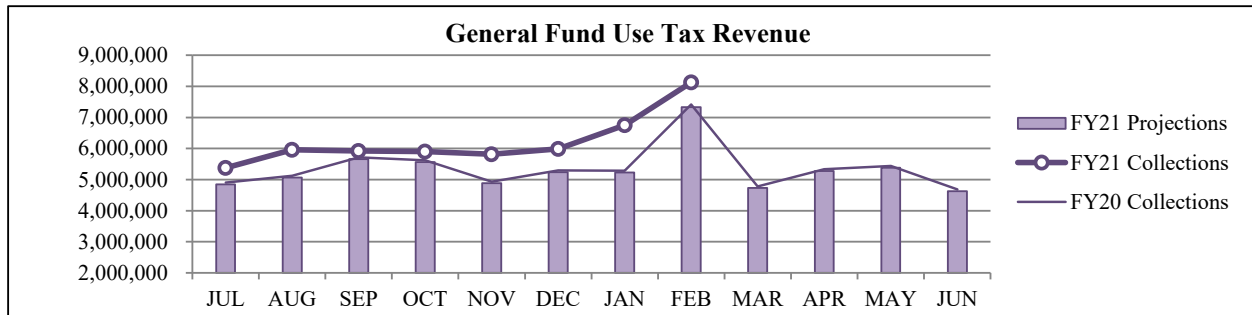


Sales Tax Comparison to Other Cities



General Fund Use Tax

USE TAX PERFORMANCE (vs Projection)				USE TAX PERFORMANCE (vs Prior Year)			
Feb. FY21	Projection	\$ Diff	% Change	Feb. FY21	Feb. FY20	\$ Diff	% Change
8,126,310	7,335,600	790,710	10.8%	8,126,310	7,416,475	709,836	9.6%
YTD FY21	YTD Proj	\$ Diff	% Change	YTD FY21	YTD FY20	\$ Diff	% Change
49,863,874	43,811,014	6,052,860	13.8%	49,863,874	44,294,027	5,569,847	12.6%



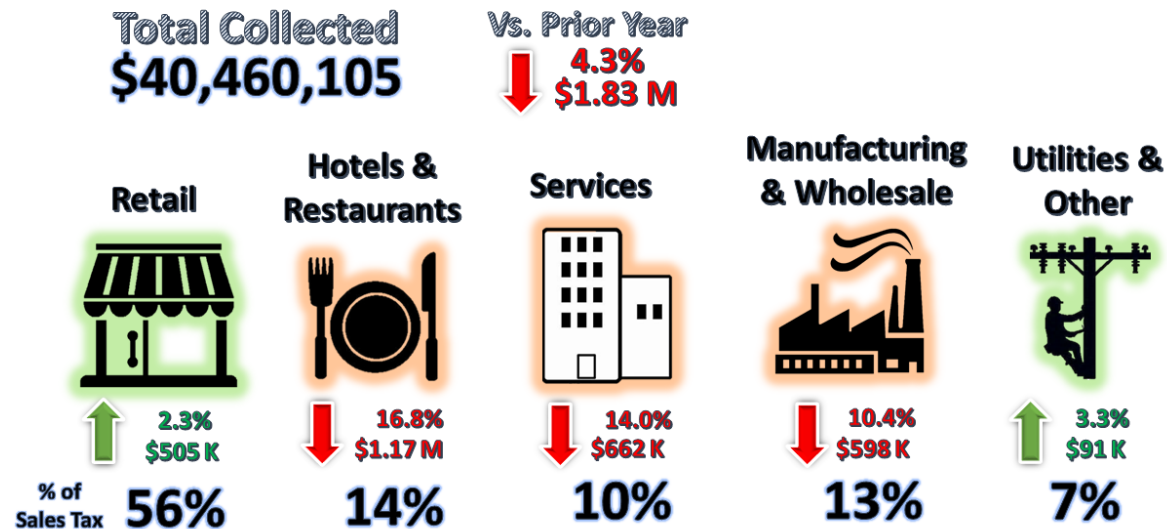
NAICS Categories Performance

The North American Industry Classification System (NAICS) is the U.S. standard for categorizing and describing types of businesses when analyzing economic information. The City groups all NAICS codes into several general categories when analyzing sales and use tax trends within the local economy. The NAICS system was last updated in 2017. More information can be found on the U.S. Census Bureau website at <https://www.census.gov/eos/www/naics/>

Sales Tax NAICS Performance

Retail comprises the largest percentage of sales tax collections at around 50%. The largest year-over-year changes for February were in the Hotels & Restaurants (down \$1.17 million), Services (down \$662,452) and Wholesale & Manufacturing (down \$597,522) categories.

SALES TAX PERFORMANCE



NAICS SALES TAX PERFORMANCE (vs Prior Year)				
NAICS Category	Feb. FY21	Feb. FY20	\$ Diff	% Change
Hotels & Restaurants	5,773,800	6,939,206	(1,165,406)	-16.8%
Services	4,072,966	4,735,417	(662,452)	-14.0%
Wholesale & Mfg.	5,121,165	5,718,686	(597,522)	-10.4%
Retail	22,654,424	22,149,851	504,573	2.3%
Utilities & Other	2,837,751	2,746,487	91,264	3.3%
Total	40,460,105	42,289,648	(1,829,543)	-4.3%

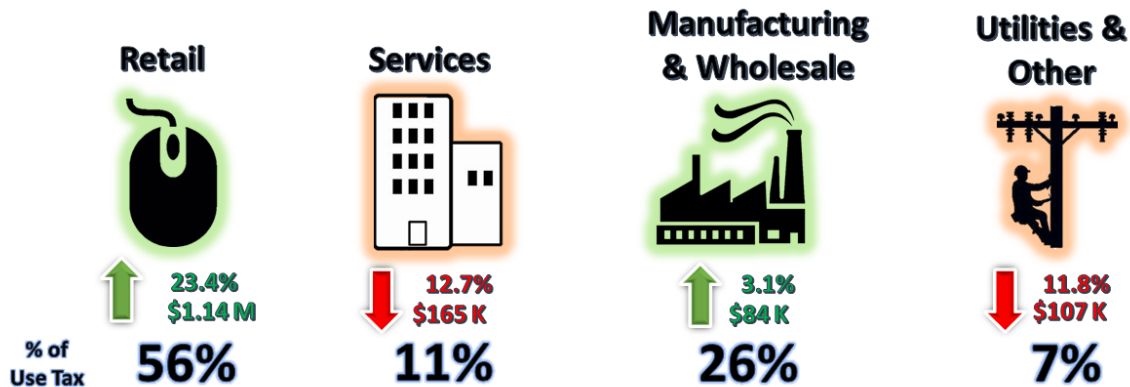
Use Tax NAICS Performance

Retail also comprises the largest percentage of use tax collections at around 40%. The largest year-over-year changes for February were in the Retail (up \$1.14 million), Services (down \$165,471) and Utilities & Other (down \$107,441) categories.

USE TAX PERFORMANCE

Total Collected
\$10,771,532

Vs. Prior Year
↑ 9.7%
\$950 K



NAICS USE TAX PERFORMANCE (vs Prior Year)				
NAICS Category	Feb. FY21	Feb. FY20	\$ Diff	% Change
Retail	6,002,514	4,863,298	1,139,216	23.4%
Services	1,133,208	1,298,679	(165,471)	-12.7%
Utilities & Other	805,253	912,694	(107,441)	-11.8%
Wholesale & Mfg.	2,830,557	2,746,421	84,136	3.1%
Total	10,771,532	9,821,092	950,440	9.7%

Staff is available should you have questions or require additional information.

Craig Freeman
City Manager

CITY OF OKLAHOMA CITY
SALES TAX COLLECTIONS
February 2021

	General Fund	General Fund MAPS 4 Program	Police Public Safety	Fire Public Safety	Zoo	Better Streets Safer City	MAPS 3	Sports Facilities Improvement	MAPS for Kids	Police/Fire Equipment	MAPS	Total Sales Tax
Current Month:												
Actual	\$21,973,047	\$9,765,799	\$3,662,174	\$3,662,174	\$1,220,725	-	-	-	-	-	-	\$40,283,919
Reallocations	(\$2,196)	(\$39,541)	\$442	\$442	\$147	\$21,337	\$19,222	\$24	\$107	-	\$18	-
Adjusted Actual	\$21,970,850	\$9,726,257	\$3,662,616	\$3,662,616	\$1,220,872	\$21,337	\$19,222	\$24	\$107	-	\$18	\$40,283,919
Projection	\$22,560,756	\$10,027,003	\$3,744,281	\$3,744,281	\$1,248,094	-	-	-	-	-	-	\$41,324,415
+/- Projection	(\$589,906)	(\$300,746)	(\$81,665)	(\$81,665)	(\$27,222)	\$21,337	\$19,222	\$24	\$107	-	\$18	(\$1,040,496)
% +/- Projection	-2.6%	-3.0%	-2.2%	-2.2%	-2.2%	-	-	-	-	-	-	-2.5%
Prior Year Actual	\$23,021,179	-	\$3,820,695	\$3,820,695	\$1,273,565	\$10,576,551	(\$388,934)	\$79	\$705	\$7	\$82	\$42,124,626
+/- Prior Year	(\$1,050,329)	\$9,726,257	(\$158,079)	(\$158,079)	(\$52,693)	(\$10,555,215)	\$408,156	(\$55)	(\$598)	(\$7)	(\$64)	(\$1,840,707)
% +/- Prior Year	-4.6%	-	-4.1%	-4.1%	-4.1%	-99.8%	-104.9%	-70.1%	-84.8%	-100.0%	-77.7%	-4.4%
Year-to-Date:												
Actual	\$170,395,561	\$75,731,360	\$28,399,260	\$28,399,260	\$9,466,420	-	-	-	-	-	-	\$312,391,862
Reallocations	\$5,220	(\$955,261)	(\$713)	(\$713)	(\$238)	\$991,514	(\$43,551)	\$312	\$1,720	\$1,094	\$616	-
Adjusted Actual	\$170,400,781	\$74,776,099	\$28,398,547	\$28,398,547	\$9,466,182	\$991,514	(\$43,551)	\$312	\$1,720	\$1,094	\$616	\$312,391,862
Projection	\$162,822,388	\$72,365,506	\$27,124,055	\$27,124,055	\$9,041,352	-	-	-	-	-	-	\$298,477,356
+/- Projection	\$7,578,393	\$2,410,593	\$1,274,492	\$1,274,492	\$424,830	\$991,514	(\$43,551)	\$312	\$1,720	\$1,094	\$616	\$13,914,506
% +/- Projection	4.7%	3.3%	4.7%	4.7%	4.7%	-	-	-	-	-	-	4.7%
Prior Year Actual	\$177,733,128	-	\$29,609,020	\$29,609,020	\$9,869,673	\$79,273,418	(\$325,568)	\$636	\$2,244	\$309	\$2,988	\$325,774,868
+/- Prior Year	(\$7,332,347)	\$74,776,099	(\$1,210,473)	(\$1,210,473)	(\$403,491)	(\$78,281,904)	\$282,017	(\$325)	(\$524)	\$785	(\$2,371)	(\$13,383,006)
% +/- Prior Year	-4.1%	-	-4.1%	-4.1%	-4.1%	-98.7%	-86.6%	-51.0%	-23.3%	253.8%	-79.4%	-4.1%
		(1)				(2)	(3)	(3)	(3)	(3)	(3)	(4)

NOTES:

- (1) The **General Fund MAPS 4 Program** tax began on April 1, 2020
- (2) The **Better Streets Safer City** tax began January 1, 2018. It replaced the MAPS 3 tax that expired December 31, 2017.
- (3) The **MAPS 3, Sports Facilities Improvement, Maps for Kids, Police/Fire Equipment** and **MAPS** taxes expired in prior years, therefore, only current year reallocation activity is presented for these funds.
- (4) The percentages listed will differ from those on the Sales and Use Tax City Manager Report slightly due to the inclusion of administrative fee, interest and reallocation on that report.

CITY OF OKLAHOMA CITY

USE TAX COLLECTIONS

February 2021

	<u>General Fund</u>	<u>MAPS 4 Program</u>	<u>Better Streets Safer City</u>	<u>MAPS 3</u>	<u>Sports Facilities Improvement</u>	<u>City & Schools</u>	<u>Police/Fire Equipment</u>	<u>MAPS</u>	<u>Total Use Tax</u>
Current Month:									
Actual	\$8,124,986	\$2,599,996	-	-	-	-	-	-	\$10,724,981
Reallocations	\$1,324	\$9,303	\$11,183	(\$21,811)	-	-	-	-	-
Adjusted Actual	\$8,126,310	\$2,609,299	\$11,183	(\$21,811)	-	-	-	-	\$10,724,981
Projection	\$7,335,600	\$2,347,392	-	-	-	-	-	-	\$9,682,992
+/- Projection	\$790,710	\$261,907	\$11,183	(\$21,811)	-	-	-	-	\$1,041,989
%+/- Projection	10.8%	11.2%	-	-	-	-	-	-	10.8%
Prior Year Actual	\$7,416,475	-	\$2,383,280	(\$10,931)	-	\$53	-	-	\$9,788,877
+/- Prior Year	\$709,836	\$2,609,299	(\$2,372,097)	(\$10,880)	-	(\$53)	-	-	\$936,105
%+/- Prior Year	9.6%	-	-99.5%	99.5%	-	-100.0%	-	-	9.6%
Year-to-Date:									
Actual	\$49,857,707	\$15,954,466	-	-	-	-	-	-	\$65,812,173
Reallocations	\$6,167	(\$16,117)	\$110,821	(\$102,508)	\$0	\$1,635	\$1	-	-
Adjusted Actual	\$49,863,874	\$15,938,350	\$110,821	(\$102,508)	\$0	\$1,635	\$1	-	\$65,812,173
Projection	\$43,811,014	\$14,019,525	-	-	-	-	-	-	\$57,830,539
+/- Projection	\$6,052,860	\$1,918,825	\$110,821	(\$102,508)	\$0	\$1,635	\$1	-	\$7,981,634
%+/- Projection	13.8%	13.7%	-	-	-	-	-	-	13.8%
Prior Year Actual	\$44,294,027	-	\$14,361,542	(\$203,502)	(\$333)	\$82	-	-	\$58,451,815
+/- Prior Year	\$5,569,847	\$15,938,350	(\$14,250,721)	\$100,994	\$333	\$1,553	\$1	-	\$7,360,357
%+/- Prior Year	12.6%	-	-99.2%	-49.6%	-100.0%	1902.5%	-	-	12.6%
		(1)	(2)	(3)	(3)	(3)	(3)	(3)	(4)

NOTES:

- (1) The **MAPS 4 Program** tax began on April 1, 2020
- (2) The **Better Streets Safer City** tax began January 1, 2018. It replaced the MAPS 3 tax that expired December 31, 2017.
- (3) The **MAPS 3, Sports Facilities Improvement, City & Schools, Police/Fire Equipment and MAPS** taxes expired in prior years, therefore, only current year reallocation activity is presented for these funds.
- (4) The percentages listed will differ from those on the Sales and Use Tax City Manager Report slightly due to the inclusion of administrative fee, interest and reallocation on that report.