

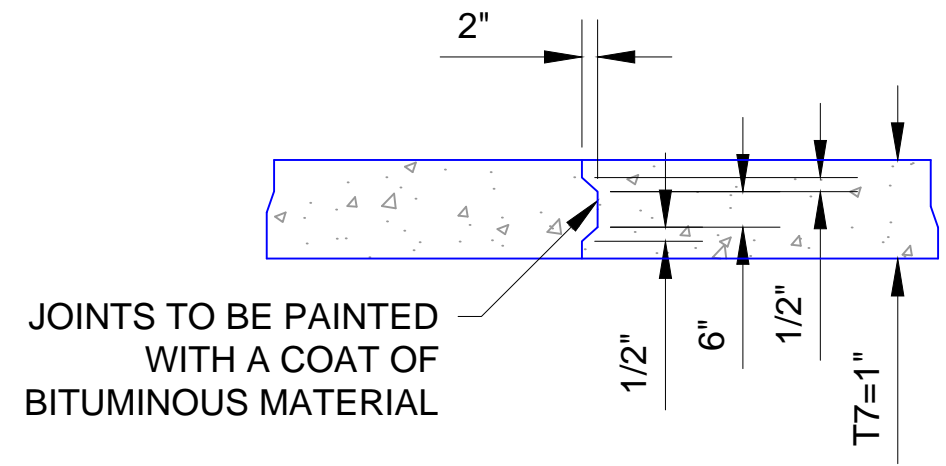
APPROVED BY: DATE: 05-02-13  
ERIC J. WENGER, P.E.  
CITY ENGINEER

DRAWN: VSC

DATE: 05-02-13

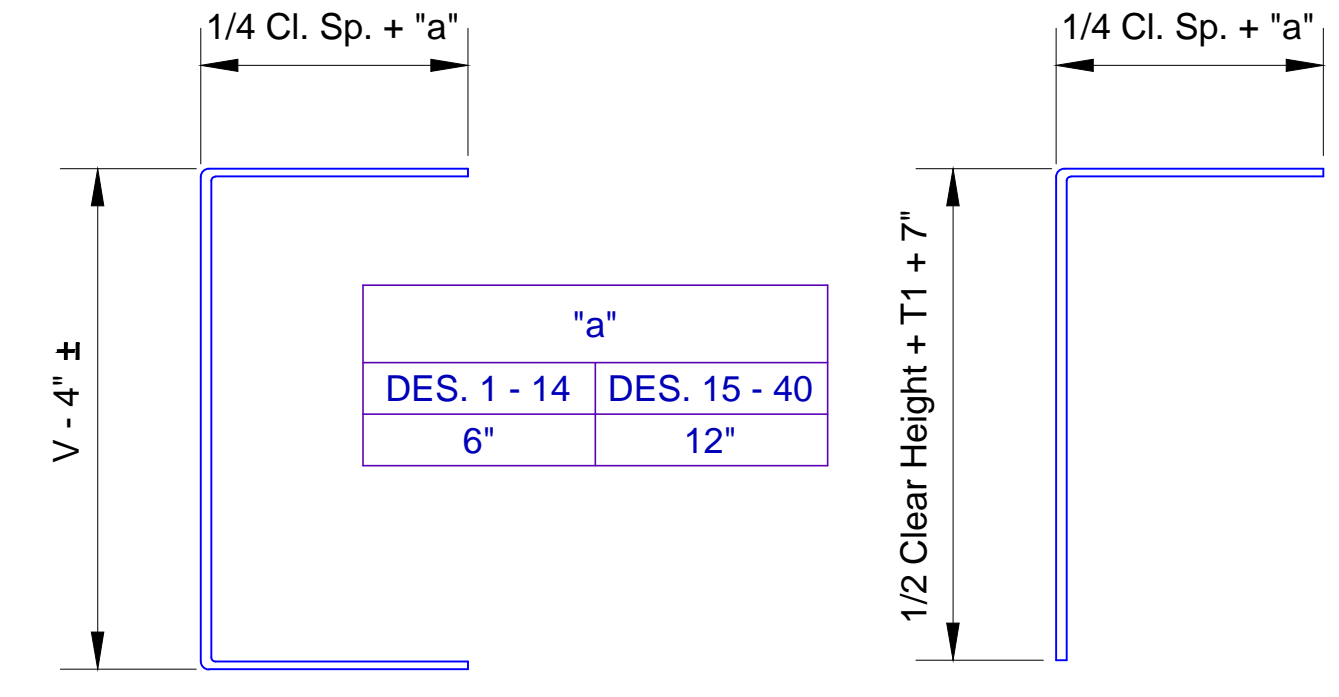
**STANDARD REINFORCED  
CONCRETE BOX - ONE CELL**

Drawing Number  
D-301



DETAIL OF CONSTRUCTION JOINT

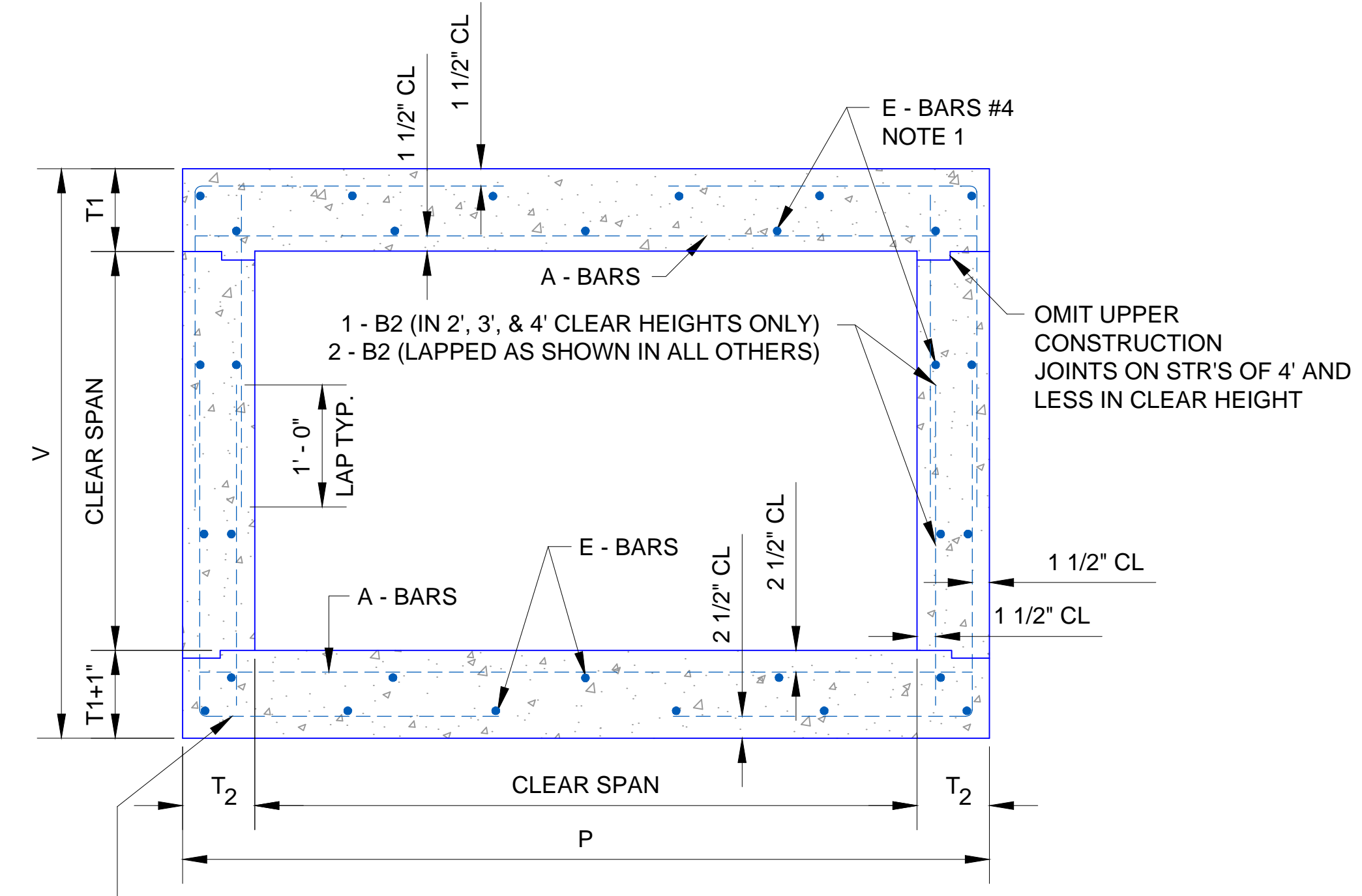
\* 0' - 9" ± ADDED TO EACH BAR FOR LAP.  
1 SPACING FOR BOTTOM OF TOP SLAB. ALL OTHERS @ 18" MAXIMUM



B-BAR (SEE TABLE FOR TOTAL LENGTH)      B1-BAR (SEE TABLE FOR TOTAL LENGTH)

"a"	
DES. 1 - 14	DES. 15 - 40
6"	12"

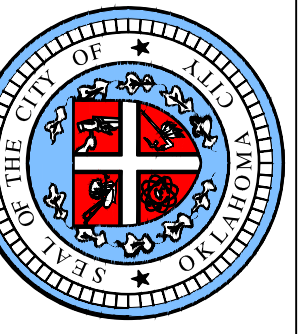
LIVE LOAD HS 20  
Note: R.C.B. DESIGN FOR FILL FROM 0' TO 8'.



TYPICAL BARREL SECTION

CLEAR SPAN	CLEAR HEIGHT	AREA SQ. FT.	DES. NO.	DIMENSIONS				REINFORCING										QUANTITIES FOR ONE PEDESTAL		QUANTITIES PER LINEAR FT. OF BARREL					
				T1	T2	V	P	A - BARS			B - BARS			B1 - BARS		B2 - BARS		E - BARS #4		STEEL - LB.	CONC. C.Y.	STEEL - LB.	CONC. C.Y.		
								SIZE	SPC.	LNG.	SIZE	SPC.	LNG.	SIZE	SPC.	LNG.	SIZE	SPC.	LENGTH					NO	1
2'	2	4	1	6"	6"	3' - 1"	3' - 0"	#5	9"	2' - 8"	#4	15"	4' - 9"				#4	18"	2 @ 2' - 9"	19	9 1/4"	30	.21	27.64	.194
3'	2	6	2	6 1/4"	6"	3' - 1 1/2"	4' - 0"	#6	10 1/2"	3' - 8"	#4	11 1/2"	5' - 4"				#4	18"	2 @ 2' - 10"	21	8"	30	.28	36.85	.241
	2.5	7.5	3	6 1/4"	6"	3' - 7 1/2"	4' - 0"	#6	10"	3' - 8"	#4	11 1/2"	5' - 10"				#4	18"	2 @ 3' - 4"	21	8"	30	.28	38.35	.259
	3	9	4	6 1/4"	6"	4' - 1 1/2"	4' - 0"	#6	10"	3' - 8"	#4	11 1/2"	6' - 4"				#4	18"	2 @ 3' - 10"	21	8"	30	.28	39.49	.278
4'	2	8	5	7"	6"	3' - 3"	5' - 0"	#6	9"	4' - 8"	#4	10 1/2"	5' - 11"				#4	18"	2 @ 2' - 11"	23	8 3/4"	40	.35	45.68	.305
	2.5	10	6	7"	6"	3' - 9"	5' - 0"	#6	9"	4' - 8"	#4	10 1/2"	6' - 5"				#4	18"	2 @ 3' - 5"	23	8 3/4"	40	.35	46.88	.324
	3	12	7	7"	6"	4' - 3"	5' - 0"	#6	9"	4' - 8"	#4	9 1/2"	6' - 11"				#4	18"	2 @ 3' - 11"	27	8 3/4"	40	.35	50.77	.342
	4	16	8	7"	6"	5' - 3"	5' - 0"	#6	8 1/2"	4' - 8"	#4	12"	7' - 11"				#4	18"	2 @ 4' - 11"	27	8 3/4"	40	.35	52.80	.379
5'	2	10	9	7 1/2"	6"	3' - 4"	6' - 0"	#6	8"	5' - 8"	#4	10 1/2"	6' - 6"				#4	18"	2 @ 3' - 0"	26	8"	50	.42	56.54	.370
	3	15	10	7 1/2"	6"	4' - 4"	6' - 0"	#6	8"	5' - 8"	#4	11"	7' - 6"				#4	18"	2 @ 4' - 0"	30	8"	50	.42	60.07	.407
	4	20	11	7 1/2"	6"	5' - 4"	6' - 0"	#6	7 1/2"	5' - 8"	#4	12"	8' - 6"				#4	18"	2 @ 5' - 0"	30	8"	50	.42	63.08	.444
	5	25	12	7 1/2"	6"	6' - 4"	6' - 0"	#6	7"	5' - 8"				#4	12"	5' - 6"	#4	18"	4 @ 3' - 9"	34	8"	50	.42	73.26	.481
6'	3	18	13	8"	6"	4' - 5"	7' - 0"	#6	7"	6' - 8"	#4	11"	8' - 1"				#4	18"	2 @ 4' - 1"	31	8 1/2"	60	.49	70.45	.478
	4	24	14	8"	7"	5' - 5"	7' - 2"	#6	7"	6' - 10"	#4	10 1/2"	9' - 1"				#4	18"	2 @ 5' - 1"	31	8 1/2"	60	.50	74.27	.548
	5	30	15	8"	8"	6' - 5"	7' - 4"	#6	7 1/2"	7' - 0"				#5	10 1/2"	6' - 3"	#4	18"	4 @ 3' - 10"	39	8 1/2"	60	.51	83.94	.631
	6	36	16	8"	8"	7' - 5"	7' - 4"	#6	7 1/2"	7' - 0"				#5	10 1/2"	6' - 9"	#4	18"	4 @ 4' - 4"	39	8 1/2"	60	.51	86.22	.680
8'	3	24	17	9"	8"	4' - 7"	9' - 4"	#7	10"	9' - 0"	#5	9 1/2"	10' - 3"				#4	18"	2 @ 4' - 3"	37	9"	80	.65	99.66	.694
	4	32	18	9"	8"	5' - 7"	9' - 4"	#7	9 1/2"	9' - 0"	#5	11"	11' - 3"				#4	18"	2 @ 5' - 3"	37	9"	80	.65	101.48	.744
	5	40	19	9"	8"	6' - 7"	9' - 4"	#7	9"	9' - 0"				#5	11"	6' - 10"	#4	18"	4 @ 3' - 11"	41	9"	80	.65	114.52	.793
	6	48	20	9"	9"	7' - 7"	9' - 6"	#7	9 1/2"	9' - 2"				#5	10"	7' - 4"	#4	18"	4 @ 4' - 5"	41	9"	80	.66	119.32	.890
	7	56	21	9"	9"	8' - 7"	9' - 6"	#7	9 1/2"	9' - 2"				#5	10"	7' - 10"	#4	18"	4 @ 4' - 11"	45	9"	80	.66	125.38	.945
8	64	22	9"	9"	9' - 7"	9' - 6"	#7	9"	9' - 2"				#5	10"	8' - 4"	#4	18"	4 @ 5' - 4"	49	9"	80	.66	133.91	1.001	
10'	3	30	23	10"	8"	4' - 9"	11' - 4"	#7	9"	11' - 0"	#5	8 1/2"	11' - 5"				#4	18"	2 @ 4' - 5"	47	8 3/4"	90	.79	128.89	.882
	4	40	24	10"	8"	5' - 9"	11' - 4"	#7	8 1/2"	11' - 0"	#5	9"	12' - 5"				#4	18"	2 @ 5' - 5"	47	8 3/4"	90	.79	134.25	.931
	5	50	25	10"	8"	6' - 9"	11' - 4"	#7	8"	11' - 0"				#5	10"	7' - 5"	#4	18"	4 @ 4' - 0"	51	8 3/4"	90	.79	145.78	.981
	6	60	26	10"	9"	7' - 9"	11' - 6"	#7	8 1/2"	11' - 2"				#5	9"	7' - 11"	#4	18"	4 @ 4' - 6"	51	8 3/4"	90	.80	150.58	1.078
	7	70	27	10"	9"	8' - 9"	11' - 6"	#7	8 1/2"	11' - 2"				#5	9 1/2"	8' - 5"	#4	18"	4 @ 5' - 0"	55	8 3/4"	90	.80	154.43	1.133
	8	80	28	10"	9"	9' - 9"	11' - 6"	#7	8"	11' - 2"				#5	10"	8' - 11"	#4	18"	4 @ 5' - 6"	59	8 3/4"	90	.80	162.32	1.189
	9	90	29	10"	9"	10' - 9"	11' - 6"	#7	8"	11' - 2"				#5	10"	9' - 5"	#4	15"	4 @ 6' - 0"	59	8 3/4"	90	.80	167.86	1.244
	10	100	30	10"	9"	11' - 9"	11' - 6"	#7	8"	11' - 2"				#5	10"	9' - 11"	#4	9 1/2"	4 @ 6' - 6"	63	8 3/4"	90	.80	182.15	1.300
12	120	31	10"	9"	13' - 9"	11' - 6"	#7	8"	11' - 2"				#5	10"	10' - 11"	#5	8 1/2"	4 @ 7' - 6"	67	8 3/4"	90	.80	212.06	1.411	
12'	5	60	32	11"	9"	6' - 11"	13' - 6"	#8	10 1/2"	13' - 2"				#5	8 1/2"	8' - 0"	#4	18"	4 @ 4' - 1"	54	9 1/4"	110	.94	170.78	1.235
	6	72	33	11"	9"	7' - 11"	13' - 6"	#8	10 1/2"	13' - 2"				#5	9"	8' - 6"	#4	18"	4 @ 4' - 7"	54	9 1/4"	110	.94	171.86	1.290
	7	84	34	11"	9"	8' - 11"	13' - 6"	#8	10 1/2"	13' - 2"				#5	9 1/2"	9' - 0"	#4	18"	4 @ 5' - 1"	58	9 1/4"	110	.94	179.57	1.346
	8	96	35	11"	9"	9' - 11"	13' - 6"	#8	10"	13' - 2"				#5	9 1/2"	9' - 6"	#4	18"	4 @ 5' - 7"	62	9 1/4"	110	.94	185.78	1.401
	9	108	36	11"	9"	10' - 11"	13' - 6"	#8	10"	13' - 2"				#5	9 1/2"	10' - 0"	#4	12"	4 @ 6' - 1"	66	9 1/4"	110	.94	197.39	1.457
	10	120	37	11"	10"	11' - 11"	13' - 8"	#8	10"	13' - 4"				#5	9"	10' - 6"	#4	12"	4 @ 6' - 7"	66	9 1/4"	110	.94	205.54	1.586
	11	132	38	11"	10"	12' - 11"	13' - 8"	#8	10"	13' - 4"				#5	9"	11' - 0"	#4	11"	4 @ 7' - 1"	70	9 1/4"	110	.95	214.05	1.648
	12	144	39	11"	10"	13' - 11"	13' - 8"	#8	10"	13' - 4"				#5	8 1/2"	11' - 6"	#5	11 1/2"	4 @ 7' - 7"	70	9 1/4"	110	.95	232.96	1.709
14	168	40	11"	11"	15' - 11"	13' - 10"	#8	10 1/2"	13' - 6"				#6	10"	12' - 6"	#5	8 1/2"	4 @ 8' - 7"	78	9 1/4"	110	.96	275.12	1.931	

NOTES:  
ALL CONSTRUCTION AND MATERIALS SHALL BE IN ACCORDANCE WITH THE OKLAHOMA CITY STANDARD SPECIFICATIONS.  
REINFORCING STEEL IN BOTTOM SLAB (FOOTING) SHALL BE SUPPORTED ON BAR CHAIRS. CHAIRS SHALL BE SUPPORTED ON TIMBER PLANK OR CLASS "C" CONCRETE STRIPS PLACED AT 4" CENTERS.  
REINFORCING STEEL IN TOP SLAB SHALL BE SUPPORTED ON SLAB SPACERS.  
REINFORCING STEEL IN THE WALLS SHALL BE HELD IN PLACE BY METAL CHAIRS. MAXIMUM SPACING OF THE CHAIRS SHALL BE 6".  
COST OF METAL CHAIRS, WOOD PLANK OR CONCRETE STRIPS SHALL BE INCLUDED IN OTHER ITEMS OF WORK.

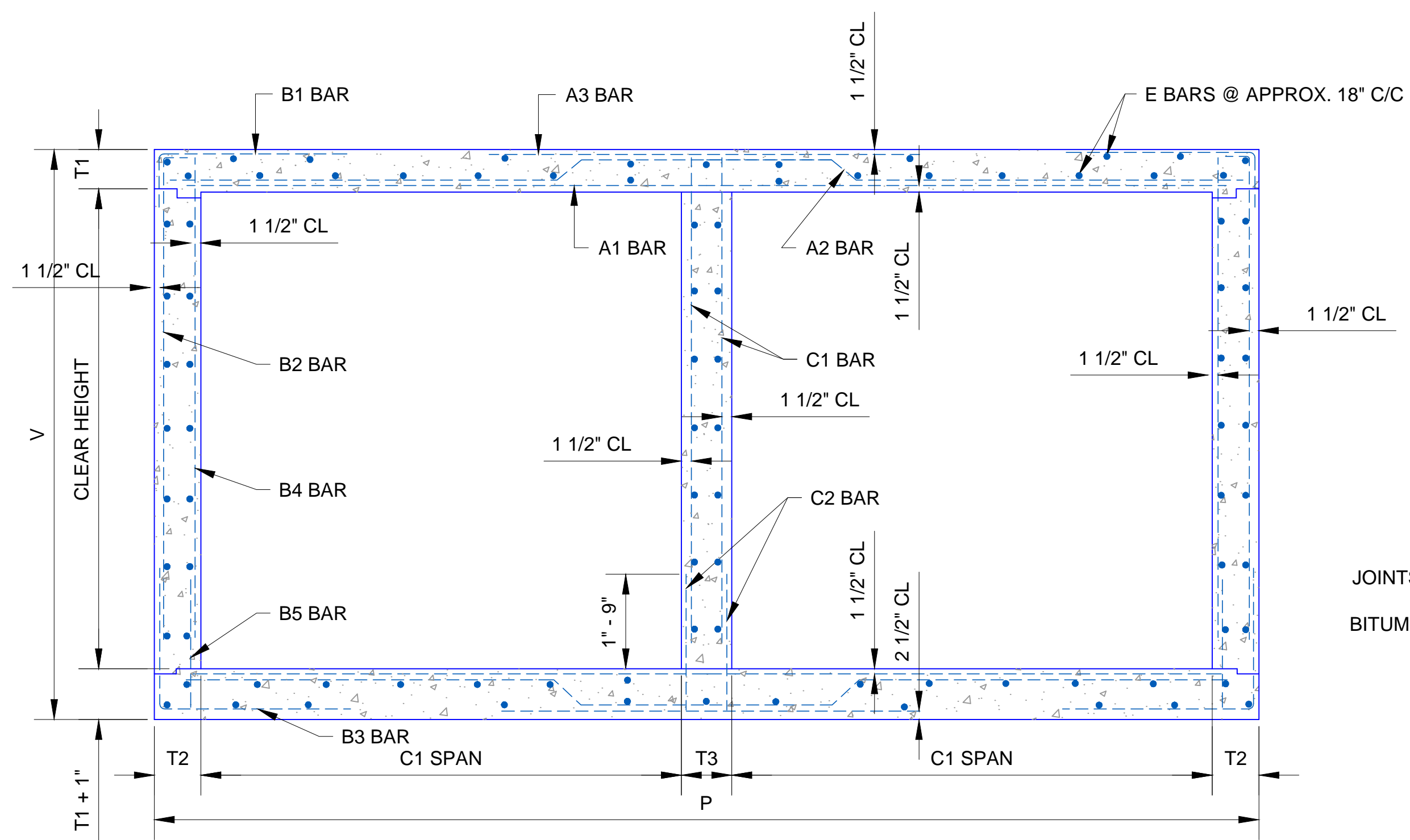


APPROVED BY: DATE: 05-02-13  
ERIC J. WENGER, P.E.  
CITY ENGINEER

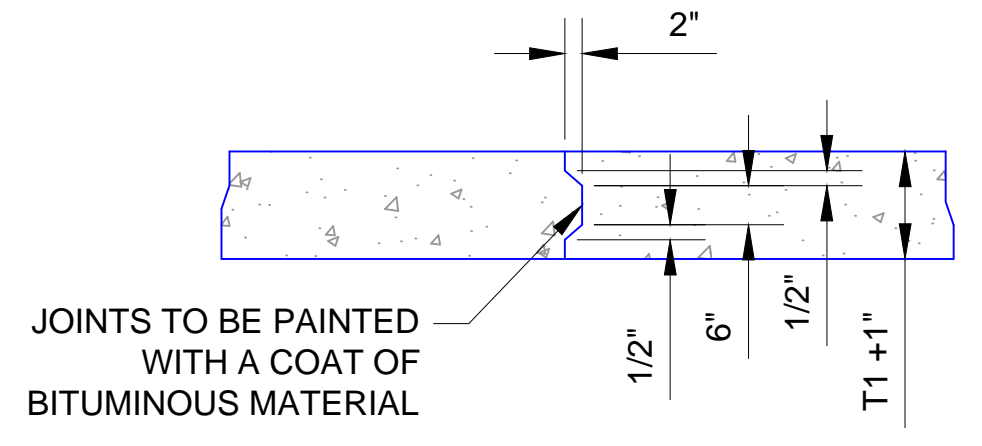
DRAWN: VSC  
DATE: 05-02-13

**STANDARD REINFORCED  
CONCRETE BOX - TWO CELL**

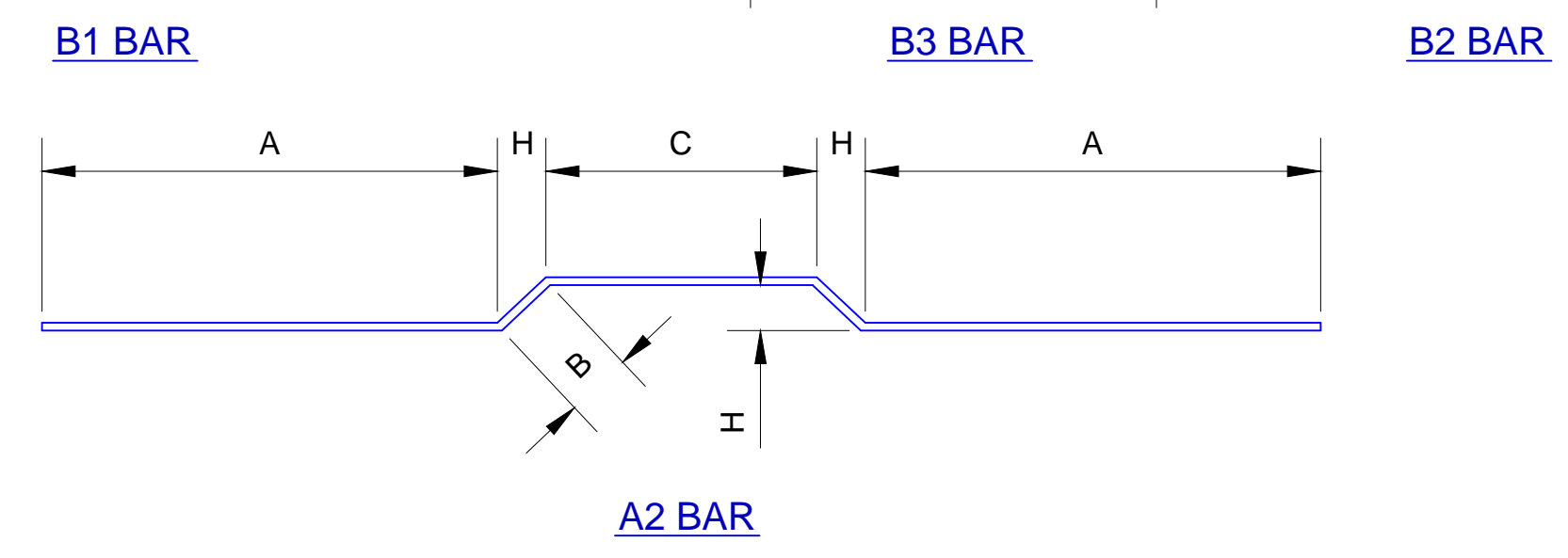
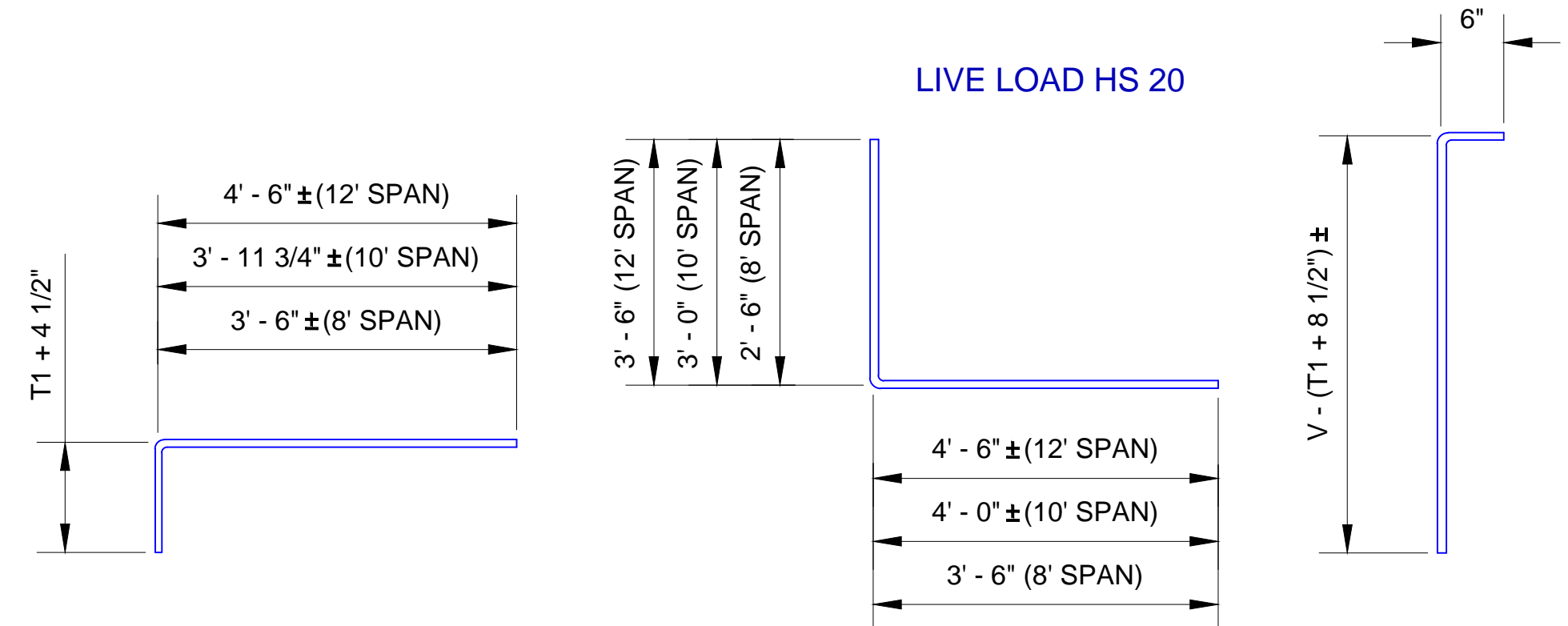
Drawing Number  
D-302



TYPICAL BARREL SECTION



DETAIL OF CONSTRUCTION JOINT

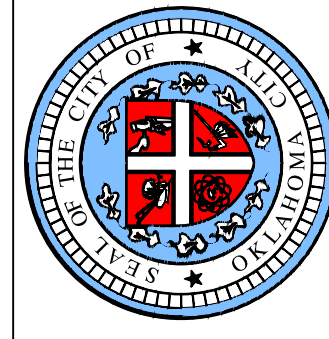


CLEAR SPAN	CLEAR HEIGHT	A2 BAR						
		A	B	C	H	SIZE	SPAC.	LENGTH
8'	4'	6' - 5 3/4"	7 3/4"	4' - 0"	5 1/2"	#5	12"	18' - 3"
	5'	6' - 5 3/4"	7 3/4"	4' - 0"	5 1/2"	#5	12"	18' - 3"
	6'	6' - 5 3/4"	7 3/4"	4' - 0"	5 1/2"	#5	12"	18' - 3"
10'	4'	7' - 11"	9 1/2"	5' - 0"	6 3/4"	#6	11"	22' - 5"
	6'	7' - 11"	9 1/2"	5' - 0"	6 3/4"	#6	11"	22' - 5"
	8'	7' - 11"	9 1/2"	5' - 0"	6 3/4"	#6	11"	22' - 5"
	10'	8' - 0"	9 1/2"	5' - 0"	6 3/4"	#6	11"	22' - 7"
12'	4'	8' - 1"	9 1/2"	5' - 0"	6 3/4"	#6	11"	22' - 9"
	6'	9' - 3"	12"	6' - 0"	8 1/2"	#6	11"	26' - 6"
	8'	9' - 3"	12"	6' - 0"	8 1/2"	#6	11"	26' - 6"
10'	10'	9' - 4 1/2"	12"	6' - 0"	8 1/2"	#6	11"	26' - 9"
	12'	9' - 6"	12"	6' - 0"	8 1/2"	#6	11"	27' - 0"

NOTES:  
ALL CONSTRUCTION AND MATERIALS SHALL BE IN ACCORDANCE WITH THE OKLAHOMA CITY STANDARD SPECIFICATIONS.  
REINFORCING STEEL IN BOTTOM SLAB (FOOTING) SHALL BE SUPPORTED ON BAR CHAIRS. CHAIRS SHALL BE SUPPORTED ON TIMBER PLANKS OR CLASS "C" CONCRETE STRIPS PLACED AT 4' CENTERS.  
REINFORCING STEEL IN TOP SLAB SHALL BE SUPPORTED ON SLAB SPACERS.  
REINFORCING STEEL IN WALLS SHALL BE HELD IN PLACE BY METAL CHAIRS. MAXIMUM SPACING OF THE CHAIRS SHALL BE 6".  
COST OF METAL CHAIRS, WOOD PLANK OR CONCRETE STRIPS SHALL BE INCLUDED IN OTHER ITEMS OF WORK.

FILL	CLEAR SPAN	CLEAR HEIGHT	AREA SQ. FT.	DIMENSIONS					REINFORCING STEEL																				QUANTITIES PER LINEAR FT. OF BARREL		QUANTITIES FOR ONE PEDESTAL																															
				T1	T2	T3	V	P	A1					A3					B1					B2					B3					B4					B5					C1					C2					E4					STEEL-LBS	CONC-C.Y.	STEEL-LBS	CONC-C.Y.
				SIZE	SPAC.	LENGTH	SIZE	SPAC.	LENGTH	SIZE	SPAC.	LENGTH	SIZE	SPAC.	LENGTH	SIZE	SPAC.	LENGTH	SIZE	SPAC.	LENGTH	SIZE	SPAC.	LENGTH	SIZE	SPAC.	LENGTH	SIZE	SPAC.	LENGTH	SIZE	SPAC.	LENGTH	SIZE	SPAC.	# of BARS																										
8'	8'	4'	64	8 1/2"	9"	9"	5' - 6"	18' - 3"	#4	12"	17' - 11"	#6	12"	8' - 0"	#5	12"	4' - 7"	#5	12"	4' - 7"	#5	12"	6' - 0"	#4	12"	4' - 0"	#4	12"	2' - 6"	#4	12"	4' - 0"	#4	12"	2' - 6"	#4	18"	66	179.13	1.347	150	1.27																				
		5'	80	8 1/2"	9"	9"	6' - 6"	18' - 3"	#4	12"	17' - 11"	#6	12"	8' - 0"	#5	12"	4' - 7"	#5	12"	5' - 7"	#5	12"	6' - 0"	#4	12"	5' - 0"	#4	12"	2' - 6"	#4	12"	5' - 0"	#4	12"	2' - 6"	#4	18"	66	183.89	1.431	150	1.27																				
		6'	96	8 1/2"	9"	9"	7' - 6"	18' - 3"	#4	12"	17' - 11"	#6	12"	8' - 0"	#5	12"	4' - 7"	#5	12"	6' - 7"	#5	12"	6' - 0"	#4	12"	6' - 0"	#4	12"	2' - 6"	#4	12"	6' - 0"	#4	12"	2' - 6"	#4	18"	72	192.66	1.514	150	1.27																				
8'	10'	4'	80	9 3/4"	9"	9"	5' - 8 1/2"	22' - 3"	#4	11"	21' - 11"	#6	11"	9' - 0"	#5	8"	5' - 2"	#5	8"	4' - 8"	#5	8"	7' - 0"	#4	12"	4' - 0"	#4	12"	3' - 0"	#4	12"	4' - 0"	#4	12"	3' - 0"	#4	18"	76	257.04	1.741	180	1.55																				
		6'	120	9 3/4"	9"	9"	7' - 8 1/2"	22' - 3"	#4	11"	21' - 11"	#6	11"	9' - 0"	#5	8"	5' - 2"	#5	8"	6' - 8"	#5	8"	7' - 0"	#4	12"	6' - 0"	#4	12"	3' - 0"	#4	12"	6' - 0"	#4	12"	3' - 0"	#4	18"	82	272.65	1.908	180	1.55																				
		8'	160	9 3/4"	9"	9"	9' - 8 1/2"	22' - 3"	#4	11"	21' - 11"	#6	11"	9' - 0"	#5	8"	5' - 2"	#5	8"	8' - 8"	#5	8"	7' - 0"	#4	12"	8' - 0"	#4	12"	3' - 0"	#4	12"	8' - 0"	#4	12"	3' - 0"	#4	18"	88	288.22	2.074	180	1.55																				
		10'	200	9 3/4"	10"	10"	11' - 8 1/2"	22' - 6"	#4	11"	22' - 2"	#6	11"	9' - 0"	#6	10"	5' - 2"	#6	10"	10' - 8"	#6	10"	7' - 0"	#4	12"	10' - 0"	#4	12"	3' - 0"	#4	12"	10' - 0"	#4	12"	3' - 0"	#4	18"	100	319.65	2.350	180	1.56																				
8'	12'	4'	240	9 3/4"	11"	11"	13' - 8 1/2"	22' - 9"	#4	11"	22' - 5"	#6	11"	9' - 0"	#6	8"	5' - 2"	#6	8"	12' - 8"	#6	8"	7' - 0"	#4	12"	12' - 0"	#4	12"	3' - 0"	#4	12"	12' - 0"	#4	12"	3' - 0"	#4	18"	106	359.51	2.662	180	1.58																				
		6'	144	11 1/2"	9"	9"	8' - 0"	26' - 3"	#4	11"	25' - 11"	#7	11"	10' - 0"	#6	8 1/2"	5' - 10"	#6	8 1/2"	6' - 10"	#6	8 1/2"	8' - 0"	#4	12"	6' - 0"	#4	12"	3' - 6"	#4	12"	6' - 0"	#4	12"	3' - 6"	#4	18"	86	339.70	2.44	210	1.82																				
		8'	192	11 1/2"	9"	9"	10' - 0"	26' - 3"	#4	11"	25' - 11"	#7	11"	10' - 0"	#6	8 1/2"	5' - 10"	#6	8 1/2"	8' - 10"	#6	8 1/2"	8' - 0"	#4	12"	8' - 0"	#4	12"	3' - 6"	#4	12"	8' - 0"	#4	12"	3' - 6"	#4	18"	92	357.54	2.61	210	1.82																				
		10'	240	11 1/2"	10"	10"	12' - 0"	26' - 6"	#4	11"	26' - 2"	#7	11"	10' - 0"	#6	8 1/2"	5' - 10"	#6	8 1/2"	10' - 10"	#6	8 1/2"	8' - 0"	#4	12"	10' - 0"	#4	12"	3' - 6"	#4	12"	10' - 0"	#4	12"	3' - 6"	#4	18"	104	380.56	2.89	210	1.84																				
8'	12'	12'	288	11 1/2"	11"	11"	14' - 0"	26' - 9"	#4	11"	26' - 5"	#7	11"	10' - 0"	#7	10 1/2"	5' - 10"	#7	10 1/2"	12' - 10"	#7	10 1/2"	8' - 0"	#4	12"	12' - 0"	#4	12"	3' - 6"	#4	12"	12' - 0"	#4	12"	3' - 6"	#4	18"	110	407.05	3.20	220	1.86																				



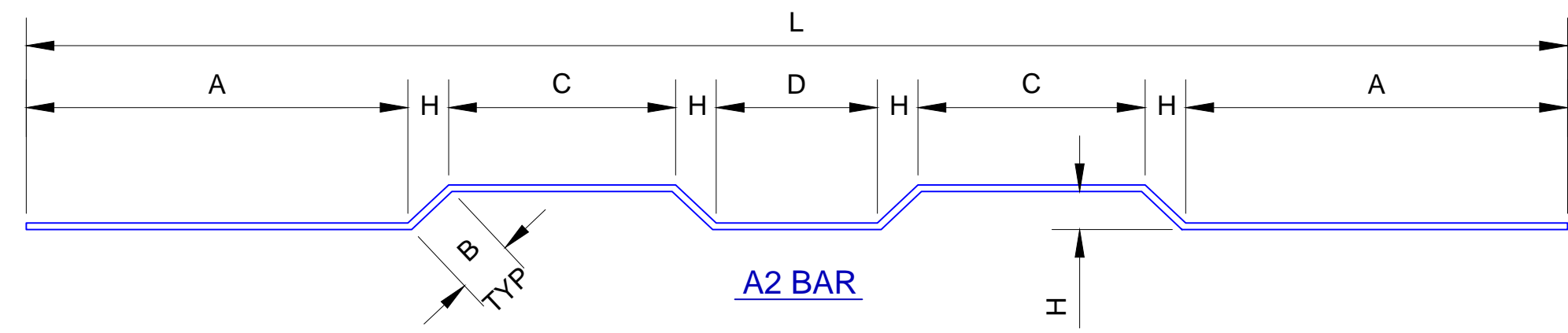
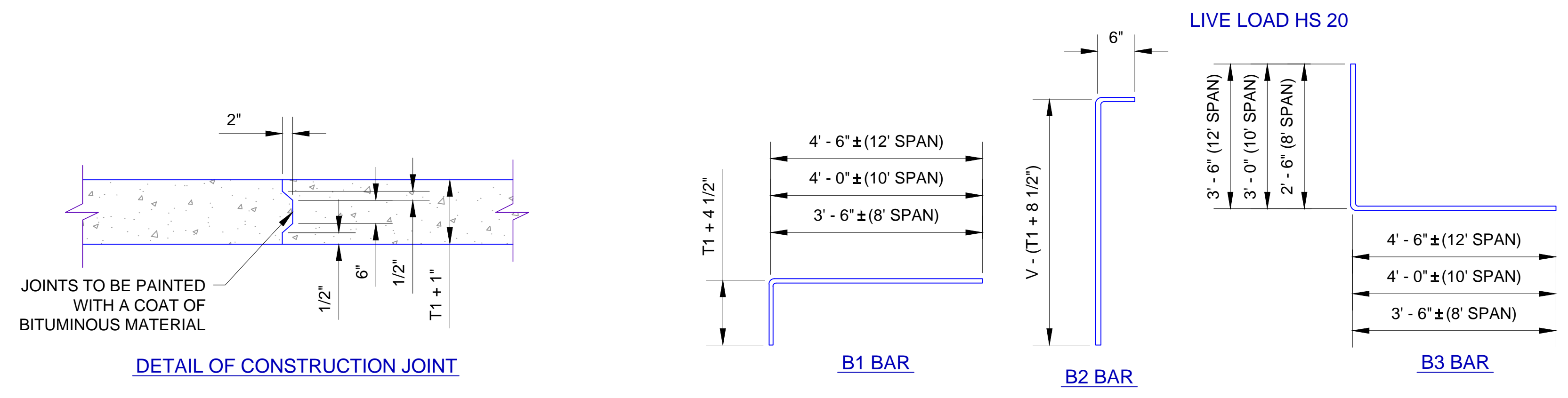


APPROVED BY: *[Signature]* DATE: 05-02-13  
ERIC J. WENGER, P.E.  
CITY ENGINEER

DRAWN: VSC  
DATE: 05-02-13

**STANDARD TYPICAL SECTIONS  
MISCELLANEOUS DETAILS**

Drawing Number  
D-303



CLEAR SPAN	CLEAR HEIGHT	AREA SQ. FT.	A2									
			A	B	C	D	H	L	SIZE	SPAC.	LENGTH	
8'	4'	96	6' - 8 3/4"	7 1/2"	3' - 5 1/2"	4' - 4 1/2"	5 1/2"	26' - 9"	#5	12"	27' - 5"	
	6'	144	6' - 8 3/4"	7 1/2"	3' - 5 1/2"	4' - 4 1/2"	5 1/2"	26' - 9"	#5	12"	27' - 5"	
	8'	196	6' - 8 3/4"	7 1/2"	3' - 5 1/2"	4' - 4 1/2"	5 1/2"	26' - 9"	#5	12"	27' - 5"	
10'	4'	120	8' - 3 3/4"	9 1/2"	4' - 3"	5' - 4 1/2"	6 3/4"	32' - 9"	#6	11"	33' - 8"	
	6'	180	8' - 3 3/4"	9 1/2"	4' - 3"	5' - 4 1/2"	6 3/4"	32' - 9"	#6	11"	33' - 8"	
	8'	240	8' - 3 3/4"	9 1/2"	4' - 3"	5' - 4 1/2"	6 3/4"	32' - 9"	#6	11"	33' - 8"	
	10'	300	8' - 5"	9 1/2"	4' - 3 1/2"	5' - 5"	6 3/4"	33' - 1"	#6	11"	34' - 0"	
12'	4'	144	9' - 9 3/4"	12"	4' - 11 1/2"	6' - 4 1/2"	8 1/2"	38' - 9"	#6	12"	39' - 11"	
	6'	216	9' - 9 3/4"	12"	4' - 11 1/2"	6' - 4 1/2"	8 1/2"	38' - 9"	#6	12"	39' - 11"	
	8'	288	9' - 9 3/4"	12"	4' - 11 1/2"	6' - 4 1/2"	8 1/2"	38' - 9"	#6	12"	39' - 11"	
	10'	360	9' - 11"	12"	5' - 0"	6' - 5"	8 1/2"	39' - 1"	#6	12"	40' - 3"	
	12'	342	10' - 0 1/4"	12"	5' - 0 1/2"	6' - 5 1/2"	8 1/2"	39' - 5"	#6	12"	40' - 7"	
14'	540	10' - 1 1/2"	12"	5' - 1"	6' - 6"	8 1/2"	39' - 9"	#6	12"	40' - 11"		

**NOTES:**

ALL CONSTRUCTION AND MATERIALS SHALL BE IN ACCORDANCE WITH THE CURRENT OKLAHOMA CITY STANDARD SPECIFICATIONS.

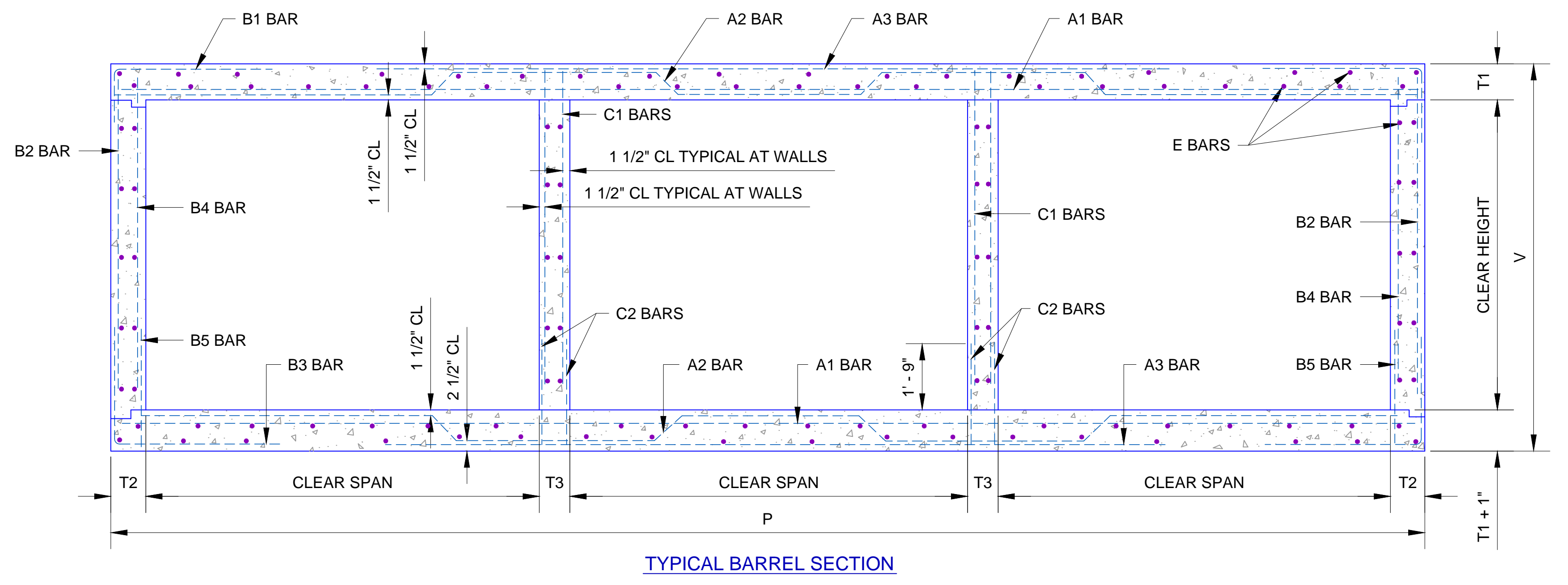
ALL BAR DIMENSIONS ARE OUT TO OUT.

REINFORCING STEEL IN BOTTOM SLAB (FOOTING) SHALL BE SUPPORTED ON BAR CHAIRS. CHAIRS SHALL BE SUPPORTED ON TIMBER PLANKS OR CLASS "C" CONCRETE STRIPS PLACED AT 4' CENTERS.

REINFORCING STEEL IN TOP SLAB SHALL BE SUPPORTED ON SLAB SPACERS.

REINFORCING STEEL IN WALLS SHALL BE HELD IN PLACE BY METAL CHAIRS. MAXIMUM SPACING OF THE CHAIRS SHALL BE 6'.

COST OF METAL CHAIRS, WOOD PLANK OR CONCRETE STRIPS SHALL BE INCLUDED IN OTHER ITEMS OF WORK.



CLEAR SPAN	CLEAR HEIGHT	AREA SQ. FT.	DIMENSIONS																												QUANTITIES PER LINEAR FT. OF BARREL		QUANTITIES FOR ONE PEDESTAL								
			T1					T2					T3					V					P					STEEL-LBS	CONC-C.Y.	STEEL-LBS	CONC-C.Y.										
			SIZE	SPAC.	LENGTH	SIZE	SPAC.	LENGTH	SIZE	SPAC.	LENGTH	SIZE	SPAC.	LENGTH	SIZE	SPAC.	LENGTH	SIZE	SPAC.	LENGTH	SIZE	SPAC.	LENGTH	SIZE	SPAC.	LENGTH	SIZE					SPAC.	LENGTH	SIZE	SPAC.	LENGTH	SIZE	SPAC.	LENGTH		
8'	4'	96	8 1/2"	9"	9"	5' - 6"	27' - 0"	#4	12"	26' - 8"	#6	12"	16' - 0"	#5	10"	4' - 7"	#5	10"	4' - 7"	#5	10"	6' - 0"	#4	12"	4' - 0"	#4	12"	2' - 6"	#4	12"	4' - 0"	#4	12"	2' - 6"	#4	18"	92	266.36	1.944	250	1.88
	6'	144	8 1/2"	9"	9"	7' - 6"	27' - 0"	#4	12"	26' - 8"	#6	12"	16' - 0"	#5	10"	4' - 7"	#5	10"	6' - 7"	#5	10"	6' - 0"	#4	12"	6' - 0"	#4	12"	2' - 6"	#4	12"	6' - 0"	#4	12"	2' - 6"	#4	18"	102	286.06	2.167	250	1.88
	8'	196	8 1/2"	9"	9"	9' - 6"	27' - 0"	#4	12"	26' - 8"	#6	12"	16' - 0"	#6	12"	4' - 7"	#6	12"	8' - 7"	#6	12"	6' - 0"	#4	12"	8' - 0"	#4	12"	2' - 6"	#4	12"	8' - 0"	#4	12"	2' - 6"	#4	18"	108	312.69	2.389	250	1.88
10'	4'	120	9 3/4"	9"	9"	5' - 8 1/2"	33' - 0"	#4	11"	32' - 8"	#6	11"	20' - 0"	#6	9"	5' - 2"	#6	9"	4' - 8"	#6	9"	7' - 0"	#4	12"	4' - 2"	#4	12"	3' - 0"	#4	12"	4' - 2"	#4	12"	3' - 0"	#4	18"	108	391.76	2.532	275	2.29
	6'	180	9 3/4"	9"	9"	7' - 8 1/2"	33' - 0"	#4	11"	32' - 8"	#6	11"	20' - 0"	#6	9"	5' - 2"	#6	9"	6' - 8"	#6	9"	7' - 0"	#4	12"	6' - 2"	#4	12"	3' - 0"	#4	12"	6' - 2"	#4	12"	3' - 0"	#4	18"	116	413.14	2.755	275	2.29
	8'	240	9 3/4"	9"	9"	9' - 8 1/2"	33' - 0"	#4	11"	32' - 8"	#6	11"	20' - 0"	#6	9"	5' - 2"	#6	9"	8' - 8"	#6	9"	7' - 0"	#4	12"	8' - 2"	#4	12"	3' - 0"	#4	12"	8' - 2"	#4	12"	3' - 0"	#4	18"	124	434.50	2.977	275	2.29
	10'	300	9 3/4"	10"	10"	11' - 8 1/2"	33' - 4"	#4	11"	33' - 0"	#6	11"	20' - 0"	#6	9"	5' - 2"	#6	9"	10' - 8"	#6	9"	7' - 0"	#4	12"	10' - 2"	#4	12"	3' - 0"	#4	12"	10' - 2"	#4	12"	3' - 0"	#4	18"	140	462.79	3.344	275	2.31
12'	4'	144	11 1/2"	9"	9"	6' - 0"	39' - 0"	#4	12"	38' - 8"	#7	12"	23' - 0"	#7	8"	5' - 10"	#7	8"	4' - 10"	#7	8"	8' - 0"	#4	12"	4' - 4"	#4	12"	4' - 4"	#4	12"	3' - 6"	#4	18"	120	491.60	3.333	325	2.71			
	6'	216	11 1/2"	9"	9"	8' - 0"	39' - 0"	#4	12"	38' - 8"	#7	12"	23' - 0"	#7	8"	5' - 10"	#7	8"	6' - 10"	#7	8"	8' - 0"	#4	12"	6' - 4"	#4	12"	3' - 6"	#4	12"	6' - 4"	#4	12"	3' - 6"	#4	18"	128	517.23	3.556	325	2.71
	8'	288	11 1/2"	9"	9"	10' - 0"	39' - 0"	#4	12"	38' - 8"	#7	12"	23' - 0"	#7	8"	5' - 10"	#7	8"	8' - 10"	#7	8"	8' - 0"	#4	12"	8' - 4"	#4	12"	3' - 6"	#4	12"	8' - 4"	#4	12"	3' - 6"	#4	18"	136	542.85	3.778	325	2.71
	10'	360	11 1/2"	10"	10"	12' - 0"	39' - 4"	#4	12"	39' - 0"	#7	12"	23' - 0"	#7	8"	5' - 10"	#7	8"	10' - 10"	#7	8"	8' - 0"	#4	12"	10' - 4"	#4	12"	3' - 6"	#4	12"	10' - 4"	#4	12"	3' - 6"	#4	18"	152	575.27	4.148	325	2.73
	12'	432	11 1/2"	11"	11"	14' - 0"	39' - 8"	#4	12"	39' - 4"	#7	12"	23' - 0"	#7	8"	5' - 10"	#7	8"	12' - 10"	#7	8"	8' - 0"	#4	12"	12' - 4"	#4	12"	3' - 6"	#4	12"	12' - 4"	#4	12"	3' - 6"	#4	18"	160	602.34	4.568	325	2.75
	14'	540	11 1/2"	12"	12"	16' - 0"	40' - 0"	#4	10"	39' - 8"	#6	10"	23' - 0"	#7	8"	5' - 10"	#7	8"	14' - 10"	#7	8"	8' - 0"	#4	12"	14' - 4"	#4	12"	3' - 6"	#4	12"	14' - 4"	#4	12"	3' - 6"	#4	18"	168	653.47	5.037	325	2.78