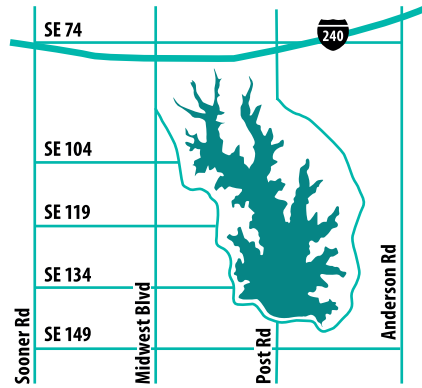
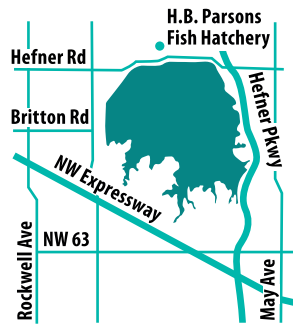


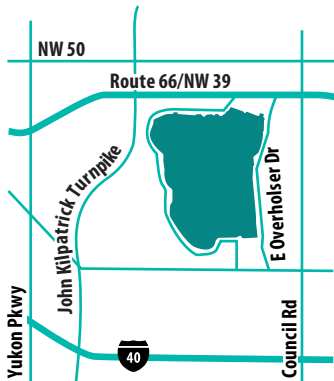
Lake Stanley Draper



Lake Hefner

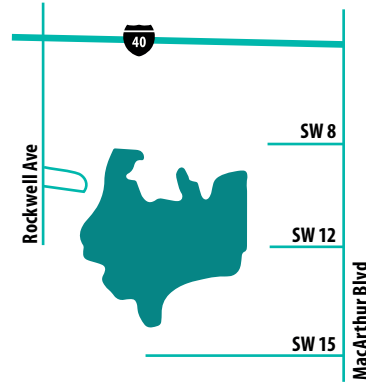


Lake Overholser

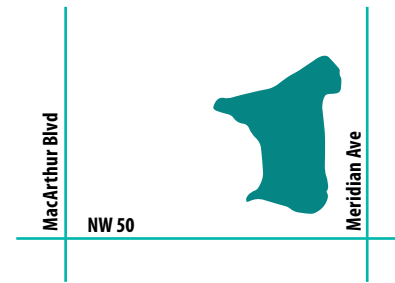


SELECTED "CLOSE TO HOME" FISHING WATERS

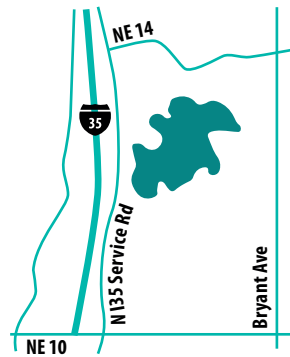
Crystal Lake



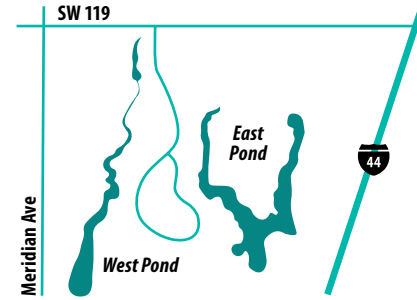
Dolese Youth Park Pond



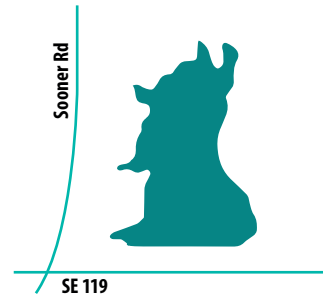
Edwards Park Pond



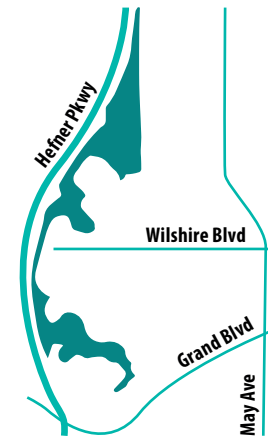
South Lakes Park Ponds



Kitchen Lake



Kids Lake



OKC FISHING REGULATIONS



FISHING WATERS

City Lakes

Lake Hefner (NW OKC) • **Lake Stanley Draper** (southeast of Tinker AFB in OKC) **Lake Overholser** (west of Bethany, OK (includes tallwaters to NW 10th St. bridge))

“Close to Home” Fishing Waters

“Close to Home” waters are part of a cooperative fisheries management program between the City and OK Department of Wildlife Conservation. Please follow catch and release regulations for largemouth bass.

Crystal Lake

6625 SW 15th St.

Dolese Youth Park Pond

5105 NW 50th St.

Edwards Park Pond

1515 N Bryant Ave. (OKC)

Kids’ Lake

3200 W Wilshire Blvd.

Kitchen Lake

5501 SE 119th St.

Route 66 Park Ponds

9901 NW 23rd St.

South Lakes Park Ponds

4302 SW 119th St.

Zoo Lake

2101 NE 50th St.

Oklahoma River

Fishing access along the Oklahoma River extends downstream from NW 10th to the NE 10th St. bridge, and includes the Eastern, May Ave. and Western Ave. river basins and wetland ponds.

Fishing is not allowed on Oklahoma River dams or within 100 feet upstream or downstream of the dams.

Boat Ramp Locations (along the south side of the river)

- Lincoln Ave. Bridge (on Durland Ave.)
- Exchange Ave. Bridge (west of Exchange)
- SW 15th St. & Portland (east of Portland on 15th St.)

Accessibility

For a list of ADA accessible fishing docks and piers, visit okc.gov/parks or call (405) 297-1426.

PERMITS

Fishing Permits

A City fishing permit is required for anglers ages 16 to 62 to fish on City lakes, the Oklahoma River, Stinchcomb Wildlife Refuge and “Close to Home” fishing waters. Permits are **not required** for people who are legally blind or have a 60 percent or more disability. An Oklahoma state fishing license is also required.

Boating Permits

A City boating permit is required for **all** watercraft (including miniboats, canoes and kayaks) on City lakes, Crystal Lake, South Lakes East Pond, Kitchen Lake and certain “Close to Home” fishing waters.

State registration is required for all watercraft except canoes and kayaks.

Permit Pricing

Permit Type	Annual	Daily
	\$20	\$5
Fishing	3 Day Fishing Permit <i>(valid 3 consecutive days from date of purchase)</i>	
	\$10	
Boating	\$33	\$6.25
Hunting	\$12.50	\$3

Annual Permits are valid one year after the date of issue. Daily permits are valid 24 hours from the time of purchase.

Revenue generated by fishing permits supports the City’s fisheries program and their work on Oklahoma City fishing waters.

Call (405) 297-3882 if you are having online purchasing issues.

Permit Vendors

Visit okc.gov/parks or call (405) 297-1426 for a list of approved businesses selling boating, fishing and hunting permits.

Free Fishing Days

Free fishing days are held the **first Saturday** of each month. Applies to City Lakes, Oklahoma River, Stinchcomb Wildlife Refuge and OKC “Close to Home” fishing waters. City fishing permits and State license are not required except on the first weekend in June.

Visit okc.gov/parks for more information on fishing education.

RESTRICTIONS ALL WATERS

Not Allowed

- spears and gigs
- seines, cast nets or other nets
- snagging (pulling/jerking hook(s) through water to impale a fish)
- grab hooks
- trot, jug, yo-yo’s or limb lines
- noodling (hands-only fishing) except in the Oklahoma River, downstream from the NW 10th St. bridge to the MacArthur St. bridge.

Rods & Reels

Up to three rods and reels per person, with no more than three hooks per line. Does not apply to artificial lures with more than three hooks.

Bow Fishing - City Lakes Only

Allowed during daylight hours at Draper, Hefner and Overholser lakes. No crossbows. Arrows with only one point and four barbs on each point.

Fisherman Floats (Tubes)

Allowed during daylight hours, within 100 feet of any shoreline, on City lakes, coves and tributaries of the Oklahoma River, Kids Lake, Kitchen Lake, Crystal Lake and South Lakes East Pond. Life jackets and watertight waders required.

Daily Possession & Length Limits

Fish Types	City Lakes	Close to Home Fishing Waters
Largemouth & Smallmouth bass	6 combined (14” minimum*), only 1 smallmouth bass	Catch and release
Spotted bass	none	none
Channel & Blue Catfish	15 combined; only 1 blue catfish over 30”	NA
Crappie	37	37
Flathead Catfish	5	5
Walleye	6 (14” minimum*)	NA
Striped Hybrid Bass	20, only 5 over 20”	NA
Sunfish & Hybrids, Trout, & Channel Catfish	NA	3 Aggregate

** Fish caught smaller than listed minimum size must be returned to the water immediately. Length is measured from tip of snout to end of tail, with fish laid flat on a ruler, mouth closed and tail pressed together.*

TROUT SEASON

December 1 - February 28

Route 66 Park, 9901 NW 23rd Edwards Park, 1515 NE Bryant

Catchable rainbow trout are stocked every two weeks.

Regulations

- State fishing license and City permit required
- Fishing from bank only, boat fishing prohibited
- Rod and reel fishing only, one rod and reel per person
- 3 trout per person per day
- No culling. Fish on a stringer or in a bucket cannot be released back into the water
- Fish must be on individual strings with anglers name and state fishing license number attached

SAFETY

The OKC Police Department and Oklahoma Department of Wildlife Conservation game wardens enforce fishing regulations on all City Lakes, “Close to Home” and other fishing waters.

911 emergencies / violations
(405) 521-3719
OK Dept. of Wildlife Conservation Law Enforcement
(800) 522-8039
Operation Game Thief

ZEBRA MUSSELS

Zebra mussels are an invasive species that mass together on any structure in the water. They endanger local fish populations, threaten our water treatment plants and damage everything they touch: boats, trailers, docks, piers, water intakes and fisherman floats. Stop spreading them by taking simple steps for your boat, trailer, vehicle, waders and other fishing equipment:



Inspect



Clean



Drain



Dry

For more information, visit wildlifedepartment.com or okc.gov/zebra. To report zebra mussels call (405) 521-3721.