



STRONG NEIGHBORHOODS INITIATIVE

better communities together

okc.gov/sni

twitter.com/OKC_SNI

facebook.com/SNIOKC

[IG: okc_sni](https://IG:okc_sni)



placemaking



stabilization



commitment



collaboration



Shannon Entz, CNU-A, Program Planner
Jennifer Sylvester, AICP, Associate Planner
City of OKC Planning Department
Neighborhood + Commercial District Revitalization

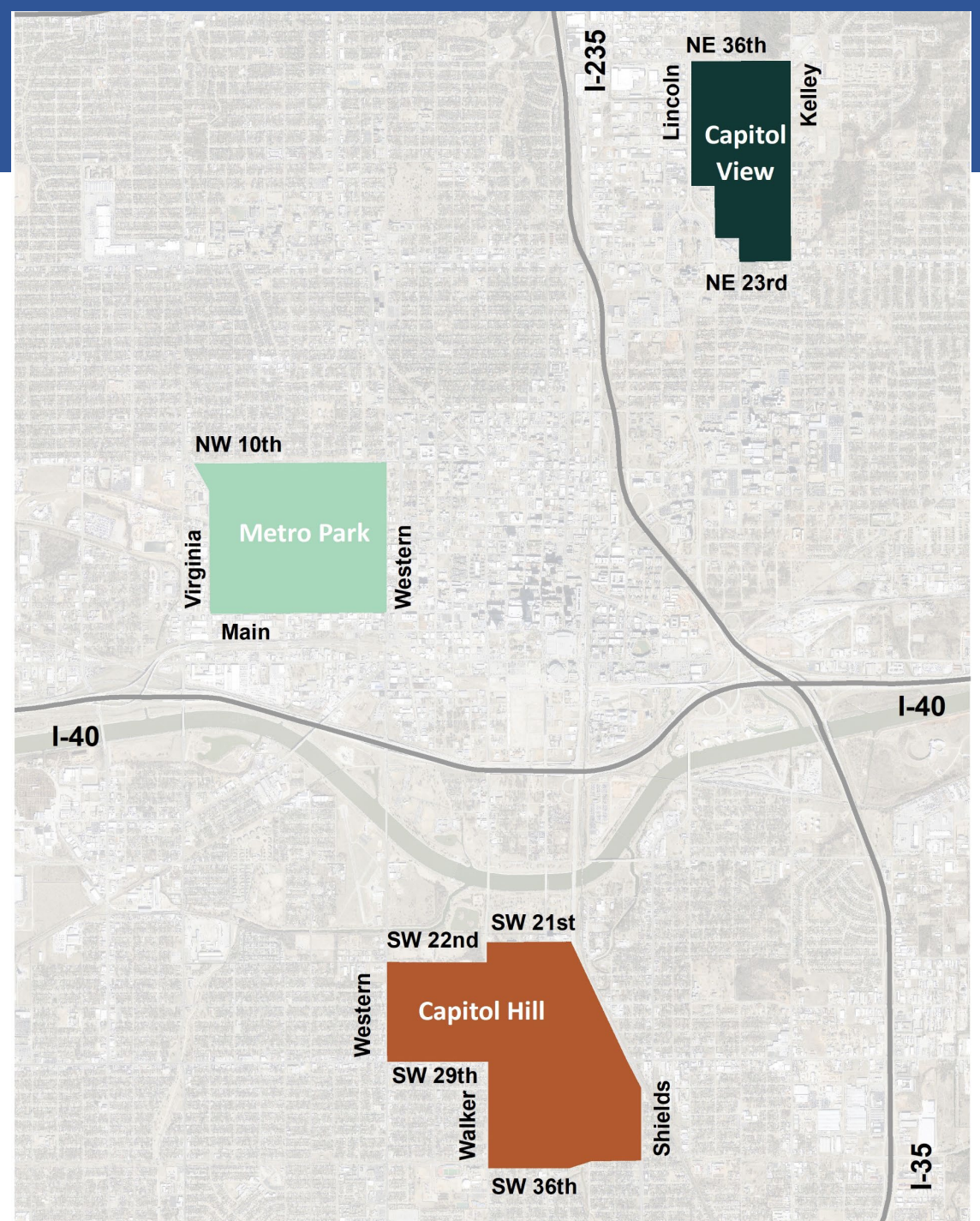
OKC's SNI Intended Outcomes

Tip declining neighborhoods towards long-term, economic sustainability through community engagement, holistic planning strategies and thoughtful public and private investments.

- Improved quality of life & culture - **From place to "A PLACE"**
- Engaged and informed neighborhood groups, children and parents
- Decreased turnover in neighborhoods and schools
- Increased homeownership and private investment
- Existing owners staying and aging in place
- Improved property values & market stabilization
- Decreased perception of crime & discrimination
- Greater connectivity and accessibility to jobs, education and services
- Reduction of vacant properties
- Improved health outcomes for all
- Improved greenspaces and trees



2018-2023 SNI Neighborhoods



Previous SNI Neighborhoods

To view Annual SNI Progress Reports, go to www.okc.gov/sni



SNI'S Planning & Implementation Process

Community Engagement

Revitalization Strategy

Implementation

Results



STRONG NEIGHBORHOODS INITIATIVE CITY OF OKLAHOMA CITY
2018-2023 STRONG NEIGHBORHOODS REVITALIZATION STRATEGY
CAPITOL VIEW NEIGHBORHOOD REVITALIZATION STRATEGY

HOUSING IN CAPITOL VIEW
 GOAL: ELIMINATE BARRIERS AND IMPROVE ACCESS TO AFFORDABLE, SAFE, ENERGY EFFICIENT AND FAIR HOUSING FOR BOTH OWNERS AND RENTERS IN THE NEIGHBORHOOD.

NEIGHBORHOOD HOUSING NEEDS
 Your neighborhood's housing goals and strategies are based on the following list of needs shared on February 15, 2018:

1. Owner-occupied rehab housing rehabilitation, including emergencies, handicap accessibility, weatherization and exterior maintenance
2. Improve public housing property maintenance
3. Safe rental properties
4. Increase the number of affordable and market-rate, single-family homes, senior housing and special needs (domestic violence shelter)
5. Reduce number of boarded-up, vacant homes
6. Driveway approaches
7. Down-payment assistance
8. Legal assistance for titles and deeds
9. Paint house numbers on curbs for safety
10. Storm shelters

IMPLEMENTATION STRATEGIES

1. Rehabilitate homes to safe, energy efficient and accessible standards.
2. Work with non-profit partners and HUD to rehab, build and develop mixed-income, single-family, multi-family housing and special needs (domestic violence).
3. Maintain neighborhood culture and character by retaining current stock of homes.
4. Work with non-profits to offer down-payment assistance to increase homeownership.
5. Discuss and resolve exterior property maintenance issues with OKC Housing Authority and OKC Public Schools.
6. Provide legal assistance to clean up title and deeds.
7. Provide Fair Housing and landlord-tenant education.
8. Remove and replace hazards such as vacant buildings, old structures, fences and dead trees.
9. Work with volunteers or non-profit to paint house numbers on curbs



2018-2020 PROGRESS IN CAPITOL VIEW

Capitol View Neighborhood

- 872 Residential Units (Source: Oklahoma County Boardman)
- 40% Owner-Occupied, 60% Non Owner-Occupied (Source: Oklahoma County Tax Assessor)
- \$49,271 Average Residential "Actual" Value (Source: Oklahoma County Tax Assessor)
- \$18,830 Median Household Income (Source: US Census)
- 13,956 Employees within 1 mile radius (Source: Oklahoma County)

City of Oklahoma City
 City Dollars: \$87,344.54
 Non-City Dollars: \$2,395,725.00

Average Home Sales Price
 July 2018 - June 2020
 Source: Oklahoma County Tax Assessor & City of OKC Accounting

Avg Price Per Sq Ft
 July 2018 - June 2020
 Source: Oklahoma County Tax Assessor
 Median for OKC: \$116
 Source: Zillow.com August 2020

Crime Incidents
 Source: Oklahoma County Boardman
 Average for OKC: 52 Per Sq Mile
 Source: Neighborhoodscout.com August 2020

SNI Neighborhood Projects

- 23 Housing Rehabs
- 1 Saving Our Youth Program
- 2 Mobile Pet Clinics
- 18 Monthly Mobile Markets
- 1 Community Space Renovation
- 23 Sign Toppers
- 15 Trees Planted
- 126 Hazardous Tree Removals
- MLK ES After School Program
- Moon MS After School Program
- Capitol View SNI Boundary

SNI'S "Holistic" Approach In Action

Physical, social and economic investments

New **street trees**
lower utility bills,
enhance **walkability**
& beauty

Arborist sharing the
benefits of trees and
proper tree care and
planting techniques

Local partners and
adult neighbors
mentoring the youth
volunteers



New, **affordable**,
accessible and
energy-efficient **home**
for wheelchair-bound
homeowner

Former **vacant lot**
now occupied and
contributing more
property tax

New **sidewalks**
increase mobility &
access to schools,
jobs and **parks**

COMMUNITY ENGAGEMENT AND PRIDE

Current SNI Tools for Revitalization

- New Construction Infill Housing
- Owner-Occupied Housing Rehabilitation
- Homeownership Assistance & Education
- Sidewalks and ADA Access
- Tree Planting & Hazardous Tree Removal
- Legal Assistance
- Fair Housing
- Property cleanup
- STEAM Afterschool & Summer Programs for Schools serving SNI areas
- Neighborhood Grants, Outreach, Events & Volunteer Opportunities
- Public art & cultural enrichment
- Park Enhancements
- Bus shelters
- Public Education Workshops

Approx \$1.4M/yr in HUD CDBG & HOME funds

Safe, Affordable and Fair Housing

Home Repairs, Down Payment Assistance & New Construction

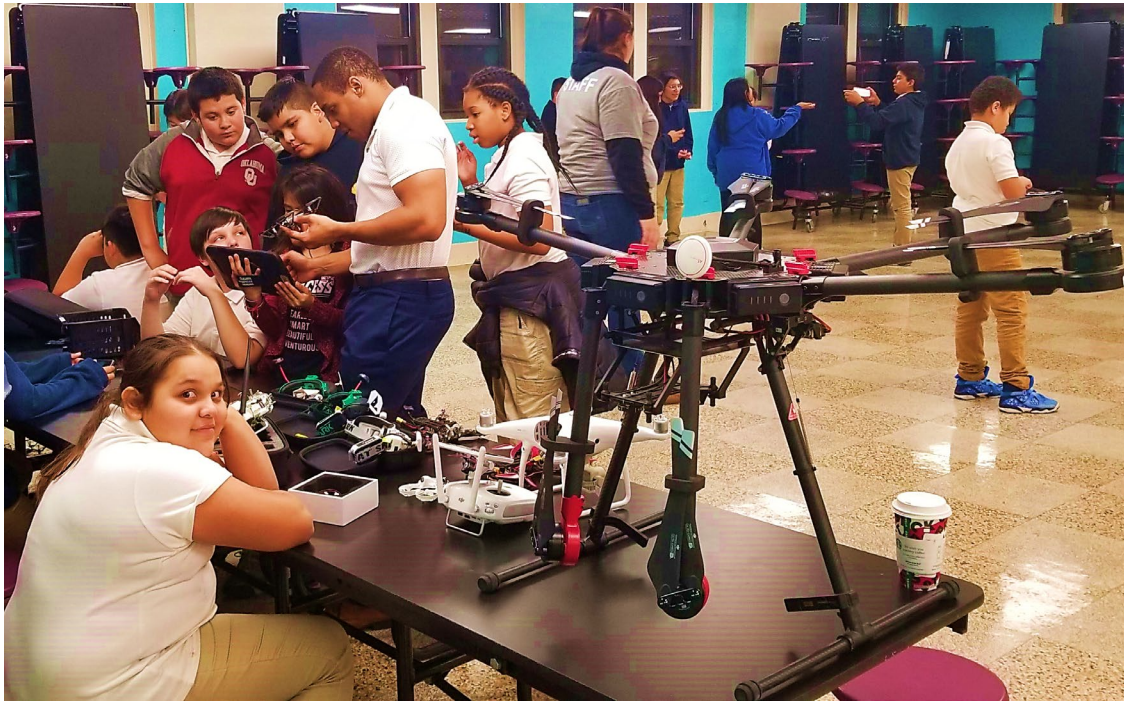
Owner-occupied housing rehabilitation



Affordable infill homes built by CHDO partners



Youth, Afterschool & Community Wellness Programs



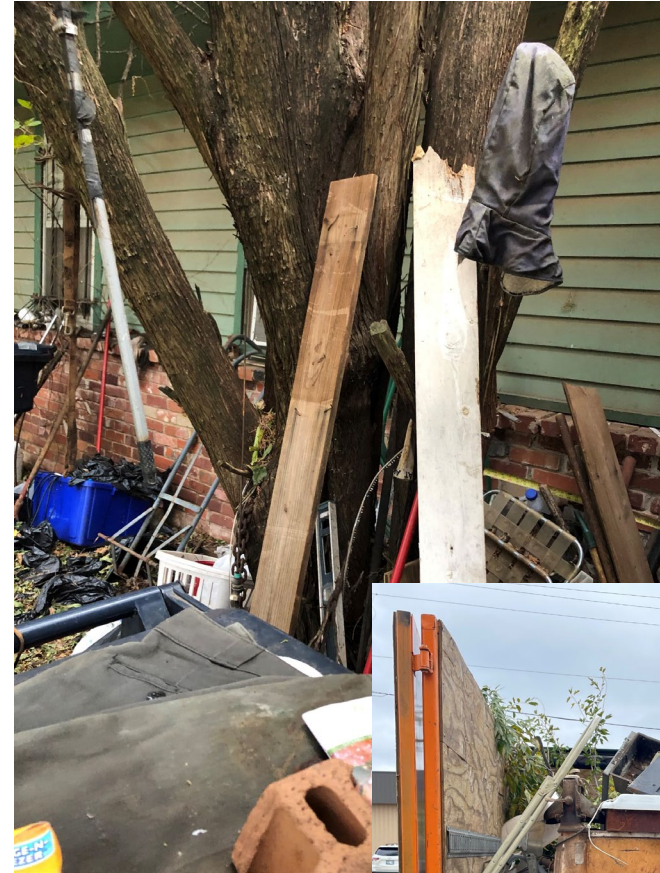
Accessibility and Safety



New sidewalks & ADA ramps



Hazardous tree trimming & removal



NEW Safe & Tidy Program



SNI Neighborhood Projects



Neighborhood Parks and Green Spaces



Public Art



Coming Spring 2022!



Mural at Hilltop Clinic in Capitol Hill by Lucinda Jones



Butterfly Metal Art at Capitol View Community Space and McNabb Park by ArtFusion Studios



Pet Vaccination Clinic

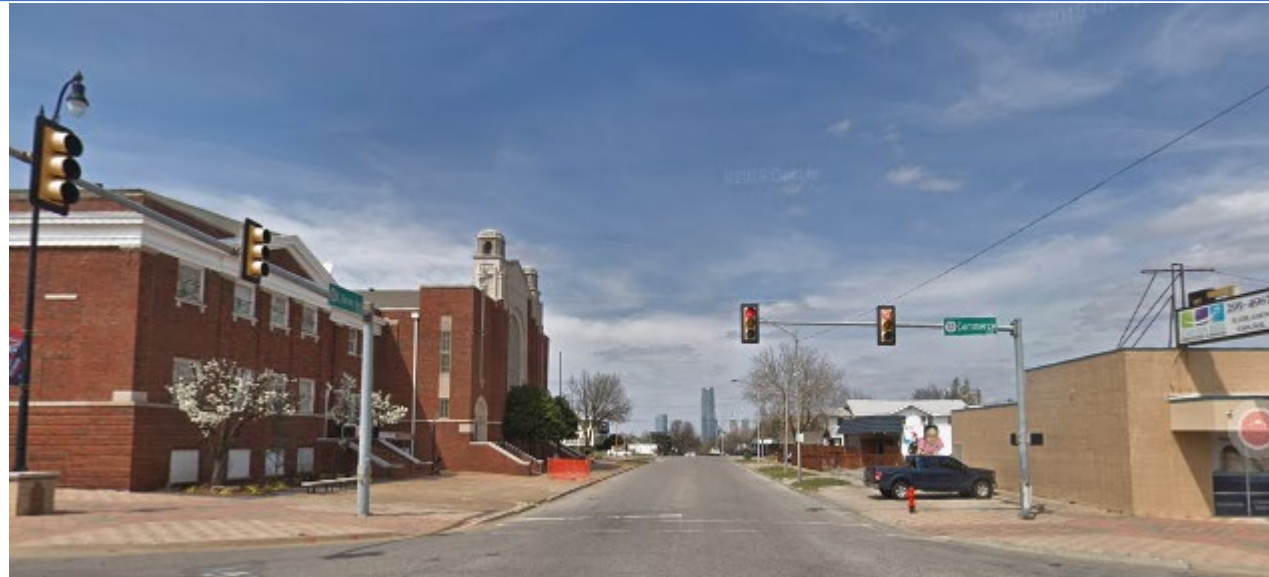


Art in the medians along Linwood Blvd in Metro Park by ArtFusion Studio



Redbud Tree Planting in Capitol View

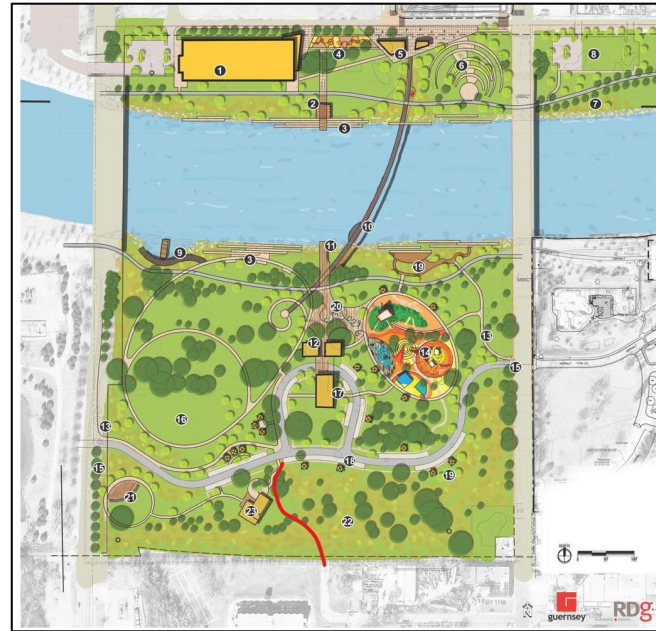
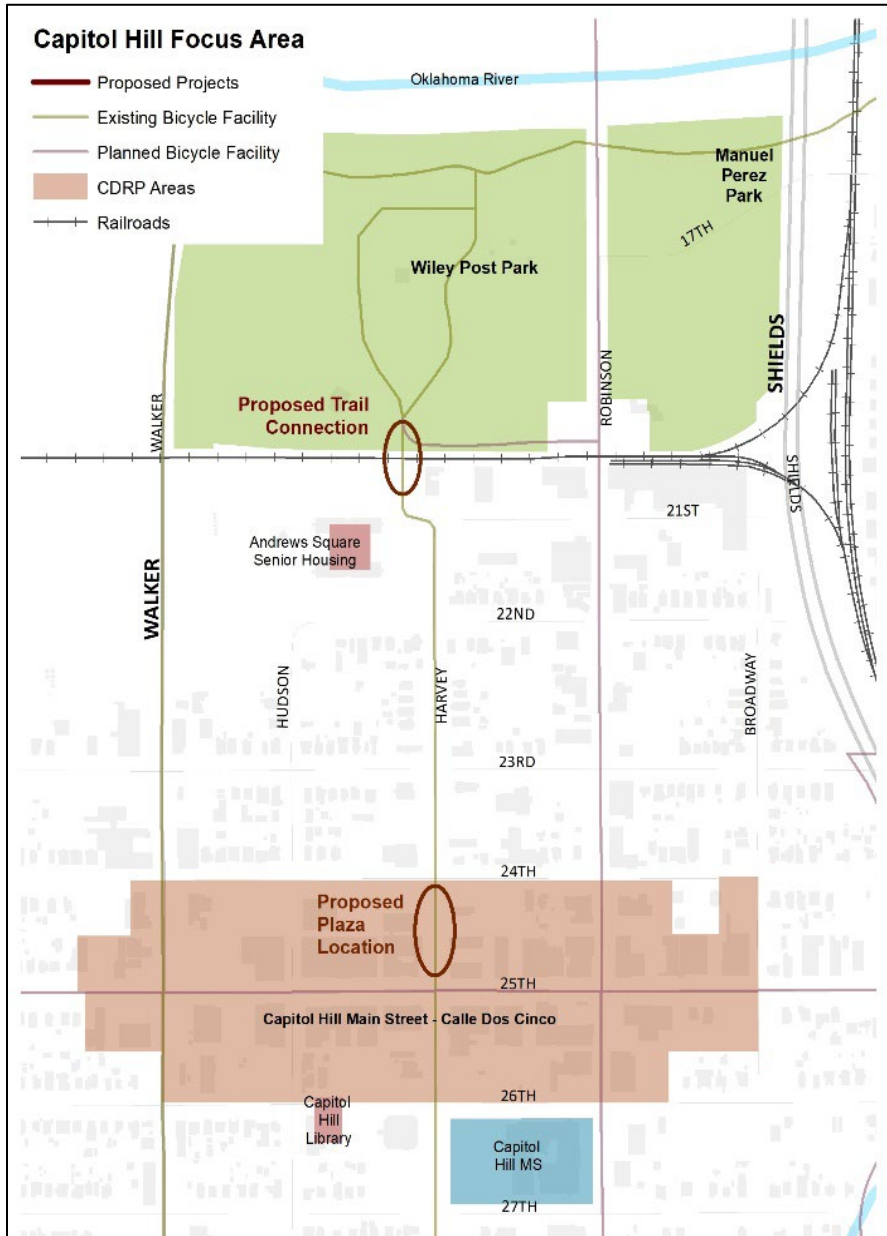
Design underway



Capitol Hill Plaza Project SW 25th and Harvey



Design underway



Capitol Hill Trail Connection at Wiley Post Park and BNSF RR



Recent Community Outreach & Education



BLUE HOMEOWNERSHIP WORKSHOP

CELEBRATE HOMEOWNERSHIP MONTH AND MEET OUR PARTNERS WHO CAN MAKE YOUR HOUSING DREAMS A REALITY!

DATE: Tuesday, June 2nd
TIME: 6:00pm-7:30pm
Virtual Workshop - Please register for login information.

- Purchase Contracts
- Mortgages
- Predatory Lending
- Homeowners Insurance
- Down-payment Assistance Opportunities
- New, Affordable Homes available in NE OKC



MEET OUR SNI PARTNER AGENCIES AND LEARN ALL ABOUT THE MANY PROGRAMS OFFERED TO SNI NEIGHBORS!



- LEGAL ASSISTANCE
- NEIGHBORHOOD ORGANIZING
- AFTER-SCHOOL PROGRAMS
- OKC MOBILE MARKET
- HOMEBUYER EDUCATION
- HAZARDOUS TREE REMOVAL
- TREE PLANTINGS
- HOUSING DISCRIMINATION PREVENTION
- HOME REPAIR PROGRAMS
- DOWNPAYMENT ASSISTANCE
- NEW CONSTRUCTION HOMES



SNI HOUSING & LEGAL WORKSHOP FOR RENTERS

MEET OUR RENTAL HOUSING EXPERTS AND GET THE BEST ADVICE AND TIPS!

DATE: Thursday, Oct 15
TIME: 6:00pm-7:00pm
Register at: www.okc.gov/sni

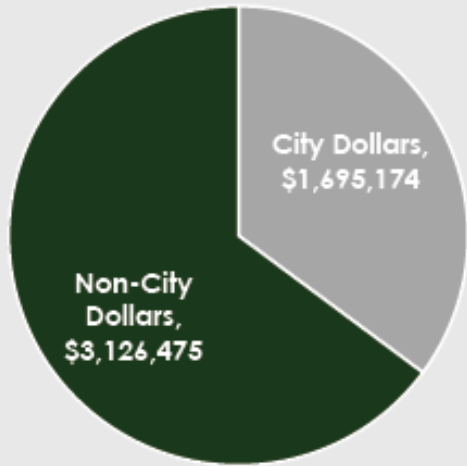
Broadcast on FB Live & Call-In Option w/Spanish Language Assistance Available

- NEW Eviction Prevention Program
- Landlord-tenant rights and responsibilities
- Renters Insurance
- Housing Discrimination



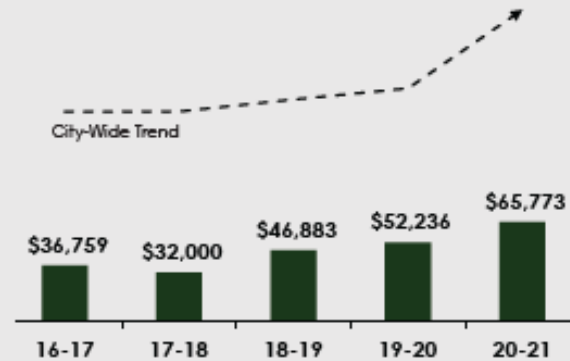
Annual SNI Progress Reports www.okc.gov/sni

2018-2021 Progress in Capitol View



Investment Dollars July 2018 - June 2021

Source: City of OKC Permits & City of OKC Accounting

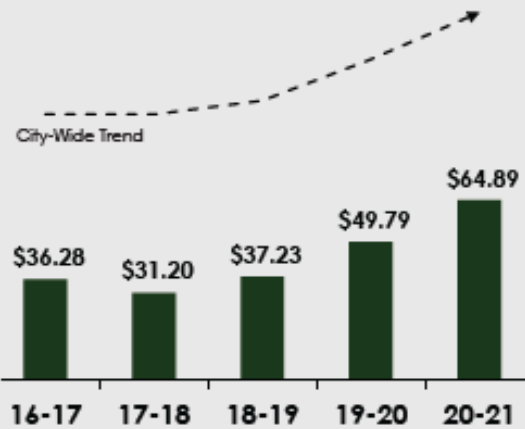
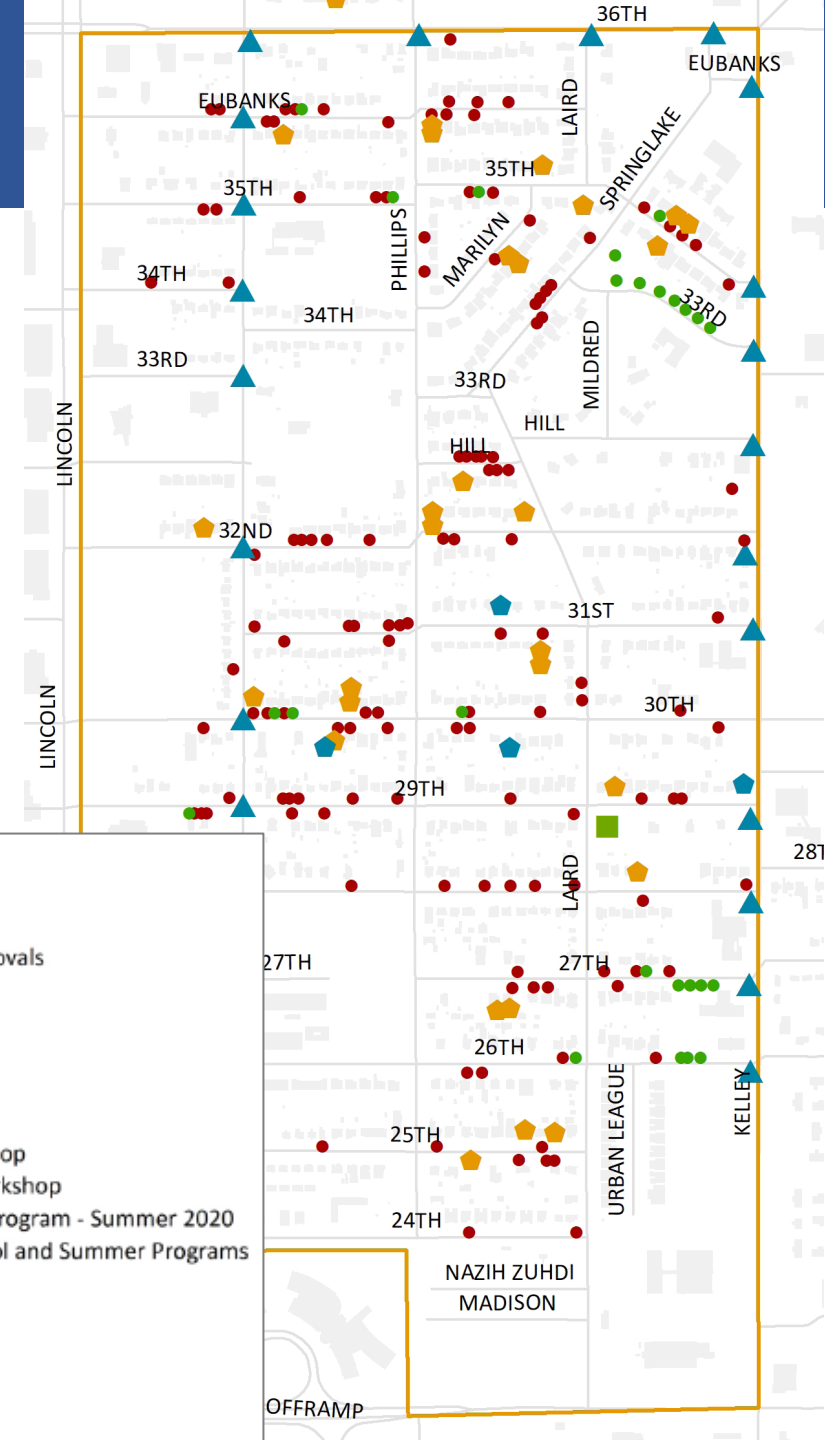


Average Home Sales Price

Source: Oklahoma County Tax Assessor

Median Sales Price for OKC: \$208,000

Source: Realtor.com June 2021

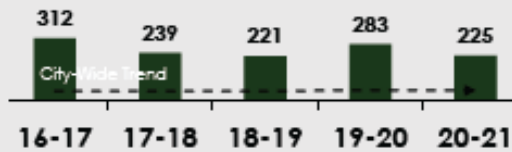


Avg Sales Price Per Sq Ft

Source: Oklahoma County Tax Assessor

Median List Price Per Sq Ft for OKC: \$133

Source: Realtor.com June 2021



Crime Incidents

Source: OKC Police Department

Average for OKC: 51 Per Sq Mile

Source: Neighborhoodscout.com June 2021

SNI Neighborhood Projects

- 4 New Construction Affordable Homes
- 29 Housing Rehabs
- 140 NeighborWoods Hazardous Tree Removals
- 25 NeighborWoods Trees Planted
- 23 Sign Toppers
- Community Space Improvement
- Mobile Pet Spay and Neuter Clinic
- Mobile Pet Vaccination Clinic
- Personal and Neighborhood Safety Workshop
- Legacy of Love: Family Estate Planning Workshop
- 200 Students Served at Saving Our Youth Program - Summer 2020
- 55 Students Served Monthly at After School and Summer Programs

SNI Partner Projects

- 18 Rebuilding Together Projects
- 7 Catholic Heart Work Camp Projects
- Monthly OKC Mobile Market

SNI PARTNERS



Annual SNI Progress Reports are posted at www.okc.gov/sni.

We welcome your questions and feedback!

Shannon.Entz@okc.gov

Jennifer.Sylvester@okc.gov

405-297-2911

okc.gov/sni

twitter.com/OKC_SNI

facebook.com/SNIOKC

[ig: okc_sni](https://ig.okc.sni)





OKC's Commercial District Revitalization Program

CONGRESS FOR NEW URBANISM
MARCH 23, 2022

Donna Cervantes, Associate Planner

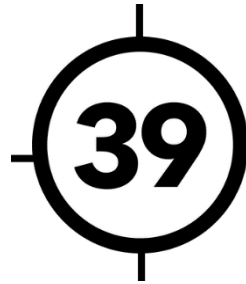
Donna.Cervantes@okc.gov

okc.gov/cdrp

Overview

- City of OKC has invested approx. \$175K annually in the Commercial District Revitalization Program since 2009
- Currently 13 Districts across the city
- Strategies to leverage the funds to create economically resilient places

The Districts

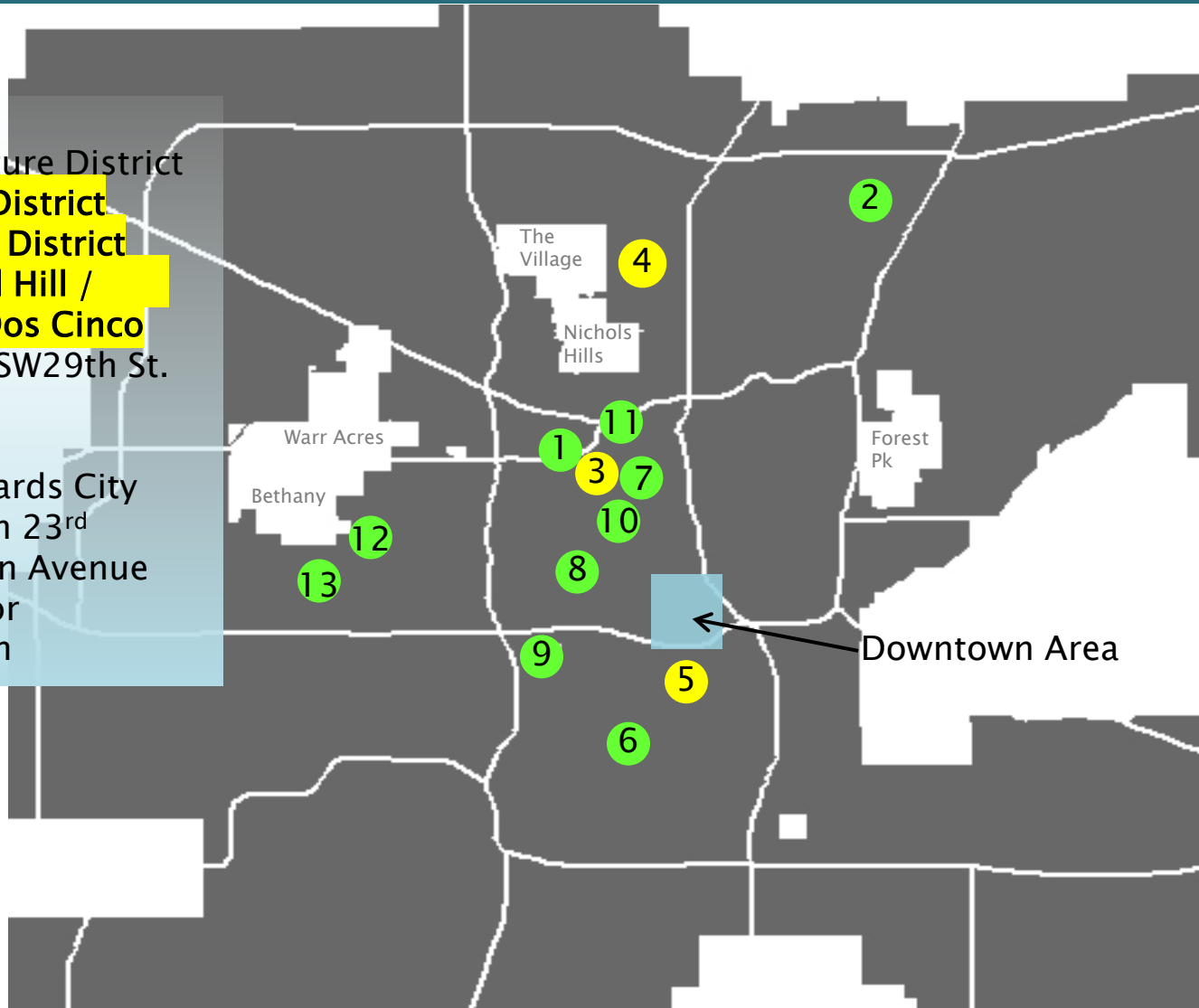


**WESTERN
avenue**



OKC's CDRP Districts

1. 39th St.
2. Adventure District
3. Asian District
4. Britton District
5. Capitol Hill / Calle Dos Cinco
6. La 29/SW29th St.
7. Paseo
8. Plaza
9. Stockyards City
10. Uptown 23rd
11. Western Avenue
12. Windsor
13. WestTen



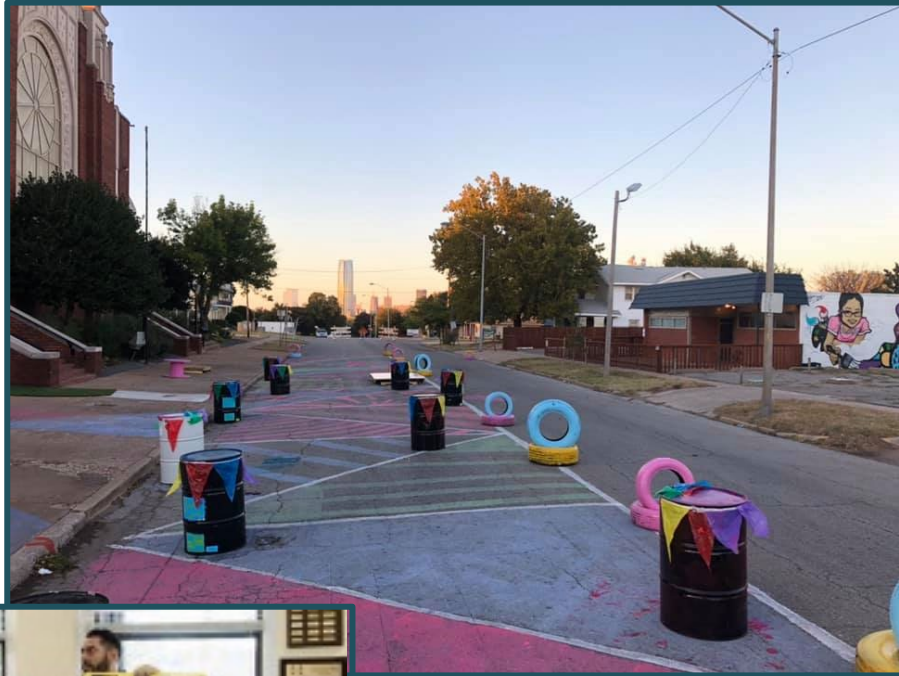
Strategic Plan Elements

A Comprehensive Approach in 5 Elements:

1. Organization, Planning, Operations and Finance
2. Market Fundamentals, District Culture, and Promotion
3. Economic & Community Development
4. Redevelopment, Design and Infrastructure
5. Access and Safety, Parking, Traffic and Mobility



Coordinate Grassroots efforts



Leverage Public / Private Investment



Arts and Culture – a Tool for Placemaking

Artist Studios & Festivals promote jobs and tourism



Creating Places for Festivals & Gatherings

Cultural events attract visitors and bring the streets to life around town



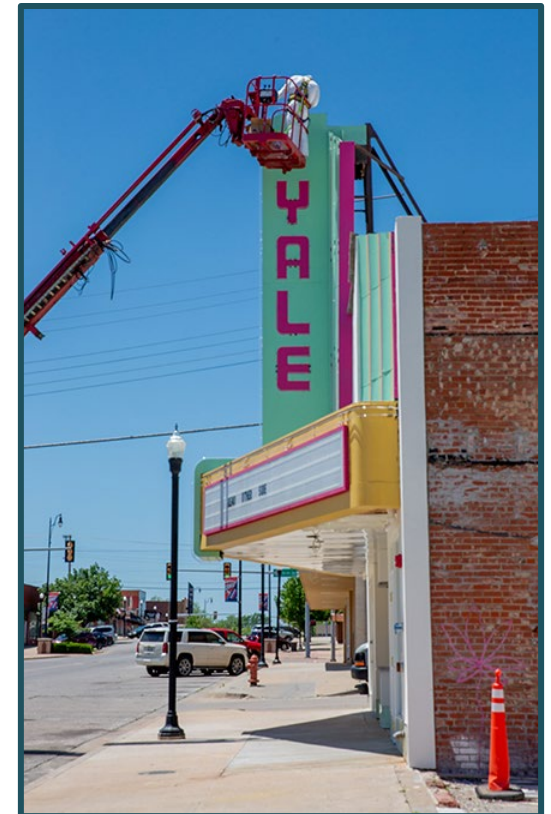
Promoting Cultural Themes

- History
- Tradition
- Community
- Pride

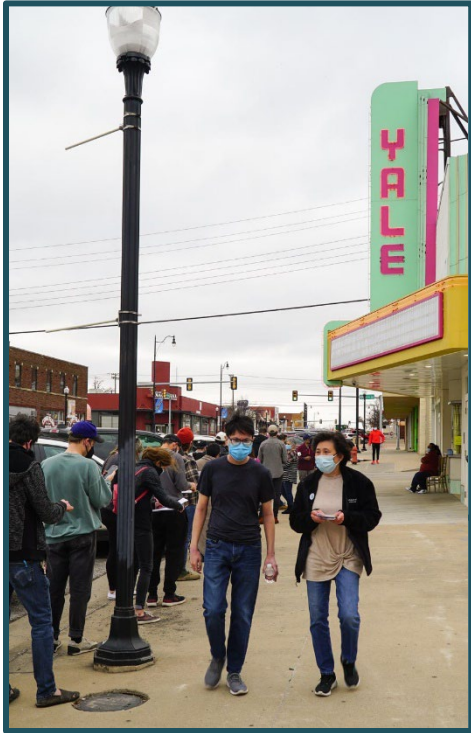


Attracting New Investment

Construction, revitalization, and beautification projects across the city



... Creating Stronger Neighborhoods



Residential neighborhoods served by a successful independent business district gained, on average, 50% more in home values than their citywide markets since 1995.

American Express OPEN Index of Independent Retail Vitality—A Study of Market Trends in Major American Cities 2011



Leadership Strategies

- Organize those with interest and investment in the “place”
- Build an authentic connection to the local community and neighborhoods
- Create Strategic Plans on the pillars of organizational fitness, placemaking, and market alignment

Thank You

Donna Cervantes donna.cervantes@okc.gov 405-297-2905

Kim Cooper-Hart Kim.cooper@okc.gov 405 297-2900