

**LEGEND**

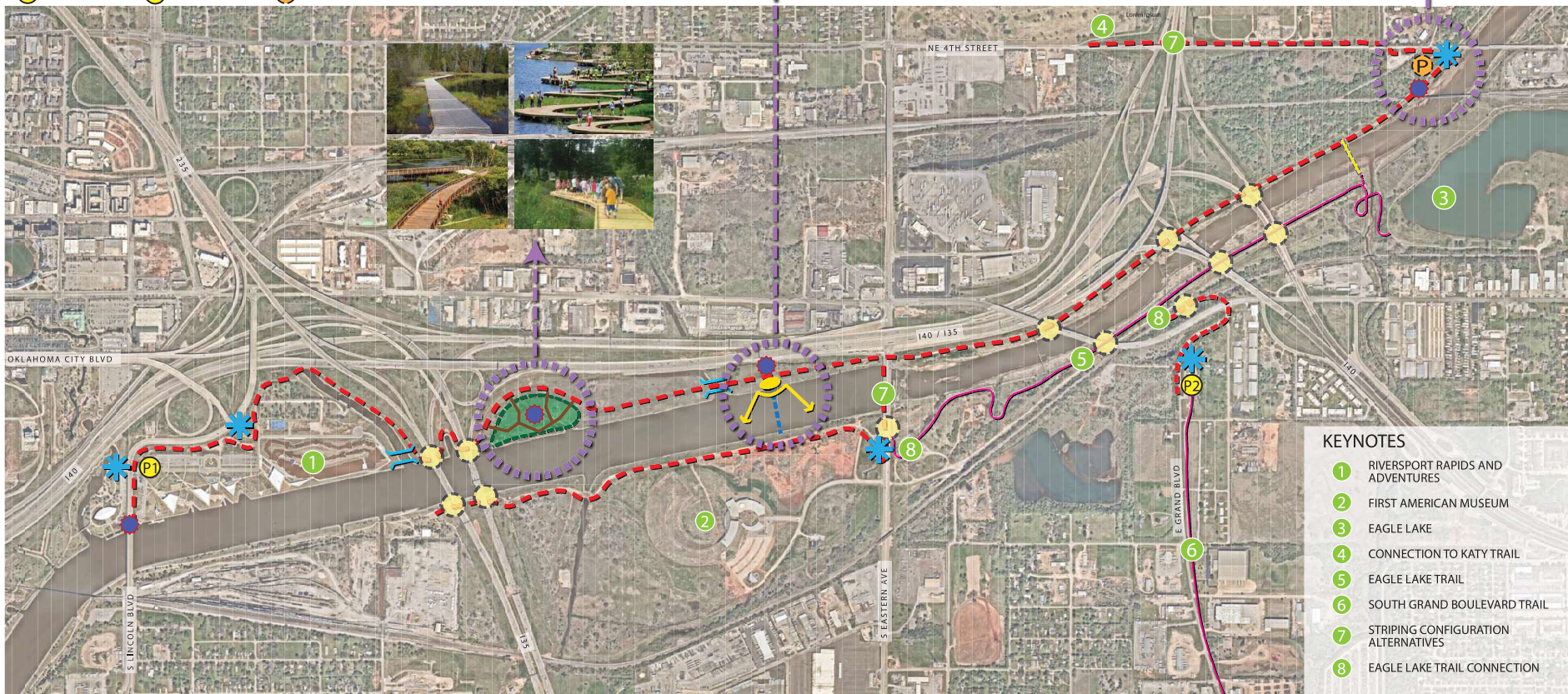
- TRAILHEAD/GATEWAY SIGNAGE
- OVERLOOK OPPORTUNITIES
- EXISTING PARKING
- PROPOSED PARKING
- PEDESTRIAN BRIDGE
- 2000M STARTING LINE
- PROPOSED TRAIL ALIGNMENT
- EXISTING TRAIL
- LIGHTING UNDERSIDE OF BRIDGE/PUBLIC ART
- FUTURE DAM & LOW WATER CROSSING
- LITTORAL PLANTINGS & BOARDWALK
- POTENTIAL PUBLIC ART OPPORTUNITIES
- BOARDWALKS

**P1** 363 SPACES    **P2** 21 SPACES    **P** 25 SPACES

- STARTING LINE PLAZA LEGEND:**
- A** TRAIL
  - B** STARTING LINE PLAZA
  - C** TIERED SEATING
  - D** VIEWING TOWER
  - E** START LINE



- TRAILHEAD LEGEND:**
- A** PRIVATE RAILWAY
  - B** ENTRY GATEWAY SIGN
  - C** PARKING LOT (25 SPACES)
  - D** EVENT LAWN
  - E** PAVILION/TRELLIS
  - F** OVERLOOK PLAZA
  - G** STONE STEPS/PAVING TO THE MAIN TRAIL
  - H** EXISTING RIVER BANK
  - I** ADA RAMP
  - J** FUTURE PARKING EXPANSION
  - K** SEATING AREA ALONG THE SIDEWALK



- KEYNOTES**
- 1** RIVERSPORT RAPIDS AND ADVENTURES
  - 2** FIRST AMERICAN MUSEUM
  - 3** EAGLE LAKE
  - 4** CONNECTION TO KATY TRAIL
  - 5** EAGLE LAKE TRAIL
  - 6** SOUTH GRAND BOULEVARD TRAIL
  - 7** STRIPING CONFIGURATION ALTERNATIVES
  - 8** EAGLE LAKE TRAIL CONNECTION