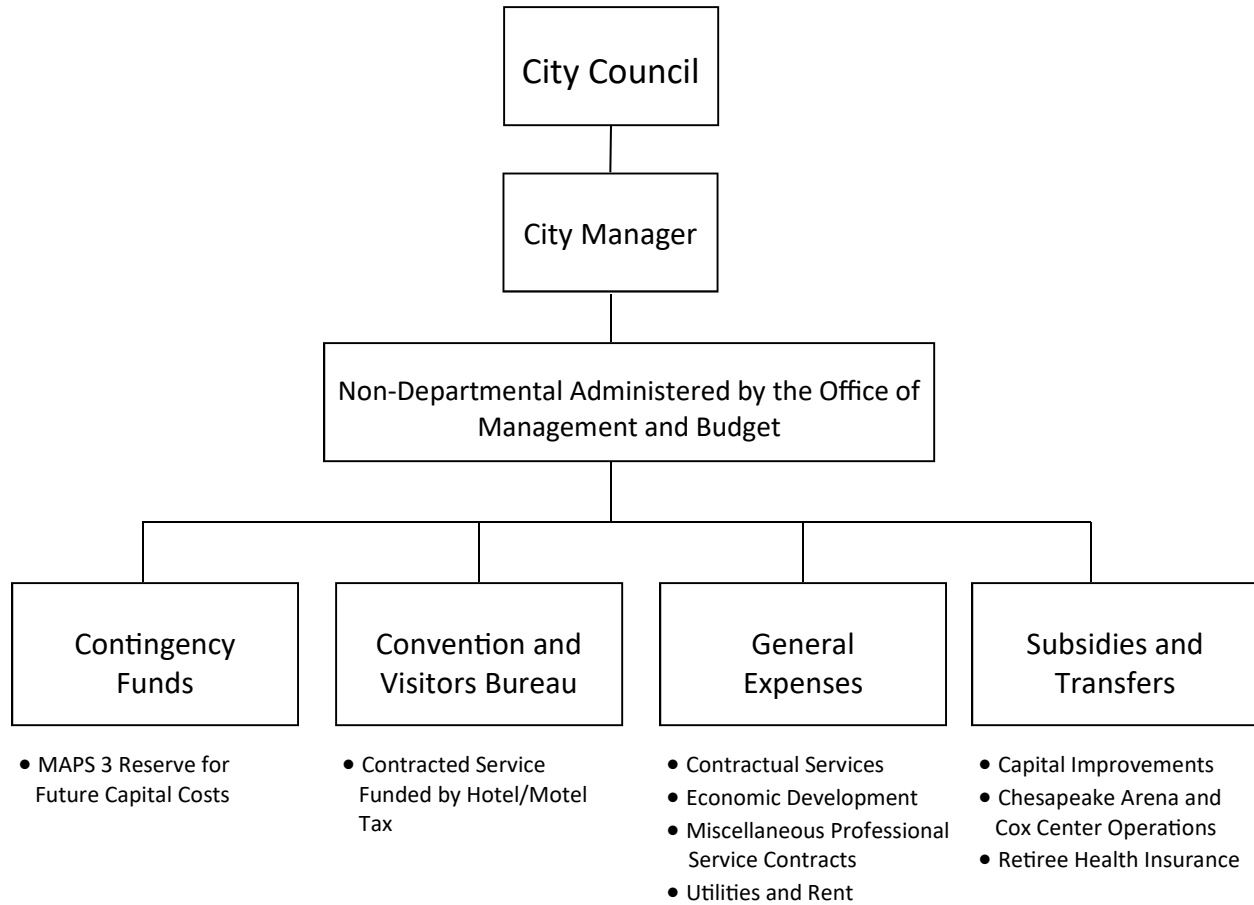


# Non-Departmental



## DEPARTMENT MISSION

**THE MISSION OF NON-DEPARTMENTAL IS TO AGGREGATE CITYWIDE FUNDING NEEDS THAT ARE NOT IDENTIFIED WITH ANY ONE DEPARTMENT.**

## MAJOR BUDGET CHANGES

Non-Departmental's Major Budget Changes - General Fund		Amount	Positions
1.	Increases salary reserve for potential cost of living increases	\$13,447,164	
2.	Adds funding for potential salary increases based on the Classification and Compensation Study	\$2,791,000	
3.	Increases contingency for potential unforeseen expenditures	\$1,980,236	
4.	Increases the subsidy for the management of the Paycom Center, Prairie Surf Studios and the Oklahoma City Convention Center	\$1,150,912	
5.	Increases funding for various task force recommendation to \$2.4 million	\$1,100,000	
6.	Increases funding for LED streetlights and electricity	\$1,043,700	
7.	Increases the payment to OCEDT	\$1,050,000	

## EXPENDITURES

Summary of Expenditures by Funding Source	FY21 Actual	FY22 Adopted Budget	FY23 Adopted Budget	Percent Change
Better Streets Safer City Use Tax	\$0	\$388,077	\$282,012	-27.33%
Capital Improvement Projects Fund	5,842,844	32,295,028	41,960,098	29.93%
City and School Capital Project Use Tax	0	3,521,687	969,000	-72.48%
Debt Service Fund	103,371,515	120,736,539	125,884,695	4.26%
General Fund - Operating	80,405,059	75,671,225	101,209,410	33.75%
General Fund - Non-Operating	114,318,193	117,103,316	132,062,015	12.77%
Grant Management Fund	101,868,000	137,500,000	58,000,000	-57.82%
Hotel/Motel Tax Spec Revenue Fund	14,467,155	19,852,446	26,854,847	35.27%
MAPS 3 Use Tax	0	2,811,755	1,684,699	-40.08%
MAPS 4 Use Tax	0	28,425,359	13,887,236	-51.14%
MAPS Operations Fund	966,584	2,317,433	2,236,116	-3.51%
Medical Service Program	8,828,620	6,882,212	7,343,152	6.70%
OKC Improv & Spec Svcs Assess Dist	2,541,299	4,543,720	5,142,058	13.17%
Police and Fire Capital Equipment	0	0	100,000	N/A
Sales Tax Fund				
Special Assessment Districts	2,457,029	3,331,214	1,754,000	-47.35%
Special Purpose Fund	0	4,000,000	5,049,908	26.25%
<b>Department Total</b>	<b><u>\$435,066,298</u></b>	<b><u>\$559,380,011</u></b>	<b><u>\$524,419,246</u></b>	<b><u>-6.25%</u></b>

# RESPONSIBILITIES

## SUMMARY OF DEPARTMENTAL RESPONSIBILITIES

Non-Departmental is a budgeting mechanism for identifying and funding programs that are City-wide in nature. Non-Departmental also funds miscellaneous projects that reflect Council Policy. Included under this mechanism are such expenses as:

- Utilities
- Economic Development Resources
- Contingency Reserves
- Retiree Health Subsidy

No direct services are provided to citizens and no staff positions are assigned to this department.