



City Manager Report

The City of OKLAHOMA CITY

NO: 1846

DATE: July 5, 2022

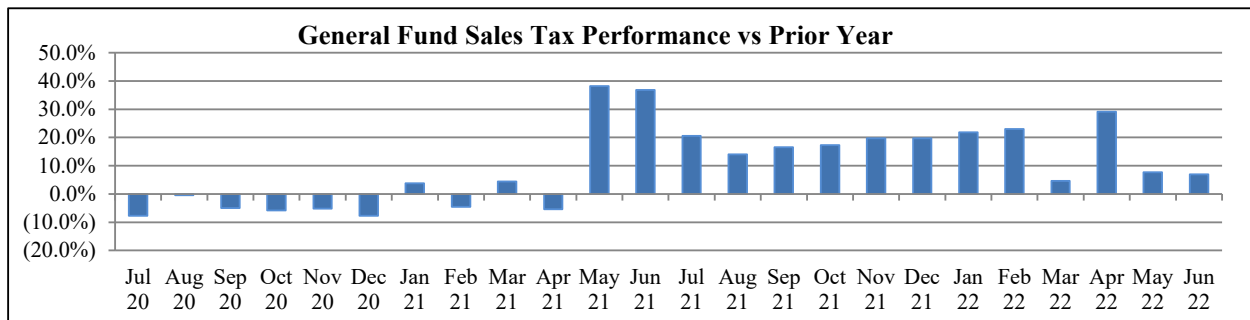
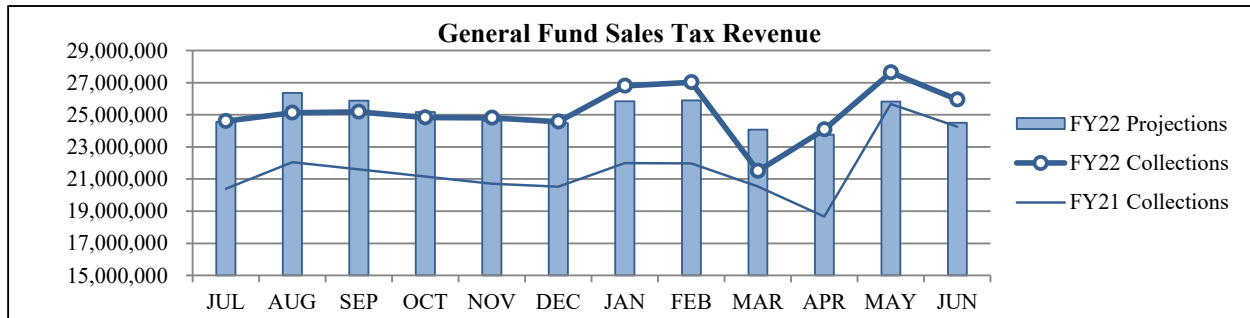
TO: THE MAYOR AND MEMBERS OF THE CITY COUNCIL

SUBJECT: JUNE 2022 SALES AND USE TAX COLLECTIONS

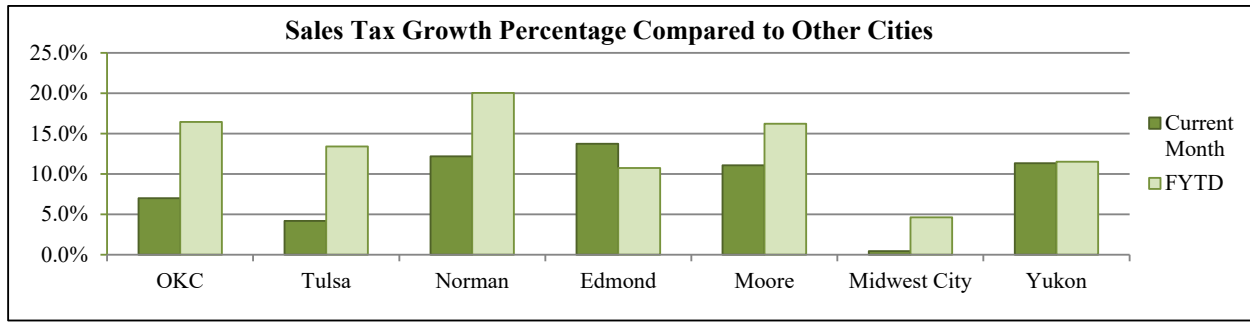
The June remittance is made up primarily of actual collections for the last half of April and estimated collections for the first half of May along with smaller amounts for corrections and reconciling amounts from prior estimates. Combined sales and use taxes for the General Fund are \$3,763,325 or 1.0% above projections for the year.

General Fund Sales Tax

SALES TAX PERFORMANCE (vs Projection)				SALES TAX PERFORMANCE (vs Prior Year)			
June FY22	Projection	\$ Diff	% Change	June FY22	June FY21	\$ Diff	% Change
25,974,215	24,511,581	1,462,634	6.0%	25,974,215	24,259,176	1,715,039	7.1%
YTD FY22	YTD Proj	\$ Diff	% Change	YTD FY22	YTD FY21	\$ Diff	% Change
302,118,227	300,982,460	1,135,767	0.4%	302,118,227	259,536,257	42,581,970	16.4%



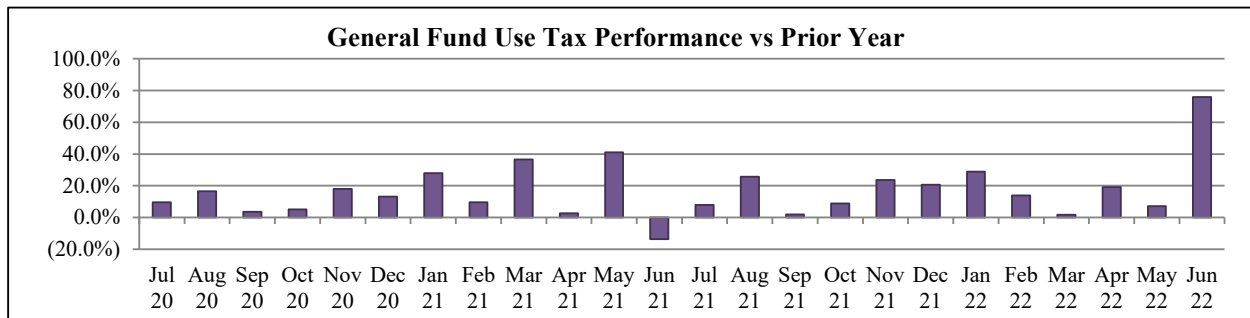
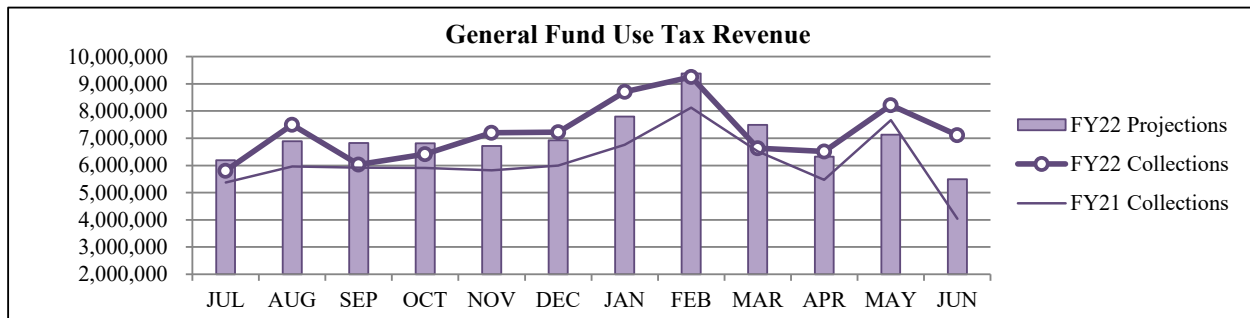
Sales Tax Comparison to Other Cities



Edmond sale tax rate increased by .25% beginning January 1, 2022.

General Fund Use Tax

USE TAX PERFORMANCE (vs Projection)				USE TAX PERFORMANCE (vs Prior Year)			
June FY22	Projection	\$ Diff	% Change	June FY22	June FY21	\$ Diff	% Change
8,207,075	5,496,087	2,710,988	49.3%	8,207,075	4,041,284	4,165,792	103.1%
YTD FY22	YTD Proj	\$ Diff	% Change	YTD FY22	YTD FY21	\$ Diff	% Change
86,620,537	83,992,979	2,627,558	3.1%	86,620,537	73,573,274	13,047,263	17.7%



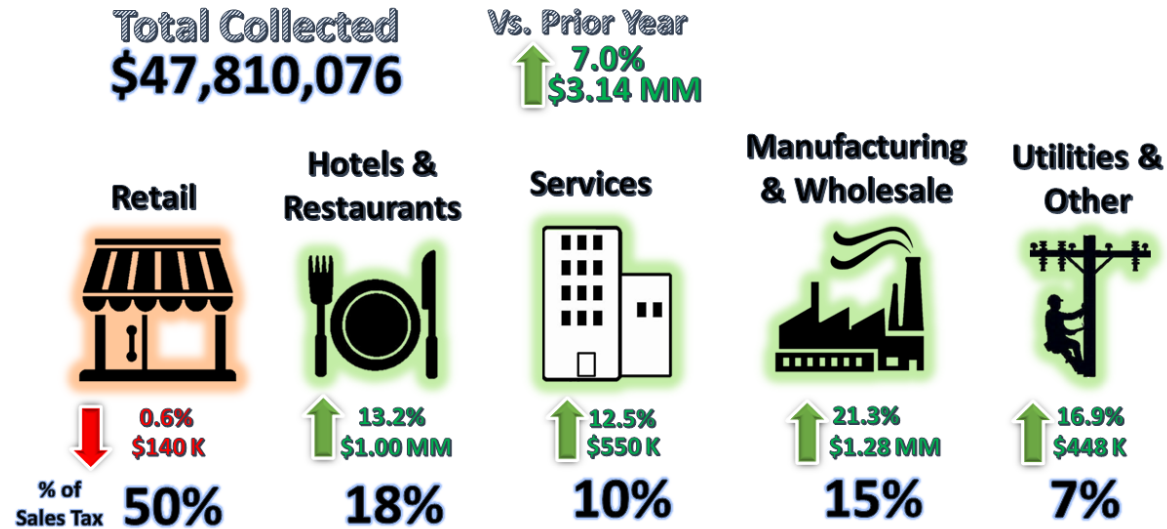
NAICS Categories Performance

The North American Industry Classification System (NAICS) is the U.S. standard for categorizing and describing types of businesses when analyzing economic information. The City groups all NAICS codes into several general categories when analyzing sales and use tax trends within the local economy. The NAICS system was last updated in 2017. More information can be found on the U.S. Census Bureau website at <https://www.census.gov/eos/www/naics/>.

Sales Tax NAICS Performance

Retail comprises the largest percentage of sales tax collections at around 50%. The largest year-over-year category changes for June were in Wholesale and Manufacturing (up \$1.28 million), Hotels and Restaurants (up \$1.0 million), and Services (up \$550 thousand).

SALES TAX PERFORMANCE



NAICS SALES TAX PERFORMANCE (vs Prior Year)				
NAICS Category	June FY22	June FY21	\$ Diff	% Change
Wholesale & Mfg.	7,269,134	5,990,877	1,278,256	21.3%
Hotels & Restaurants	8,567,618	7,567,896	999,722	13.2%
Services	4,958,471	4,408,420	550,051	12.5%
Utilities & Other	3,091,389	2,643,699	447,690	16.9%
Retail	23,923,464	24,063,910	(140,445)	-0.6%
Total	47,810,076	44,674,802	3,135,275	7.0%

Percentages may differ from General Fund Tax Performance since NAICS detail includes interest, penalty, retention, and reallocation amounts.

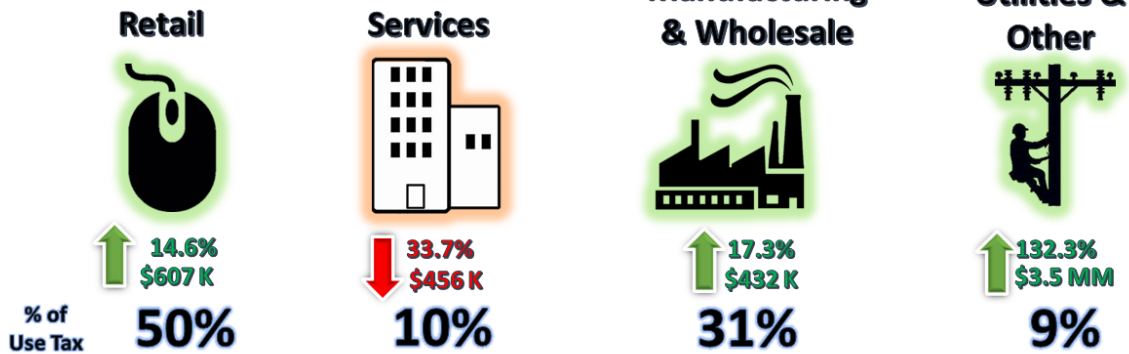
Use Tax NAICS Performance

Retail also comprises the largest percentage of use tax collections. The largest year-over-year category changes for June were in Utilities and Other (up \$3.5 million) due to a large multiyear refund in prior year and Retail (up \$607 thousand).

USE TAX PERFORMANCE

Total Collected
\$9,432,926


Vs. Prior Year
↑ 76.1%
↑ \$4.1 MM



NAICS USE TAX PERFORMANCE (vs Prior Year)				
NAICS Category	June FY22	June FY21	\$ Diff	% Change
Utilities & Other	853,611	(2,639,320)	3,492,931	132.3%
Retail	4,753,758	4,146,383	607,375	14.6%
Services	896,713	1,352,265	(455,552)	-33.7%
Wholesale & Mfg.	2,928,844	2,496,803	432,042	17.3%
Total	9,432,926	5,356,131	4,076,796	76.1%

Percentages may differ from General Fund Tax Performance since NAICS detail includes interest, penalty, retention, and reallocation amounts.

Staff is available should you have questions or require additional information.


Craig Freeman
City Manager

CITY OF OKLAHOMA CITY
SALES TAX COLLECTIONS
June 2022

	<u>General Fund</u>	<u>General Fund MAPS 4 Program</u>	<u>Police Public Safety</u>	<u>Fire Public Safety</u>	<u>Zoo</u>	<u>Better Streets Safer City</u>	<u>MAPS 3</u>	<u>Sports Facilities Improvement</u>	<u>MAPS for Kids</u>	<u>Police/Fire Equipment</u>	<u>MAPS</u>	<u>Total Sales Tax</u>
Current Month:												
Actual	\$25,960,223	\$11,537,877	\$4,326,704	\$4,326,704	\$1,442,235	-	-	-	-	-	-	\$47,593,743
Reallocations	\$13,992	(\$36,808)	\$2,400	\$2,400	\$800	\$15,589	\$1,628	-	-	-	-	-
Adjusted Actual	\$25,974,215	\$11,501,069	\$4,329,104	\$4,329,104	\$1,443,035	\$15,589	\$1,628	-	-	-	-	\$47,593,743
Projection	\$24,511,581	\$10,894,037	\$4,086,078	\$4,086,024	\$1,362,007	-	-	-	-	-	-	\$44,939,727
+/- Projection	\$1,462,634	\$607,032	\$243,026	\$243,080	\$81,027	\$15,589	\$1,628	-	-	-	-	\$2,654,015
% +/- Projection	6.0%	5.6%	5.9%	5.9%	5.9%	-	-	-	-	-	-	5.9%
Prior Year Actual	\$24,259,176	\$10,791,679	\$4,043,660	\$4,043,660	\$1,347,887	(\$19,834)	\$15,045	(\$3,601)	(\$242)	\$15	-	\$44,477,447
+/- Prior Year	\$1,715,039	\$709,390	\$285,443	\$285,443	\$95,148	\$35,423	(\$13,418)	\$3,601	\$242	(\$15)	-	\$3,116,296
% +/- Prior Year	7.1%	6.6%	7.1%	7.1%	7.1%	-178.6%	-89.2%	-100.0%	-100.0%	-100.0%	-	7.0%
Year-to-Date:												
Actual	\$302,214,610	\$134,312,628	\$50,367,236	\$50,367,236	\$16,789,079	-	-	-	-	-	-	\$554,050,788
Reallocations	(\$96,383)	(\$562,647)	\$907	\$907	\$302	\$249,649	\$402,293	\$403	\$4,208	\$357	\$3	-
Adjusted Actual	\$302,118,227	\$133,749,981	\$50,368,143	\$50,368,143	\$16,789,381	\$249,649	\$402,293	\$403	\$4,208	\$357	\$3	\$554,050,788
Projection	\$300,982,460	\$133,769,983	\$50,164,436	\$50,164,382	\$16,721,460	-	-	-	-	-	-	\$551,802,721
+/- Projection	\$1,135,767	(\$20,002)	\$203,707	\$203,761	\$67,920	\$249,649	\$402,293	\$403	\$4,208	\$357	\$3	\$2,248,067
% +/- Projection	0.4%	0.0%	0.4%	0.4%	0.4%	-	-	-	-	-	-	0.4%
Prior Year Actual	\$259,536,257	\$114,318,193	\$43,253,152	\$43,253,152	\$14,417,718	\$1,092,980	(\$60,858)	(\$14,712)	\$2,262	\$1,212	\$628	\$475,799,984
+/- Prior Year	\$42,581,970	\$19,431,789	\$7,114,990	\$7,114,990	\$2,371,663	(\$843,332)	\$463,151	\$15,115	\$1,946	(\$854)	(\$625)	\$78,250,804
% +/- Prior Year	16.4%	17.0%	16.4%	16.4%	16.4%	-77.2%	-761.0%	-102.7%	86.1%	-70.5%	-99.5%	16.4%
		(1)				(2)	(3)	(3)	(3)	(3)	(3)	(4)

NOTES:

- (1) The **General Fund MAPS 4 Program** tax began on April 1, 2020
- (2) The **Better Streets Safer City** tax began January 1, 2018. It replaced the MAPS 3 tax that expired December 31, 2017.
- (3) The **MAPS 3, Sports Facilities Improvement, Maps for Kids, Police/Fire Equipment** and **MAPS** taxes expired in prior years, therefore, only current year reallocation activity is presented for these funds.
- (4) The percentages listed will differ from those on the Sales and Use Tax City Manager Report slightly due to the inclusion of administrative fee, interest and reallocation on that report.

CITY OF OKLAHOMA CITY
USE TAX COLLECTIONS
June 2022

	<u>General Fund</u>	<u>MAPS 4 Program</u>	<u>Better Streets Safer City</u>	<u>MAPS 3</u>	<u>Sports Facilities Improvement</u>	<u>City & Schools</u>	<u>Police/Fire Equipment</u>	<u>MAPS</u>	<u>Total Use Tax</u>
Current Month:									
Actual	\$7,114,225	\$2,276,552	-	-	-	-	-	-	\$9,390,777
Reallocations	\$1,089	\$25,304	(\$18,001)	(\$8,392)	-	-	-	-	-
Adjusted Actual	\$7,115,314	\$2,301,856	(\$18,001)	(\$8,392)	-	-	-	-	\$9,390,777
Projection	\$5,496,087	\$1,758,746	-	-	-	-	-	-	\$7,254,833
+/- Projection	\$1,619,227	\$543,111	(\$18,001)	(\$8,392)	-	-	-	-	\$2,135,944
%+/- Projection	29.5%	30.9%	-	-	-	-	-	-	29.4%
Prior Year Actual	\$4,041,284	\$1,308,769	\$3,388	(\$466)	(\$20,124)	(\$3)	-	-	\$5,332,847
+/- Prior Year	\$3,074,030	\$993,087	(\$21,389)	(\$7,926)	\$20,124	\$3	-	-	\$4,057,930
%+/- Prior Year	76.1%	75.9%	-631.4%	-1699.9%	-100.0%	-100.0%	-	-	76.1%
Year-to-Date:									
Actual	\$86,583,044	\$27,706,574	-	-	-	-	-	-	\$114,289,618
Reallocations	\$37,493	\$1,248,160	(\$20,062)	(\$1,052,181)	(\$213,415)	\$6	-	-	-
Adjusted Actual	\$86,620,537	\$28,954,734	(\$20,062)	(\$1,052,181)	(\$213,415)	\$6	-	-	\$114,289,618
Projection	\$83,992,979	\$26,877,718	-	-	-	-	-	-	\$110,870,697
+/- Projection	\$2,627,558	\$2,077,016	(\$20,062)	(\$1,052,181)	(\$213,415)	\$6	-	-	\$3,418,921
%+/- Projection	3.1%	7.7%	-	-	-	-	-	-	3.1%
Prior Year Actual	\$73,573,274	\$23,604,016	\$135,135	(\$117,979)	(\$96,459)	\$1,636	\$3	\$0	\$97,099,625
+/- Prior Year	\$13,047,263	\$5,350,718	(\$155,197)	(\$934,202)	(\$116,956)	(\$1,630)	(\$3)	(\$0)	\$17,189,993
%+/- Prior Year	17.7%	22.7%	-114.8%	791.8%	121.2%	-99.7%	-100.0%	-100.0%	17.7%
		(1)	(2)	(3)	(3)	(3)	(3)	(3)	(4)

NOTES:

- (1) The **MAPS 4 Program** tax began on April 1, 2020
- (2) The **Better Streets Safer City** tax began January 1, 2018. It replaced the MAPS 3 tax that expired December 31, 2017.
- (3) The **MAPS 3, Sports Facilities Improvement, City & Schools, Police/Fire Equipment** and **MAPS** taxes expired in prior years, therefore, only current year reallocation activity is presented for these funds.
- (4) The percentages listed will differ from those on the Sales and Use Tax City Manager Report slightly due to the inclusion of administrative fee, interest and reallocation on that report.