

# Asian Night Market Festival

August 20, 2022

Military Park - Schedule of Events



Asian  
District  
Cultural  
Association

## **Thursday, August 18, 2022**

5:00PM - 6:00PM Virtual Volunteer Team Meeting

6:00PM - 8:00PM Tentative Virtual Food Vendors Preparation meeting with Oklahoma County Health Department. Informational Meeting

## **Friday, August 19, 2022**

TBD Rental Company will deliver portable restrooms, handwashing stations, and hand sanitizing stations, light towers, generators.

First Maintenance will be on site to do pre-wash and cleanup.

5:00PM Road Closure Signage and No Parking Signage will be placed for interior streets closures

5:30PM - Volunteers Meeting at Military Park

5:30PM – 8:30PM Volunteers and contracted companies will put up tents, light towers, and generators in appropriate places.

## **Saturday, August 20, 2022**

8:00AM Road Closure Signage will be placed (Type III Barricades) to close Classen

8:30AM-10:30AM Volunteers to place tables, chairs, events banners, boards with map, programming, and additional signage. First Maintenance will be on site to drop off trash cans.

11:00AM - 1:00PM Food Trucks and Food Vendors check-in. Unload and Setup.

12:00PM - 2:00PM Retail vendor check-in. Unload and Setup.

2:00PM - 4:00PM Oklahoma County Health Department Food Vendor Inspections.

### **5:00PM Festival Begins**

5:00PM -10:00PM On stage Programming

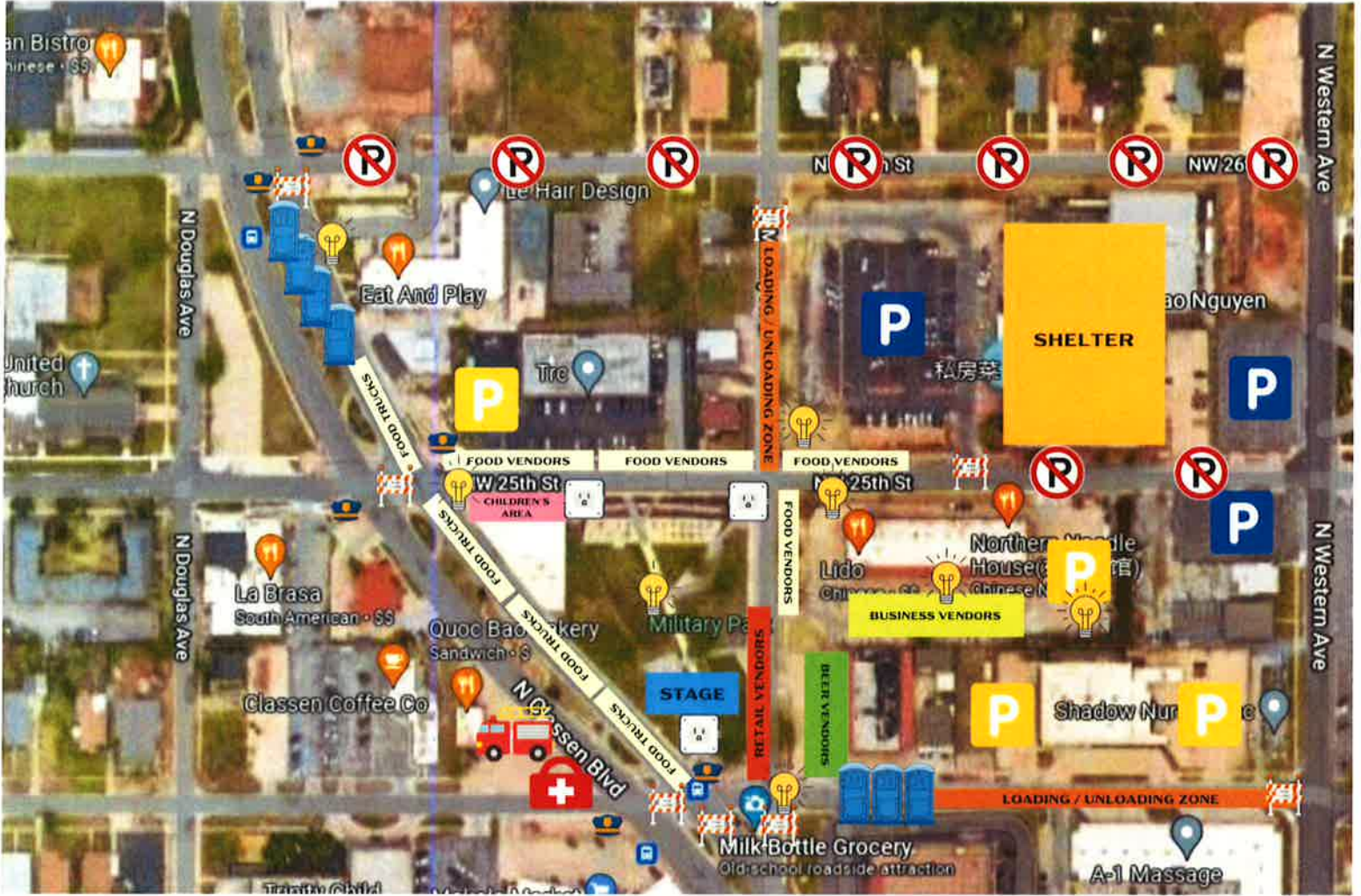
9:30PM - 10:45 PM Last Call for Alcohol

10:00PM - 11:30 PM DJ and Dance Party on Stage

### **11:30 PM Call to End Event**

11:30PM - 2:00AM Breakdown and Teardown. Contracted Signage

*Company to Remove Road Closure Signage on Classen immediately after event. First Maintenance will be on site to pick up trash cans, power wash if necessary, and do a final clean up of the park.*



FIRE DEPT



OKCPD



GENERAL PARKING



NO PARKING



POWER SOURCE



EMSA



ROAD CLOSURE



VENDOR PARKING



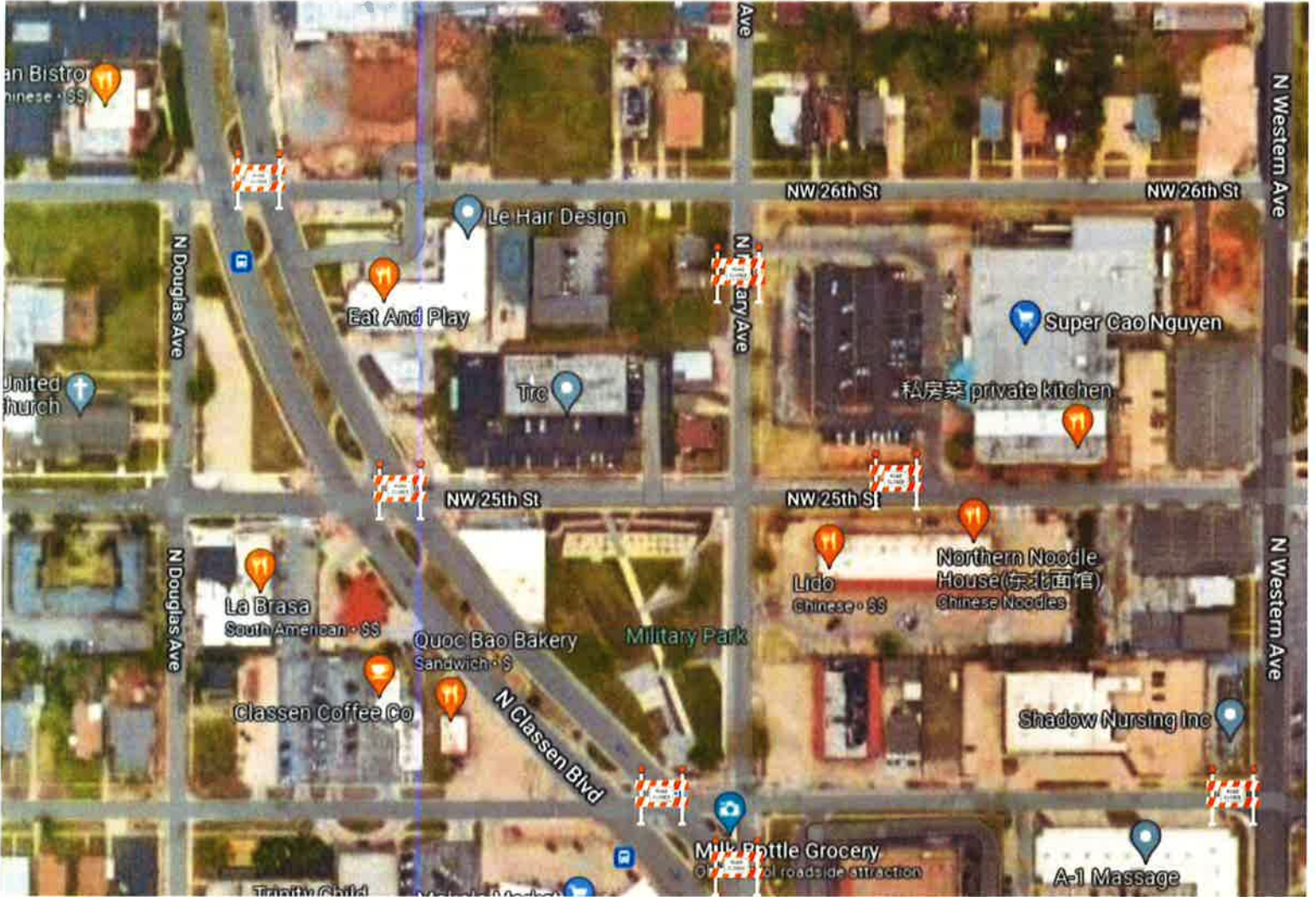
THREE RESTROOMS



LIGHT TOWER





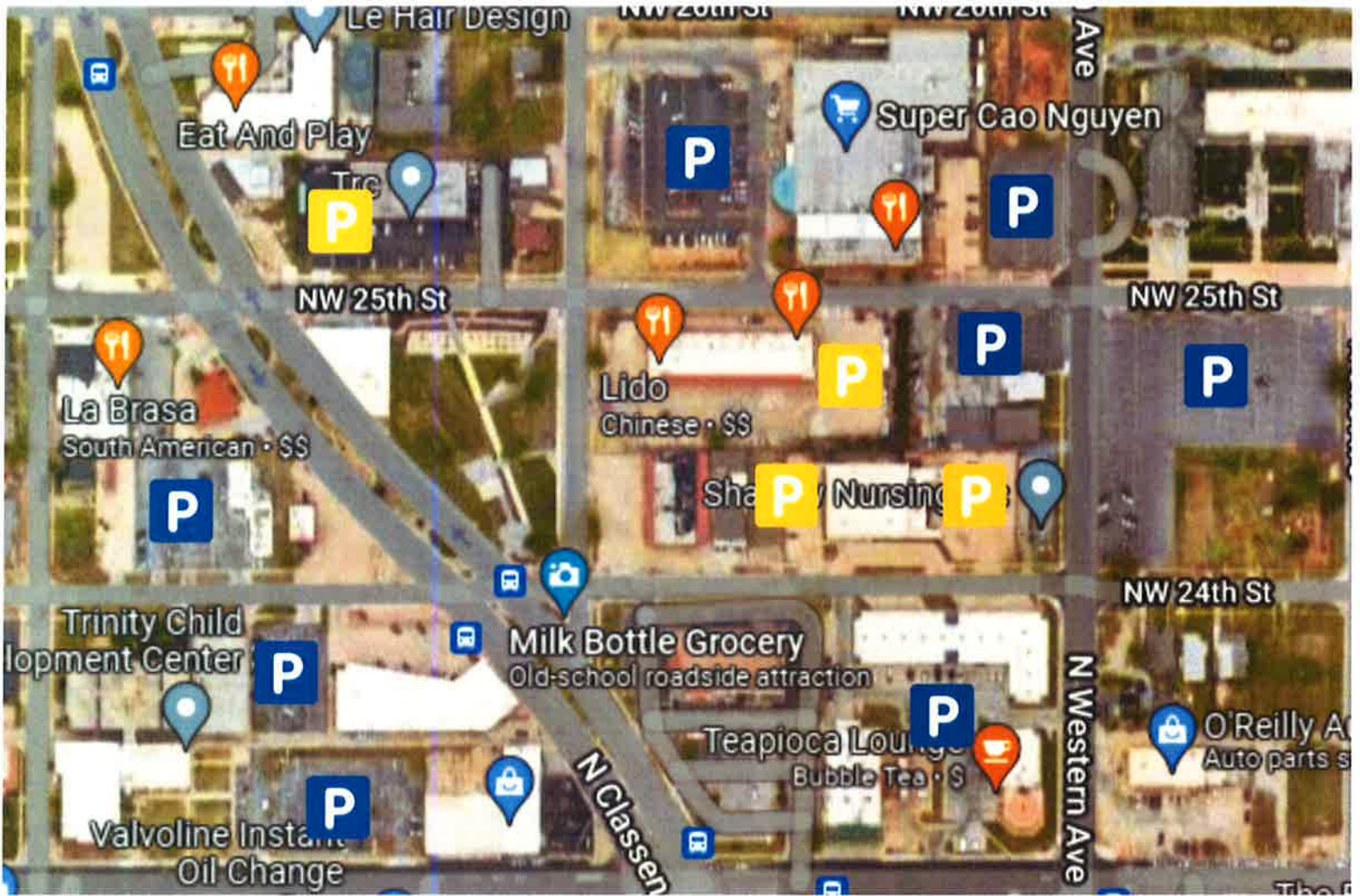


## ROAD CLOSURES

Exclusively closing the northbound lanes of North Classen Boulevard from Northwest 24th Street north to Northwest 26th Street, Northwest 24th Street from North Classen Boulevard east to North Western Avenue, Northwest 25th Street from North Classen Boulevard east to a point directly west of the entrance to the parking lot of 2668 North Military Avenue, North Military Ave from 24th street to a point directly south of the entrance to the parking lot of 2668 North Military Avenue,







**PARKING PLAN**



VENDOR  
PARKING



GENERAL  
PARKING







## SAFETY PLAN

