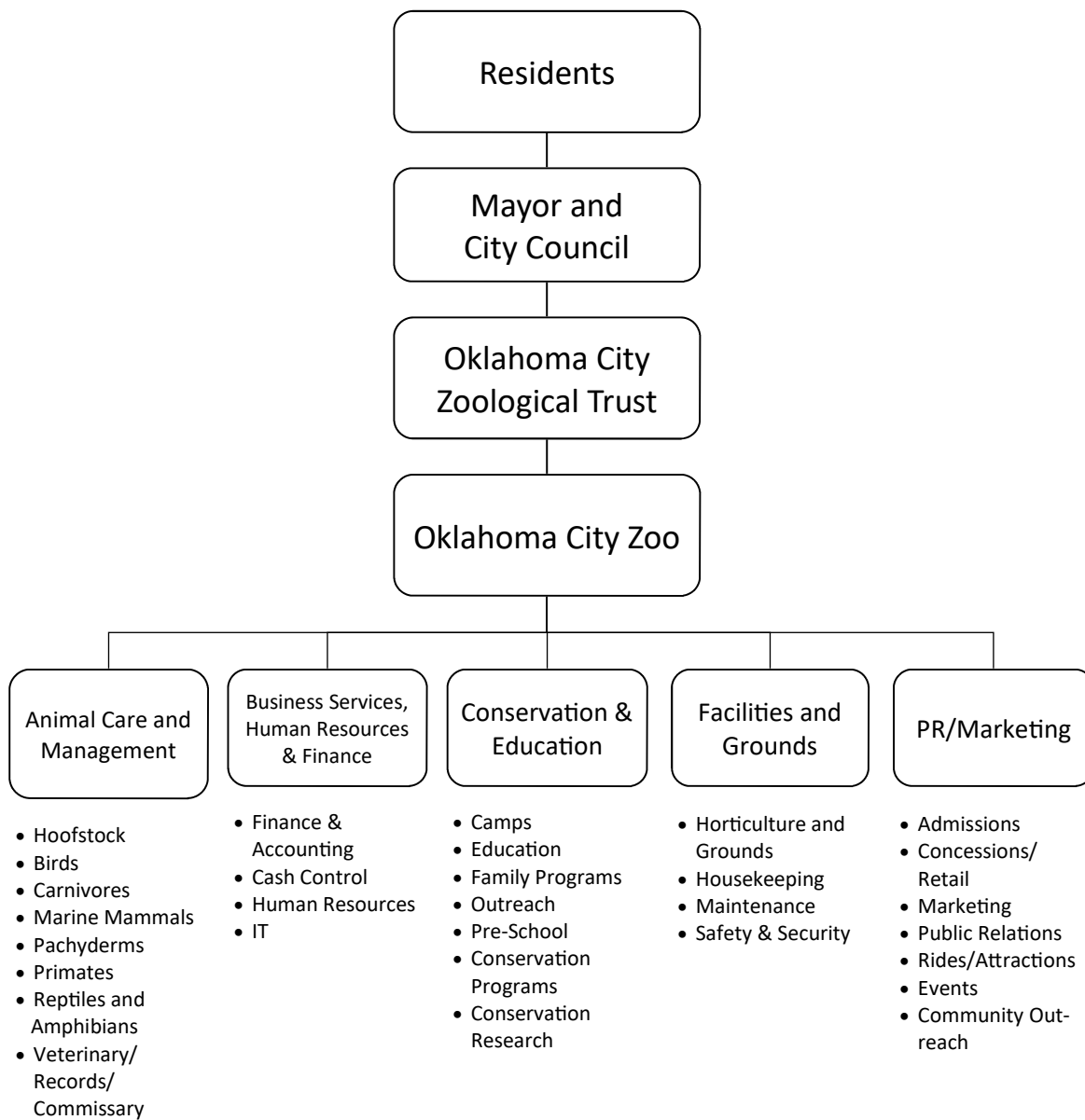


# Zoo



Executive Director / CEO	Budget
Dr. Dwight Lawson	\$19,087,397

## DEPARTMENT INTRODUCTION

The Oklahoma City Zoo budget is managed and positions are funded through the Oklahoma City Zoological Trust.

On July 17, 1990, the Oklahoma City voters approved a one-eighth cent sales tax levy for the limited purpose of funding the Oklahoma City Zoo and Botanical Garden. The Oklahoma City Zoo Sales Tax Fund was created to collect all revenues pursuant to the Zoo tax levy. The ordinance provides that Zoo Sales Tax funds will only be used for the establishment, maintenance, replacement, and expansion of zoological parks, gardens, and entertainment facilities; the acquisition, maintenance, and replacement of real property, personal property, and buildings; the operational expenses, education research and program expenses, conservation program expenses, and all other expenses deemed necessary or advisable by the Oklahoma City Zoological Trust in connection with the operation of the Oklahoma City Zoo. The Oklahoma City Zoological Trust is a public trust of which the City of Oklahoma City is the sole beneficiary. The Trust operates the Oklahoma City Zoo under a lease and operating agreement with the City.

### Department Facts

- Oklahoma City Zoo and Botanical Garden is Oklahoma's premier destination for connecting people to wildlife and wild places to inspire conservation action. In 2022, the Zoo connected guests to its animals, expert caretakers and conservation initiatives through events such as Brick-Live, Sip and Stroll, SAFARI LIGHTS and more. More than 167,000 visitors, 3 and up, received free or discounted admission in 2022 through one of many programs and partnerships designed to make the Zoo as accessible as possible for all Oklahomans
- Construction continues for Expedition Africa, the Zoo's latest and largest habitat expansion project to date. Slated to open in spring 2023, the new 13-acre project will provide guests with more immersive wildlife experiences and larger habitats for animals native to the African continent including giraffe, zebra, wildebeest, ostrich, meerkats, African painted dog, cheetah, lemurs, honey badger and more



## EXPENDITURES

Summary of Expenditures by Funding Source	FY22 Actual	FY23 Adopted Budget	FY24 Proposed Budget	Percent Change
Zoo Sales Tax Fund	<u>\$16,789,381</u>	<u>\$16,757,366</u>	<u>\$19,087,397</u>	13.90%
<b>Fund Total</b>	<u><b>\$16,789,381</b></u>	<u><b>\$16,757,366</b></u>	<u><b>\$19,087,397</b></u>	<b>13.90%</b>



