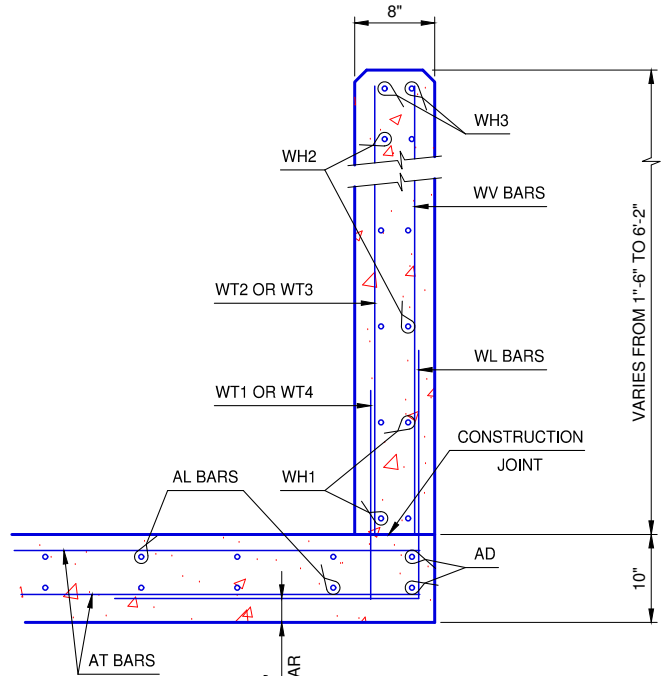


WINGWALL ELEVATION

SEE STD. RCB-015 PipeRailing FOR DETAILS OF RAIL REQUIRED ON TOP OF HEADWALL AND WINGS



TYPICAL SECTION THRU WING

ADJUSTMENT IN NUMBER OF BARREL BARS IN END SECTION

SPAN	BAR MARKS					
	A1	A2	B1	B2	C1	C2
4'	+1		+2	+2		
5'	+1		+2	+2		
6'			+2	+2		
7'			+2	+2		
8'			+2	+2		
9'					+2	+2
10'					+2	+2
11'					+2	+2

NOTE: TO CONSTRUCT ONE END SECTION AS SHOWN, THE NUMBER OF BARS SHOWN NEED TO BE ADDED TO OR SUBTRACTED FROM THE TOTAL WEIGHT OF REINFORCING FOR THE BARREL. THIS WEIGHT ADJUSTMENT IS INCLUDED IN THE END SECTION QUANTITY. SEE BARREL DETAILS FOR BAR LENGTHS, SIZES AND BENDS.

WINGWALL BAR LIST

ONE WINGWALL SHOWN, TWO REQUIRED

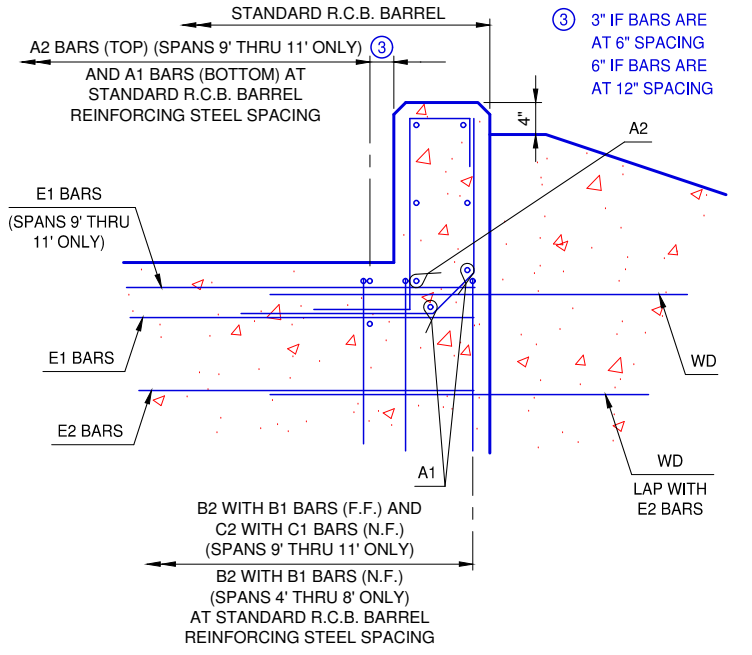
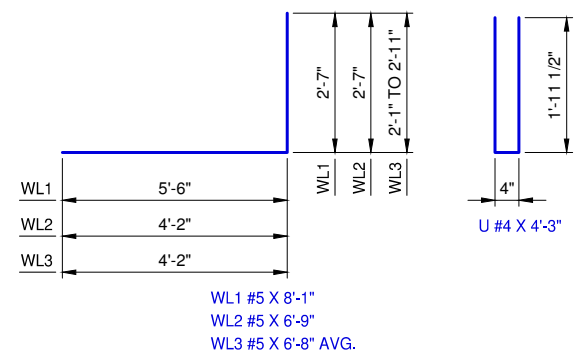
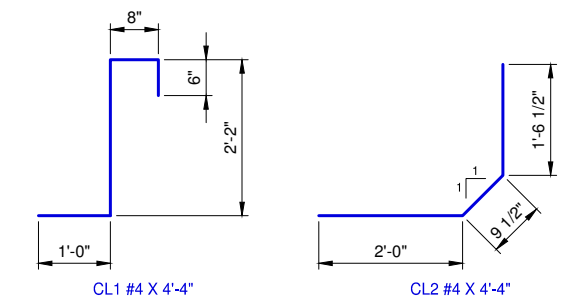
MARK	SIZE	NO.	FORM	LENGTH	LENGTH VARIATION
WD	#5	5	BNT.	5'-4"	
WH1	#4	4	STR.	16'-9"	
WH2	#4	8	STR.	8'-9" AVG.	3'-7" TO 13'-11"
WH3	#5	2	STR.	16'-9"	
WL1	#5	15	BNT.	8'-1"	
WL2	#5	5	BNT.	6'-9"	
WL3	#5	4	BNT.	6'-8" AVG.	6'-3" TO 7'-1"
WT1	#4	14	STR.	2'-3"	
WT2	#4	2	STR.	6'-0"	
WT3	#4	12	STR.	4'-3" AVG.	2'-8" TO 5'-10"
WT4	#4	4	STR.	2'-6" AVG.	2'-1" TO 2'-11"
WV1	#5	2	STR.	6'-0"	
WV2	#5	12	STR.	4'-3" AVG.	2'-8" TO 5'-10"
U	#4	1	BNT.	4'-3"	

ADDITIONAL BARS REQUIRED IN 9', 10' AND 11' SPANS
ONE WINGWALL SHOWN, TWO REQUIRED

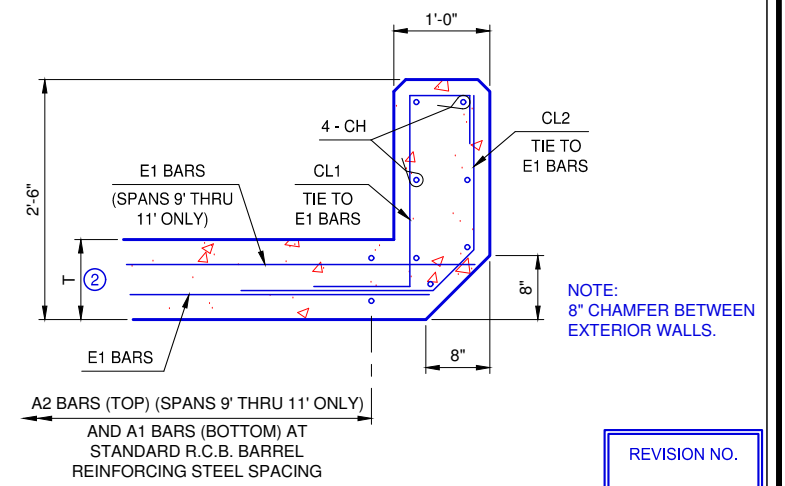
WD	#5	5	BNT.	5'-4"	
----	----	---	------	-------	--

① 2 SETS OF 4 BARS

② FOR T AND U DIMENSIONS, SEE BARREL DETAILS



HEADWALL DETAIL AT EXTERIOR WALL



HEADWALL DETAIL AT MIDSPAN

REVISION NO.

DATE

APPROVED BY: DATE: 6/22/2023
ERIC J. WENGER, P.E.
CITY ENGINEER

THESE STANDARD DRAWINGS AND ASSOCIATED CALCULATIONS HAVE BEEN PREPARED BY CEC CORPORATION UNDER CONTRACT WITH THE CITY OF OKLAHOMA CITY.

R.C.B. CULVERTS - END SECTION DETAILS
SINGLE CELL - 4' HEIGHT - 0° SKEW

SHEET NO. 2 OF 2

Drawing Number
RCB-019

The City of
Oklahoma City
Public Works Department
Engineering Division

