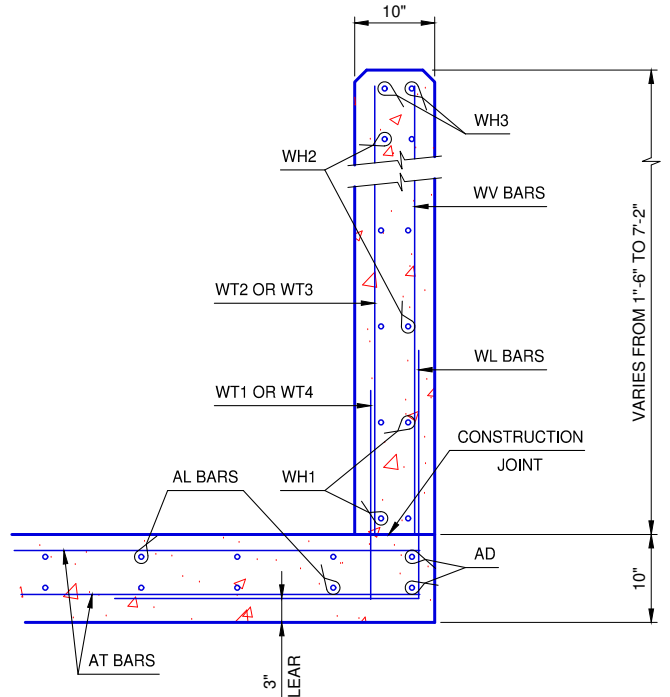


WINGWALL ELEVATION

SEE STD. RCB-015 PipeRailing FOR DETAILS OF RAIL REQUIRED ON TOP OF HEADWALL AND WINGS



TYPICAL SECTION THRU WING

ADJUSTMENT IN NUMBER OF BARREL BARS IN END SECTION

SPAN	BAR MARKS					
	A1	A2	B1	B2	C1	C2
5'	+1		+2	+2		
6'			+2	+2		
7'						
8'						
9'					+2	+2
10'					+2	+2
11'					+2	+2
12'					+2	+2

NOTE:
TO CONSTRUCT ONE END SECTION AS SHOWN, THE NUMBER OF BARS SHOWN NEED TO BE ADDED TO OR SUBTRACTED FOR THE TOTAL WEIGHT OF REINFORCING FOR THE BARREL. THIS WEIGHT ADJUSTMENT IS INCLUDED IN THE END SECTION QUANTITY. SEE BARREL DETAILS FOR BAR LENGTHS, SIZES AND BENDS.

WINGWALL BAR LIST
ONE WINGWALL SHOWN, TWO REQUIRED

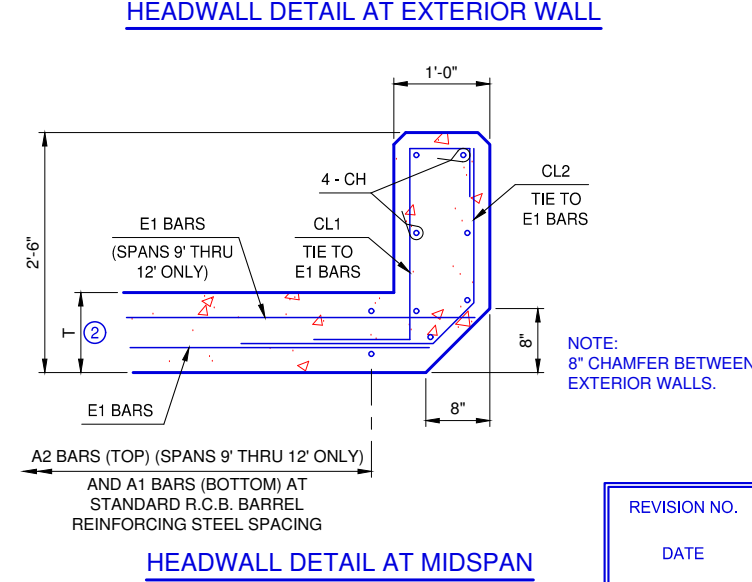
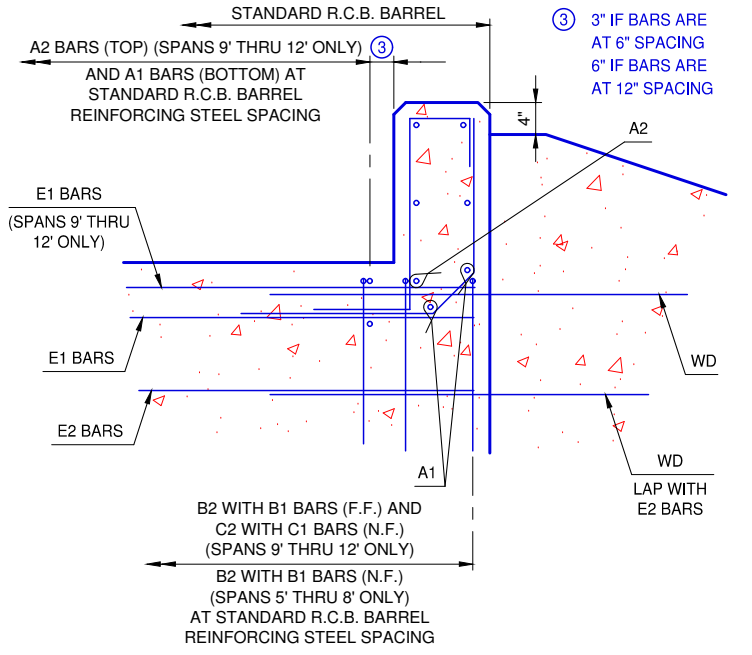
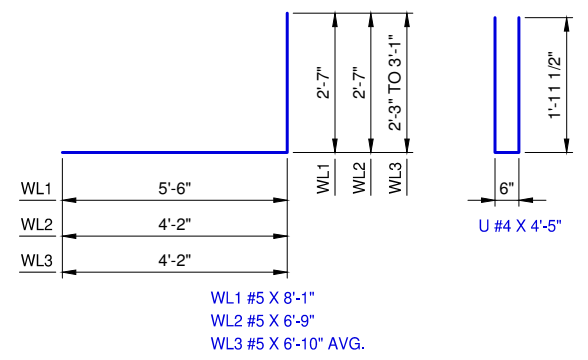
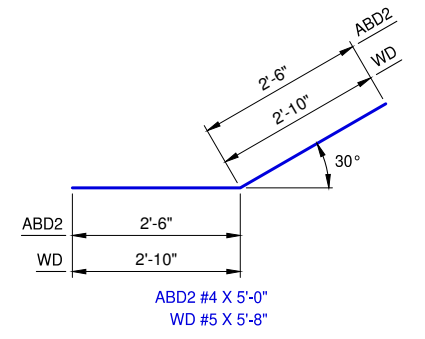
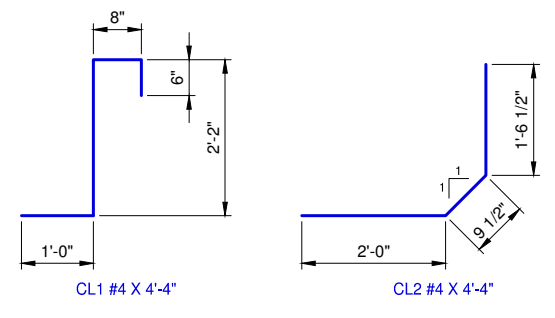
MARK	SIZE	NO.	FORM	LENGTH	LENGTH VARIATION
WD	#5	6	BNT.	5'-8"	
WH1	#4	4	STR.	20'-2"	
WH2	#4	10	STR.	10'-5" AVG.	3'-6" TO 17'-4"
WH3	#5	2	STR.	20'-2"	
WL1	#5	14	BNT.	8'-1"	
WL2	#5	9	BNT.	6'-9"	
WL3	#5	4	BNT.	6'-10" AVG.	6'-5" TO 7'-3"
WT1	#4	17	STR.	2'-3"	
WT2	#4	2	STR.	7'-0"	
WT3	#4	15	STR.	4'-10" AVG.	2'-10" TO 6'-10"
WT4	#4	4	STR.	2'-8" AVG.	2'-3" TO 3'-1"
WV1	#5	2	STR.	7'-0"	
WV2	#5	15	STR.	4'-10" AVG.	2'-10" TO 6'-10"
U	#4	1	BNT.	4'-5"	

ADDITIONAL BARS REQUIRED IN 9', 10', 11' AND 12' SPANS
ONE WINGWALL SHOWN, TWO REQUIRED

WD	#5	6	BNT.	5'-8"	
----	----	---	------	-------	--

① 2 SETS OF 5 BARS

② FOR T AND U DIMENSIONS, SEE BARREL DETAILS



REVISION NO.
DATE