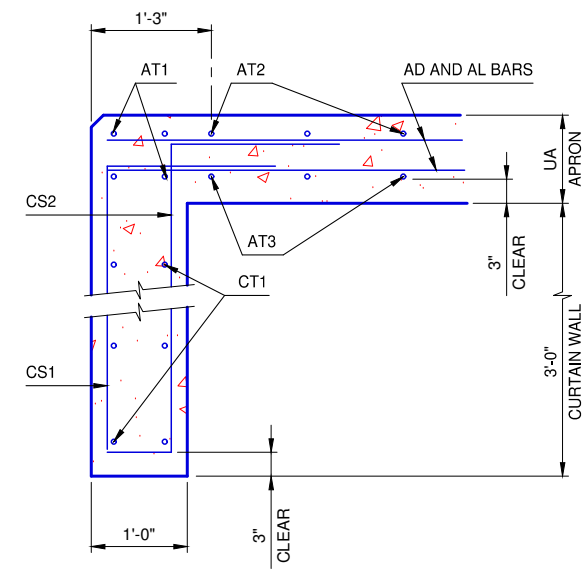
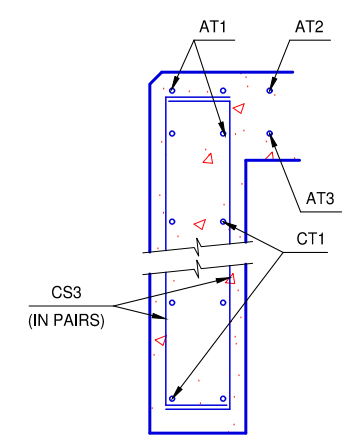


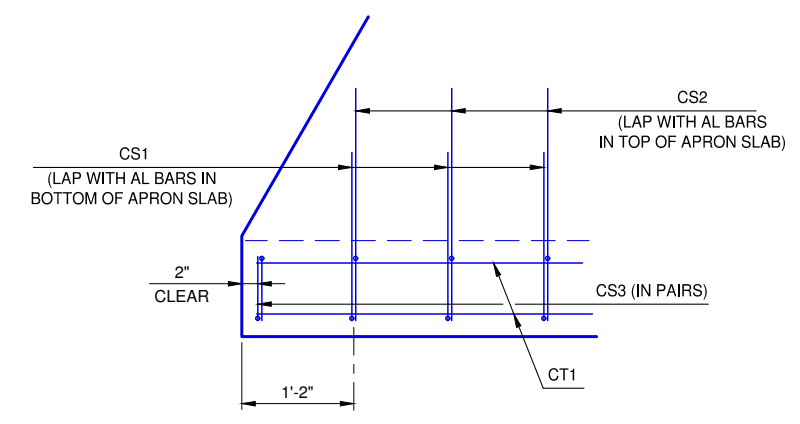
DIMENSIONS				REINFORCING STEEL								QUANTITIES	
CELL SPAN	CELL HEIGHT	UA	M	CS1 - #4		CS2 - #4		CS3 - #4		CT1 - #4 AT 12" MAX.		CONC. (C.Y.)	REINF. (LB.)
				NO.	LENGTH	NO.	LENGTH	NO.	LENGTH	NO.	LENGTH		
4'	3'	9"	3'-3"	18	4'-9"	18	5'-8"	4	4'-7"	6	18'-3"	2.1	220
4'	4'	10"	3'-4"	22	4'-9"	22	5'-9"	4	4'-8"	6	21'-9"	2.5	260
5'	3'	9"	3'-3"	19	4'-9"	19	5'-8"	4	4'-7"	6	19'-3"	2.2	230
5'	4'	10"	3'-4"	23	4'-9"	23	5'-9"	4	4'-8"	6	22'-9"	2.6	270
5'	5'	10"	3'-4"	27	4'-9"	27	5'-9"	4	4'-8"	6	26'-4"	3.0	310
6'	3'	9"	3'-3"	20	4'-9"	20	5'-8"	4	4'-7"	6	20'-3"	2.3	240
6'	4'	10"	3'-4"	24	4'-9"	24	5'-9"	4	4'-8"	6	23'-9"	2.7	280
6'	5'	10"	3'-4"	28	4'-9"	28	5'-9"	4	4'-8"	6	27'-4"	3.1	320
6'	6'	11"	3'-5"	30	4'-9"	30	5'-10"	4	4'-9"	6	31'-0"	3.5	350
7'	3'	9"	3'-3"	21	4'-9"	21	5'-8"	4	4'-7"	6	21'-3"	2.4	250
7'	4'	10"	3'-4"	25	4'-9"	25	5'-9"	4	4'-8"	6	24'-9"	2.8	290
7'	5'	10"	3'-4"	29	4'-9"	29	5'-9"	4	4'-8"	6	28'-4"	3.2	330
7'	6'	11"	3'-5"	31	4'-9"	31	5'-10"	4	4'-9"	6	32'-0"	3.6	370
7'	7'	11"	3'-5"	35	4'-9"	35	5'-10"	4	4'-9"	6	35'-7"	4.0	410
8'	3'	9"	3'-3"	22	4'-9"	22	5'-8"	4	4'-7"	6	22'-3"	2.6	260
8'	4'	10"	3'-4"	26	4'-9"	26	5'-9"	4	4'-8"	6	25'-9"	2.9	300
8'	5'	10"	3'-4"	30	4'-9"	30	5'-9"	4	4'-8"	6	29'-4"	3.3	350
8'	6'	11"	3'-5"	32	4'-9"	32	5'-10"	4	4'-9"	6	33'-0"	3.8	380
8'	7'	11"	3'-5"	36	4'-9"	36	5'-10"	4	4'-9"	6	36'-7"	4.2	420
8'	8'	12"	3'-6"	40	4'-9"	40	5'-11"	4	4'-10"	6	40'-0"	4.5	460
9'	3'	9"	3'-3"	23	4'-9"	23	5'-8"	4	4'-7"	6	23'-9"	2.7	270
9'	4'	10"	3'-4"	27	4'-9"	27	5'-9"	4	4'-8"	6	27'-3"	3.1	320
9'	5'	10"	3'-4"	31	4'-9"	31	5'-9"	4	4'-8"	6	30'-8"	3.5	360
9'	6'	11"	3'-5"	33	4'-9"	33	5'-10"	4	4'-9"	6	34'-2"	3.9	390
9'	7'	11"	3'-5"	37	4'-9"	37	5'-10"	4	4'-9"	6	37'-7"	4.3	430
9'	8'	12"	3'-6"	41	4'-9"	41	5'-11"	4	4'-10"	6	41'-2"	4.7	480
9'	9'	13"	3'-7"	45	4'-9"	45	6'-0"	4	4'-11"	6	44'-8"	5.0	520
10'	3'	9"	3'-3"	24	4'-9"	24	5'-8"	4	4'-7"	6	24'-9"	2.8	280
10'	4'	10"	3'-4"	28	4'-9"	28	5'-9"	4	4'-8"	6	28'-3"	3.2	330
10'	5'	10"	3'-4"	32	4'-9"	32	5'-9"	4	4'-8"	6	31'-8"	3.6	370
10'	6'	11"	3'-5"	34	4'-9"	34	5'-10"	4	4'-9"	6	35'-2"	4.0	400
10'	7'	11"	3'-5"	38	4'-9"	38	5'-10"	4	4'-9"	6	38'-7"	4.4	440
10'	8'	12"	3'-6"	42	4'-9"	42	5'-11"	4	4'-10"	6	42'-2"	4.8	490
10'	9'	13"	3'-7"	46	4'-9"	46	6'-0"	4	4'-11"	6	45'-8"	5.2	530
10'	10'	13"	3'-7"	48	4'-9"	48	6'-0"	4	4'-11"	6	49'-2"	5.5	560
11'	3'	9"	3'-3"	25	4'-9"	25	5'-8"	4	4'-7"	6	25'-9"	2.9	290
11'	4'	10"	3'-4"	29	4'-9"	29	5'-9"	4	4'-8"	6	29'-3"	3.3	340
11'	5'	10"	3'-4"	33	4'-9"	33	5'-9"	4	4'-8"	6	32'-8"	3.7	380
11'	6'	11"	3'-5"	35	4'-9"	35	5'-10"	4	4'-9"	6	36'-4"	4.1	410
11'	7'	11"	3'-5"	39	4'-9"	39	5'-10"	4	4'-9"	6	39'-9"	4.5	450
11'	8'	12"	3'-6"	43	4'-9"	43	5'-11"	4	4'-10"	6	43'-2"	4.9	500
11'	9'	13"	3'-7"	47	4'-9"	47	6'-0"	4	4'-11"	6	46'-10"	5.3	540
11'	10'	13"	3'-7"	49	4'-9"	49	6'-0"	4	4'-11"	6	50'-4"	5.7	570
11'	11'	14"	3'-8"	53	4'-9"	53	6'-1"	4	5'-0"	6	53'-10"	6.1	620
12'	5'	10"	3'-4"	34	4'-9"	34	5'-9"	4	4'-8"	6	33'-8"	3.8	390
12'	6'	11"	3'-5"	36	4'-9"	36	5'-10"	4	4'-9"	6	37'-4"	4.2	420
12'	7'	11"	3'-5"	40	4'-9"	40	5'-10"	4	4'-9"	6	40'-9"	4.6	460
12'	8'	12"	3'-6"	44	4'-9"	44	5'-11"	4	4'-10"	6	44'-2"	5.0	510
12'	9'	13"	3'-7"	48	4'-9"	48	6'-0"	4	4'-11"	6	47'-10"	5.4	550
12'	10'	13"	3'-7"	50	4'-9"	50	6'-0"	4	4'-11"	6	51'-4"	5.8	580
12'	11'	14"	3'-8"	54	4'-9"	54	6'-1"	4	5'-0"	6	54'-10"	6.2	630
12'	12'	14"	3'-8"	58	4'-9"	58	6'-1"	4	5'-0"	6	58'-3"	6.6	670



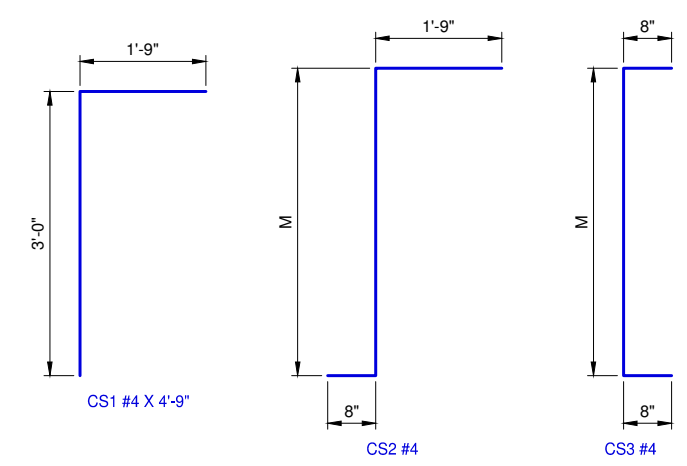
TYPICAL SECTION THRU CURTAIN WALL



TYPICAL SECTION THRU END OF CURTAIN WALL



CURTAIN WALL / APRON PLAN



REVISION NO.
DATE

The City of Oklahoma City  
Public Works Department  
Engineering Division

APPROVED BY: DATE: 6/22/2023  
ERIC J. WENGER, P.E.  
CITY ENGINEER

THESE STANDARD DRAWINGS AND ASSOCIATED CALCULATIONS HAVE BEEN PREPARED BY CEC CORPORATION UNDER CONTRACT WITH THE CITY OF OKLAHOMA CITY.

R.C.B. CULVERTS - CURTAIN WALL DETAILS  
SINGLE CELL - 3'-0" DEPTH - 0° SKEW

Drawing Number  
RCB-036