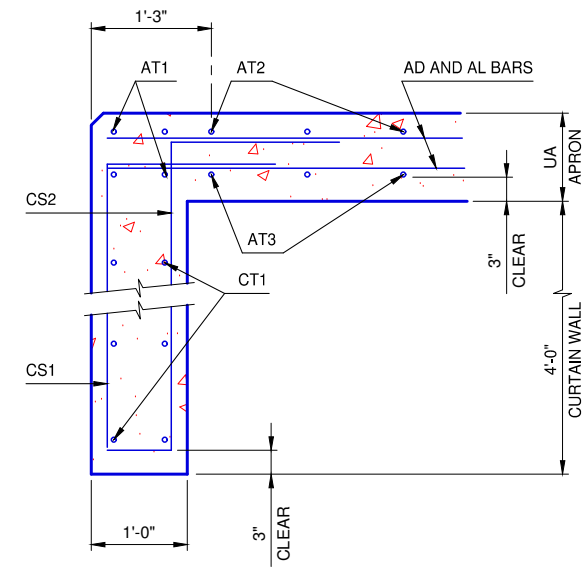
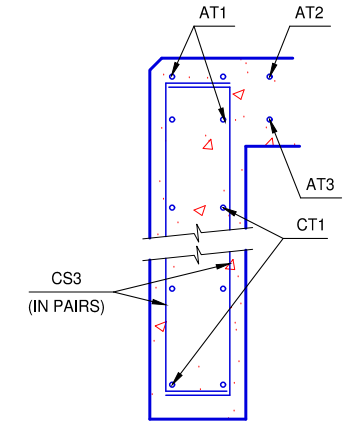


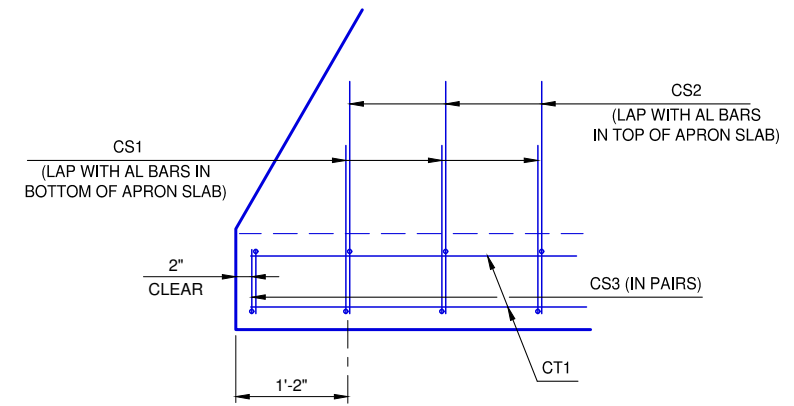
DIMENSIONS				REINFORCING STEEL								QUANTITIES	
CELL SPAN	CELL HEIGHT	UA	M	CS1 - #4		CS2 - #4		CS3 - #4		CT1 - #4 AT 12" MAX.		CONC. (C.Y.)	REINF. (LB.)
				NO.	LENGTH	NO.	LENGTH	NO.	LENGTH	NO.	LENGTH		
4'	3'	9"	4'-3"	18	5'-9"	18	6'-8"	4	5'-7"	8	18'-3"	2.8	270
4'	4'	10"	4'-4"	22	5'-9"	22	6'-9"	4	5'-8"	8	21'-9"	3.3	320
5'	3'	9"	4'-3"	19	5'-9"	19	6'-8"	4	5'-7"	8	19'-3"	3.0	280
5'	4'	10"	4'-4"	23	5'-9"	23	6'-9"	4	5'-8"	8	22'-9"	3.5	330
5'	5'	10"	4'-4"	27	5'-9"	27	6'-9"	4	5'-8"	8	26'-4"	4.0	390
6'	3'	9"	4'-3"	20	5'-9"	20	6'-8"	4	5'-7"	8	20'-3"	3.1	290
6'	4'	10"	4'-4"	24	5'-9"	24	6'-9"	4	5'-8"	8	23'-9"	3.6	350
6'	5'	10"	4'-4"	28	5'-9"	28	6'-9"	4	5'-8"	8	27'-4"	4.1	400
6'	6'	11"	4'-5"	30	5'-9"	30	6'-10"	4	5'-9"	8	31'-0"	4.7	440
7'	3'	9"	4'-3"	21	5'-9"	21	6'-8"	4	5'-7"	8	21'-3"	3.2	310
7'	4'	10"	4'-4"	25	5'-9"	25	6'-9"	4	5'-8"	8	24'-9"	3.8	360
7'	5'	10"	4'-4"	29	5'-9"	29	6'-9"	4	5'-8"	8	28'-4"	4.3	410
7'	6'	11"	4'-5"	31	5'-9"	31	6'-10"	4	5'-9"	8	32'-0"	4.8	450
7'	7'	11"	4'-5"	35	5'-9"	35	6'-10"	4	5'-9"	8	35'-7"	5.4	500
8'	3'	9"	4'-3"	22	5'-9"	22	6'-8"	4	5'-7"	8	22'-3"	3.4	320
8'	4'	10"	4'-4"	26	5'-9"	26	6'-9"	4	5'-8"	8	25'-9"	3.9	370
8'	5'	10"	4'-4"	30	5'-9"	30	6'-9"	4	5'-8"	8	29'-4"	4.4	430
8'	6'	11"	4'-5"	32	5'-9"	32	6'-10"	4	5'-9"	8	33'-0"	5.0	470
8'	7'	11"	4'-5"	36	5'-9"	36	6'-10"	4	5'-9"	8	36'-7"	5.5	520
8'	8'	12"	4'-6"	40	5'-9"	40	6'-11"	4	5'-10"	8	40'-0"	6.0	570
9'	3'	9"	4'-3"	23	5'-9"	23	6'-8"	4	5'-7"	8	23'-9"	3.6	340
9'	4'	10"	4'-4"	27	5'-9"	27	6'-9"	4	5'-8"	8	27'-3"	4.1	390
9'	5'	10"	4'-4"	31	5'-9"	31	6'-9"	4	5'-8"	8	30'-8"	4.6	440
9'	6'	11"	4'-5"	33	5'-9"	33	6'-10"	4	5'-9"	8	34'-2"	5.2	480
9'	7'	11"	4'-5"	37	5'-9"	37	6'-10"	4	5'-9"	8	37'-7"	5.7	530
9'	8'	12"	4'-6"	41	5'-9"	41	6'-11"	4	5'-10"	8	41'-2"	6.2	590
9'	9'	13"	4'-7"	45	5'-9"	45	7'-0"	4	5'-11"	8	44'-8"	6.7	640
10'	3'	9"	4'-3"	24	5'-9"	24	6'-8"	4	5'-7"	8	24'-9"	3.8	350
10'	4'	10"	4'-4"	28	5'-9"	28	6'-9"	4	5'-8"	8	28'-3"	4.3	400
10'	5'	10"	4'-4"	32	5'-9"	32	6'-9"	4	5'-8"	8	31'-8"	4.8	460
10'	6'	11"	4'-5"	34	5'-9"	34	6'-10"	4	5'-9"	8	35'-2"	5.3	490
10'	7'	11"	4'-5"	38	5'-9"	38	6'-10"	4	5'-9"	8	38'-7"	5.8	550
10'	8'	12"	4'-6"	42	5'-9"	42	6'-11"	4	5'-10"	8	42'-2"	6.3	600
10'	9'	13"	4'-7"	46	5'-9"	46	7'-0"	4	5'-11"	8	45'-8"	6.9	660
10'	10'	13"	4'-7"	48	5'-9"	48	7'-0"	4	5'-11"	8	49'-2"	7.4	690
11'	3'	9"	4'-3"	25	5'-9"	25	6'-8"	4	5'-7"	8	25'-9"	3.9	360
11'	4'	10"	4'-4"	29	5'-9"	29	6'-9"	4	5'-8"	8	29'-3"	4.4	420
11'	5'	10"	4'-4"	33	5'-9"	33	6'-9"	4	5'-8"	8	32'-8"	4.9	470
11'	6'	11"	4'-5"	35	5'-9"	35	6'-10"	4	5'-9"	8	36'-4"	5.5	510
11'	7'	11"	4'-5"	39	5'-9"	39	6'-10"	4	5'-9"	8	39'-9"	6.0	560
11'	8'	12"	4'-6"	43	5'-9"	43	6'-11"	4	5'-10"	8	43'-2"	6.5	620
11'	9'	13"	4'-7"	47	5'-9"	47	7'-0"	4	5'-11"	8	46'-10"	7.0	670
11'	10'	13"	4'-7"	49	5'-9"	49	7'-0"	4	5'-11"	8	50'-4"	7.6	710
11'	11'	14"	4'-8"	53	5'-9"	53	7'-1"	4	6'-0"	8	53'-10"	8.1	760
12'	5'	10"	4'-4"	34	5'-9"	34	6'-9"	4	5'-8"	8	33'-8"	5.1	480
12'	6'	11"	4'-5"	36	5'-9"	36	6'-10"	4	5'-9"	8	37'-4"	5.6	520
12'	7'	11"	4'-5"	40	5'-9"	40	6'-10"	4	5'-9"	8	40'-9"	6.1	570
12'	8'	12"	4'-6"	44	5'-9"	44	6'-11"	4	5'-10"	8	44'-2"	6.6	630
12'	9'	13"	4'-7"	48	5'-9"	48	7'-0"	4	5'-11"	8	47'-10"	7.2	690
12'	10'	13"	4'-7"	50	5'-9"	50	7'-0"	4	5'-11"	8	51'-4"	7.7	720
12'	11'	14"	4'-8"	54	5'-9"	54	7'-1"	4	6'-0"	8	54'-10"	8.2	780
12'	12'	14"	4'-8"	58	5'-9"	58	7'-1"	4	6'-0"	8	58'-3"	8.7	830



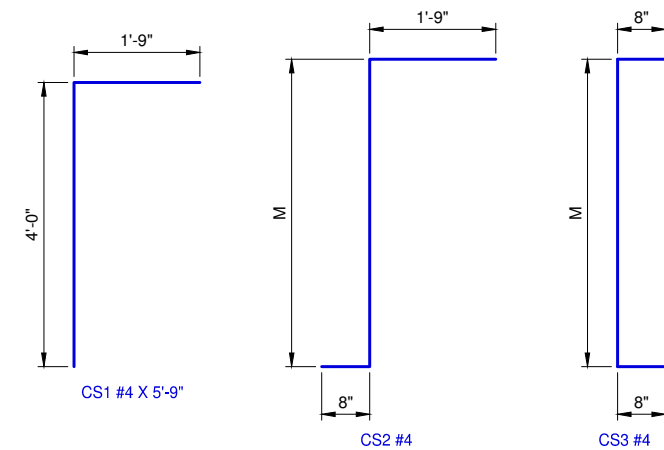
TYPICAL SECTION THRU CURTAIN WALL



TYPICAL SECTION THRU END OF CURTAIN WALL

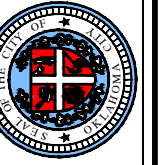


CURTAIN WALL / APRON PLAN



REVISION NO.
DATE

The City of
Oklahoma City
Public Works Department
Engineering Division



APPROVED BY: DATE: 6/22/2023
ERIC J. WENGER, P.E.
CITY ENGINEER

THESE STANDARD DRAWINGS AND ASSOCIATED CALCULATIONS HAVE BEEN PREPARED BY CEC CORPORATION UNDER CONTRACT WITH THE CITY OF OKLAHOMA CITY.

R.C.B. CULVERTS - CURTAIN WALL DETAILS
SINGLE CELL - 4'-0" DEPTH - 0° SKEW

Drawing Number
RCB-037