

APPROVED BY: DATE: 6/22/2023
ERIC J. WENGER, P.E.
CITY ENGINEER

THESE STANDARD DRAWINGS AND ASSOCIATED CALCULATIONS HAVE BEEN PREPARED BY CEC CORPORATION UNDER CONTRACT WITH THE CITY OF OKLAHOMA CITY.

R.C.B. CULVERTS - END SECTION DETAILS
DOUBLE CELL - 10' HEIGHT - 0° SKEW
SHEET NO. 1 OF 2

Drawing Number
RCB-054

APRON AND HEADWALL BAR LIST

MARK	SIZE	FORM	10' SPAN			11' SPAN			12' SPAN		
			NO.	LENGTH	LENGTH VARIATION	NO.	LENGTH	LENGTH VARIATION	NO.	LENGTH	LENGTH VARIATION
ABD1	#4	STR.	48	4'-3"		52	4'-3"		56	4'-3"	
ABD2	#4	BNT.	4	5'-0"		4	5'-0"		4	5'-0"	
AD	#4	STR.	4	37'-6"		4	37'-6"		4	37'-6"	
AL1	#4	STR.	48	33'-7"		52	33'-7"		56	33'-7"	
AL2	#4	STR.	72	16'-11" AVG.	2'-3" TO 31'-7"	72	16'-11" AVG.	2'-3" TO 31'-7"	72	16'-11" AVG.	2'-3" TO 31'-7"
AT1	#4	STR.	4	62'-10"		4	64'-10"		4	66'-10"	
AT2	#4	STR.				2	63'-8" AVG.	63'-1" TO 64'-3"	4	64'-6" AVG.	62'-9" TO 66'-3"
AT3	#5	STR.				2	63'-8" AVG.	63'-1" TO 64'-3"	4	64'-6" AVG.	62'-9" TO 66'-3"
AT4	#4	STR.	33	41'-2" AVG.	22'-8" TO 59'-8"	31	42'-0" AVG.	24'-8" TO 59'-4"	29	42'-10" AVG.	26'-8" TO 59'-0"
AT5	#5	STR.	33	41'-2" AVG.	22'-8" TO 59'-8"	31	42'-0" AVG.	24'-8" TO 59'-4"	29	42'-10" AVG.	26'-8" TO 59'-0"
CH	#4	STR.	4	22'-8"		4	24'-8"		4	26'-8"	
CL1	#4	BNT.	26	4'-4"		28	4'-4"		30	4'-4"	
CL2	#4	BNT.	26	4'-4"		28	4'-4"		30	4'-4"	

- ① 4 SETS OF 18 BARS
- ② LENGTH INCLUDES 2'-6" LAP

QUANTITIES

ITEM	UNIT	10' SPAN	11' SPAN	12' SPAN
CLASS AA CONCRETE	C.Y.	78.6	81.5	84.2
REINFORCING STEEL	LB.	9,730	9,960	10,210
PIPE RAILING	L.F.	98	100	102

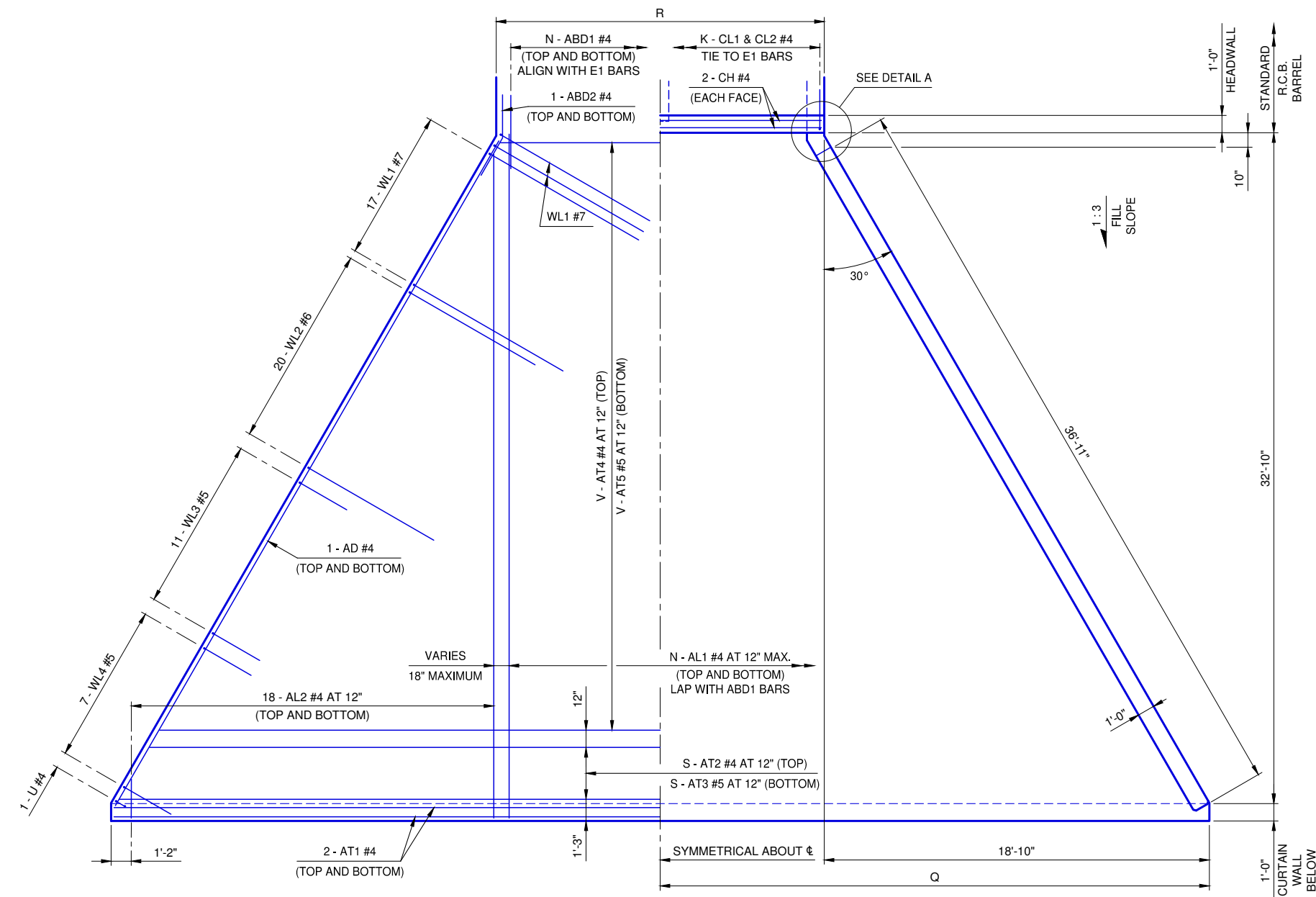
NOTE:
QUANTITIES ARE FOR ONE END SECTION WHICH INCLUDES ONE HEADWALL, ONE APRON AND TWO WINGWALLS. PIPE RAILING IS BASED ON PLAN DIMENSION AT CENTERLINE OF RAILING.

APRON VARIABLES

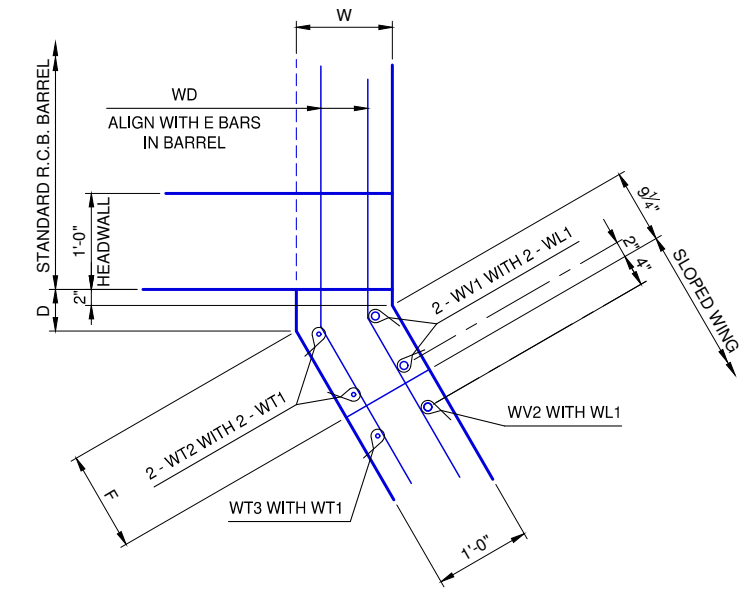
SPAN	DIMENSIONS		NUMBER OF BARS			
	R	Q	K	N	S	V
10'	23'-0"	30'-4"	26	24		33
11'	25'-0"	31'-4"	28	26	2	31
12'	27'-0"	32'-4"	30	28	4	29

WINGWALL DIMENSIONS

SPAN	W	D	F
10'	12"	5 3/16"	1'-0 7/16"
11'	12"	5 3/16"	1'-0 7/16"
12'	12"	5 3/16"	1'-0 7/16"

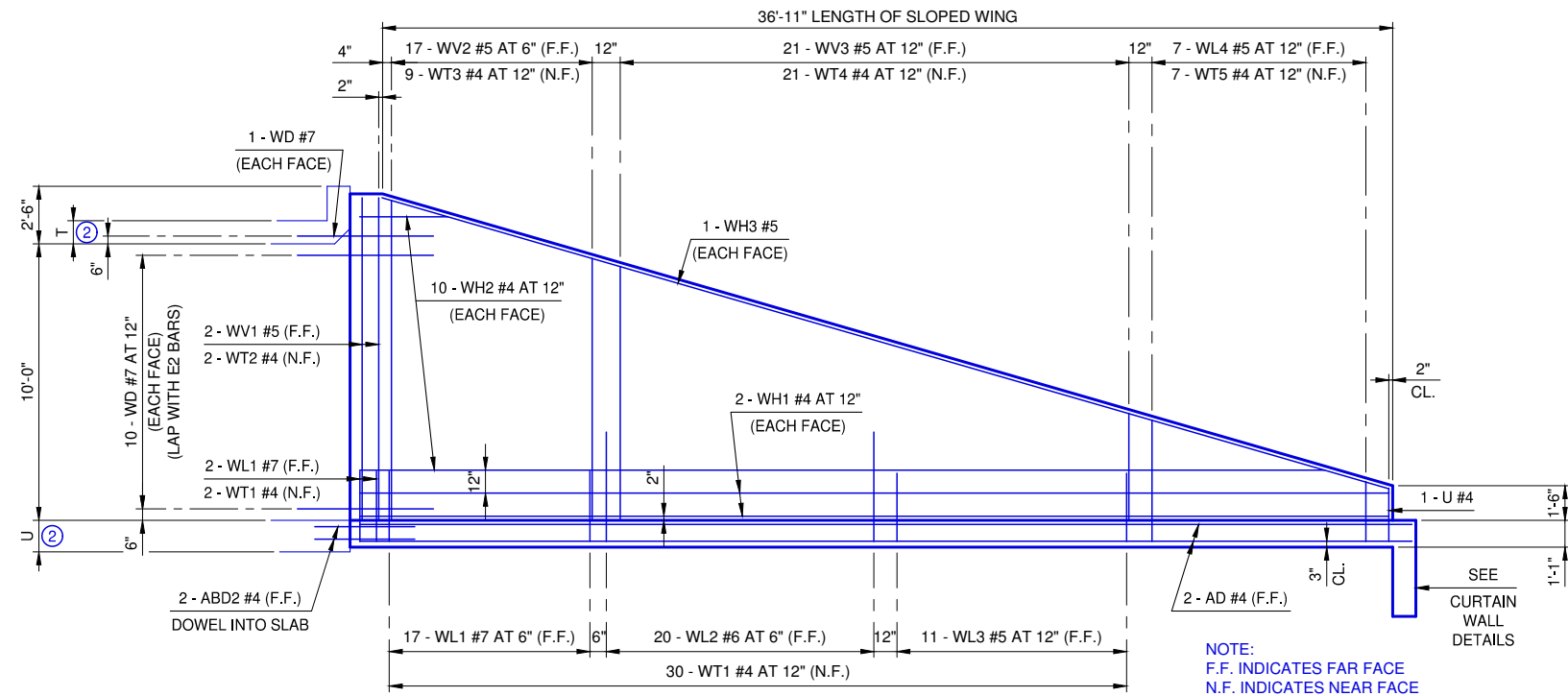


APRON PLAN



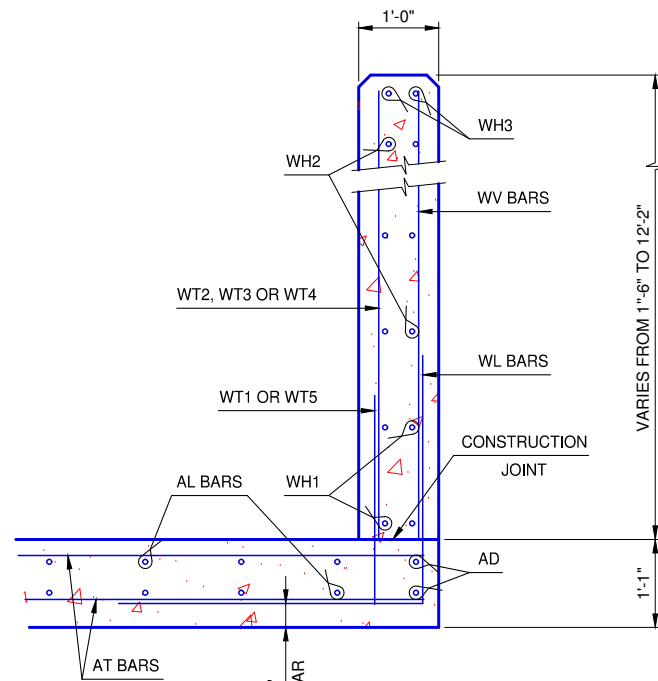
DETAIL A

REVISION NO.
DATE

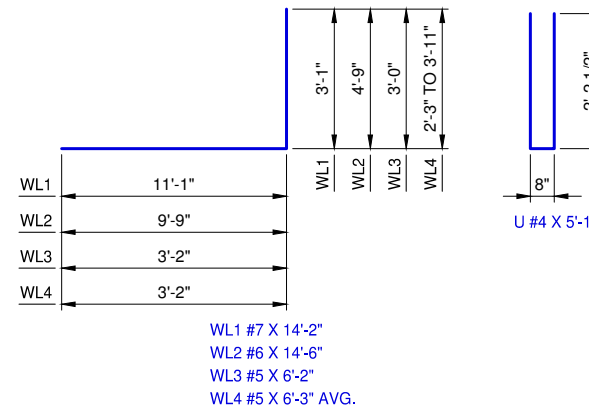


WINGWALL ELEVATION

SEE STD. RCB-015 PipeRailing FOR DETAILS OF RAIL REQUIRED ON TOP OF HEADWALL AND WINGS



TYPICAL SECTION THRU WING



ADJUSTMENT IN NUMBER OF BARREL BARS IN END SECTION

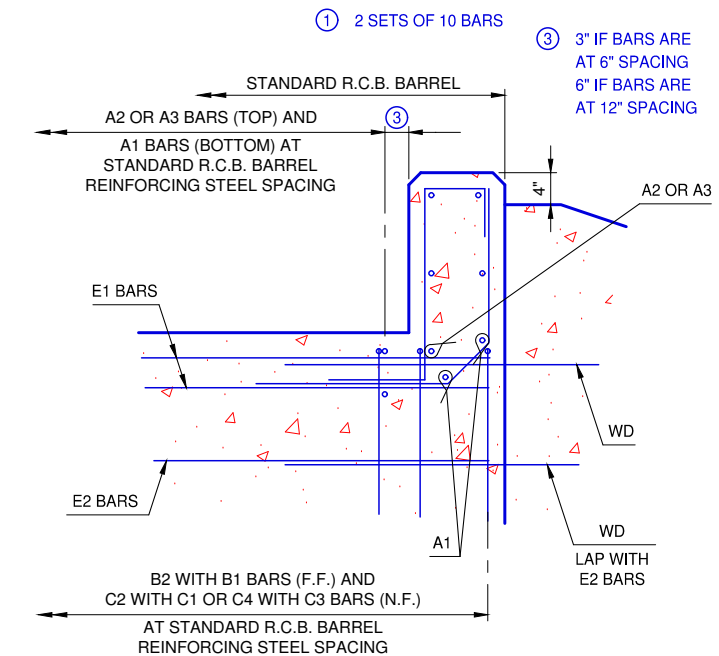
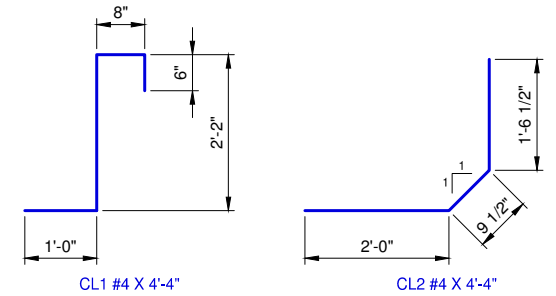
SPAN	BAR MARKS								
	A1	A2	A3	B1	B2	C1	C2	C3	C4
10'						-2	-2	+2	+2
11'						-2	-2	+2	+2
12'						-2	-2	+2	+2

NOTE: TO CONSTRUCT ONE END SECTION AS SHOWN, THE NUMBER OF BARS SHOWN NEED TO BE ADDED TO OR SUBTRACTED FROM THE TOTAL WEIGHT OF REINFORCING FOR THE BARREL. THIS WEIGHT ADJUSTMENT IS INCLUDED IN THE END SECTION QUANTITY. SEE BARREL DETAILS FOR BAR LENGTHS, SIZES AND BENDS.

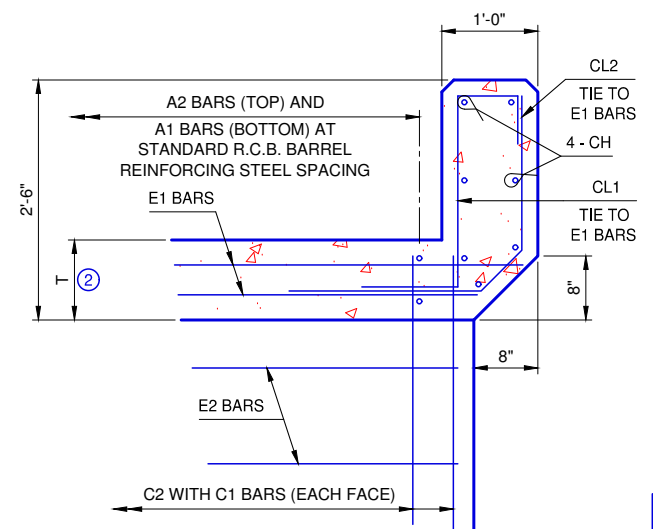
WINGWALL BAR LIST
ONE WINGWALL SHOWN, TWO REQUIRED

MARK	SIZE	NO.	FORM	LENGTH	LENGTH VARIATION
WD	#7	22	BNT.	6'-8"	
WH1	#4	4	STR.	37'-9"	
WH2	#4	20	STR.	19'-4" AVG.	3'-9" TO 34'-11"
WH3	#5	2	STR.	38'-3"	
WL1	#7	19	BNT.	14'-2"	
WL2	#6	20	BNT.	14'-6"	
WL3	#5	11	BNT.	6'-2"	
WL4	#5	7	BNT.	6'-3" AVG.	5'-5" TO 7'-1"
WT1	#4	32	STR.	2'-6"	
WT2	#4	2	STR.	12'-0"	
WT3	#4	9	STR.	10'-8" AVG.	9'-6" TO 11'-10"
WT4	#4	21	STR.	6'-4" AVG.	3'-5" TO 9'-3"
WT5	#4	7	STR.	3'-1" AVG.	2'-3" TO 3'-11"
WV1	#5	2	STR.	12'-0"	
WV2	#5	17	STR.	10'-8" AVG.	9'-6" TO 11'-10"
WV3	#5	21	STR.	6'-4" AVG.	3'-5" TO 9'-3"
U	#4	1	BNT.	5'-1"	

② FOR T AND U DIMENSIONS, SEE BARREL DETAILS



HEADWALL DETAIL AT EXTERIOR WALL



HEADWALL DETAIL AT INTERIOR WALL

REVISION NO.
DATE

APPROVED BY: DATE: 6/22/2023
ERIC J. WENGER, P.E.
CITY ENGINEER

THESE STANDARD DRAWINGS AND ASSOCIATED CALCULATIONS HAVE BEEN PREPARED BY CEC CORPORATION UNDER CONTRACT WITH THE CITY OF OKLAHOMA CITY.

R.C.B. CULVERTS - END SECTION DETAILS
DOUBLE CELL - 10' HEIGHT - 0° SKEW

Drawing Number
RCB-055