

APRON AND HEADWALL BAR LIST

MARK	SIZE	FORM	12' SPAN		
			NO.	LENGTH	LENGTH VARIATION
ABD1	#4	STR.	56	4'-3"	
ABD2	#4	BNT.	4	5'-0"	
AD	#4	STR.	4	44'-5"	
AL1	#4	STR.	56	39'-7"	
AL2	#4	STR.	88	20'-4" AVG.	2'-3" TO 38'-5"
AT1	#4	STR.	4	73'-9"	
AT2	#4	STR.	10	67'-11" AVG.	62'-9" TO 73'-1"
AT3	#5	STR.	10	67'-11" AVG.	62'-9" TO 73'-1"
AT4	#4	STR.	29	42'-10" AVG.	26'-8" TO 59'-0"
AT5	#5	STR.	29	42'-10" AVG.	26'-8" TO 59'-0"
CH	#4	STR.	4	26'-8"	
CL1	#4	BNT.	30	4'-4"	
CL2	#4	BNT.	30	4'-4"	

- ①
- ②
- ③
- ④

- ① 4 SETS OF 22 BARS
- ② LENGTH INCLUDES 2'-6" LAP

NOTE:
 QUANTITIES ARE FOR ONE END SECTION WHICH INCLUDES ONE HEADWALL, ONE APRON AND TWO WINGWALLS. PIPE RAILING IS BASED ON PLAN DIMENSION AT CENTERLINE OF RAILING.

QUANTITIES

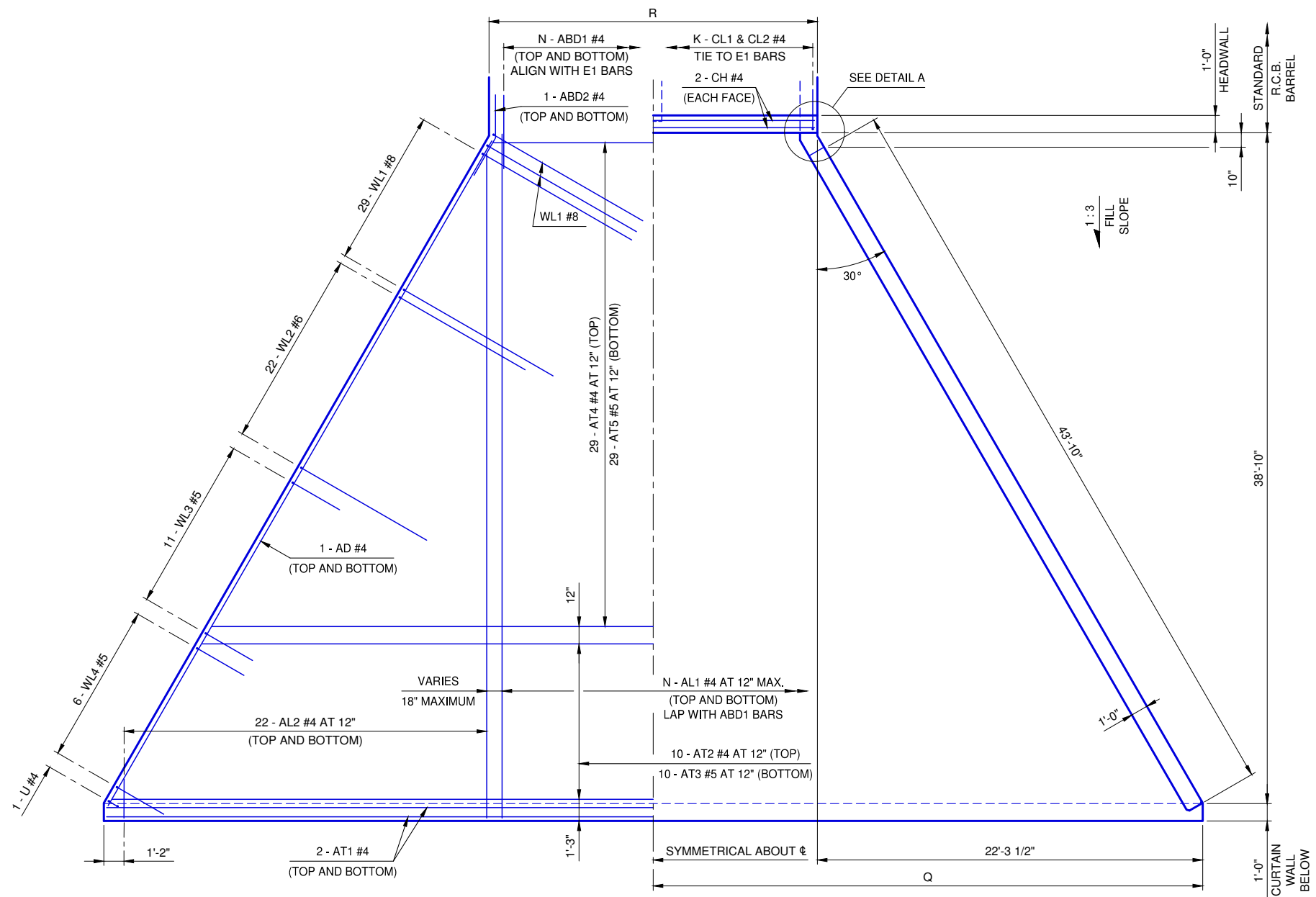
ITEM	UNIT	12' SPAN
CLASS AA CONCRETE	C.Y.	113.9
REINFORCING STEEL	LB.	14,590
PIPE RAILING	L.F.	116

APRON VARIABLES

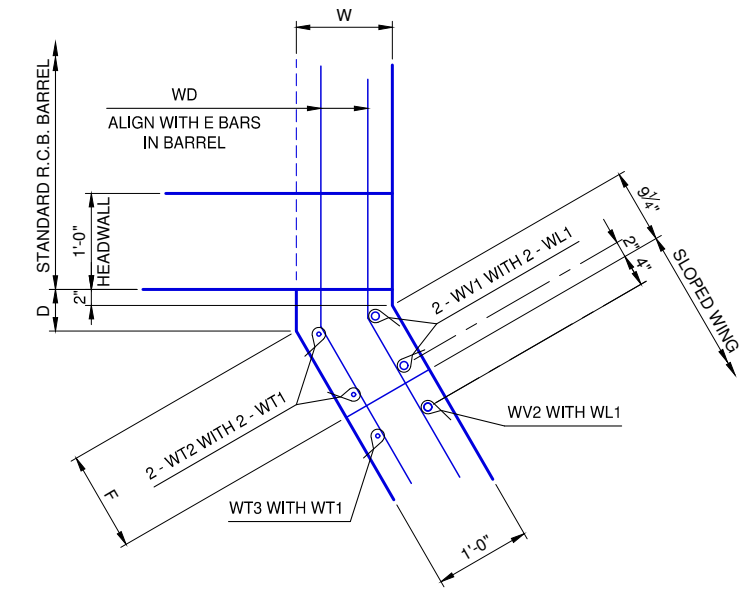
SPAN	DIMENSIONS		NO. OF BARS	
	R	Q	K	N
12'	27'-0"	35'-9 1/2"	30	28

WINGWALL DIMENSIONS

SPAN	W	D	F
12'	12"	5 3/16"	1'-0 7/16"



APRON PLAN



DETAIL A

REVISION NO.
DATE

APPROVED BY:  DATE: 6/22/2023
 ERIC J. WENGER, P.E.
 CITY ENGINEER

THESE STANDARD DRAWINGS AND ASSOCIATED CALCULATIONS HAVE BEEN PREPARED BY CEC CORPORATION UNDER CONTRACT WITH THE CITY OF OKLAHOMA CITY.

R.C.B. CULVERTS - END SECTION DETAILS
DOUBLE CELL - 12' HEIGHT - 0° SKEW
 SHEET NO. 1 OF 2

Drawing Number
 RCB-058

The City of
Oklaoma City
 Public Works Department
 Engineering Division

