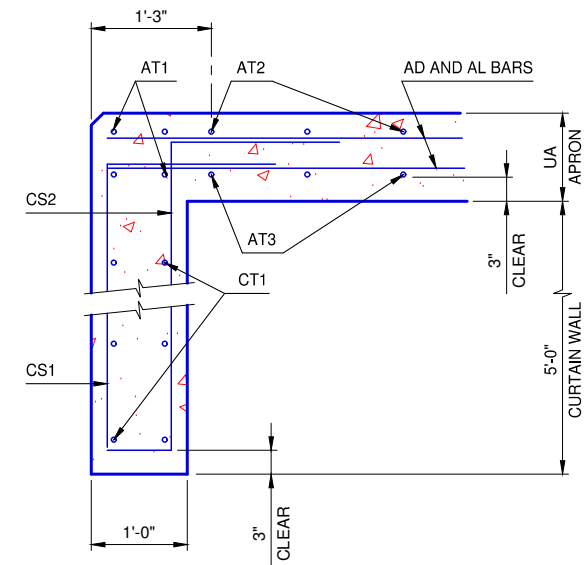
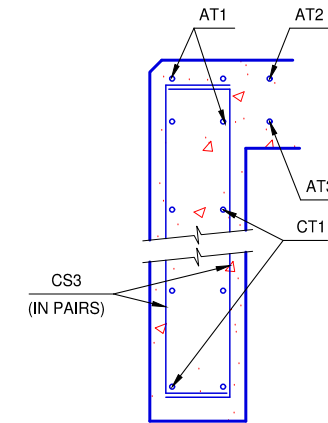


DIMENSIONS				REINFORCING STEEL								QUANTITIES	
CELL SPAN	CELL HEIGHT	UA	M	CS1 - #5		CS2 - #5		CS3 - #5		CT1 - #4 AT 12" MAX.		CONC. (C.Y.)	REINF. (LB.)
				NO.	LENGTH	NO.	LENGTH	NO.	LENGTH	NO.	LENGTH		
4'	3'	9"	5'-3"	30	6'-9"	30	7'-8"	4	6'-7"	10	28'-5"	5.4	670
4'	4'	10"	5'-4"	34	6'-9"	34	7'-9"	4	6'-8"	10	31'-11"	6.0	760
5'	3'	9"	5'-3"	33	6'-9"	33	7'-8"	4	6'-7"	10	31'-5"	5.9	740
5'	4'	10"	5'-4"	37	6'-9"	37	7'-9"	4	6'-8"	10	34'-11"	6.6	830
5'	5'	10"	5'-4"	41	6'-9"	41	7'-9"	4	6'-8"	10	38'-4"	7.2	910
6'	3'	9"	5'-3"	36	6'-9"	36	7'-8"	4	6'-7"	10	34'-5"	6.5	800
6'	4'	10"	5'-4"	40	6'-9"	40	7'-9"	4	6'-8"	10	37'-11"	7.1	890
6'	5'	10"	5'-4"	44	6'-9"	44	7'-9"	4	6'-8"	10	41'-4"	7.8	970
6'	6'	11"	5'-5"	46	6'-9"	46	7'-10"	4	6'-9"	10	44'-10"	8.4	1,030
7'	3'	9"	5'-3"	39	6'-9"	39	7'-8"	4	6'-7"	10	37'-5"	7.0	870
7'	4'	10"	5'-4"	43	6'-9"	43	7'-9"	4	6'-8"	10	40'-11"	7.7	960
7'	5'	10"	5'-4"	47	6'-9"	47	7'-9"	4	6'-8"	10	44'-4"	8.3	1,040
7'	6'	11"	5'-5"	49	6'-9"	49	7'-10"	4	6'-9"	10	47'-10"	9.0	1,100
7'	7'	11"	5'-5"	53	6'-9"	53	7'-10"	4	6'-9"	10	51'-3"	9.6	1,180
8'	3'	9"	5'-3"	42	6'-9"	42	7'-8"	4	6'-7"	10	40'-5"	7.6	930
8'	4'	10"	5'-4"	46	6'-9"	46	7'-9"	4	6'-8"	10	43'-11"	8.2	1,020
8'	5'	10"	5'-4"	50	6'-9"	50	7'-9"	4	6'-8"	10	47'-4"	8.9	1,110
8'	6'	11"	5'-5"	52	6'-9"	52	7'-10"	4	6'-9"	10	50'-10"	9.5	1,160
8'	7'	11"	5'-5"	56	6'-9"	56	7'-10"	4	6'-9"	10	54'-3"	10.2	1,250
8'	8'	12"	5'-6"	60	6'-9"	60	7'-11"	4	6'-10"	10	58'-0"	10.9	1,340
9'	3'	9"	5'-3"	45	6'-9"	45	7'-8"	4	6'-7"	10	43'-5"	8.2	1,000
9'	4'	10"	5'-4"	49	6'-9"	49	7'-9"	4	6'-8"	10	46'-11"	8.8	1,090
9'	5'	10"	5'-4"	53	6'-9"	53	7'-9"	4	6'-8"	10	50'-4"	9.4	1,170
9'	6'	11"	5'-5"	55	6'-9"	55	7'-10"	4	6'-9"	10	53'-10"	10.1	1,230
9'	7'	11"	5'-5"	59	6'-9"	59	7'-10"	4	6'-9"	10	57'-3"	10.7	1,310
9'	8'	12"	5'-6"	63	6'-9"	63	7'-11"	4	6'-10"	10	63'-6"	11.4	1,420
9'	9'	13"	5'-7"	67	6'-9"	67	8'-0"	4	6'-11"	10	67'-0"	12.1	1,510
10'	3'	9"	5'-3"	48	6'-9"	48	7'-8"	4	6'-7"	10	46'-5"	8.7	1,060
10'	4'	10"	5'-4"	52	6'-9"	52	7'-9"	4	6'-8"	10	49'-11"	9.4	1,150
10'	5'	10"	5'-4"	56	6'-9"	56	7'-9"	4	6'-8"	10	53'-4"	10.0	1,240
10'	6'	11"	5'-5"	58	6'-9"	58	7'-10"	4	6'-9"	10	56'-10"	10.6	1,300
10'	7'	11"	5'-5"	62	6'-9"	62	7'-10"	4	6'-9"	10	63'-1"	11.3	1,400
10'	8'	12"	5'-6"	66	6'-9"	66	7'-11"	4	6'-10"	10	66'-6"	12.0	1,490
10'	9'	13"	5'-7"	70	6'-9"	70	8'-0"	4	6'-11"	10	70'-0"	12.6	1,580
10'	10'	13"	5'-7"	72	6'-9"	72	8'-0"	4	6'-11"	10	73'-10"	13.3	1,630
11'	3'	9"	5'-3"	51	6'-9"	51	7'-8"	4	6'-7"	10	49'-5"	9.3	1,130
11'	4'	10"	5'-4"	55	6'-9"	55	7'-9"	4	6'-8"	10	52'-11"	9.9	1,220
11'	5'	10"	5'-4"	59	6'-9"	59	7'-9"	4	6'-8"	10	56'-4"	10.5	1,300
11'	6'	11"	5'-5"	61	6'-9"	61	7'-10"	4	6'-9"	10	62'-8"	11.3	1,380
11'	7'	11"	5'-5"	65	6'-9"	65	7'-10"	4	6'-9"	10	66'-1"	11.9	1,460
11'	8'	12"	5'-6"	69	6'-9"	69	7'-11"	4	6'-10"	10	69'-6"	12.5	1,550
11'	9'	13"	5'-7"	73	6'-9"	73	8'-0"	4	6'-11"	10	73'-0"	13.2	1,640
11'	10'	13"	5'-7"	75	6'-9"	75	8'-0"	4	6'-11"	10	76'-10"	13.9	1,700
11'	11'	14"	5'-8"	79	6'-9"	79	8'-1"	4	7'-0"	10	80'-4"	14.5	1,790
12'	5'	10"	5'-4"	62	6'-9"	62	7'-9"	4	6'-8"	10	59'-8"	11.2	1,370
12'	6'	11"	5'-5"	64	6'-9"	64	7'-10"	4	6'-9"	10	65'-8"	11.8	1,450
12'	7'	11"	5'-5"	68	6'-9"	68	7'-10"	4	6'-9"	10	69'-1"	12.4	1,530
12'	8'	12"	5'-6"	72	6'-9"	72	7'-11"	4	6'-10"	10	72'-10"	13.1	1,620
12'	9'	13"	5'-7"	76	6'-9"	76	8'-0"	4	6'-11"	10	76'-4"	13.8	1,710
12'	10'	13"	5'-7"	78	6'-9"	78	8'-0"	4	6'-11"	10	79'-10"	14.4	1,770
12'	11'	14"	5'-8"	82	6'-9"	82	8'-1"	4	7'-0"	10	83'-4"	15.1	1,860
12'	12'	14"	5'-8"	86	6'-9"	86	8'-1"	4	7'-0"	10	86'-9"	15.7	1,940

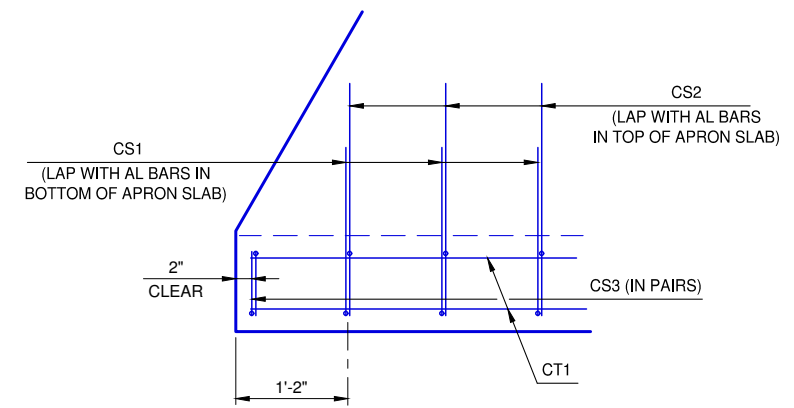
① LENGTH INCLUDES 2'-6" LAP



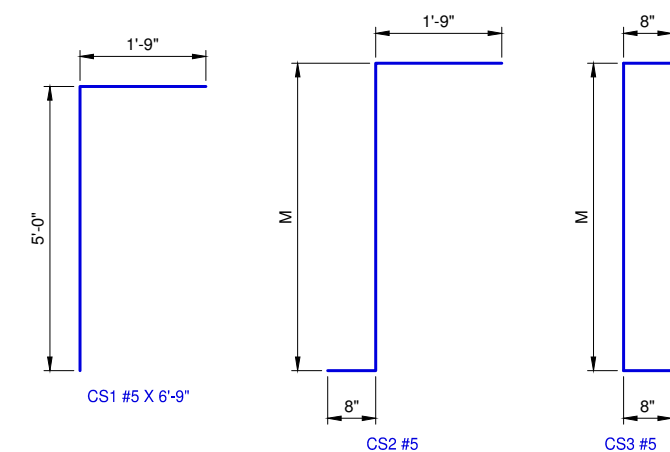
TYPICAL SECTION THRU CURTAIN WALL



TYPICAL SECTION THRU END OF CURTAIN WALL

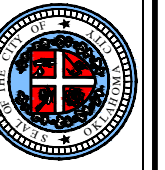


CURTAIN WALL / APRON PLAN



REVISION NO.  
DATE

The City of  
**Oklahoma City**  
Public Works Department  
Engineering Division



APPROVED BY: DATE: 6/22/2023  
ERIC J. WENGER, P.E.  
CITY ENGINEER  
THESE STANDARD DRAWINGS AND ASSOCIATED CALCULATIONS HAVE BEEN PREPARED BY CEC CORPORATION UNDER CONTRACT WITH THE CITY OF OKLAHOMA CITY.

**R.C.B. CULVERTS - CURTAIN WALL DETAILS**  
**TRIPLE CELL - 5'-0" DEPTH - 0° SKEW**

Drawing Number  
RCB-086