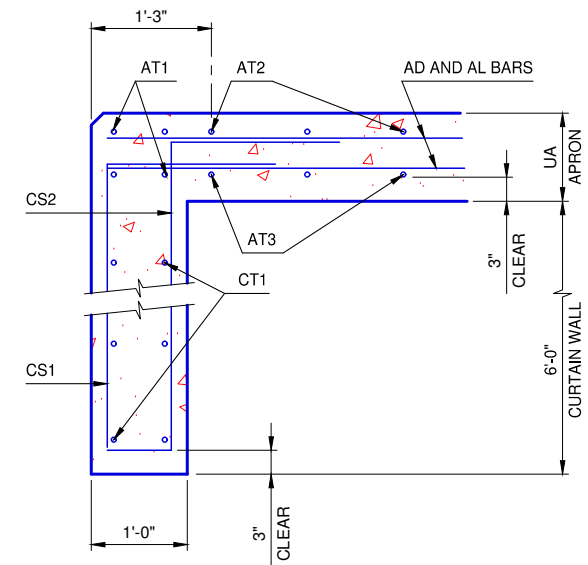
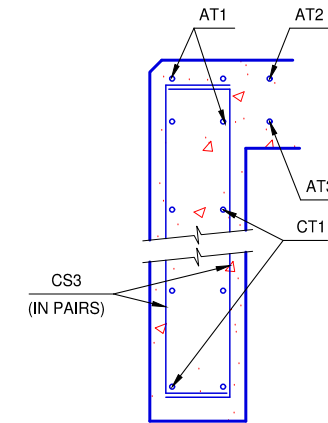


DIMENSIONS				REINFORCING STEEL								QUANTITIES	
CELL SPAN	CELL HEIGHT	UA	M	CS1 - #5		CS2 - #5		CS3 - #5		CT1 - #4 AT 12" MAX.		CONC. (C.Y.)	REINF. (LB.)
				NO.	LENGTH	NO.	LENGTH	NO.	LENGTH	NO.	LENGTH		
4'	3'	9"	6'-3"	59	7'-9"	59	8'-8"	4	7'-7"	12	28'-5"	6.4	1,270
4'	4'	10"	6'-4"	67	7'-9"	67	8'-9"	4	7'-8"	12	31'-11"	7.2	1,450
5'	3'	9"	6'-3"	65	7'-9"	65	8'-8"	4	7'-7"	12	31'-5"	7.1	1,400
5'	4'	10"	6'-4"	73	7'-9"	73	8'-9"	4	7'-8"	12	34'-11"	7.9	1,570
5'	5'	10"	6'-4"	81	7'-9"	81	8'-9"	4	7'-8"	12	38'-4"	8.6	1,740
6'	3'	9"	6'-3"	71	7'-9"	71	8'-8"	4	7'-7"	12	34'-5"	7.8	1,530
6'	4'	10"	6'-4"	79	7'-9"	79	8'-9"	4	7'-8"	12	37'-11"	8.5	1,700
6'	5'	10"	6'-4"	87	7'-9"	87	8'-9"	4	7'-8"	12	41'-4"	9.3	1,870
6'	6'	11"	6'-5"	91	7'-9"	91	8'-10"	4	7'-9"	12	44'-10"	10.1	1,970
7'	3'	9"	6'-3"	77	7'-9"	77	8'-8"	4	7'-7"	12	37'-5"	8.4	1,660
7'	4'	10"	6'-4"	85	7'-9"	85	8'-9"	4	7'-8"	12	40'-11"	9.2	1,830
7'	5'	10"	6'-4"	93	7'-9"	93	8'-9"	4	7'-8"	12	44'-4"	10.0	1,990
7'	6'	11"	6'-5"	97	7'-9"	97	8'-10"	4	7'-9"	12	47'-10"	10.8	2,100
7'	7'	11"	6'-5"	105	7'-9"	105	8'-10"	4	7'-9"	12	51'-3"	11.5	2,260
8'	3'	9"	6'-3"	83	7'-9"	83	8'-8"	4	7'-7"	12	40'-5"	9.1	1,780
8'	4'	10"	6'-4"	91	7'-9"	91	8'-9"	4	7'-8"	12	43'-11"	9.9	1,960
8'	5'	10"	6'-4"	99	7'-9"	99	8'-9"	4	7'-8"	12	47'-4"	10.6	2,120
8'	6'	11"	6'-5"	103	7'-9"	103	8'-10"	4	7'-9"	12	50'-10"	11.4	2,230
8'	7'	11"	6'-5"	111	7'-9"	111	8'-10"	4	7'-9"	12	54'-3"	12.2	2,390
8'	8'	12"	6'-6"	119	7'-9"	119	8'-11"	4	7'-10"	12	58'-0"	13.0	2,570
9'	3'	9"	6'-3"	89	7'-9"	89	8'-8"	4	7'-7"	12	43'-5"	9.8	1,910
9'	4'	10"	6'-4"	97	7'-9"	97	8'-9"	4	7'-8"	12	46'-11"	10.5	2,080
9'	5'	10"	6'-4"	105	7'-9"	105	8'-9"	4	7'-8"	12	50'-4"	11.3	2,250
9'	6'	11"	6'-5"	109	7'-9"	109	8'-10"	4	7'-9"	12	53'-10"	12.1	2,350
9'	7'	11"	6'-5"	117	7'-9"	117	8'-10"	4	7'-9"	12	57'-3"	12.8	2,520
9'	8'	12"	6'-6"	125	7'-9"	125	8'-11"	4	7'-10"	12	63'-6"	13.7	2,720
9'	9'	13"	6'-7"	133	7'-9"	133	9'-0"	4	7'-11"	12	67'-0"	14.5	2,900
10'	3'	9"	6'-3"	95	7'-9"	95	8'-8"	4	7'-7"	12	46'-5"	10.4	2,040
10'	4'	10"	6'-4"	103	7'-9"	103	8'-9"	4	7'-8"	12	49'-11"	11.2	2,210
10'	5'	10"	6'-4"	111	7'-9"	111	8'-9"	4	7'-8"	12	53'-4"	12.0	2,370
10'	6'	11"	6'-5"	115	7'-9"	115	8'-10"	4	7'-9"	12	56'-10"	12.8	2,480
10'	7'	11"	6'-5"	123	7'-9"	123	8'-10"	4	7'-9"	12	63'-1"	13.6	2,670
10'	8'	12"	6'-6"	131	7'-9"	131	8'-11"	4	7'-10"	12	66'-6"	14.3	2,850
10'	9'	13"	6'-7"	139	7'-9"	139	9'-0"	4	7'-11"	12	70'-0"	15.1	3,030
10'	10'	13"	6'-7"	143	7'-9"	143	9'-0"	4	7'-11"	12	73'-10"	16.0	3,130
11'	3'	9"	6'-3"	101	7'-9"	101	8'-8"	4	7'-7"	12	49'-5"	11.1	2,160
11'	4'	10"	6'-4"	109	7'-9"	109	8'-9"	4	7'-8"	12	52'-11"	11.9	2,340
11'	5'	10"	6'-4"	117	7'-9"	117	8'-9"	4	7'-8"	12	56'-4"	12.6	2,500
11'	6'	11"	6'-5"	121	7'-9"	121	8'-10"	4	7'-9"	12	62'-8"	13.5	2,630
11'	7'	11"	6'-5"	129	7'-9"	129	8'-10"	4	7'-9"	12	66'-1"	14.3	2,800
11'	8'	12"	6'-6"	137	7'-9"	137	8'-11"	4	7'-10"	12	69'-6"	15.0	2,980
11'	9'	13"	6'-7"	145	7'-9"	145	9'-0"	4	7'-11"	12	73'-0"	15.8	3,160
11'	10'	13"	6'-7"	149	7'-9"	149	9'-0"	4	7'-11"	12	76'-10"	16.6	3,260
11'	11'	14"	6'-8"	157	7'-9"	157	9'-1"	4	8'-0"	12	80'-4"	17.4	3,440
12'	5'	10"	6'-4"	123	7'-9"	123	8'-9"	4	7'-8"	12	59'-8"	13.4	2,630
12'	6'	11"	6'-5"	127	7'-9"	127	8'-10"	4	7'-9"	12	65'-8"	14.2	2,760
12'	7'	11"	6'-5"	135	7'-9"	135	8'-10"	4	7'-9"	12	69'-1"	14.9	2,930
12'	8'	12"	6'-6"	143	7'-9"	143	8'-11"	4	7'-10"	12	72'-10"	15.8	3,110
12'	9'	13"	6'-7"	151	7'-9"	151	9'-0"	4	7'-11"	12	76'-4"	16.5	3,290
12'	10'	13"	6'-7"	155	7'-9"	155	9'-0"	4	7'-11"	12	79'-10"	17.3	3,390
12'	11'	14"	6'-8"	163	7'-9"	163	9'-1"	4	8'-0"	12	83'-4"	18.1	3,570
12'	12'	14"	6'-8"	171	7'-9"	171	9'-1"	4	8'-0"	12	86'-9"	18.8	3,740

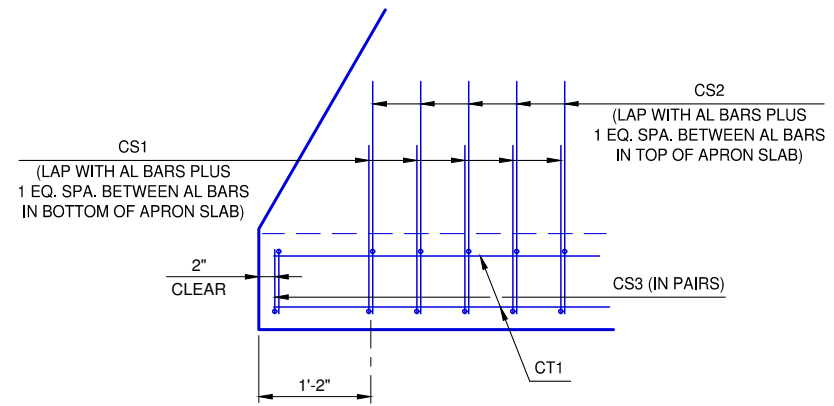
① LENGTH INCLUDES 2'-6" LAP



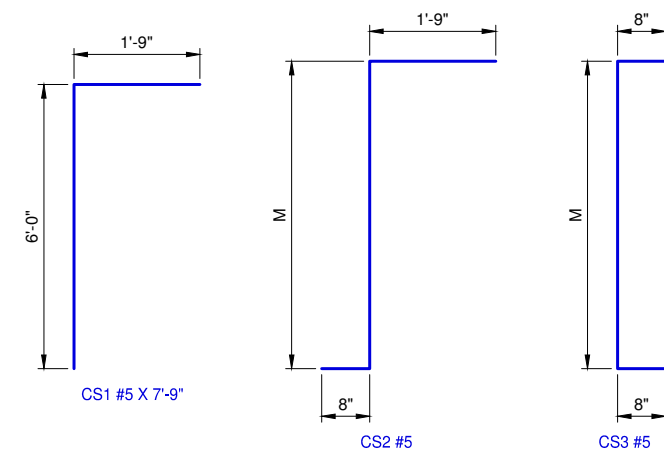
TYPICAL SECTION THRU CURTAIN WALL



TYPICAL SECTION THRU END OF CURTAIN WALL

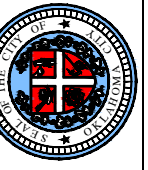


CURTAIN WALL / APRON PLAN



REVISION NO.
DATE

The City of
Oklahoma City
Public Works Department
Engineering Division



APPROVED BY: DATE: 6/22/2023
ERIC J. WENGER, P.E.
CITY ENGINEER
THESE STANDARD DRAWINGS AND ASSOCIATED CALCULATIONS HAVE BEEN PREPARED BY CEC CORPORATION UNDER CONTRACT WITH THE CITY OF OKLAHOMA CITY.

R.C.B. CULVERTS - CURTAIN WALL DETAILS
TRIPLE CELL - 6'-0" DEPTH - 0° SKEW

Drawing Number
RCB-087