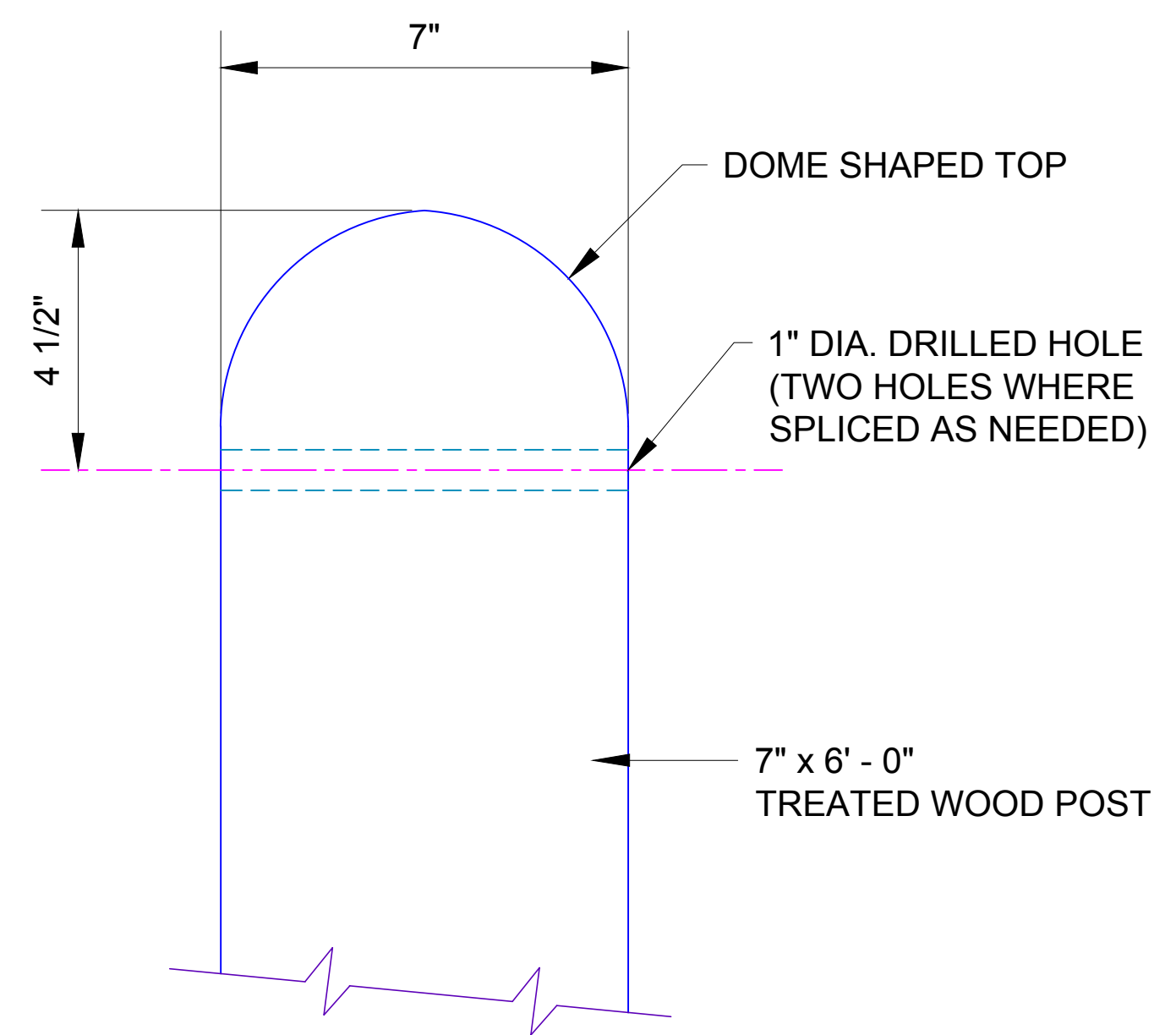
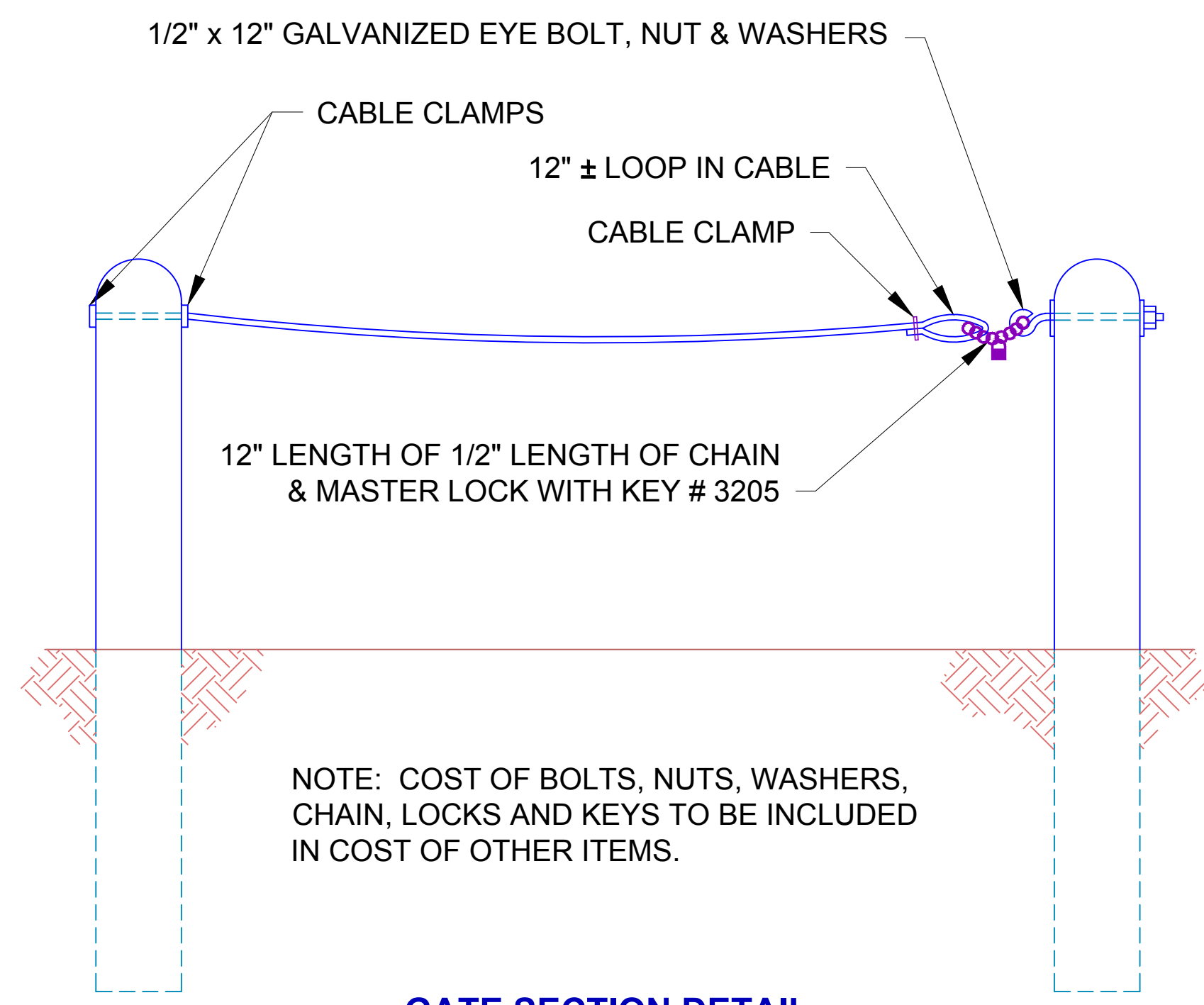


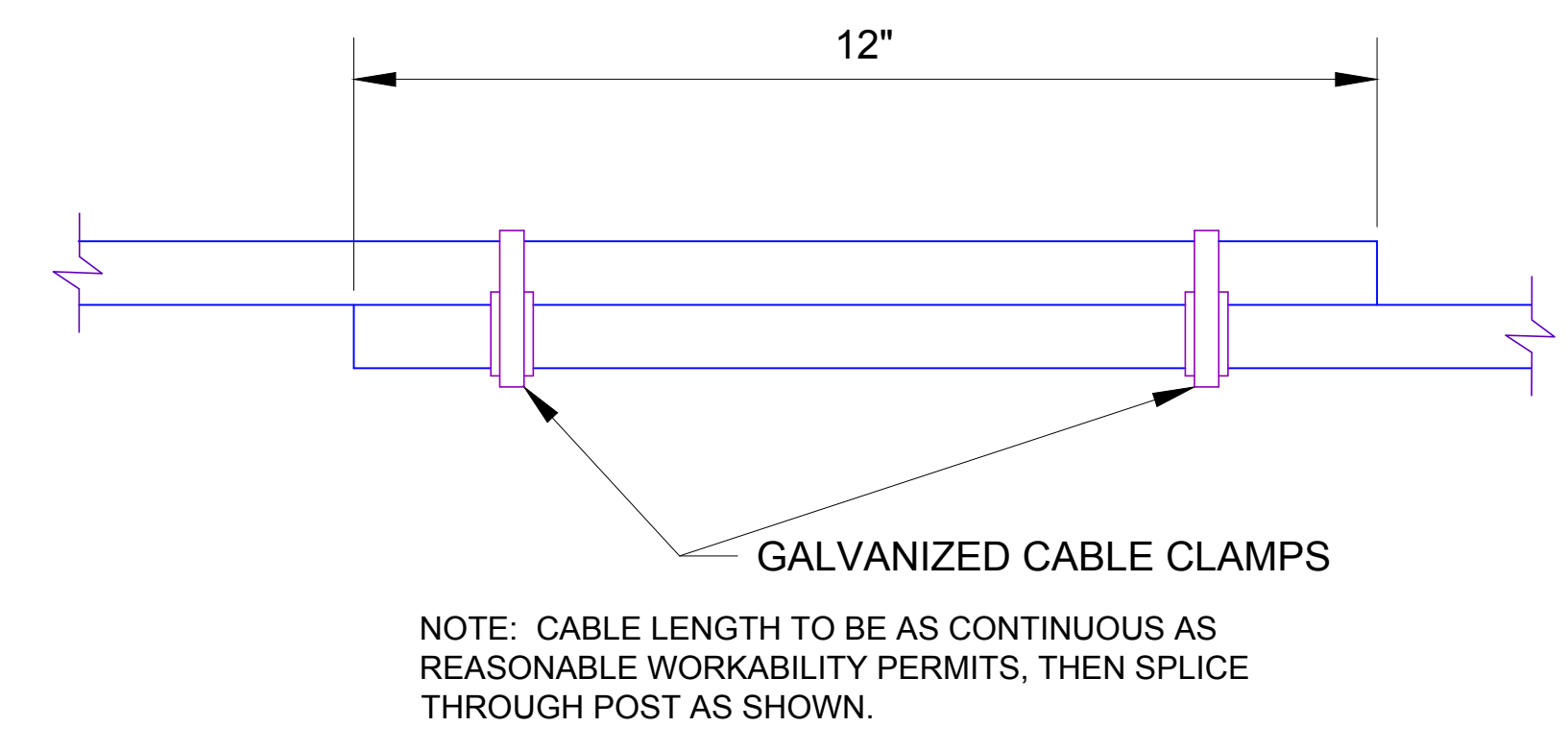
**ELEVATION**



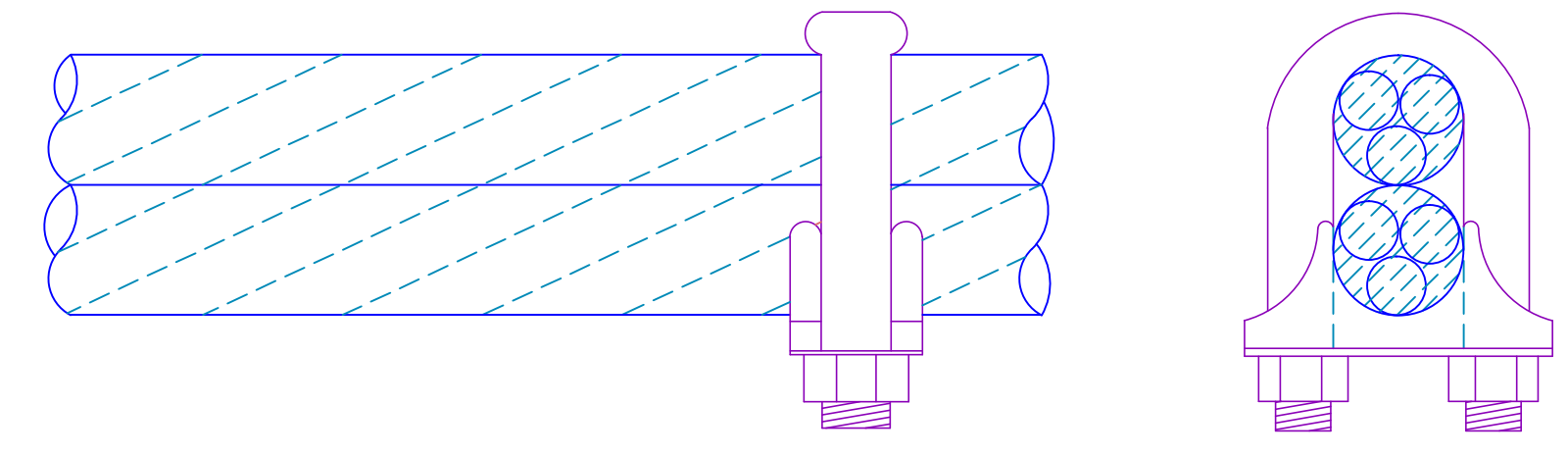
**WOOD POST**



**GATE SECTION DETAIL**



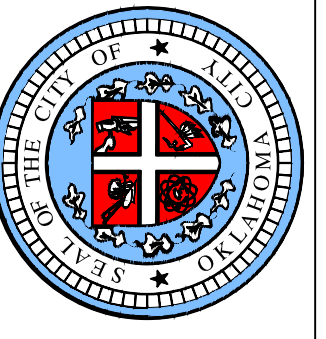
**CABLE SPLICE**



**TYPICAL GALVANIZED CABLE CLAMP**

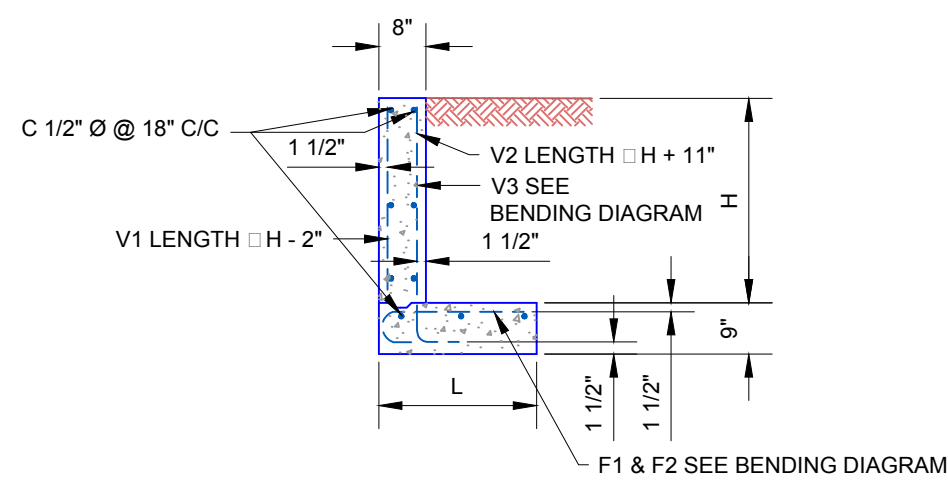
NOTE: COST OF BOLTS, NUTS, WASHERS, CHAIN, LOCKS AND KEYS TO BE INCLUDED IN COST OF OTHER ITEMS.

NOTE: CABLE LENGTH TO BE AS CONTINUOUS AS REASONABLE WORKABILITY PERMITS, THEN SPLICE THROUGH POST AS SHOWN.



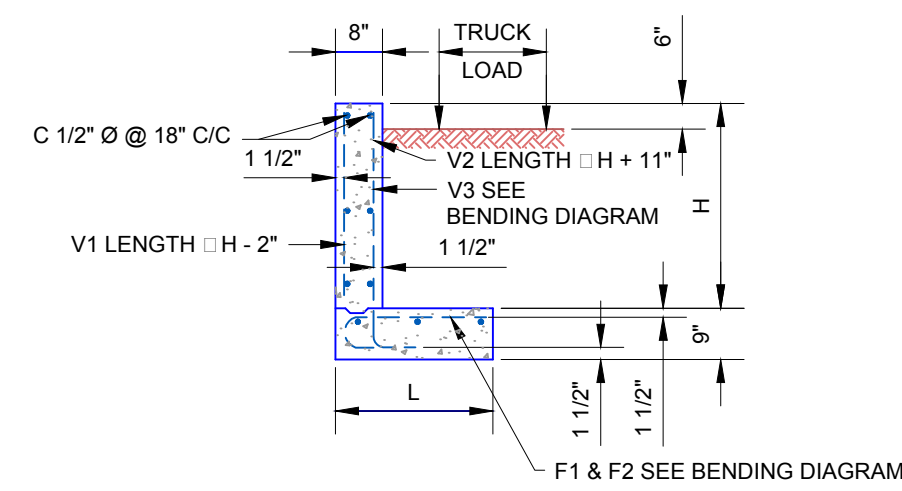
APPROVED BY: ERIC J. WENGER, P.E. CITY ENGINEER	DATE: 05-03-13
DRAWN: VSC	DATE: 05-03-13

**STANDARD CABLE FENCE  
DETAIL**



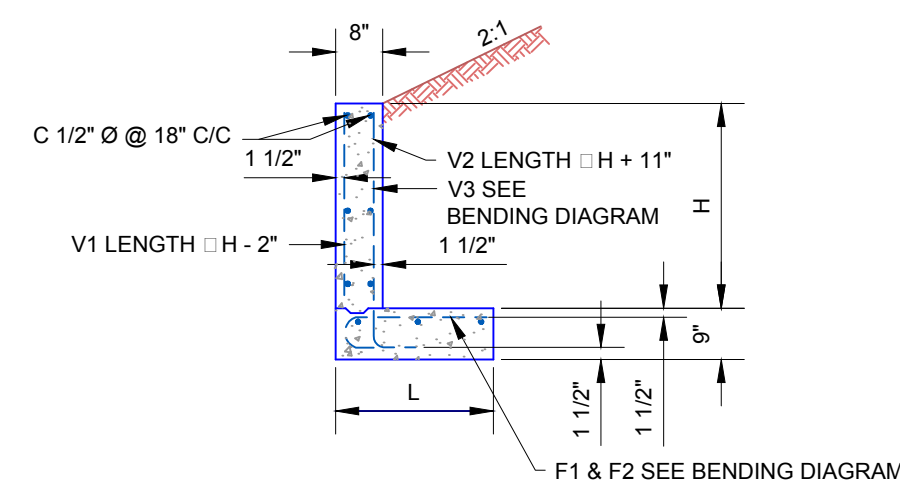
TYPE I A

DESIGN NUMBER	H	L	F1 BAR	F2 BAR	C BAR	V1 BAR	V2 BAR	V3 BAR	QUANTITIES	
			SIZE SPC.	SIZE SPC.	# REQ'D	SIZE SPC.	SIZE SPC.	SIZE SPC.	REINF STEEL LBS. PER L.F.	CONC. C.Y. PER L.F.
2	2'-0"	2'-0"	1/2" @ 12"	-----	6	1/2" @ 18"	1/2" @ 12"	-----	8.28	0.105
3	3'-0"	2'-7"	1/2" @ 12"	-----	8	1/2" @ 18"	1/2" @ 12"	-----	11.11	0.146
4	4'-0"	3'-3"	1/2" @ 12"	-----	9	1/2" @ 18"	1/2" @ 12"	-----	13.34	0.189
5	5'-0"	4'-0"	1/2" @ 12"	-----	10	5/8" @ 18"	1/2" @ 12"	-----	16.29	0.235
6	6'-0"	4'-8"	5/8" @ 12"	-----	11	1/2" @ 18"	1/2" @ 12"	-----	22.00	0.278
7	7'-0"	5'-0"	1/2" @ 12"	-----	14	7/8" @ 18"	1/2" @ 12"	1/2" @ 12"	27.76	0.321
8	8'-0"	6'-0"	7/8" @ 12"	-----	17	1/2" @ 18"	1/2" @ 12"	5/8" @ 12"	40.67	0.364
9	9'-0"	6'-8"	1/2" @ 12"	7/8" @ 12"	19	1/2" @ 18"	1/2" @ 12"	7/8" @ 12"	57.51	0.407



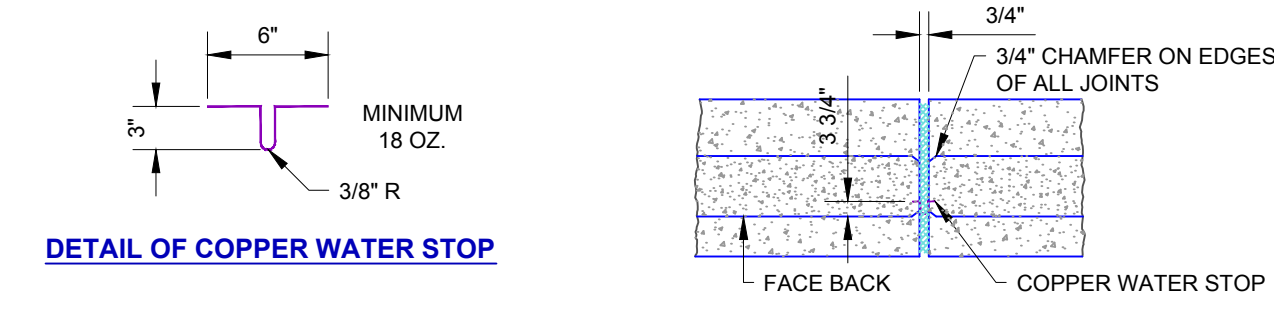
TYPE I B

DESIGN NUMBER	H	L	F1 BAR	F2 BAR	C BAR	V1 BAR	V2 BAR	V3 BAR	QUANTITIES	
			SIZE SPC.	SIZE SPC.	# REQ'D	SIZE SPC.	SIZE SPC.	SIZE SPC.	REINF STEEL LBS. PER L.F.	CONC. C.Y. PER L.F.
2	2'-0"	2'-0"	1/2" @ 12"	-----	6	1/2" @ 18"	1/2" @ 12"	-----	8.28	0.105
3	3'-0"	2'-10"	1/2" @ 12"	-----	9	1/2" @ 18"	1/2" @ 12"	-----	11.95	0.164
4	4'-0"	3'-7"	1/2" @ 12"	-----	9	1/2" @ 18"	1/2" @ 12"	-----	13.56	0.198
5	5'-0"	4'-4"	5/8" @ 12"	-----	12	5/8" @ 18"	1/2" @ 12"	-----	19.16	0.244
6	6'-0"	5'-1"	1/2" @ 12"	-----	14	1/2" @ 18"	1/2" @ 12"	1/2" @ 12"	25.64	0.298
7	7'-0"	5'-10"	7/8" @ 12"	-----	15	7/8" @ 18"	1/2" @ 12"	5/8" @ 12"	36.83	0.335
8	8'-0"	6'-7"	1/2" @ 12"	7/8" @ 12"	17	1/2" @ 18"	1/2" @ 12"	7/8" @ 12"	54.97	0.380



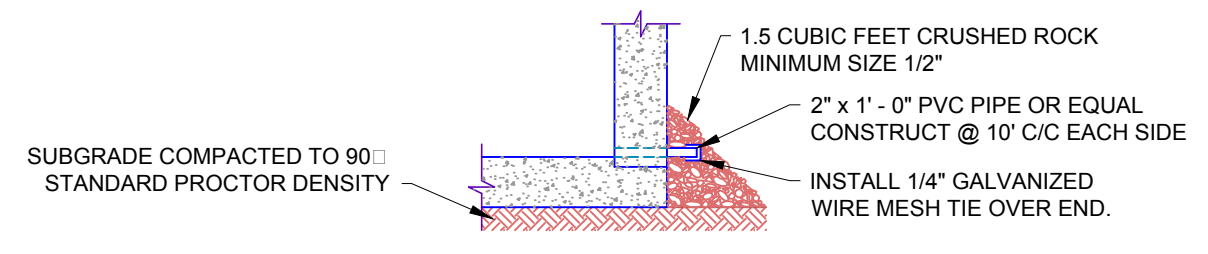
TYPE I C

DESIGN NUMBER	H	L	F1 BAR	F2 BAR	C BAR	V1 BAR	V2 BAR	V3 BAR	QUANTITIES	
			SIZE SPC.	SIZE SPC.	# REQ'D	SIZE SPC.	SIZE SPC.	SIZE SPC.	REINF STEEL LBS. PER L.F.	CONC. C.Y. PER L.F.
2	2'-0"	2'-0"	1/2" @ 12"	-----	6	1/2" @ 18"	1/2" @ 12"	-----	8.28	0.105
3	3'-0"	2'-7"	1/2" @ 12"	-----	8	1/2" @ 18"	1/2" @ 12"	-----	11.11	0.146
4	4'-0"	3'-4"	1/2" @ 12"	-----	9	1/2" @ 18"	1/2" @ 12"	-----	13.40	0.191
5	5'-0"	4'-1"	5/8" @ 12"	-----	12	1/2" @ 18"	1/2" @ 12"	-----	18.25	0.237
6	6'-0"	4'-11"	1/2" @ 12"	5/8" @ 12"	14	1/2" @ 18"	1/2" @ 12"	1/2" @ 12"	27.62	0.285
7	7'-0"	5'-8"	1/2" @ 12"	7/8" @ 12"	14	1/2" @ 18"	1/2" @ 12"	5/8" @ 12"	39.78	0.330

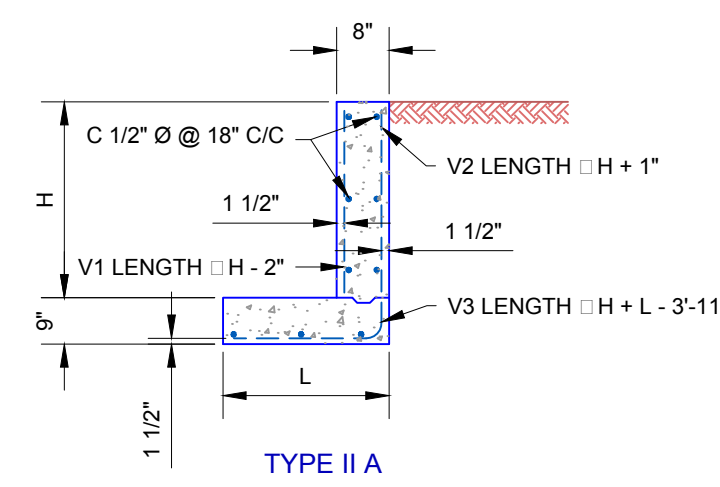


NOTE: COPPER WATER STOP SHALL BE INSTALLED FULL HEIGHT OF WALL IN ALL VERTICAL EXPANSION JOINTS. ALL COSTS INCLUDING PREMOLDED EXPANSION MATERIAL SHALL BE INCLUDED IN THE UNIT PRICE BID FOR RETAINING WALL.

DETAIL OF EXPANSION & CONSTRUCTION JOINT  
PLACE JOINTS @ 30' INTERVALS "MAXIMUM"

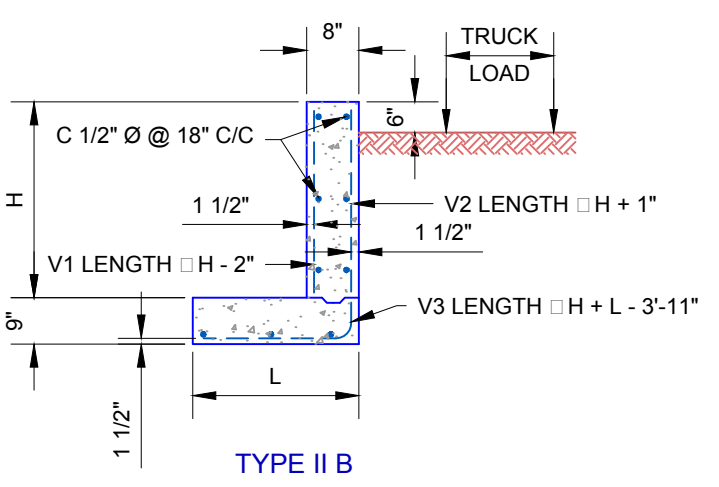


DETAIL OF WEEP HOLES & CONSTRUCTION JOINT  
INSTALL 1/4" GALVANIZED WIRE MESH TIE OVER END.



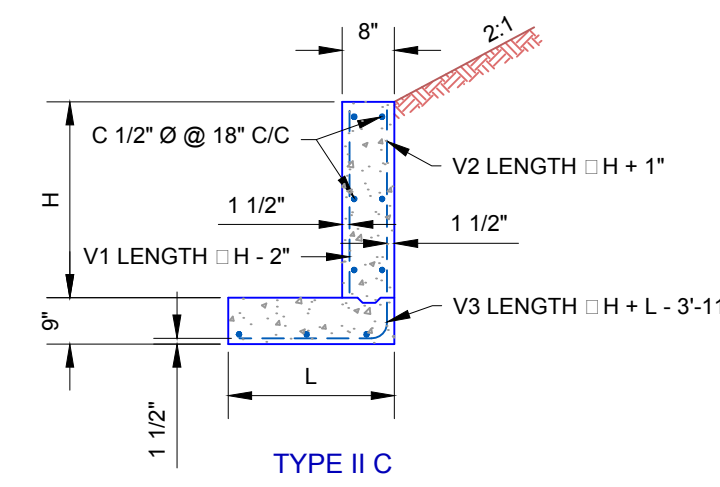
TYPE II A

DESIGN NUMBER	H	L	C BAR	V1 BAR	V2 BAR	V3 BAR	QUANTITIES	
			# REQ'D	SIZE SPC.	SIZE SPC.	SIZE SPC.	REINF STEEL LBS. PER L.F.	CONC. C.Y. PER L.F.
2	2'-0"	2'-0"	6	1/2" @ 18"	1/2" @ 12"	-----	7.55	0.105
3	3'-0"	2'-11"	8	1/2" @ 18"	1/2" @ 12"	-----	10.06	0.132
4	4'-0"	2'-11"	9	1/2" @ 18"	1/2" @ 12"	-----	12.40	0.180
5	5'-0"	3'-11"	11	1/2" @ 18"	1/2" @ 12"	-----	15.51	0.232
6	6'-0"	5'-1"	14	1/2" @ 18"	1/2" @ 12"	1/2" @ 12"	24.20	0.289
7	7'-0"	6'-5"	15	1/2" @ 18"	1/2" @ 12"	5/8" @ 12"	31.99	0.351
8	8'-0"	7'-10"	18	1/2" @ 18"	1/2" @ 12"	3/4" @ 12"	44.04	0.415



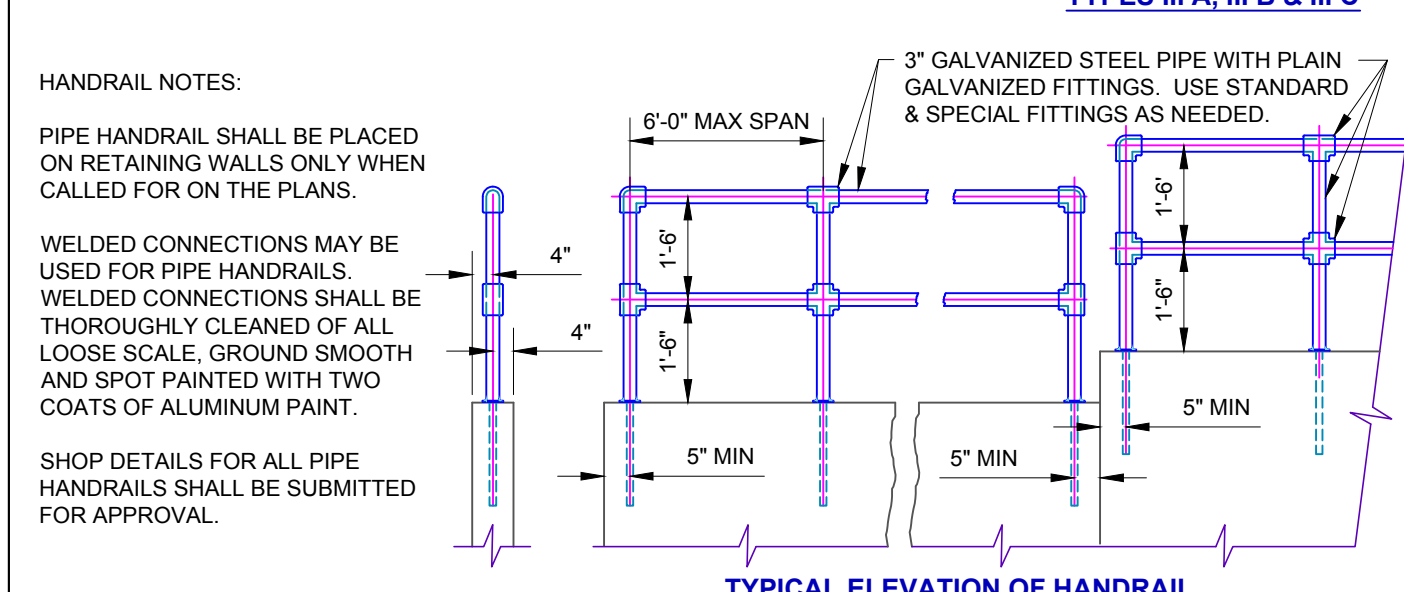
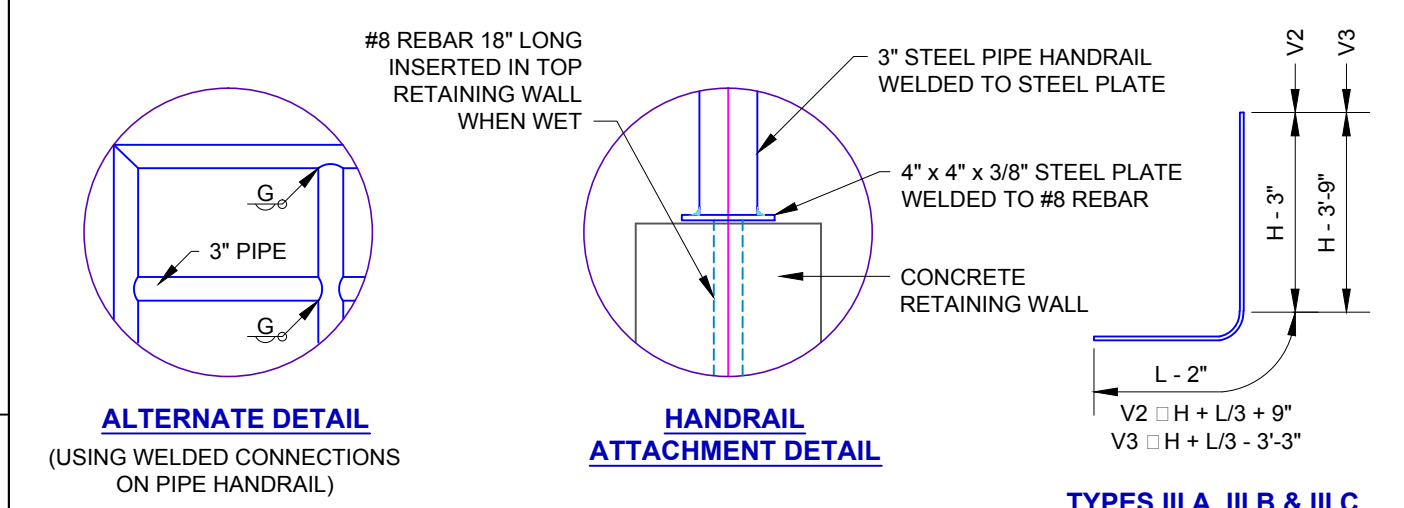
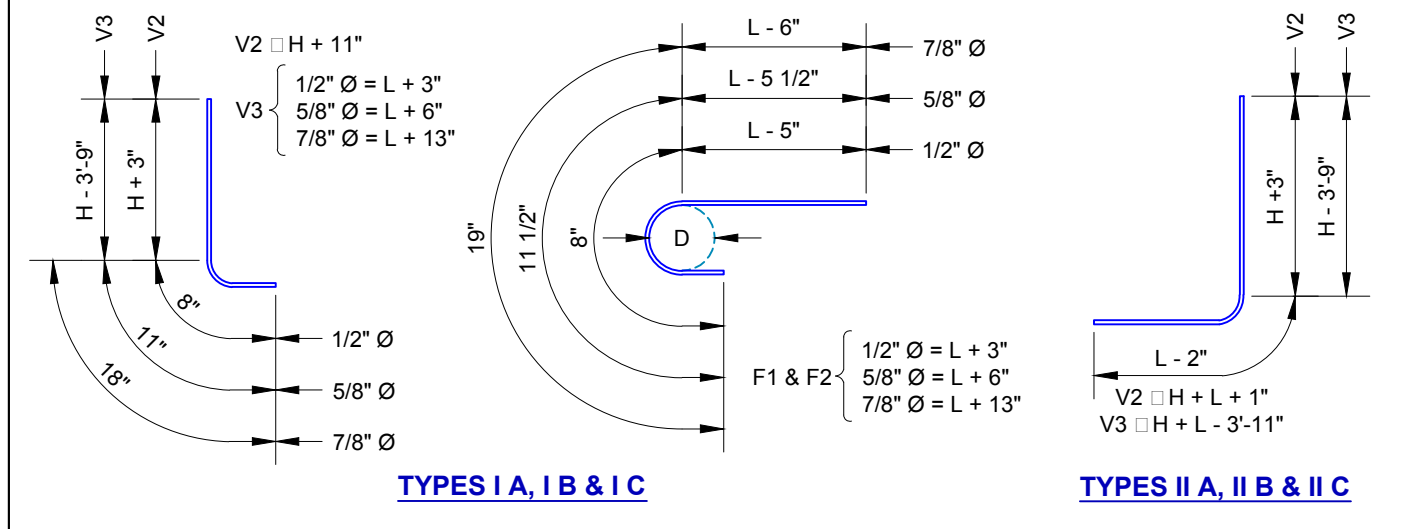
TYPE II B

DESIGN NUMBER	H	L	C BAR	V1 BAR	V2 BAR	V3 BAR	QUANTITIES	
			# REQ'D	SIZE SPC.	SIZE SPC.	SIZE SPC.	REINF STEEL LBS. PER L.F.	CONC. C.Y. PER L.F.
2	2'-0"	2'-2"	6	1/2" @ 18"	1/2" @ 12"	-----	7.66	0.110
3	3'-0"	3'-3"	9	1/2" @ 18"	1/2" @ 12"	-----	11.50	0.164
4	4'-0"	4'-5"	10	1/2" @ 18"	1/2" @ 12"	-----	14.07	0.221
5	5'-0"	5'-8"	12	1/2" @ 18"	1/2" @ 12"	1/2" @ 12"	21.86	0.280
6	6'-0"	7'-2"	15	1/2" @ 18"	1/2" @ 12"	5/8" @ 12"	31.12	0.347
7	7'-0"	8'-8"	16	1/2" @ 18"	1/2" @ 12"	7/8" @ 12"	41.90	0.414



TYPE II C

DESIGN NUMBER	H	L	C BAR	V1 BAR	V2 BAR	V3 BAR	QUANTITIES	
			# REQ'D	SIZE SPC.	SIZE SPC.	SIZE SPC.	REINF STEEL LBS. PER L.F.	CONC. C.Y. PER L.F.
2	2'-0"	2'-0"	6	1/2" @ 18"	1/2" @ 12"	-----	7.55	0.105
3	3'-0"	2'-7"	8	1/2" @ 18"	1/2" @ 12"	-----	10.39	0.148
4	4'-0"	3'-8"	9	1/2" @ 18"	1/2" @ 12"	-----	12.90	0.201
5	5'-0"	4'-11"	12	1/2" @ 18"	1/2" @ 12"	1/2" @ 12"	20.86	0.280
6	6'-0"	6'-4"	15	1/2" @ 18"	1/2" @ 12"	1/2" @ 12"	26.53	0.324
7	7'-0"	8'-0"	16	1/2" @ 18"	1/2" @ 12"	3/4" @ 12"	40.45	0.395



HANDRAIL NOTES:  
PIPE HANDRAIL SHALL BE PLACED ON RETAINING WALLS ONLY WHEN CALLED FOR ON THE PLANS.  
WELDED CONNECTIONS MAY BE USED FOR PIPE HANDRAILS.  
WELDED CONNECTIONS SHALL BE THOROUGHLY CLEANED OF ALL LOOSE SCALE, GROUND SMOOTH AND SPOT PAINTED WITH TWO COATS OF ALUMINUM PAINT.  
SHOP DETAILS FOR ALL PIPE HANDRAILS SHALL BE SUBMITTED FOR APPROVAL.

GENERAL NOTES:  
ALL CONSTRUCTION AND MATERIAL SHALL BE IN ACCORDANCE WITH THE OKLAHOMA CITY STANDARD SPECIFICATIONS  
ALL EXPOSED CONCRETE EDGES SHALL HAVE A 3/4" CHAMFER.  
ALL CONCRETE SHALL BE CLASS "A" CONCRETE 3500 PSI.  
EXPANSION JOINTS SHALL BE AT A MAXIMUM OF 30'-0" INTERVALS.  
ALL REINFORCING STEEL BARS SHALL BE DEFORMED BARS COLD BENT, NO WELDS PERMITTED.  
ALL EXPOSED CONCRETE SURFACES SHALL HAVE A CARBORUNDUM FINISH.  
THIS DETAIL ADAPTED FROM O.D.O.T RETAINING WALL RW-1.

APPROVED BY: DATE: 05-03-13  
CITY ENGINEER  
DRAWN: VSC  
DATE: 05-03-13