

- Parking**
1. Race Operations / Limited parking space
 2. Home 2 Suites – Pre-race packet pickup/approved parking
 3. Hampton Inn – Approved parking
 4. Holiday Inn – Approved parking
 5. Staybridge Suites – Approved parking
- Carpooling encouraged with limited parking.
 Parking for Hotels approved with hotel stay.
 Hotels have been notified of event and agreed to allow participant parking.



**Start
Finish**

VENDORS

**Race
Packets**

**Race
Operations**

**Water/
Refreshments**

**Water/
Refreshments**



**5 (2 handicap)
Porta-Pottys**

**Trash
Collection
Point**

EMSA

OKCPD

**Access Control
Point**

Road Block



 Thunderbirds indicate a water point / turn around point on the course.

- Race Director: Chris Nader, 405-531-6167
- Water point Coordinator: George Caves 405-323-1976
- Social Media Coordinator: Steve Josey 405-443-8975
- Website Manager: Steve Josey 405-443-8975



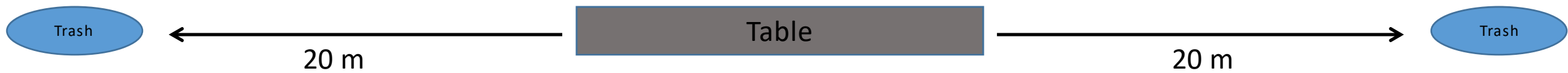
- 0 Manning x 4
- 0 Table
- 0 Trash Cans x 2
- 0 Trash Can Liners
- 0 Cups x 400
- 0 Water x 200
- 0 Cell Phone x 2
- 0 Vehicle
- 0 Route and Hospital Map
- 0 Race Director & Emergency Phone #s
- 0 Portable restroom

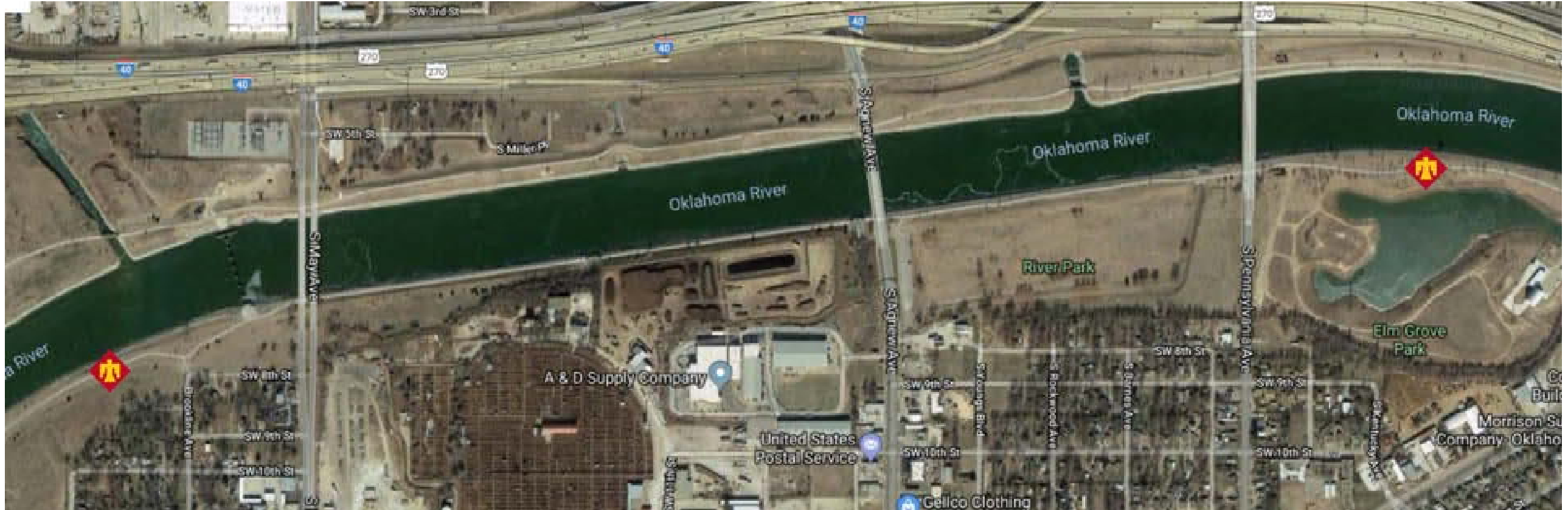
WATER POINT OPERATIONS
Mile Marker Banner



EMERGENCY ACTIONS

- *** Call 911**
- *** Inform dispatch that there're runners on the route**
- *** Call Race director**





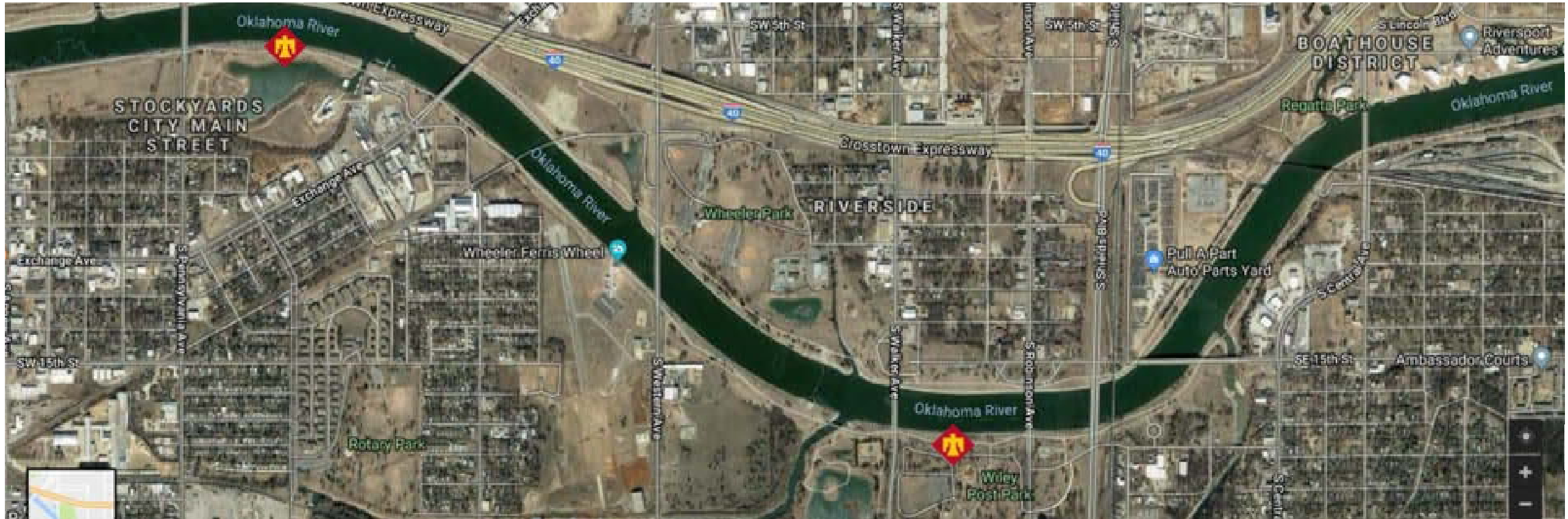
- 0 Manning x 4
- 0 Table
- 0 Trash Cans x 2
- 0 Trash Can Liners
- 0 Cups x 400
- 0 Water x 200
- 0 Cell Phone x 2
- 0 Vehicle
- 0 Route and Hospital Map
- 0 Race Director & Emergency Phone #s
- 0 Portable restroom

WATER POINT OPERATIONS
Mile Marker Banner



EMERGENCY ACTIONS
 *** Call 911
 *** Inform dispatch that there're runners on the route
 *** Call Race director





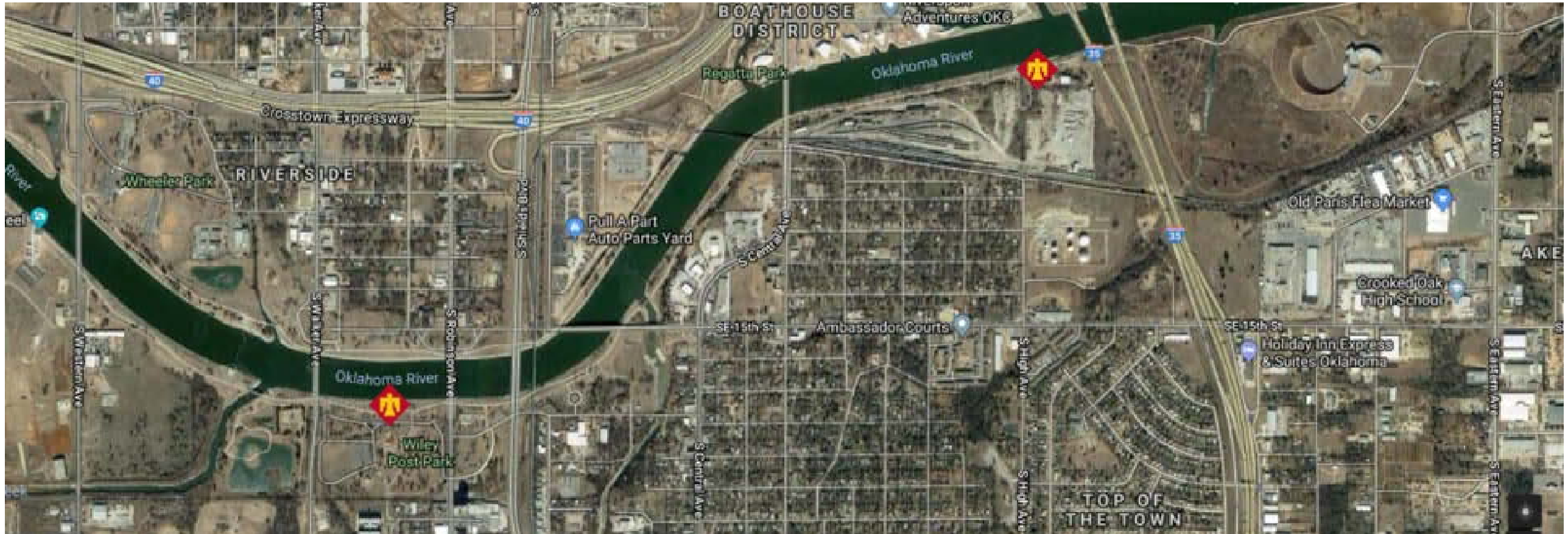
- 0 Manning x 4
- 0 Table
- 0 Trash Cans x 2
- 0 Trash Can Liners
- 0 Cups x 400
- 0 Water x 200
- 0 Cell Phone x 2
- 0 Vehicle
- 0 Route and Hospital Map
- 0 Race Director & Emergency Phone #s
- 0 Portable restroom

WATER POINT OPERATIONS
Mile Marker Banner



EMERGENCY ACTIONS
***** Call 911**
***** Inform dispatch that there're runners on the route**
***** Call Race director**





- 0 Manning x 4
- 0 Table
- 0 Trash Cans x 2
- 0 Trash Can Liners
- 0 Cups x 400
- 0 Water x 200
- 0 Cell Phone x 2
- 0 Vehicle
- 0 Route and Hospital Map
- 0 Race Director & Emergency Phone #s
- 0 Portable restroom

WATER POINT OPERATIONS
Mile Marker Banner



EMERGENCY ACTIONS

- *** Call 911**
- *** Inform dispatch that there're runners on the route**
- *** Call Race director**

