



Oklahoma City Vectorborne Disease Response: Zika and West Nile Virus

Oklahoma City-County Health
Department

Oklahoma City Emergency
Management



City's Approach to Mosquito borne Disease

- *Conduct personal protection messaging*
- *Conduct enhanced surveillance*
- *Apply larvicide to mosquito breeding locations*
- *Conduct mosquito habitat modification or removal*
- *Traveler Surveillance*
- *Local Transmission Response*
- *Coordination*



Risk Assessment: Oklahoma City

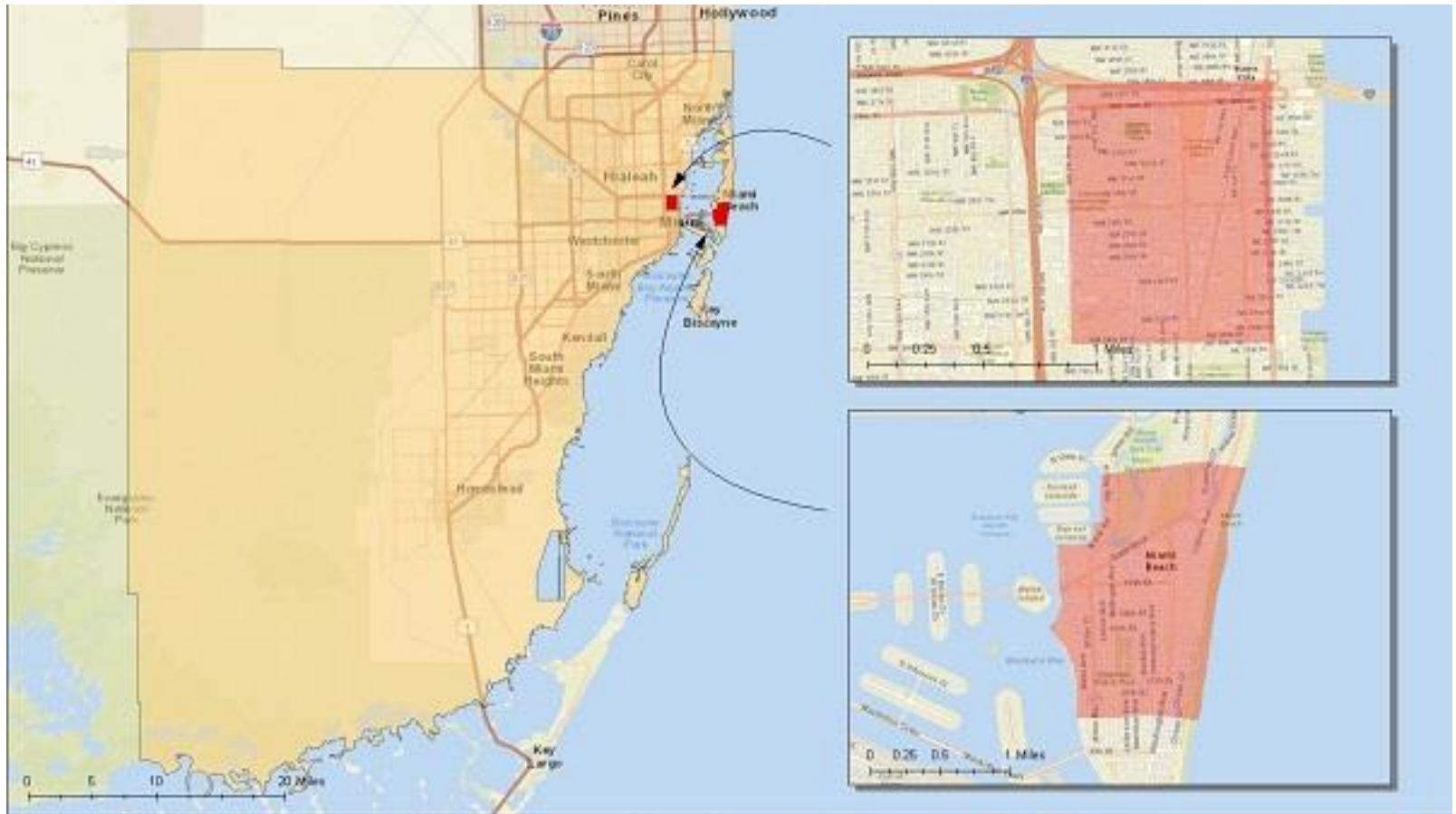
- 5 travel related cases in Oklahoma County; 0 pregnant
- Primary vector is *Aedes aegypti*; *Aedes albopictus* can also carry the virus
- 14,559 mosquitos trapped in Oklahoma City-County this season
 - 1,657 *Aedes* species
 - 1,267 identified as *Aedes albopictus*
 - 0 *Aedes aegypti* trapped

Global Zika Activity





Active Zika Transmission in United States





Zika Action Plan

Zika Risk Category	Definition
0	Preparedness- vector present or possible in the state
1	Mosquito Season (<i>Aedes aegypti</i> or <i>Aedes albopictus</i> mosquito-biting activity) Introduced travel-related, sexually, or other bodily fluid transmitted cases
2	Confirmed Local Transmission (single, locally acquired case, or cases clustered in a single household/community in a county or jurisdiction and occurring <2 weeks apart)
3	Confirmed Multi-person Local Transmission (Zika virus illnesses with onsets occurring at least 2 weeks apart but within an approximately 1 mile diameter)

- Phased response
- Based on available epidemiology, entomologic and environmental information, the geographic area for targeted Zika virus interventions will be identified.
- Vectorborne response workgroup includes State, Federal and local partners



Prevention Measures

- As of 9/7/16, 27 positive test pools
- Media Outreach
 - \$500,000 in free outdoor digital billboard exposure
 - Radio PSA rotation from 5 media (radio) distribution sites
 - Approx. \$5,000 for local TV, including 634 plays of prevention messaging
 - PSA used on Cox Cable
- Message: 3 D's and a P

