

OG&E LED Street Lighting OKC Technology Demonstration

January 3, 2017



Objective

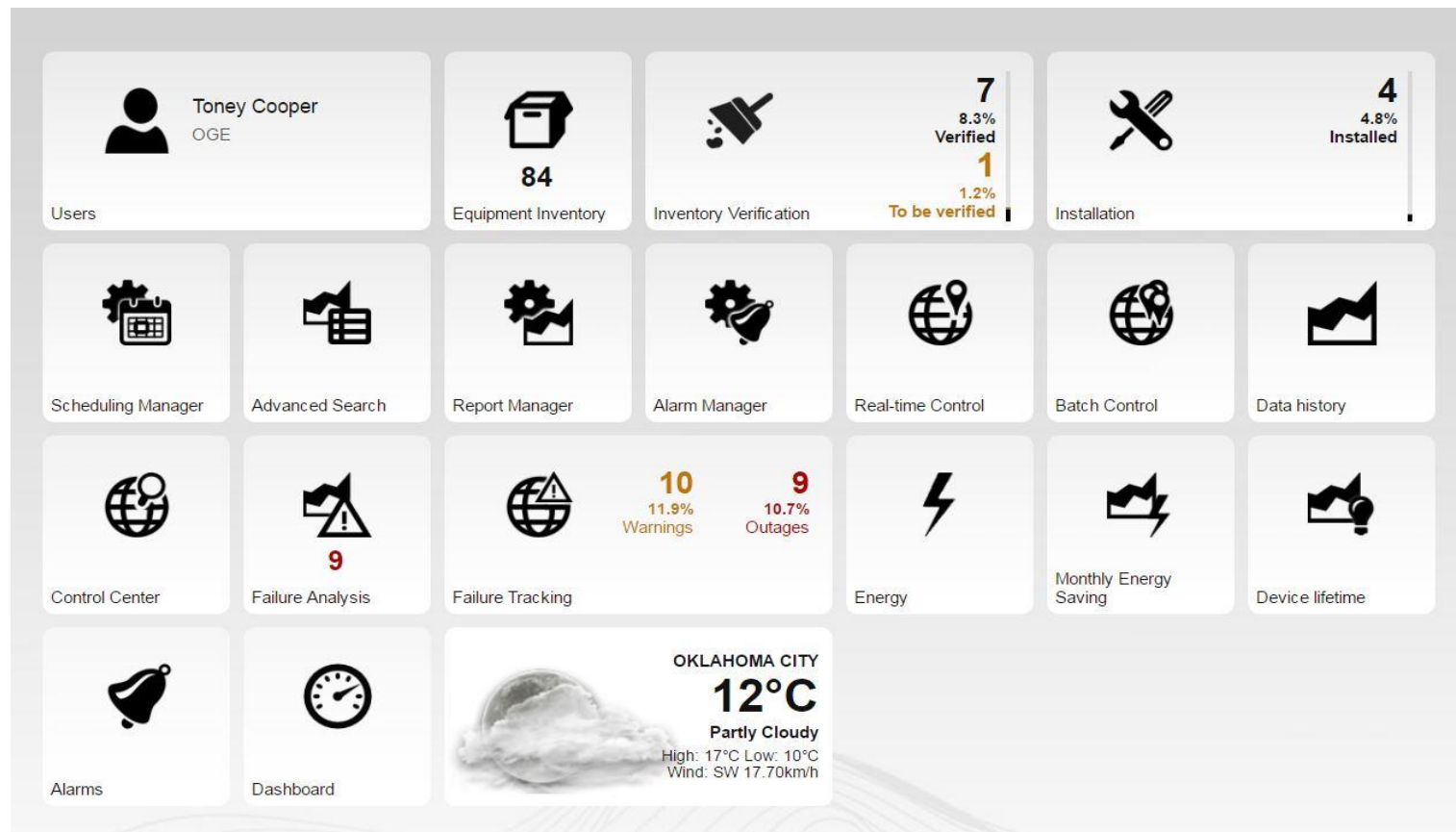
Increase the value OG&E provides to our customers by providing higher quality, controllable lighting, leading to increased customer satisfaction through reduced lighting outages, remote dimming, remote on/off, and asset management.

What are the Benefits of Advanced LED Lighting?

- Improved efficiency and nighttime visibility
- Extended bulb life (10 years vs. 2-3 years)
- Lower Cost: Average tariff reduction of approximately 15%
- Web-based Lighting Management Suite Streetlight Vision (SLV) leverages existing Smart Grid network
 - Failure Notification
 - Control and Monitor Capability
 - GPS tracking
 - Improved Asset Management
- Potential for automated maintenance tickets leading to reduced call-ins

What is Streetlight Vision (SLV)?

- SLV is our Lighting Management System, allowing OG&E to take advantage of the technology in the Advanced Controller



What is Streetlight Vision (SLV)?

The screenshot displays the Streetlight Vision (SLV) web interface. On the left, an 'Equipment Inventory' sidebar lists various devices, with 'CIMCON Unit 3' selected. The main area shows a map with several light icons. On the right, a 'STREETLIGHT' data panel provides detailed information for the selected unit.

Equipment Inventory

- OG&E (20 devices)
- OKC-Pilot (20 devices)
- AP-1009F3
- CIMCON Unit 3**
- Cimcon 11
- Cimcon 63
- Cimcon Unit 10
- Cimcon Unit 2 - GPS
- Cimcon Unit 65
- Sinrise Unit 14
- Sunrise Unit 1 indoor demo
- Sunrise Unit 10
- Sunrise Unit 11
- Sunrise Unit 12
- Sunrise Unit 13
- Sunrise Unit 15
- Sunrise Unit 2 Desk Demo
- Sunrise Unit 3 indoor demo
- Sunrise Unit 6
- Sunrise Unit 7
- Sunrise Unit 8
- Sunrise Unit 9

STREETLIGHT

Name: CIMCON Unit 3
GeoZone: OKC-Pilot
Latitude: 35.43204 ° Longitude: -97.49460 °

Identity | Inventory | Electrical network

Identity of the light point

Controller ID *: AP-1009F3
Identifier *: STLT-55FBFC

Control System

Type of equipment *: SSN Cimcon Dim Phot...
Dimming group: OGE - Test-Sunrise...
Unique address: 00:13:50:03:00:57:C3:8E
Controller install date: false
Verified: [dropdown]

Install date
Serial number
Device HW version
NIC serial number
NIC SW version
NIC HW version

SLV provides Coordinates, Network Status, Error Codes, Serial Numbers, MAC Address, Install/Provisioning Date, and many more...

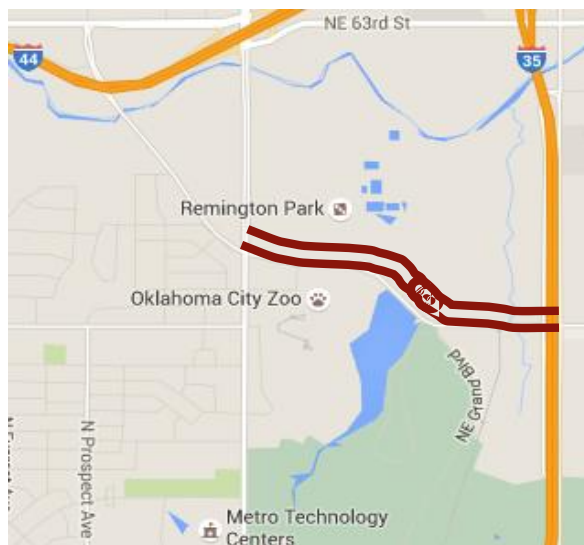
Powered by Streetlight.Vision

Proposed OKC Technology Demonstration

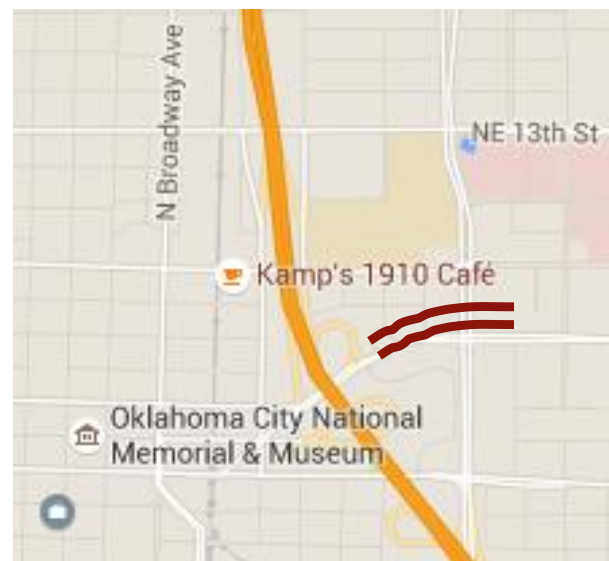
- OGE to install LED lights in two locations to showcase functionality and benefits of Advanced LED Technology
 - OGE will maintain lights for 24 months
 - Adventure District (45 lights) and Innovation District (12 lights)
- OGE will collaborate with OKC to assess the abilities of the Advanced LED System, and how it relates to maintenance, public acceptance, and energy consumption of the lighting system
- New LED Lights will roll into new lighting tariff at the end of the demonstration

OKC Technology Demonstration (locations)

- OGE will install Advanced LED Roadway Lights and Galvanized Steel Poles



OKC Adventure District
NE 50th St. ~45 Lights



OKC Innovation District
NE 8th St. ~12 Lights

Lighting the Way

- Functionality of controllers
 - Network stability
 - Durability (weather)
 - Command response
- Scheduling function
 - Community feedback
 - Dimming
- Failure notifications
 - Proactive restoration capabilities



Cimcon iSLC
3100-7P





Thank You