

OKCCC

OKLAHOMA CITY CONVENTION CENTER



FEBRUARY 2017
PRELIMINARY REPORT - DESIGN PRESENTATION

POPULOUS[®] GSB, INC.  maps 3
oklahoma city

DESIGN PRINCIPLES

UNIQUE VISITOR EXPERIENCE

NOT ONLY UNIQUE TO OKC, BUT TO THE INDUSTRY AS WELL

PEDESTRIAN DISTRICT

AN INVITING PEDESTRIAN SCALE THAT CREATES ENERGY AND UNITES THE DISTRICT

DIVISION OF SHOWS

ULTIMATE ADAPTABILITY, NEVER HAVING TO SAY “NO”

ELEVATED BALLROOM

CIVIC SCALE WITH VIEWS TOWARD DOWNTOWN, PARK, AND FUTURE DEVELOPMENT

URBAN INTEGRATION

CONNECTION TO CIVIC INFRASTRUCTURE UNITING THE URBAN CORE

PARK CONNECTIONS

A SUSTAINABLE RELATIONSHIP TO THE PARK THAT INCORPORATES THE DOWNTOWN VISION

EXPANSION

CONSIDERATION FOR FUTURE GROWTH

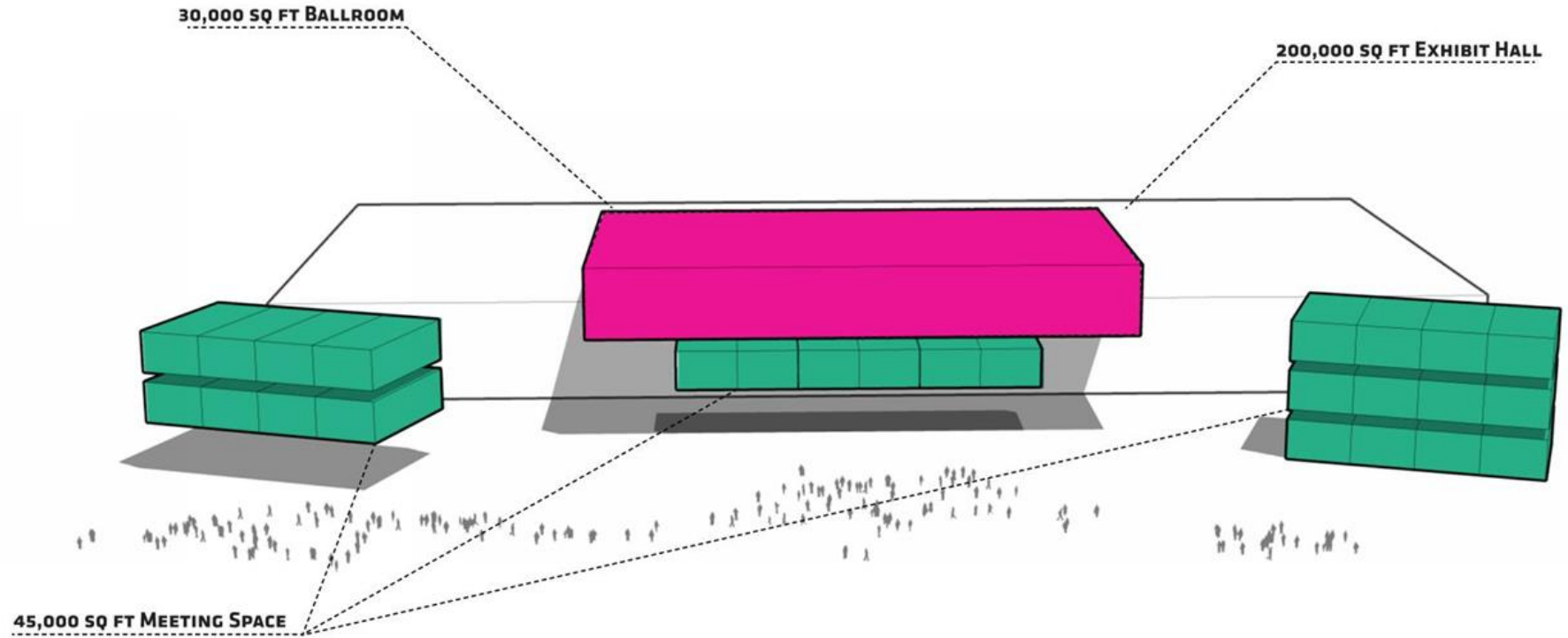
DEVELOPMENT OPPORTUNITIES

STIMULATE INTEREST IN THE CITY AND PROMOTE URBAN GROWTH

These Design Principles have been of great importance since the inception of this project. The principles were developed over time with the cooperation of the entire project team. This list is key to the ongoing success of the design as we move into the next phase of design. The Principles have been established with the collective goals of the Design Team, MAPS 3, the Convention Center Subcommittee, the Citizens Advisory Board, and other city officials in mind. By establishing these goals early and referencing them often, we utilize them as a design checklist, to constantly reference during the remainder of the process and ensure a successful design.

PROJECT COORDINATION

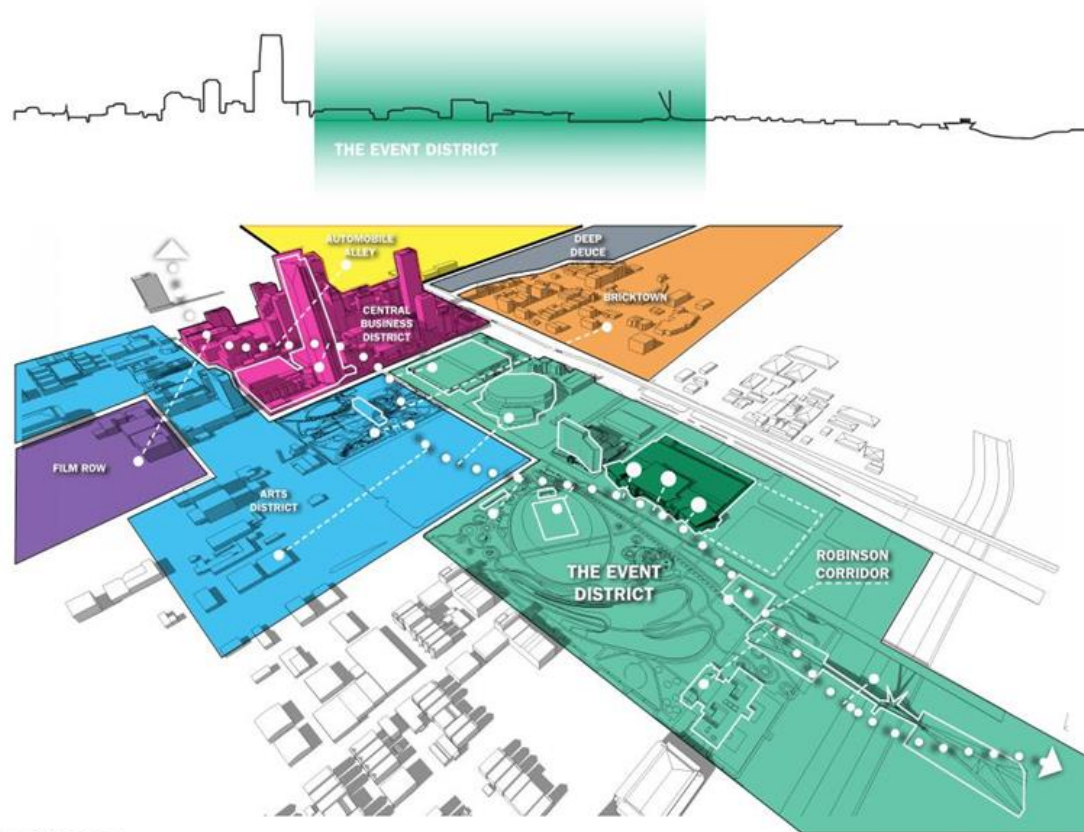
- MAPS 3 Convention Center Sub-Committee
- MAPS 3 Citizens Advisory Board
- Oklahoma City Mayor and City Council
- Downtown Design Review Committee
- The Alliance for Economic Development
- Oklahoma City Planning Department
- Oklahoma City Public Works Department
- Adjacent MAPS 3 Project Teams
- Omni Hotel Team
- OKC Fire Department and Building Plan Review
- OKC Police Department and Local SMG Security Manager
- Public and Private Utility Providers
- Embark / City Parking
- Oklahoma City IT Department
- SMG (Future Building Operator)
- ADG (MAPS 3 Program Manager)



DESIGN RECAP

THE EVENT DISTRICT

The new convention center will be the anchor tenant of the new Oklahoma City Event District. What an exciting time for the city and opportunity for this facility. The design team has understood, even from the earliest of stages, the importance for a building of this scale to be a wonderful neighbor. A unique identity is truly being formed with the development of the downtown streetcar system, project 180, the headquarters hotel, the downtown public park, the Oklahoma boulevard, and of course, the convention center. It has been of the utmost importance to the design team to be the uniting factor within the district, to be the "Living Room" of the city, and to attract guests from not only locally or regionally, but globally, to project all that Oklahoma City has to offer. Having the ability to connect the new event district to all of the other exciting and vibrant neighborhoods in the area will elevate Oklahoma City as a true global destination.

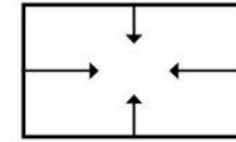


INSIDE LOOKING OUT

Populous continues to look at trends and the forces that drive convention design. Over the years it has been apparent that the building typology is evolving. We have seen a transition from buildings that were more internally focused, to buildings that are more exterior focused. These buildings not only serve the patrons, but also send them back out into the city, to experience all of the wonderful amenities within the district. You can categorize this movement into three unique ideas:

1. BUILDING FOCUSED DESIGN

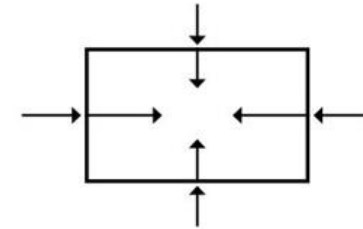
Internally focused program with little natural light or exposure to the outdoors.



1. Building Focused

2. EVENT FOCUSED DESIGN

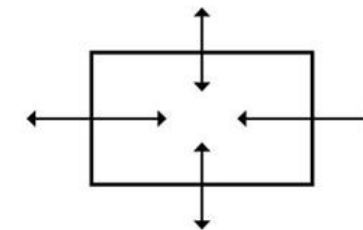
A focus on drawing people into the building while providing an elevated hospitality experience with views to the city.



2. Event Focused

3. CITY FOCUSED DESIGN

True incorporation into the urban fabric of the city. The use of natural light and views outward draw people into the facility and make them feel comfortable while inside. The use of a thoughtful design, local materials, and aesthetics make for a one of a kind experience that is truly unique to the city/region.



3. City Focused

DESIGN EVOLUTION

The design process began with simple blocking and stacking exercises, with the intention of testing how program fit on the site and establishing relationships within the building parts. Over the course of the exercise, we developed upwards of thirty to forty unique design conditions. Each specific option was analyzed, narrowing them down to a series of eleven options that we believe were all viable for the selected site.

Through a series of workshops with the overall design team, we concluded that we could eliminate 3 of the 11 massing options due to various restrictions. The remaining 8 designs were then classified into 3 unique categories.

FUNCTION: Establishing solid relationships among all program areas.

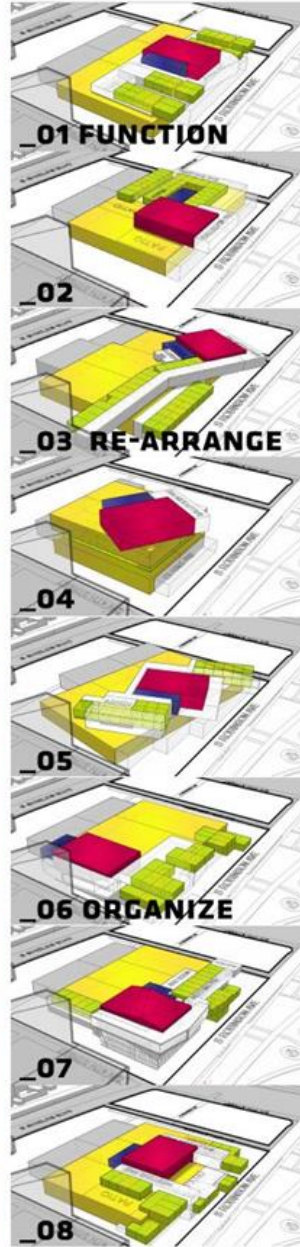
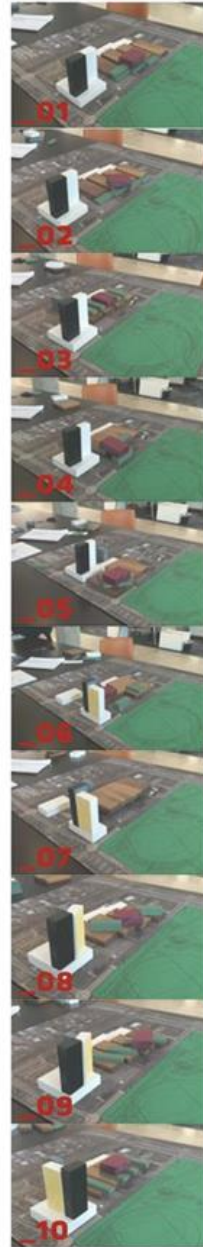
RE-ARRANGE: Use these relationships and sculpt them to generate interest.

ORGANIZE: Take this new found interest and organize the program to maintain functionality while creating a high level of design.

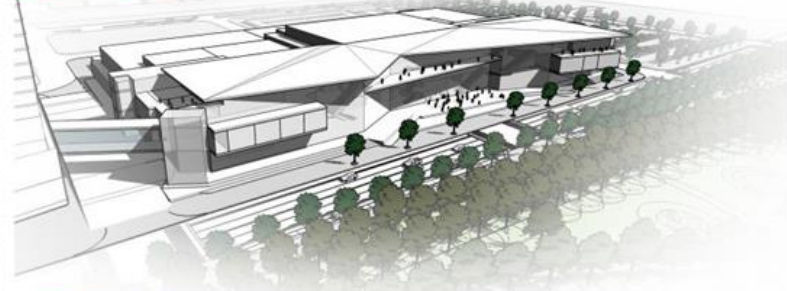
As the designs developed, we condensed 8 options into 3 unique design diagrams. Each diagram focused on the location of the ballroom and meeting room program and how each related to the potential hotel development, the adjacent park, future expansion, and views toward the city. Through a series of meetings and great commentary from the overall MAPS 3 team, Public Works, the Planning Department, and the Convention Center Subcommittee, it was established that a hybrid option of the three designs would best work as we proceeded through **CONCEPTUAL REPORT**

During **SCHEMATIC DESIGN** a series of studies were performed to explore the overall form of the building. By focusing on key program areas, relationships to the district, and protection from the elements, a unique design was created. During this time, cost estimates and program reconciliations were conducted to aid us in the design of the overall aesthetic. Reactions to the simple massing of the facility was overwhelmingly positive.

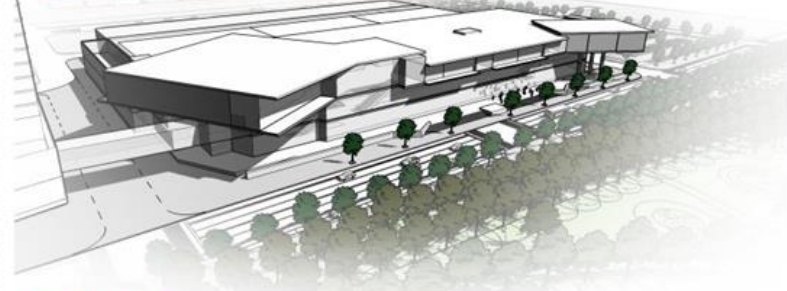
As the design progressed through **DESIGN DEVELOPMENT**, the design team honed in on the overall look and feel of the building. The basis of materials were chosen in order to reflect the relationship to the site and to the city. Refinement was done on the interior layout of the building to maximize circulation and access to program areas.



PN PANORAMA



CV CITY VIEW



PV PARK VIEW



CONCEPTUAL REPORT



SCHEMATIC DESIGN



DESIGN DEVELOPMENT



DESIGN EVOLUTION

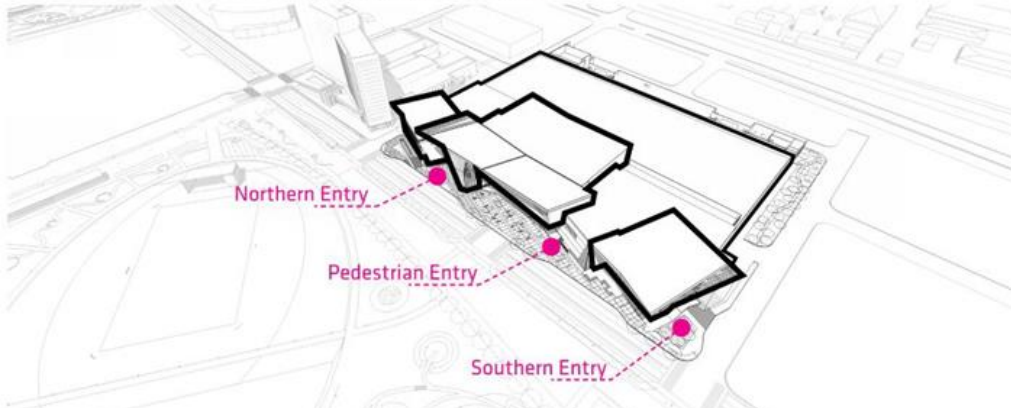
Through the remainder of **PRELIMINARY REPORT**, the attention of the design team focused on refining exterior and interior materials, the execution of a full coordinated set of drawings with all consultants, updating cost estimates and the generation of the design story to guide the remainder of the project. **Core To Shore / Earth to Sky** was created to encompass everything that the facility can offer both internally and externally. The use of these concepts has led us to a facility that stands out not only in Oklahoma City but in the industry



PRELIMINARY REPORT

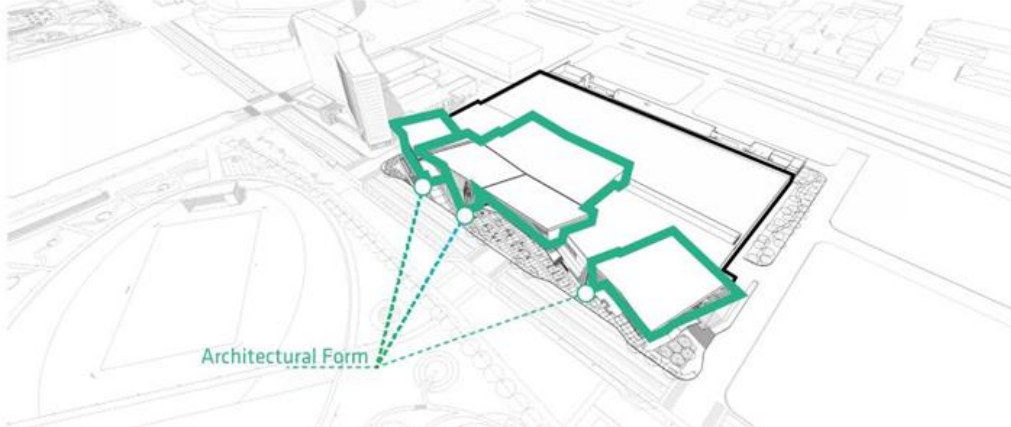


DESIGN DRIVERS



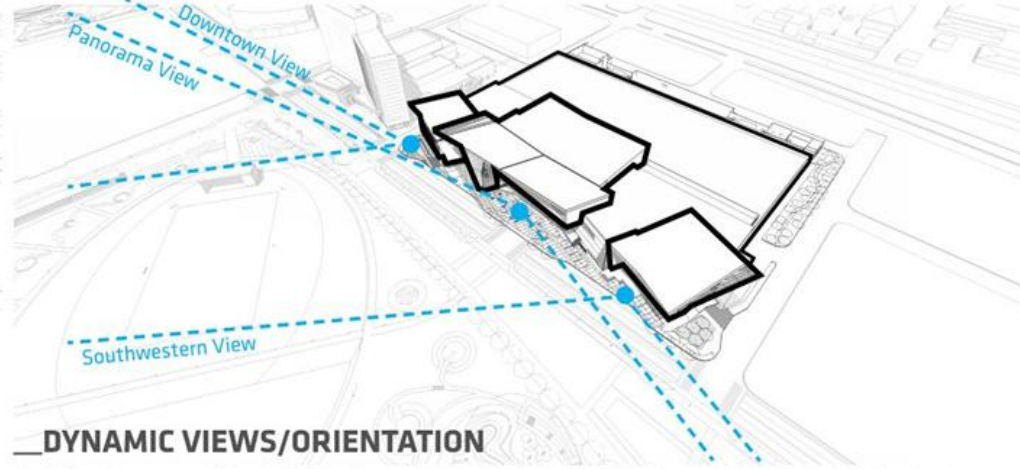
__PEDESTRIAN ENTRY

Three main entries to the facility lie along the western facade, each corresponding to unique site conditions. The northern entry handles a VIP drop off, a pedestrian connection to the future hotel and streetcar stop. The center entry provides a direct connection to the new downtown park. The southern entry is designed to handle pedestrians arriving in vehicles from the proposed southern parking lot.



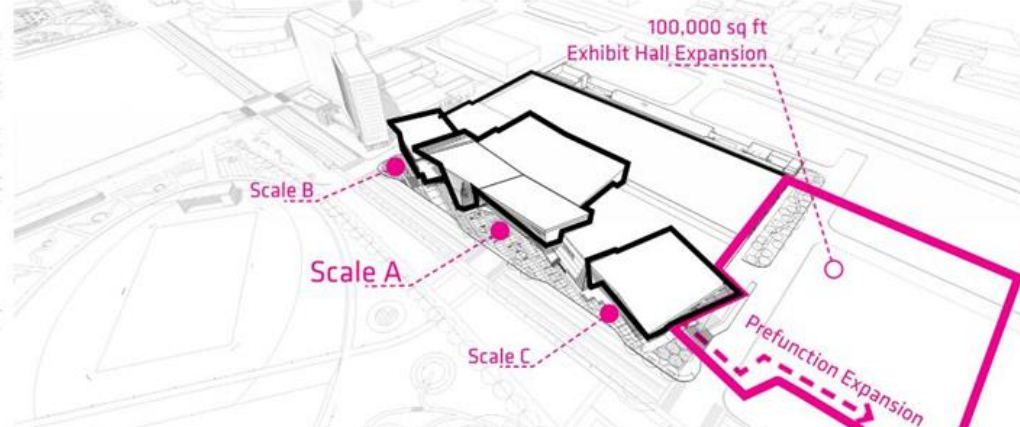
__PROTECTION

In an effort to further protect the building and its patrons, deep architectural overhangs were created to not only passively mitigate exposure to the elements, but to add architectural interest to the design. These elements provide an identity to the program areas that anchor the western edge of the convention center.



__DYNAMIC VIEWS/ORIENTATION

Each Program area of the building along the western edge is rotated at a 20 degree angle in plan to the northwest. The rotation provides added protection from western and southern facing sun, adds articulation to the design, and generates views out towards downtown, the new downtown park, and any future development in the district.



__SCALE /EXPANSION

Because of the overall dimension of the western facade of the convention center, a conscious effort was made to create a unique sense of scale for each program area. From a design perspective, the individual scales relieve the almost 600' foot long facade and provide a better articulation from a civic experience. The facility is also designed to accept a future expansion at the southernmost edge.

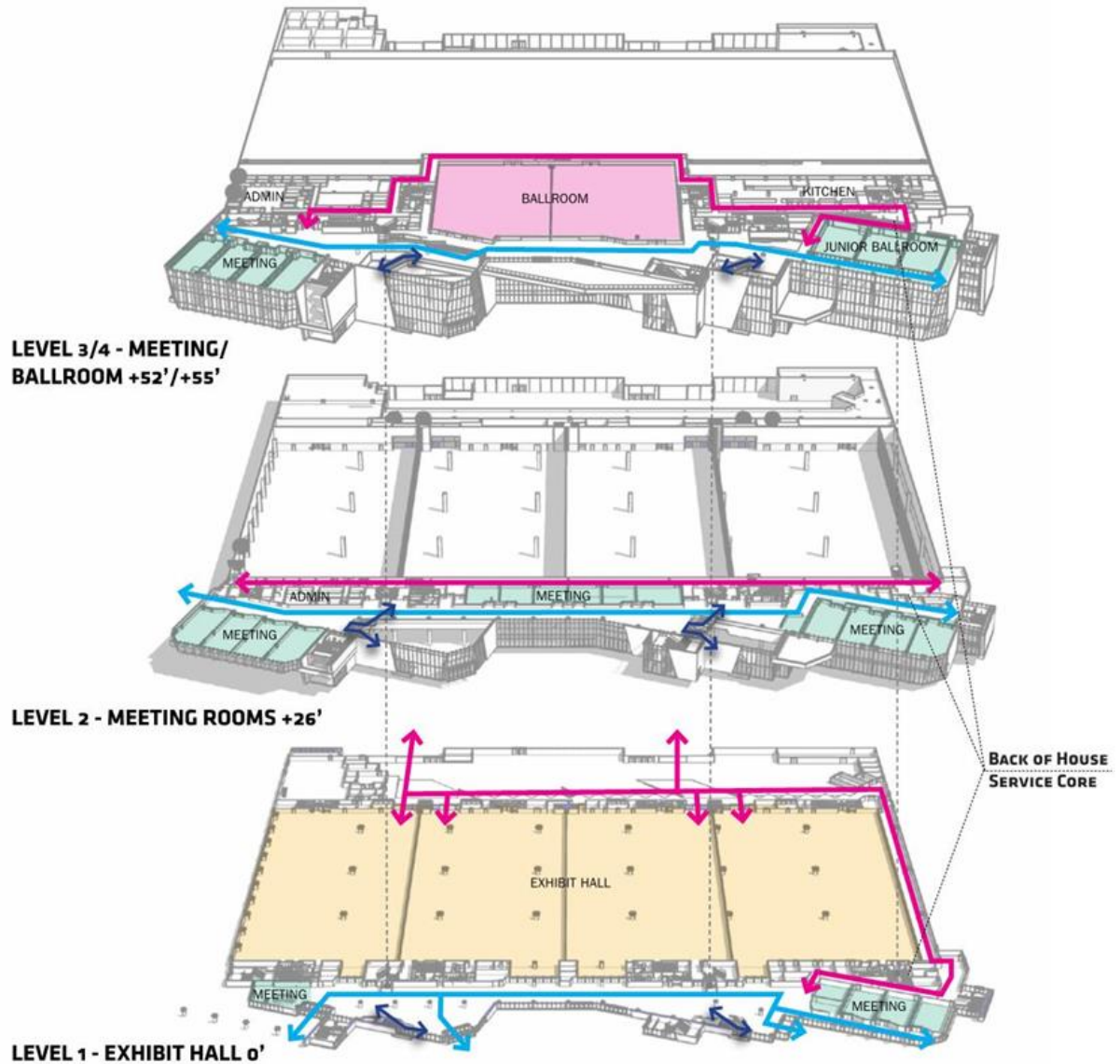
BUILDING CIRCULATION

The Lowest Level of the facility (**LEVEL 1**) consists of back of house circulation from the eastern loading dock along an exterior covered service connection on the southern end of the building. This service connection terminates at a back of house service core that provides access to each level's back of house area via a single freight elevator and service elevator. The freight elevator is sized to allow for maximum transportation of goods to the kitchen and ballroom. Sixteen foot overhead doors allow direct access into the exhibit hall directly from the loading area. The prefunction connects each of the three entries along the western facade and provides a front of house entry into each of the exhibit hall divisions. Double height circulation atriums to the north and the south frame the vertical circulation experience.

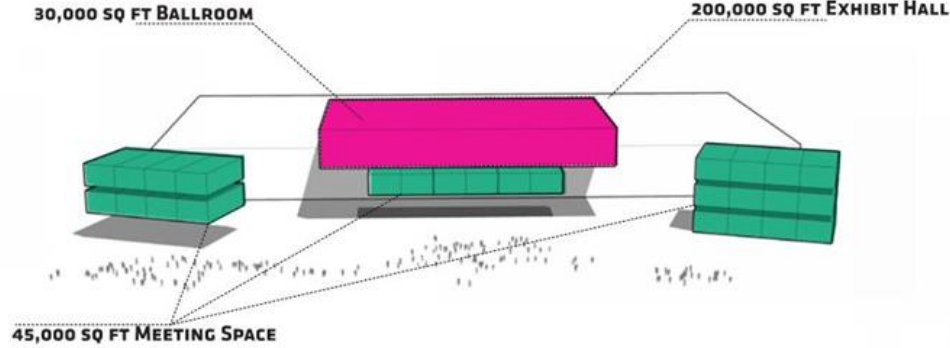
The Meeting Room Mezzanine at **LEVEL 2 (+26')** has a simple front and back of house circulation path. A back of house corridor runs along the entirety of the meeting program and connects directly to the back of house service core at that level. The front of house circulation provides access to all of the meeting room program while still allowing patrons to have dynamic views to the outside and connect with the district.

The uppermost Meeting and Ballroom Level (**LEVEL 3/4 +52'/55'**) share a continuous back of house corridor that connects the service core to the central kitchen, and allows direct back of house access to the Main and Junior Ballrooms. The corresponding prefunction areas to the north and south receive the vertical circulation atriums to provide access to the meeting and ballroom program on this level. The ballroom, its corresponding prefunction and exterior balcony, is raised 3 feet above the adjacent meeting rooms and prefunction area to add a level of significance and elegance as patrons ascend to the Ballroom Experience. The ballroom is accessed by two unique grand stairs from the north and south atriums.

- FRONT OF HOUSE CIRCULATION** ↔
- BACK OF HOUSE CIRCULATION** ↔
- OPEN STAIR/ESCALATOR** ↔
- ELEVATOR** ⋯



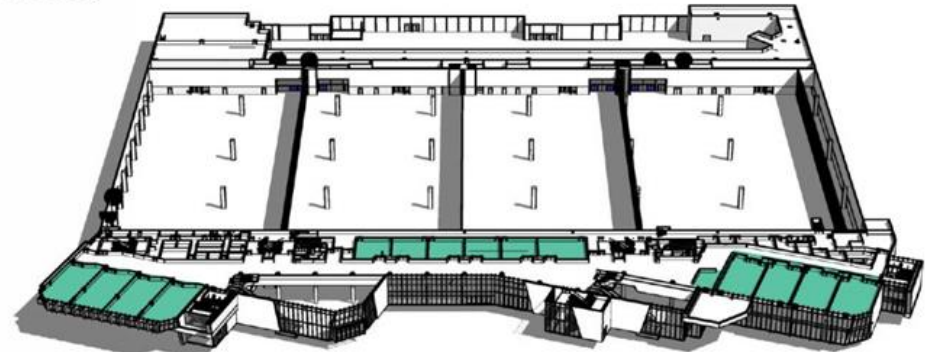
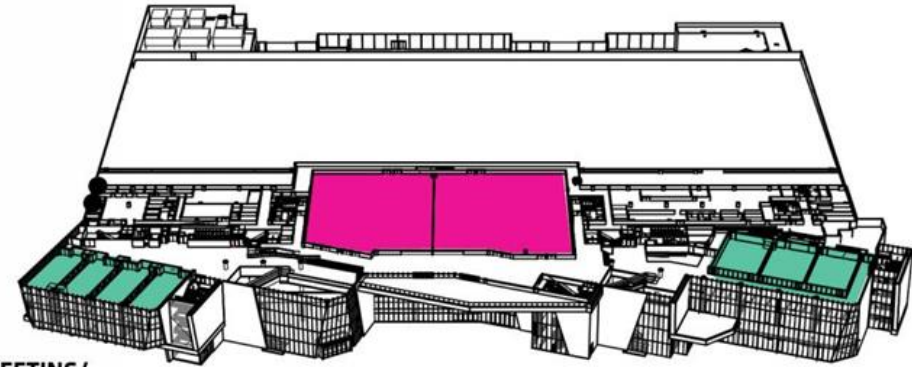
BUILDING LAYOUT



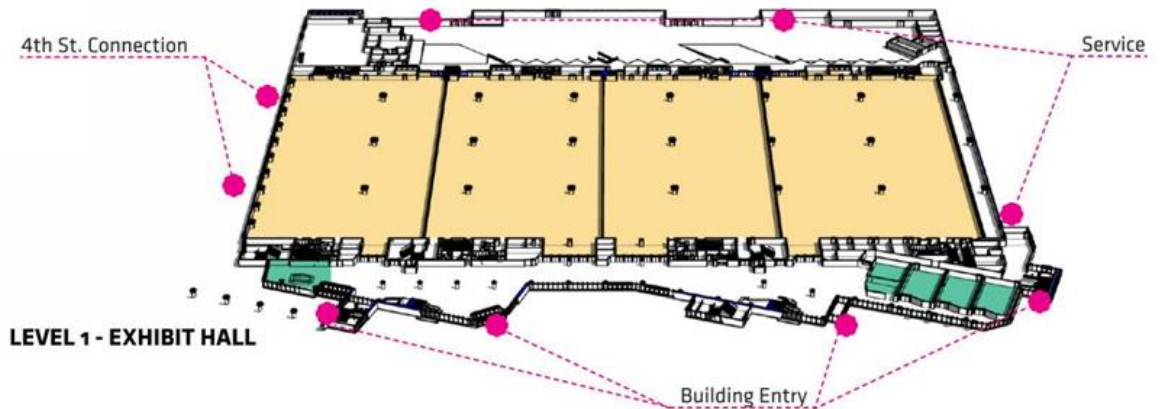
All **200,000** square feet of the **Exhibit Hall** program and adjacent loading dock lie on the Ground Level (**LEVEL 1**) of the facility. The proportions run north / south in the long axis and east west in the short axis. The Exhibit Hall has the ability to be divided into four individual halls, Halls A, B, C and D. A series of large overhead doors open to the north to allow natural light and access onto the proposed SW. 4th street plaza.

The **Meeting Room** Program is split between every level of the building in order to provide flexibility in selling and operating the facility, proper circulation, and to create a unique user experience for each meeting room neighborhood. Approximately 5,000 square feet of the meeting room space exists on the Ground Level (**LEVEL 1**). 20,000 square feet of the other meeting room program is located on the Meeting Room Mezzanine (**LEVEL 2**), and is split between meeting room neighborhoods in the center, and on the north and south ends of the building. The remaining 20,000 square feet of meeting room program and junior ballroom program sit at the north and south end of the upper most Ballroom and Meeting Room Level (**LEVEL 3**). A portion of the meeting rooms are located against the glass on the western facade in order to allow for views out towards the surrounding district and to capture natural light. Each meeting room has either a direct back of house connection or serviceable pantry nearby. In a full breakout condition, there is the potential for 27 unique meetings rooms.

Sitting at the absolute highest point of the building (**LEVEL 4**), is the **Ballroom Experience**. The Ballroom experience consists of the full 30,000 square feet of ballroom space, 10,000 square feet of adjacent prefunction, and 4,000 square feet of exterior panoramic balcony space. A series of vertical lifting walls on the western end of the ballroom provide the ability to have a continuous ballroom experience among all three areas. The Ballroom has direct back of house access to the Kitchen and the adjacent service core.

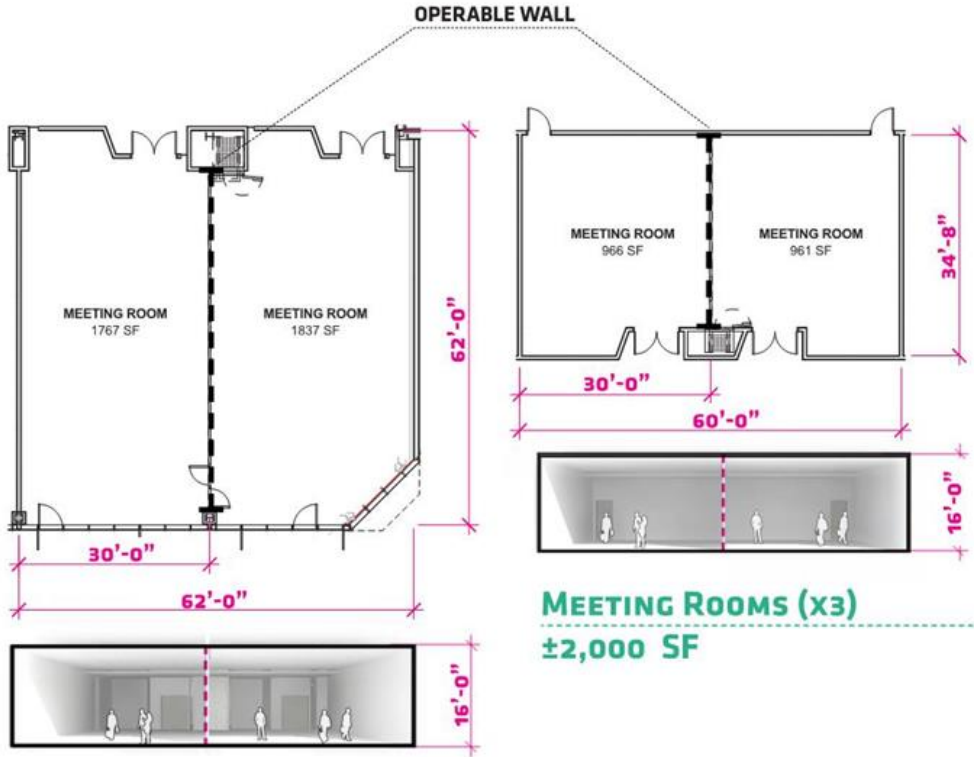


LEVEL 2 - MEETING ROOMS



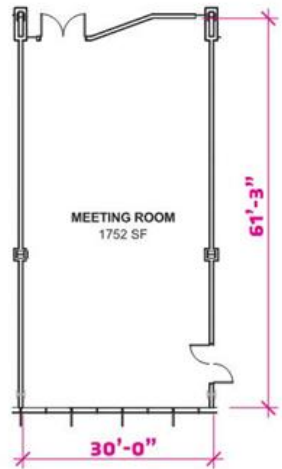
MEETING ROOM DETAILS / ENLARGED

Throughout the facility, each individual meeting room neighborhood has a unique ability to transform into larger or smaller rooms. A combination of both fixed and flexible rooms allows the operator and sales team to sell the building in a variety of ways in an effort to make the facility more appealing within the industry. The ability for the rooms to adapt reinforces the concept of flexibility in design and allows each individual room to respond to the changing needs of meeting planners and operators. The following pages contain a series of diagrams that demonstrate the flexibility within each neighborhood. All meeting rooms have a 16 foot minimum ceiling height. The Junior Ballroom however, has a 20 foot clear height in order to accommodate larger events.

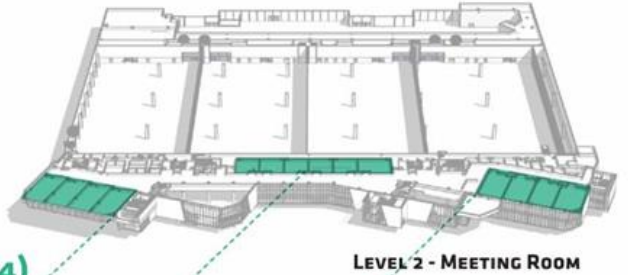
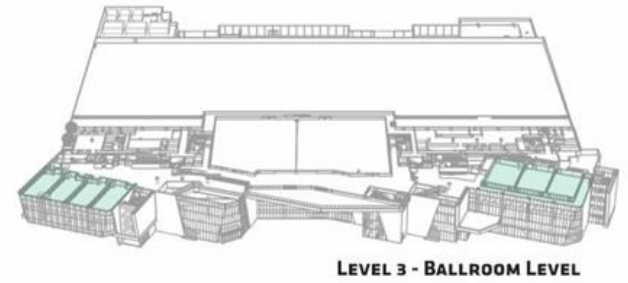


MEETING ROOMS (x2)
±3,525 SF

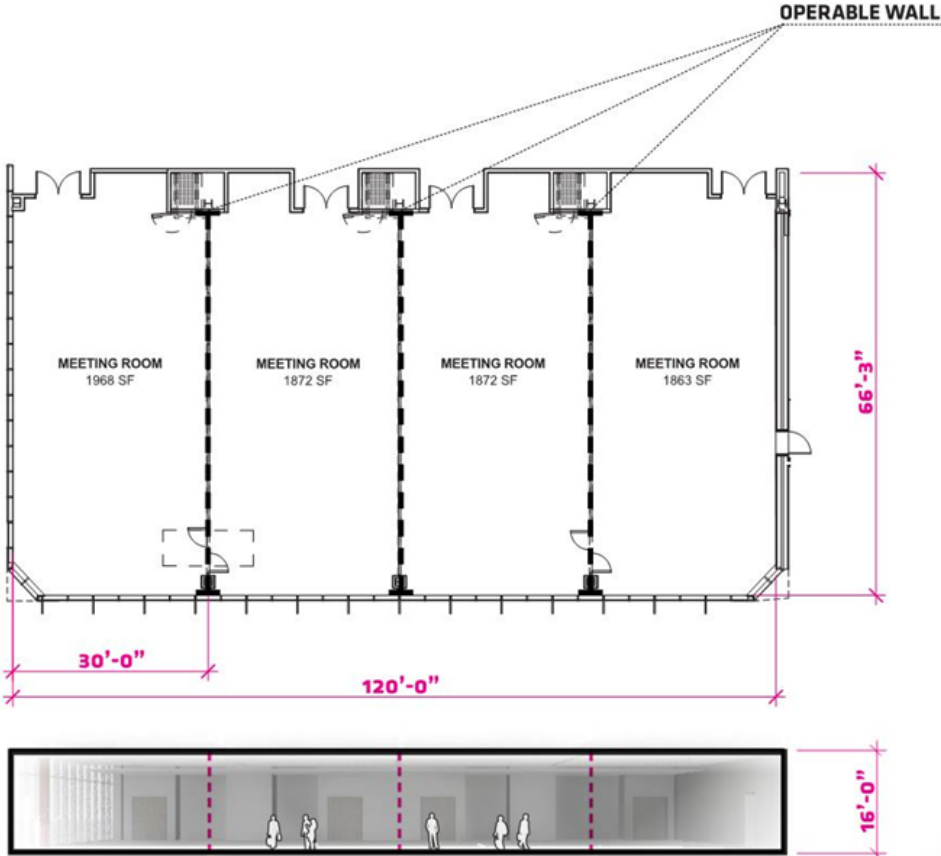
MEETING ROOMS (x3)
±2,000 SF



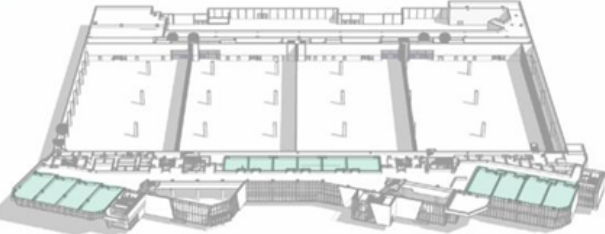
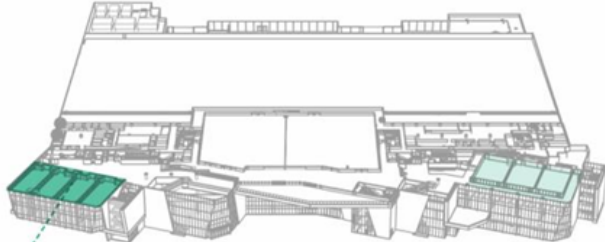
MEETING ROOMS (x4)
±1,900 SF



MEETING ROOM DETAILS / ENLARGED

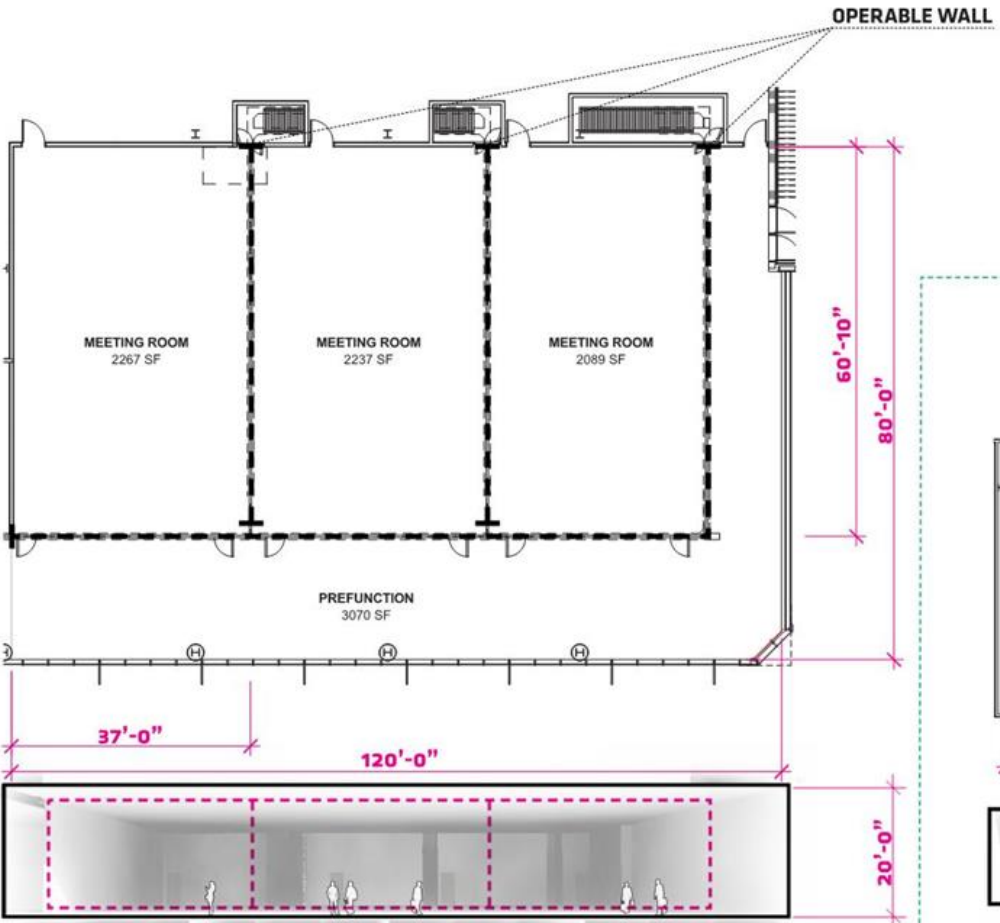


FLEXIBLE MEETING ROOMS (x1)
±7,500 SF

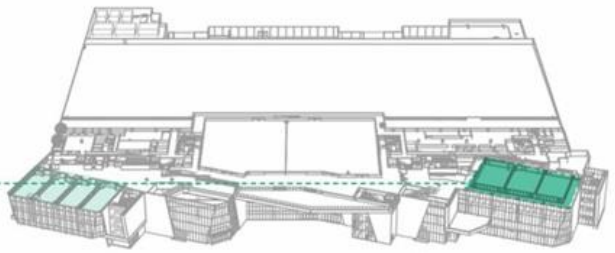


LEVEL 1 - EXHIBIT HALL

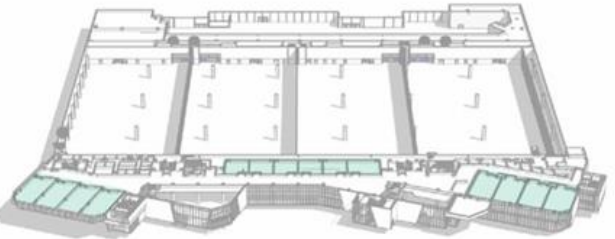
MEETING ROOM DETAILS / ENLARGED



FLEXIBLE MEETING ROOMS (x1)
±10,000 SF



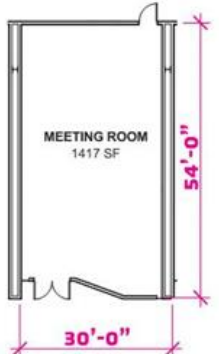
LEVEL 3 - BALLROOM LEVEL



LEVEL 2 - MEETING ROOM

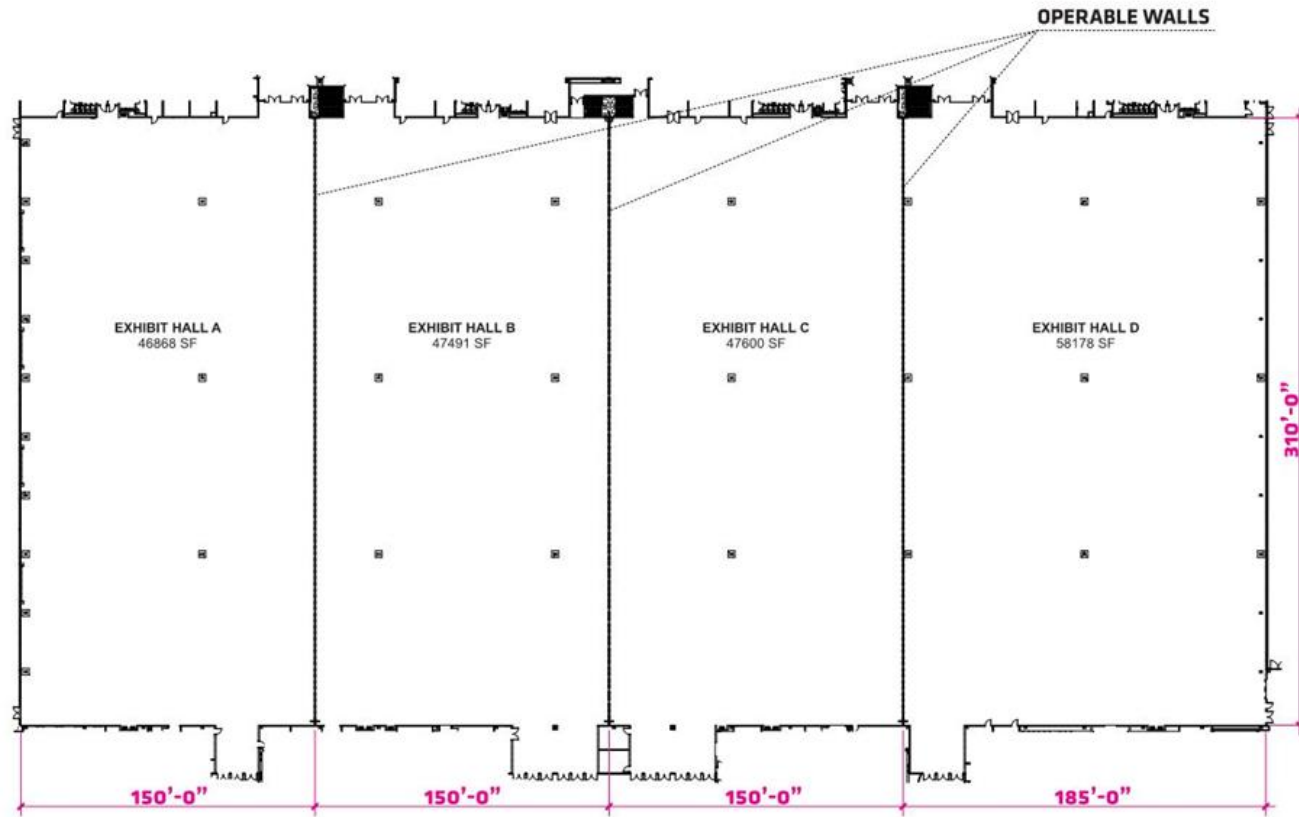


LEVEL 1 - EXHIBIT HALL



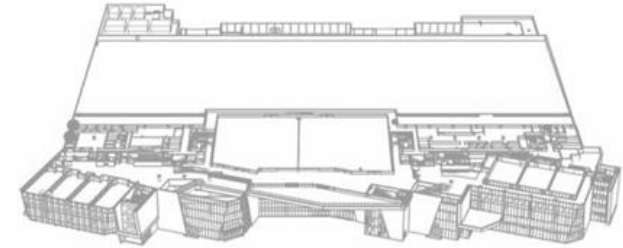
MEETING ROOMS (x3)
±1,420 SF

EXHIBIT HALL/ ENLARGED

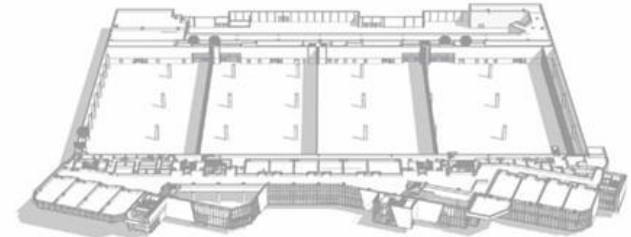


FLEXIBLE EXHIBIT HALLS (x4)
±47,600 SF

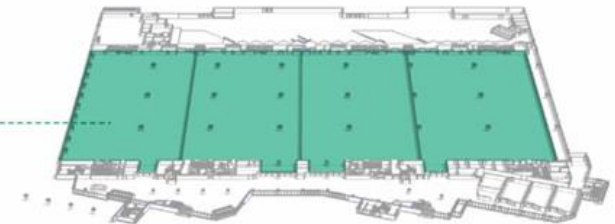
The Exhibit Hall consists of approximately 200,000 sq ft of open floor space with the ability to be subdivided into as many as four smaller halls. The clear height in each hall is 30' with floor mounted utility boxes on a 10' grid



LEVEL 3 - BALLROOM LEVEL

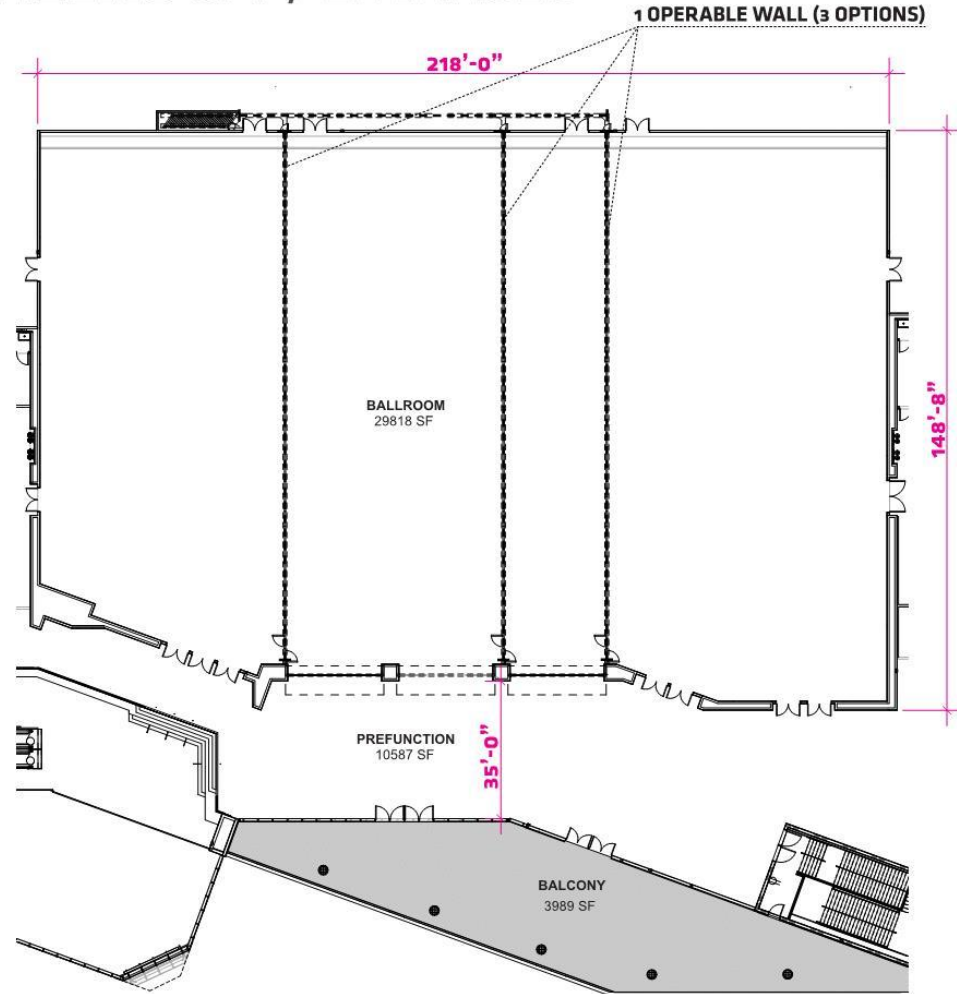


LEVEL 2 - MEETING ROOM



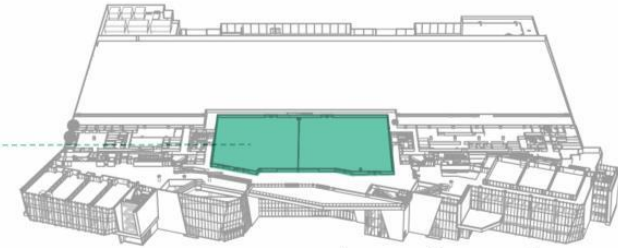
LEVEL 1 - EXHIBIT HALL

BALLROOM / ENLARGED

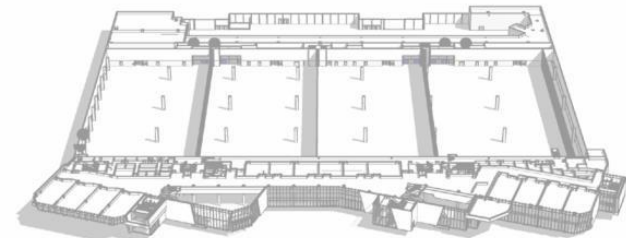


BALLROOM (X1)
±30,000 SF

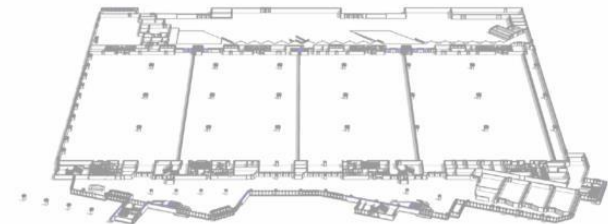
The main ballroom is designed to allow for ultimate flexibility. The 30,000 sq ft room can remain open, be divided into half, or into a 1/3 - 2/3 configuration by deploying a single operable wall along one of three overhead tracks. Three vertical lifting walls line the western edge of the ballroom, providing a seamless transition into the adjacent 10,000 sq ft prefunction area. This prefunction area then extends onto the 4,000 sq ft exterior balcony, creating a cohesive experience between all three of the spaces. The ceiling height of the ballroom is a consistent 28' minimum.



LEVEL 3 - BALLROOM LEVEL



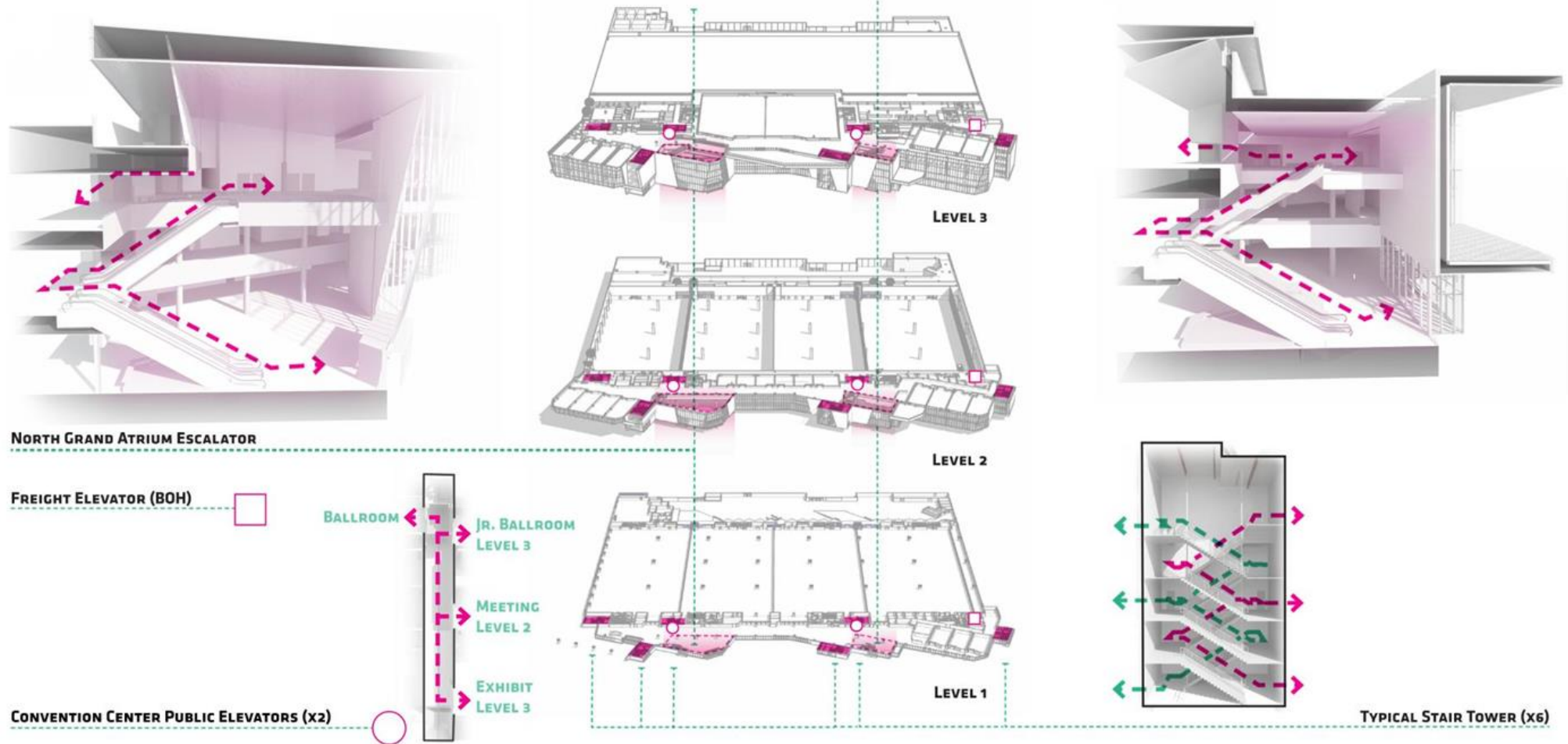
LEVEL 2 - MEETING ROOM



LEVEL 1 - EXHIBIT HALL

VERTICAL CIRCULATION / ENLARGED

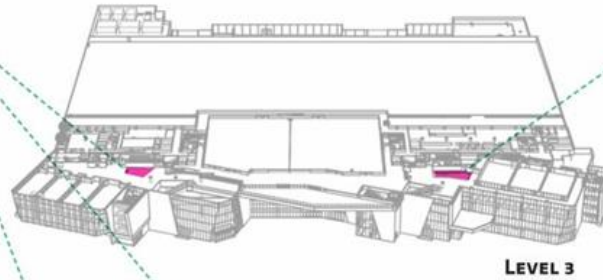
The main vertical circulation consists of two grand atriums; one at the southern entry and one that flanks the central and northern entries. Each atrium has two sets of two escalators and a monumental stair that transports patrons between levels. A passenger elevator is located in close proximity to each atrium for ease of transportation. A service core contains one freight elevator and one service elevator that connects each level's back of house areas. Six sets of exit stairs provide appropriate exiting capacity for large events and emergency situations.



INFORMAL MEETING SPACES / ENLARGED

On each level of the building, informal meeting room and break out spaces are located throughout the prefunction area. These informal areas allow guests to sit and chat, grab a bite to eat, or relax in between sessions or meetings. All lounges will be equipped with power, data, screens for presentations, information or advertisements, and loose, durable furniture to allow for added flexibility. These spaces are important to give visitors a causal break from day long meetings and to generate interest in what historically are long boring corridors.

LOUNGE (x3)
±500 SF

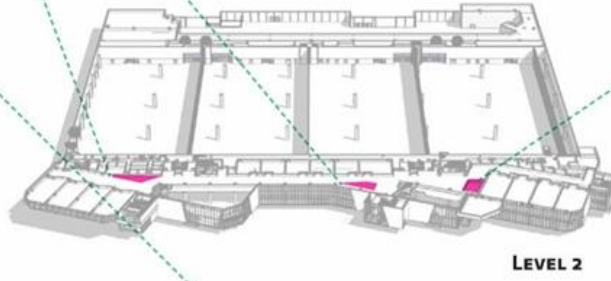


LEVEL 3

LOUNGE
±725 SF



LOUNGE
±1,000 SF



LEVEL 2

MEETING POD
±575 SF



SEATING AREA
±400 SF



LEVEL 1

MEETING PODS (x2)
±650 SF (EACH)



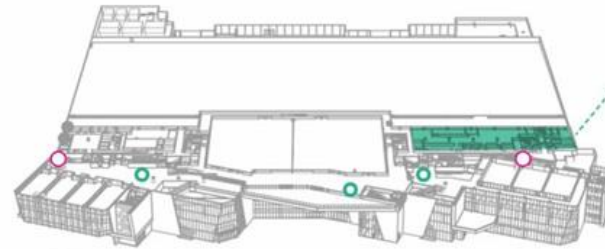
*Images shown on this page as design reference only

HOSPITALITY / FOOD SERVICE

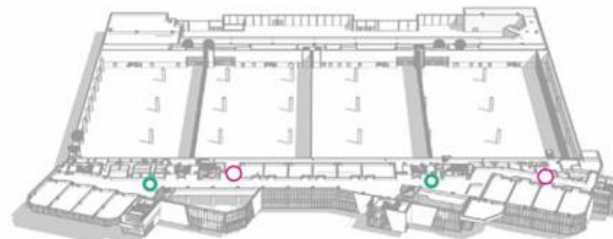
The central Kitchen sits directly adjacent to the Ballroom, providing direct access to the space. Mobile food stations that have the ability to attach to floor and wall mounted service connections on each level allow for flexibility in selling and serving food and drink. These connections are spread throughout the prefunction on each level to allow for flexibility in planning each event. A series of pantries are located adjacent to each program area in order to load in and serve each event.



POTENTIAL CAFÉ PER BUILDING OPERATOR



LEVEL 3



LEVEL 2



LEVEL 1

KITCHEN
±11,500 SF

PANTRIES (x8)

PORTABLES (x7)



*Images shown on this page as design reference only

REFERENCE PLAN / EXHIBIT HALL LEVEL

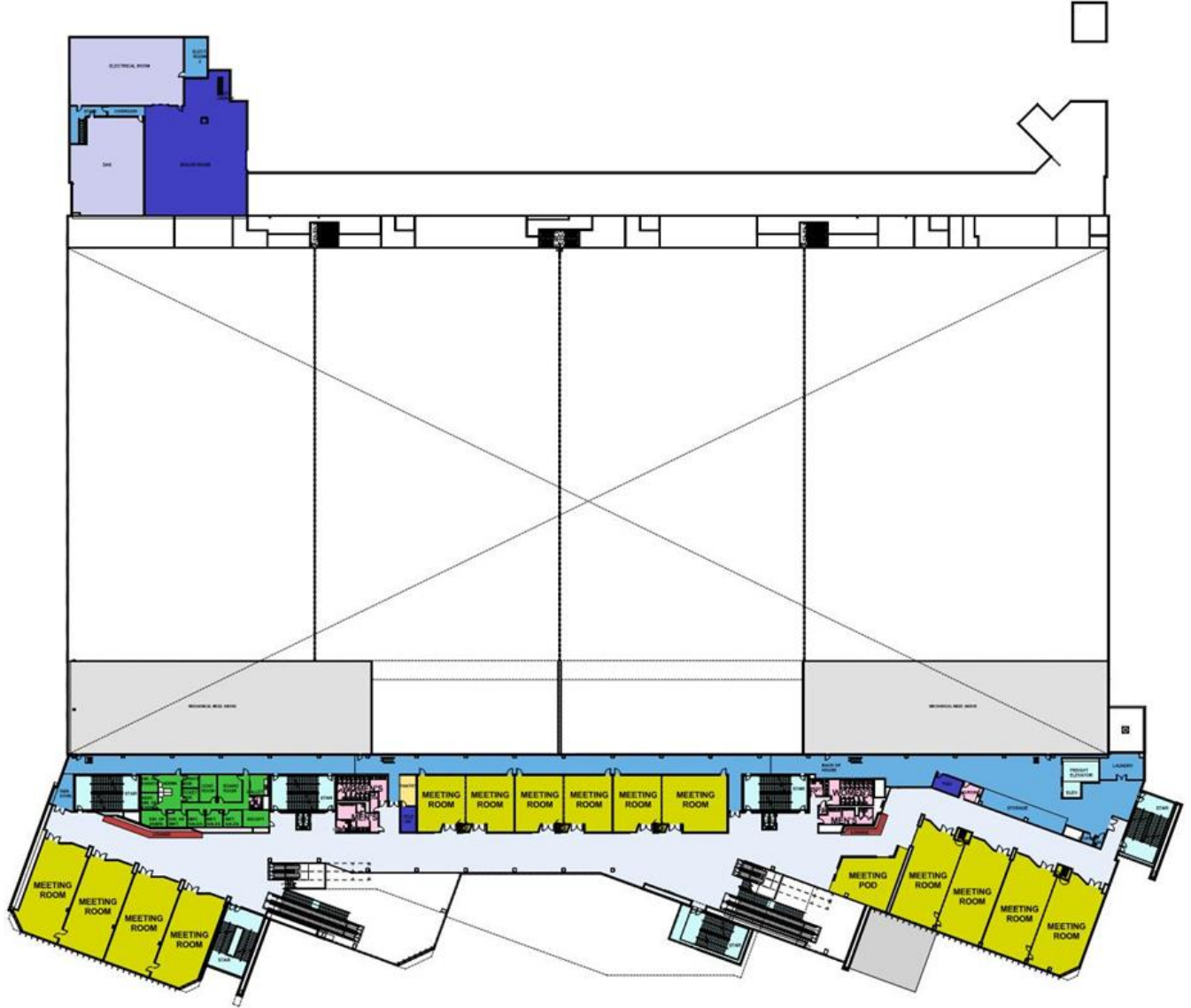
- PREFUNCTION
- REGISTRATION
- MEETING SPACE
- EXHIBITION SPACE
- BALLROOM
- FOOD SERVICE
- HOSPITALITY
- ADMINISTRATION
- VERTICAL CIRCULATION
- RESTROOM
- SUPPORT
- MEP
- LOADING



REFERENCE PLAN

/ MEETING ROOM MEZZ.

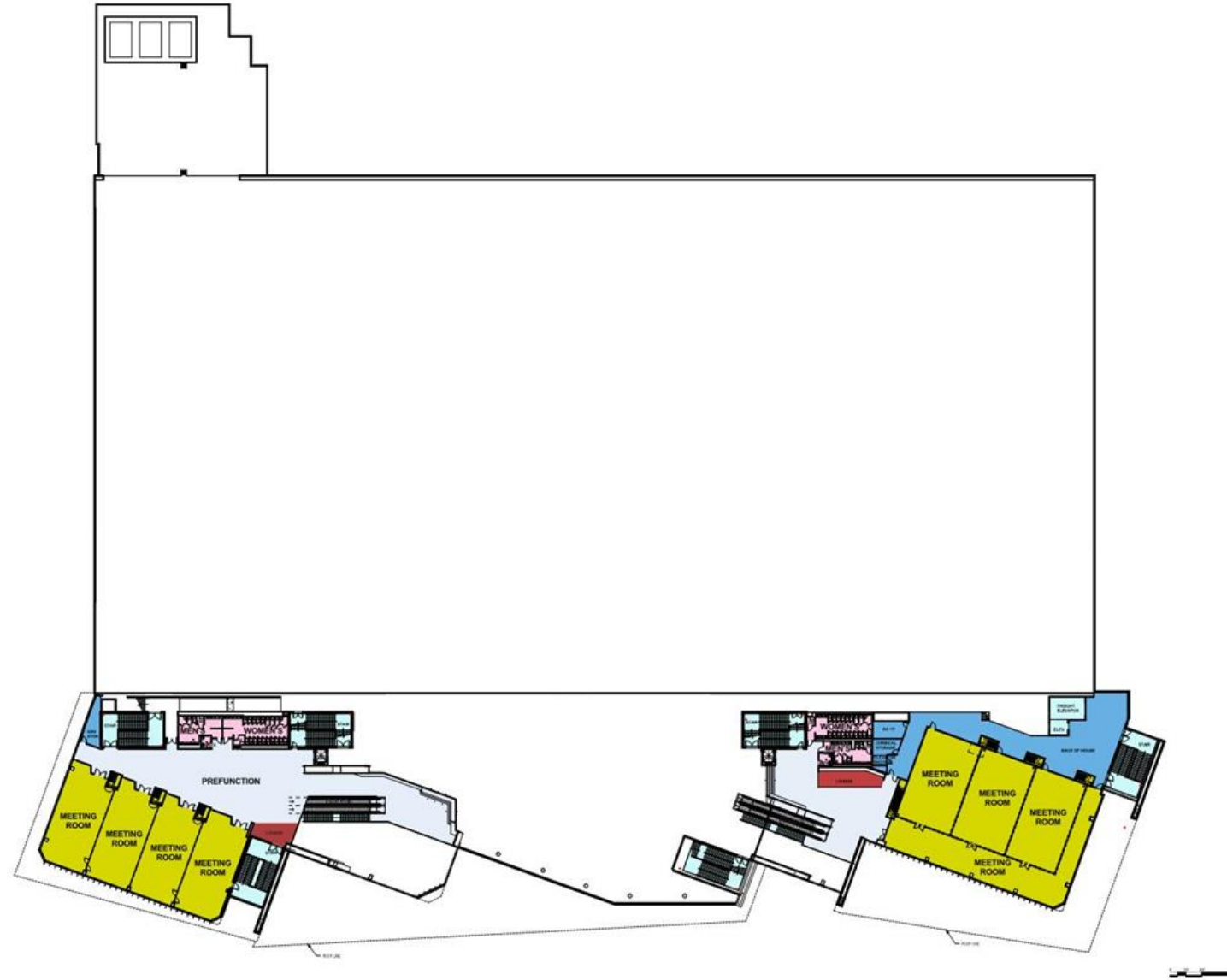
- PREFUNCTION
- REGISTRATION
- MEETING SPACE
- EXHIBITION SPACE
- BALLROOM
- FOOD SERVICE
- HOSPITALITY
- ADMINISTRATION
- VERTICAL CIRCULATION
- RESTROOM
- SUPPORT
- MEP
- LOADING



REFERENCE PLAN

/ BALLROOM LEVEL

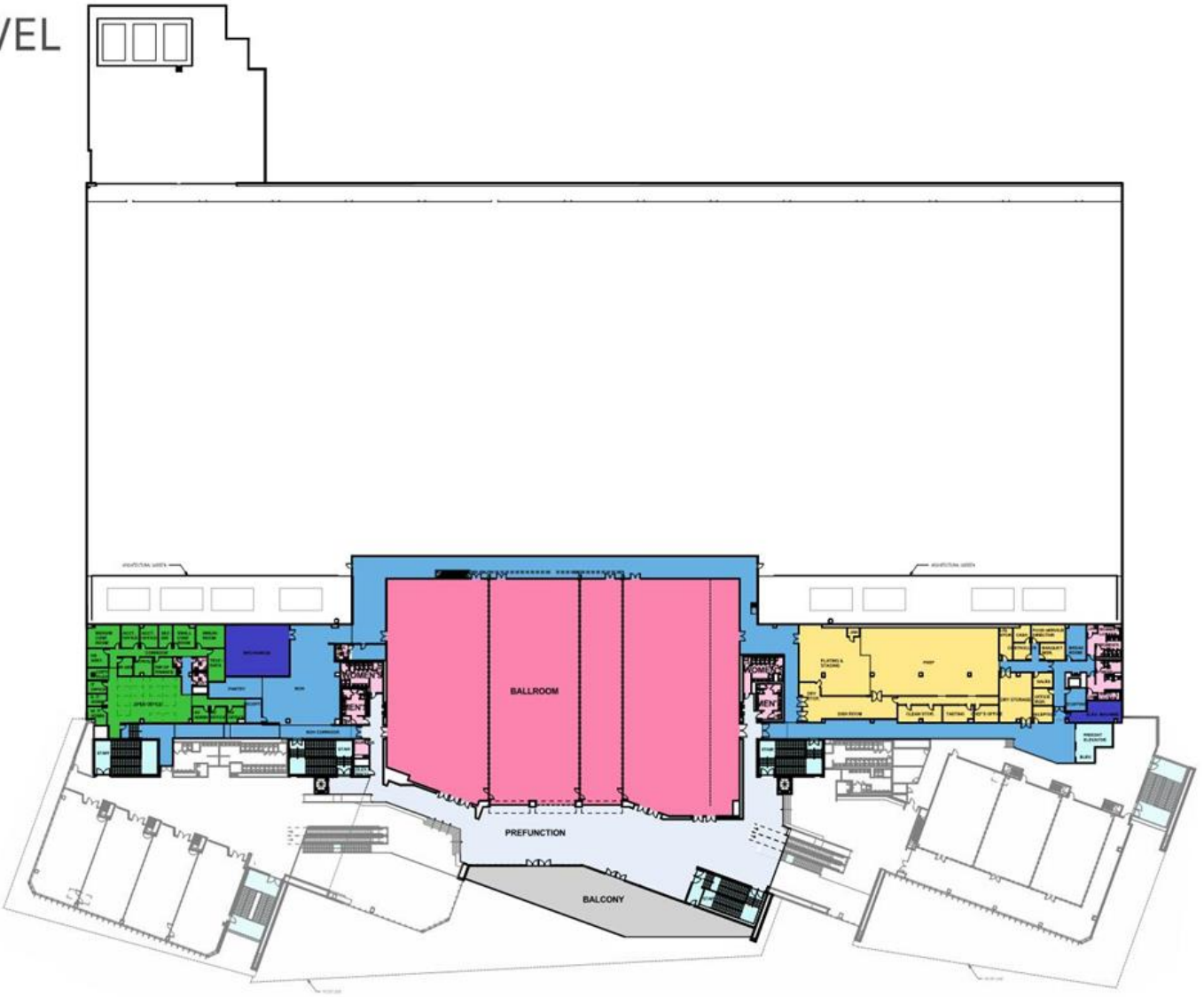
- PREFUNCTION
- REGISTRATION
- MEETING SPACE
- EXHIBITION SPACE
- BALLROOM
- FOOD SERVICE
- HOSPITALITY
- ADMINISTRATION
- VERTICAL CIRCULATION
- RESTROOM
- SUPPORT
- MEP
- LOADING



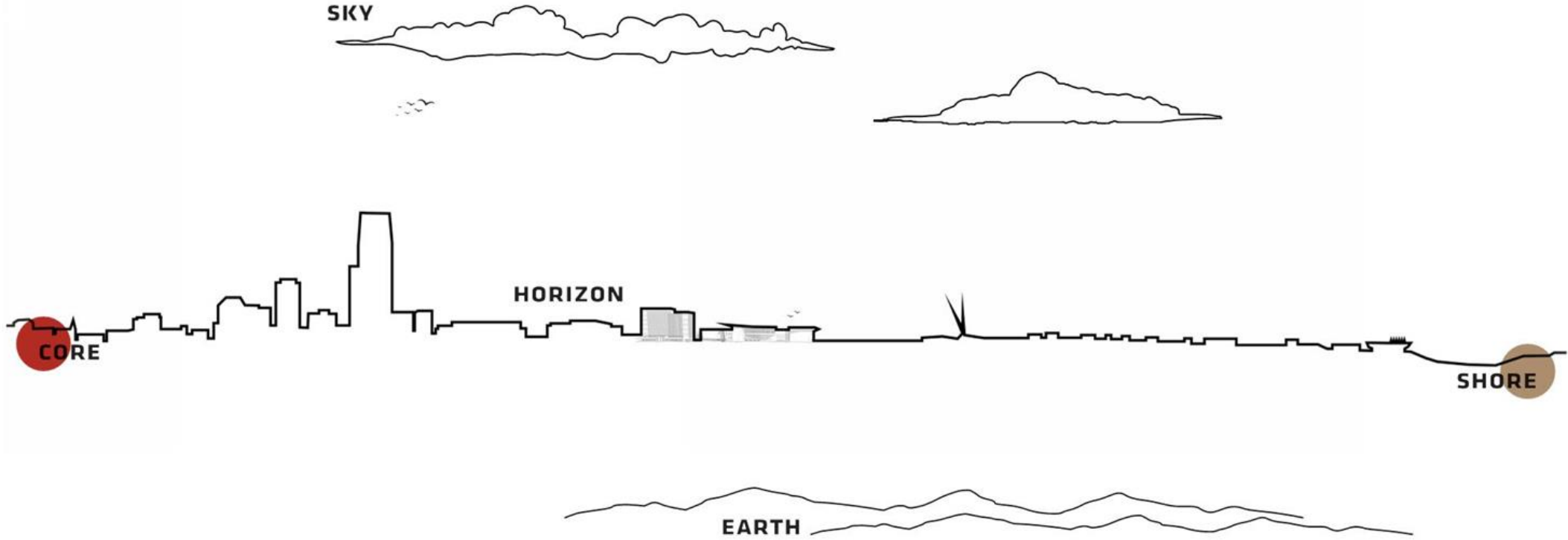
REFERENCE PLAN

/ UPPER BALLROOM LEVEL

- PREFUNCTION
- REGISTRATION
- MEETING SPACE
- EXHIBITION SPACE
- BALLROOM
- FOOD SERVICE
- HOSPITALITY
- ADMINISTRATION
- VERTICAL CIRCULATION
- RESTROOM
- SUPPORT
- MEP
- LOADING



DESIGN STORY



DESIGN STORY



CORE TO SHORE



FORM INSPIRATION

*Images shown on this page as design reference only



*Images shown on this page as design reference only

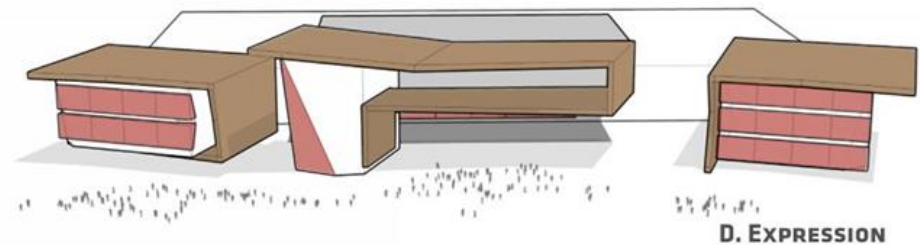
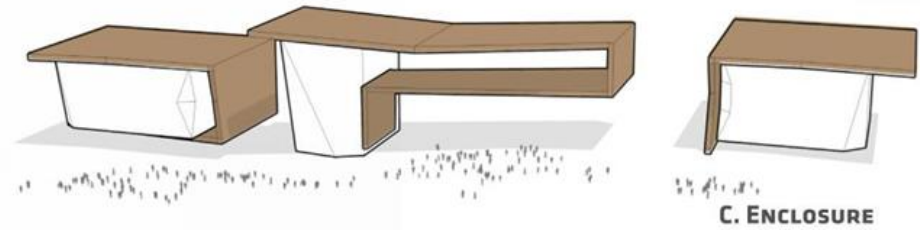
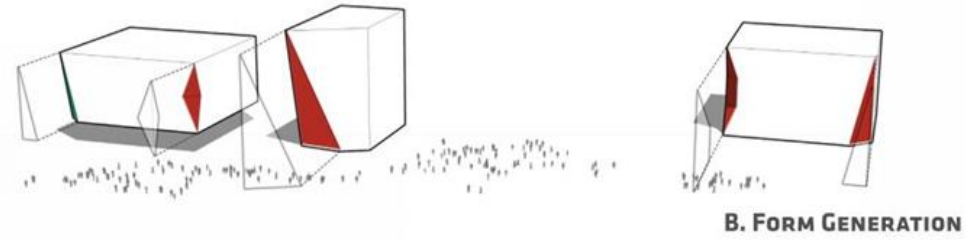
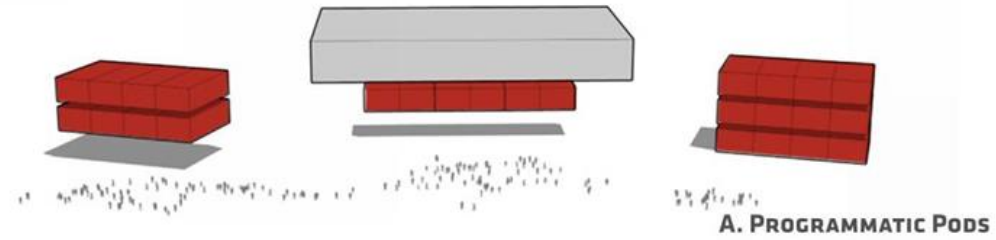


CORE TO SHORE / EARTH TO SKY

The new Oklahoma City Convention Center truly sits at the heart of the wonderful core to shore development area. The building is a bridge that connects the downtown aesthetic to the organic nature of the river. A familiar palette pays tribute to the history of the region while also creating a forward thinking progressive design. Reflections off of the glazing further unite the connection to the earth and sky by providing beautiful reflections of the surrounding park scape and the vast horizons of the Oklahoma sky. Deep architectural forms modulate light to create intimate experiences for guests while framing vast exterior views toward the city. The building uses the earth as a solid base to thrust the form into the horizon. Meeting rooms align with the tree tops of the new downtown park allowing for expansive views over the canopy. The painted sky bleeds into the ballroom, creating an experience utilizing shadow and light like no other. This relationship between natural beauty and urban development constructs a grand vision for the new Oklahoma City Convention Center.



EARTH TO SKY



FORM FOLLOWS FUNCTION

It was important to the design team throughout the process to let the building form respond to the programmatic layout of the spaces. Each neighborhood of the program was placed to express a unique form, yet still relate to one another. After this language was established between the forms, an architectural enclosure was applied to unite each area and to further protect the building from varying levels of exposure on the site. The final expression is a unity of the two, simply tying the overall functionality of the building into the completed aesthetic.

EXTERIOR VIEW



EXTERIOR VIEW - ROBINSON AVENUE

EXTERIOR VIEW



EXTERIOR VIEW - DOWNTOWN PARK

POPULOUS GSB, INC. maps 3

EXTERIOR VIEW



EXTERIOR VIEW - DOWNTOWN PARK

EXTERIOR VIEW



EXTERIOR VIEW - ROBINSON AVENUE - NORTH

EXTERIOR VIEW



EXTERIOR VIEW - ROBINSON AVENUE - NORTH

EXTERIOR VIEW



EXTERIOR VIEW - ROBINSON AVENUE - SOUTH

EXTERIOR VIEW



EXTERIOR VIEW - ROBINSON AVENUE - SOUTH

EXTERIOR VIEW



EXTERIOR VIEW - SHEILDS AVE.

EXTERIOR VIEW



EXTERIOR VIEW - DISTRICT AERIAL

POPULOUS GSB, INC.



EXTERIOR PANORAMA



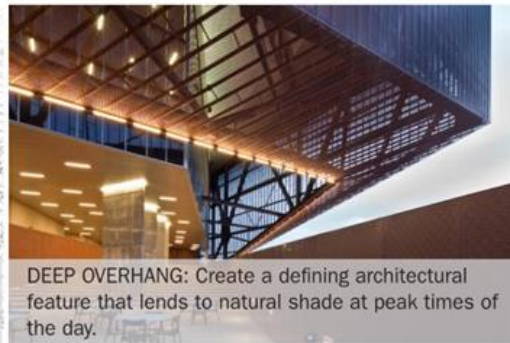
EXTERIOR VIEW - DOWNTOWN PANORAMA

EXTERIOR PERFORMANCE

*Images shown on this page as design reference only



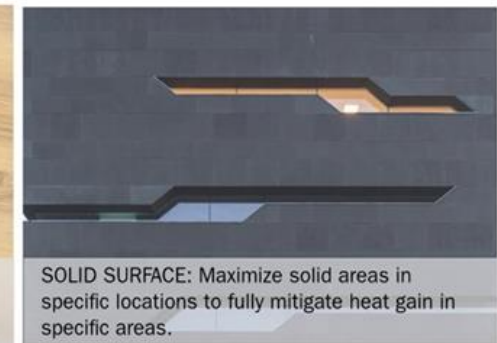
SLIGHT NORTHWEST ORIENTATION: Utilize a slight northwest orientation to incorporate natural shading and ambient northern light.



DEEP OVERHANG: Create a defining architectural feature that lends to natural shade at peak times of the day.



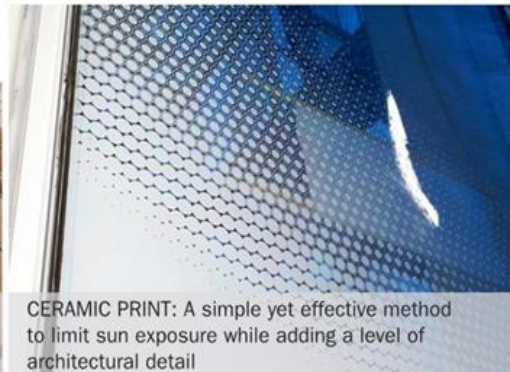
LOW "E" GLASS: Incorporate a highly functional glass to block harmful Infrared and UV rays while allowing visible light to pass.



SOLID SURFACE: Maximize solid areas in specific locations to fully mitigate heat gain in specific areas.



SHADING MECHANISMS: Addition of shading mechanisms to protect areas of highest exposure.



CERAMIC PRINT: A simple yet effective method to limit sun exposure while adding a level of architectural detail

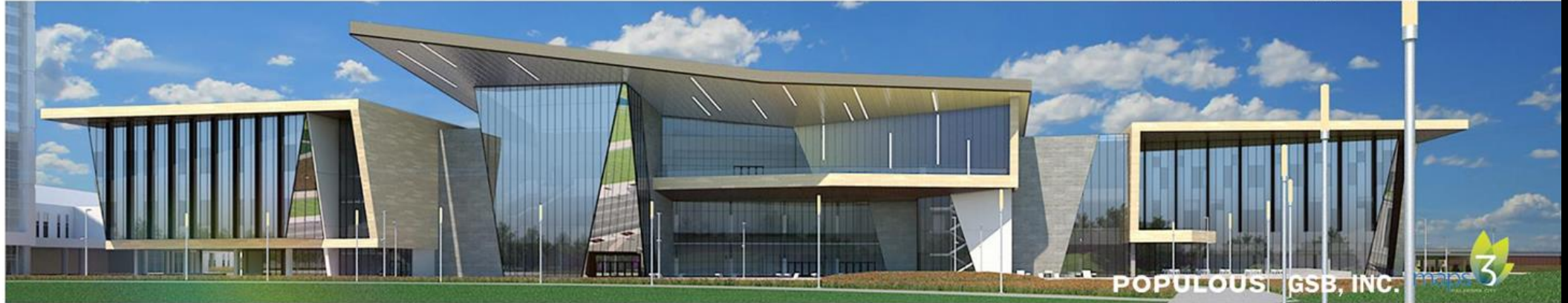


TREES AND LANDSCAPE: A thoughtful landscape design provides protection at the ground level creating shaded areas at the pedestrian level.

By incorporating a combination of the following measures, we can confidently control the level of exposure on the building facade to create a highly functional, protective, and architecturally pleasing design.

EXTERIOR MATERIALS

*Images shown on this page as design reference only



Terracotta Rain Screen System



Exterior Wood Veneer System



High Performance Glazing



Textured Concrete



Textured Plaster



Insulated Metal Panel



Stainless Steel or Zinc Metal Panel

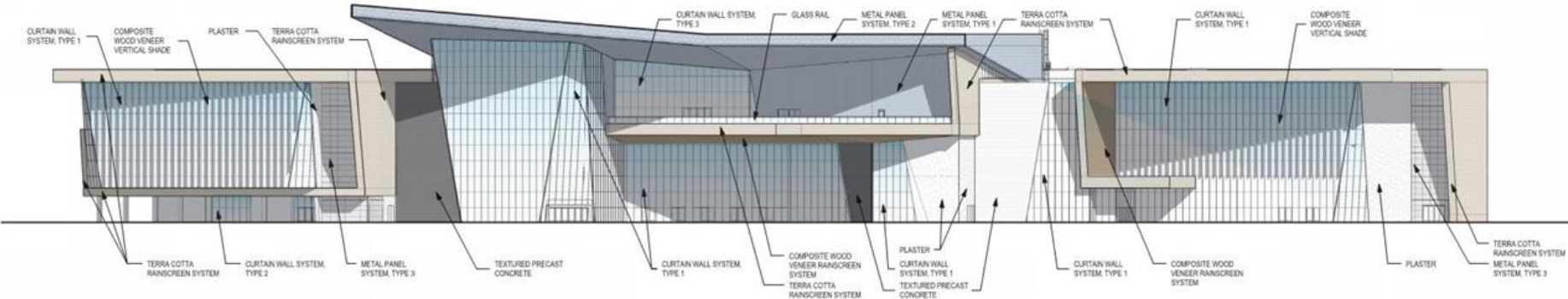


Perforated Metal Screen System

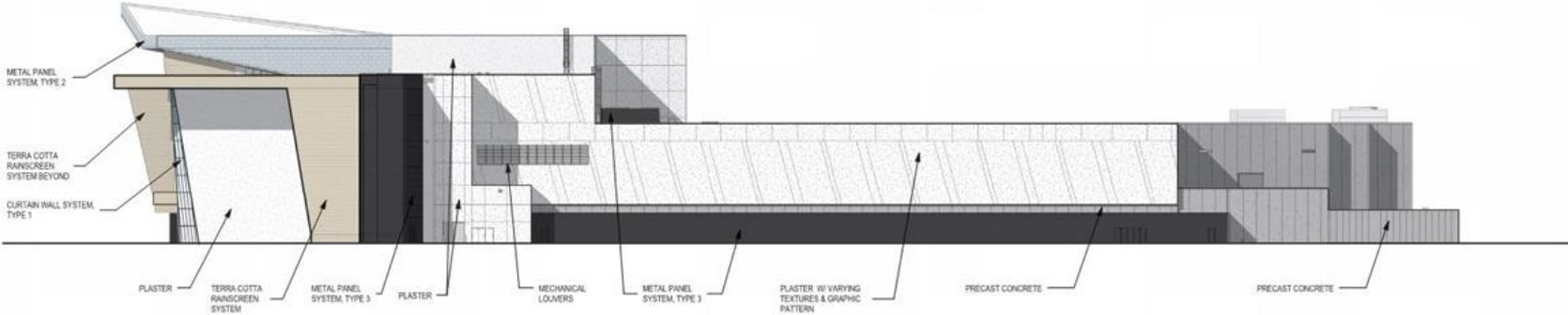


Each material has been well thought out regarding its relationship to the design, durability, maintenance, quality and the way it fits into the context of Oklahoma City. Samples and installations of key materials were presented to our MAPS 3 team and the sub-committee driving the design process.

EXTERIOR ELEVATIONS

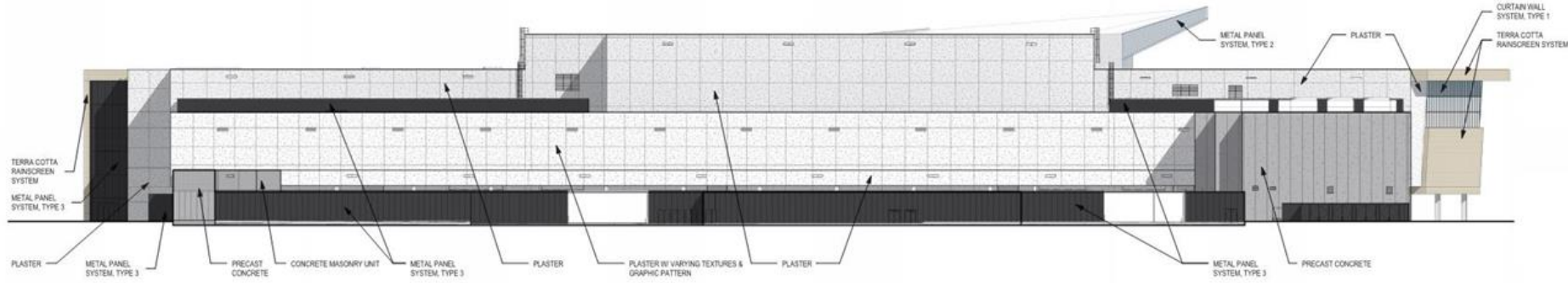


WEST ELEVATION

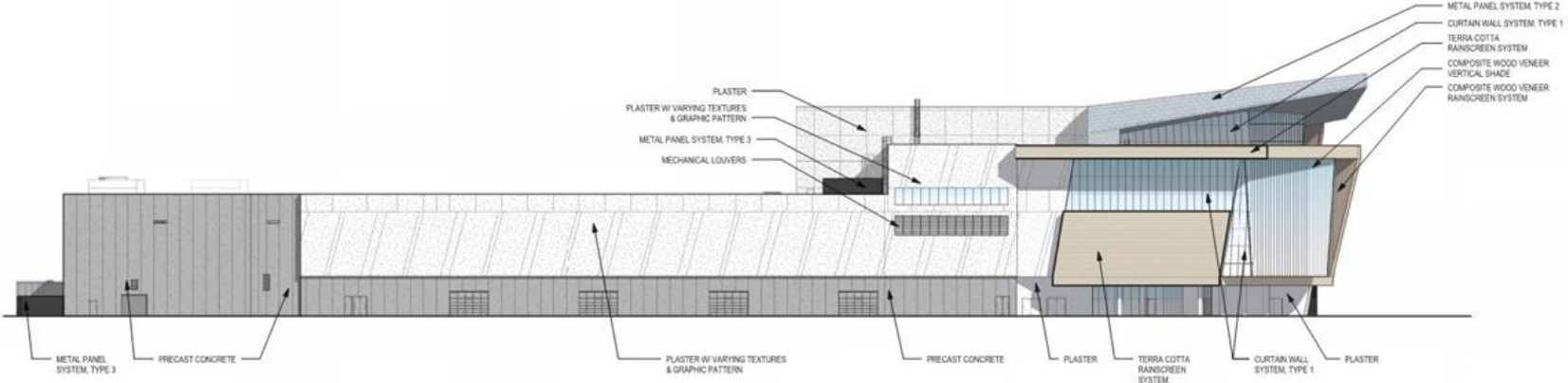


SOUTH ELEVATION

EXTERIOR ELEVATIONS



EAST ELEVATION

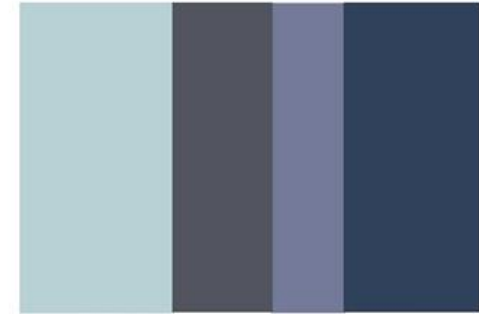


NORTH ELEVATION

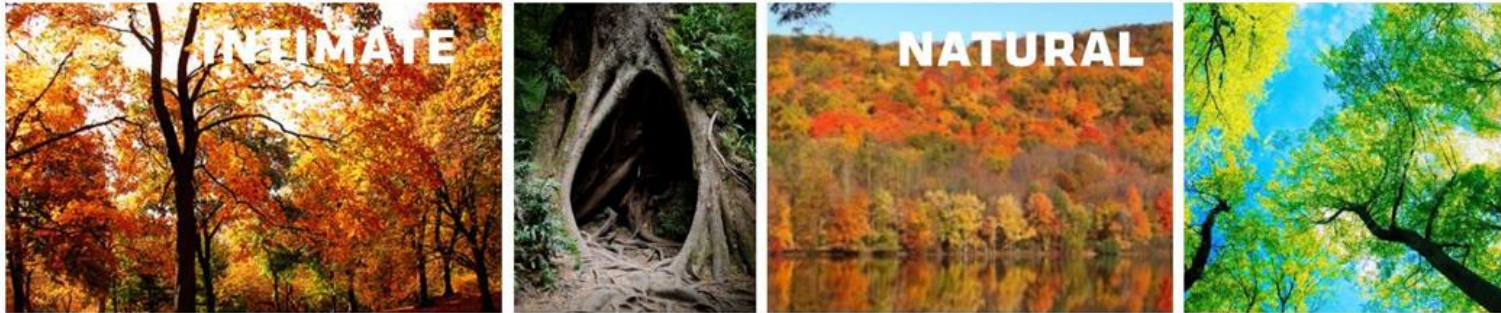
INTERIOR INSPIRATION



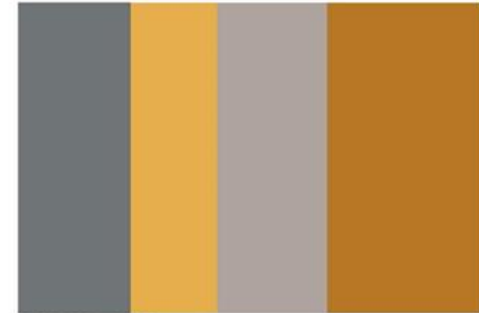
SKY



KEY COLORS



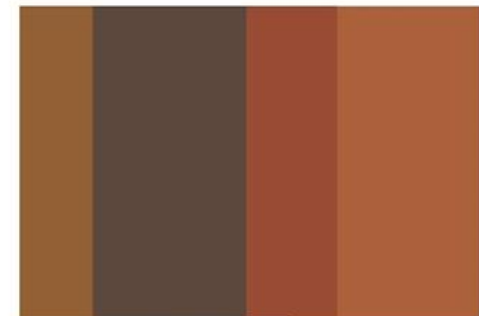
HORIZON



KEY COLORS



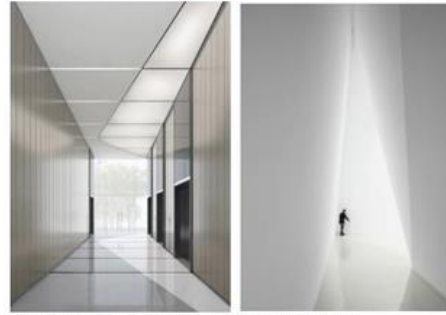
EARTH



KEY COLORS



METALLIC, REFLECTIVE SURFACES



NATURAL LIGHT AND SHADOWS



MOVEMENT IN DESIGN FEATURES



WARM, RICH WOOD TONES



WRAPPING PLANES



INTIMATE LOUNGE AREAS



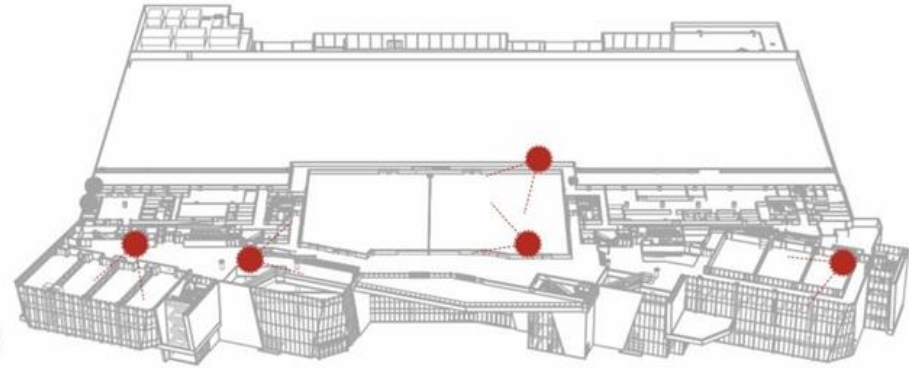
TACTILE, STACKED STONE TEXTURES



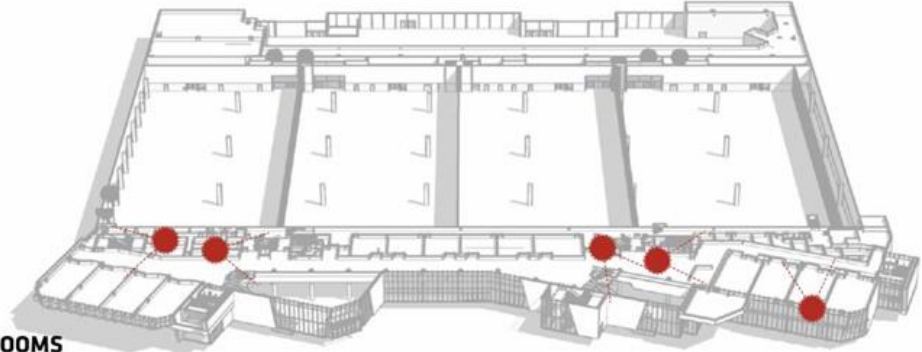
SPECIALTY MEETING SPACES



CARVED FORMS



**LEVEL 3/4 - MEETING/
BALLROOM**



LEVEL 2 - MEETING ROOMS



LEVEL 1 - EXHIBIT HALL

INTERIOR PALLETE

EARTH



Exhibit Hall Entry

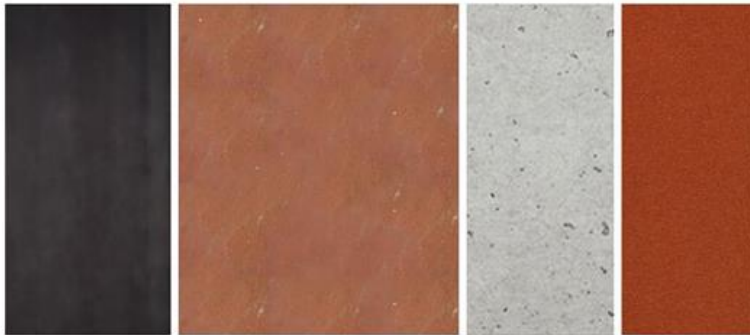


EXHIBIT HALL LEVEL:
Warm, textural materials in rich shades of orange and red are a nod to Oklahoma's unique red dirt. Materials at this level are rough and honed, relating to the natural textures found below grade.

HORIZON



Meeting Room Entry



MEETING ROOM MEZZ:
Wood planks highlight the tree canopy in the adjacent park while golden tones emulate the warm light behind them at the horizon line. Materials are subtly textured and soft in color.

SKY



Ballroom Meeting Room Entry



BALLROOM LEVEL:
Metallic, reflective finishes are used in combination with soft color changing lights to create movement across surfaces. These finishes are the most polished and refined in the interior palette.

INTERIOR VIEW



ACOUSTICAL PLASTER



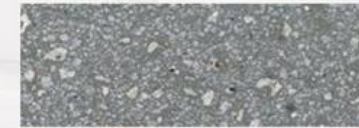
TEXTURED
CONCRETE PANEL



BUTT-GLAZED GLASS
STOREFRONT



PAINTED GYPSUM BOARD



CEMENTITIOUS TERRAZZO



CUSTOM COLOR
BROADLOOM CARPET

POPULOUS

G.S.B., INC.



INTERIOR VIEW - NORTH PREFUNCTION

INTERIOR VIEW



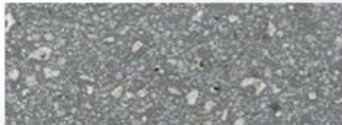
PERFORATED METAL CEILING



**TEXTURED
CONCRETE PANEL**



PAINTED GYPSUM BOARD



CEMENTITIOUS TERRAZZO



**CUSTOM COLOR
BROADLOOM CARPET**

POPULOUS

ESB, INC.



INTERIOR VIEW - NORTH ATRIUM

INTERIOR VIEW



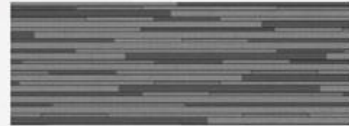
ACOUSTICAL PLASTER



TEXTURED
CONCRETE PANEL



RECLAIMED WOOD PLANK



DIMENSIONAL FELT PANELS



PAINTED GYPSUM BOARD



CUSTOM COLOR BROADLOOM
CARPET

POPULOUS

GSB, INC.

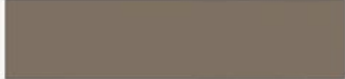


INTERIOR VIEW - MEETING ROOM PREFUNCTION

INTERIOR VIEW



ACOUSTICAL PLASTER



PAINTED GYPSUM BOARD



PORCELAIN TILE



WOOD PLANK

BUTT-GLAZED GLASS
STOREFRONT



CUSTOM COLOR
BROADLOOM CARPET

POPULOUS GSB, INC. maps 3 ENGINEERS LLP

INTERIOR VIEW - SOUTH PREFUNCTION

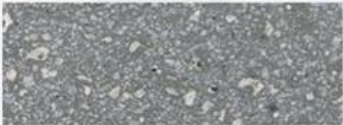
INTERIOR VIEW



**TEXTURED
CONCRETE PANEL**



**CUSTOM COLOR
BROADLOOM CARPET**



CEMENTITIUS TERRAZZO

INTERIOR VIEW - SOUTH ATRIUM

INTERIOR VIEW



INTERIOR VIEW - MEETING ROOM MEZZANINE

INTERIOR VIEW



2 X 6 ACOUSTICAL CEILING TILE



PAINTED GYPSUM BOARD

EXTERIOR CURTAINWALL WITH BLACKOUT SHADES



ACOUSTICAL WALL PANELS



CUSTOM COLOR BROADLOOM CARPET

POPULOUS

GSB, INC.



INTERIOR VIEW - MEETING ROOM

INTERIOR VIEW



INTERIOR VIEW - MEETING ROOM

INTERIOR VIEW



PAINTED GYPSUM BOARD

LINEAR METAL CEILING

PAINTED GYPSUM BOARD
EXTERIOR CURTAINWALL WITH
BLACKOUT SHADES

ACOUSTICAL WALL PANELS

CUSTOM COLOR
BROADLOOM CARPET

POPULOUS

GSB, INC. maps 3

INTERIOR VIEW - JUNIOR BALLROOM

INTERIOR VIEW



PERFORATED METAL CEILING



TEXTURED CONCRETE PANEL



WALLCOVERING



PAINTED GYPSUM BOARD



**CUSTOM COLOR
BROADLOOM CARPET**

POPULOUS

GSB, INC.



INTERIOR VIEW - BALLROOM PREFUNCTION

INTERIOR VIEW



PERFORATED METAL CEILING

VERTICAL-LIFT OPERABLE WALL



ACOUSTICAL WALL PANELS



TEXTURED CONCRETE PANEL



CUSTOM COLOR BROADLOOM CARPET

POPULOUS

GSB, INC.



INTERIOR VIEW - BALLROOM

INTERIOR VIEW



PERFORATED METAL CEILING



WALLCOVERING



ACOUSTICAL WALL PANELS



CUSTOM COLOR
BROADLOOM CARPET

POPULOUS

GSB, INC.



INTERIOR VIEW - BALLROOM

AMENDMENTS / CENTRAL UTILITY PLANT

- A.** Direction to proceed with expansion of the CUP area to accommodate future Mechanical, Electrical and Plumbing equipment to supply the Chesapeake Arena building.
- B.** Design to rebuild 6th Street from Robinson Avenue to the new Broadway Avenue location.
- C.** Design of 4th Street Plaza from Robinson Avenue to the new Broadway Avenue location.
- D.** New surface parking lot located between 6th Street, 7th Street, Robinson Avenue and Broadway Avenue in a new alignment with that of Broadway between SW. 4th and SW. 6th Streets. This will also include the redesign of Broadway Avenue in its new location moving east.
- E.** Regional Traffic Study

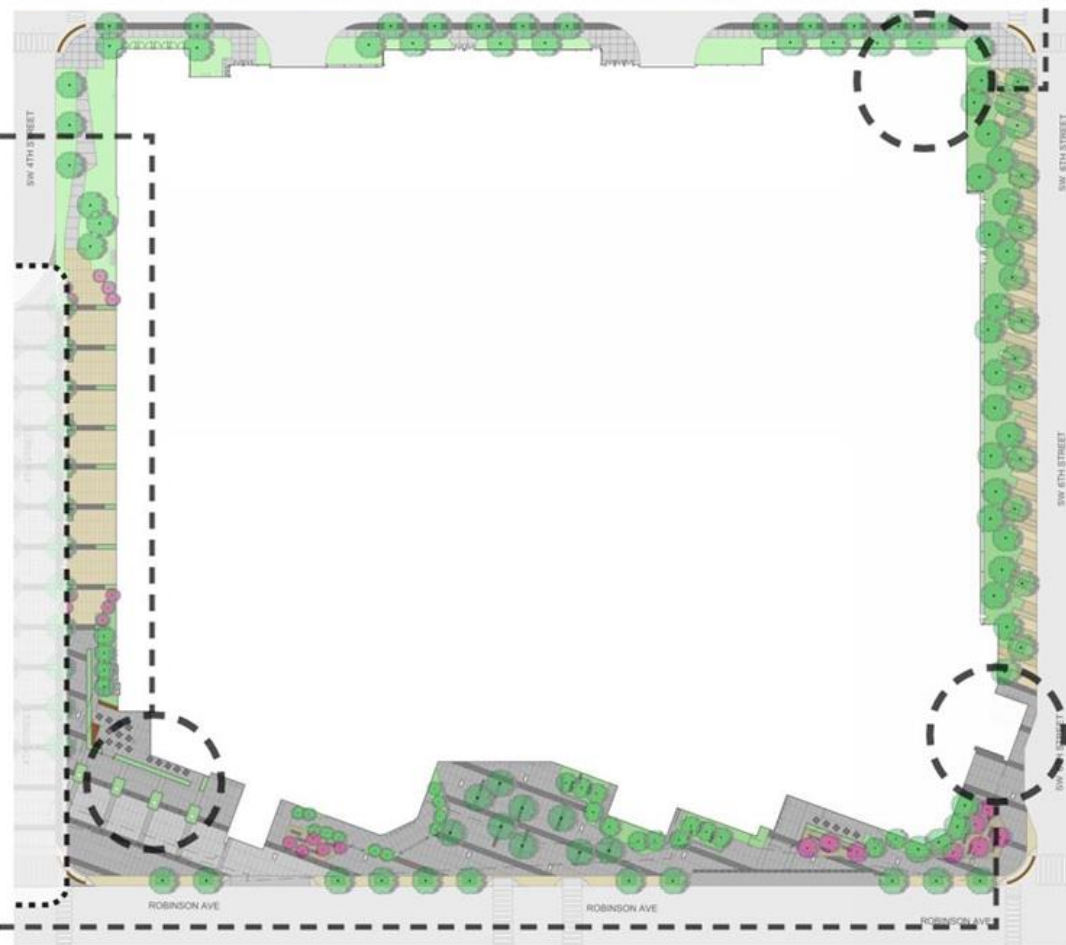
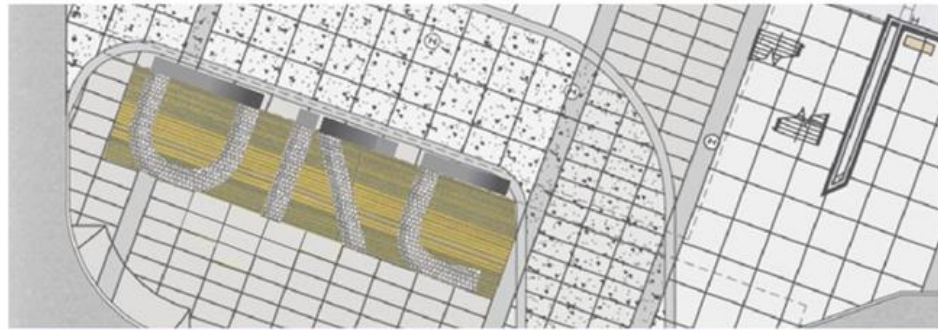
CENTRAL UTILITY PLANT STUDY (CUP)

The city directed Populous and the convention center design team to study central plant utility options. The report was provided to the city and reviewed. Direction was given to Populous, based on the information provided in the comparisons of the report, to proceed with a new central utility plant within the convention center. This new CUP will provide equipment to serve the new convention center only. Additional space will be provided in the design to accommodate the equipment required to serve the Chesapeake Arena from this location in the future (equipment will NOT be purchased at this time). Additional space will also be provided to account for a future expansion of the new convention center

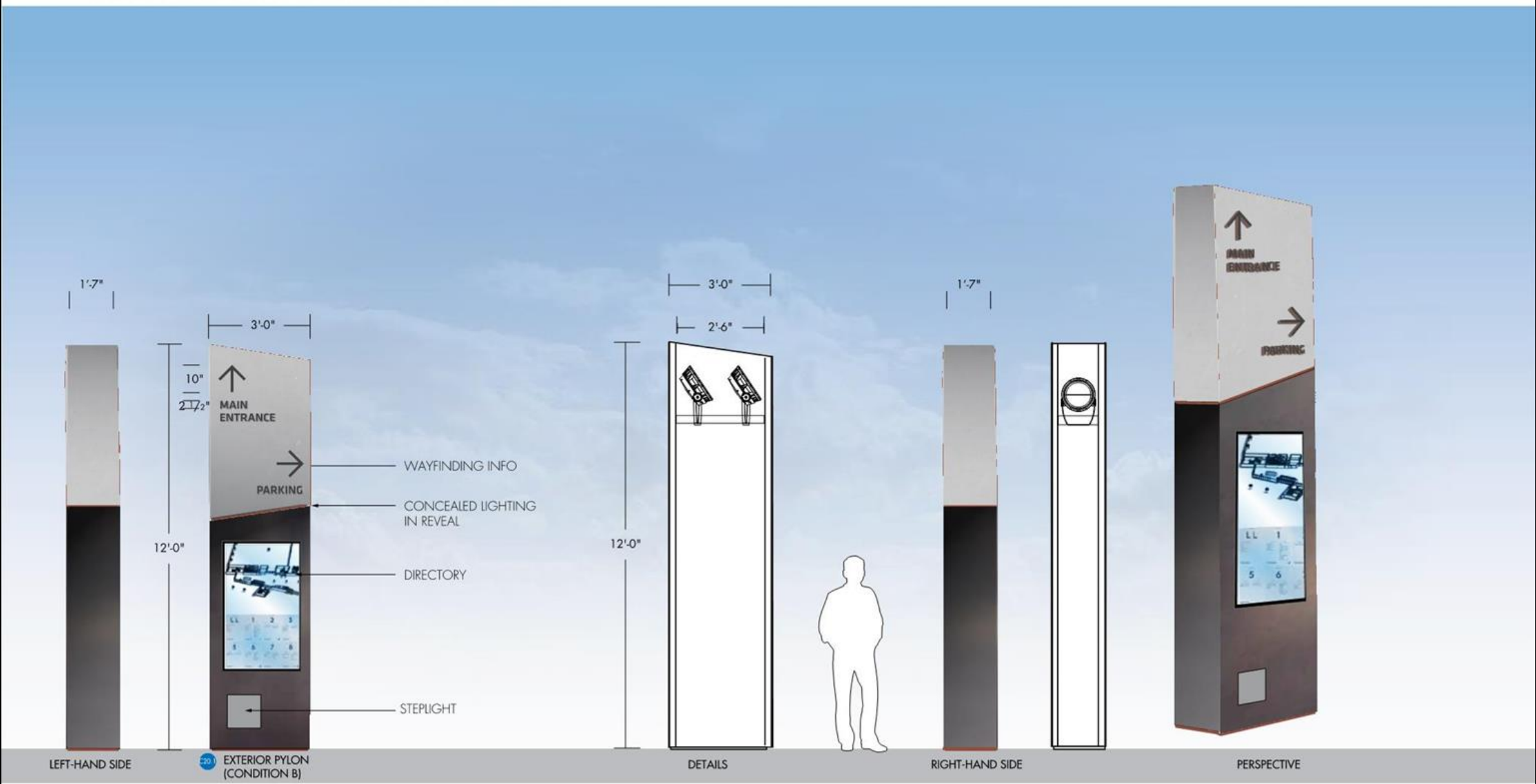


_ **KEY** BUILDING SIGNAGE AND WAYFINDING

BUILDING IDENTIFICATION



EXTERIOR WAYFINDING



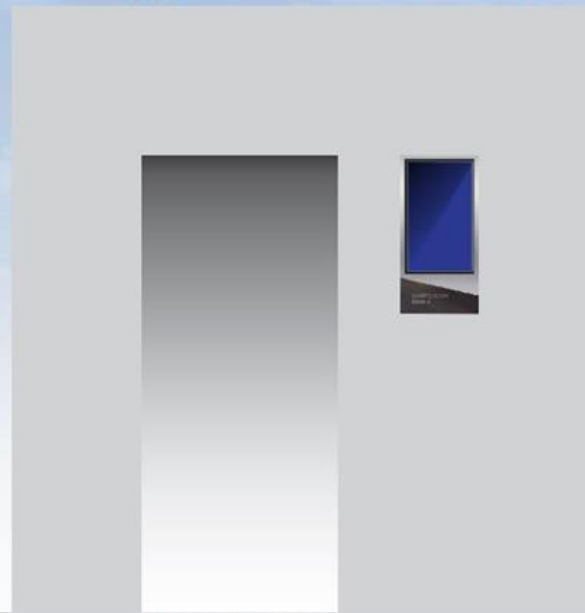
DIGITAL MEETING ROOM ENTRY



DETAIL



SIDE



A12 MEETING ROOM IDENTITY
- DIGITAL DISPLAY

GENERAL NOTES

1. 1'-4"W x 2'-6"H, 3" DEEP, FABRICATED SIGN CABINET W/ DUAL MATERIAL FINISH

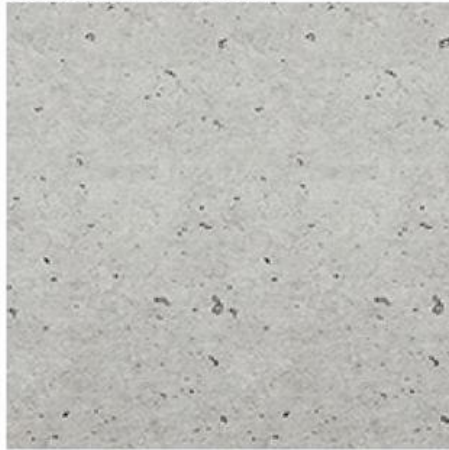
BRUSHED METAL SIGN CABINET W/ INTEGRATED TOUCH SCREEN DIGITAL DISPLAY & HOTROLLED STEEL FINISH. FABRICATE & FINISH SIGN INTEGRATING FACET DETAIL FOR A SEAMLESS APPEARANCE. PROVIDE RAISED TEXT & BRAILLE.

2. MECHANICALLY ATTACH ENTIRE SIGN TO ARCHITECTURE.

3. SIGN REQUIRES POWER & DATA.

INTERIOR WAYFINDING - INTERACTIVE

CONCRETE - OPTION 2



HOT ROLLED STEEL



SW 7598
SIERRA REDWOOD



GENERAL NOTES

1. 3'-0"W x 12'-0"H, 9"DEEP, FABRICATED SIGN CABINET W/ DUAL MATERIAL FINISH

SIGN HEADER TO FEATURE SPECIALTY MATERIAL & FINISH; COORDINATED W/ INTERIOR DESIGN PALETTE W/ 1/4"THK DIMENSIONAL LETTERS

SIGN BASE TO FEATURE HOTROLLED STEEL W/ CLEAR COAT FINISH, INTEGRATED TOUCH SCREEN DIGITAL DISPLAY

INTEGRATED REVEAL TO FEATURE HIGHLIGHT COLOR OR ILLUMINATION

2. SIGN IS DOUBLE SIDED.

3. MECHANICALLY ATTACH ENTIRE SIGN TO ARCHITECTURE. PROVIDE & ENGINEER FOUNDATION AS NECESSARY.

4. SIGN REQUIRES POWER & DATA.

INTERIOR WAYFINDING - INTERACTIVE

WOOD



HOT ROLLED STEEL



SW 6375
HONEYCOMB



GENERAL NOTES

1. 3'-0"W x 12'-0"H, 9"DEEP, FABRICATED SIGN CABINET W/ DUAL MATERIAL FINISH

SIGN HEADER TO FEATURE SPECIALTY MATERIAL & FINISH; COORDINATED W/ INTERIOR DESIGN PALETTE W/ 1/4"THK DIMENSIONAL LETTERS

SIGN BASE TO FEATURE HOTROLLED STEEL W/ CLEAR COAT FINISH, INTEGRATED TOUCH SCREEN DIGITAL DISPLAY

INTEGRATED REVEAL TO FEATURE HIGHLIGHT COLOR OR ILLUMINATION

2. SIGN IS DOUBLE SIDED.

3. MECHANICALLY ATTACH ENTIRE SIGN TO ARCHITECTURE. PROVIDE & ENGINEER FOUNDATION AS NECESSARY.

4. SIGN REQUIRES POWER & DATA.

INTERIOR WAYFINDING - INTERACTIVE

BACK PAINTED GLASS



HOT ROLLED STEEL



GENERAL NOTES

1. 3'-0"W x 12'-0"H, 9"DEEP, FABRICATED SIGN CABINET W/ DUAL MATERIAL FINISH

SIGN HEADER TO FEATURE SPECIALTY MATERIAL & FINISH; COORDINATED W/ INTERIOR DESIGN PALETTE W/ 1/4"THK DIMENSIONAL LETTERS

SIGN BASE TO FEATURE HOTROLLED STEEL W/ CLEAR COAT FINISH, INTEGRATED TOUCH SCREEN DIGITAL DISPLAY

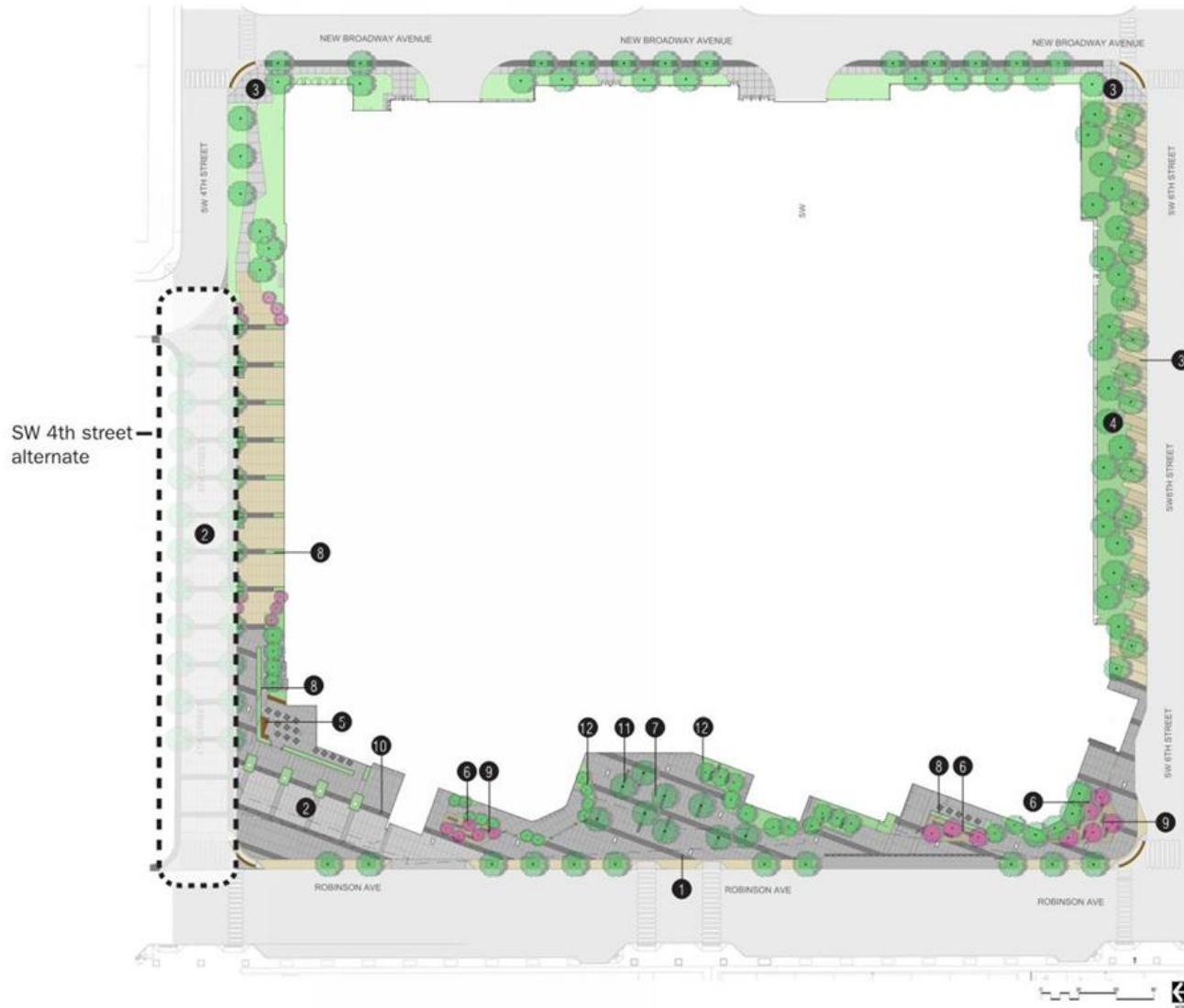
INTEGRATED REVEAL TO FEATURE HIGHLIGHT COLOR OR ILLUMINATION

2. SIGN IS DOUBLE SIDED.
3. MECHANICALLY ATTACH ENTIRE SIGN TO ARCHITECTURE. PROVIDE & ENGINEER FOUNDATION AS NECESSARY.
4. SIGN REQUIRES POWER & DATA.



_ LANDSCAPE AND SITE DESIGN

LANDSCAPE SITE PLAN



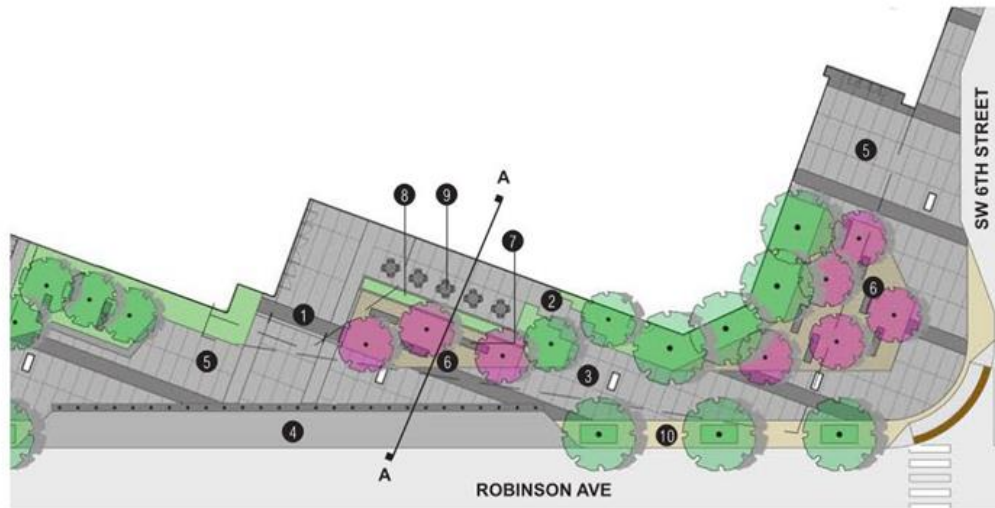
LEGEND

- 1 concrete unit pavers (pedestrian)
large format pavers nominal dimensions of 12 x 24 x 2 1/2, 6 x 24 x 4 and 24 x 48 x 2 1/2 pedestrian rated. pavers to be on 4" concrete base and 4" graded aggregate base. 50% blended finishes
- 2 concrete unit pavers (vehicular)
plank style pavers nominal dimensions of 3 x 9 x 4 high to moderate vehicular rated. pavers to be on 4" concrete base and 4" graded aggregate base.
- 3 concrete pavement
on grade cast-in-place concrete with integral color, architectural score joints 1/4" wide, broom finish. concrete to be reinforced 5" thick with 4" aggregate base.
- 4 woodland area
linear binds of woodland planting.
- 5 platform benches
cumaro hardwood raised platform benches, concrete base. 18" Ht.
- 6 decomposed granite
6" depth 3/8" or smaller compacted decomposed granite
- 7 custom benches
combination of wood and steel. 2'x8'x18"
- 8 raised planters
combination of reinforced precast concrete and metal planters. varying heights of 12", 24", and 36".
- 9 stone beams
natural cut limestone blocks. 18"x18"x8".
- 10 standard bollards/removable bollards
all bollards to be stainless steel 6" diameter 36" height with concrete footings
- 11 custom tree grates
tree grates shall be custom linear 2'x12' metal
- 12 cast-in-place seat walls
cast-in-place 18" tall seat walls with hardwood built in seating. walls to be varying lengths

OVERALL LANDSCAPE SITE



SOUTH ENTRY/ ENLARGED



LEGEND

- | | | |
|---------------------------------------|---|---------------------------|
| ① (2) steps | ⑤ concrete pavers | ⑨ tables and chairs |
| ② handicap ramp under 5% slope | ⑥ granite chips | ⑩ typ. streetscape layout |
| ③ light pylons (by lighting designer) | ⑦ stone seating | |
| ④ vehicular drop-off | ⑧ precast conc. raised planter (board form) | |



STONE BEAM SEATING

*building shown for reference



SOUTH ENTRY DROP-OFF



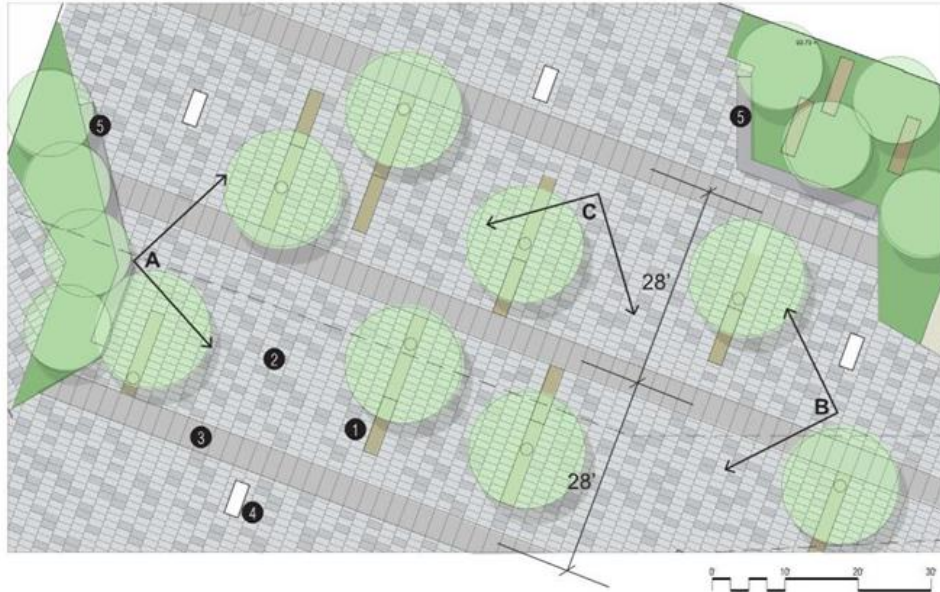
SOUTH ENTRY OUTDOOR SEATING



SECTION AA

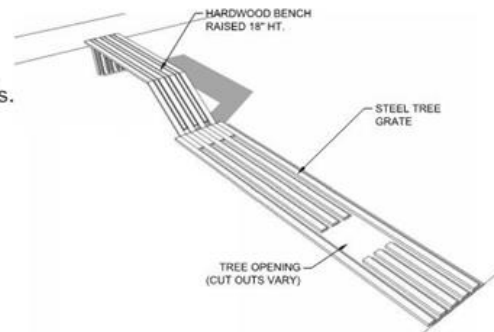
CENTRAL ENTRY PLAZA/ ENLARGED

*building shown for reference



LEGEND

- ① 2'x12' metal tree grate with integrated 8' hardwood seating bench
- ② 12"x24"x2-1/2" charcoal conc. paver. color to be blended. pavers to be on conc. base
- ③ 24"x48"x2-1/2" charcoal conc. paver bands. pavers to be on concrete base
- ④ light pylons (by lighting designer)
- ⑤ hardwood seating bench, 18" ht.



METAL TREE GRATE WITH BENCH



VIEW A



VIEW B

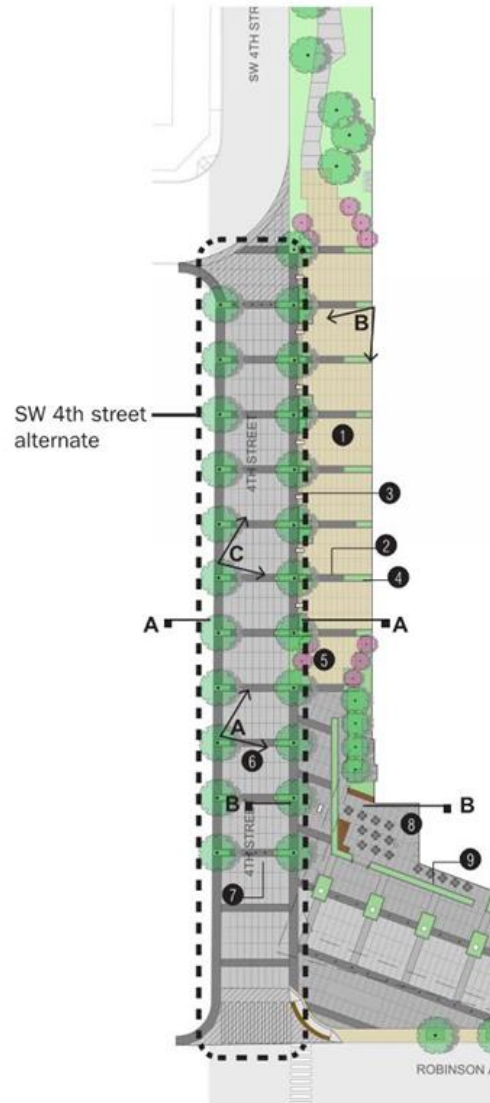


VIEW C

SW 4TH STREET/ ENLARGED

LEGEND

- ① 12" x 24" x 2-1/2" - tan concrete paver
- ② 12" x 24" x 2-1/2" - charcoal concrete paver
- ③ pylon
- ④ metal raised planters, 24" and 36" ht.
- ⑤ handicap accessible ramp
- ⑥ 3" x 9" x 4" vehicular rated conc. pavers
- ⑦ stainless steel bollards
- ⑧ outdoor seating area
- ⑨ precast conc. raised planted (board form)



VIEW A



MULTI-LEVEL PLANTERS- DESIGN REFERENCE ONLY



VIEW B

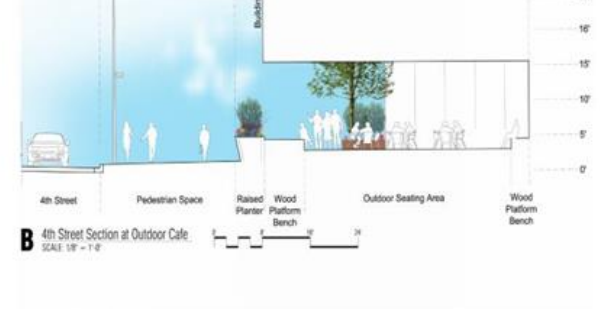


VIEW C

*building shown for reference

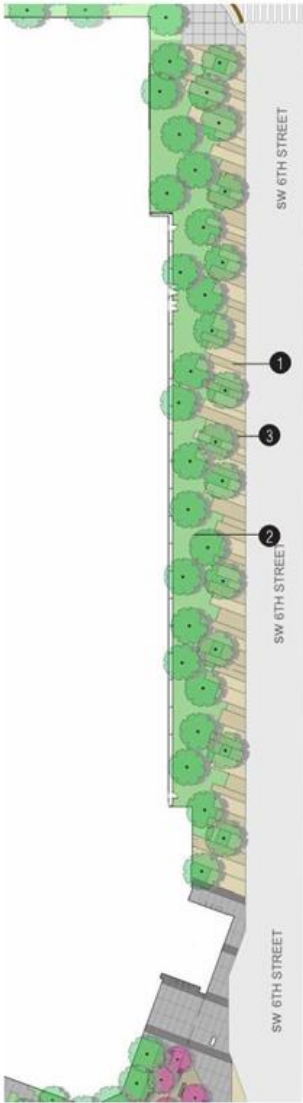


SECTION AA



SECTION BB

WOODLAND WALK SW 6TH STREET/ ENLARGED



LEGEND

- 1 natural conc.
- 2 linear woodland planting bands
- 3 typ. 30' roadway light

*building shown for reference



SITE AMENITIES AND URBAN ELEMENTS

* images for reference only



STAINLESS STEEL BOLLARDS



WOODEN PLATFORM BENCHES



UNDULATING BENCHES



MULTI-LEVEL PLANTERS

PLANT MATERIALS

The following pages include an illustrated plant material palette that serves as an inspiration for the Oklahoma City Convention Center. The palette includes an array of plant life possibilities that are suited for the Oklahoma climate. This palette is to be used as a guide to assist in the final plant selection for the project.

The plant material selected by the design team provides a naturalistic feel. The plantings will be placed in large swaths, grouped by similar texture and color characteristics. Un-natural leaf colors or forms in the planting scheme will be avoided. Selecting plants that are able to tolerate low light levels such as shade tolerant groundcovers are key since a majority of the areas receive a varying degree of shade most of the day.

Since the scale of the building is so large, no attempt is made to screen it but rather soften the edges of spaces and provide landscape character. For instance, the mounding of natural planting areas will help shape the spaces and direct the pedestrian flow.

To promote long term viability of the plant material the documents include a series of details and specifications tailored to the sites unique characteristics. The addition of subgrade planting systems, drainage, silva - cell, soil specifications, profiles, and irrigation have been developed and included in the plans.

EVERGREEN TREES



'BLUE ICE' ARIZONA CYPRESS



GANAERTI JUNIPER



LOBLOLLY PINE

LARGE SHADE TREES



BOSQUE LACEBARK ELM



LONDON PLANE TREE



BALD CYPRESS

MEDIUM SHADE TREES



SHUMARD OAK



'ALLEE' ELM



'CADDO' MAPLE

ORNAMENTAL TREES



'OKLAHOMA' REDBUD



'NATCHEZ' CRAPE MYRTLE



DESERT WILLOW

PLANT MATERIALS

GROUNDCOVERS



'CODY' BUFFALO GRASS



'COLORATUS' PURPLE WINTERC BEEFEATER



'ANGELINA' SEDUM



'BLUE PACIFIC' JUNIPER



'GRO-LOW' FRAGRANT SUMAC



'SAYBROOK GOLD' JUNIPER

SHRUBS



'WINTER GEM' BOXWOOD



'CHERRY QUEEN' AUTUMN SAGE



'CRIMSON CURLS' CORAL BELLS



'BRAKELIGHTS' RED YUCCA



'LITTLE SHIRE' RUSSIAN SAGE



MOONSHINE YARROW

ORNAMENTAL / NATIVE GRASSES



'BLONDE AMBITION' GRAMA GRASS



DWARF MONDO GRASS



HORSETAIL REED GRASS



'KARL FORESTER'



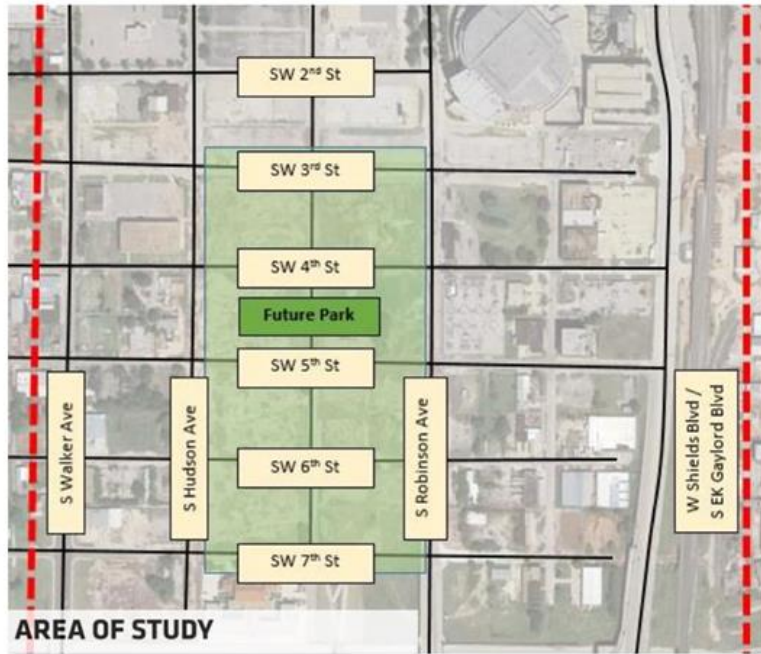
'PONYTAILS' MEXICAN FEATHER GRASS



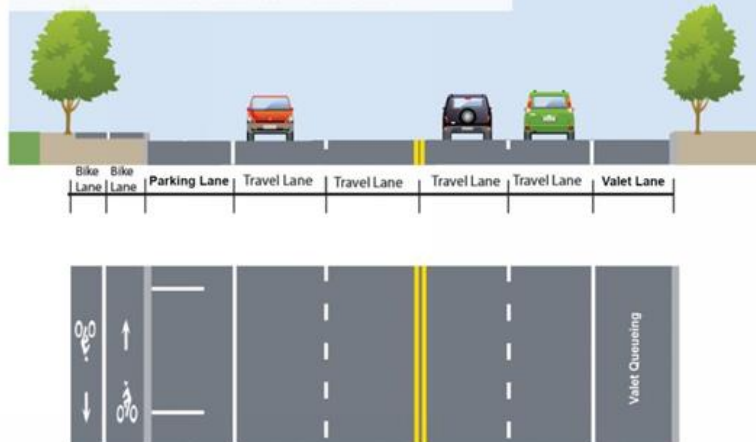
'ADAGIO' MAIDEN GRASS

_ VEHICLUAR CIRCULATION AND TRAFFIC FLOW

TRAFFIC ANALYSIS



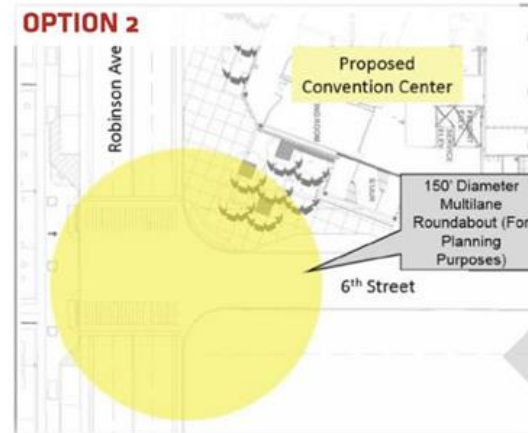
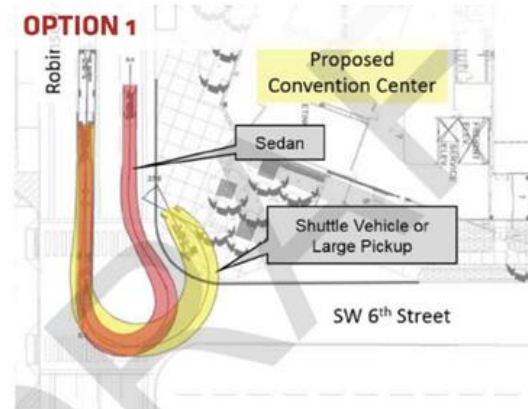
PREFERRED ROBINSON SECTION



OPTION 1 - Design Robinson Avenue at 6th Street or 7th Street to accommodate U-Turns at the intersection. The existing intersections are too narrow to accommodate u-turns for larger vehicles. Redesigning the intersection would provide larger curb radii to allow larger single passenger vehicles to make the u-turn movement more comfortably.

OPTION 2 - A roundabout at Robinson Avenue at SW 7th Street would provide an easy way for vehicles needing to perform a u-turn on Robinson. A roundabout would require additional ROW from either the west side of Robinson Avenue or the east side of Robinson Avenue to accommodate the roundabout. A circle documenting the approximate size of a multilane roundabout is shown on the next page.

OPTION 3 (PREFERRED OPTION) - Encourage the use of the 7th Street, Broadway Avenue, 6th Street u-turn route that circles the proposed surface parking. This may include a mix of permanent and temporary signage. This option is preferred due to increased storage length and safety of the movement.



_ COST ESTIMATE

BUILDING IDENTIFICATION

RLB | Rider Levett Bucknall
Oklahoma City Convention Center

Location	GFA SF	Cost/SF	Total Cost
B BUILDING	515,240	275.39	141,893,806
S SITE			10,357,638
ESTIMATED NET COST	515,240	\$295.50	\$152,251,444
MARGINS & ADJUSTMENTS			
General Conditions	7 %		\$10,657,601
Off-site Overhead (hard bid)	2.8 %		\$4,561,453
Bonds and Insurances	1.8 %		\$3,014,469
Sub-guard			Excl.
Construction Contingency	4 %		\$6,819,399
Estimating Contingency	2.5 %		\$4,432,610
Escalation to bid Sept 2017	4.5 %		\$8,178,471
SUB-TOTAL ESTIMATED CONSTRUCTION COST	515,240	\$73.10	\$37,664,003
Public Art			Excl.
FF&E			\$4,000,000
Testing & Inspections			Excl.
ESTIMATED TOTAL COST	515,240	\$376.36	\$193,915,447

_ ICC SYDNEY

ICC SYDNEY



ICC SYDNEY

