



# City Council Priority: **Continue to Pursue Social and Criminal Justice Initiatives**

## Police Department

City of Oklahoma City | August 29, 2017

# Continue to Pursue Social and Criminal Justice Initiatives



Progress Indicators

## Police Department

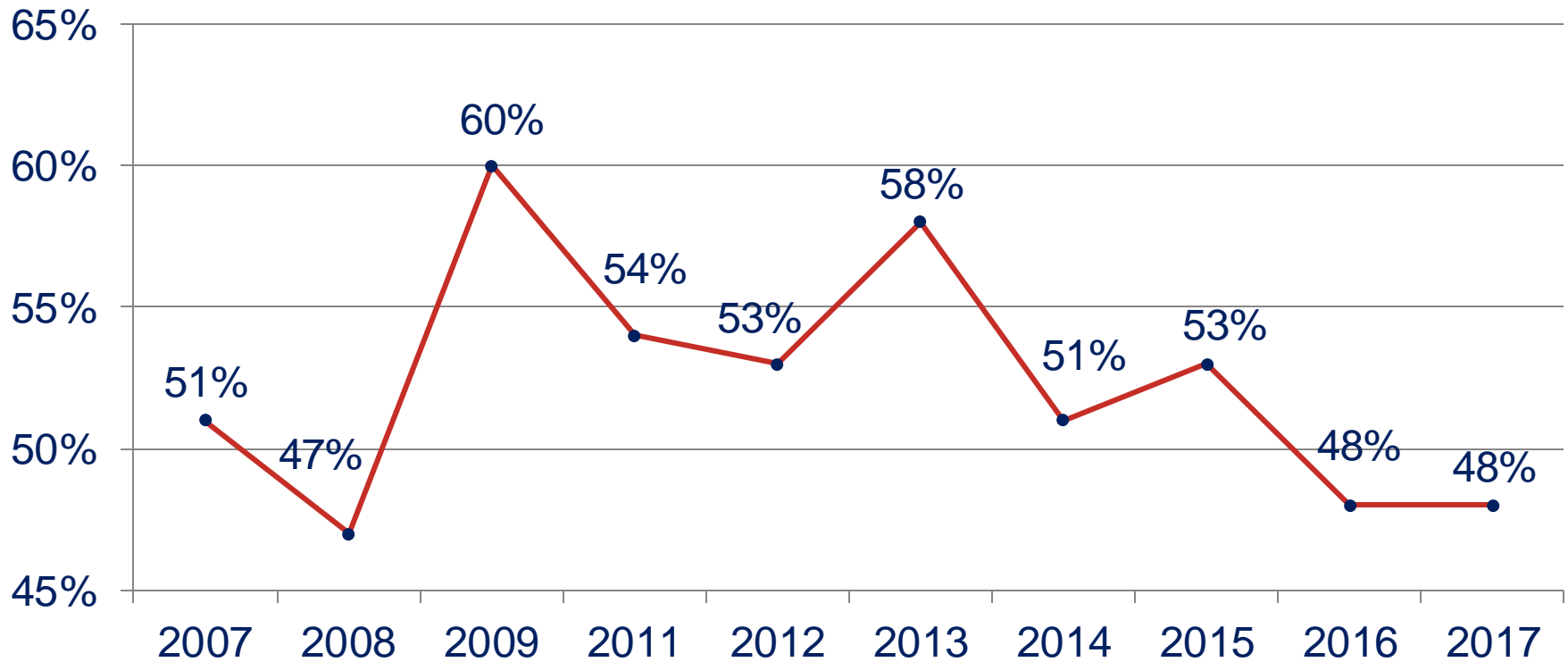
% of residents citywide reporting they feel safe

% of officers who have received procedural justice training

% change in the number of people incarcerated for municipal charges

# of prisoner days utilized by Oklahoma City at the OK County Jail

# % of residents citywide reporting they feel safe



2018 Target = 55%

Surveys Conducted By: ETC Institute

# Procedural Justice



**Procedural justice** is defined as the idea of fairness in the processes that resolve disputes and allocate resources. It is not a practice but a philosophy and a movement which promotes positive organizational change, upholds police legitimacy in the community, and enhances officer safety.

**Issue:** The continuing need to maintain and increase public trust, if not addressed, will result in:

- ❖ Negative public perception
- ❖ Decreased ability to recruit applicants
- ❖ Decreased citizen satisfaction and cooperation

# Procedural Justice Strategies



- ❖ Continue to review and revise policies and procedures
- ❖ Continue to participate in community outreach through community programs and partnerships
- ❖ Expand the concept of procedural justice to employees through recruit and in-service training
- ❖ Continue implementation of body-worn camera program

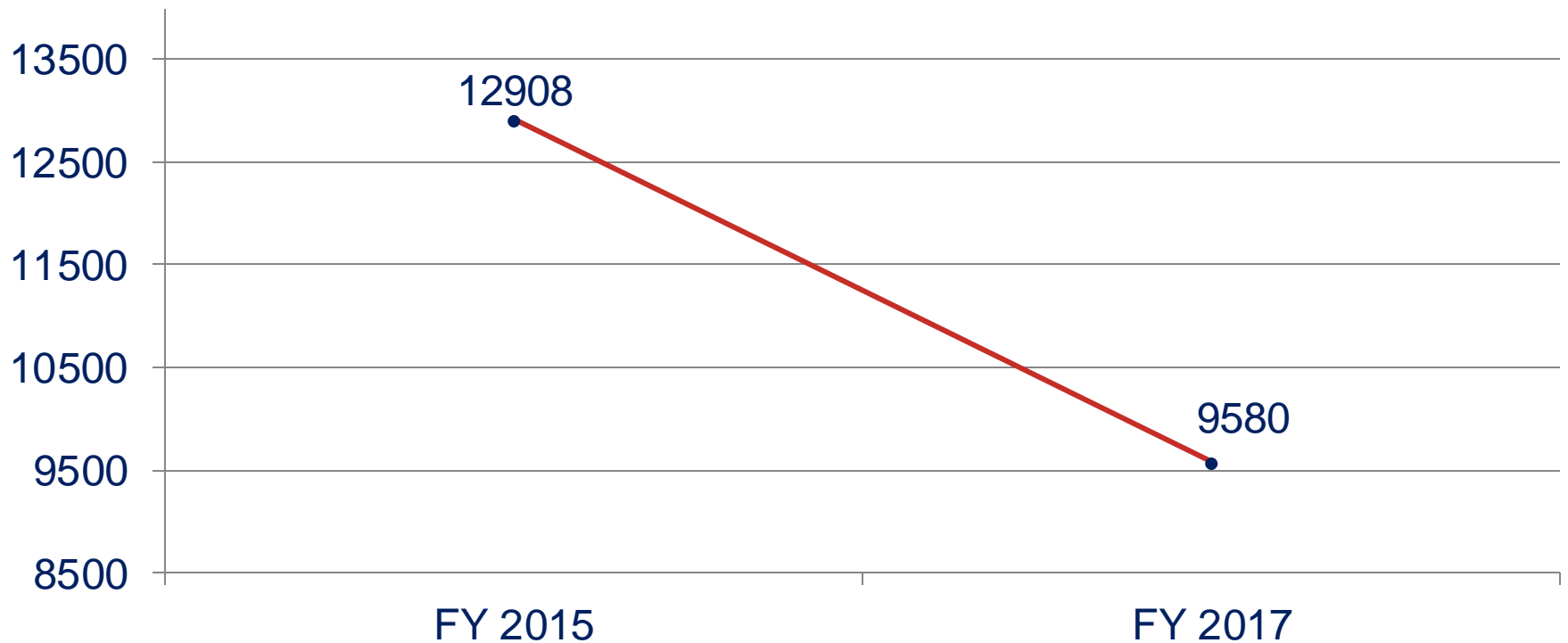
# Procedural Justice Initiatives



The Police Department has made significant progress with implementing and promoting procedural justice concepts.

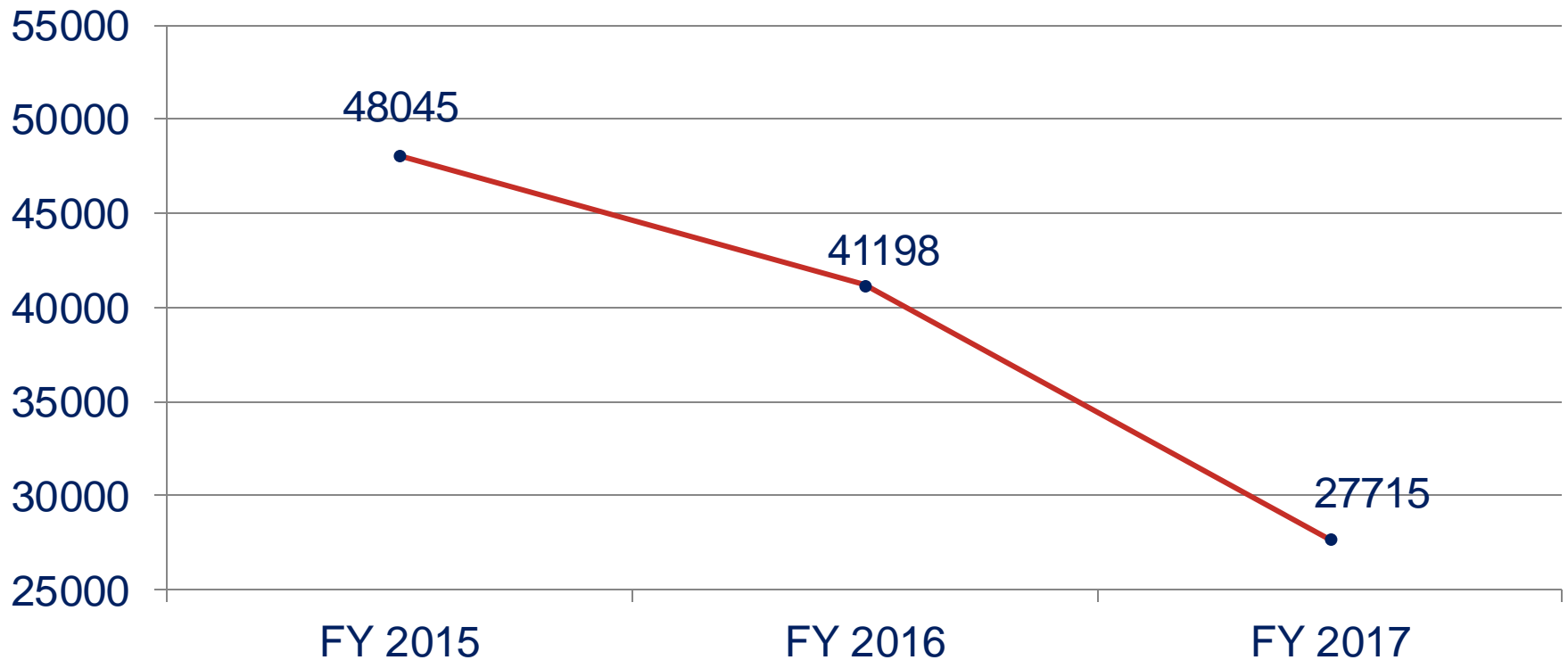
- ❖ Body-Worn Cameras
- ❖ Procedural Justice Policy
- ❖ De-Escalation Training
- ❖ Implementation of De-Escalation Procedure
- ❖ Training on Implicit Bias
- ❖ Increased Community Outreach
- ❖ All officers have received procedural justice training
- ❖ Coordinating with Courts to Address Justice Reform

# % change in the number of people incarcerated for municipal charges



From FY15 to FY17 there was a 26% drop in incarcerations.

# # of prisoner days utilized by Oklahoma City at the Oklahoma County Jail



From FY15 to FY 17 there was a 42% drop in prisoner days.



# Continue to Pursue Social and Criminal Justice Initiatives

Police Department



Questions?



# City Council Priority: **Continue to Pursue Social and Criminal Justice Initiatives**

Planning Department

City of Oklahoma City | August 29, 2017

# Continue to Pursue Social and Criminal Justice Initiatives



“All people deserve to be treated with dignity, fairness, and respect. Pursuit of these values provides unity within our community to move our City forward and place us at the forefront of communities which seek the betterment of all people. **We will ensure equitable justice through** continued criminal justice system reform and **increased engagement with residents and community groups. We will support our partners and promote access to social services that facilitate a better future for those in need.**”

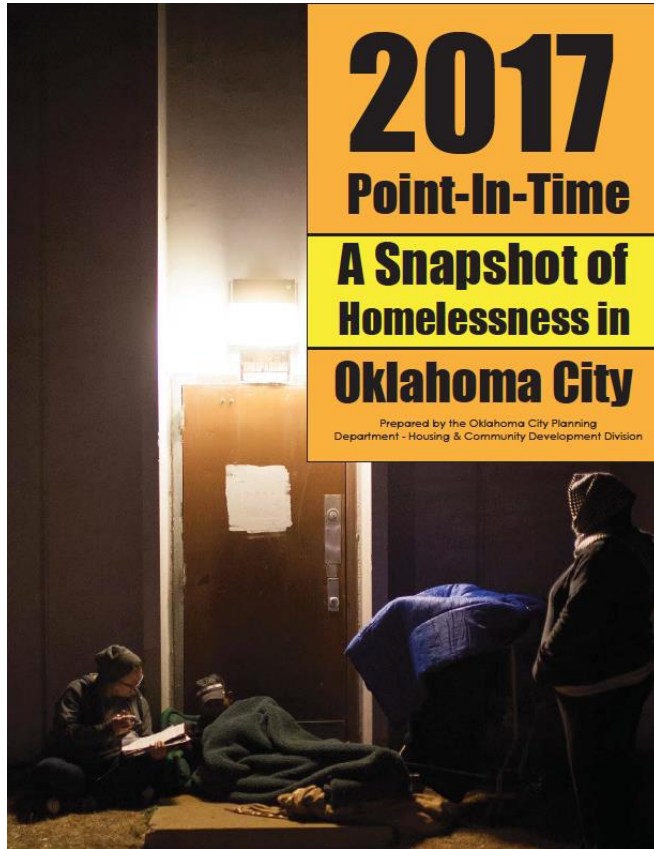
## Planning Department Indicators

# of homeless persons identified during the Point-In-Time Count

# of federally assisted affordable rental housing units

# Progress Indicator

## # of homeless persons identified during the Point-In-Time Count



- Done annually with the help of 30 partner agencies and volunteers
- 1 day count of those in emergency shelters, transitional housing, day shelters, meal sites, & street counts
- Provides information on demographics, health, and situation of homeless
- Helps us find most vulnerable and prioritize them for housing



# Point-In-Time Report Findings

## January 26, 2017 PIT Count:

- 1,368 / 268 unsheltered

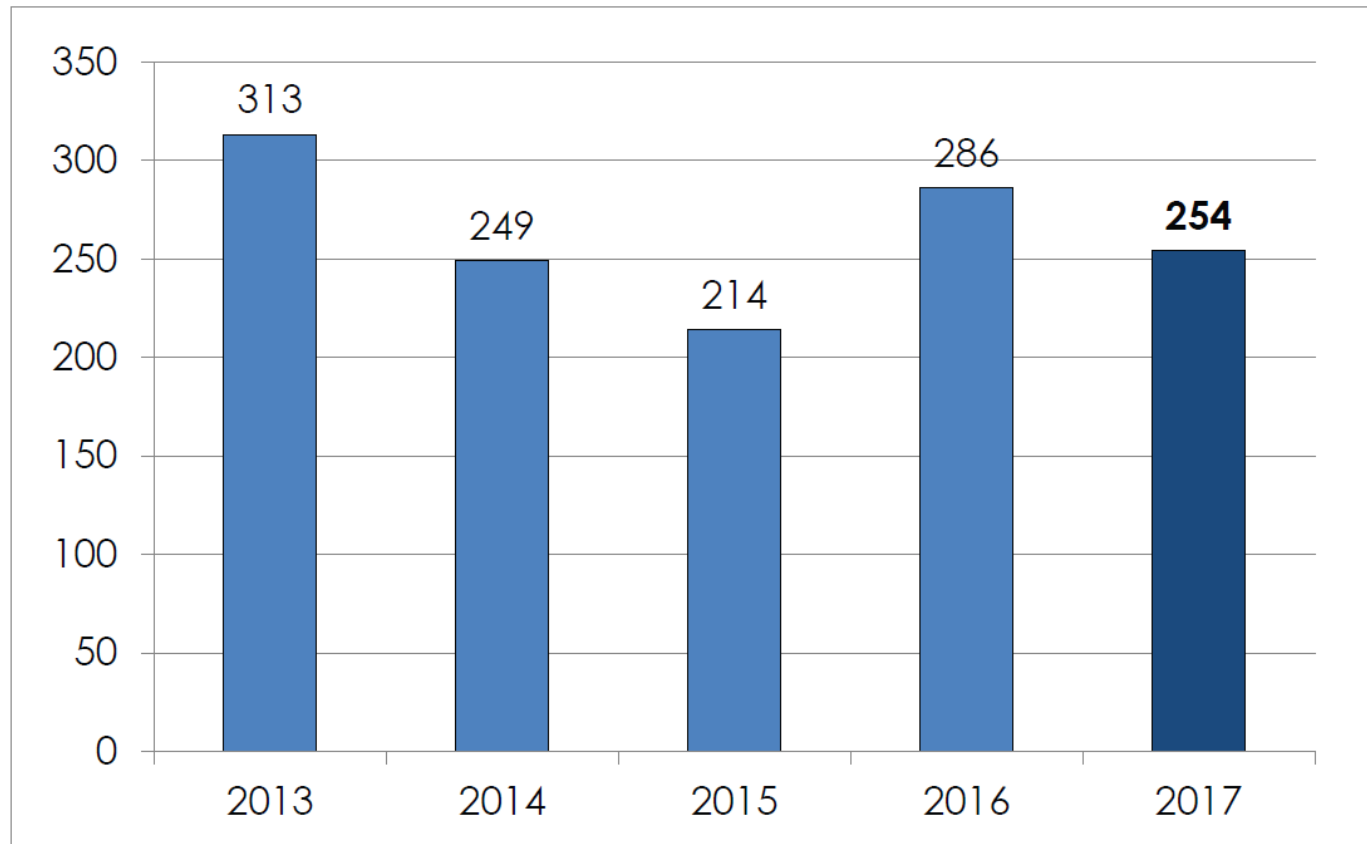
YEAR	SHELTER	TRANSITIONAL HOUSING	UNSHELTERED	TOTAL
2013	820	249	293	1,362
2014	1,029	194	258	1,481
2015	908	192	200	1,300
2016	963	241	307	1,511
2017	888	212	268	1,368



# Point-In-Time Report Findings

## January 26, 2017 PIT Count:

- 254 chronically homeless / 139 unsheltered



# “Real World” Estimates

- Point-in-time count is a snapshot in time.
- Estimate 4-5 times the one night count are homeless (5,472 - 6,840)
- Survey does not count people who are “couch homeless”
  - Estimated to be 5-10 times the “countable homeless”
  - 5,474 homeless children enrolled in the OKCPS in 2016-2017 school year
  - ~80% were couch homeless



# On-going challenges

- **Increasing family homelessness** trend w/ no increase in resources for families
- **> 5,000 youth “couch homeless”** last year; Federal homelessness resources can not address
- **Lack of mental health & substance abuse services** to reduce # of people entering homelessness with those issues
- Lack of **affordable housing**
- **Freeze/decrease of Section 8 vouchers** provided by the OKC Housing Authority





# How we help



## Funding agreements with 30 partner agencies that provide services & cooperate to coordinate care

Program	Allocation
Continuum of Care grants (2016-17)	\$3,507,180
ESG - Emergency Solutions Grants (2017-18)	\$393,035
HOPWA - Housing for Persons W/ Aids (2017-18)	\$620,252
City Social Services grants (2017-18)	\$121,000 (General Fund)
	<hr/> <b>\$4,641,467</b>

# How we help

## Continuum of Care Grant

- Permanent Supportive Housing w/ case management & support services
- Focus on Housing First approach
- Have added ~\$1 million in new funds over the last 5 years
- **Total number permanently housed (FY 16-17): 736**



# How we help

## ESG (Emergency Solutions Grants)

- Provide Rapid Re-housing & Homelessness Prevention services for families
  - Shelter
  - Outreach
  - Healthcare
  - Legal assistance
  - Employment training
- **Total number served (FY 16-17):**  
**4,367**



# How we help

## HOPWA (Housing for Persons With Aids)

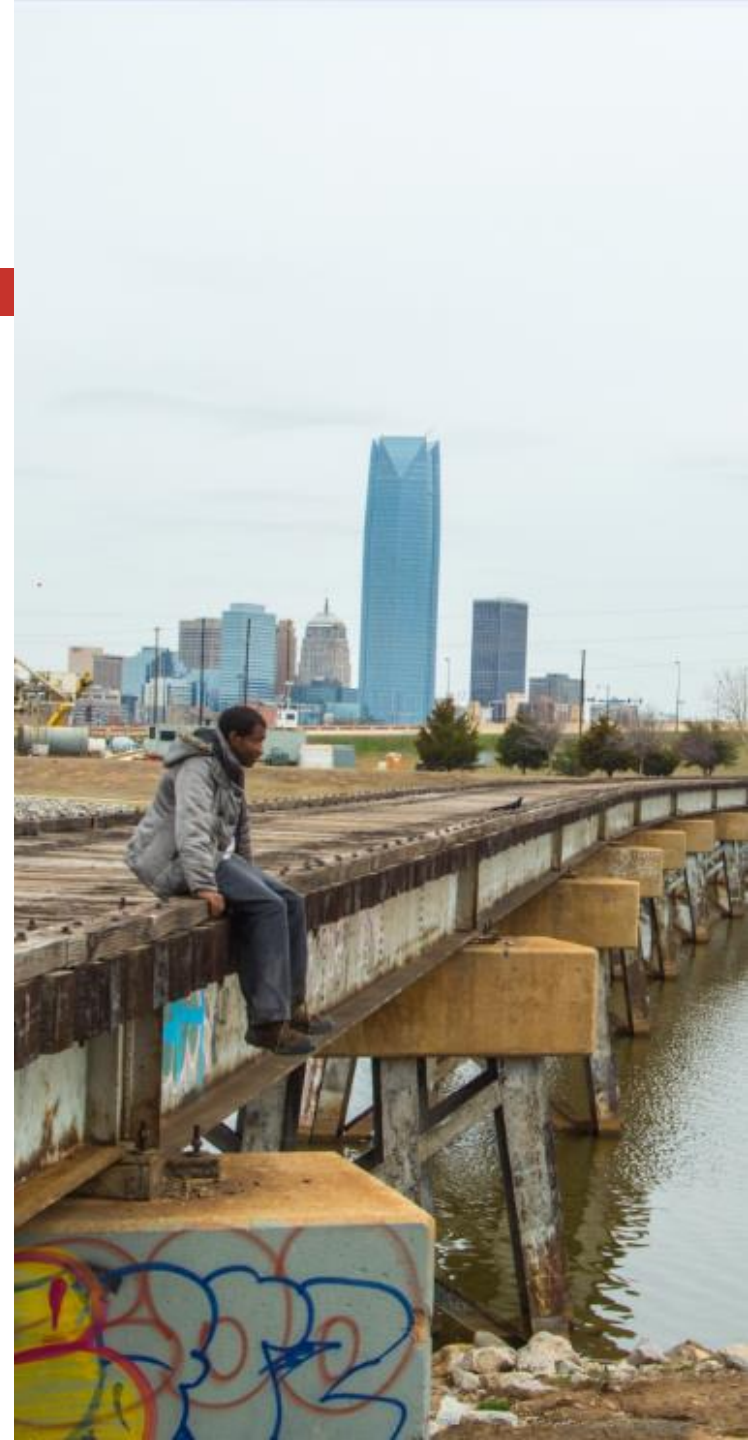
- Provide specialized housing & services for people with HIV or AIDS and their families
- **Total number served (FY 16-17):**  
**248**



# How we help

## City Social Services grants

- Provides supplemental funds/match to existing programs that allow them to be expanded
  - Outreach
  - Staffing costs and employment training
  - Legal Assistance
  - Health Care
  - Shelter costs



# New collaborative initiative

## Homelessness Program

- Helped develop the **Journey Home OKC Collaborative**
- Includes over 40 government, faith based and non-profit service providers
- Combines resources to address homelessness using a coordinated approach
- Since January 2015
  - Housed > 590 Veterans
  - 355 chronically homeless
  - ~90% retention rate



# Progress Indicator

## # of federally assisted affordable rental housing units



- **Source:** National Housing Preservation Database - collected & maintained by Public and Affordable Housing Research Corporation (PAHRC) and the National Low Income Housing Coalition (NLIHC).



# Federally Assisted Rental Units

**8,172 units \***

- Project Based Section 8
- Rental assistance payment
- Section 202 non-profit housing for very low income seniors
- Section 811 Housing for disabled
- Section 236 and 221(d) low interest loans to housing providers
- LIHTC- Low Income Housing Tax Credits
- HOME program
- Public Housing



**\* About half of these 8,172 units have subsidies that are expiring in the next decade and new units are not being built at the same replacement rate.**



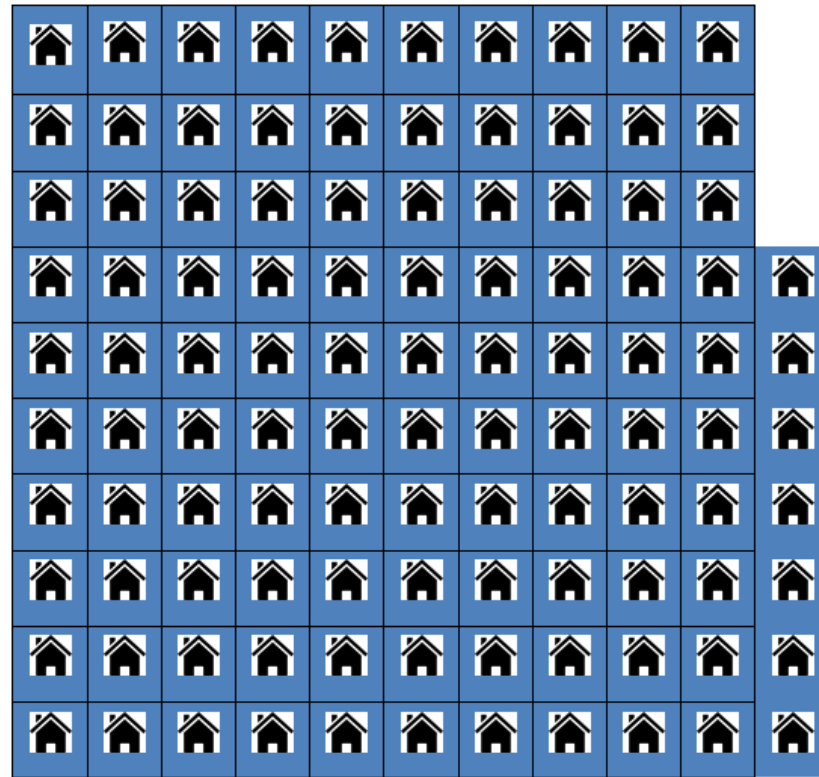


# Our Demand for Affordable Housing

## Oklahoma City Stats

- Total number of households: **237,213**
- Median household income: **\$49,119**
- **40% of our population** is at or below 80% AMI (Area Median Income)
- **Renters: 37%**
- Homeowners: 63%

## Affordable & available rental homes per 100 renter households



**38**

at 30% AMI  
“Very Low Income”

**63**

at 50% AMI  
“Low Income”

**107**

at 80% AMI  
“Moderate Income”

**Substandard housing conditions affect over 70% of low-moderate income renters**

# City Programs Supporting Affordable Housing



## CDBG & HOME funding

- Support some rental development & rehabs
- Ex: Steelyards, Meadowcliff Apts., Providence Apts., Temple Gardens Sr. Housing, Mt. Olive Cottages, etc.

## Also support **owner-occupied affordable housing** through City's Housing Rehabilitation programs & CHDOs

- Focus on owner-occupied homes vs. rentals
- CHDOS- Jefferson Park, Positively Paseo and NHS

**Annual impact:** improvements to and/or construction of **200-300 affordable housing units** each year

# Federal Housing Program \$ at Risk



- Federal funding for housing and social services continue to decline, but Oklahoma City's allocations remained steady this last year
- Proposals still active at federal level to eliminate CDBG & cut HUD resources by \$6B in 2018. House bill cuts HUD by \$1.5B
- Nationwide needed repairs to existing Public Housing are estimated at \$30B; current funding proposal is \$1.85B
- Proposed Section 8 Program funding levels may eliminate vouchers for up to 140,000 families

# Going Forward

- Affordable Housing Strategy under development
- 2017 General Obligation Limited Tax (GOLT) program will help support the mission





# City Council Priority: **Enhance Recreation Opportunities and Community Wellness**

# Enhance Recreation Opportunities and Community Wellness



*“Providing quality recreational opportunities, communicating more effectively with the public about the options available and working with our partners to promote healthy living are important for the wellbeing of our community. To provide convenient and attractive options for residents, our parks and recreation facilities will be well maintained and provide a wide variety of recreational offerings that appeal to all of our residents.” – City Council Priorities, November 2016*

# Priority Indicators

- % of citizens that report regular leisure time physical activity
- % of citizens within ½ mile of a recreation facility, trail or park
- % of citizens satisfied with maintenance of City parks
- % of citizens that report using an Oklahoma City park or attending a park program more than 10 times a year





**Measure:** % of citizens that report regular leisure time physical activity

2017 Survey

**41.4%**

of citizens participate in leisure time physical activity at least once per week

**Target = 70%**

Down 25.9 % from 2016 Survey





# Recreation Activities

Organized by the Parks & Recreation Department

Types of Participation	FY 16 Actual	FY 17 Actual	FY 18 Target
Athletics	6,829	11,583	13,750
Aquatics	374,843	340,246	411,736
Recreation Centers	129,038	163,194	170,000
Seniors	30,321	11,520	12,700



# New Wellness Programs

Sunrise Yoga at Will Rogers Gardens  
Yoga at Civic Center  
Fit for Youth Camp  
Fitness Rooms at Recreation Centers

Youth Golf Camp  
Aging Well Event at Will Rogers Park  
River Trail Relay with OKC Cycling Club  
Neighborhood Yoga with OKC Beautiful



*The way we do business*

# Parks & Recreation Partners

Provide 50,000+ annual participation opportunities



**Parks & Trails Foundation**

**Oklahoma Wellness Alliance**

**Boys and Girls Club**

**Fields & Futures**

**Metropolitan Library**

**National Fitness Campaign**

**Oklahoma Afterschool Network**

**Oklahoma City Public Schools**

**Police Athletic League**

**Regional Food Bank**

# Enhance Recreation Opportunities and Community Wellness



Measure: % of citizens within ½ mile of a recreation facility, trail, or park

65.3%

of citizens within a ½ mile of a recreation facility, trail, or park



# Enhance Recreation Opportunities and Community Wellness



Measure: % of citizens using a park or attending a park program more than 10 times a year

2017 Survey

26.2%

of citizens report that they used an Oklahoma City park or attended a park program more than 10 times a year in the past 12 months

Target = 30%



# Enhance Recreation Opportunities and Community Wellness



Measure: % of citizens satisfied with maintenance of city parks

2017 Survey

66.5%

of citizens satisfied with maintenance of city parks

Target = 75%



# Enhance Recreation Opportunities and Community Wellness

## *Parks and Recreation:* A TRUE HEALTH SOLUTION

Local park and recreation agencies provide health and wellness opportunities for all populations in communities across the country. As America continues to face serious health issues parks and recreation offer an affordable and accessible solution. Share with your communities the impact you are having on their health!

People who use parks and open spaces are **3 times more likely** to achieve the recommended levels of physical activity than nonusers!

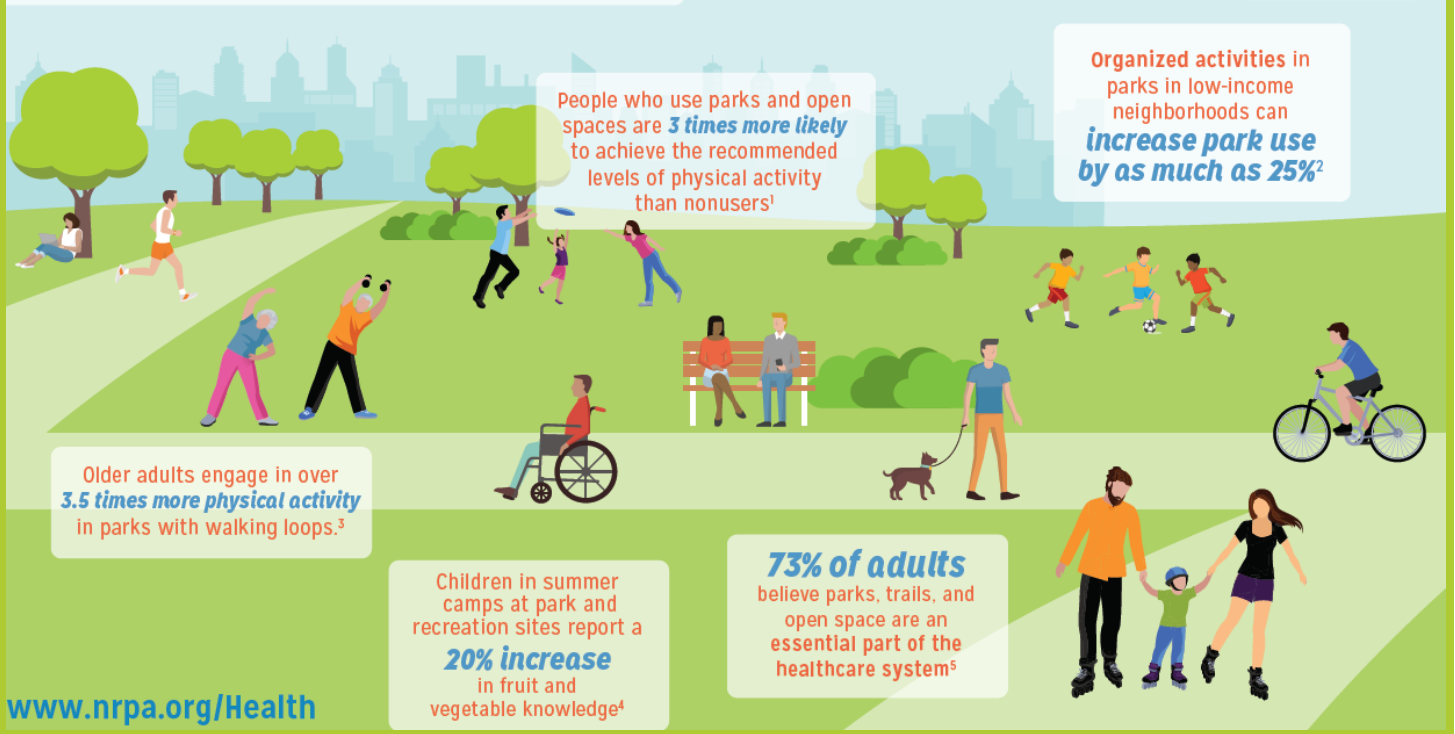
Organized activities in parks in low-income neighborhoods can **increase park use by as much as 25%<sup>2</sup>**

Older adults engage in over **3.5 times more physical activity** in parks with walking loops.<sup>3</sup>

Children in summer camps at park and recreation sites report a **20% increase** in fruit and vegetable knowledge<sup>4</sup>

**73% of adults** believe parks, trails, and open space are an essential part of the healthcare system<sup>5</sup>

[www.nrpa.org/Health](http://www.nrpa.org/Health)



*The way we do business*

# Park Maintenance & Improvement

## **2007 G.O. Bonds**

- **158 Projects planned**
- **91% of funds received thru 2015 have been expended or encumbered**
- **80% of funds received thru 2016 has been expended or encumbered**

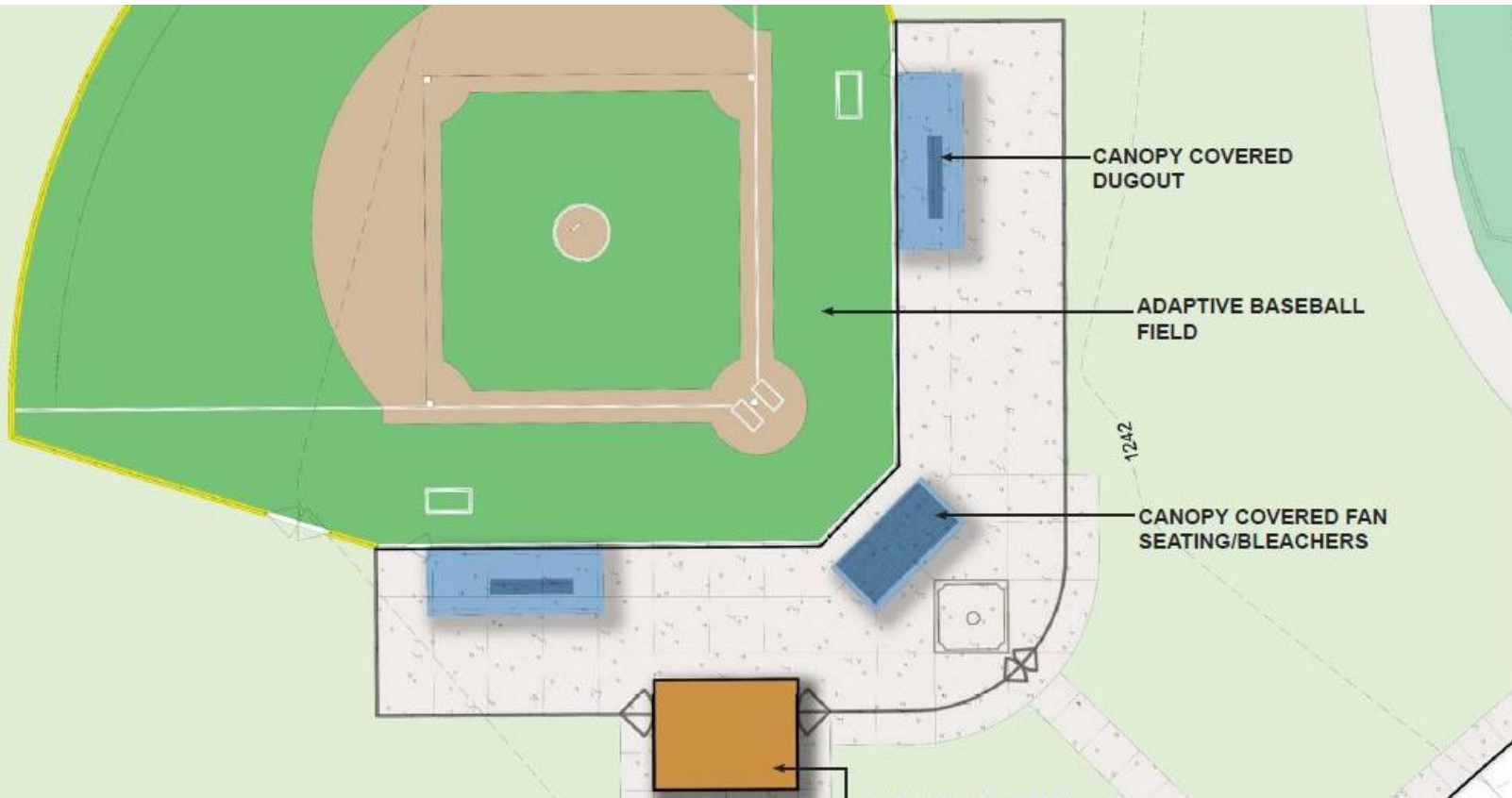
## **Mowing**

- **5,534 acres of parkland, medians, Water Trust, River Trust, rights of ways**
- **Increasing mowing frequency within existing budget**





# Route 66 Adaptive Baseball Field



# Military Park



*The way we do business*

# Health & Wellness Centers



# Will Rogers Trail



# Community Health & Wellness





# Questions?

